

910M, 914M, 918M

Wheel Loaders



	910M	914M	918M
Operating Weight	7110 kg	8050 kg	9120 kg
Bucket Capacity	1.3 m ³	1.6 m ³	2.0 m ³
Engine Rated Power (net) ISO 9249	72 kW	72 kW	84 kW



オフロード法2014年
基準適合



国土交通省指定
低騒音型建設機械

Making Your Choice Easy

Efficiently Powerful

Experience excellent fuel efficiency with an intelligent hydrostatic power train and industry leading fuel savings through a lower maximum engine speed. Power when you need it with Power-on-Demand technology that increases power when needed for improved speed up a grade.

High Productivity

Move more with Caterpillar's patented quick loading Performance Series buckets and Optimized Z-bar linkage. Multi-function work has never been so easy, with dedicated pumps for each system and a flow sharing implement valve. Simultaneously lift, steer and drive without compromise.

Excellent Operator Environment

Have a seat in the M Series Wheel Loader and enjoy excellent all around visibility, whisper quiet sound levels, and low-effort joystick controls while riding on a fully adjustable seat suspension.

Easy Operating

Meet your application requirements and individual preferences with Caterpillar's industry first adjustable power train and implement response settings. Fine tune machine performance with adjustments at your fingertips through the soft touch button keypad.

Contents

Efficiently Powerful.....	4
High Productivity.....	6
Excellent Operator Environment	8
Easy Operating	10
918M Wheel Loader.....	11
Snow Removal Specification	12
Livestock Specification.....	13
Industrial Waste Specification	14
Service and Customer Support	15
Wheel Loader Specifications	16
Standard Equipment.....	20
Optional Equipment.....	21
Machine Arrangement Specifications	22
Notes.....	23





**Published pictures and actual product models may differ.*

The Cat® 910M, 914M and 918M Wheel Loaders set the standard for productivity, fuel efficiency and operator comfort. The improved optimized Z-bar loader linkage delivers the quick loading performance of a traditional Z-bar with the parallelism and load handling capability of a toolcarrier. A high torque, lower speed Cat C4.4 ACERT™ engine works in concert with an intelligent hystat power train to deliver fuel efficiency as standard. Meets Japan 2014 (Tier 4 Final) emission standards with a diesel oxidation catalyst designed to manage itself so you can concentrate on your work.

Efficiently Powerful

More power with excellent fuel efficiency.



Intelligent Power Management

The Caterpillar exclusive Intelligent Power Management system has been further enhanced to monitor operator input and power availability to keep the machine working at peak efficiency and provide the operator with greater customization to suit their application.

Maximize Fuel Efficiency

Eco Mode allows you to choose between maximum fuel efficiency and boosted hydraulic speed.



Eco Mode

- Enabled at the push of a button (Eco).
- Saves up to 5% fuel consumption compared to Standard Mode. Biggest gains seen during load and carry, snow removal and roading applications.
- Intelligent Hystat maintains maximum travel speed capability.

Standard Mode

- Boosts engine speed by over 20%.
- Increases hydraulic cycle times and productivity.
- Recommended when working on grades or in applications requiring hydraulic work tools.

Four Cylinders of Efficient Power

The Cat C4.4 ACERT engine provides quieter operation while delivering superior performance and durability through a high torque, lower speed design. The engine meets Japan 2014 (Tier 4 Final) emission standards with a clean emissions module that is designed to manage itself so you can concentrate on your work.

- No downtime required with a self-managing aftertreatment system that keeps you on the job.
- Extended fluid fill intervals with minimal use of Diesel Exhaust Fluid (DEF) also known as Adblue with up to six fuel tank fills per DEF fill.
- Configurable auto idle shut down based on time and ambient temperature to further reduce fuel burn and keep operating costs low.



Axles

Lock up and go with fully locking front and rear differential axles that can be engaged on the move at full torque with the pull of a trigger on the multifunction joystick to keep you climbing.

Independent service brakes on front and rear axles provide robust stopping performance while a mechanical park brake allows you to safely secure the machine with ease.



High Productivity

Efficient and productive.



Optimized Z-bar Linkage

The Caterpillar patented optimized Z-bar linkage combines the digging efficiency of a traditional Z-bar with integrated toolcarrier capabilities for great performance and versatility.

- Parallelism functionality gives truly predictable performance while high tilt forces throughout the working range help you safely and confidently handle loads with precise control.
- Visibility to bucket corners and fork tips at ground level remain excellent while sight lines at full lift are maximized.
- Lift higher and reach further with optional High Lift linkage available. (910M, 914M)

Quick Loading Performance Series Buckets

Performance Series Buckets deliver up to 10% higher fill factors and better material retention for significant productivity and fuel efficiency improvements. The buckets feature a longer floor to take a bigger bite of the pile, an open throat to heap higher and curved side bars to help with material retention.



Smooth and Predictable Multi-Function Performance

M Series machines feature an electro-hydraulic control system that is governed by the Intelligent Power Management system for peak efficiency. The load-sensing, variable flow system senses work demand and adjusts flow and pressure to match the operators request.

- Multi-Function through dedicated hydraulic systems featuring one pump for the Intelligent Hydrostatic drive, a second pump for the implements, and a third pump for the steering system. Drive, Lift and Steer simultaneously with smooth predictable control. The M Series simply does what you ask it to.
- Effortless hydraulic work tool operation with creep control, throttle lock, and continuous flow. This allows the operator to lock in travel speed, engine speed, and auxiliary flow and focus only on steering the machine.



Excellent Operator Environment

Comfortable cab and seating.



Have a Seat and Experience:

- Electro-hydraulic controls featuring a low effort joystick for lift and tilt functions along with integrated Forward/Neutral/Reverse switch and differential lock trigger.
- Superior all around visibility with a pillarless front windshield, internal and external mirrors, clean hydraulic lines routing, as well as in-line engine mounting for exceptional rear visibility.
- Climate controlled cab with heated rear glass and multiple air vents for a quick defrost.
- Fully adjustable controls including steering column, arm rest and seat suspension.
- Information at a glance with large LCD display on front console.
- An extra eye on the job site with optional rearview camera capability.



Enjoy Coming to Work with:

- A spacious, safe, quiet operator environment featuring ergonomic controls.
- Quickly customizable machine operation with the eight button keypad to allow real time adjustments to machine features.
- Comfortable soft stops at cylinder end stroke conditions and programmed kickout points. (918M)
- An even smoother ride with optional Ride Control when working unloaded and loaded with excellent material retention.





Customizable Hydraulic Response

Easily customize the hydraulic performance through the keypad to optimize your efficiency.

- Operator can tune the machine for slower operation to do fine grading or faster operation such as high productivity agricultural applications.
- Fully adjustable Ride Control activation speed (through Electronic Technician – ET).
- Control auxiliary work tool operation with proportional 3rd and 4th function auxiliary flows via second lever.

Easy Operating

Safe. Comfortable. Efficient.

Work as one with your machine by easily adjusting the power train and hydraulics to meet your personal preferences or application requirements.

Flexible Power Train

A smooth, step-less electronically controlled hydrostatic transmission provides adjustable power to the ground with excellent travel speed control and customizable feel.

- Select your directional shift response based on application and operator preference. This setting adjusts the rollout characteristics when shifting from Forward, Neutral, and Reverse.
- Reduce tire wear using rimpull control which enables you to match available tractive power to underfoot conditions.
- Fine tune travel speed when using work tools such as sweeper, etc. with Creeper Control.

Machine Coded Start

- The M Series Wheel Loaders offer an additional level of security with coded start option. This allows the owner to set up multiple four or six digit security codes that enable the machine to start.



918M Wheel Loader

High performance model added.



The 918M Wheel Loader has been added to the Cat Compact Wheel Loaders. The 918M has outstanding performance in snow removal, livestock and waste applications.



Unique features of the 918M:

- **Set kick out position in cab**

Lift kick out position, bucket kick out position can be set in the cab. Just press and hold the keypad switch to complete the setting and contribute to improvement in work efficiency.

- **Cylinder soft stop function**

It is a function to alleviate the shock when the working machine is stopped near the cylinder stroke end and kick out set position. It prevents cargo spillage and ensures comfortable ride comfort.

Snow Removal Specification

Applicable for 8 ton/11 ton snow removal dozer.



The 910M snow removal specification corresponds to the 8 ton class snow removal dozer and the 918M corresponds to the 11 ton class snow removal dozer designated by the Japan Ministry of Land, Infrastructure, Transport and Tourism.

Main Equipment for Snow Removal

- Two man cab
- Hydraulics 3V/4V
- Quick coupler
- Back-up alarm
- Wide fender (SUNOKO type)
- Mud guard
- Center counterweight
- 16.9-24 12PR (L-2) snow tire (910M)
- 17.5-25 12PR (L-2) snow tire (914M/918M)
- Beacon flash light
- Snow wiper blade
- Tachograph
- Air cleaner built-in cyclone type precleaner
- High speed • high rimpull specification*
- Angling plow
- Slide angling plow
- Multi plow

*For 8 ton class snow removal dozer (910M only)



Two man cab

Livestock Specification

910M, 914M, 918M



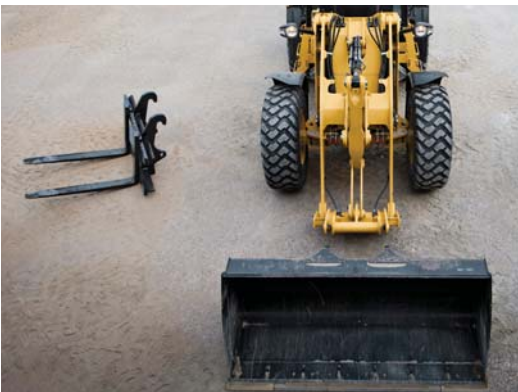
The work range is extended by high lift arm (910M/914M). Differential lock ensures the driving force is transmitted to the wheels even on bad roads and slippery road conditions. Demand fan, standard equipment, allows noise reduction.

Main Equipment for Livestock

- High Lift (910M/914M)
- Hydraulics 3V
- Quick coupler
- Back-up alarm
- Wide fender
- Mud guard
- Ride Control
- Creeper Control
- Air cleaner built-in cyclone type precleaner



High Lift (910M/914M)



With the quick coupler, you can quickly and easily switch work tools, such as from Bucket to Forks. The switch for the lock/unlock function of the quick coupler is located in the cab of the machine.



Industrial Waste Specification

910M, 914M, 918M

No puncture cushion tire allows work without worrying about puncture. Work range extended by high lift arm (910M/914M). Differential lock ensures the driving force is transmitted to the wheels even on bad roads and slippery road conditions.

Main Equipment for Industrial Waste

- High Lift (910M/914M)
- Hydraulics 3V
- 17.5x25 Flexport™ no puncture cushion tire
- Back-up alarm
- Ride Control
- Creeper Control
- Air cleaner built-in cyclone type precleaner



No puncture cushion tire



Air cleaner (intake in hood)

New cyclone type precleaner prevents dust from entering the engine filter. This innovative system enables maintenance to be easier and faster.

Service

Schedule your downtime to maximize your up time.

Get up and running quickly with ground level, daily service access. Three large service doors can be opened and closed in any order to give full access to filters and service points. Extended service intervals on hydraulic and power train filters reduce service time and maximize uptime. Additional service features include:

- Product Link™ with subscription to VisionLink® to monitor your machine remotely.
- Quick fuel filter service with Caterpillar's exclusive electric fuel priming pump.
- Extended cleanouts with single plane cooling system and wide spaced eight fins per inch coolers as standard.
- Easy battery terminal access for jump starts.
- Eco drain valve avoids fluid spills when servicing the machine.



Customer Support

Unmatched service makes the difference.



From helping you choose the right machine to knowledgeable ongoing support, Cat dealers provide the best in sales and service.

- Preventive maintenance programs and guaranteed maintenance contracts.
- Best-in-class parts availability.
- Operator training to help boost your profits.
- Genuine Cat Remanufactured parts.

910M, 914M, 918M Wheel Loaders Specifications

Engine

Cat C4.4 ACERT	910M	914M	918M
Rated Power (gross) ISO 14396	74 kW/2,200 min ⁻¹	74 kW/2,200 min ⁻¹	86 kW/2,200 min ⁻¹
Rated Power (net) ISO 9249	72 kW/2,200 min ⁻¹	72 kW/2,200 min ⁻¹	84 kW/2,200 min ⁻¹
Maximum Torque (gross) ISO 14396	450 N·m	450 N·m	500 N·m
Maximum Torque (net) ISO 9249	446 N·m	446 N·m	495 N·m
Displacement	4.4 L	4.4 L	4.4 L
Bore	105 mm	105 mm	105 mm
Stroke	127 mm	127 mm	127 mm

- Net power ratings are tested at the reference conditions for the specified standard.
- Net power advertised is the power available at the flywheel plus front drive implement pump when the engine is equipped with fan, air cleaner, muffler and alternator.
- The Cat C4.4 ACERT engine meets Japan 2014 (Tier 4 Final).

Hydraulic System

	910M	914M	918M
Pump Type	Gear Pump	Variable axial piston	Variable axial piston
Maximum Pump Flow	122 L/min	148 L/min	165 L/min
3 rd Function, Maximum Flow, Standard	90 L/min	90 L/min	95 L/min
3 rd Function, Maximum Flow, High	N/A	120 L/min	150 L/min
4 th Function, Maximum Flow	90 L/min	90 L/min	95 L/min
Maximum Working Pressure	23.5 MPa	28.0 MPa	28.0 MPa
Relief Pressure (tilt cylinder)	34.0 MPa	34.0 MPa	32.0 MPa
3 rd and 4 th Function Maximum Working Pressure	21.0 MPa	21.0 MPa	32.0 MPa
3 rd and 4 th Function Relief Pressure	25.0 MPa	25.0 MPa	32.0 MPa

Power Train

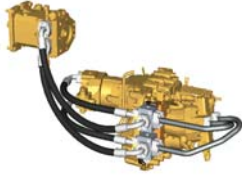


- Differential lock can be engaged on the go at full torque up to 2.5 km/h and stays active up to 10 km/h.

	910M	914M	918M
Front Axle	Fixed	Fixed	Fixed
Traction Aid	Differential lock	Differential lock	Differential lock
Rear Axle	± 11° Oscillation	± 11° Oscillation	± 11° Oscillation
Traction Aid	Differential lock	Differential lock	Differential lock
Brakes			
Service	Inboard wet disc	Inboard wet disc	Inboard wet disc
Park	Cable applied, spring released	Cable applied, spring released	Cable applied, spring released

910M, 914M, 918M Wheel Loaders Specifications

Transmission



- *Creeper Control allows for speed control from a stand still up to 10 km/h. The Creeper Control will only work in Range 1.
- **When the optional high speed, high rimpull specification is selected.

	910M		914M/918M	
	Forward	Reverse	Forward	Reverse
Low Range, Speed Range 1*	10 km/h	10 km/h	10 km/h	10 km/h
Low Range, Speed Range 2	20 km/h	20 km/h	20 km/h	20 km/h
High Range	34 (39**) km/h	30 km/h	39 km/h	30 km/h

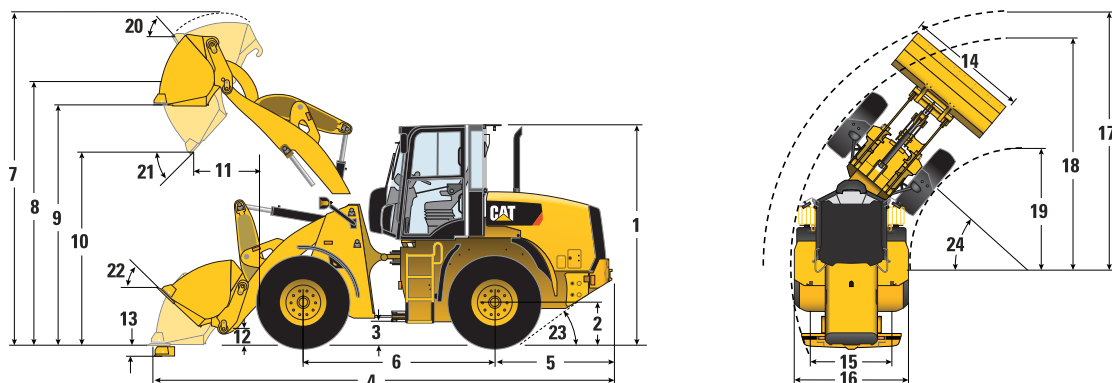
Service Refill Capacities

- DEF used in Cat Selective Catalyst Reduction (SCR) systems must meet the requirements outlined in the International Organization for Standardization (ISO) standard 22241-1.

	910M/914M/918M
Fuel Tank	154 L
Cooling System	21.5 L
Engine Crankcase	8.8 L
Front Axles	7.5 L
Rear Axles	7.5 L
Hydraulic System (including tank)	98 L
Hydraulic Tank	55 L
Transmission	3.4 L
Diesel Exhaust Fluid (DEF) Tank	18.9 L

910M, 914M, 918M Wheel Loaders Specifications

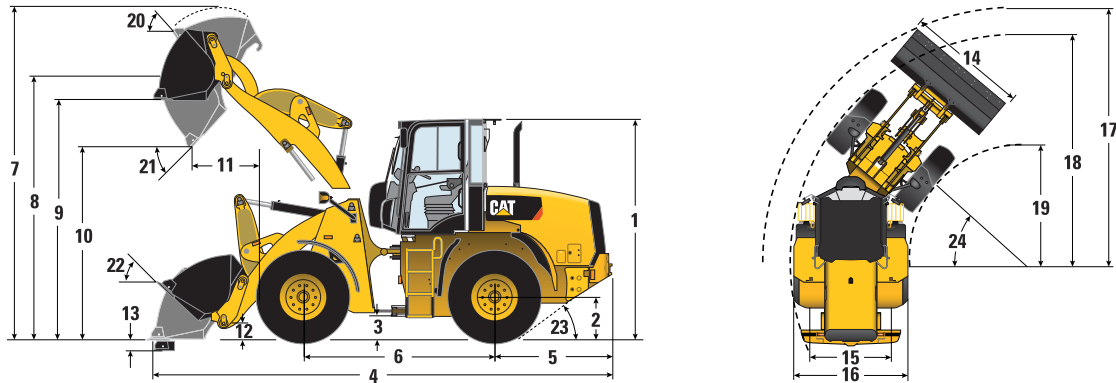
Dimensions with Bucket



		Standard Lift – Pin On			High Lift – Pin On	
		910M	914M	918M	910M	914M
1 Height: Ground to Cab	mm	3035	3095	3110	3035	3095
2 Height: Ground Axle Center	mm	605	640	640	605	640
3 Height: Ground Clearance	mm	345	405	405	345	405
4 Length: Overall	mm	6225	6270	6625	6740	6870
5 Length: Rear Axle to Bumper	mm	1590	1595	1600	1595	1650
6 Length: Wheel Base	mm	2600	2600	2700	2600	2600
7 Height: Overall	mm	4525	4620	4880	4880	4975
8 Height: Bucket Pin	mm	3675	3715	3790	4030	4070
9 Clearance: Level Bucket	mm	3420	3460	3535	3775	3815
10 Dumping Clearance: Bucket at 45°	mm	2850	2820	2805	3210	3175
11 Dumping Reach: Bucket at 45°	mm	765	790	860	985	1010
12 Carry Height: Bucket Pin	mm	320	320	355	485	485
13 Dig Depth	mm	115	90	90	295	270
14 Width: Bucket (General Purpose)	mm	2320	2400	2400	2320	2400
15 Width: Tread Center	mm	1725	1800	1800	1725	1800
16 Width: Over Tires	mm	2185	2260	2260	2185	2260
17 Turning Radius: Over Bucket	mm	5150	5205	5420	5380	5440
18 Turning Radius: Outside of Tires	mm	4665	4700	4860	4665	4700
19 Turning Radius: Inside of Tires	mm	2480	2440	2580	2480	2440
20 Rack Angle at Full Lift		57°	57°	56°	59°	59°
21 Dump Angle at Full Lift		47°	48°	45°	43°	44°
22 Rack Angle at Carry		42°	41°	49°	50°	49°
23 Departure Angle		30°	30°	30°	30°	30°
24 Articulation Angle		40°	40°	40°	40°	40°
Operating Weight	kg	7110	8050	9120	7540	8500
Bucket Capacity	m ³	1.3	1.6	2.0	1.3	1.6
Operating Load	kg	2400	2800	3140	2160	2540
Breakout Force	kN	65	78	86	65	79
Tire Size		16.9-24-10PR	17.5-25-12PR	17.5-25-12PR	16.9-24-10PR	17.5-25-12PR

910M, 914M, 918M Wheel Loaders Specifications

Dimensions with Bucket



		Standard Lift – Quick Coupler			High Lift – Quick Coupler	
		910M	914M	918M	910M	914M
1 Height: Ground to Cab	mm	3035	3095	3110	3035	3095
2 Height: Ground Axle Center	mm	605	640	640	605	640
3 Height: Ground Clearance	mm	345	405	405	345	405
4 Length: Overall	mm	6335	6375	6730	6845	6975
5 Length: Rear Axle to Bumper	mm	1590	1595	1600	1595	1650
6 Length: Wheel Base	mm	2600	2600	2700	2600	2600
7 Height: Overall	mm	4585	4680	4945	4920	5035
8 Height: Bucket Pin	mm	3675	3715	3790	4030	4070
9 Clearance: Level Bucket	mm	3420	3460	3535	3775	3815
10 Dumping Clearance: Bucket at 45°	mm	2780	2750	2730	3140	3100
11 Dumping Reach: Bucket at 45°	mm	845	870	935	1060	1085
12 Carry Height: Bucket Pin	mm	320	320	355	485	485
13 Dig Depth	mm	115	90	90	295	270
14 Width: Bucket (General Purpose)	mm	2320	2400	2400	2320	2400
15 Width: Tread Center	mm	1725	1800	1800	1725	1800
16 Width: Over Tires	mm	2185	2260	2260	2185	2260
17 Turning Radius: Over Bucket	mm	5190	5245	5450	5435	5495
18 Turning Radius: Outside of Tires	mm	4665	4700	4860	4665	4700
19 Turning Radius: Inside of Tires	mm	2480	2440	2580	2480	2440
20 Rack Angle at Full Lift		57°	57°	55°	59°	59°
21 Dump Angle at Full Lift		48°	48°	46°	44°	44°
22 Rack Angle at Carry		42°	41°	49°	50°	49°
23 Departure Angle		30°	30°	30°	30°	30°
24 Articulation Angle		40°	40°	40°	40°	40°
Operating Weight	kg	7470	8410	9500	7900	8860
Bucket Capacity	m ³	1.3	1.6	2.0	1.3	1.6
Operating Load	kg	2350	2760	3050	2110	2480
Breakout Force	kN	59	70	77	57	71
Tire Size		16.9-24-10PR	17.5-25-12PR	17.5-25-12PR	16.9-24-10PR	17.5-25-12PR

910M, 914M, 918M Standard Equipment

Standard Equipment

Standard equipment may vary. Consult your Cat dealer for details.

POWER TRAIN

- Cat C4.4 ACERT engine:
 - Common rail fuel injection
 - Meets Japan 2014 emissions standards
- Caterpillar NO_x reduction system
- S·O·SSM port, transmission oil
- Hydrostatic transmission
- Lube for life universal joints
- Forward – Neutral – Reverse switch on joystick
- Forward – Neutral – Reverse column shift
- Differentials lock
- Air cleaner built-in cyclone type precleaner (intake in hood)
- Demand fan
- Oscillation stopper
- 16.9-24 10PR (L-2) tier (910M)
- 17.5-25 12PR (L-2) tier (914M, 918M)
- Intake in hood
- Cold weather fuel

LOADER END

- Standard lift arm

BUCKET

- 1.3 m³ General Purpose Bucket (910M)
- 1.6 m³ General Purpose Bucket (914M)
- 2.0 m³ General Purpose Bucket (918M)

HYDRAULICS

- Two valve, single lever joystick
- Diagnostic pressure taps
- S·O·S port, hydraulic oil
- Variable displacement piston pump (914M, 918M)
- Gear pump (910M)

ELECTRICAL

- 150 amp alternator
- Back-up alarm
- Battery disconnect switch
- Heavy duty battery
- Head lights
- Halogen lights, front and rear

FLUIDS

- Extended life coolant antifreeze, protected to –36° C

CHASSIS

- Front fender and rear platform
- Lockable engine enclosure
- Tow hook
- Vandalism protection – locked service points

OTHER

- License plate holder
- Rearview mirror

OPERATOR ENVIRONMENT

- ROPS/FOPS cab
- Implement lockout
- Electro-hydraulic implement controls
- Gauges:
 - Engine coolant temperature
 - Hydraulic oil temperature
 - Fuel level
 - Speedometer
 - Digital hour meter
 - DEF level indicator
- Warning system indicators:
 - Emission malfunction
 - Air filter restriction
 - Brake charge pressure low
 - Engine malfunction
 - Park brake applied
 - Electrical system voltage flow
 - Hydraulic oil filter bypass
 - Action indicator
- Rimpull (traction) control
- Bucket positioner
- Lift kickout
- Implement Modulation
- Adjust vehicle acceleration/deceleration
- Throttle (engine speed) lock
- Seat:
 - Suspension seat (fabric)
 - Adjustable height, backrest, armrest
- Retractable seat belt 51 mm
- Heater and air conditioner
- Tinted front glass, laminated
- Tilt steering
- Rear window defrost
- Lockable storage box
- AM/FM radio
- 12V power socket
- Product Link PL240

Optional Equipment

Optional equipment may vary. Consult your Cat dealer for details.

POWER TRAIN

- High speed • high rimpull specification (910M)
- Supplemental steering
- Tire options:
 - 16.9-24 12PR (L-2) Tire (910M)
 - 16.9-24 12PR (L-2) Snow Tire (910M)
 - 17.5-25 12PR (L-2) Snow Tire (914M, 918M)
 - 17.5×25 Flexport no punk cushion tire

LOADER END

- High lift arm (910M, 914M)
- Quick coupler

HYDRAULICS

- Three valve auxiliary (two lever)
- Four valve auxiliary (two lever)

FOR COLD WEATHER

- Antifreeze coolant (–50° C)
- Engine coolant heater (120V)

OPERATOR ENVIRONMENT

- ROPS/FOPS canopy
- Two man cab for snow removal
- Heater
- Ride Control
- Creeper Control
- Machine Security System (MSS)
- Rearview camera and monitor
- Product Link PL641

OTHER

- Center counterweight*
- Light guard
- Wide fender
- Wide fender (SUNOKO type)
- Mud guard
- Tool box*

*Impossible to install at the same time.

BUCKET

- 910M
 - 1.3 m³ General Purpose Bucket (hook)
 - 1.6 m³ General Purpose Bucket (pin on, hook)
- 914M
 - 1.6 m³ General Purpose Bucket (hook)
- 918M
 - 2.0 m³ General Purpose Bucket (hook)

FORK

- Fork carriage (hook)
- Fork tine (length of tine: 1350 mm, 1200 mm)

FOR SNOW REMOVAL

- Angling plow (pin on)
- Angling plow (hook)
- Slide angling plow (pin on)
- Slide angling plow (hook)
- Multi plow (pin on)
- Multi plow (hook)
- Beacon flash light
- Snow wiper blade
- Tachograph (two man cab)
- Snow removal plate holder

910M, 914M, 918M Machine Arrangement Specifications

Machine Arrangement Specifications

		910M		914M		918M	
		Cab	Canopy	Cab	Canopy	Cab	Canopy
Work Device	General Purpose Bucket (1.3 m ³)	●	●	—	—	—	—
	General Purpose Bucket (1.3 m ³) Hook	○	○	—	—	—	—
	General Purpose Bucket (1.6 m ³)	○	○	●	●	—	—
	General Purpose Bucket (1.6 m ³) Hook	○	○	○	○	—	—
	General Purpose Bucket (2.0 m ³)	—	—	—	—	●	●
	General Purpose Bucket (2.0 m ³) Hook	—	—	—	—	○	○
	Standard Lift Arm	●	●	●	●	●	●
	High Lift Arm	○	○	○	○	—	—
	Quick Coupler	○	○	○	○	○	○
Hydraulic System	Hydraulic Two Valve, One Lever Control	●	●	●	●	●	●
	Hydraulic Three Valve, Two Lever Control	○	○	○	○	○	○
	Hydraulic Four Valve, Two Lever Control*	○	○	○	○	○	○
Tire	16.9-24 10PR (L-2) Tire	●	●	—	—	—	—
	16.9-24 12PR (L-2) Tire	○	○	—	—	—	—
	16.9-24 12PR (L-2) Snow Tire	○	○	—	—	—	—
	17.5-25 12PR (L-2) Tire	—	—	●	●	●	●
	17.5-25 12PR (L-2) Snow Tire	—	—	○	○	○	○
	17.5×25 Flexport No Puk Cushion Tire	○	○	○	○	○	○
Operator Station	ROPS Cab	●	—	●	—	●	—
	ROPS Canopy	—	●	—	●	—	●
	Two Man Cab for Snow Removal	○	—	○	—	○	—
	Heater and Air Conditioner	●	—	●	—	●	—
	Heater	○	—	○	—	○	—
	Suspension Seat (fabric)	●	—	●	—	●	—
	Suspension Seat (vinyl)	—	●	—	●	—	●
	AM/FM Radio	●	—	●	—	●	—
	Working Light (halogen front two, rear two)	●	●	●	●	●	●
	Snow Wiper Blade	○	—	○	—	○	—
Other	Lift Kickout	●	●	●	●	●	●
	Bucket Positioner	●	●	●	●	●	●
	Differential Lock	●	●	●	●	●	●
	Demand Fan	●	●	●	●	●	●
	Ride Control and Creeper Control	○	○	○	○	○	○
	High Speed • High Rimpull Specification	○	○	●	●	●	●
	Heavy Duty Battery	●	●	●	●	●	●
	Back-up Alarm	●	●	●	●	●	●
	Product Link PL240	●	●	●	●	●	●
	Product Link PL641	○	○	○	○	○	○
	Machine Security System (MSS)	○	○	○	○	○	○
	Standard Fender	●	●	●	●	●	●
	Wide Fender (SUNOKO type) and Mud Guard	○	○	○	○	○	○
	Wide Fender and Mud Guard	○	○	○	○	○	○
	Center Counterweight	○	○	○	○	○	○
	Oscillation Stopper	●	●	●	●	●	●
	Rearview Mirror	●	●	●	●	●	●
	Rearview Camera and Monitor	○	—	○	—	○	—
	Eco Drain	●	●	●	●	●	●
	Air Cleaner built-in Cyclone type Precleaner (Intake in Hood)	●	●	●	●	●	●
	Cold Weather Fuel	●	○	●	○	●	○

● Standard Equipment ○ Optional Equipment — Not available *Only Standard Lift Arm

For more complete information on Cat products, dealer services, and industry solutions, visit us on the web at www.cat.com

AEHQ8126 (06-2018)
(Japan)

© 2018 Caterpillar
All rights reserved

Materials and specifications are subject to change without notice. Featured machines in photos may include additional equipment. See your Cat dealer for available options.

CAT, CATERPILLAR, SAFETY.CAT.COM, their respective logos, "Caterpillar Yellow" and the "Power Edge" trade dress, as well as corporate and product identity used herein, are trademarks of Caterpillar and may not be used without permission.

VisionLink is a trademark of Trimble Navigation Limited, registered in the United States and in other countries.

Based on the Labor, Safety and Health Laws in Japan, employer of small construction equipment are required to provide specific training for all operators on machines with ship weight less than 3 metric ton. For machines greater than 3 metric ton, operator needs to obtain operator license certification from a Government approved registered training school.

