



# 320 GC

## Hydraulic Excavator

# Technical Specifications

Configurations and features may vary by region. Please consult your Cat® dealer for availability in your area.

## Table of Contents

<b>Specifications</b> .....	<b>2</b>
Engine .....	2
Swing Mechanism .....	2
Weights .....	2
Track .....	2
Drive .....	2
Hydraulic System .....	2
Service Refill Capacities .....	2
Standards .....	2
Sound Performance .....	2
Operating Weight and Ground Pressure .....	3
Major Component Weights .....	3
Dimensions .....	4
Working Ranges .....	5
Reach Boom Lift Capacities – Counterweight: 4.2 mt (9,300 lb) .....	6
Bucket Specifications and Compatibility .....	7
Attachments Offering Guide .....	9
Thumb Specifications .....	11
<b>Standard and Optional Equipment</b> .....	<b>12</b>
<b>Dealer Installed Kit and Attachments</b> .....	<b>14</b>
<b>320 GC Environmental Declaration</b> .....	<b>15</b>



# 320 GC Hydraulic Excavator Specifications

## Engine

Engine Model	Cat® C4.4	
Net Power		
ISO 9249	109 kW	146 hp
ISO 9249 (DIN)	148 hp (metric)	
Engine Power		
ISO 14396	110 kW	148 hp
ISO 14396 (DIN)	150 hp (metric)	
Bore	105 mm	4 in
Stroke	127 mm	5 in
Displacement	4.4 L	269 in <sup>3</sup>
Biodiesel capability	Up to B20 <sup>(1)</sup>	

- Meets U.S. EPA Tier 4 Final, EU Stage V, and Japan 2014 emission standards.
- Recommended for use up to 4500 m (14,764 ft) altitude with engine power derate above 3000 m (9,842.5 ft).
- Advertised power is tested per the specified standard in effect at the time of manufacture.
- Net power advertised is the power available at the flywheel when the engine is equipped with fan, air intake system, exhaust system and alternator.
- Engine speed at 2,000 rpm.

<sup>(1)</sup>Cat diesel engines are required to use ULSD (ultra-low sulfur diesel fuel with 15 ppm of sulfur or less) or ULSD blended with the following lower-carbon intensity fuels up to:

- ✓ 20% biodiesel FAME (fatty acid methyl ester)\*
- ✓ 100% renewable diesel, HVO (hydrogenated vegetable oil) and GTL (gas-to-liquid) fuels

Refer to guidelines for successful application. Please consult your Cat dealer or “Caterpillar Machine Fluids Recommendations” (SEBU6250) for details.

\*Engines with no aftertreatment devices can use higher blends, up to 100% biodiesel.

## Swing Mechanism

Swing Speed	11.6 rpm	
Maximum Swing Torque	74.4 kN·m	54,900 lb-ft

## Weights

Operating Weight	22 300 kg	49,200 lb
------------------	-----------	-----------

- Standard undercarriage, Reach boom, R2.9 (9'6") stick, HD 1.0 m<sup>3</sup> (1.31 yd<sup>3</sup>) bucket and 790 mm (31 in) triple grouser shoes and 4.2 mt (9,300 lb) counterweight.

## Track

Standard Track Shoes Width	790 mm	31 in
Number of Shoes (each side)	49	
Number of Track Rollers (each side)	8	
Number of Carrier Rollers (each side)	2	

## Drive

Gradeability	35°/70%	
Maximum Travel Speed	5.9 km/h	3.6 mph
Maximum Drawbar Pull – Standard Undercarriage	205 kN	46,131 lbf

## Hydraulic System

Main System – Maximum Flow – Implement	442 L/min (221 × 2 pumps)	116 gal/min (58 × 2 pumps)
Maximum Pressure – Equipment	35 000 kPa	5,075 psi
Maximum Pressure – Equipment – Lift Mode	38 000 kPa	5,510 psi
Maximum Pressure – Travel	34 300 kPa	4,974 psi
Maximum Pressure – Swing	25 000 kPa	3,625 psi
Boom Cylinder – Bore	120 mm	4.7 in
Boom Cylinder – Stroke	1260 mm	49.6 in
Stick Cylinder – Bore	135 mm	5.3 in
Stick Cylinder – Stroke	1504 mm	59.2 in
Bucket Cylinder – Bore	115 mm	4.5 in
Bucket Cylinder – Stroke	1104 mm	43.5 in

## Service Refill Capacities

Fuel Tank Capacity	345 L	86.6 gal
Cooling System	25 L	6.6 gal
Engine Oil	15 L	4.0 gal
Swing Drive (each)	12 L	3.2 gal
Final Drive (each)	4 L	1.1 gal
Hydraulic System (including tank)	234 L	61.8 gal
Hydraulic Tank	115 L	30.4 gal
Diesel Exhaust Fluid (DEF) Tank	39 L	10.3 gal

## Standards

Brakes	ISO 10265:2008
Cab/ROPS	ISO 12117-2:2008
Cab/FOGS (Optional)	ISO 10262:1998 Level II

## Sound Performance

ISO 6395:2008 (external)	101 dB(A)
ISO 6396:2008 (inside cab)	70 dB(A)

- When properly installed and maintained, the cab offered by Caterpillar, when tested with doors and windows closed according to ANSI/SAE J1166 OCT98, meets OSHA and MSHA requirements for operator sound exposure limits in effect at time of manufacture.
- Hearing protection may be needed when operating with an open operator station and cab (when not properly maintained or doors/windows open) for extended periods or in a noisy environment.

# 320 GC Hydraulic Excavator Specifications

## Operating Weight and Ground Pressure

Base Machine Configurations	790 mm (31 in) Triple Grouser Shoes			
	Weight		Ground Pressure	
<b>Base Frame with Track Rollers and Carrier Rollers</b>				
<b>4.2 mt (9,300 lb) Counterweight + Long Undercarriage Base Machine</b>				
Reach Boom + R2.9 (9'6") Stick + 1.0 m <sup>3</sup> (1.31 yd <sup>3</sup> ) HD Bucket	22 300 kg	49,200 lb	35.2 kPa	5.1 psi

All operating weights include a 90% fuel tank with 75 kg (165 lb) operator.

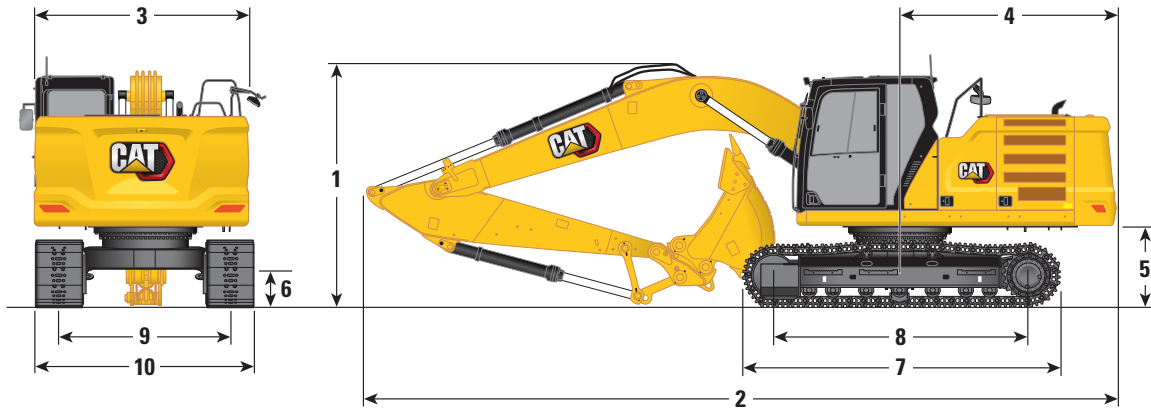
## Major Component Weights

	kg	lb
Base Machine (with 4.2 mt [9,300 lb] counterweight, semi-HD swing frame, standard base frame with HD track rollers and standard carrier rollers for long undercarriage, without boom cylinders – does not include 90% fuel and 75 kg [165 lb] operator)	14 800	32,600
Track Shoes:		
790 mm (31 in) Width, 10 mm (0.39 in) Thick Triple Grouser Track Shoes with Step Extension	3290	7,300
Two Boom Cylinders	340	750
Weight of 90% Fuel Tank and 75 kg (165 lb) Operator	310	680
Counterweight:		
4.2 mt (9,300 lb) Counterweight	4200	9,300
Swing Frame:		
Semi-HD Swing Frame	1910	4,210
Undercarriage:		
Standard Base Frame with HD Track Rollers and Standard Carrier Rollers	4390	9,700
Boom (including lines, pins, stick cylinder):		
Reach Boom 5.7 m (18'8")	1690	3,700
Stick (including lines, pins, bucket cylinder, bucket linkage):		
Reach Stick R2.9B1 (9'6")	980	2,200
Bucket (without linkage):		
1.0 m <sup>3</sup> (1.31 yd <sup>3</sup> ) HD	880	1,900
Quick Coupler:		
Pin Grabber QC	390	850

# 320 GC Hydraulic Excavator Specifications

## Dimensions

All dimensions are approximate and may vary depending on bucket selection.



### Boom Option

Reach Boom  
5.7 m (18'8")

### Stick Option

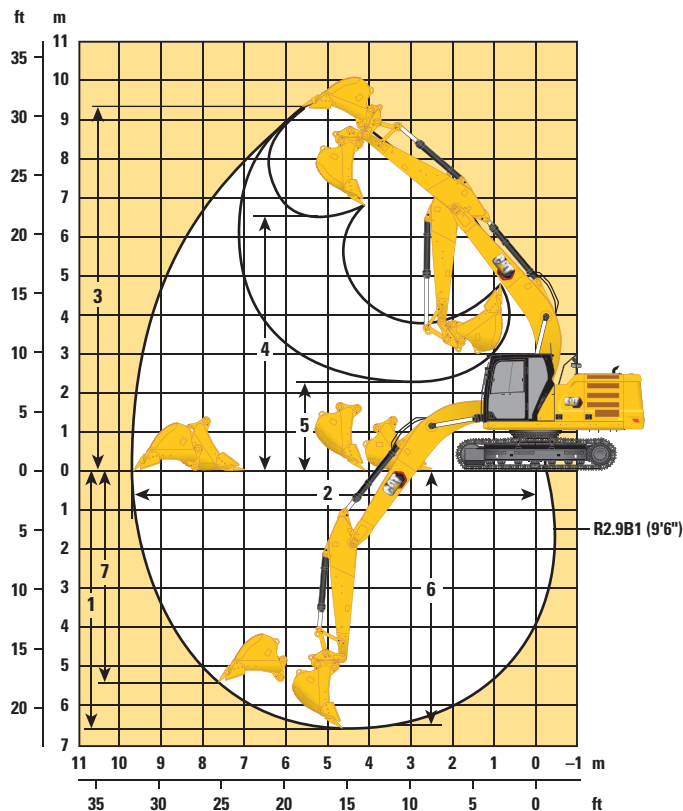
Reach Stick  
R2.9B1 (9'6")

<b>1 Machine Height:</b>		
Top of Cab Height	2960 mm	9'9"
Top of FOGS Height	3100 mm	10'2"
Handrail Height	2950 mm	9'8"
With Boom/Stick/Bucket Installed	3160 mm	10'5"
With Boom/Stick Installed	2910 mm	9'7"
With Boom Installed	2480 mm	8'2"
<b>2 Machine Length:</b>		
With Boom/Stick/Bucket Installed	9530 mm	31'3"
With Boom/Stick Installed	9500 mm	31'2"
With Boom Installed	8450 mm	27'9"
<b>3 Upperframe Width</b>	2780 mm	9'1"
<b>4 Tail Swing Radius</b>	2830 mm	9'3"
<b>5 Counterweight Clearance</b>	1050 mm	3'5"
<b>6 Ground Clearance</b>	470 mm	1'7"
<b>7 Track Length</b>	4450 mm	14'7"
<b>8 Length to Center of Rollers</b>	3650 mm	12'0"
<b>9 Track Gauge</b>	2380 mm	7'9"
<b>10 Undercarriage Width:</b>		
790 mm (31 in) Shoes	3170 mm	10'5"
Bucket Type	HD	
Bucket Capacity	1.14 m <sup>3</sup>	1.50 yd <sup>3</sup>
Bucket Tip Radius	1467 mm	4'10"

# 320 GC Hydraulic Excavator Specifications

## Working Ranges

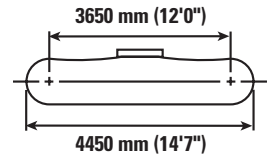
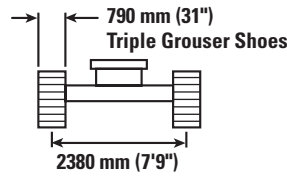
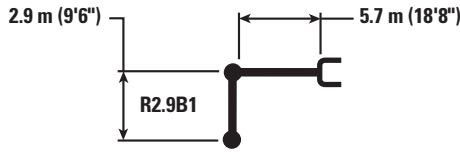
All dimensions are approximate and may vary depending on bucket selection.



Boom Option	Reach Boom 5.7 m (18'8")	
Stick Option	Reach Stick R2.9B1 (9'6")	
1 Maximum Digging Depth	6620 mm	21'9"
2 Maximum Reach at Ground Line	9760 mm	33'2"
3 Maximum Cutting Height	9330 mm	30'7"
4 Maximum Loading Height	6590 mm	21'7"
5 Minimum Loading Height	2270 mm	7'5"
6 Maximum Depth Cut for 2440 mm (8'0") Level Bottom	6440 mm	21'2"
7 Maximum Vertical Wall Digging Depth	5360 mm	17'7"
Bucket Digging Force (ISO)	150 kN	33,720 lbf
Stick Digging Force (ISO)	101 kN	22,710 lbf
Bucket Type	HD	
Bucket Capacity	1.14 m <sup>3</sup>	1.50 yd <sup>3</sup>
Bucket Tip Radius	1466 mm	4'10"

# 320 GC Hydraulic Excavator Specifications

## Reach Boom Lift Capacities – Counterweight: 4.2 mt (9,300 lb) – without Bucket



		1.5 m/5.0 ft		3.0 m/10.0 ft		4.5 m/15.0 ft		6.0 m/20.0 ft		7.5 m/25.0 ft		m ft		
7.5 m 25.0 ft	kg lb							*4350 *4350				*3750 *8,350	*3750 *8,350	6.15 20.00
6.0 m 20.0 ft	kg lb							*4950 *10,900	*4950 *10,900			*3500 *7,650	*3500 *7,650	7.29 24.17
4.5 m 15.0 ft	kg lb							*5450 *11,850	5450 11,700	*5150 *10,950	3850 8,250	*3400 *7,500	*3400 *7,500	7.99 26.67
3.0 m 10.0 ft	kg lb					*7950 *17,150	7900 17,000	*6250 *13,600	5200 11,200	*5450 *11,900	3750 8,100	*3500 *7,650	3200 7,050	8.36 27.50
1.5 m 5.0 ft	kg lb					*9650 *20,800	7400 16,000	*7100 *15,400	5000 10,700	5650 12,150	3650 7,850	*3700 *8,100	3100 6,800	8.45 28.33
0 m 0 ft	kg lb			*5800 *13,250	*5800 *13,250	*10 600 *22,900	7150 15,400	7700 16,550	4800 10,350	5550 11,950	3550 7,650	*4100 *9,000	3150 6,900	8.26 27.50
-1.5 m -5.0 ft	kg lb	*6150 *13,800	*6150 *13,800	*10 000 *22,700	*10 000 *22,700	*10 700 *23,150	7050 15,200	7600 16,350	4750 10,200	5550 11,900	3550 7,650	*4800 *10,600	3400 7,450	7.78 25.83
-3.0 m -10.0 ft	kg lb	*10 600 *23,800	*10 600 *23,800	*14 150 *30,650	13 700 29,400	*10 000 *21,600	7150 15,350	*7450 *15,950	4750 10,300			*6100 *13,400	3950 8,750	6.95 23.33
-4.5 m -15.0 ft	kg lb			*11 300 *24,200	*11 300 *24,200	*8150 *17,300	7300 15,800					*6150 *13,500	5450 12,200	5.60 18.33



ISO 10567:2007



\*Indicates that the load is limited by hydraulic lifting capacity rather than tipping load. The above loads are in compliance with hydraulic excavator lift capacity standard ISO 10567:2007. They do not exceed 87% of hydraulic lifting capacity or 75% of tipping load. Weight of all lifting accessories must be deducted from the above lifting capacities. Lifting capacities are based on the machine standing on a firm, uniform supporting surface. The use of a work tool attachment point to handle/lift objects, could affect the machine lift performance.

Lift capacity stays with ±5% for all available track shoes.

Always refer to the appropriate Operation and Maintenance Manual for specific product information.

# 320 GC Hydraulic Excavator Specifications

## Bucket Specifications and Compatibility

	Linkage	Width		Capacity		Weight		Fill	Reach Boom
		mm	in	m <sup>3</sup>	yd <sup>3</sup>	kg	lb	%	R2.9 (9'6")
<b>Pin-On (No Quick Coupler)</b>									
General Duty Capacity	B	600	24	0.55	0.72	620	1,366	100	●
	B	750	30	0.75	0.98	717	1,580	100	●
	B	900	36	0.95	1.24	793	1,747	100	●
	B	1050	42	1.16	1.52	848	1,869	100	●
	B	1200	48	1.38	1.80	924	2,038	100	⊖
General Duty Capacity – Wide Tip	B	1350	54	1.59	2.08	1002	2,210	100	○
	B	600	24	0.55	0.72	617	1,360	100	●
	B	750	30	0.75	0.98	715	1,576	100	●
	B	900	36	0.95	1.24	791	1,743	100	●
	B	1050	42	1.16	1.52	861	1,899	100	●
Heavy Duty	B	1200	48	1.38	1.80	938	2,069	100	⊖
	B	1350	54	1.59	2.08	1016	2,241	100	○
	B	600	24	0.46	0.60	647	1,426	100	●
	B	750	30	0.64	0.84	752	1,658	100	●
	B	900	36	0.81	1.06	835	1,841	100	●
Heavy Duty Power	B	1050	42	1.00	1.31	892	1,967	100	●
	B	1200	48	1.19	1.56	975	2,150	100	⊙
	B	1350	54	1.38	1.81	1060	2,336	100	X
Severe Duty	B	1050	42	0.96	1.26	898	1,980	100	●
	B	1200	48	1.14	1.49	983	2,167	100	X
Severe Duty Power	B	600	24	0.46	0.61	683	1,506	90	●
	B	750	30	0.64	0.84	795	1,753	90	●
	B	900	36	0.81	1.06	885	1,950	90	●
	B	1050	42	1.00	1.31	948	2,091	90	●
	B	1200	48	1.19	1.56	1038	2,289	90	●
Clean Up	B	900	36	0.79	1.03	853	1,881	90	●
	B	1800	72	1.60	2.09	979	2,157	100	○
Ditch Cleaning	B	2000	78	1.76	2.31	1045	2,303	100	○
	B	1500	60	1.01	1.32	651	1,436	100	●
Ditch Cleaning Tilt	B	1800	72	1.24	1.62	739	1,630	100	⊙
	B	1500	60	0.90	1.18	948	2,090	100	●
	B	1800	72	1.11	1.45	1063	2,344	100	⊙
Tamping	B	1800	72	1.40	1.83	1105	2,437	100	⊖
	B	2000	79	1.23	1.61	1132	2,496	100	⊖
	B	2200	86	0.72	0.94	868	1,913	100	●
Maximum load with pin-on (payload + bucket)								kg	3180
								lb	7,011

The above loads are in compliance with hydraulic excavator standard EN474 5:2006 + A3:2013, they do not exceed 87% of hydraulic lifting capacity or 75% of tipping capacity with front linkage fully extended at ground line with bucket curled.

Capacity based on ISO 7451:2007.

Bucket weight with General Duty tips.

### Maximum Material Density:

- 2100 kg/m<sup>3</sup> (3,500 lb/yd<sup>3</sup>)
- ⊙ 1800 kg/m<sup>3</sup> (3,000 lb/yd<sup>3</sup>)
- ⊖ 1500 kg/m<sup>3</sup> (2,500 lb/yd<sup>3</sup>)
- 1200 kg/m<sup>3</sup> (2,000 lb/yd<sup>3</sup>)
- X Not Recommended

Caterpillar recommends using appropriate work tools to maximize the value customers receive from our products. Use of work tools, including buckets, which are outside of Caterpillar's recommendations or specifications for weight, dimensions, flows, pressures, etc. may result in less-than-optimal performance, including but not limited to reductions in production, stability, reliability, and component durability. Improper use of a work tool resulting in sweeping, prying, twisting and/or catching of heavy loads will reduce the life of the boom and stick.

(continued on next page)

# 320 GC Hydraulic Excavator Specifications

## Bucket Specifications and Compatibility (continued)

	Linkage	Width		Capacity		Weight		Fill	Reach Boom
		mm	in	m <sup>3</sup>	yd <sup>3</sup>	kg	lb	%	R2.9 (9'6")
<b>With Cat Pin Grabber Coupler</b>									
General Duty Capacity	B	600	24	0.55	0.72	620	1,366	100	●
	B	750	30	0.75	0.98	717	1,580	100	●
	B	900	36	0.95	1.24	793	1,747	100	●
	B	1050	42	1.16	1.52	848	1,869	100	⊖
	B	1200	48	1.38	1.80	924	2,038	100	○
General Duty Capacity – Wide Tip	B	1350	54	1.59	2.08	1002	2,210	100	◇
	B	600	24	0.55	0.72	617	1,360	100	●
	B	750	30	0.75	0.98	715	1,576	100	●
	B	900	36	0.95	1.24	791	1,743	100	●
	B	1050	42	1.16	1.52	861	1,899	100	⊖
Heavy Duty	B	1200	48	1.38	1.80	938	2,069	100	○
	B	1350	54	1.59	2.08	1016	2,241	100	◇
	B	600	24	0.46	0.60	647	1,426	100	●
	B	750	30	0.64	0.84	752	1,658	100	●
	B	900	36	0.81	1.06	835	1,841	100	●
Heavy Duty Power	B	1050	42	1.00	1.31	892	1,967	100	⊙
	B	1200	48	1.19	1.56	975	2,150	100	⊖
	B	1350	54	1.38	1.81	1060	2,336	100	○
Heavy Duty Pin Grabber Performance	B	1050	42	0.96	1.26	898	1,980	100	⊙
	B	1200	48	1.14	1.49	983	2,167	100	⊖
	B	600	24	0.44	0.57	682	1,503	100	●
	B	750	30	0.60	0.79	787	1,735	100	●
	B	900	36	0.76	1.00	876	1,931	100	●
Severe Duty	B	1050	42	0.93	1.22	940	2,072	100	⊙
	B	1200	48	1.11	1.45	1031	2,272	100	⊖
	B	1350	54	1.28	1.67	1122	2,474	100	○
	B	600	24	0.46	0.61	683	1,506	90	●
	B	750	30	0.64	0.84	795	1,753	90	●
Clean Up	B	900	36	0.81	1.06	885	1,950	90	●
	B	1050	42	1.00	1.31	948	2,091	90	●
	B	1200	48	1.19	1.56	1038	2,289	90	⊖
	B	900	36	0.79	1.03	853	1,881	90	●
	B	1800	72	1.60	2.09	979	2,157	100	◇
Ditch Cleaning	B	2000	78	1.76	2.31	1045	2,303	100	◇
	B	1500	60	1.01	1.32	651	1,436	100	●
Ditch Cleaning Tilt	B	1800	72	1.24	1.62	739	1,630	100	⊖
	B	1500	60	0.90	1.18	948	2,090	100	●
	B	1800	72	1.11	1.45	1063	2,344	100	⊙
	B	1800	72	1.40	1.83	1105	2,437	100	⊖
									○
Maximum load with coupler (payload + bucket)								kg	2760
								lb	6,086

The above loads are in compliance with hydraulic excavator standard EN474 5:2006 + A3:2013, they do not exceed 87% of hydraulic lifting capacity or 75% of tipping capacity with front linkage fully extended at ground line with bucket curled.

Capacity based on ISO 7451:2007.

Bucket weight with General Duty tips.

### Maximum Material Density:

- 2100 kg/m<sup>3</sup> (3,500 lb/yd<sup>3</sup>)
- ⊙ 1800 kg/m<sup>3</sup> (3,000 lb/yd<sup>3</sup>)
- ⊖ 1500 kg/m<sup>3</sup> (2,500 lb/yd<sup>3</sup>)
- 1200 kg/m<sup>3</sup> (2,000 lb/yd<sup>3</sup>)
- ◇ 900 kg/m<sup>3</sup> (1,500 lb/yd<sup>3</sup>)

Caterpillar recommends using appropriate work tools to maximize the value customers receive from our products. Use of work tools, including buckets, which are outside of Caterpillar's recommendations or specifications for weight, dimensions, flows, pressures, etc. may result in less-than-optimal performance, including but not limited to reductions in production, stability, reliability, and component durability. Improper use of a work tool resulting in sweeping, prying, twisting and/or catching of heavy loads will reduce the life of the boom and stick.



# 320 GC Hydraulic Excavator Specifications

## Attachments Offering Guide

Not all Attachments are available in all regions. Consult your Cat dealer for configurations available in your region.

<input checked="" type="checkbox"/> Match	<input type="checkbox"/> * Working range front only	<input type="checkbox"/> † Allowed usage on machine less than 50%	<input checked="" type="checkbox"/> 1800 kg/m <sup>3</sup> (3,000 lb/yd <sup>3</sup> )	<input type="checkbox"/> 1200 kg/m <sup>3</sup> (2,000 lb/yd <sup>3</sup> )
-------------------------------------------	-----------------------------------------------------	-------------------------------------------------------------------	-------------------------------------------------------------------------------------------	--------------------------------------------------------------------------------

### PIN-ON ATTACHMENTS

Boom Type		Reach
Stick Length		R2.9 (9'6")
Hydraulic Hammers	H115 S	✓
	H120 GC	✓
	H120 GC S	✓
	H120 S	✓
	H130 S	✓†
Multi-Processors	MP318 Concrete Cutter Jaw	✓
	MP318 Demolition Jaw	✓
	MP318 Pulverizer Jaw	✓
	MP318 Shear Jaw	✓
	MP318 Universal Jaw	✓
Demolition and Sorting Grapples	G318	✓
	G318 WH 800	✓
	G318 WH 1100	✓
Mobile Scrap and Demolition Shears	S3025 Flat Top	✓
Compactors (Vibratory Plate)	CVP110	✓
Pulverizers	P218 Secondary Pulverizer	✓
	P318 Primary Pulverizer	✓
Orange Peel Grapples	GSH420-500	●
	GSH420-600	●
	GSH420-750	●
	GSH425-750	○
	GSH425-950	○
	GSH520-500	●
	GSH520-600	●
	GSH520-750	●
	GSH525-750	○

(continued on next page)

# 320 GC Hydraulic Excavator Specifications

## Attachments Offering Guide *(continued)*

Not all Attachments are available in all regions. Consult your Cat dealer for configurations available in your region.

Match
  \* Working range front only
  † Allowed usage on machine less than 50%

### CAT PIN GRABBER COUPLER ATTACHMENTS

Boom Type		Reach
Stick Length		R2.9 (9'6")
Hydraulic Hammers	H115 S	✓
	H120 GC	✓†
	H120 GC S	✓†
	H120 S	✓†
	H130 GC	✓*†
	H130 GC S	✓†
	H130 S	✓†
Multi-Processors	MP318 Concrete Cutter Jaw	✓
	MP318 Demolition Jaw	✓
	MP318 Pulverizer Jaw	✓
	MP318 Shear Jaw	✓
	MP318 Universal Jaw	✓
Demolition and Sorting Grapples	G318	✓
	G318 WH 800	✓
	G318 WH 1100	✓*
Compactors (Vibratory Plate)	CVP110	✓
Pulverizers	P218 Secondary Pulverizer	✓
	P318 Primary Pulverizer	✓

### BOOM-MOUNT ATTACHMENTS

Boom Type		Reach
Mobile Scrap and Demolition Shears	S2050	✓
	S3035 Flat Top	✓

# 320 GC Hydraulic Excavator Specifications

## Thumb Specifications

Match

No Match

Bucket Type	Tooth Quantity	Width		Pro Plus	Pro	Stiff Link	Utility			
		mm	in	Pin-on	Cat Pin Grabber	Pin-on	Cat Pin Grabber	Pin-on	Cat Pin Grabber	
General Duty	5	902	36	✓	✓	✓	✓	✓	✓	✓
	5	1056	42	✓	✓	✓	✓	✓	✓	✓
	6	1208	48	✓	✓	✓	✓	✓	✓	✓
	7	1350	54	✓	✓	✓	✓	✓	✓	✓
Heavy Duty	5	902	36	✓	✓	✓	✓	✓	✓	✓
	5	1056	42	✓	✓	✓	✓	✓	✓	✓
	6	1208	48	✓	✓	✓	✓	✓	✓	✓
	7	1350	54	✓	✓	✓	✓	✓	✓	✓
Heavy Duty Power	5	1056	42	✓	✓	✓	✓	✓	✓	✓
	6	1208	48			✓	✓	✓	✓	✓
Severe Duty	5	902	36	✓	✓	✓	✓	✓	✓	✓
	5	1056	42	✓	✓	✓	✓	✓	✓	✓
	6	1208	48	✓	✓	✓	✓	✓	✓	✓
Pin Grabber Performance Buckets	5	902	36		✓				✓	✓
	5	1056	42		✓	✓			✓	✓
	6	1208	48		✓				✓	✓
	7	1350	54						✓	✓

# 320 GC Standard and Optional Equipment

## Standard and Optional Equipment

Standard and optional equipment may vary. Consult your Cat dealer for details.

	Standard	Optional		Standard	Optional
<b>CAB</b>			<b>ENGINE</b>		
ROPS	✓		Cat® C4.4 single turbo engine	✓	
High-resolution 203 mm (8 in) LCD touch screen monitor	✓		Two selectable power modes	✓	
Auto bi-level air conditioner	✓		Automatic engine speed control	✓	
Jog dial and shortcut keys for monitor control	✓		Auto engine idle shutdown	✓	
Keyless push-to-start engine control	✓		Work up to 3000 m (9,842.5 ft) above sea level without engine power de-rating	✓	
Height-adjustable console, three steps with tool	✓		52° C (125° F) high-ambient cooling capacity	✓	
Fixed left-side console	✓		Cold starting capability for -32° C (-25° F)	✓	
Mechanical-suspension seat	✓		Double element air filter with integrated precleaner	✓	
51 mm (2") orange seat belt	✓		Electric fuel priming pump	✓	
Console mounted Bluetooth® radio with Aux/USB ports	✓		Electric cooling fans with auto-reverse function	✓	
12V DC outlets	✓		<b>HYDRAULIC SYSTEM</b>		
Document storage	✓		Boom and stick regeneration circuits	✓	
Cup and bottle holders	✓		Boom and stick lowering check valves		✓
Openable two-piece front window	✓		Electronic main control valve	✓	
Rear window emergency exit	✓		Auto hydraulic oil warm up	✓	
Upper radial wiper with washer	✓		Auto two-speed travel	✓	
Openable steel hatch	✓		Boom and stick drift reduction valve	✓	
LED dome light	✓		Element type main hydraulic filter	✓	
Roller front sunscreen	✓		Three button joysticks	✓	
Roller rear sunscreen		✓	Slider joysticks		✓
Washable floor mat	✓		Tandem type electronic main pump	✓	
Beacon ready	✓		Fine swing control	✓	
			Tool Control (two pumps, one/two way high-pressure flow)		✓
			Quick coupler circuit for Cat Pin Grabber	✓	

(continued on next page)

# 320 GC Standard and Optional Equipment

## Standard and Optional Equipment *(continued)*

Standard and optional equipment may vary. Consult your Cat dealer for details.

	Standard	Optional		Standard	Optional
<b>UNDERCARRIAGE AND STRUCTURES</b>			<b>CAT TECHNOLOGY</b>		
790 mm (31 in) triple grouser track shoes	✓		Cat Product Link™	✓	
Bottom guards	✓		Remote Flash	✓	
Swivel guard		✓	Remote Troubleshoot	✓	
Travel motor guards	✓		Auto hammer stop	✓	
Grease lubricated track links	✓		<b>SERVICE AND MAINTENANCE</b>		
Segmented track guiding guards	✓		Scheduled Oil Sampling (S·O·S <sup>SM</sup> ) ports	✓	
4.2 mt (9,300 lb) counterweight	✓		Grouped location for engine oil and fuel filters	✓	
Semi-HD swing frame	✓		Ground-level second dipstick for engine oil	✓	
Base frame with HD track rollers and standard carrier rollers	✓		Side entry to service platform	✓	
<b>BOOM, STICKS AND LINKAGES</b>			Integrated Vehicle Health Management system		✓
5.7 m (18'8") Reach boom	✓		<b>SAFETY AND SECURITY</b>		
2.9 m (9'6") Reach stick	✓		Rearview camera	✓	
Bucket linkage, B1-family with lifting eye	✓		Right-hand-sideview camera	✓	
<b>ELECTRICAL SYSTEM</b>			Cat PL161 Attachment Locator		✓
1,000 CCA maintenance-free batteries (×2)	✓		Neutral lever (lock out) for all controls	✓	
Centralized electrical disconnect switch	✓		Anti-skid plate and countersunk bolts on service platform	✓	
Programmable time-delay LED working lights	✓		Ground-level accessible secondary engine shutoff switch in cab	✓	
LED chassis light, LH boom light, cab lights – 850 lumens	✓		Swing alarm		✓
RH boom light		✓	RH handrail and handhold (ISO 2867:2011 compliant)	✓	
			Travel alarm	✓	
			FOGS guards		✓
			Inspection lighting		✓

# 320 GC Attachments

## Dealer Installed Kit and Attachments

Attachments may vary. Consult your Cat dealer for details.

### CAB

- Radial lower wiper for 70/30 with washer
- LH/RH electrical pedal for tool control
- Dual exit rear window kit
- Rain protector plus cab light cover
- Polycarbonate roof hatch

### SAFETY AND SECURITY

- Bluetooth receiver kit
- 75 mm (3") retractable seat belt

### ELECTRICAL

- Jump start wiring

### SERVICE AND MAINTENANCE

- Grease gun holder

### GUARDS

- Side rubber bumper
- FOGS (not compatible with cab light cover, rain protector)
- Mesh guard full front (not compatible with cab light cover, rain protector)
- Mesh guard lower half front
- Full protecting vandalism guard

The following information applies to the machine at the time of final manufacture as configured for sale in the regions covered in this document. The content of this declaration is valid as of the date issued; however, content related to machine features and specifications are subject to change without notice. For additional information, please see the machine's Operation and Maintenance Manual.

For more information on sustainability in action and our progress, please visit <https://www.caterpillar.com/en/company/sustainability>.

## Engine

- The Cat® C4.4 engine meets U.S. EPA Tier 4 Final, EU Stage V, and Japan 2014 emission standards.
- Cat diesel engines are required to use ULSD (ultra-low sulfur diesel fuel with 15 ppm of sulfur or less) or ULSD blended with the following lower-carbon intensity fuels up to:
  - ✓ 20% biodiesel FAME (fatty acid methyl ester)\*
  - ✓ 100% renewable diesel, HVO (hydrogenated vegetable oil) and GTL (gas-to-liquid) fuels

Refer to guidelines for successful application. Please consult your Cat dealer or “Caterpillar Machine Fluids Recommendations” (SEBU6250) for details.

*\*Engines with no aftertreatment devices can use higher blends, up to 100% biodiesel.*

## Air Conditioning System

- The air conditioning system on this machine contains the fluorinated greenhouse gas refrigerant R134a (Global Warming Potential = 1430). The system contains 0.85 kg (1.9 lb) of refrigerant which has a CO<sub>2</sub> equivalent of 1.216 metric tonnes (1.340 tons).

## Paint

- Based on best available knowledge, the maximum allowable concentration, measured in parts per million (PPM), of the following heavy metals in paint are:
  - Barium < 0.01%
  - Cadmium < 0.01%
  - Chromium < 0.01%
  - Lead < 0.01%

## Sound Performance

ISO 6395 (external) – 101 dB(A)

ISO 6396 (inside cab) – 70 dB(A)

- When properly installed and maintained, the cab offered by Caterpillar, when tested with doors and windows closed according to ANSI/SAE J1166 OCT98, meets OSHA and MSHA requirements for operator sound exposure limits in effect at time of manufacture.
- Hearing protection may be needed when operating with an open operator station and cab (when not properly maintained or doors/windows open) for extended periods or in a noisy environment.

## Oils and Fluids

- Caterpillar factory fills with ethylene glycol coolants. Cat Diesel Engine Antifreeze/Coolant (DEAC) and Cat Extended Life Coolant (ELC) can be recycled. Consult your Cat dealer for more information.
- Cat Bio HYDO™ Advanced is an EU Ecolabel approved biodegradable hydraulic oil.
- Additional fluids are likely to be present, please consult the Operations and Maintenance Manual or the Application and Installation guide for complete fluid recommendations and maintenance intervals.

## Features and Technology

- The following features and technology may contribute to fuel savings and/or carbon reduction. Features may vary. Consult your Cat dealer for details.
  - Advanced hydraulic systems balance power and efficiency
  - Smart mode matches machine power to digging requirements automatically
  - Eco mode minimizes fuel consumption for light applications
  - Cut maintenance costs up to 25% with extended service intervals
  - Programmable high-efficiency cooling fans run only when needed
  - New hydraulic oil filter provides longer life with a 3,000-hour replacement interval

## Recycling

- The materials included in machines are categorized as below with approximate weight percentage. Because of variations of product configurations, the following values in the table may vary.

Material Type	Weight Percentage
Steel	82.67%
Iron	5.61%
Nonferrous Metal	2.68%
Mixed Metal	1.28%
Mixed-Metal and Nonmetal	1.07%
Plastic	1.35%
Rubber	0.08%
Mixed Nonmetallic	0.23%
Fluid	3.33%
Other	1.70%
Uncategorized	0.00%
Total	100%

- A machine with higher recyclability rate will ensure more efficient usage of valuable natural resources and enhance End-of-Life value of the product. According to ISO 16714 (Earthmoving machinery – Recyclability and recoverability – Terminology and calculation method), recyclability rate is defined as percentage by mass (mass fraction in percent) of the new machine potentially able to be recycled, reused or both.

All parts in the bill of material are first evaluated by component type based on a list of components defined by the ISO 16714 and Japan CEMA (Construction Equipment Manufacturers Association) standards. Remaining parts are further evaluated for recyclability based on material type.

Because of variations of product configurations, the following value in the table may vary.

Recyclability – 97%

