

# 340F UHD

## Ultra High Demolition

Hydraulic Excavator



### Engine

Engine Model	Cat® C9.3 ACERT™	
Power – ISO 14396	234 kW	318 PS
Power – ISO 9249	228 kW	310 PS

### Working Range

Maximum Pin Height	21 700 mm
Maximum Weight at Stick Nose	3600 kg

### Operating Weights

Minimum Weight	43 800 kg
Maximum Weight	50 900 kg



オフロード法2014年  
基準適合



国土交通省指定  
低騒音型建設機械

***The 340F Ultra High Demolition reaches where other machines cannot, with its unique boom coupling system, you can easily and quickly install or remove high-reach and short front parts, making your demo jobs safer and faster. Where the real power comes in is through the hydraulic system. You can literally rip up and tear down structures all day long with a great deal of speed, precision, and control. Caterpillar offers the best-in-class work tool capability – bigger and more versatile work tools for bigger and more versatile demolition applications. When you add in a quiet and comfortable tilting cab, easy-to-reach maintenance points, and legendary product support, you simply won't find a better 40-ton choice for demolition.***

***Following are the built-in benefits that make the 340F Ultra High Demolition an outstanding performer and an excellent choice for your line of work:***



### **Efficient Performance**

- The Ultra High Demolition front can reach up to 22 m and is capable of carrying up to 3.6 tons at 15 m horizontal reach (Long Hydraulic Variable Gauge).
- You can count on the economical and reliable C9.3 ACERT™ engine that meets Japan 2014 (Tier 4 Final) emission standards.
- Save fuel, resulting in reduced emissions, and extend your service intervals with built-in auto engine shutdown. Simply plug in the interval you want right in the monitor and let the machine do the rest.

### **Contents**

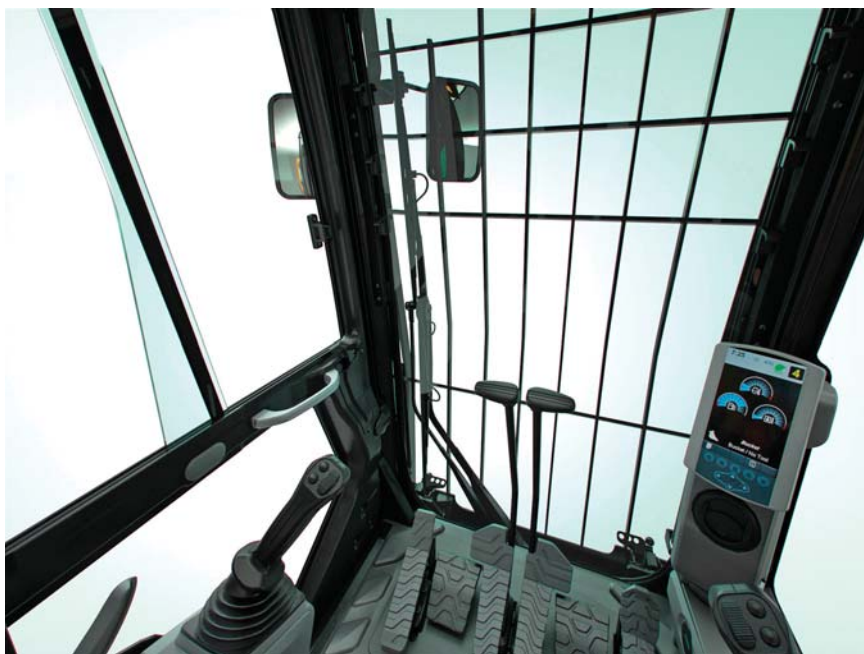
Key Features .....	2
Specifications .....	4
Standard Equipment .....	18
Optional Equipment .....	19

# Key Features

## Built-in benefits and available options

### Cat Technology and Safety

- Keep your tool in the right position at a safe working range with the exclusive Cat Active Stability Monitoring System™.
- Improve your safety with the new hydraulic pin system that locks front parts together.
- Maintain a clear field of view around the machine with the rearview and side-view cameras.
- Enhance your safety and visibility with reinforced glass with wipers and washers on the front and top windows. Both windows are protected with a falling object guard system.
- Make timely, fact-based decisions to maximize your efficiency and minimize your operating costs. Cat Product Link™ and VisionLink® provide remote access to your machine's location, hours, fuel consumption, idle time, events, and diagnostic codes.



### Comfort

- Enjoy quietness and comfort with the dedicated demolition cab.
- Position yourself for maximum comfort with fully adjustable seats and adjustable armrests and joysticks.
- Increase your upward visibility with the tiltable cab during high-reach demolition.

### Maintenance

- Reach routine service points like grease banks and fluid taps at ground level.
- Keep your machine productive with periodic S-O-S<sup>SM</sup> oil and cooling sampling.
- Protect your cooling cores and extend their cleaning intervals thanks to the dedicated screen fitted on the outside of the door to prevent small debris from entering inside the compartment.

### Versatility

- Easily and quickly install or remove high reach and short front parts with the new hydraulically-driven boom coupling system. Quickly release and re-connect all your hydraulic lines thanks to connectors that can be handled without any tooling.
- Maximize your machine's performance with a Cat quick coupler.
- Switch from one tool to another in minutes with the Caterpillar exclusive tool control – a system that remembers pressures and flows for up to 20 attachments.

### Durability

- Depend on your Cat machine giving you long service life in the most demanding applications – all backed by unmatched product support from your local Cat dealer.

# 340F UHD Ultra High Demolition Hydraulic Excavator Specifications

## Engine

Engine Model	Cat C9.3 ACERT
Gross Power – ISO 14396	234 kW
Net Power – ISO 9249	228 kW
Bore	115 mm
Stroke	149 mm
Displacement	9.3 L

## Hydraulic System

Front Parts Option	UHD (CB)	UHD (B1)	2PB	Retrofit Fronts
Main System – Maximum Flow (total)	570 L/min	570 L/min	570 L/min	570 L/min
Swing System – Maximum Flow	139 L/min	139 L/min	279 L/min	279 L/min
Maximum Pressure – Equipment	35 000 kPa	35 000 kPa	35 000 kPa	35 000 kPa
Maximum Pressure – Travel	35 000 kPa	35 000 kPa	35 000 kPa	35 000 kPa
Maximum Pressure – Swing	28 000 kPa	28 000 kPa	28 000 kPa	28 000 kPa
Pilot System – Maximum Flow	29 L/min	29 L/min	29 L/min	29 L/min
Pilot System – Maximum Pressure	4100 kPa	4100 kPa	4100 kPa	4100 kPa
Base Boom Cylinder – Bore	160 mm	160 mm	150 mm	160 mm
Base Boom Cylinder – Stroke	1357 mm	1357 mm	1440 mm	1357 mm
Fore Boom Cylinder – Bore	170 mm	170 mm	190 mm	—
Fore Boom Cylinder – Stroke	1738 mm	1738 mm	865 mm	—
Stick Cylinder – Bore	170 mm	170 mm	170 mm	170 mm
Stick Cylinder – Stroke	1039 mm	1039 mm	1738 mm	1738 mm
CB Bucket Cylinder – Bore for UHD	140 mm	—	—	—
CB Bucket Cylinder – Stroke for UHD	1100 mm	—	—	—
DB Bucket Cylinder – Bore for Retrofit	—	—	150 mm	150 mm
DB Bucket Cylinder – Stroke for Retrofit	—	—	1151 mm	1151 mm
B1 Bucket Cylinder – Bore for UHD	—	130 mm	—	—
B1 Bucket Cylinder – Stroke for UHD	—	1115 mm	—	—

## Drive

	UHD Fronts	2PB Fronts	Retrofit Fronts
Maximum Travel Speed	4.8 km/h	4.8 km/h	4.8 km/h
Maximum Drawbar Pull	285 kN	290 kN	289 kN

## Swing Mechanism

	UHD Fronts	2PB and Retrofit Fronts
Swing Speed	4.4 rpm	8.9 rpm
Swing Torque	109 kN·m	109 kN·m

## Service Refill Capacities

	UHD/2PB Fronts	Retrofit Fronts
Fuel Tank Capacity	620 L	620 L
Cooling System	43 L	43 L
Engine Oil (with filter)	32 L	32 L
Swing Drive (each)	19 L	19 L
Final Drive (each)	8 L	8 L
Hydraulic System Oil Capacity (including tank)	420 L	380 L
Hydraulic Tank Oil	175 L	175 L
DEF Tank	41 L	41 L

## Track

Number of Shoes (each side)	49 pieces
Number of Track Rollers (each side)	9 pieces
Number of Carrier Rollers (each side)	2 pieces

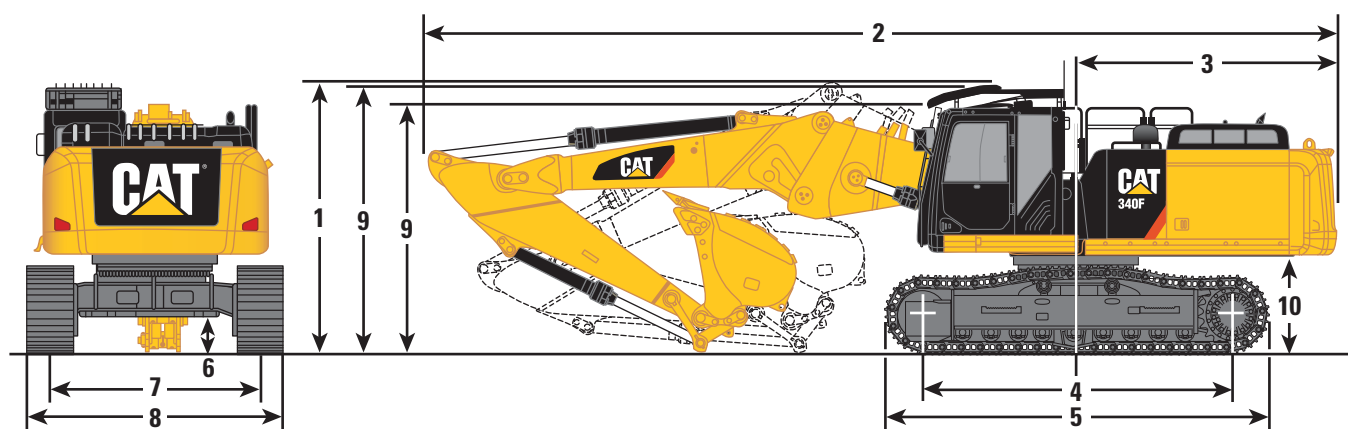
## Standards

Brakes	ISO 10265:2008
Cab/FOGS	SAE J1356:MAR2013 ISO 10262:1998
Cab/ROPS	ISO 12117-2:2008

# 340F UHD Ultra High Demolition Hydraulic Excavator Specifications

## Dimensions

All dimensions are approximate.



Undercarriage Option	Long Hydraulic Variable Gauge					
Boom Options	Retrofit Boom (Straight)			Retrofit Boom (Bent)		
Stick Options	R3.9DB	R3.2DB	R2.8DB	R3.9DB	R3.2DB	R2.8DB
1 Shipping Height*	4130 mm	3840 mm	3880 mm	4020 mm	3910 mm	4130 mm
2 Shipping Length	12 060 mm	12 120 mm	12 100 mm	11 400 mm	11 380 mm	11 450 mm
3 Tail Swing Radius	3500 mm	3500 mm	3500 mm	3500 mm	3500 mm	3500 mm
4 Length to Center of Rollers	4040 mm	4040 mm	4040 mm	4040 mm	4040 mm	4040 mm
5 Track Length	5040 mm	5040 mm	5040 mm	5040 mm	5040 mm	5040 mm
6 Ground Clearance*	485 mm	485 mm	485 mm	485 mm	485 mm	485 mm
Ground Clearance**	450 mm	450 mm	450 mm	450 mm	450 mm	450 mm
7 Track Gauge	2390 mm	2390 mm	2390 mm	2390 mm	2390 mm	2390 mm
8 Transport						
600 mm Triple Grouser HD Shoes	2990 mm	2990 mm	2990 mm	2990 mm	2990 mm	2990 mm
600 mm Double Grouser Shoes	2990 mm	2990 mm	2990 mm	2990 mm	2990 mm	2990 mm
700 mm Triple Grouser Shoes	3090 mm	3090 mm	3090 mm	3090 mm	3090 mm	3090 mm
9 Cab Height	3440 mm	3440 mm	3440 mm	3440 mm	3440 mm	3440 mm
Cab Height with Top Guard	3570 mm	3570 mm	3570 mm	3570 mm	3570 mm	3570 mm
10 Counterweight Clearance**	1270 mm	1270 mm	1270 mm	1270 mm	1270 mm	1270 mm

\*Including shoe lug height.

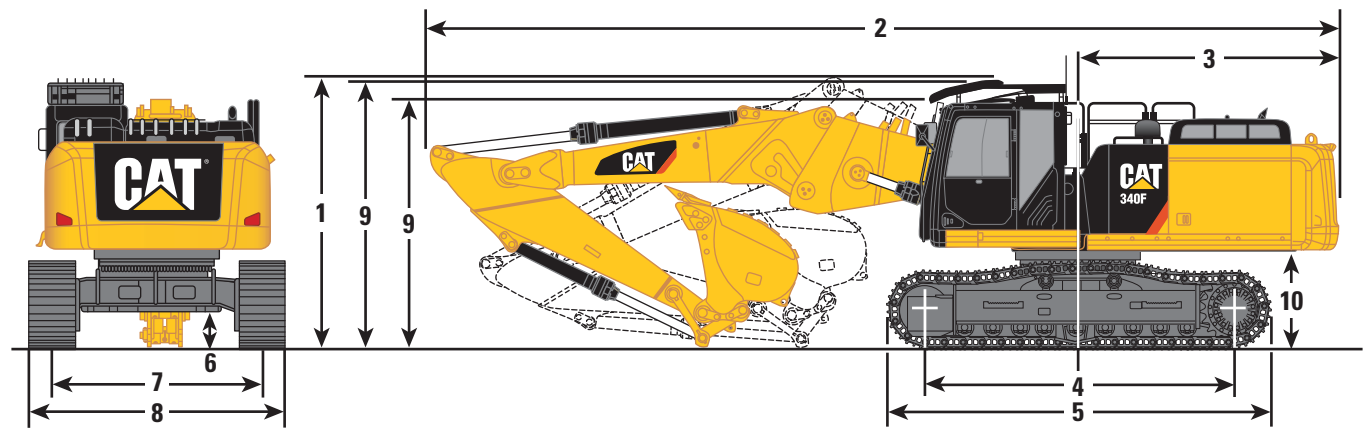
\*\*Without shoe lug height.

Dimensions may vary depending on bucket selection.

# 340F UHD Ultra High Demolition Hydraulic Excavator Specifications

## Dimensions

All dimensions are approximate.



Undercarriage Option	Long Undercarriage	
Boom Options	Retrofit Boom (Straight)	Retrofit Boom (Bent)
Stick Options	R3.2DB	R3.2DB
1 Shipping Height*	3830 mm	3900 mm
2 Shipping Length	12 110 mm	11 390 mm
3 Tail Swing Radius	3500 mm	3500 mm
4 Length to Center of Rollers	4040 mm	4040 mm
5 Track Length	5040 mm	5040 mm
6 Ground Clearance*	515 mm	515 mm
Ground Clearance**	480 mm	480 mm
7 Track Gauge	2590 mm	2590 mm
8 Transport		
600 mm Triple Grouser HD Shoes	3190 mm	3190 mm
600 mm Double Grouser Shoes	3190 mm	3190 mm
700 mm Triple Grouser Shoes	3290 mm	3290 mm
9 Cab Height	3390 mm	3390 mm
Cab Height with Top Guard	3520 mm	3520 mm
10 Counterweight Clearance**	1230 mm	1230 mm

\*Including shoe lug height.

\*\*Without shoe lug height.

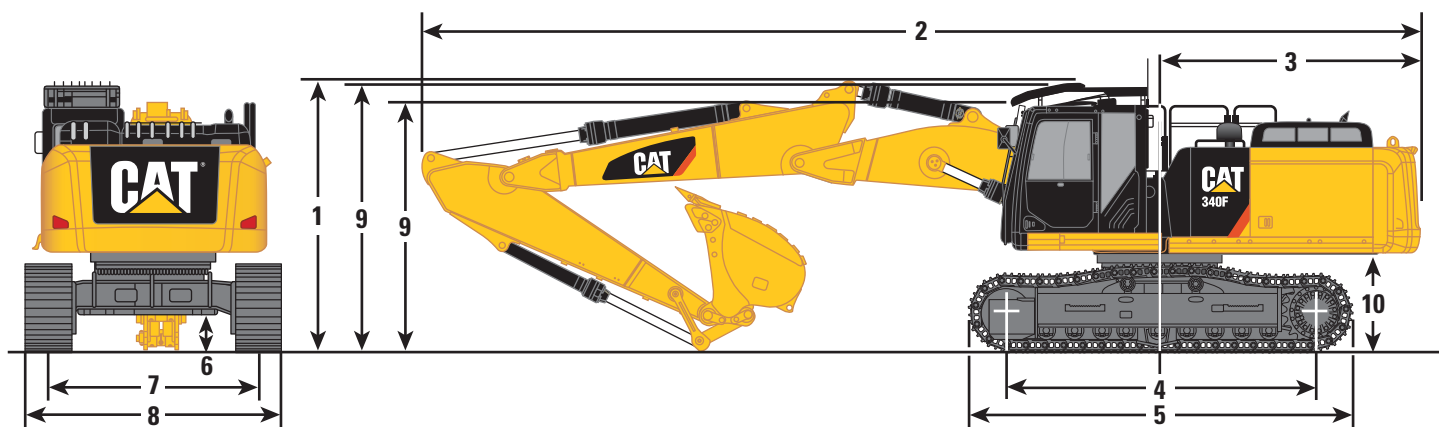
Dimensions may vary depending on bucket selection.



# 340F UHD Ultra High Demolition Hydraulic Excavator Specifications

## Dimensions

All dimensions are approximate.



Undercarriage Option	2PB Long Undercarriage
Boom Option	2PB Front Boom
Stick Option	R3.2DB
1 Shipping Height*	3520 mm
2 Shipping Length	13 050 mm
3 Tail Swing Radius	3500 mm
4 Length to Center of Rollers	4040 mm
5 Track Length	5040 mm
6 Ground Clearance*	520 mm
Ground Clearance**	485 mm
7 Track Gauge	2590 mm
8 Transport	
700 mm Triple Grouser Shoes	3290 mm
9 Cab Height	3390 mm
Cab Height with Top Guard	3520 mm
10 Counterweight Clearance**	1230 mm

\*Including shoe lug height.

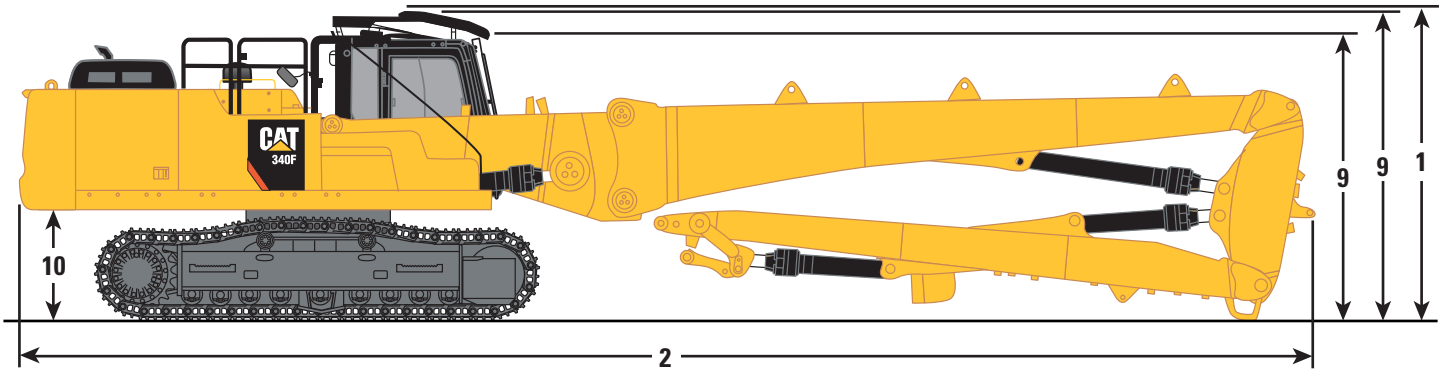
\*\*Without shoe lug height.

Dimensions may vary depending on bucket selection.

# 340F UHD Ultra High Demolition Hydraulic Excavator Specifications

## Dimensions

All dimensions are approximate.



Undercarriage Options	Long Hydraulic Variable Gauge	Long Undercarriage
Boom Option	UHD Boom	
Stick Option	UHD Stick	
1 Shipping Height*	3570 mm	3520 mm
2 Shipping Length	15 180 mm	15 180 mm
3 Tail Swing Radius	3500 mm	3500 mm
4 Length to Center of Rollers	4040 mm	4040 mm
5 Track Length	5040 mm	5040 mm
6 Ground Clearance*	485 mm	515 mm
6 Ground Clearance**	450 mm	480 mm
7 Track Gauge	2390 mm	2590 mm
8 Transport		
600 mm Triple Grouser HD Shoes	2990 mm	3190 mm
600 mm Double Grouser Shoes	2990 mm	3190 mm
700 mm Triple Grouser Shoes	3090 mm	3290 mm
9 Cab Height	3440 mm	3390 mm
Cab Height with Top Guard	3570 mm	3520 mm
10 Counterweight Clearance**	1270 mm	1230 mm

\*Including shoe lug height.

\*\*Without shoe lug height.

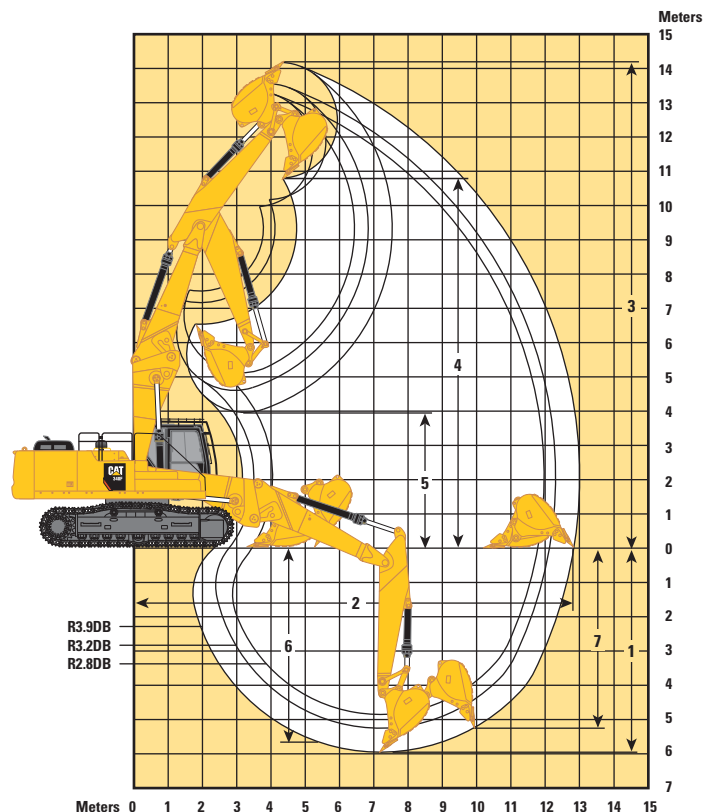
Dimensions may vary depending on bucket selection.



# 340F UHD Ultra High Demolition Hydraulic Excavator Specifications

## Working Ranges

All dimensions are approximate.



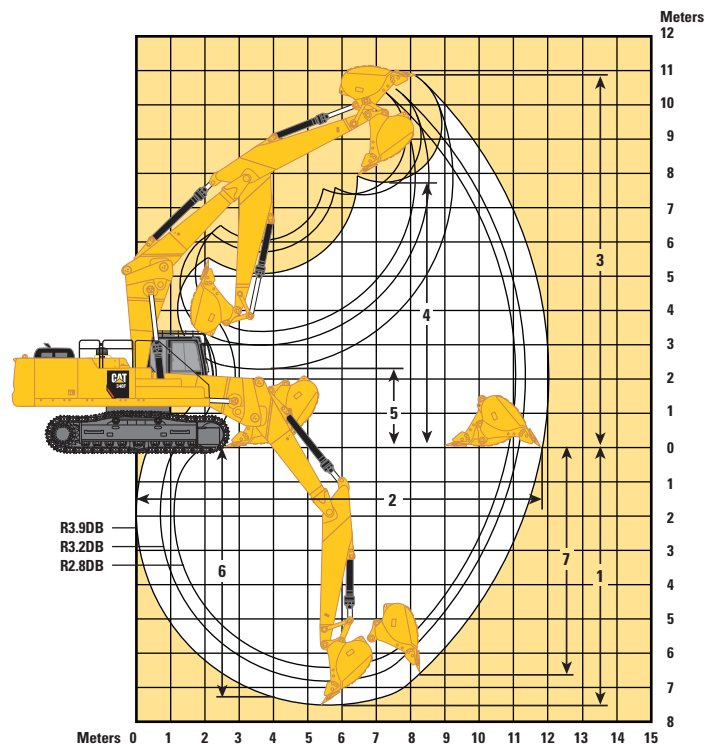
Boom Option	Retrofit Boom (Straight)			
Stick Options	R3.9DB	R3.2DB	R2.8DB	R3.2DB
Undercarriage Options	Long Hydraulic Variable Gauge			Long
1 Maximum Digging Depth	5950 mm	5250 mm	4850 mm	5300 mm
2 Maximum Reach at Ground Level	12 840 mm	12 120 mm	11 790 mm	12 130 mm
Maximum Radius of Working Equipment	13 010 mm	12 300 mm	11 970 mm	12 300 mm
3 Maximum Cutting Height	14 180 mm	13 550 mm	13 340 mm	13 500 mm
4 Maximum Loading Height	10 800 mm	10 170 mm	9970 mm	10 120 mm
5 Minimum Loading Height	3960 mm	4600 mm	5120 mm	4550 mm
6 Maximum Depth Cut for 2440 mm Level Bottom	5820 mm	5100 mm	4680 mm	5150 mm
7 Maximum Vertical Wall Digging Depth	5170 mm	4500 mm	4110 mm	4550 mm
Bucket Type	DB1460HD	DB1460HD	DB1460HD	DB1460HD
Bucket Capacity	1.4 m <sup>3</sup>	1.4 m <sup>3</sup>	1.4 m <sup>3</sup>	1.4 m <sup>3</sup>
Bucket Tip Radius	1692 mm	1692 mm	1692 mm	1692 mm

Dimensions may vary depending on bucket selection.

# 340F UHD Ultra High Demolition Hydraulic Excavator Specifications

## Working Ranges

All dimensions are approximate.



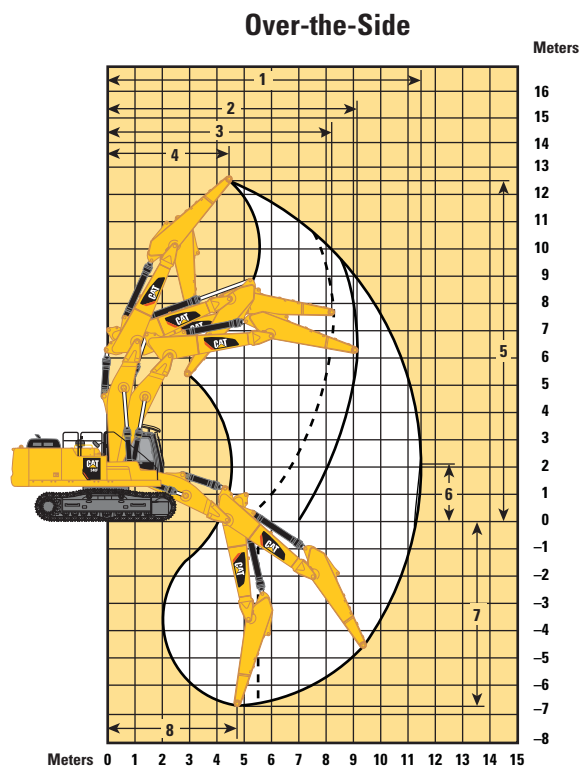
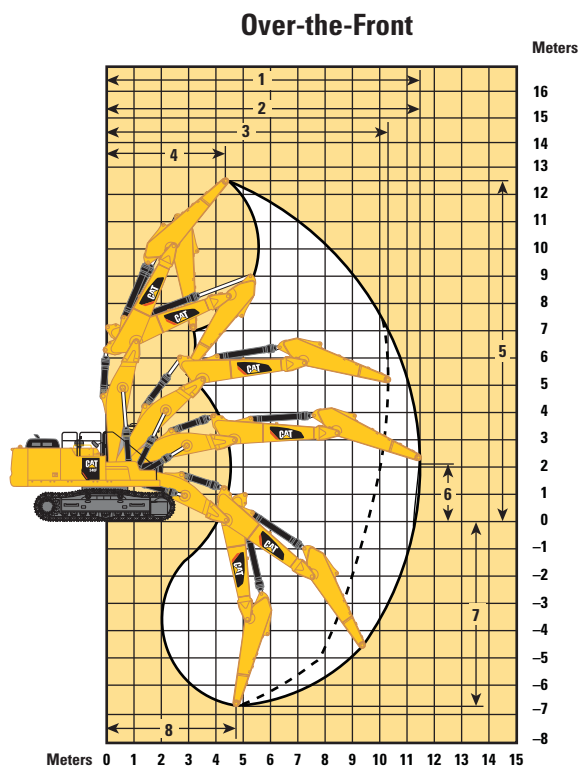
Boom Option	Retrofit Boom (Bent)			
Stick Options	R3.9DB	R3.2DB	R2.8DB	R3.2DB
Undercarriage Options	Long Hydraulic Variable Gauge			Long
1 Maximum Digging Depth	7510 mm	6810 mm	6410 mm	6870 mm
2 Maximum Reach at Ground Level	11 850 mm	11 150 mm	10 860 mm	11 160 mm
Maximum Radius of Working Equipment	12 030 mm	11 350 mm	11 060 mm	11 350 mm
3 Maximum Cutting Height	10 860 mm	10 470 mm	10 540 mm	10 420 mm
4 Maximum Loading Height	7740 mm	7380 mm	7390 mm	7320 mm
5 Minimum Loading Height	2290 mm	2990 mm	3390 mm	2940 mm
6 Maximum Depth Cut for 2440 mm Level Bottom	7380 mm	6660 mm	6250 mm	6710 mm
7 Maximum Vertical Wall Digging Depth	6730 mm	6060 mm	5680 mm	6110 mm
Bucket Type	DB1460HD	DB1460HD	DB1460HD	DB1460HD
Bucket Capacity	1.4 m³	1.4 m³	1.4 m³	1.4 m³
Bucket Tip Radius	1692 mm	1692 mm	1692 mm	1692 mm

Dimensions may vary depending on bucket selection.

# 340F UHD Ultra High Demolition Hydraulic Excavator Specifications

## Working Ranges

All dimensions are approximate.

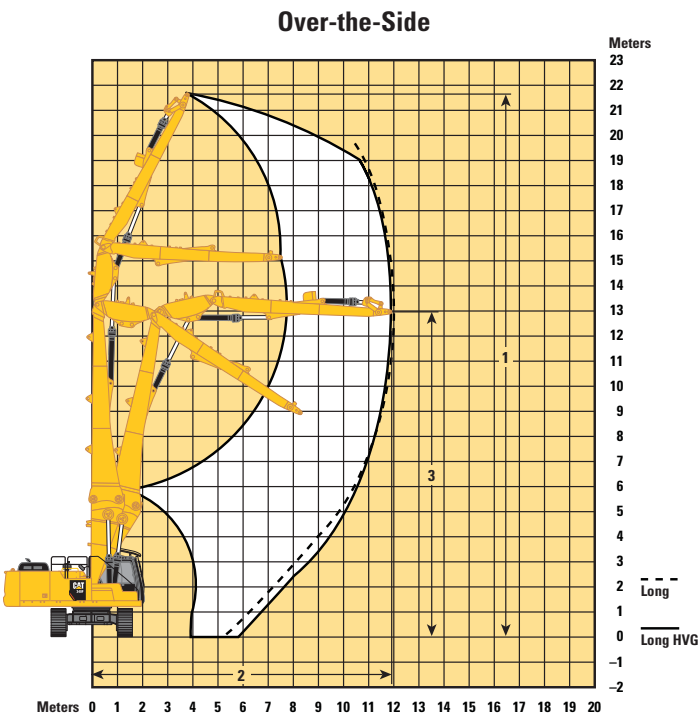
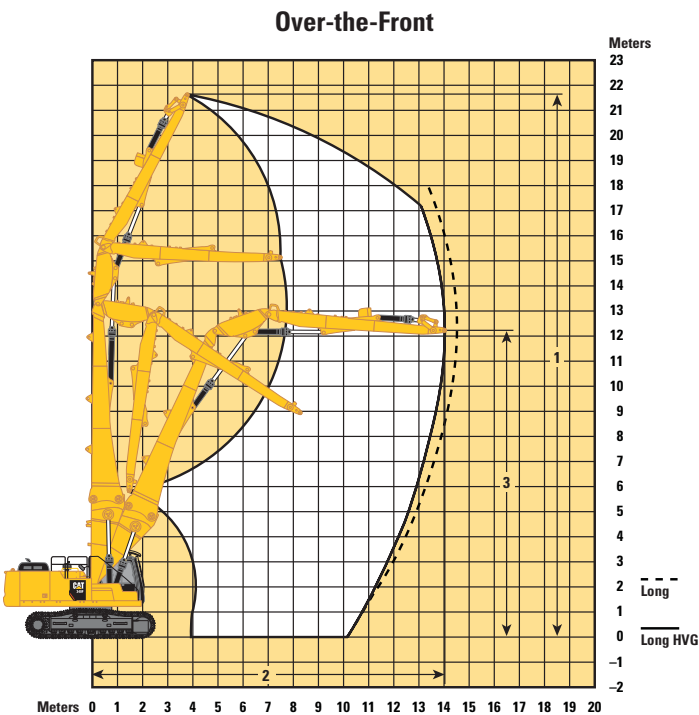


Boom Option	2PB Front Boom
Stick Option	R3.2DB
Undercarriage Option	2PB Long Undercarriage
Over-the-Front	
1 Maximum Reach at Stick Nose	11 481 mm
2 Maximum Reach at Stick Nose with 3.5 ton Work Tool	11 475 mm
3 Maximum Reach at Stick Nose with 4.5 ton Work Tool	10 317 mm
4 Radius of Maximum Pin Height at Stick Nose	4452 mm
5 Maximum Pin Height at Stick Nose	12 529 mm
6 Height of Maximum Reach at Stick Nose	2036 mm
7 Maximum Vertical Depth at Stick Nose	6748 mm
8 Radius of Maximum Vertical Depth at Stick Nose	4758 mm
Over-the-Side	
1 Maximum Reach at Stick Nose	11 481 mm
2 Maximum Reach at Stick Nose with 3.5 ton Work Tool	9150 mm
3 Maximum Reach at Stick Nose with 4.5 ton Work Tool	8280 mm
4 Radius of Maximum Pin Height at Stick Nose	4452 mm
5 Maximum Pin Height at Stick Nose	12 529 mm
6 Height of Maximum Reach at Stick Nose	2036 mm
7 Maximum Vertical Depth at Stick Nose	6748 mm
8 Radius of Maximum Vertical Depth at Stick Nose	4758 mm

# 340F UHD Ultra High Demolition Hydraulic Excavator Specifications

## Working Ranges

All dimensions are approximate.



Boom Option	UHD Boom Nose and UHD Fore Boom	
Stick Option	UHD Stick	
Undercarriage Options	Long Hydraulic Variable Gauge	Long
<b>Over-the-Front</b>		
1 Maximum Pin Height at Stick Nose	21 700 mm	21 650 mm
2 Maximum Reach at Stick Nose	14 040 mm	14 450 mm
3 Maximum Height at Stick Nose in Maximum Reach Position	12 160 mm	11 940 mm
Maximum Weight at Stick Nose	3100 kg	2900 kg
<b>Over-the-Side</b>		
1 Maximum Pin Height at Stick Nose	21 700 mm	21 650 mm
2 Maximum Reach at Stick Nose	11 960 mm	11 970 mm
3 Maximum Height at Stick Nose in Maximum Reach Position	12 910 mm	12 890 mm
Maximum Working Pin Height at Stick Nose	18 850 mm	18 860 mm
Maximum Weight at Stick Nose	3100 kg	2900 kg

# 340F UHD Ultra High Demolition Hydraulic Excavator Specifications

## Operating Weights and Ground Pressures

Boom	Stick	Bucket	700 mm		600 mm HD		600 mm	
			Triple Grouser Shoes		Triple Grouser Shoes		Double Grouser Shoes	
			kg	kPa	kg	kPa	kg	kPa
Long Undercarriage								
UHD****	UHD	—	44 300	70.8	44 600	83.0	44 700	83.0
Retrofit**	HD R3.2DB	1.4 m³	43 700	70.0	44 000	81.9	44 100	81.9
Long Hydraulic Variable Gauge								
UHD*	UHD	—	50 100	80.0	50 400	93.8	50 500	93.7
Retrofit	HD R3.9DB	—	48 900	78.1	49 200	91.6	49 300	91.5
	HD R3.2DB***	—	48 900	78.1	49 300	91.7	49 400	91.7
	HD 2.8DB	—	48 700	77.8	49 100	91.4	49 200	91.3
2PB Front								
	ES R3.2DB	—	40 500	64.7	—	—	—	—

\*With 0.5 mt Quick Coupler, without work tool.

\*\*Bucket for all retrofit front is 1438 kg (HD 1.4 m<sup>3</sup> DB).

\*\*\*Including the mass of bucket (1438 kg).

\*\*\*\*Without work tool.

## Bucket and Stick Forces

Boom Options	2PB Front Boom	Retrofit Boom (Straight)	Retrofit Boom (Bent)
Stick Options	HD R3.2DB	R3.2DB	R3.2DB
General Duty			
Bucket Digging Force (ISO)	222 kN	222 kN	222 kN
Stick Digging Force (ISO)	169 kN	169 kN	169 kN

# 340F UHD Ultra High Demolition Hydraulic Excavator Specifications

## Major Component Weights

	kg
Undercarriage (without track)	
Long Undercarriage	9100
Long Hydraulic Variable Gauge (HVG) Undercarriage	14 300
Upper Structure (without front linkage)	10 900
Counterweight	8500
2PB Counterweight	7000
Base Boom and UHD Boom Nose (includes lines, pins, base boom cylinder and intermediate boom cylinder)	7100
UHD Fore Boom (includes lines and stick cylinder)	1300
2PB Fore Boom	3000
Base Boom and Retrofit Boom Nose (includes lines, pins, base boom cylinder and stick cylinder)	6600
UHD Stick (includes lines, pins, bucket cylinder and coupler)	2500
Stick (includes lines, pins, bucket cylinder)	
HD R3.2 Stick	2200
HD R2.8 Stick	1900
HD R3.9 Stick	2100
HD R3.2 Stick for 2PB	2200
Track Shoes	
700 mm Triple Grouser	4400
600 mm Triple Grouser HD	4700
600 mm Double Grouser	4800
Crusher	
UHD for Long Undercarriage	2900
UHD for Long Hydraulic Variable Gauge	3100
For 2PB	4500/3500
Bucket	
DB1460HD	1400

Base machine includes 75 kg operator weight, 90% fuel weight, and undercarriage with center guard.

# 340F UHD Ultra High Demolition Hydraulic Excavator Specifications

## Work Tool Offering Guide (UHD Fronts)\*

Boom Option	UHD Boom
Stick Option	UHD Stick
Undercarriage Options	Long/Hydraulic Variable Gauge
Multi-Processor	MP318
	MP324
Demolition and Sorting Grapple	G320B
	G325B
Scrap and Demolition Shear	S320B
	S325B

\*Matches are dependent on excavator configurations. Consult your Cat dealer for proper work tool match.



# 340F UHD Ultra High Demolition Hydraulic Excavator Specifications

## Work Tool Offering Guide (Retrofit Fronts)†

Boom Options		Bent	Straight	Bent			Straight		
Stick Options		R3.2	R3.2	R3.9	R3.2	R2.8	R3.9	R3.2	R2.8
Undercarriage Options		Long		Hydraulic Variable Gauge					
Hydraulic Hammer	H140Es								
	H160Es		**				**	**	**
Multi-Processor	MP30 CC Jaw		#	**			**	**	**
	MP30 CR Jaw		#	**			**	**	**
	MP30 PP Jaw	^		**					
	MP30 PS Jaw		#	*			**	**	**
	MP30 S Jaw		#	*			**	**	**
	MP30 TS Jaw	^							
Pulverizer	P235			**					
Demolition and Sorting Grapple	G325B-D/R								
	G330		**	**			**	**	**
Scrap and Demolition Shear	S3050	**			**	*			
	S3070			#			#		

†Matches are dependent on excavator configurations. Consult your Cat dealer for proper work tool match.

\* Match

\*\* Match; Pin-on or Cat PG

# Match; Pin-on only

^ Work over the front only with Cat PG (match; Pin-on and Cat PG)

**Note:** Demolition and Sorting Grapple: D—Demolition shells, R—Recycling shells

# 340F UHD Ultra High Demolition Hydraulic Excavator Specifications

## Bucket Specifications and Compatibility (Retrofit Fronts)

	Linkage	Width	Capacity	Weight	Fill	Long Undercarriage		Hydraulic Variable Gauge Undercarriage					
						Retrofit Boom							
						Bent Position	Straight Position	Bent Position			Straight Position		
		mm	m³	kg	%	R3.2HD	R3.2HD	R2.8HD	R3.2HD	R3.9HD	R2.8HD	R3.2HD	R3.9HD
Without Quick Coupler													
Heavy Duty (HD)	DB	1460	1.4	1350	100	●	⊖	●	●	●	●	●	●
Maximum load pin-on (payload + bucket)					kg	5455	4240	7190	6910	6130	5765	5500	4875

The above loads are in compliance with hydraulic excavator standard EN474, they do not exceed 87% of hydraulic lifting capacity or 75% of tipping capacity with front linkage fully extended at ground line with bucket curled.

Capacity based on ISO 7451.

Bucket weight with General Duty tips.

### Maximum Material Density:

● 2100 kg/m³

⊖ 1500 kg/m³

Caterpillar recommends using appropriate work tools to maximize the value customers receive from our products. Use of work tools, including buckets, which are outside of Caterpillar's recommendations or specifications for weight, dimensions, flows, pressures, etc. may result in less-than-optimal performance, including but not limited to reductions in production, stability, reliability, and component durability. Improper use of a work tool resulting in sweeping, prying, twisting and/or catching of heavy loads will reduce the life of the boom and stick.

# 340F UHD Standard Equipment

## Standard Equipment

Standard equipment may vary. Consult your Cat dealer for details.

### ELECTRICAL

- 80 amp alternator
- Circuit breaker
- Battery, standard
- Beacon

### ENGINE

- Cat C9.3 ACERT diesel engine
- Meets Japan 2014 (Tier 4 Final) emission standards
- 2300 m altitude capability with no derate
- Automatic engine speed control
- Electric priming pump
- Water separator in fuel line including water level sensor and indicator
- High, economy and standard power modes
- Air cleaner
- Radial seal air filter
- Side-by-side cooling system
- Primary filter with water separator and water separator indicator switch
- Starting kit, cold weather, -18° C
- Fuel differential indicator switch in fuel line
- 2×4 micron main filters and 1×10 micron primary filter in fuel line

### HYDRAULIC SYSTEM

- Reverse swing damping valve
- Automatic swing parking brake
- High-performance hydraulic return filter
- Regeneration circuit for boom and stick
- QC Control

### FRONT LINKAGE

- UHD boom nose with left/right lights:
  - Fore boom with left/right lights
  - UHD 7.1 m stick
  - CB linkage with lifting eye
  - Cylinder bucket

### CAB

- Demolition cab with P5A glass (front and top)
- Parallel wiper and washer (front and top)
- Mirrors
- Pressurized operator station with positive filtration
- Sliding upper door window (left-hand cab door)
- Interior:
  - Coat hook
  - Beverage holder
  - Literature holder
  - Interior lighting
  - AM/FM radio mounting (DIN size)
  - Two 12V stereo speakers
  - Storage shelf suitable for lunch or toolbox
  - Power supply with 12V, two power outlets (10 amp)
  - Thumb wheel modulation joysticks for use with combined auxiliary control
  - Air conditioner, heater and defroster with climate control
- Seat:
  - Adjustable high-back, heated/ventilated seat with air suspension
  - Seat belt, 51 mm
  - Adjustable armrest
  - Height adjustable joystick consoles
  - Neutral lever (lock out) for all controls
  - Travel control pedals with removable hand levers
  - Two speed travel
  - Floor mat, washable
- Monitor:
  - Clock
  - Video ready
  - Color LCD display with warning, filter/fluid change, and working hour information
  - Language display (full graphic and full color display)
  - Machine condition, error code and tool mode setting information
  - Start-up level check for engine oil, engine coolant and hydraulic oil
  - Warning, filter/fluid change and working hour information
  - Fuel consumption meter
- Windshield:
  - One-piece, fixed
- Sun screen

### UNDERCARRIAGE/UPPERFRAME

- Grease Lubricated Track GLT2, resin seal
- Heavy duty track roller
- Towing eye on base frame
- HD bottom guard
- HD travel motor guard
- Swivel guard
- Counterweight, 8.45 mt on UHD, 7.0 mt on 2PB

### LIGHTS

- Cab and boom lights with time delay (halogen)
- Exterior lights integrated into storage box

### SAFETY AND SECURITY

- Cat one key security system
- Door locks
- Cap locks on fuel and hydraulic tanks
- Lockable external tool/storage box
- Signaling/warning horn
- Secondary engine shutoff switch
- Mirrors
- Rearview and side-view cameras

### CAT CONNECT TECHNOLOGIES

- Product Link
- Rear vision and side vision cameras

### GUARDS

- FOGS (Falling Object Guard System) including overhead and windshield guards

## Optional Equipment

Optional equipment may vary. Consult your Cat dealer for details.

### ENGINE

- Quick drains, engine and hydraulic oil (QuickEvac™)

### HYDRAULIC SYSTEM

- HP hydraulic lines for stick
- MP hydraulic lines for stick
- QC hydraulic lines for stick

### FRONT LINKAGE

- Retrofit Reach boom nose with left/right lights
- R2.8DB stick
- R3.2DB stick
- R3.9DB stick
- DB linkage with lifting eye
- Cradle for UHD front parts
- Cradle for Retrofit front parts

### TRACKS

- 600 mm double grouser tracks
- 600 mm triple grouser HD tracks
- 700 mm triple grouser tracks

### ELECTRICAL

- Cold weather starting package, 240V, -32° C

### GUARDS

- Rubber bumpers on upperframe
- Track guiding guards:
  - Full length
  - Center

For more complete information on Cat products, dealer services, and industry solutions, visit us on the web at [www.cat.com](http://www.cat.com)

AEHQ8070 (10-2017)  
(Japan)

© 2017 Caterpillar  
All rights reserved

Materials and specifications are subject to change without notice. Featured machines in photos may include additional equipment. See your Cat dealer for available options.

CAT, CATERPILLAR, SAFETY.CAT.COM, their respective logos, "Caterpillar Yellow" and the "Power Edge" trade dress, as well as corporate and product identity used herein, are trademarks of Caterpillar and may not be used without permission.

VisionLink is a trademark of Trimble Navigation Limited, registered in the United States and in other countries.

Based on the Labor, Safety and Health Laws in Japan, employer of small construction equipment are required to provide specific training for all operators on machines with ship weight less than 3 metric ton. For machines greater than 3 metric ton, operator needs to obtain operator license certification from a Government approved registered training school.

