

# AGRICULTURE ATTACHMENTS

TACKLE MORE TASKS WHILE MITIGATING COSTS WITH YOUR CAT® MACHINE.

Cat Skid Steer Loaders, Multi Terrain Loaders, Compact Track Loaders, Backhoe Loaders, Small Wheel Loaders and Mini Excavators

For more information, visit  
[Cat.com/attachments](http://Cat.com/attachments) or  
contact your local Cat dealer.



**BUILT FOR IT.™**

AEXQ2313-00 May 2017

© 2017 Caterpillar. All Rights Reserved. CAT, CATERPILLAR, BUILT FOR IT, their respective logos, "Caterpillar Yellow," the "Power Edge" trade dress, as well as corporate and product identity used herein, are trademarks of Caterpillar and may not be used without permission.

**BUILT FOR IT.™**



## MOVE MATERIAL, SPREAD FEED AND KEEP OPERATIONS ON SCHEDULE.

We offer more than a dozen agriculture attachments, all made to keep your operation on task and on schedule. Cat attachments can renew the life of your existing fleet. And they're designed to maximize Cat machine performance so you get more use at a lower cost.

## WORK WITHOUT WORRY.

We back our attachments with a one-year warranty and ongoing Cat dealer support. It's another way we're helping protect what you rely on.



# AUGERS



## Bore with better efficiency.

Our augers offer different speed and torque options for work in a variety of soils. We've engineered their speed to extract soil efficiently and their torque to prevent stalling in dense ground. Select from a range of auger bits.

### Specifications

Attachment Models	Compatibility	Drive Shaft Torque @ Max Pressure		Drive Method
		Nm	(lb ft)	
A14B	CTL, MTL, SSL	2304	(1700)	Direct Drive
A19B	CTL, MTL, SSL	4122	(3042)	Single Planetary
A26B	CTL, MTL, SSL	6830	(5040)	Double Planetary
A7B	MHEX	1105	(815)	Direct Drive
A14B	MHEX	2304	(1700)	Direct Drive
A19B	MHEX	4122	(3042)	Single Planetary
A26B	MHEX	6830	(5040)	Double Planetary
A 26B Pin-on	BHL	6830	(5040)	Double Planetary

BHL: Backhoe Loader  
 CTL: Compact Track Loader  
 MHEX: Mini Excavator

MTL: Multi Terrain Loader  
 SSL: Skid Steer Loader

Certain models within the family of machines listed may not be compatible with the attachment. Please consult your Cat dealer for further information.

# BALE GRABS



## Grab baled material with greater precision.

Use our bale grabs for grasping, carrying and placing large baled materials. Their tubular arms eliminate damage to the wrapping or bale itself, while the rigid, high-strength steel frame extends working life. This attachment also comes with hardened pins and easily accessible grease points for greater productivity and a bolt-on step for safer cab access.

### Specifications

Attachment Models	Compatibility	Weight		Maximum opening width		Internal width w/ closed arms	
		kg	(lb)	mm	(in)	mm	(in)
1803 mm (71 in)	CTL, MTL, SSL	261	575	1803	71	940	37
2133 mm (84 in)	CTL, MTL, SSL	263	580	2133	84	918	36

CTL: Compact Track Loader  
 MTL: Multi Terrain Loader

SSL: Skid Steer Loader

Certain models within the family of machines listed may not be compatible with the attachment. Please consult your Cat dealer for further information.

# BALE SPEARS



## Make moving bales simple.

Select from our single or dual spear design, both ideal for removing or placing bales in a stack. Our single-spear models include stabilizers and dual-spear models feature a high backrest for large loads. Spears are easily replaced and frames offer a bolt-on step.

### Specifications

Attachment Models	Compatibility	Overall Width		Weight	
		mm	(in)	kg	(lb)
990 mm (39 in) Single Tine	CTL, MTL, SSL	1285	(51)	70	(154)
1245 mm (49 in) Single Tine	CTL, MTL, SSL	1285	(51)	72	(158)
990 mm (39 in) Dual Tine	CTL, MTL, SSL	1407	(55)	118	(260)
1245 mm (49 in) Dual Tine	CTL, MTL, SSL	1407	(55)	121	(266)

CTL: Compact Track Loader  
 MTL: Multi Terrain Loader  
 SSL: Skid Steer Loader

Certain models within the family of machines listed may not be compatible with the attachment. Please consult your Cat dealer for further information.

# BRUSHCUTTERS



## Clear overgrowth effectively.

Reduce vegetation, brush and trees with an 80 mm (3 in) diameter or less into a coarse byproduct. Select from a range of lengths and widths.

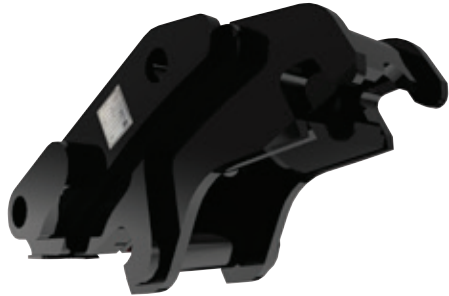
### Specifications

Attachment Models	Compatibility	Working Width		Tip Speed		Unit Weight	
		mm	(in)	m/min	(fpm)	kg	(lb)
BR160	CTL, MTL, SSL	1524	(60)	3987-5596	(13080-18360)	431	(950)
BR166	CTL, MTL, SSL	1676	(66)	3130-4395	(10270-14420)	476	(1050)
BR172	CTL, MTL, SSL	1829	(72)	3417-4795	(11210-15730)	499	(1100)
BR272	CTL, MTL, SSL	1829	(72)	4554-5992	(14940-19660)	508	(1120)
BR378	CTL, MTL, SSL	1981	(78)	4176-6032	(13700-19790)	535	(1180)

CTL: Compact Track Loader  
 MTL: Multi Terrain Loader  
 SSL: Skid Steer Loader

Certain models within the family of machines listed may not be compatible with the attachment. Please consult your Cat dealer for further information.

# COUPLERS



## Move quickly from task to task.

Our Dual Lock™ Pin Grabber Couplers allow operators to change attachments in seconds, increasing job efficiency and enabling one machine to do multiple tasks. We offer two, easy-to-use options: hydraulic (controlled from the cab) and mechanical. And all Cat models include primary and secondary locking systems to ensure what you put on your machine, stays on.

### Specifications

Attachment Models	Compatibility	Weight	
		kg	(lb)
Dual Lock™	BHL, MHEX	14-89	(32-195)
Dual Lock™ Tilt	MHEX	112-198	(245-436)
Fusion™	SWL	252-392	(556-865)

BHL: Backhoe Loader  
MHEX: Mini Excavator  
SWL: Small Wheel Loader

Certain models within the family of machines listed may not be compatible with the attachment. Please consult your Cat dealer for further information.

# HEAVY DUTY BUCKETS

## Move harsh soils with minimal wear.

Dig, trench or backfill with our heavy duty buckets. They're made to excavate in abrasive soils and move large loads. Select from a range of bucket sizes and teeth.



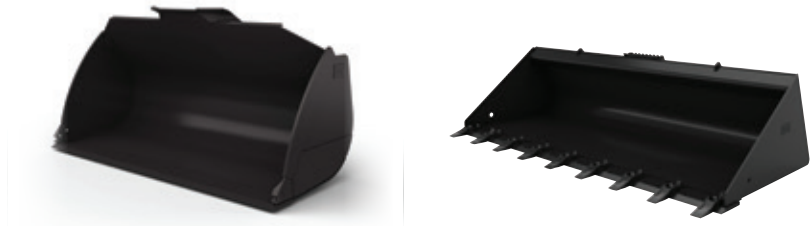
### Specifications

Attachment Models	Compatibility	Width Range		Capacity Range	
		mm	(in)	m³	(yd³)
Digging	MHEX	230-270	(9-28)	0.014-0.111	(0.018-0.145)
Ditch Cleaning	MHEX	700-1600	(28-63)	0.027-0.421	(0.035-0.55)
Tilting Ditch Cleaning	MHEX	1000-1600	(40-63)	0.055-0.28	(0.071-0.366)
Heavy Duty	MHEX	300-914	(12-36)	0.05-0.39	(0.065-0.51)
Heavy Duty Capacity	MHEX	300-915	(12-36)	0.082-0.300	(0.107-0.392)
Heavy Duty Rock	MHEX	610-762	(24-30)	0.23-0.31	(0.30-0.405)
Grading	MHEX	1000-1500	(39-59)	0.09-0.52	(0.12-0.68)
Coral	BHL	305-762	(12-30)	0.06-0.19	(0.08-0.25)
Ditch Cleaning	BHL	1219-1524	(48-60)	0.37-0.57	(0.48-0.74)
Heavy Duty	BHL	305-914	(12-36)	0.08-0.44	(0.1-0.57)
Heavy Duty Rock	BHL	305-914	(12-36)	0.07-0.33	(0.09-0.43)
Grading	BHL	1200-1500	(47-60)	0.41-0.52	(0.54-0.68)
Soil Excavation	BHL	457-914	(18-36)	0.18-0.38	(0.23-0.5)
Standard Duty	BHL	305-914	(12-36)	0.08-0.29	(0.1-0.38)
High Capacity	BHL	305-914	(12-36)	0.13-0.46	(0.17-0.60)

BHL: Backhoe Loader      MHEX: Mini Excavator

Certain models within the family of machines listed may not be compatible with the attachment. Please consult your Cat dealer for further information.

# GENERAL PURPOSE BUCKETS



## Work with mildly abrasive materials.

Our general purpose buckets are ideal for digging in low-impact, moderately abrasive materials such as dirt, loam, gravel and clay. Select from a range of bucket sizes and teeth.

### Specifications

Attachment Models	Compatibility	Width Range		Capacity Range	
		mm	(in)	m <sup>3</sup>	(yd <sup>3</sup> )
General Purpose	BHL	2262-2434	(89-96)	0.76-1.5	(1.0-2.0)
General Purpose	CTL, MTL, SSL	1524-2134	(60-84)	0.36-0.63	(0.47-0.82)
General Purpose Performance Series	SWL	2550-2750	(100-108)	1.9-2.9	(2.5-3.8)

BHL: Backhoe Loader  
 CTL: Compact Track Loader  
 MTL: Multi Terrain Loader  
 SSL: Skid Steer Loader  
 SWL: Small Wheel Loader

Certain models within the family of machines listed may not be compatible with the attachment. Please consult your Cat dealer for further information.

# LIGHT MATERIAL BUCKETS



## Move more in a single scoop.

Our light material buckets are designed to move high volumes of low-density material such as bedding, dry topsoil, fertilizer, feed and snow.

### Specifications

Attachment Models	Compatibility	Width Range		Capacity Range	
		mm	(in)	m <sup>3</sup>	(yd <sup>3</sup> )
Light Material	CTL, MTL, SSL	1829-2438	(72-96)	0.69-0.93	(0.9-1.22)
Light Material	SWL	2750	(108)	3.10-5.5	(4.00-7.20)

CTL: Compact Track Loader  
 MTL: Multi Terrain Loader  
 SSL: Skid Steer Loader  
 SWL: Small Wheel Loader

Certain models within the family of machines listed may not be compatible with the attachment. Please consult your Cat dealer for further information.

# MATERIAL HANDLING BUCKETS



## Load and unload with ease.

With a large capacity and optimal shape for loading, our material handling buckets are ideal for stockpiling, carrying, dumping and backfilling.

### Specifications

Attachment Models	Compatibility	Width Range		Capacity Range	
		mm	(in)	m <sup>3</sup>	(yd <sup>3</sup> )
Material Handling	CTL, MTL, SSL	2134-2591	(84-102)	1.07-1.33	(1.40-1.74)

CTL: Compact Track Loader  
 MTL: Multi Terrain Loader  
 SSL: Skid Steer Loader

Certain models within the family of machines listed may not be compatible with the attachment. Please consult your Cat dealer for further information.

# MULTI-PURPOSE BUCKETS



## Use one bucket to do the job of many.

Our multi-purpose buckets are one of our most versatile buckets. With a clam design, bolt-on cutting edge and spill guard, they easily doze, grade, level and unload material.

### Specifications

Attachment Models	Compatibility	Width Range		Capacity Range	
		mm	(in)	m <sup>3</sup>	(yd <sup>3</sup> )
Multi-Purpose	BHL	2262-2425	(89-95)	1.0-1.2	(1.3-1.5)
Multi-Purpose	CTL, MTL, SSL	1524-2134	(60-84)	0.3-0.43	(0.39-0.56)

BHL: Backhoe Loader  
 CTL: Compact Track Loader  
 MTL: Multi Terrain Loader  
 SSL: Skid Steer Loader

Certain models within the family of machines listed may not be compatible with the attachment. Please consult your Cat dealer for further information.

# MATERIAL HANDLING ARMS



## Carry and place with precision.

Safely transport non-uniform materials, as well as carry and plant trees or shrubs. Cat material handling arms offer two lift points, each set up to hold a locking hook capable of swiveling 360 degrees.

### Specifications

Attachment Models	Compatibility	Retracted Length		Extended Length	
		mm	(in)	mm	(in)
Extendible	SWL	2760	(109)	4137	(163)
Fixed Length	CTL, MTL, SSL	1309	(52)	2134	(84)
		<b>Width w/ Side Step</b>		<b>Maximum Reach</b>	

CTL: Compact Track Loader	SWL: Small Wheel Loader
MTL: Multi Terrain Loader	
SSL: Skid Steer Loader	

Certain models within the family of machines listed may not be compatible with the attachment. Please consult your Cat dealer for further information.

# PALLET FORKS



## Properly transport palletized materials.

From standard hay bales to stacked feedbags, our pallet forks were designed for stable transportation. Our frame features a tall backboard to secure the load for improved safety and efficiency.

### Specifications

Compatibility	Tine Length		Fork Tine Width	
	mm	(in)	mm	(in)
BHL	1067-1372	(42-54)	127	(5.0)
CTL, MTL, SSL	910-1220	(36-48)	100	(4)
	<b>Tine Length</b>		<b>Carriage Width</b>	
SWL	1220-1524	(48-60)	1524	(60)

BHL: Backhoe Loader	SSL: Skid Steer Loader
CTL: Compact Track Loader	SWL: Small Wheel Loader
MTL: Multi Terrain Loader	

Certain models within the family of machines listed may not be compatible with the attachment. Please consult your Cat dealer for further information.



# RIPPERS



## Tear up more terrain.

Built to cut through dense dirt, loosen rocky soil and break below the frost layer, Cat rippers are taking on some of the most challenging ground conditions. And because they're made for specific Cat models, they can better transfer machine power into ripping power.

### Specifications

Attachment Models (Shank Length)		Compatibility	Width		Width		Tip Radius		Weight	
mm	(in)		mm	(in)	mm	(in)	mm	(in)	kg	(lb)
490	(19)	MHEX	232	(9.1)	660	(25.9)	650	(26)	45	(99)
676	(27)	MHEX	273	(10.7)	825	(32.4)	810	(32)	61	(134)
861	(34)	MHEX	346	(13.6)	1074	(42.2)	1039	(41)	107	(235)

MHEX: Mini Excavator

Certain models within the family of machines listed may not be compatible with the attachment. Please consult your Cat dealer for further information.

# SILAGE DEFACERS



## Powering through the bunkers.

Featuring high tensile strength teeth positioned in a helical pattern, our silage defacers free and work loose compacted silage bunkers without damaging or cutting the material. They're also equipped with dual in-board hydraulic motors for stall-free operation and peak torque to power through the densest of silage bunks.

### Specifications

Attachment Models	Compatibility	Overall Width		Weight		Flow Range	
		mm	(in)	kg	(lb)	L/min	(GPM)
DFS118	CTL, CWL, MTL, SSL	1841	72.5	425	937	75-90	20-23
DFS121	CTL, CWL, MTL, SSL	5146	84.5	477	1052	75-90	20-23
DFS124	CTL, CWL, MTL, SSL	2451	96.5	503	1109	75-90	20-23

CTL: Compact Track Loader      MTL: Multi Terrain Loader  
 CWL: Compact Wheel Loader      SSL: Skid Steer Loader

Certain models within the family of machines listed may not be compatible with the attachment. Please consult your Cat dealer for further information.

# THUMBS



## Go from digging to material handling.

Our thumbs work with buckets and rippers to grab, pick, or sort material. They're offered with stiff link or are hydraulically controlled from the cab, opening and closing around loads. And when you don't need it, the thumb can recline against the machine stick.

### Specifications

Attachment Models	Compatibility	Rotation Angle
		degrees
Hydraulic	BHL	105
Hydraulic	MHEX	116-133

BHL: Backhoe Loader  
MHEX: Mini Excavator

Certain models within the family of machines listed may not be compatible with the attachment. Please consult your Cat dealer for further information.

# UTILITY GRAPPLE FORKS



## Transport light material — in less time.

With a series of straight tines, our utility grapple fork can pierce bundles of straw, hay and dried waste. The curved upper jaw holds material on the tines to help retain the mass.

### Specifications

Compatibility	Fork Width		Fork Tine Length	
	mm	(in)	mm	(in)
CTL, MTL, SSL	1676-1829	(66-72)	940	(37)

CTL: Compact Track Loader  
MTL: Multi Terrain Loader  
SSL: Skid Steer Loader

Certain models within the family of machines listed may not be compatible with the attachment. Please consult your Cat dealer for further information.

# COMPATIBILITY



Backhoe Loaders



Mini Excavators



Skid Steer Loaders,  
Compact Track Loaders,  
Multi Terrain Loaders



Small Wheel Loaders



