



Cat[®] TH255C

TELEHANDLER

FEATURES:

- Compact Dimensions** – The TH255C is purpose built to be able to gain entrance to narrow spaces and navigate space constrained sites. The super compact telehandler is perfect for working in small spaces and low buildings.
- Power Train** – Designed for a range of construction and agricultural applications, the Cat[®] TH255C features an efficient 55 kW (74 hp) engine coupled to a hydrostatic transmission.
- Versatility** – In order to help you get the most out of your machine, the Cat TH255C is exceptionally versatile and can use a range of attachments, including those fitting a universal quick coupler.

Specifications

Engine

| | | |
|----------------------------|-------------|---------------------|
| Model | TD 2.9L L4* | |
| Gross Power | 55 kW | 74 hp |
| Maximum Torque @ 1,800 rpm | 260 N-m | 193 lbf-ft |
| Displacement | 2.9 L | 177 in ³ |

*Emits equivalent to U.S. EPA Tier 4 Interim

Weights

| | | |
|--|---------|-----------|
| Operating Weight with Carriage and Forks | 4999 kg | 11,000 lb |
|--|---------|-----------|

Service Refill Capacities

| | | |
|------------------|------|--------|
| Fuel Tank | 91 L | 24 gal |
| Hydraulic System | 91 L | 24 gal |

Operating Specifications

| | Standard Coupler | | Universal Quick Coupler | |
|----------------------------|------------------|-------------|-------------------------|-------------|
| Rated Load Capacity | 2500 kg | 5,500 lb | 2500 kg | 5,500 lb |
| Maximum Lift Height | 5600 mm | 18 ft 4 in | 5600 mm | 18 ft 4 in |
| Maximum Forward Reach | 3300 mm | 10 ft 11 in | 3300 mm | 10 ft 11 in |
| Capacity at Maximum Height | 1996 kg | 4,400 lb | 1360 kg | 3,000 lb |
| Capacity at Maximum Reach | 839 kg | 1,850 lb | 771 kg | 1,700 lb |
| Turning Radius over Tires | | | | |
| 12 × 16.5 Tires | 3200 mm | 127 in | 3200 mm | 127 in |
| 14 × 17.5 Tires | 3100 mm | 125 in | 3100 mm | 125 in |
| Top Travel Speed | | | | |
| 12 × 16.5 Tires | 24 km/h | 15 mph | 24 km/h | 15 mph |
| 14 × 17.5 Tires | 27 km/h | 17 mph | 27 km/h | 17 mph |

TH255C Telehandler

Tires

| | |
|----------|---|
| Standard | 12.00 × 16.5 |
| Optional | 14.00 × 17.5 10.5 × 18 33 × 12-20 non-marking |

Brakes

| | |
|----------------|---|
| Service Brakes | Inboard wet disc brakes on front axle |
| Parking Brakes | Wet disc spring-applied hydraulic release |

- Light on dash indicates when brake is on.

Axles

- Planetary on front and rear axles.
- High bias limited slip differential on front axle.

Hydraulic System – Implement

| | | |
|-------------------------|------------|------------|
| Pump Type | Gear pump | |
| Maximum System Pressure | 241 bar | 3,500 psi |
| Maximum Auxiliary Flow | 72.3 L/min | 19 gal/min |

- Auxiliary Hydraulic Circuit used for all attachments equipped with cylinders or other hydraulic components. Consists of valves, controls, and hydraulic lines.

Transmission

| | |
|--------------|----------------|
| Transmission | Hydrostatic |
| Forward | Variable Speed |
| Reverse | Variable Speed |

Boom Performance

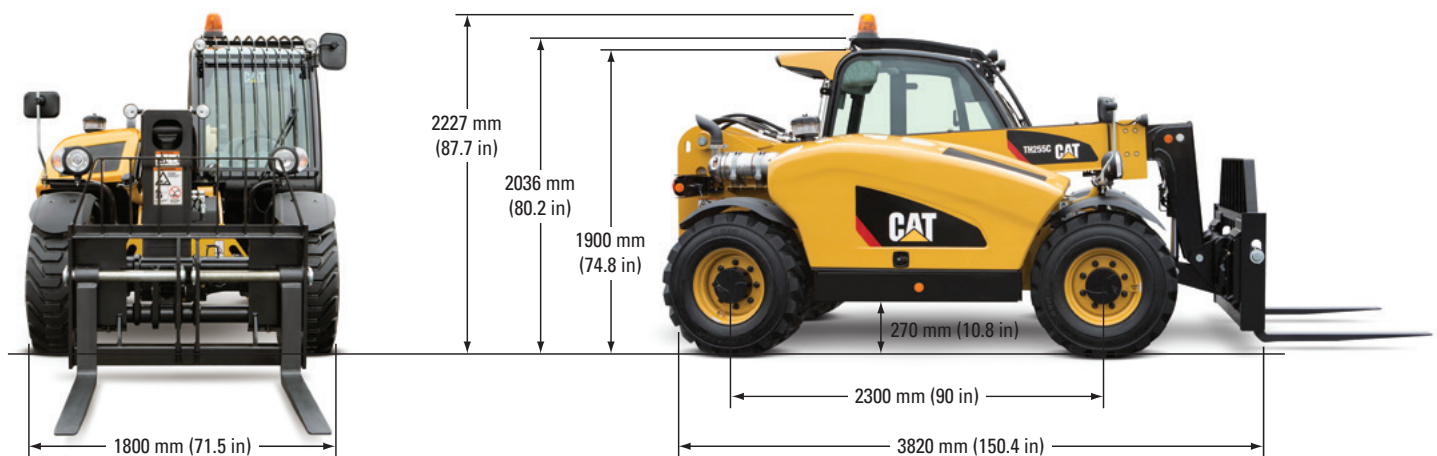
| | | |
|-----------------------|-------------|----------|
| Boom Up | 6.8 Seconds | |
| Boom Down | 4.6 Seconds | |
| Tele In | 3.8 Seconds | |
| Tele Out | 6.7 Seconds | |
| Bucket Dump | 2.5 Seconds | |
| Bucket Crowd | 2.0 Seconds | |
| Drawbar Pull (Loaded) | 38.7 kN | 8,700 lb |

Instruments

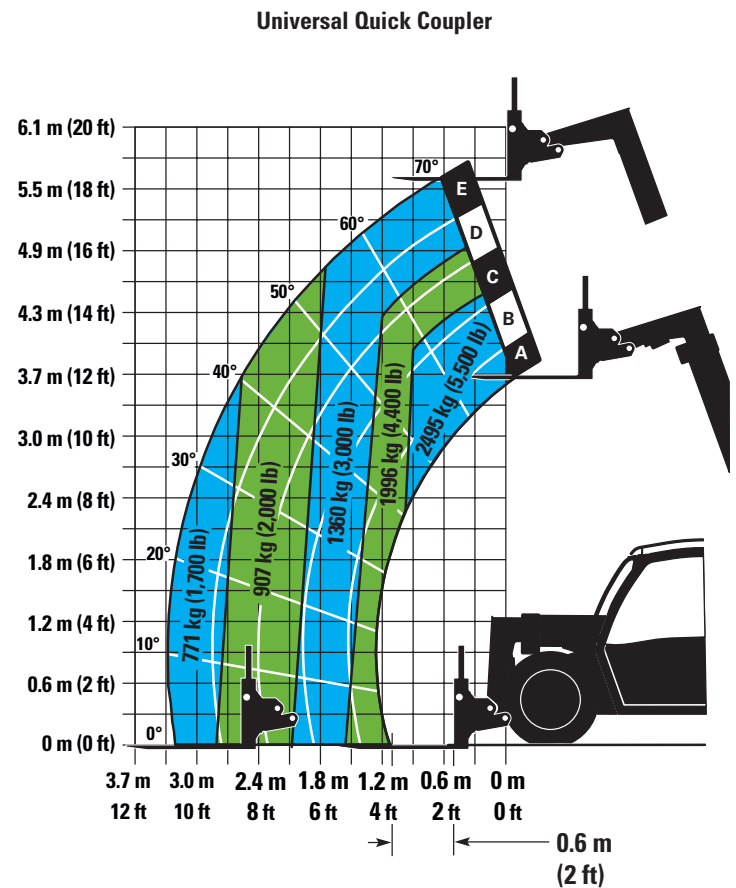
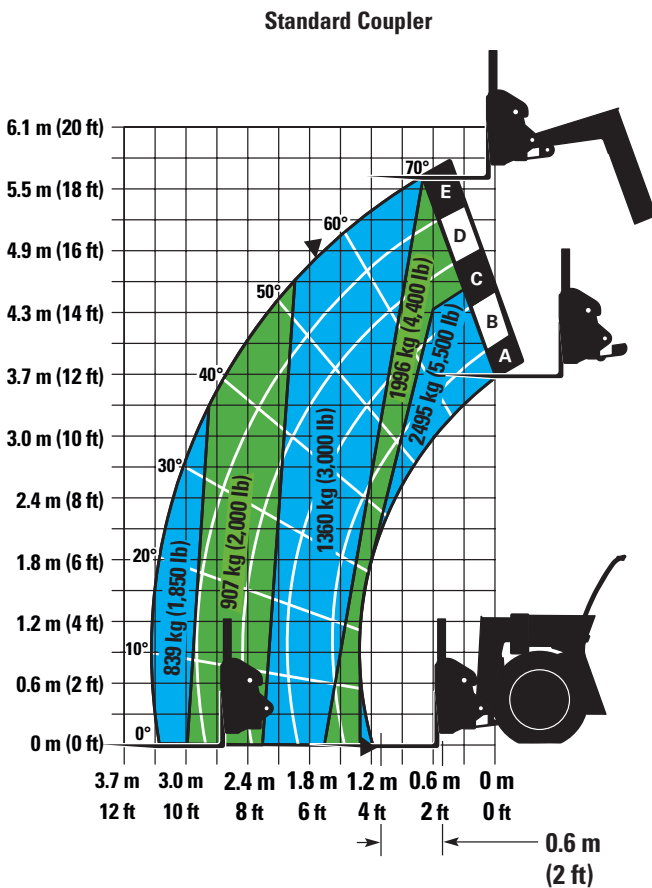
- Indicators for machine hours, fuel-level, steer mode, steering pressure, battery charge, coolant temperature, parking brake and engine pre-heat.
- Reverse motion alarm.
- Panel and switches are illuminated for night operation.

Dimensions

All dimensions are approximate.



Load Chart and Dimensions



IMPORTANT

Rated lift capacities shown are with machine equipped with carriage and pallet forks. The machine must be level on a firm surface with undamaged, properly inflated tires. Machine specifications and stability are based on rated lift capacities at specific boom angles and boom lengths. (If specifications are critical, the proposed application should be discussed with your dealer.)

DO NOT exceed rated lift capacity loads, as unstable and dangerous machine conditions will result.

DO NOT tip the machine forward to determine the allowable load.

Use only JLG approved attachments with proper material handler model/ attachment load capacity charts displayed in the operator's cab. OSHA requires all rough terrain forklift operators be trained according to OSHA 29 CFR 1910.178 (1).

Due to continuous product improvements, machine specifications and/or equipment changes may be made without prior notification. This machine meets or exceeds ANSI/ITSDF B56.6-2016 as originally manufactured for intended applications.

TH255C Telehandler

Standard and Optional Equipment (Standard and Optional equipment may vary. Consult your Cat dealer for details.)

| | Standard | Optional | | Standard | Optional |
|--|----------|----------|--|----------|----------|
| Cab ROPS and FOPS | | | Tires | | |
| Canopy, Fixed Steering Column | ✓ | — | Mitas 12 × 16.5, Pneumatic | ✓ | — |
| Canopy, Tilt Steering Column | — | ✓ | 14 × 17.5, Pneumatic | — | ✓ |
| Cab Enclosed with Heat | — | ✓ | 12 × 16.5, Foam | — | ✓ |
| Cab Enclosed with Heat and Air Conditioning | — | ✓ | 14 × 17.5, Foam | — | ✓ |
| Sunscreen | ✓ | — | 10.5-18, Pneumatic | — | ✓ |
| Mechanical Suspension Seat with Seat Belt | ✓ | — | 33 × 22, Solid Non-Marking | — | ✓ |
| Screen Guard | — | ✓ | Tow Hitches | | |
| Roof Guard | — | ✓ | Retrieval Hitch | — | ✓ |
| Heater/De-mister | — | ✓ | Manual Hitch | — | ✓ |
| Air Conditioning | — | ✓ | Automatic Adjustable Hitch | — | ✓ |
| Seatbelt, 76 mm (3 in) | — | ✓ | Quick Couplers | | |
| Column Mounted FNR Lever | — | ✓ | Manual Quick Coupler | ✓ | — |
| Front, Rear, and Roof Wipers | — | ✓ | Hydraulic Quick Coupler | — | ✓ |
| Mechanical Parking Brake | ✓ | — | • Standard Coupler or Universal Quick Coupler options are available, and must be selected, please consult your Cat dealer for details. | | |
| Electrical | | | Work Tools | | |
| 1 × 12V 1,000 CCA Battery | ✓ | — | Floating Fork Carriage | — | ✓ |
| Block Heater 110 Volt | — | ✓ | Side Shift Carriage | — | ✓ |
| Work Lights, 4 × Cab Mounted (2 front, 2 rear) 2 × Boom Mounted | — | ✓ | Side Tilt/Rotate Carriage | — | ✓ |
| Product Link™ Ready, Version 641 | — | ✓ | 0.36 m ³ (0.48 yd ³) Multi Purpose Bucket | — | ✓ |
| Seven (7) Pin Trailer Service | — | ✓ | 0.76 m ³ (1.0 yd ³) General Purpose Bucket | — | ✓ |
| Reverse Alarm | ✓ | — | 0.76 m ³ (1.0 yd ³) Grapple Bucket | — | ✓ |
| Rotating Beacon | — | ✓ | 1.0 m ³ (1.3 yd ³) Multi Purpose Bucket | — | ✓ |
| Radio Ready | — | ✓ | 1.5 m ³ (1.95 yd ³) Light Material Bucket | — | ✓ |
| Battery Disconnect | — | ✓ | 1225 mm (48 in) Bale Fork | — | ✓ |
| Other Equipment | | | Grapple Bucket | — | ✓ |
| Boom Brushes | ✓ | — | Muck Fork and Grapple | — | ✓ |
| Single Auxiliary Service to Boom Head | ✓ | — | Material Handling Arm for Universal Quick Coupler | — | ✓ |
| Auxiliary Service to Rear | — | ✓ | | | |
| Rear Hitch Mirror, Flat | — | ✓ | | | |
| Rear Hitch Mirror, Convex | — | ✓ | | | |
| Tool Box | — | ✓ | | | |
| Boom Safety Brace | — | ✓ | | | |
| Wheel Chocks | — | ✓ | | | |
| Remote Grease System | — | ✓ | | | |

For more complete information on Cat products, dealer services, and industry solutions, visit us on the web at www.cat.com

© 2020 Caterpillar
All rights reserved

Materials and specifications are subject to change without notice. Featured machines in photos may include additional equipment. See your Cat dealer for available options.

CAT, CATERPILLAR, LET'S DO THE WORK, their respective logos, "Caterpillar Corporate Yellow," the "Power Edge" and Cat "Modern Hex" trade dress as well as corporate and product identity used herein, are trademarks of Caterpillar and may not be used without permission.

AEHQ8067-01 (10-2019)
Replaces AEHQ8067
(Americas North, HRC)

