

314F

Hydraulic Excavator

2017



Engine

Engine Model	Cat® C4.4 ACERT™
Net Power – SAE J1349	72.3 kW
Engine Power – ISO 14396	74.4 kW

Drive

Maximum Travel Speed	5.5 km/h
Maximum Drawbar Pull	113 kN

Weight

Minimum Operating Weight	13 300 kg
Maximum Operating Weight	15 200 kg



オフロード法2014年
基準適合

Introduction

The new Cat 314F compact radius excavator features a C4.4 ACERT engine that meets Japan 2014 (Tier 4 Final) emission standards and is miserly on fuel, paired with a state-of-the-art hydraulic system that's responsive to your every command. Each pull of the joysticks will feel like a natural extension of yourself, providing you with smooth, controlled power to take on the work in front of you with speed, precision, and confidence.

When you add in robust structures that keep you grounded and balanced, an operator environment that enhances your comfort and productivity, service points that make your routine maintenance fast and simple, available Cat Grade Control to help you create precise planes and slopes with ease, and multiple Cat work tools and tool control system that enable you to quickly take on a variety of tasks, you simply won't find a better built, more reliable, more versatile, or more rewarding excavator in its size class – from any company, anywhere.

Bottom line: If your work takes you in to tight spaces and you need the absolute best performance at the lowest cost per unit of work that you can possibly get from a 14-ton excavator, take along a Cat 314F. You will be glad you did.

Contents

Hydraulics	4
Engine	6
Compact Radius	7
Operator Station.....	8
Integrated Technologies.....	9
Front Linkage	10
Structures & Undercarriage	11
Attachments.....	12
Serviceability.....	14
Safety	15
Complete Customer Care.....	16
Sustainability	17
Specifications.....	18
Standard Equipment.....	26
Optional Equipment.....	27





Key Performance Stats & Facts

Standard Specifications

0.52 m³ bucket
2.5 m stick

Maximum Bucket Size

0.63 m³

Maximum Reach

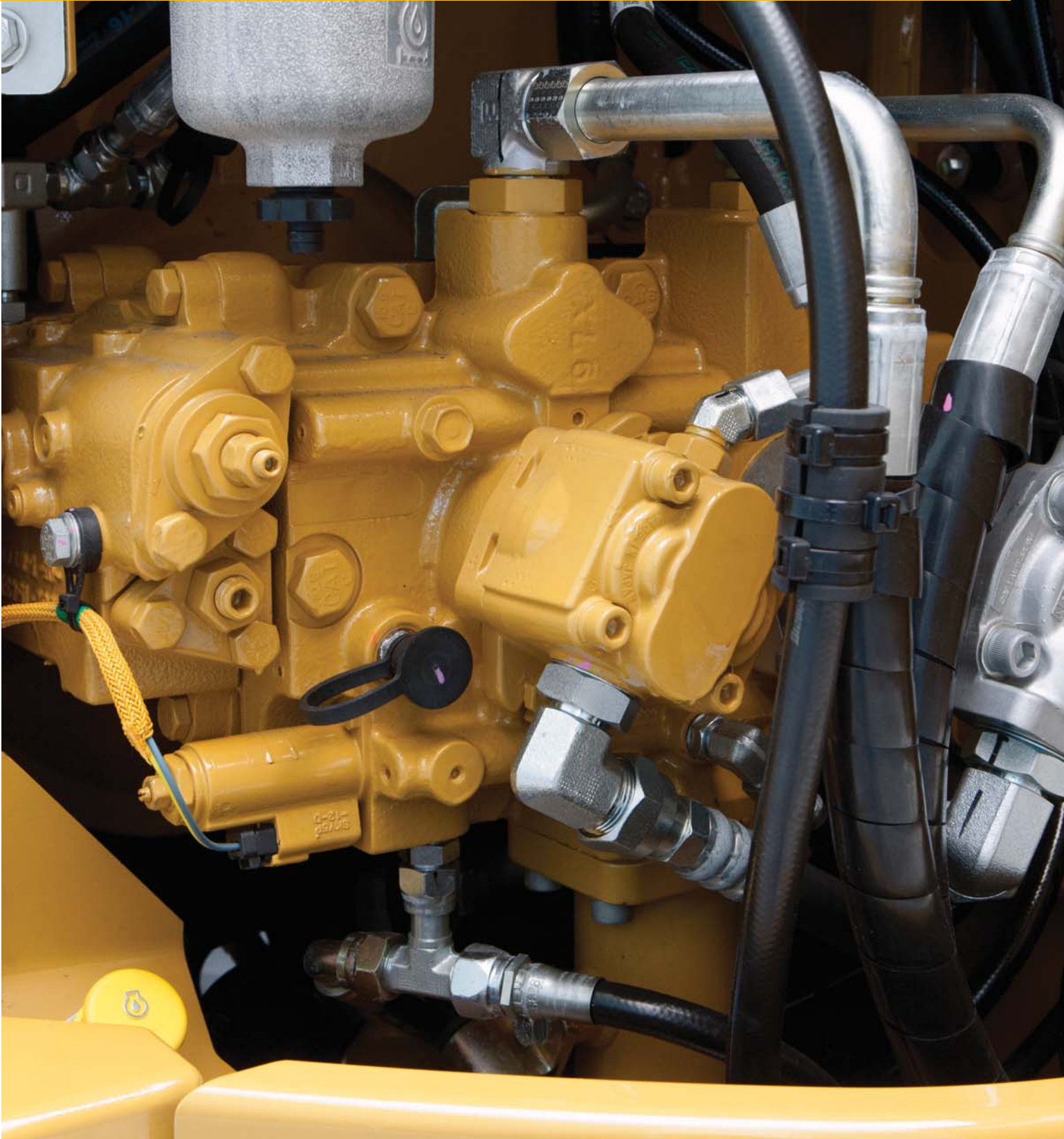
8800 mm

Maximum Dig Depth

5940 mm

Hydraulics

You can move dirt, rock, and debris with speed, precision, and efficiency





A Forceful, Responsive Design

The 314F features a negative flow control hydraulic system that gives you the feel and response of an open center valve system with the efficiency of a closed center valve system. In layman's terms, negative flow control decreases pump flow when oil pressure in the center bypass increases and vice versa. The net result is the pump and valve operate in harmony with less energy and less wear and tear.

A Logical Layout

All major hydraulic components are strategically located close together. This positioning leads to reduced friction loss and pressure drops, and the result is more hydraulic horsepower for the heavy-lifting, ground-breaking work you need to get done.

Valves For Added Efficiency

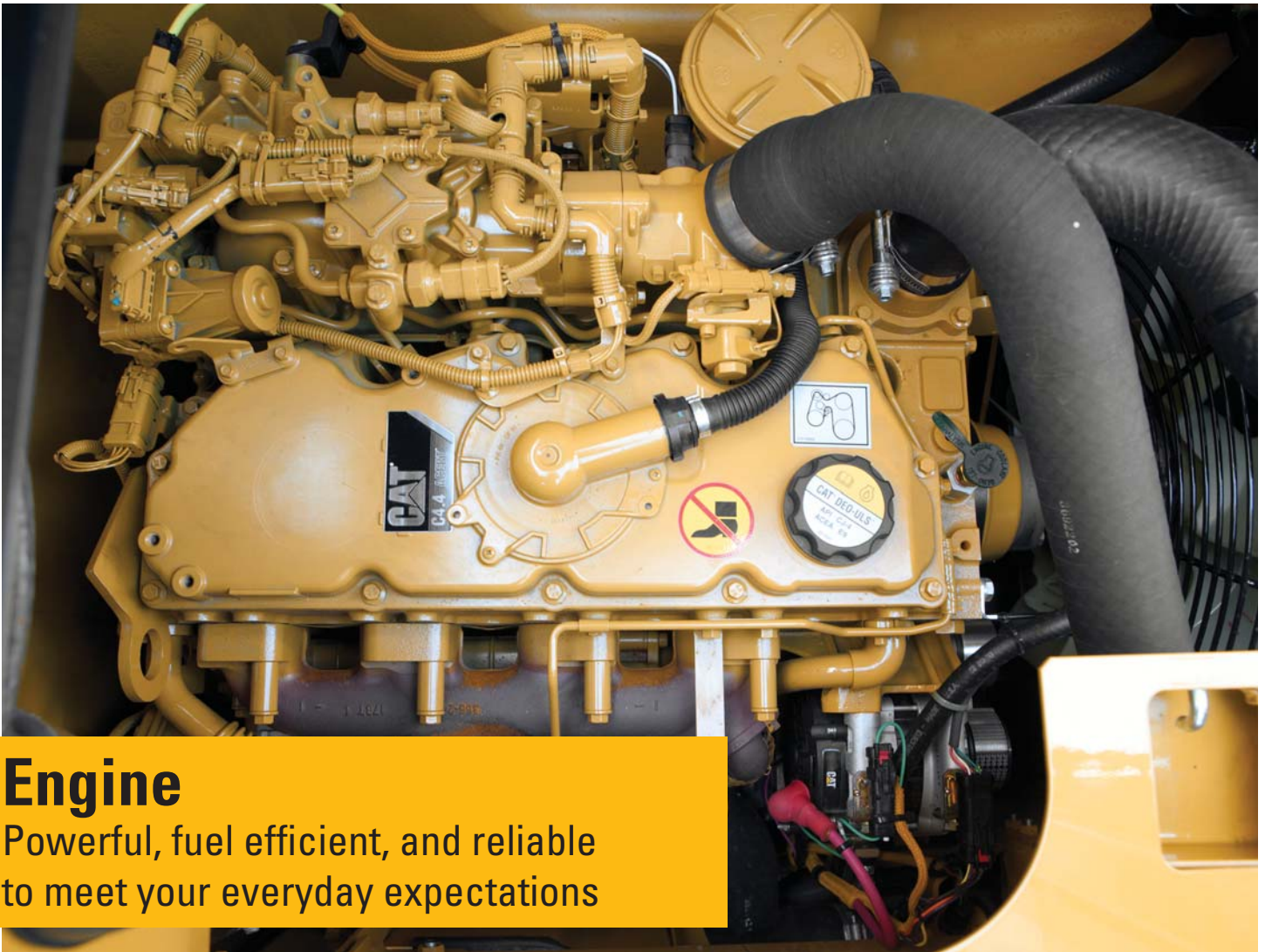
The 314F is built with a back-to-back main control valve, and the benefit to you is reduced pressure loss and fuel consumption due to the shorter distance oil has to travel. The machine also features special boom and stick valves that recirculate oil flow in the cylinders during work instead of going all the way back to the tank. The valves contribute to energy savings, but their primary benefit is allowing more oil to flow to other functions so you can experience faster cycle times and more production.

Filter For Added Protection & Performance

The capsule filter is designed to take out impurities and help you avoid system contamination and accidental spilling. The self-contained, maintenance-friendly filter is easy to remove with a simple wrench. It can take out impurities as small as beta 10 – particles so tiny you cannot see them with the eye. A sensor lets you know if there is a clog or if pressure exceeds a certain level so you can take action.

Drain Filter

A drain filter is one extra level of contamination prevention the 314F offers. Located in the pump compartment behind the pilot filter, the drain filter purifies the case drain from the main pumps, swing motor, and travel motors – all to enhance the life of the pumps and motors and uptime for you.



Engine

Powerful, fuel efficient, and reliable to meet your everyday expectations

Proven Technology

Every Japan 2014 (Tier 4 Final) ACERT engine is equipped with a combination of proven electronic, fuel, air, and aftertreatment components. Applying these time-tested technologies lets us meet your high expectations for productivity, fuel efficiency, reliability, and service life.

Following are the results you can expect:

- High performance across a variety of applications.
- Enhanced reliability through commonality and simplicity of design.
- Maximized uptime and reduced cost with world-class Cat dealer support.
- Minimized impact on emission systems – with no operator interaction required.
- Durability with long service life.
- Same great power and response.

Compact Radius

Sized right for tight quarters work



Work With Confidence

The 314F's compact radius design makes it ideal for working confidently in space-restricted areas like road jobs with lane closures and next to buildings or other structures you'd like to keep from harm's way. With a front swing radius of 2.02 m* and a tail swing radius of 1490 mm, the machine can dig, swing, and dump within a working space of 3.5 m. When rotated 90 degrees and working over the side, just 245 mm** of counterweight extends beyond the track width, which allows trucks and jersey barriers to be positioned closer to the machine.

Work With Power

Unlike a standard radius machine, the 314F's boom is positioned toward the center of the machine. Not only does this help reduce the front swing radius, but it also supports more lift capacity over the front due to greater stability.

Work With Comfort

The machine features a full-size ROPS-certified cab. With low sound levels, high visibility, convenient access to switches and controls, and a fully adjustable seat, you will find it comfortable to work in all day long.

*with 2.5 m stick

**with 500 mm TG shoes

Operator Station

Your operators will enjoy the incredibly quiet and comfortable cab



A Safe, Quiet Cab

The Roll-Over Protective Structure (ROPS) cab provides you with a safe working environment. It also contributes to your comfort because it's attached to a reinforced frame with special viscous mounts that limit vibration and unnecessary sound. Add in special roof lining and sealing and you have a cab that's as quiet inside as today's top pickup trucks.

Comfortable Seat

The seat is a mechanical suspension type with heat. It features a reclining back, upper and lower slide adjustments, and height and tilt angle adjustments to meet your needs for maximum comfort.

A Cool & Warm Environment

The automatic climate control system features multiple air outlets with filtered ventilation. Air flows on the floor, behind the seat, and in front of you to make your work in either hot or cold weather much more pleasant and productive.

Controls Just For You

The joystick consoles adjust to improve your comfort and productivity during the course of a day. The armrests telescope up and down just like a bicycle seat. Joysticks for tool control have buttons to make working with a two-way-flow grapple, thumb, and shear simple. The right joystick features a button that will reduce engine speed when you are not working to help save fuel. Touch it once and speed reduces; touch it again and speed increases for normal operation.

A Helpful Monitor

The LCD monitor is easy to see and navigate. Programmable in up to 42 languages to meet today's diverse workforce, the monitor clearly displays critical information you need to operate efficiently and effectively. Plus it projects the image from the standard rearview camera to help you see what's going on around you so you can stay safely focused on the job at hand.

Ample Storage & Auxiliary Power

Storage spaces are located in the front, rear, and side consoles of the cab. A drink holder accommodates a large mug, and a shelf behind the seat stores large lunch or toolboxes. Two 12-volt power supply sockets are conveniently located near the key storage areas for charging your electronic devices like an MP3 player, a cell phone, or a tablet.



Integrated Technologies

Monitor, manage, and enhance your job site operations



Cat Connect

The smart use of technology and services will improve your job site efficiency. In fact, using data from technology-equipped machines give you more information and insight into your equipment and operations than ever before.

Cat Connect technologies offer improvements in these key areas:

- **GRADE Technologies**

GRADE technologies like Cat Grade Control Depth and Slope combine digital design data and in-cab guidance to help you work more productively and accurately with less rework. Real-time bucket tip positioning and cut and fill data on the standard cab monitor guide you to grade, saving money on fuel and materials.

- **LINK Technologies**

LINK technologies like Product Link™ wirelessly connect you to your equipment, giving you valuable insight into how your machine or fleet is performing. The system tracks location, hours, fuel usage, productivity, idle time, and diagnostic codes through the online VisionLink® interface so you can make timely, fact-based decisions to maximize efficiency, improve productivity, and lower operating costs.



Front Linkage

Options to take on your far-reaching and up-close tasks

Link & Pins

The power link between the stick and bucket is designed for heavy-duty lifting over the long haul. With an integrated lifting eye, the power link of shovel crane helps enhance lifting capability by lowering your load point and maximizing the power built into the boom cylinders. All pins used in the front linkage have thick chrome plating to give them high wear and corrosion resistance. The large pins distribute load weight to ensure long pin, boom, and stick life.

Booms

Two types of booms are available to meet a variety of tasks. A reach boom offers you excellent all-around versatility and a large working envelope; a power offset boom allows you to stay in the same position to load and dump, which increases productivity when your team is working in narrow, restricted space. A unique bucket-to-cab avoidance feature is also included to ensure safe operation.

Sticks

The R3.0 m stick is the best when you need deep trenching, longer reach, and top truck loading capabilities. The R2.5 m stick provides greater breakout force and increases productivity when you primarily plan on using hydro-mechanical work tools. The 2.13 m stick combines with the power offset boom to deliver excellent breakout force and cycle speed in those tough-to-reach places.

Built To Last

Each boom and stick is built with internal baffle plates for additional durability, and each undergoes ultrasound inspection to ensure quality and reliability. Large box-section structures with thick, multi-plate fabrications, castings, and forgings are used in high-stress areas such as the boom nose, boom foot, and boom and stick cylinders to enhance durability for the tough work you do. Your Cat dealer can help you pick the best combination for your business.

Structures & Undercarriage

You can take on a variety of tough tasks with this built-to-last machine



The 314F is a well-built machine designed to give you a very long service life. The upper frame has mountings made specifically to support the heavy-duty cab; it's also reinforced around key areas that take on stress like the boom foot and skirt. Massive bolts are used to attach the track frames to the body, and additional bolts are used throughout to increase the machine's digging force, which leads to more productivity for you.



Durable Undercarriage

The 314F undercarriage contributes significantly to its outstanding stability and durability. Track shoes, links, rollers, idlers, and final drives are all built with long-lasting, high-tensile-strength steel. Cat Grease Lubricated Track 2 (GLT2) track link protects moving parts by keeping water, debris, and dust out and grease sealed in, which delivers longer wear life and reduced noise when traveling.



Great Weight

The 314F has one counterweight option. Rounded to minimize the amount of overhang, the 2.19 t weight is mounted directly to the main frame using massive bolts to ensure maximum rigidity. Plus it has an integrated housing to help protect the machine's standard rearview camera.

Attachments

Tools to make you productive and profitable



Get The Most Out Of One Machine

You can easily expand the performance of your machine by utilizing any of the variety of attachments offered by Cat Work Tools.

Change Jobs Quickly

A quick coupler brings the ability to quickly change attachments and switch from job to job. The Cat Pin Grabber coupler is the secure way to decrease downtime and increase job site flexibility and overall productivity.

Dig, Finish & Compact

A wide range of buckets dig everything from top soil to harsh, abrasive material. For finishing and grading work, compact and shallow ditch cleaning buckets fit the need. A Cat compactor prepares the area for the next phase of construction.

Break, Demolish & Scrap

A hydraulic hammer equips your machine for breaking rock in quarries, preparing trenches on construction sites, or taking down bridge pillars and reinforced concrete on road jobs. Shears take your machine into demolition jobs and help you process the debris for reuse and recycle.

Move & Handle

Add a thumb and you have the ability to move and handle brush, rocks, and debris. For constant material handling, a grapple is your solution.

Set Up Your Machine For Profitability

Your Cat dealer can install hydraulic kits to properly operate all Cat Work Tool attachments – maximizing the machine's uptime and your profits. All Cat Work Tool attachments are supported by the same Cat dealer network as your Cat machine

GRAB, SORT, LOAD



Pro Series Hydraulic Thumbs



Stiff Link Thumbs



Demolition & Sorting Grapple

DIG & PACK



Ditch Cleaning Tilt Bucket



General Duty Buckets



Heavy Duty Skeleton Bucket



Tamping Bucket



Vibratory Plate Compactors

SWAP TOOLS



Pin Grabber Coupler

CUT, CRUSH, BREAK & RIP



Scrap & Demolition Shears



Hydraulic Hammers

Serviceability

Designed to make your maintenance quick and easy

On-Board Monitoring

The 314F has a pre-start monitoring system that allows you to check coolant, hydraulic oil, and engine oil levels right inside the cab. The monitor also tells you fluid and filter change intervals to ensure you keep the machine in top-performing condition.

Safe, Convenient Access

You can see the service hour meter inside the cab and reach most routine maintenance items like fluid taps and grease points from the safety and convenience of ground level. Filters are banked together for higher service efficiency. Compartments feature wide service doors and heavy-duty hardware to keep them open – all to make service work simpler and more secure.

A Fresh Idea

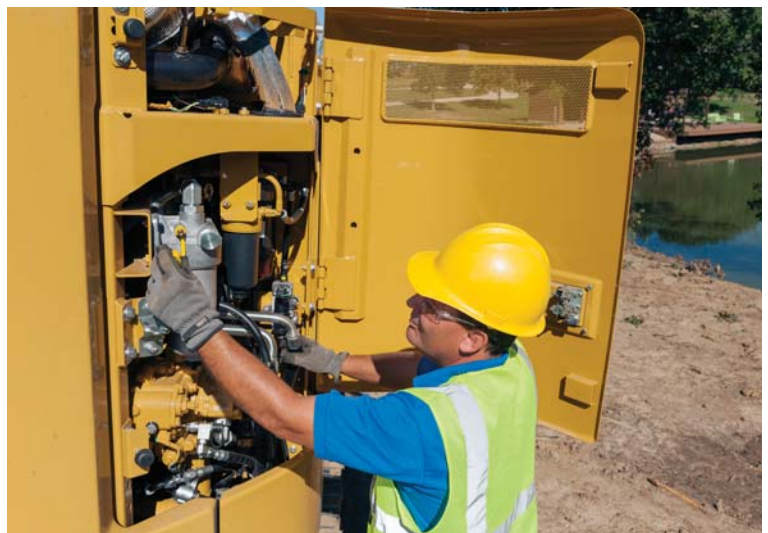
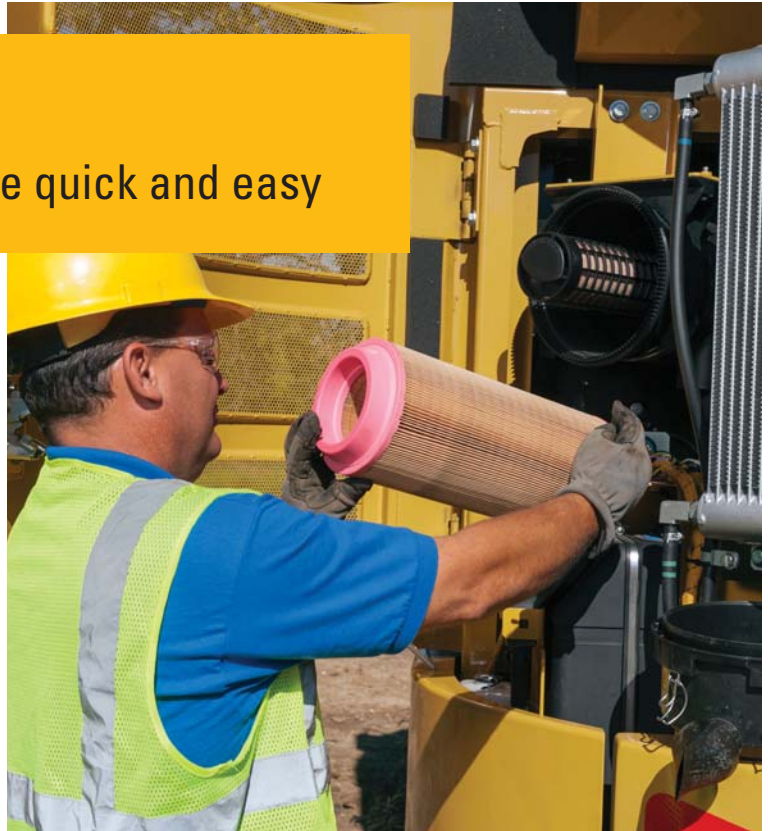
The fresh air filter is conveniently located on the side of the cab to make it easy for you to reach and replace. It's protected by a lockable door that can only be opened with the engine key.

A Priming Solution

Located in the pump compartment, an electric fuel priming pump eliminates the need for you to manually prime after filter changes. It also eliminates the risk of fuel contamination by preventing unfiltered fuel from being backfilled during filter changes.

More Service Benefits

Drain lines beneath the machine make it easy and simple for you to remove water and sediment during routine maintenance. They also make it easy to change oil without special tools or the risk of spilling. Same goes for an integrated fuel level indicator that pops up to help you reduce the possibility of fuel tank overfilling.



Safety

Features to help protect you day in and day out



A Safe, Quiet Cab

The roll-over protective structure (ROPS) cab provides you with a safe working environment when properly seated and belted. It also contributes to your comfort because it's attached to a reinforced frame with special viscous mounts that limit vibration and unnecessary sound, and it includes special roof lining and sealing to make it as quiet as any of today's top pickup trucks.

Secure Contact Points

Multiple large steps get you into the cab as well as a leg up to the compartments. Extended hand rails allow you to safely climb to the upper deck and removable anti-skid plates. Anti-skid plates reduce your slipping hazards in all types of weather conditions.

Great Views

Ample glass gives you excellent visibility out front and to the side, and the standard rearview camera gives you a clear field of view behind the machine through the cab monitor. The available split-configuration windshield features an upper window with handles that make it easy to slide and store above you and a lower window that can be removed and stored on the inside wall of the cab. The large skylight serves as an emergency exit and provides you with enhanced visibility.

Smart Lighting

Halogen lights provide plenty of illumination, and the cab and boom lights can be programmed to stay on for up to 90 seconds after the engine's been turned off to help you safely exit the machine.

Guard Options

The 314F can be equipped with several guarding options. Following are just a few:

- Falling Object Guarding System (FOGS)
- Full-length wire mesh
- Heavy-duty bottom guards

Complete Customer Care

Support you can count on



Expert Advice You Can Trust

What are the job requirements and machine attachments? What production is needed? Your Cat dealer can provide recommendations to help you make the right machine choices.

Support Agreements To Fit Your Needs

Cat dealers offer a variety of customer support agreements and work with you to develop a plan to meet your specific needs. These plans can cover the entire machine, including attachments, to help protect your investment.

Parts When & Where You Need Them

Cat dealers utilize a worldwide parts network to maximize your machines' uptime. Plus they can help you save money with Cat remanufactured components.

Operating Techniques To Boost Your Profits

Improving operating techniques can boost your profits. Your Cat dealer has videos, literature, and other ideas to help you increase productivity. Caterpillar also offers simulators and certified operator training to help maximize the return on your investment.

Financial Options Just For You

Consider financing options and day-to-day operating costs. Look at dealer services that can be included in the machine's cost to yield lower owning and operating costs over time.

What's Best For You Today...& Tomorrow

Repair, rebuild, or replace? Your Cat dealer can help you evaluate the cost involved so you can make the best choice for your business.



Sustainability

Generations ahead in every way

- The C4.4 ACERT engine meets Japan 2014 (Tier 4 Final) emission standards.
- The 314F has the flexibility of running on either ultra-low-sulfur diesel (ULSD) fuel with 15 ppm of sulfur.
- An overfill indicator rises when the fuel tank is full to help your service technicians avoid spilling.
- An unique engine oil filter eliminates the need for painted metal cans and aluminum top plates. The cartridge-style spin-on housing enables the internal filter to be separated and replaced; the used internal element can be incinerated to help reduce waste.
- The machine is built to be rebuilt with major structures and components capable of being remanufactured to reduce waste and replacement costs.
- The 314F is an efficient, productive machine that reduces impact on natural resources for future generations.

314F Hydraulic Excavator Specifications

Engine

Engine Model	Cat C4.4 ACERT
Net Power – SAE J1349	72.3 kW
Engine Power – ISO 14396	74.4 kW
Bore	105 mm
Stroke	127 mm
Displacement	4.4 L

Weight

Minimum Operating Weight*	13 300 kg
Maximum Operating Weight**	15 200 kg

*4.65 m reach boom, 2.5 m stick, 500 mm shoes, no blade

**Power offset boom, 2.13 m stick, 700 mm shoes, blade

Hydraulic System

Main System – Maximum Flow (Total)	256 L/min
Maximum Pressure – Equipment	30 500 kPa
Maximum Pressure – Power Offset Boom (optional)	29 900 kPa
Maximum Pressure – Travel	35 000 kPa
Maximum Pressure – Swing	23 000 kPa
Pilot System – Maximum Flow	19 L/min
Pilot System – Maximum Pressure	4120 kPa
Boom Cylinder – Bore	110 mm
Boom Cylinder – Stroke	1000 mm
Stick Cylinder – Bore	120 mm
Stick Cylinder – Stroke	1197 mm
Bucket Cylinder – Bore	100 mm
Bucket Cylinder – Stroke	939 mm

Drive

Maximum Travel Speed	5.5 km/h
Maximum Drawbar Pull	113 kN

Swing Mechanism

Swing Speed	10.5 rpm
Swing Torque	30.9 kN·m

Service Refill Capacities

Fuel Tank Capacity	180 L
DEF Tank Capacity	20 L
Cooling System	22 L
Engine Oil (with filter)	13.5 L
Swing Drive (each)	2.4 L
Final Drive (each)	3 L
Hydraulic System (including tank)	160 L
Hydraulic Tank	84 L

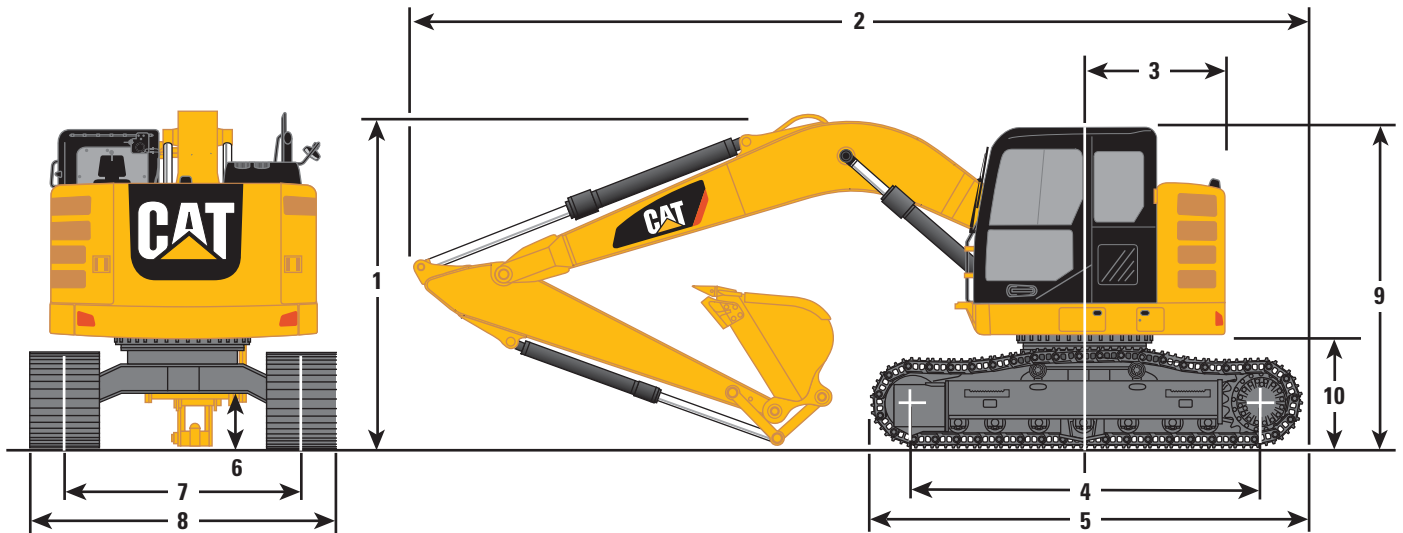
Track

Standard Undercarriage	
Number of Shoes (each side)	43 pieces
Number of Track Rollers (each side)	6 pieces
Number of Carrier Rollers (each side)	1 piece

314F Hydraulic Excavator Specifications

Dimensions

All dimensions are approximate.



Boom Type	Reach Boom 4.65 m		Power Offset Boom
	R3.0 m	R2.5 m	2.13 m
Stick Size	R3.0 m	R2.5 m	2.13 m
1 Shipping Height*	3000 mm	3000 mm	3000 mm
Shipping Height at Boom Top	2750 mm	3030 mm	2780 mm
Shipping Height with Hand Rail	3000 mm	2820 mm	3000 mm
Shipping Height with Top Guard	2950 mm	2950 mm	2950 mm
2 Shipping Length			
Standard Undercarriage	7330 mm	7320 mm	—
Standard Undercarriage with Blade	7950 mm	7490 mm	7530 mm
3 Tail Swing Radius			
Heavy Counterweight	1490 mm	1490 mm	1490 mm
4 Length to Center of Rollers	2780 mm	2780 mm	2780 mm
5 Track Length	3490 mm	3490 mm	3490 mm
6 Ground Clearance	440 mm	440 mm	440 mm
7 Track Gauge	1990 mm	1990 mm	1990 mm
8 Transport Width			
500 mm Shoes	2490 mm	2490 mm	2490 mm
600 mm Shoes	2590 mm	2590 mm	2590 mm
700 mm Shoes	2690 mm	2690 mm	2690 mm
9 Cab Height	2810 mm	2810 mm	2810 mm
Cab Height with Top Guard	2950 mm	2950 mm	2950 mm
10 Counterweight Clearance**	860 mm	860 mm	860 mm

*Including shoe lug height.

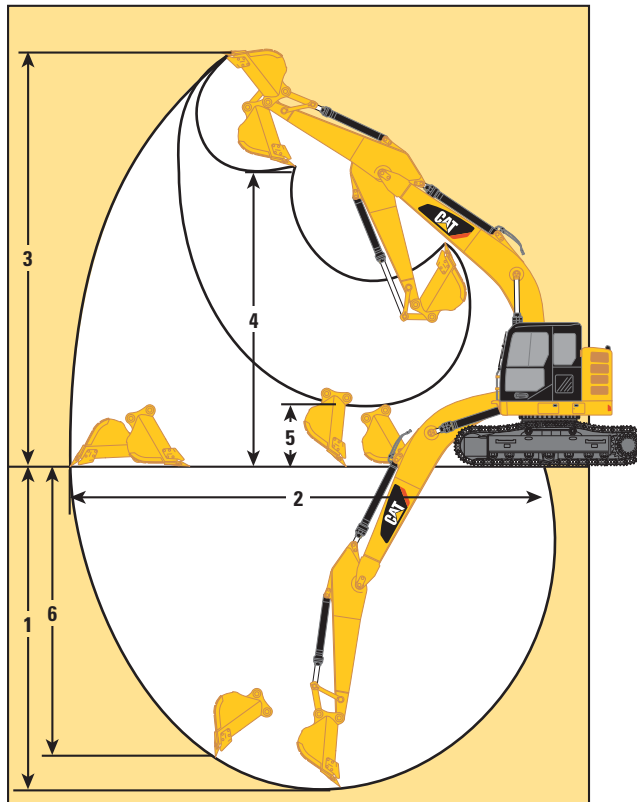
**Without shoe lug height.

All dimensions were calculated with 1000 mm wide GD bucket with 0.52 m³ capacity and 1200 mm tip radius.

314F Hydraulic Excavator Specifications

Working Ranges

All dimensions are approximate.



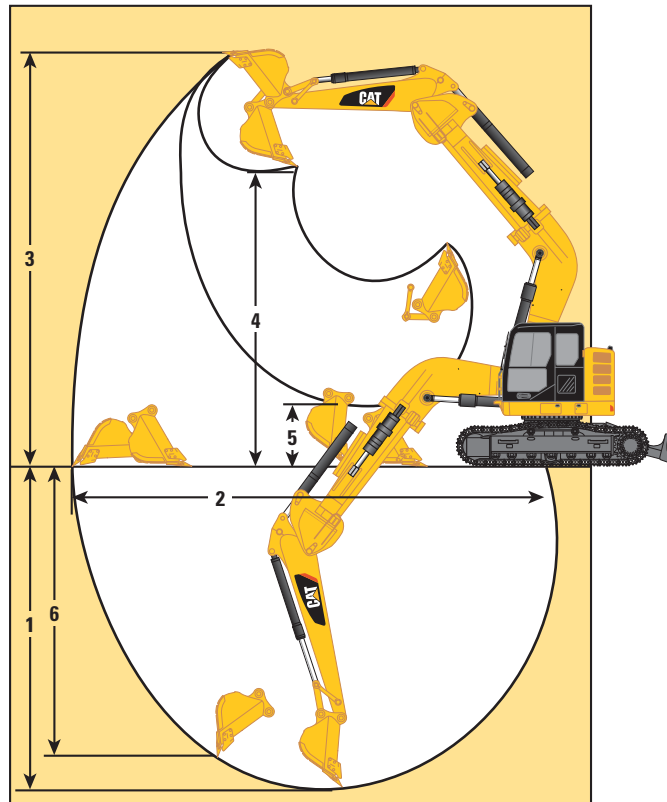
Boom Type	Reach Boom 4.65 m	
	R3.0 m	R2.5 m
Stick Size		
1 Maximum Digging Depth	5940 mm	5440 mm
2 Maximum Reach at Ground Level	8670 mm	8220 mm
3 Maximum Cutting Height	9630 mm	9300 mm
4 Maximum Loading Height	7200 mm	6870 mm
5 Minimum Loading Height	2060 mm	2510 mm
6 Maximum Vertical Wall Digging Depth	5340 mm	4910 mm

All dimensions were calculated with 1000 mm wide GD bucket with 0.52 m³ capacity.

314F Hydraulic Excavator Specifications

Working Ranges

All dimensions are approximate.



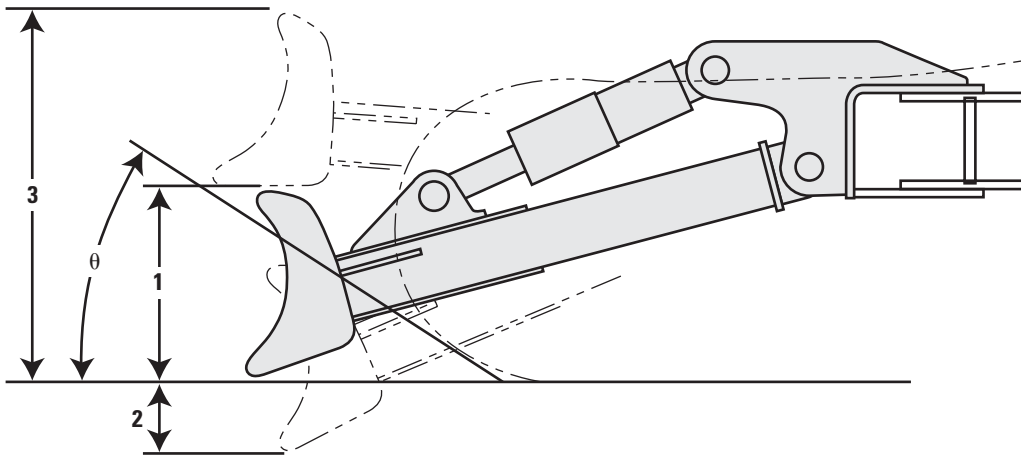
Boom Type	Power Offset Boom
Stick Size	2.13 m
1 Maximum Digging Depth	4840 mm
2 Maximum Reach at Ground Level	7270 mm
3 Maximum Cutting Height	8440 mm
4 Maximum Loading Height	6030 mm
5 Minimum Loading Height	2680 mm
6 Maximum Vertical Wall Digging Depth	3610 mm

All dimensions were calculated with 900 mm wide GD bucket with 0.45 m³ capacity and 1200 mm tip radius.

314F Hydraulic Excavator Specifications

Blade Working Ranges

All dimensions are approximate.



Blade Options	2500 mm	2600 mm	2700 mm
Recommended Track Shoe Width	500 mm	600 mm	700 mm
1 Blade Height	430 mm	430 mm	430 mm
2 Maximum Lowering Depth from Ground	570 mm	570 mm	570 mm
3 Maximum Raising Height above Ground	1000 mm	1000 mm	1000 mm
θ Approach Angle	24.9 degrees	24.9 degrees	24.9 degrees

314F Hydraulic Excavator Specifications

Major Component Weights

Base Machine	5000 kg
Standard Undercarriage	2490 kg
Counterweight – 2.19 t	2190 kg
Boom (includes lines, pins and stick cylinder)	
Reach Boom – 4.65 m	1140 kg
Power Offset Boom	1790 kg
Reach Boom for CGC – 4.65 m	1030 kg
Stick (includes lines, pins, bucket cylinder and bucket linkage)	
R3.0 m	670 kg
2.13 m for Power Offset Boom	520 kg
R2.5 m for CGC	590 kg
Track Shoe (Long/per two tracks)	
500 mm Triple Grouser	1470 kg
600 mm Triple Grouser	1700 kg
700 mm Triple Grouser	1950 kg
Blade	
2500 mm	830 kg
2600 mm	830 kg
2700 mm	840 kg

All weights are rounded up to nearest 10 kg.

Base machine includes 75 kg operator weight, 90% fuel weight, and undercarriage with center guard.

314F Hydraulic Excavator Specifications

Operating Weight and Ground Pressure

	700 mm Triple Grouser Shoes		600 mm Triple Grouser Shoes		500 mm Triple Grouser Shoes	
	kg	kPa	kg	kPa	kg	kPa
Standard Undercarriage without Blade						
Reach Boom – 4.65 m						
R3.0 m	13 800	34.8	13 600	40.0	13 400	47.3
R2.5 m	13 800	34.8	13 500	39.7	13 300	46.9
Standard Undercarriage with Blade						
Reach Boom – 4.65 m						
R3.0 m	14 700	37.0	14 400	42.3	14 200	50.1
R2.5 m	14 600	36.8	14 300	42.0	14 100	49.8
Power Offset Boom						
2.13 m	15 200	38.3	15 000	44.1	14 700	51.9

Bucket and Stick Forces

Boom Type	Reach Boom 4.65 m		Power Offset Boom
	R3.0 m	R2.5 m	2.13 m
General Duty			
Bucket Digging Force (SAE)	96 kN	96 kN	88 kN
Stick Digging Force (SAE)	59 kN	66 kN	63 kN

Caterpillar recommends using appropriate work tools to maximize the value customers receive from our products. Use of work tools, including buckets, which are outside of Caterpillar's recommendations or specifications for weight, dimensions, flows, pressures, etc. may result in less-than-optimal performance, including but not limited to reductions in production, stability, reliability, and component durability. Improper use of a work tool resulting in sweeping, prying, twisting and/or catching of heavy loads will reduce the life of the boom and stick.

314F Hydraulic Excavator Specifications

Work Tool Offering Guide*

Boom Type	Reach Boom	
Stick Size	R3.0 m	R2.5 m
Hydraulic Hammer	H110Es H115Es	H110Es H115Es
Mobile Scrap and Demolition Shear	S320B**	S320B**
Compactor (Vibratory Plate)	CVP75	CVP75
Thumbs	These work tools are available for the 314F. Consult your Cat dealer for proper match.	
Cat Pin Grabber Coupler		

*Matches are dependent on excavator configurations. Consult your Cat dealer for proper work tool match.

**Boom Mount.

314F Standard Equipment

Standard Equipment

Standard equipment may vary. Consult your Cat dealer for details.

CAB

- Pressurized operator station with positive filtration
- Sliding upper door window (left-hand cab door)
- Removable lower windshield with in cab storage bracket
- Coat hook
- Beverage holder
- Literature holder
- AM/FM radio
- Radio with MP3 auxiliary audio port
- Two stereo speakers
- Storage shelf suitable for lunch or toolbox
- Color LCD display with indicators, filter/fluid change, and working hour information
- Adjustable armrest
- Height adjustable joystick consoles
- Neutral lever (lock out) for all controls
- Travel control pedals with removable hand levers
- Capability of installing additional pedal
- Power outlets, 5 amp
- Travel alarm
- Laminated glass front upper window and tempered other windows

ELECTRICAL

- 80 amp alternator
- Circuit breaker
- Capability to electrically connect a beacon

ENGINE

- C4.4 ACERT diesel engine
- Meets Japan 2014 (Tier 4 Final) emission standards
- 2300 m altitude capability
- Electric priming pump
- Automatic engine speed control
- Economy and standard modes
- Two-speed travel
- Side-by-side cooling system
- Radial seal air filter
- Primary filter with water separator and water separator indicator
- Secondary filter
- Screen filter in fuel line
- Variable speed fan with viscous clutch

HYDRAULIC SYSTEM

- Boom drift reduction valve
- Regeneration circuit for boom and stick
- Reverse swing dampening valve
- Automatic swing parking brake
- High-performance hydraulic return filter
- Control pattern quick-changer, four way

LIGHTS

- Halogen boom light (left side)
- Time delay function for boom light and cab light
- Exterior light

UNDERCARRIAGE

- Grease Lubricated Track GLT2, resin seal
- Towing eye on base frame

SECURITY

- Cat one key security system
- Door locks
- Cap locks on fuel and hydraulic tanks
- Lockable external tool/storage box
- Signaling/warning horn
- Secondary engine shutoff switch
- Rear window for emergency exit
- Guard, travel motor protection
- Rearview camera
- Security system fitted (MSS)

TECHNOLOGY

- Product Link

Optional Equipment

Optional equipment may vary. Consult your Cat dealer for details.

CAB

- Seat, high-back mechanical suspension
- Right pedal
- Cab mirror
- Ashtray

COUNTERWEIGHT

- 2.19 t without lifting eye

ELECTRICAL

- Cold weather battery –25° C
- Jump start receptacle

FRONT LINKAGE

- Quick coupler
- Bucket linkage
- 4.65 m Reach Boom
- Power Offset Boom
- 2.13 m stick for Power Offset Boom
- 2.5 m stick
- 3.0 m stick

HYDRAULIC SYSTEM

- Auxiliary hydraulics
- Boom and stick lines
- High-pressure line
- Medium-pressure line
- Quick coupler line
- Boom lowering and stick lowering control device

LIGHTS

- Working light, cab mounted with time delay
- Halogen boom lights (right side)

UNDERCARRIAGE

- 500 mm triple grouser shoes
- 600 mm triple grouser shoes
- 700 mm triple grouser shoes
- 2500 mm blade with replaceable cutting edge
- 2600 mm blade with replaceable cutting edge
- 2700 mm blade with replaceable cutting edge
- Swivel guard

SECURITY

- FOGS, bolt-on
- Guard, cab front, mesh
- Bottom guards, heavy duty

TECHNOLOGY

- Cat Grade Control Depth and Slope

For more complete information on Cat products, dealer services, and industry solutions, visit us on the web at www.cat.com

AEHQ8071
(Japan)

© 2017 Caterpillar
All rights reserved

Materials and specifications are subject to change without notice. Featured machines in photos may include additional equipment. See your Cat dealer for available options.

CAT, CATERPILLAR, SAFETY.CAT.COM, their respective logos, "Caterpillar Yellow" and the "Power Edge" trade dress, as well as corporate and product identity used herein, are trademarks of Caterpillar and may not be used without permission.

VisionLink is a trademark of Trimble Navigation Limited, registered in the United States and in other countries.

Based on the Labor, Safety and Health Laws in Japan, employer of small construction equipment are required to provide specific training for all operators on machines with ship weight less than 3 metric ton. For machines greater than 3 metric ton, operator needs to obtain operator license certification from a Government approved registered training school.

