

## CONSTRUCTION & PAVING ATTACHMENTS

**MAKE THE MOST OUT OF YOUR MACHINE.**

Cat® Skid Steer Loaders, Multi Terrain Loaders, Compact Track Loaders, Compact Wheel Loaders, Backhoe Loaders, Small Wheel Loaders, Mini Excavators and Telehandlers

**BUILT FOR IT.™**

**For more information, visit  
[Cat.com/attachments](http://Cat.com/attachments) or  
contact your local Cat dealer.**

**BUILT FOR IT.™**



AEXQ2314-01 Construction and Paving Attachments\_EAME June 2017

© 2017 Caterpillar. All Rights Reserved. CAT, CATERPILLAR, BUILT FOR IT, their respective logos, "Caterpillar Yellow," the "Power Edge" trade dress, as well as corporate and product identity used herein, are trademarks of Caterpillar and may not be used without permission.



# TOUGH WORK DEMANDS VERSATILITY.

Attachments to tackle every task on your site.

Cat® machines are built with you in mind – helping you reduce owning and operating costs across various tasks. That's why we offer an extensive portfolio of attachment solutions that provide versatility, so you can achieve more with leaner crews and keep jobs on time and within budget. Browse our lineup and find the tools you need to get work done faster than ever before.





# ANGLE AND DOZER BLADES

Grade and prep ground regardless of gravel or soil type. Our angle and dozer blades are designed to deliver maximum moving power and can be easily adjusted while working.



## Specifications

Part Number	Attachment Models	Compatibility	Angled Width		Coupler Interface	
			mm	(in)	kg	(lb)
Angle	1829 mm (72 in)	CTL, CWL, MTL, SSL	1685	(66)	313	(690)
Angle	2134 mm (84 in)	CTL, CWL, MTL, SSL	1949	(78)	311	(730)
Dozer	2002 mm (79 in)	CTL, CWL, MTL, SSL	1750	(69)	491	(1082)
Dozer	2342 mm (92 in)	CTL, CWL, MTL, SSL	2049	(81)	528	(1164)
CTL: Compact Track Loader		SSL: Skid Steer Loader				
CWL: Compact Wheel Loader						
MTL: Multi Terrain Loader						

### LONG-LASTING MATERIALS

Pins and hardware are plated for corrosion protection.



### EASILY ADJUSTS

Changes to blade pitch and angle can be made from inside the cab.



### ADVANCED MOLDBOARD

With a curved moldboard, our blades can maneuver close to any barrier at any angle.

### WINTER WEATHER READY

Optional snow kit with heavy-duty guard assembly allows the blade to work year round.

# ANGLE BROOMS

Our angle brooms are designed to carefully remove snow — brushing surfaces rather than scraping. Select from hydraulic and manual angling models.



## Specifications

Attachment Models	Compatibility	Sweeping Width		Brush Diameter		Coupler Interface
		mm	(in)	mm	(in)	
BA118C	CTL, CWL, MTL, SSL	2119	(83)	815	(32)	SSL
BA22	CWL	2200	(87)	700	(27.5)	IT
BA25	BHL, CWL, SWL	2500	(98)	700	(27.5)	IT/Fusion™
BA30	SWL	2997	(118)	915	(36)	IT/Fusion™
BHL: Backhoe Loader		IT: Integrated Tool Carrier		SWL: Small Wheel Loader		
CTL: Compact Track Loader		MTL: Multi Terrain Loader				
CWL: Compact Wheel Loader		SSL: Skid Steer Loader				

### ADDED PROTECTION

Hood helps direct snow and debris away from the machine.



### GREATER DURABILITY

Bristles are a combination of polypropylene and wire for greater durability and an extended broom life.

### SIMPLE STORAGE

Four heavy-duty skid type stands make it easy to store the broom apart from the machine without damaging the bristles.

### MORE MOTION

Our brooms can sweep straight or rotate 30 degrees to the left or right.

### SUPERIOR SUSPENSION

Unique suspension system eliminates the need for support wheels and ensures the bristles maintain a constant ground pressure.

# COLD PLANERS

Our cold planers are made to smooth imperfections and remove deteriorated pavement or paint where dedicated planers can't. A hydraulic side-shift feature allows for planing close to curbs, walls and other obstructions. And our self-leveling technology ensures consistent ground contact.

## Specifications

Attachment Models	Machine Models	Drum Width		Number of Bits (Conical)
		mm	(in)	
PC104B	CTL, MTL, SSL	350	(14)	42
PC205B*	CTL, MTL, SSL	450	(18)	48
PC305B**	CTL, MTL, SSL	450	(18)	48
PC306B**	CTL, MTL, SSL	600	(24)	60
PC306B XD	CTL, MTL, SSL	600	(24)	48
PC310B***	CTL, MTL, SSL	1000	(40)	78
PC310B XD	CTL, MTL, SSL	1000	(40)	66
PC404	BHL	450	(18)	48
PC408B	CTL, MTL, SSL	750	(30)	60
PC412B	CTL, MTL, SSL	1200	(47)	90

\*Requires high flow option on machine. Operates in standard flow on high flow XPS or XHP machines.

\*\*Requires high flow or high flow XPS option on machine. Operates in high flow XPS on XHP machines.

\*\*\*Requires high flow XPS option on machine. Operates in high flow XPS on XHP machines.

BHL: Backhoe Loader

SSL: Skid Steer Loader

CTL: Compact Track Loader

MTL: Multi Terrain Loader

### HIGH SPEED DRUM AND CONICAL BITS

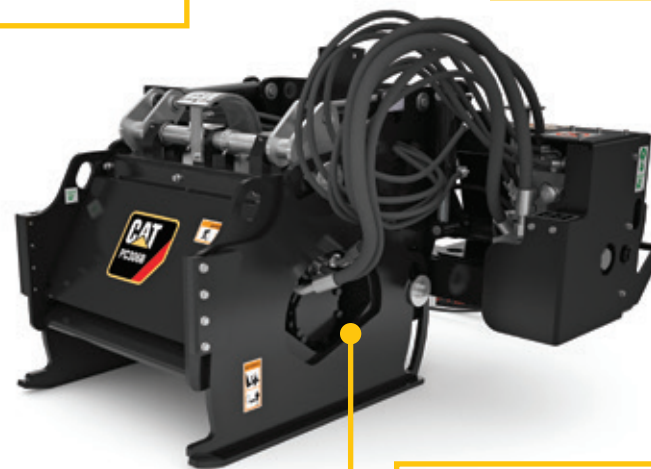
Select from multi-purpose, asphalt, concrete and heavy duty bits, which efficiently remove material and maximize wear life.

### MAX-PRO GAUGE

Color-coded gauge indicates when cold planer is running at optimal load for maximum productivity.

### INDICATORS

Large gauges display current position of independent skid shoe depth.



### INDEPENDENT SKID SHOES

Independently controls left and right sides to place shoe on curb and cut surface.

### HYDRAULIC SIDE SHIFT

Allows planning close to curbs.

### SELF-LEVELING TECHNOLOGY

Self-leveling shoes match the ground, despite coupler position, for easier operation.

# FORKS

Our pallet forks were specifically designed to transport palletized items in less time. Our utility forks are ideal for pierceable materials like debris and other waste. Optional grapples improve material retention so work is always neat and always efficient.



## Specifications

Attachment Models	Machine Models	Tine Length		Fork Tine Width	
		mm	(in)	mm	(in)
Pallet	All below	910-1220	(36-48)	100	(4)
		Width		Exposed Fork Tine Length	
		mm	(in)	mm	(in)
Utility	CTL, MTL, SSL	1676/1829	(66/72)	627	(24.7)
Utility Grapple	CTL, MTL, SSL	1676/1829	(66/72)	627	(24.7)
Industrial Grapple	CTL, MTL, SSL	1676/1829	(66/72)	559	(22)
Foldover	BHL	1067	(42)	80	(32)
Construction	SWL	1524/1829	(60/72)	2489	(98)
BHL: Backhoe Loader		MTL: Multi Terrain Loader			
CTL: Compact Track Loader		SSL: Skid Steer Loader			
CWL: Compact Wheel Loader		SWL: Small Wheel Loader			

### MORE OPTIONS

Multiple tine lengths available to match the job at hand.



### BETTER VIEW

Excellent load visibility makes it easier to pick up and place pallets.



### EASILY ADJUSTS

Notched rail-type carriage design on skid steer loaders, compact track loaders and multi terrain loaders means fork tines can be easily re-spaced or changed, and locked into place.

### ADDED VERSATILITY

Off-center cutout on backhoe loader and small wheel loader models allows for quick, easy fork changes.



# GENERAL PURPOSE BUCKETS

Our general purpose buckets are ideal for digging in low-impact, moderately abrasive materials such as dirt, loam, gravel and clay. Our buckets maximize capacity, loading, unloading and are designed using the highest quality materials for a long useful life. Select from a range of bucket sizes and teeth.



## Specifications

Attachment Models	Compatibility	Width Range		Capacity Range	
		mm	(in)	m³	(yd³)
General Purpose	BHL	2262-2434	(89-96)	0.76-1.5	(1.0-2.0)
General Purpose	CTL, MTL, SSL	1524-2134	(60-84)	0.36-0.63	(0.47-0.82)
General Purpose	CWL	1880-2413	(74-95)	0.76-1.38	(1.0-1.80)
General Purpose	TH	1854-2445	(73-96)	0.76-1.0	(1.0-1.3)
General Purpose Performance Series	SWL	2550-2750	(100-108)	1.9-2.9	(2.5-3.8)

BHL: Backhoe Loader  
CTL: Compact Track Loader  
CWL: Compact Wheel Loader

MTL: Multi Terrain Loader  
SSL: Skid Steer Loader  
SWL: Small Wheel Loader

TH: Telehandler

### INTEGRATED BUCKET STOPS

Protects machine from over center dumping.



### MULTIPLE INTERFACES AVAILABLE

Brackets allow quick, easy engage and disengage of the machine quick coupler.



### HIGH STRENGTH MATERIALS

Incorporated into overall design for optimal wear life.



### OPTIONAL BOLT-ON CUTTING EDGE, TEETH AND SEGMENTS

Provides peak support to base edge for added durability and performance.

# HAMMERS

Our hammers were designed for crushing impacts, reducing rock and concrete materials quickly and efficiently. Each hammer features an automatic shut-off and buffering system to reduce machine vibrations. Additionally, fully enclosed silenced hammers are available to suppress ambient noise.

## Specifications

Attachment Models	Machine Models	Operating Weight**		Blow Rate	Tool Diameter	
		kg	(lb)		mm	(in)
H25D	MHEX	70	(154)	1000-1900	36	(1.42)
H35E, H35Es	MHEX	125-130	(276-287)	600-1800	40	(1.57)
H45E, H45Es	MHEX	145-250	(320-551)	780-1800	50	(1.97)
H55E*/H55Es	BHL, CTL, MHEX, MTL, SSL, SWL	220-345	(485-761)	600-1680	58	(2.28)
H65E*/H65Es	BHL, CTL, MHEX, MTL, SSL, SWL	260-390	(573-860)	720-1740	68	(2.68)
H75Es	BHL, MHEX	500	(1013)	840-1650	74.5	(1.42)
H95Es	BHL, MHEX	730	(1610)	700-1260	87.5	(1.57)
H110Es	BHL, MHEX	1080	(2381)	450-1000	99.5	(1.97)

\*Flat top and pin-on models available

\*\*Includes hammers, standard tool and mounting bracket

BHL: Backhoe Loader  
CTL: Compact Track Loader  
MHEX: Mini Excavator

MTL: Multi Terrain Loader  
SSL: Skid Steer Loader  
SWL: Small Wheel Loader

### FULLY ENCLOSED HOUSING

Lowers overall noise level for quieter, safer job sites, especially in restricted zones such as hospital zones, residential areas and other noise-regulated areas. Also helps protect internal power cell and eliminates stress points.

### TRI-SUSPENSION SYSTEM

Available on silenced models to guide power cell, enable manageable, smooth performance and comfortable, responsive operation.

### GAS PORTS AND VALVES

Just plug and perform. No adjustments to pressures or flows. Ports positioned for convenient installation on your Cat carrier, while hoses are protected.

### GAS-FIRED OPERATING CYCLE

Delivers consistent, reliable performance, especially when breaking materials like non-reinforced concrete, asphalt and cinder block.



### STANDING HEIGHT GREASE POINT

Makes maintenance comfortable and easy.

### MULTIPLE TOOL OPTIONS

Heat-treated, matched to piston diameter and mass to deliver full-blow energy.

### AUTOMATIC ADJUSTMENTS

Suits flow and pressure of Cat carrier for improved performance and longer service life.

### MOUNTING OPTIONS

Available in pin-on configuration for Cat Carriers or flat-top arrangements that come with multiple mounting brackets, which bolt onto the hammer.



# HIGH DUMP BUCKETS

Our high dump buckets are made to effectively move large quantities of low-density materials. The dedicated dumping cylinders and bottom hinge gently roll material out and a grated spill guard directs materials while loading and unloading, without impeding visibility. They're ideal for transfer stations or loading high-sided trucks.

## Specifications

Attachment Models	Compatibility	Interface	Width mm	(in)	Weight kg	(lb)
3.0 m³ (3.9 yd³)	SWL	Fusion™	2550	(100)	1710	(3770)
3.5 m³ (4.6 yd³)	SWL	Fusion™	2750	(108)	1800	(3968)
4.1 m³ (5.4 yd³)	SWL	Fusion™	3060	(120)	2041	(4500)
5.0 m³ (6.5 yd³)	SWL	Fusion™	3060	(120)	2123	(4680)
3.0 m³ (3.9 yd³)	SWL	Pin-on	2550	(100)	1742	(3840)
3.5 m³ (4.6 yd³)	SWL	Pin-on	2750	(108)	1831	(4037)
4.1 m³ (5.4 yd³)	SWL	Pin-on	3060	(120)	2067	(4557)
5.0 m³ (6.5 yd³)	SWL	Pin-on	3060	(120)	2149	(4738)
4.1 m³ (5.4 yd³)	SWL	Pin-on	3060	(120)	2065	(4553)
5.0 m³ (6.5 yd³)	SWL	Pin-on	3060	(120)	2147	(4733)
3.0 m³ (3.9 yd³)	SWL	ISO	2550	(100)	1669	(3680)
3.5 m³ (4.6 yd³)	SWL	ISO	2750	(108)	1757	(3874)
4.1 m³ (5.4 yd³)	SWL	ISO	3060	(120)	2088	(4594)
5.0 m³ (6.5 yd³)	SWL	ISO	3060	(120)	2187	(4833)

SWL: Small Wheel Loader

### EXTRA PROTECTION

Comes with dedicated dumping cylinders and a bottom hinge to “roll out” material. Dual hydraulic cylinders are protected within the bucket structure.

### REINFORCEMENT PLATES

Strengthens inside and rear of bucket for heavier loads.



### ROUNDED SIDEBARS

Helps funnel and retain material.

### SPILL GUARD

Protects linkage, but permits visibility.

### SIDE WALL CYLINDERS

Long, flat bottom for better fill and dump.

# LIGHT MATERIAL BUCKETS

Our light material bucket capacities range from 0.68 to 4.97 m<sup>3</sup> (0.90 to 6.5 yd<sup>3</sup>) and are best at finishing, site clean-up and prep work when moving low-density debris and materials.

## Specifications

Attachment Models	Compatibility	Capacity m <sup>3</sup>	(yd <sup>3</sup> )	Weight kg	(lb)	Coupler Interface
1829 mm (72 in)	CTL, MTL, SSL	0.68	(0.90)	303	(668)	SSL
1981 mm (78 in)	CTL, MTL, SSL	0.75	(0.98)	320	(706)	SSL
2134 mm (84 in)	CTL, MTL, SSL	0.84	(1.1)	338	(746)	SSL
2438 mm (96 in)	CTL, MTL, SSL	0.93	(1.22)	366	(806)	SSL
1770 mm (70 in)	CWL	0.99	(1.3)	391	(862)	SSL
1940 mm (76 in)	CWL	1.22	(1.6)	461	(1016)	SSL
2050 mm (81 in)	CWL	1.52	(2.0)	515	(1135)	SSL
2750 mm (108 in)	SWL	3.05	(4.0)	1220	(2689)	Fusion™
2750 mm (108 in)	SWL	3.44	(4.5)	1303	(2873)	Fusion™
2750 mm (108 in)	SWL	3.82	(5.0)	1367	(3015)	Fusion™
2750 mm (108 in)	SWL	4.20	(5.5)	1439	(3172)	Fusion™
2750 mm (108 in)	SWL	4.97	(6.5)	1502	(3311)	Fusion™
2750 mm (108 in)	SWL	3.05	(4.0)	1252	(2730)	Pin-on
2750 mm (108 in)	SWL	3.44	(4.5)	1317	(2904)	Pin-on
2750 mm (108 in)	SWL	3.82	(5.0)	1389	(3062)	Pin-on
2750 mm (108 in)	SWL	4.20	(5.5)	1440	(3175)	Pin-on
2750 mm (108 in)	SWL	4.97	(6.5)	1497	(3300)	Pin-on
2750 mm (108 in)	SWL	3.44	(4.5)	1312	(2893)	Pin-on
2750 mm (108 in)	SWL	3.82	(5.0)	1371	(3023)	Pin-on
2750 mm (108 in)	SWL	4.20	(5.5)	1438	(3170)	Pin-on
2750 mm (108 in)	SWL	4.97	(6.5)	1496	(3298)	Pin-on

CTL: Compact Track Loader  
CWL: Compact Wheel Loader  
MTL: Multi Terrain Loader

SSL: Skid Steer Loader  
SWL: Small Wheel Loader

## ADVANCED DESIGN

Bucket shape and strike plane angle are engineered for consistent load sizes and greater material retention.

## GREATER DURABILITY

Torque tube increases rigidity for wet, heavy loads of snow.



## LONG-LASTING EDGES

Bolt-on cutting edge is reversible and replaceable, ensuring complete contact with the ground for maximum snow removal.

## INTEGRATED STEP

Built-in step makes it easier to safely enter and exit the machine. Metal grating helps improve grip in wet weather. On models with skid steer loader coupler interface only.

# MATERIAL HANDLING ARMS

Move material with ease. Our material handling arms allow greater reach and easy transportation of anything you can get a grip on.



## Specifications

Attachment Models	Compatibility	Retracted Length		Extended Length	
		mm	(in)	mm	(in)
Extendable	BHL, CWL	2007	(79)	3937	(155)
Extendable	SWL	2760	(109)	4137	(163)
		Width w/ Side Step		Maximum Reach	
Fixed Length	CTL, CWL, MTL, SSL	1309	(52)	2134	(84)
BHL: Backhoe Loader		MTL: Multi Terrain Loader			
CTL: Compact Track Loader		SSL: Skid Steer Loader			
CWL: Compact Wheel Loader		SWL: Small Wheel Loader			

## RIGID CONSTRUCTION

Heavy-duty design is ideal for lifting, carrying and loading a variety of materials and equipment.

## INTEGRATED STEP

Built-in step makes it easier to safely enter and exit the machine. Metal grating helps improve grip in wet weather. On models with skid steer loader coupler interface only.



## ADVANCED GRIP

Heavy-duty locking clasp swivels a full 360 degrees.

## SUPERIOR SIGHT LINES

Single, multi-angled boom provides excellent view to the load.



# MIXING BUCKETS

Our mixing buckets feature cement bag breakers on top for easy addition of bagged materials. Built with reinforced steel for longer life and reduced wear, this attachment is also equipped with a cutting edge that makes it easier to drive into piles of raw materials.



## Specifications

Attachment Models	Compatibility	Length		Weight	
		mm	(in)	kg	(lb)
MB200	CTL, CWL, MTL, SSL	694	(27.3)	290	(639)
MB250	CTL, CWL, MTL, SSL	814	(32.0)	430	(948)

CTL: Compact Track Loader  
CWL: Compact Wheel Loader  
MTL: Multi Terrain Loader

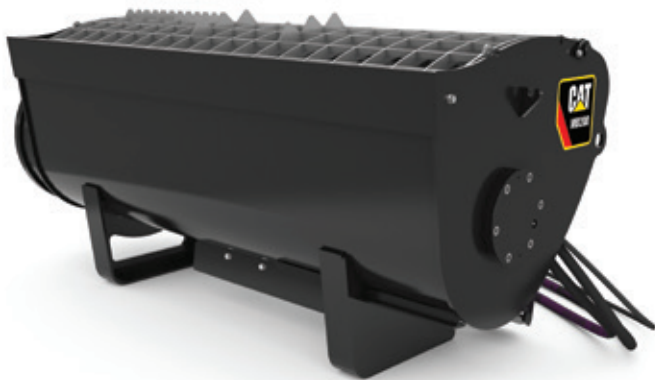
SSL: Skid Steer Loader

### CUTTING EDGE

Allows driving into piles of raw material.

### REINFORCED STEEL

Ensures longer life and reduces wear.



### HIGH TORQUE

Standard flow hydraulic motor spins a large gear reduction, which maximizes mixing torque and ensures thorough, repeatable mixing.

### BOLT-ON PADDLES

Reaches throughout bucket to combine material.

### CHUTE DOOR

Hydraulically controlled to dispense material from machine's cab.

# PICKUP BROOMS

Capture and contain material from road surfaces or your jobsite. Our pickup brooms are built to clean and sweep any surface. Available water kits reduce dust plumes.



## Specifications

Attachment Models	Compatibility	Sweeping Width		Brush Diameter		Coupler Interface
		mm	(in)	mm	(in)	
BP115C	CTL, CWL, MTL, SSL	1524	(60)	660	(26)	SSL
BP118C	CTL, CWL, MTL, SSL	1829	(72)	660	(26)	SSL
BP22	CWL	2200	(87)	700	(27.5)	IT
BP25	BHL, CWL, SWL	2500	(98)	700	(27.5)	IT/Fusion™
BHL: Backhoe Loader		IT: Integrated Tool Carrier		SWL: Small Wheel Loader		
CTL: Compact Track Loader		MTL: Multi Terrain Loader				
CWL: Compact Wheel Loader		SSL: Skid Steer Loader				

## INTEGRATED HOPPER

Sweep and deposit material into a integrated hopper bucket for easy removal and dumping.



## DUAL DIRECTION CAPABILITY

Our brooms operate in forward and reverse for the ultimate in sweeping versatility.



## MORE OPTIONS

Gutter brushes, available for BP115C and BP118C models, allow for sweeping alongside curbed surfaces.

## GREATER DURABILITY

Rigid and durable broom frames protect vital drivetrain components to minimize downtime.

## BETTER BRISTLES

Polypropylene/wire convoluted brushes provide optimum performance for sweeping applications.

# SAND AND GRAVEL BUCKETS

Designed for aggregate handling in batch plant loader applications, our sand and gravel buckets feature side and bottom wear plates to protect the bucket from abrasive materials.



## Specifications

Compatibility	Interface	Width		Capacity Range		Weight	
		mm	(in)	m <sup>3</sup>	(yd <sup>3</sup> )	kg	(lb)
SWL	Fusion™	2743	(108)	2.45-3.21	(3.2-4.2)	1148-1265	(2532-2788)
SWL	Pin-on	2743	(108)	2.52-3.21	(3.3-4.2)	1170-1289	(2580-2842)

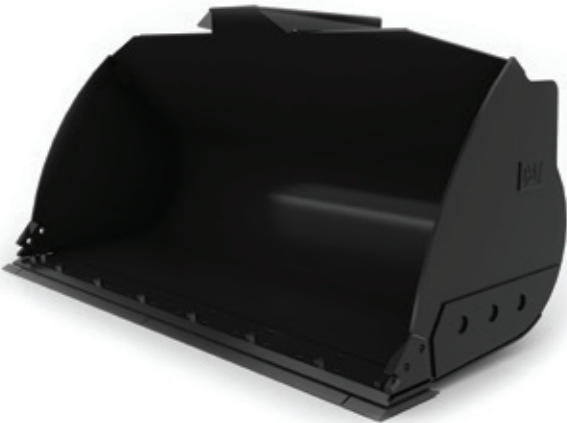
SWL: Small Wheel Loader

### DEFLECTOR

Integrated in the top of the bucket to direct material around the loader linkage.

### PERFORMANCE SERIES

Rounded sidebars, opened throat, and longer floor improves fill factor up to 110%.



### OPTIONAL FUSION HOOK

Minimizes distance between attachment and tires for improve stability and lifting capacity.

### ADDITIONAL WEAR PLATES

Extra support to improve life in extreme conditions.



# SPECIAL APPLICATION BROOMS

With a reinforced core and high-strength, extra-thick polypropylene bristles, our special application brooms are built for aggressive sweeping, capable of moving heavy material and coal seams. An optional water system and shield are available.



### Specifications

Attachment Models	Compatibility	Sweeping Width		Brush Diameter	
		mm	(in)	mm	(in)
2.5	SWL	2500	(98)	915	(36)
3.0	SWL	3000	(118)	915	(36)

SWL: Small Wheel Loader

### METAL SHIELD

Keeps debris moving forward and downward.

### WATER SPRINKLING SYSTEM

400L capacity water tank with full water sprinkler system effectively suppresses dust.



### BRISTLES

1/3 larger than standard size for added strength and durability.

### INTEGRATED LEVEL AND BROOM PITCH INDICATORS

### ADJUSTABLE BROOM DOWN PRESSURE WITH SINGLE BOLT

Water lines, jets, pumps and motors are protected, yet easily accessible.

# UTILITY BROOMS

Cat brooms feature even-pressured sweeping for thorough cleaning. Our utility brooms are designed to gather light debris, in forward or reverse, making them ideal for factory floors and cold planing applications.



## Specifications

Attachment Models	Compatibility	Sweeping Width		Brush Diameter		Coupler Interface
		mm	(in)	mm	(in)	
BU115C	CTL, CWL, MTL, SSL	1510	(59)	660	(26)	SSL
BU118C	CTL, CWL, MTL, SSL	1865	(73)	660	(26)	SSL

CTL: Compact Track Loader  
CWL: Compact Wheel Loader  
MTL: Multi Terrain Loader

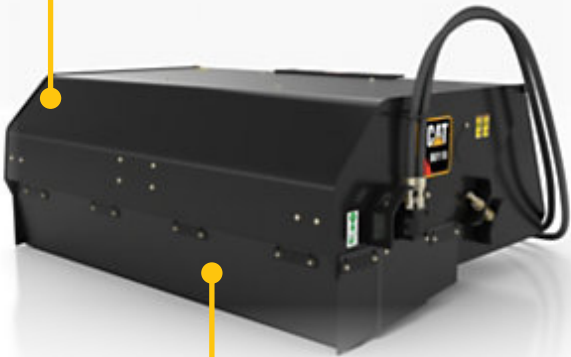
SSL: Skid Steer Loader

### GREATER DURABILITY

Reinforced high-strength steel and a curved hood design protect against damage from front hood impacts.

### ADDED VERSATILITY

Bidirectional bristle rotation allows for dust pan or over-the-brush sweeping of debris.



### ADVANCED SWEEPING

Adjustable locking nut allows the brush core to float, for reduced bristle wear, or provides positive brush down-force for aggressive sweeping.

### INCREASED EFFICIENCY

Large hopper capacity means longer sweeping cycles and a wide opening on the hopper makes emptying easier.

### MORE OPTIONS

Water sprinkler kit is available for dust suppression and a bolt-on cutting edge for extended hopper life in severe applications.

### ENCLOSED DESIGN

Rubber boot on front and sides aids in containing debris and airborne contaminants while sweeping.

# WHEEL SAWS

Our wheel saws can penetrate hard or compact surfaces like asphalt, reinforced concrete, rocky soil or frozen ground. They're ideal for road and utility trenching applications. Hydraulic side-shift and depth control make operating easy. And our deflector plates remove debris from the machine's path for a smooth operation.



## Specifications

Attachment Models	Compatibility	Wheel Width		Cutting Depth	
		mm	(in)	mm	(in)
SW345B*	CTL, MTL, SSL	80	(3)	450	(18)
SW360B*	CTL, MTL, SSL	80/160/200	(3/6/8)	600	(24)
SW380B*	CTL, MTL, SSL	250	(10)	800	(32)
SW460B	CTL, MTL, SSL	80/160/200	(3/6/8)	600	(24)
SW480B	CTL, MTL, SSL	250	(10)	800	(32)

CTL: Compact Track Loader  
MTL: Multi Terrain Loader  
SSL: Skid Steer Loader

## HYDRAULIC ADJUSTMENT

Control depth and side shifting from machine's cab.

## DEFLECTOR PLATES

Removes spoil from machine's path on right and left sides.



## BITS

Concrete bits are standard on all models. Optional all-purpose conical bits are available for tarmac and asphalt applications. Extreme-life bits are available for extreme-duty Cat Wheel Saw applications.

## CAT XT™ HOISING

Leak-free performance.

## COLLAPSIBLE LEGS

Allows attachment to stand independently.

## TRENCH CLEANING DEVICE

Hydraulically controlled from cab. The blade can be maneuvered up and down to remove spoil and ensure a clean trench.

## MAX PRO GAUGE

Delivers operator feedback to maximize productivity.



# VIBRATORY DRUM COMPACTORS

Before pouring concrete or laying asphalt, smooth foundational surfaces with our vibratory drum compactor. Ideal for compacting soil, sand or gravel as well as compressing asphalt patch work, these compactors are often used in residential, commercial and industrial applications.



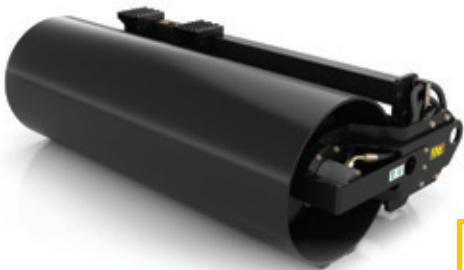
## Specifications

Attachment Models	Machine Models	Drum Width		Dynamic Force	
		mm	(in)	kg	(lb)
CV16B	CTL, CWL, MTL, SSL	1676	(66)	5399	(11903)
CV18B	CTL, CWL, MTL, SSL	1854	(73)	5399	(11903)

CTL: Compact Track Loader      SSL: Skid Steer Loader  
CWL: Compact Wheel Loader  
MTL: Multi Terrain Loader

### FINISH-GRADE WORK

Exclusive vibratory pod design delivers balance between frequency and amplitude to provide a superior matte finish.



### SIMPLIFIED MAINTENANCE

Pod-style weight housings are factory sealed for longer bearing life and easy serviceability.

### SERVICEABLE DESIGN

Replaceable rubber mounts isolate vibration and enhance vibratory capabilities.

### INCREASED PRODUCTIVITY

Higher compaction capabilities provide twice the force of the original design requiring fewer passes for greater productivity.

### GREATER DURABILITY

High-strength steel drums are roll formed and finish welded for a smoother surface and longer life.

### AUTOMATICALLY ADJUSTS

Pivoting interface allows the drum to oscillate by 15 degrees, following the contour of the ground.

### INDUSTRY-LEADING PERFORMANCE

Spring-loaded, dual direction scraper bar maintains constant pressure on the drum to prevent material build up. Its non-metallic construction minimizes noise.

### LONG-LASTING MATERIALS

Cat XT-3 ES hose, couplings and O-ring face seals provide superior, leak-free performance and reliability. And all hoses are wrapped with nylon woven cordura sleeving for added protection.

# VIBRATORY PLATE COMPACTORS

Cover more ground with our vibratory plate compactor's large surface and pack soil faster with its high-power pulses. We've even built in flexible isolators to guard against excessive vibrations.



## Specifications

Attachment Model	Machine Models	Impulse Force			Base Plate Width	
		kN	lbf	Cycles/min	mm	(in)
CVP16	MHEX	16	(3650)	2200	305	(12)
CVP40	BHL, MHEX	40	(8928)	2200	584	(23)

BHL: Backhoe Loader  
MHEX: Mini Excavator

### ISOLATORS

Protected inside the frame for extended durability.

### PRESSURE/FLOW CONTROL VALVE

Safeguards against damaging pressures and flows to enhance reliability.



### REAR CENTERLINE PLUG

Simplifies oil changes through a more complete drain.

### PROTECTED HYDRAULICS

Covers hoses inside frame of compactor to avoid damage sources.

### BACKFILL BLADE

Pushes loose material into place for faster trench work.

### OIL-BATH BEARING

Continuously lubricated for extreme reliability and minimal maintenance.

# COMPATIBILITY



Skid Steer Loaders,  
Compact Track Loaders,  
Multi Terrain Loaders



Angle and Dozer  
Blades



Angle Brooms



Cold Planers



Forks



General Purpose  
Buckets



Hammers



Light Material  
Buckets



Material Handling  
Arms



Mixing Buckets



Pickup Brooms



Utility Brooms



Wheel Saws



Vibratory Drum  
Compactors



Compact Wheel Loaders



Angle and Dozer  
Blades



Angle Brooms



Forks



General Purpose  
Buckets



Light Material  
Buckets



Material Handling  
Arms



Mixing Buckets



Pickup Brooms



Utility Brooms



Vibratory Drum  
Compactors



Backhoe Loaders



Angle Brooms



Cold Planers



Forks



Hammers



Hammers



Material Handling  
Arms



Pickup Brooms



Vibratory Plate  
Compactors



Small Wheel Loaders



Angle Brooms



Forks



General Purpose  
Buckets



Hammers



High Dump  
Buckets



Light Material  
Buckets



Material Handling  
Arms



Pickup Brooms



Sand and Gravel  
Buckets



Special Application  
Brooms



Mini Excavators



Hammers



Vibratory Plate  
Compactors



Telehandlers



General Purpose  
Buckets