

CAT® MINI EXCAVATOR ATTACHMENT OPTIONS

» Get Multiple Machines Out of One

For more information, visit
[Cat.com/en_GB/products/
new/attachments](http://Cat.com/en_GB/products/new/attachments) or
contact your local
Cat dealer.



BUILT FOR IT.™

AEXQ1834-01 January 2016

© 2015 Caterpillar. All Rights Reserved. CAT, CATERPILLAR, BUILT FOR IT, their respective logos, "Caterpillar Yellow," the "Power Edge" trade dress, as well as corporate and product identity used herein, are trademarks of Caterpillar and may not be used without permission.

BUILT FOR IT.™



DO MORE WITH ONE MACHINE.

Invest in what you already own — give your machine Cat® attachments and equip it to do more. And because our attachments are engineered, balanced and tested to each Cat model, they promise to minimize stress and optimize performance. Browse our lineup and find the tools to make your work easier.



AUGERS



Bore with better efficiency.

Our augers offer different speed and torque options for work in a variety of soils. We've engineered their speed to extract soil efficiently and their torque to prevent stalling in dense ground. Select from a range of auger bits. See page 12 for details.

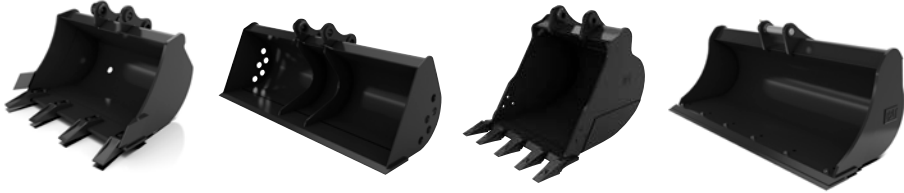
Specifications

Attachment Models	Machine Models	Drive Shaft Torque @ Max Pressure		Drive Method
		Nm	(lb ft)	
A7B	301.4C-302.7D CR	1105	(815)	Direct Drive
A14B	302.2D-304E2	2304	(1700)	Direct Drive
A19B	303E CR-305.5E2 CR	4118	(3037)	Single Planetary
A26B	305E2 CR-308E2 CR SB	6826	(5034)	Double Planetary

Mini Excavators

300.9D	301.7D	302.2D	302.7D CR	303.5E2 CR	305E2 CR	307E2
301.4C	301.7D CR	302.4D	303E CR	304E2 CR	305.5E2 CR	308E2 CR SB

BUCKETS



Move more material in less time.

The shape of our buckets improves digging, loading and material retention. Compared to most competition, we have more capacity per every inch of width. And each is made of high-strength, tempered steel. Select from a range of bucket teeth.

Specifications

Attachment Models	Machine Models	Width Range		Capacity Range	
		mm	(in)	m ³	(yd ³)
Digging	300.9D-302.7D CR	230-700	(9-28)	0.014-0.111	(0.018-0.145)
Ditch Cleaning	all below	700-1600	(28-63)	0.027-0.421	(0.035-0.55)
Tilting Ditch Cleaning	301.4C-305.5E2 CR	1000-1600	(40-63)	0.055-0.28	(0.071-0.366)
Heavy Duty	303E CR-308E2 CR SB	300-914	(12-36)	0.05-0.39	(0.065-0.51)
Heavy Duty Capacity	305E2 CR, 305.5E2 CR	300-915	(12-36)	0.082-0.300	(0.107-0.392)
Heavy Duty Rock	307E2, 308E2 CR SB	610-762	(24-30)	0.23-0.31	(0.30-0.405)
Mud/Grading	all below	1000-1500	(39-59)	0.09-0.52	(0.12-0.68)

Mini Excavators

300.9D 301.7D 302.2D 302.7D CR 303.5E2 CR 305E2 CR 307E2

301.4C 301.7D CR 302.4D 303E CR 304E2 CR 305.5E2 CR 308E2 CR SB

COUPLERS



Move quickly from task to task.

Our Dual Lock™ Pin Grabber Couplers allow operators to change attachments in seconds, increasing job efficiency and enabling one machine to do multiple tasks. We offer two, easy-to-use options: hydraulic (controlled from the cab) and mechanical. And all Cat models include primary and secondary locking systems to ensure what you put on your machine, stays on.

Specifications

Attachment Models	Machine Models	kg	(lb)
Mechanical Dual Lock™ Coupler	301.4C-308E2 CR SB	14-89	(32-195)
Hydraulic Dual Lock™ Coupler	303E CR, 308E2 CR SB	41-93	(90-205)
Hydraulic Dual Lock™ Tilt Coupler	305E2 CR-308E2 CR SB	112-198	(245-436)

Mini Excavators

300.9D 301.7D 302.2D 302.7D CR 303.5E2 CR 305E2 CR 307E2

301.4C 301.7D CR 302.4D 303E CR 304E2 CR 305.5E2 CR 308E2 CR SB

HAMMERS



Separate the toughest surfaces.

Our hammers were designed for hard hits, reducing rock and concrete materials. Each features an automatic shut-off and buffering system to reduce machine vibrations. And some of our hammers are fully enclosed to suppress noise.

Specifications

Attachment Models	Machine Models	Operating Weight*		Impact Frequency	Tool Diameter	
		kg	(lb)		bpm	mm
H25D	300.9	70	(154)	1000-1900	36	(1.42)
H35E, H35Es	301.4C-302.4D	125-130	(276-287)	600-1800	40	(1.57)
H45E, H45Es	301.4C-302.7D CR	145-250	(320-551)	780-1800	50	(1.97)
H55E [†]	302.7D CR-305.5E2 CR	220-315	(485-695)	600-1680	58	(2.28)
H55E	302.7D CR-305.5E2 CR	250-340	(551-750)	600-1680	58	(2.28)
H55Es	302.7D CR-305.5E2 CR	260-345	(573-761)	600-1680	58	(2.28)
H65E [†]	303E CR-305.5E2 CR	260-355	(573-783)	720-1740	68	(2.68)
H65E	305E2 CR-308E2 CR SB	305-380	(673-838)	720-1740	68	(2.68)
H65Es	305E2 CR-308E2 CR SB	315-390	(695-860)	720-1740	68	(2.68)
H75Es	307E2-308E2 CR SB	480-500	(1058-1103)	840-1650	74.5	(2.93)
H95Es	307E2-308E2 CR SB	600-730	(1323-1610)	700-1260	87.5	(3.44)

* Operating weight includes hammer, standard tool and mounting bracket.
[†] Pin-on model

Mini Excavators

300.9D 301.7D 302.2D 302.7D CR 303.5E2 CR 305E2 CR 307E2
 301.4C 301.7D CR 302.4D 303E CR 304E2 CR 305.5E2 CR 308E2 CR SB

RIPPERS



Tear up more terrain.

Built to cut through dense dirt, loosen rocky soil and break below the frost layer, Cat rippers are taking on some of the most challenging ground conditions. And because they're made for specific Cat models, they can better transfer machine power into ripping power.

Specifications

Attachment Models (Shank Length)	Machine Models	Width		Height		Tip Radius		Weight	
		mm	(in)	mm	(in)	mm	(in)	kg	(lb)
490 (19)	303.5E2, 304E2	232	(9.1)	660	(25.9)	650	(26)	45	(99)
676 (27)	305E2 CR, 305.5E2 CR	273	(10.7)	825	(32.4)	810	(32)	61	(134)
861 (34)	307E2, 308E2 CR SB	346	(13.6)	1074	(42.2)	1039	(41)	107	(235)

Mini Excavators

300.9D 301.7D 302.2D 302.7D CR 303.5E2 CR 305E2 CR 307E2
 301.4C 301.7D CR 302.4D 303E CR 304E2 CR 305.5E2 CR 308E2 CR SB

SHEARS



Minimize metal.

Our shears rotate 360 degrees for rapid repositioning and are designed with a straight, lower jaw to improve the cutting force.

Specifications

Attachment Model	Machine Models	Throat Force		Weight (boom-mount)		Jaw Opening		Jaw Depth	
		kN	(Sh Ton)	kg	(lb)	mm	(in)	mm	(in)
S305	304E2 CR-308E2 CR SB	1812	(204)	608	(1,340)	240	(9.4)	290	(11.4)

Mini Excavators

300.9D 301.7D 302.2D 302.7D CR 303.5E2 CR 305E2 CR 307E2
301.4C 301.7D CR 302.4D 303E CR 304E2 CR 305.5E2 CR 308E2 CR SB

THUMBS



Go from digging to material handling.

Our thumbs work with buckets to grab, pick or sort material. They're hydraulically controlled from the cab, opening and closing around loads. And when you don't need it, the thumb can recline against the machine stick.

Specifications

Machine Models	Thumb Style	Overall Width		Stored Height		For Use with Coupler	Number of Tines	Rotation
		mm	(in)	mm	(in)			
302.4D 302.7D CR	Hydraulic	373	(14.68)	271	(10.7)	Yes	2	126.6°
303E	Hydraulic	340	(13.4)	310	(12.2)	Yes	2	116.8°
303.5E2 CR	Hydraulic	399	(15.7)	307	(12.1)	Yes	2	116.8°
304E2 CR	Hydraulic	364	(14.0)	281	(11.0)	Yes	2	116.8°
305E2 CR	Hydraulic	386	(15.2)	272	(10.7)	Yes	2	131°
305.5E2 CR	Hydraulic	477	(18.8)	278	(11)	Yes	2	131°
307E2 308E2 CR SB	Hydraulic	458	(18.0)	466	(18.3)	No	2	133°
	Hydraulic	458	(18.0)	556	(21.9)	Yes	2	133°
	Stiff Link	458	(18.0)	466	(18.3)	No	2	81°
	Stiff Link	458	(18.0)	556	(21.9)	Yes	2	81°
	Pro Plus Series	458	(18.0)	526	(20.7)	No	2	181°
	Pro Plus Series	458	(18.0)	799	(31.5)	Yes	2	174°

Mini Excavators

300.9D 301.7D 302.2D 302.7D CR 303.5E2 CR 305E2 CR 307E2
301.4C 301.7D CR 302.4D 303E CR 304E2 CR 305.5E2 CR 308E2 CR SB

VIBRATORY PLATE COMPACTORS



Pack with power.

Cover more ground with our vibratory plate compactor's large surface and pack soil faster with its high-power pulses. We've even built in flexible isolators to guard against excessive vibrations.

Specifications

Attachment Models	Machine Models	Impulse Force		Cycles min	Base Plate Width	
		kN	(lbf)		mm	(in)
CVP16	302.7D CR-305.5E2 CR	16	(3650)	2200	305	(12)
CVP40	307E2, 308E2 CR SB	40	(8928)	2200	584	(23)

Mini Excavators						
300.9D	301.7D	302.2D	302.7D CR	303.5E2 CR	305E2 CR	307E2
301.4C	301.7D CR	302.4D	303E CR	304E2 CR	305.5E2 CR	308E2 CR SB

WORK WITHOUT WORRY.

We back our attachments with a one-year warranty and ongoing Cat dealer support. It's another way we're helping protect what you rely on.



GROUND ENGAGING TOOLS (GET)

Choosing the right GET is critical. Each is engineered to maximize machine performance in specific applications, reducing resistance while boring, digging or scraping. Our GET also protect heavy-wear areas, extending attachment life and lowering maintenance costs.

AUGER BITS



Standard Bit

- Factory standard
- For drilling holes with a large diameter



Tree Bit

- Tapered tip
- For drilling holes with a large mouth and narrow base to properly fit a root ball or holes with a small diameter to fill with mulch or fertilizer



Industrial Bit

- Excellent tooth retention while digging
- Allows for easy removal and installation



Standard Rock Drill Head Bit

- Transforms a standard bit into an industrial bit
- For severe ground conditions including rock and various types of concrete
- Bolt-on design for easy removal when returning to normal conditions

Auger bit sizes range from 152 to 914 mm (6 to 36 in) in diameter to a depth of approximately 1270 mm (50 in). Stackable extensions range from 305 to 1829 mm (12 to 72 in) in length and are available to enable deeper drilling.

BUCKET TEETH



Wide

- Low penetration
- Low impact applications
- Use to smooth ground surfaces



Extra Duty

- Moderate penetration
- Use in moderate impact applications
- More wear material



General Duty

- Moderate penetration
- Moderate impact and abrasive conditions



Penetration Plus

- Good penetration
- Moderate to high impact applications



Penetration

- Very good penetration
- Moderate impact and lower abrasive conditions
- Less wear material



Double Spike

- Very good penetration
- Use on fracturable materials
- Install in corner positions with spike centers



Spike

- Excellent penetration
- Use on cohesive materials
- Less wear material

QUICK REFERENCE

Find attachments made for your work.

	Augers	Buckets	Couplers	Hammers	Rippers	Shears	Thumbs	Vibratory Plate Compactors
Agriculture	x	x	x				x	
Concrete Prep and Flatwork		x	x					x
Excavation and Earth Moving	x	x	x		x			
Finishing and Site Clean-Up		x	x				x	
Landscaping	x	x	x				x	
Material Handling		x	x					
Rental	x	x	x	x	x	x	x	x
Residential and Commercial Construction	x	x	x	x			x	x
Site Prep and Demolition		x	x	x	x	x	x	
Trenching and Utilities	x	x	x	x	x		x	x

Find attachments made for your machine.

Machine Models	Augers	Buckets					Couplers		Hydraulic Hammers	Rippers	Shears	Thumbs	Vibratory Plate Compactors
		Digging	Ditch Cleaning	Tilting Ditch Cleaning	Heavy Duty	Heavy Duty Capacity	Heavy Duty Rock	Dual Lock™					
300.9D		x	x						x				
301.4C	x	x	x	x			x		x				
301.7D, 301.7D CR	x	x	x	x			x		x				
302.2D, 302.4D	x	x	x	x			x		x		x		
302.7D CR	x	x	x	x			x		x		x		x
303E CR, 303.5E2 CR	x		x	x	x		x		x	x	x		x
304E2 CR	x		x	x	x		x		x	x	x		x
305.5E2 CR, 305E2 CR	x		x	x	x	x	x	x	x	x	x		x
307E2, 308E2 CR SB	x		x		x		x	x	x	x	x		x

Machine model availability and attachments vary by region. Please contact your local Cat dealer for availability.