

924K, 930K, 938K

Wheel Loaders



	924K	930K	938K
Engine Model*	Cat® C7.1 ACERT™	Cat C7.1 ACERT	Cat C7.1 ACERT
Maximum Rated Gross Power:			
ISO 14396	105 kW (141 hp)	119 kW (160 hp)	140 kW (188 hp)
ISO 14396 (DIN)	105 kW (143 hp)	119 kW (162 hp)	140 kW (190 hp)
Bucket Capacity	1.7-5.0 m ³ (2.2-6.5 yd ³)	2.1-5.0 m ³ (2.7-6.5 yd ³)	2.5-5.0 m ³ (3.3-6.5 yd ³)
Full Turn Tip Load	7765 kg (17,113 lb)	8470 kg (18,667 lb)	10 076 kg (22,206 lb)
Operating Weight	12 019 kg (26,490 lb)	13 150 kg (28,982 lb)	15 465 kg (34,085 lb)

*Engine meets Brazil MAR-1, equivalent to U.S. EPA Tier 3 and EU Stage IIIA.

Making Your Choice Easy

Efficiently Powerful

Experience Hybrid like fuel efficiency with an intelligent hydrostatic power train and industry leading fuel savings. For your toughest and most demanding applications a new Performance Mode will boost the power and hydraulic speed.

Work Made Easy

Move more with Caterpillar's patented quick loading Performance Series buckets and optimized Z-bar linkage. The parallel lift and high tilt forces allow you to safely handle loads. Multi-function work has never been easier with dedicated pumps and a flow sharing implement valve.

Enjoy All Day Comfort

Have a seat in the K Series Small Wheel Loader and enjoy, whisper quiet sound levels, all around visibility and seat mounted joystick controls. The large spacious cab combined with Caterpillar's exclusive hydraulic cylinder damping make this the most comfortable seat on your job site.

Configured for Success

A complete range of optional equipment gives you the versatility to configure a K Series Small Wheel Loader to be successful in your business.

Contents

Efficiently Powerful.....	4
Work Made Easy.....	6
Enjoy All Day Comfort.....	8
Configured for Success	10
Service.....	12
Customer Support.....	12
Wheel Loader Specifications	13
Bucket Specifications.....	18
Bucket Selection Tables	25
Operating Specifications.....	29
Supplemental Specifications	33
Standard and Optional Equipment	35





The Cat 924K, 930K and 938K Small Wheel Loaders set the standard for productivity, fuel efficiency and operator comfort. The improved optimized Z-bar loader linkage delivers the quick loading performance of a traditional Z-bar with the parallelism and load handling capability of a tool carrier. A high torque, low speed C7.1 ACERT engine works in concert with an intelligent hystat power train to deliver fuel efficiency as standard. Experience the new industry benchmark.



Efficiently Powerful

Experience hybrid-like fuel efficiency with more power when you need it.

Intelligent Power Management

The Caterpillar exclusive Intelligent Power Management system has been further enhanced to monitor operator input and power availability to keep the machine working at peak efficiency and provide the operator with greater customization to suit their application.

Power on Demand

A choice of Power Modes allows you to choose between maximum fuel efficiency or boosted power along with hydraulic speed.



Standard Power Mode

- Saves up to 25% fuel compared to H Series Cat Loader.
- Delivers up to 10% more productivity compared to H Series Cat Loader.
- Reduces cab sound levels down to a whisper quiet 72 dB(A) typical.

Performance Power Mode

- Enabled at the push of a button (HP+).
- Boosts engine power by up to 10% and engine speed by over 12%.
- Increases hydraulic cycle times and productivity.

Six Cylinders of Efficient Power

The Cat C7.1 ACERT engine provides cleaner, quieter operation while delivering superior performance and durability through a high torque, low speed design. Proven engine technology meets the Brazil MAR-1, equivalent to Tier 3/Stage IIIA.

- Maximum engine speed of 1,800 rpm and working range of 1,200 to 1,500 rpm significantly reduces fuel burn and engine wear.
- High ambient cooling package as standard allows you to operate continuously at peak performance on long hot days.
- Robust fuel system with multi-stage filtration, improved dirt and water holding capacity, and durable injectors are designed to handle poor fuel quality.
- Reduced maintenance complexity with automatic fuel priming system and service-free hydraulic valve-lash adjustment.



Power to the Ground

Lock up and go with fully locking front differential axles that can be engaged on the move at full torque with the pull of a trigger on the seat mounted joystick. Adjustable rimpull control allows you to match wheel torque to ground conditions, maintaining machine performance and reducing tire wear.

Independent service brakes on front and rear axles provide robust stopping performance while a push button electronic park brake allows you to safely secure the machine with ease.



Work Made Easy

Getting the job done.



Optimized Z-bar Linkage

The Caterpillar patented optimized Z-bar linkage combines the digging efficiency of a traditional Z-bar with integrated tool carrier capabilities for great performance and versatility.

- **Perfect Parallelism** functionality available in Fork Mode gives truly predictable performance while high tilt forces throughout the working range help you safely and confidently handle loads with precise control.
- **Visibility** to bucket corners and fork tips at ground level remain excellent while sight lines at maximum lift are improved with a Generation II lift arm design.
- **Lift higher and reach further** with optional High Lift linkage available on all three models.

Quick Loading Performance Series Buckets

Performance Series Buckets deliver up to 10% higher fill factors and better material retention for significant productivity and fuel efficiency improvements. The buckets feature a longer floor to take a bigger bite of the pile, an open throat to heap higher and curved side bars to help with material retention. This optimized shape is echoed across the General Purpose, Light Material and High Dump bucket families.



Smooth and Predictable Multi-Function Performance

K Series machines feature an electro-hydraulic control system that is governed by the Intelligent Power Management system for peak efficiency. The load-sensing, variable flow system senses work demand and adjusts flow and pressure to match the operators request.

- **Multi-Function without compromise** through dedicated hydraulic systems featuring one pump for the Intelligent Hydrostatic drive, a 2nd pump for the implements, and a 3rd pump for the steering system. Drive, Lift and Steer simultaneously with smooth predictable control. The K Series simply does what you ask it to.
- **Programmable in-cab kick-outs** are easy to set on the go for tilt, lower and lift. This feature is ideal for applications where the work cycle is repeatable allowing you to quickly return to programmed set points such as ground and level.
- **Quicker hydraulic response** for fine grading at speed and agriculture applications through Lift and Tilt response settings.



The image shows the interior of a CAT machine cab. A large, grey, textured seat with a CAT logo on the backrest is the central focus. To the left is a steering wheel and a dashboard with a large LCD display. The cab has large windows and external mirrors. A yellow banner is overlaid on the top left of the image.

Enjoy All Day Comfort

Best seat on your job site.

Have a Seat and Experience:

- **Seat-mounted controls** featuring a low effort joystick for lift and tilt functions along with integrated Forward/Neutral/Reverse switch, differential lock trigger and optional third and fourth auxiliary functions.
- **Superior all around visibility** with single piece front windshield, new parabolic external mirrors, redesigned Generation II linkage and clean hydraulic lines routing.
- **Automatic climate control** with heated rear glass and external mirrors for a quick defrost.
- **Fully adjustable controls** including steering column, joystick and seat suspension.
- **Information at a glance** with large primary LCD display and optional secondary display.
- **An extra eye on the job site** with optional rearview camera and integrated object detection.



Enjoy coming to work with:

- **A spacious, safe, quiet operator environment** featuring ergonomic controls, seat belt notification and optional Bluetooth radio with integrated microphone plus an MP3 port.
- **Easy access to vital machine parameters** with the optional secondary display that works in conjunction with the standard soft touch panel to allow real time adjustments to machine features and an integrated help button with over 25 languages.
- **Comfortable soft stops at cylinder end stroke** conditions and programmed kick-out points with Caterpillar's exclusive electro-hydraulic cylinder snubbing.
- **An even smoother ride** with optional Ride Control when working unloaded and loaded with excellent material retention.
- **Early starts and late finishes** are made easier with optional LED lighting package that includes engine compartment lighting to illuminate the way for checking oil, and coolant level along with refueling the machine in dark conditions.

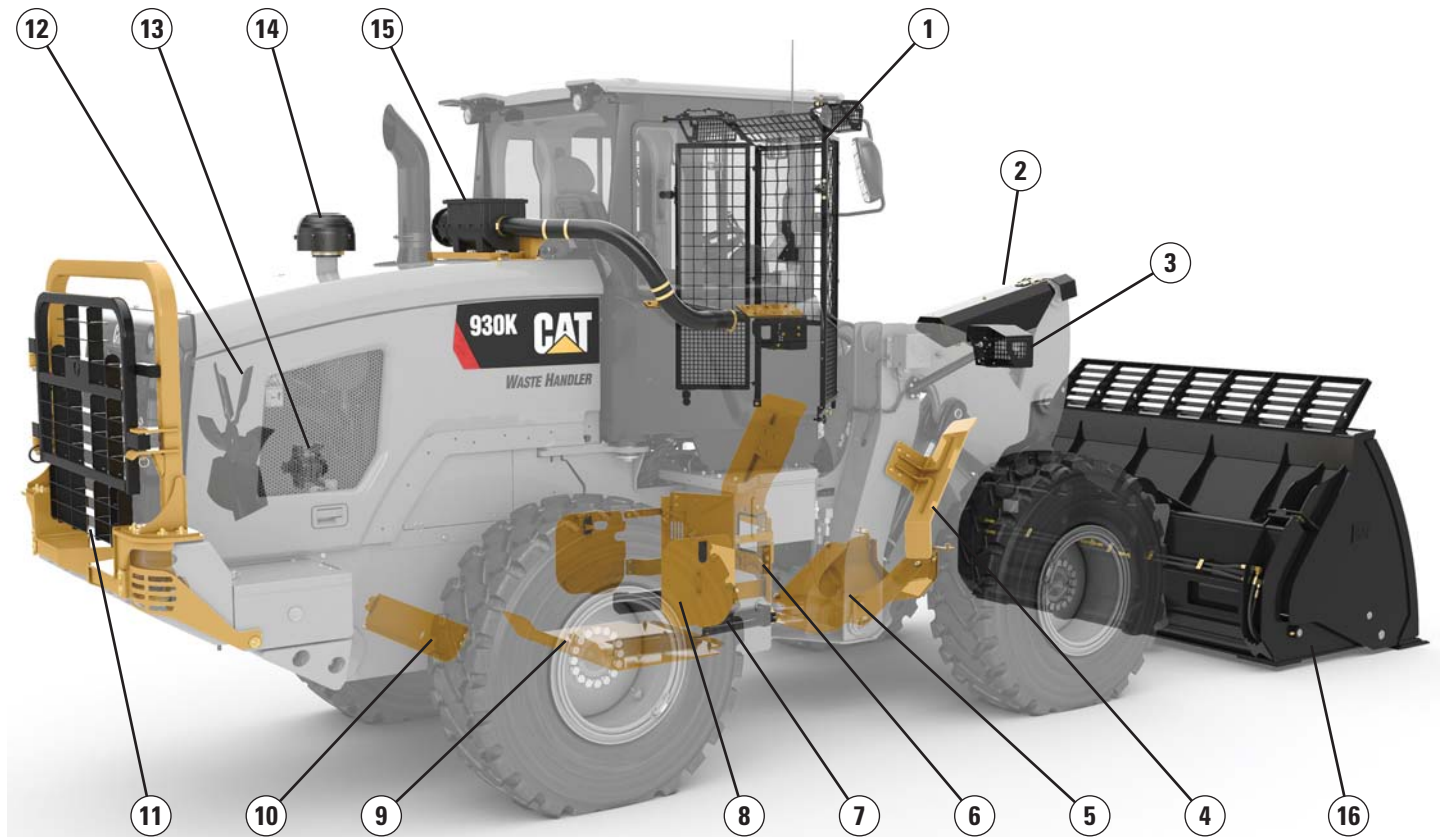


Configured for Success

Ready to work for you.

The Way You Want It

A complete range of optional equipment and work tools give you the versatility to configure a K Series wheel loader to be successful in your business. Get with your Cat dealer to configure yours.



Guards:

- 1) Windshield
- 2) Tilt cylinder
- 3) Lights
- 4) Fender deflectors*
- 5) Drive shaft
- 6) Hitch
- 7) Steering cylinders
- 8) Side power train
- 9) Lower power train
- 10) Crank case
- 11) Rear radiator (930K and 938K only)*

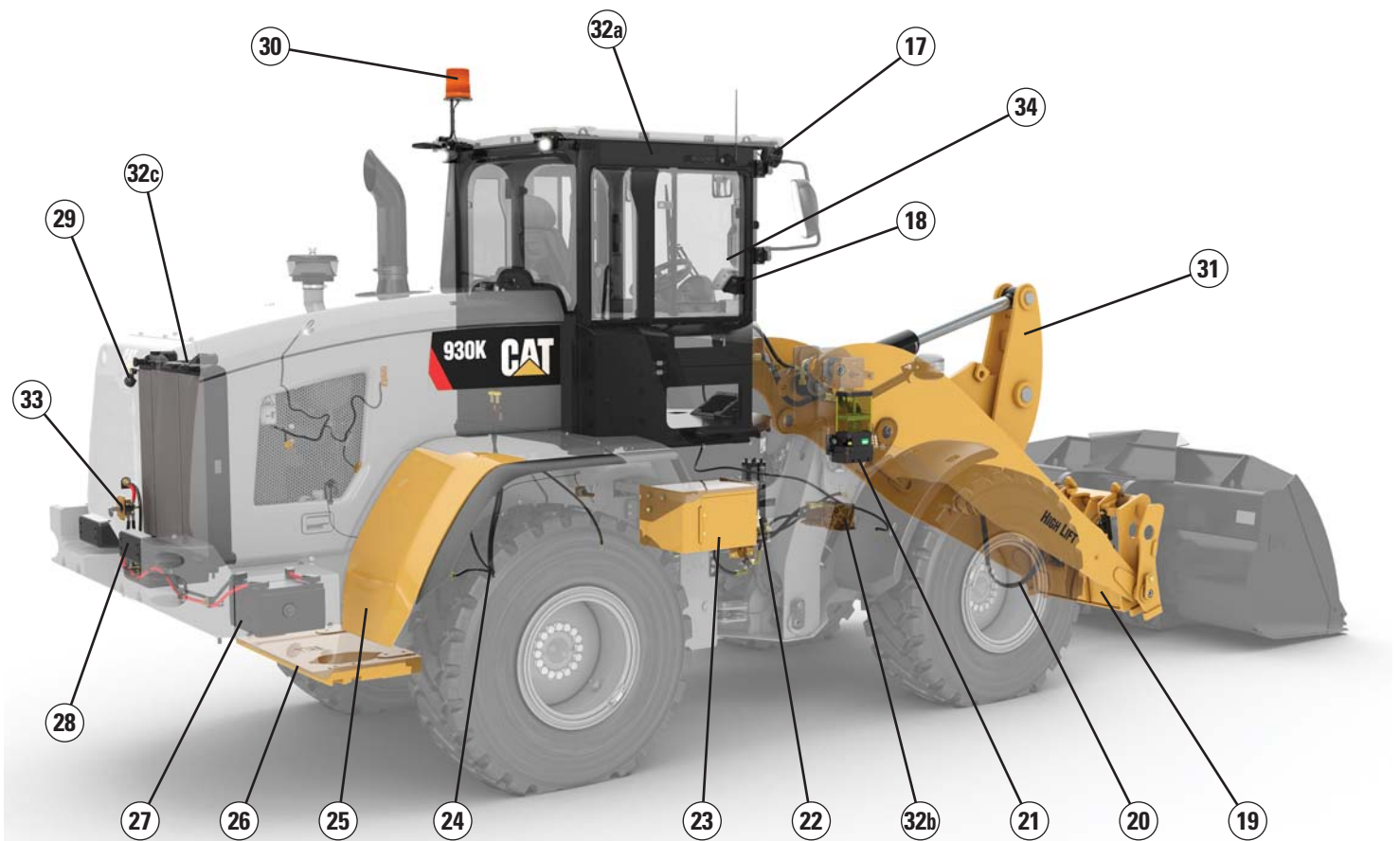
Debris Packages:

- 12) Reversing fan
- 13) Sealed alternator
- 14) Turbine precleaner
- 15) RESPA precleaner*

Work Tools:

- 16) Full range of attachments

(continued on next page)



Other Options:

17) LED auxiliary lights

18) Secondary display

19) Coupler: Fusion™

20) Auxiliary hydraulics: 3rd and 4th

21) Autolube*

22) Ride Control

23) Tool box

24) Elevated breathers: axles and gear box*

25) Fenders: extended and full coverage*

26) Counterweights: heavy and Log/Aggregate

27) Cold start package*

28) Rear object detection*

29) Rearview camera

30) Beacon

31) High Lift*

Corrosion Protection Package*,**

32) Three stage painting process for:

a) Cab

b) Implement

c) Cooling package

33) Sealed disconnect switch

34) CPM – Cat Production Measurement

*Not available in all regions.

**Also includes items (13) Sealed alternator, (14) Turbine precleaner, sealed and greased electrical harness connections, wrapped hydraulic couplings, clear coat varnish on power train and electrical panels.

Service

Schedule your downtime to maximize your up time.

Get up and running quickly with ground level, daily service access and optional engine compartment lighting. Three large service doors can be opened and closed in any order to give full access to filters and service points. Extended service intervals on hydraulic and power train filters reduce service time and maximize uptime. Additional service features include:



- **Product Link™ Pro and Elite optional** with VisionLink® to track machine, utilization, production, and diagnostics.
- **Maintenance reminders** through secondary display at scheduled intervals.
- **Quick fuel filter service** with Caterpillar's exclusive electric fuel priming pump.
- **Jump start studs** as standard equipment.
- **Extended cleanouts** with single plane cooling system and wide spaced 6 fins per inch coolers as standard.
- **Integrated Autolube** (optional) with adjustable greasing frequency.

Customer Support

Unmatched service makes the difference.

Renowned Cat Dealer Support

Rely on your Cat dealer to help you every step of the way with new or used machine sales, rental or rebuild options to meet your business needs.

Maximize your machine uptime with unsurpassed worldwide parts availability, trained technicians and customer support agreements.

Let us earn your business. Experience a K Series Small Wheel Loader and join the Caterpillar family.



924K, 930K, 938K Wheel Loader Specifications

Engine

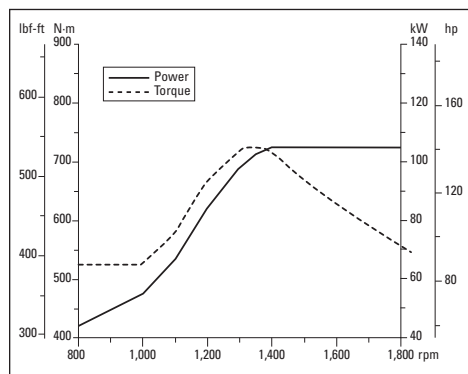
Cat C7.1 ACERT	924K				930K				938K			
	Performance (HP+)		Standard		Performance (HP+)		Standard		Performance (HP+)		Standard	
	Range 1-4		Range 1-3*		Range 1-4		Range 1-3*		Range 1-4		Range 1-3*	
Maximum Rated Gross Power	kW hp		kW hp		kW hp		kW hp		kW hp		kW hp	
Maximum Engine Speed	1,800 rpm		1,600 rpm		1,800 rpm		1,600 rpm		1,800 rpm		1,600 rpm	
ISO 14396	105	141	101	135	119	160	113	152	140	188	129	173
ISO 14396 (DIN)	105	143	101	137	119	162	113	154	140	190	129	175
Rated Net Power	1,800 rpm		1,600 rpm		1,800 rpm		1,600 rpm		1,800 rpm		1,600 rpm	
SAE J1349 at Minimum Fan Speed	102	137	98	131	116	156	110	148	136	182	126	169
ISO 9249 (DIN) at Minimum Fan Speed	103	140	99	135	117	159	111	151	138	188	127	173
Maximum Gross Torque	N-m	lbf-ft	N-m	lbf-ft	N-m	lbf-ft	N-m	lbf-ft	N-m	lbf-ft	N-m	lbf-ft
ISO 14396	725	534	725	534	787	580	787	580	912	672	896	660
Maximum Net Torque	SAE J1349		704 519		704 519		753 555		753 555		876 646	
ISO 9249 (1977)/EEC 80/1269	711 524		711 524		761 561		761 561		886 653		870 641	
Displacement	7.01 L		427 in ³		7.01 L		427 in ³		7.01 L		427 in ³	
Bore	105 mm		4 in		105 mm		4 in		105 mm		4 in	
Stroke	135 mm		5 in		135 mm		5 in		135 mm		5 in	

* Range 4 power and torque is equal to Performance Mode with Caterpillar Power by Range technology.

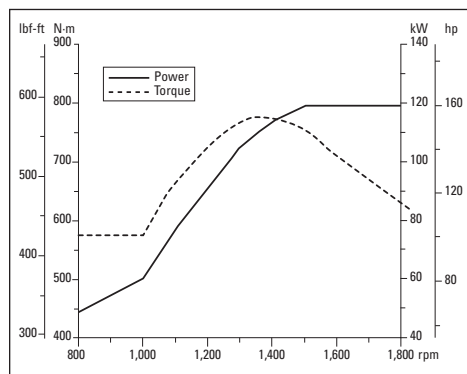
• Net power shown is the power available at the flywheel when the engine is equipped with alternator and air cleaner.

• The Cat C7.1 ACERT engine meets the Brazil MAR-1, equivalent to Tier 3/Stage IIIA.

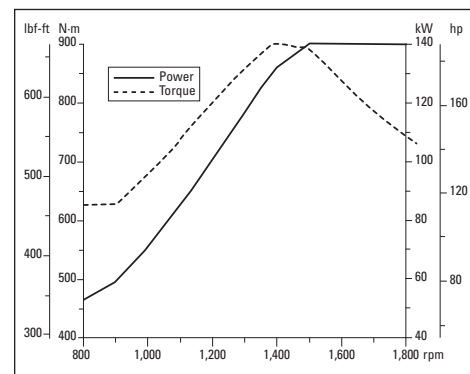
924K



930K



938K



Cab



- ROPS: ISO 3471: 2008.
- FOPS: ISO 3449: 2005 LEVEL II.
- The declared dynamic operator sound pressure level is 72 dB(A) when “ISO 6396:2008” is used to measure the value for an enclosed cab.
- The measurement was conducted at 70% of the maximum engine cooling fan speed, with the cab doors and cab windows closed. The cab was properly installed and maintained. The sound level may vary at different engine cooling fan speeds.
- The declared exterior sound power level is 104 dB(A) when the value is measured according to the dynamic test procedures and the conditions that are specified in “ISO 6395:2008.”

924K, 930K, 938K Wheel Loader Specifications

Loader Hydraulic System



- Implement system uses a dedicated load sensing variable displacement pump with dual double acting lift cylinders and a single double acting tilt cylinder.
- Flow values listed are for a machine running in Performance Power Mode (1,800 rpm).

* 3rd and 4th function flow is fully adjustable from 20% to 100% of maximum flow through the secondary display when equipped.

	924K		930K		938K	
Maximum Flow – Implement Pump	150 L/min	40 gal/min	190 L/min	50 gal/min	190 L/min	50 gal/min
3rd Function Maximum Flow*	150 L/min	40 gal/min	190 L/min	50 gal/min	190 L/min	50 gal/min
4th Function Maximum Flow*	150 L/min	40 gal/min	190 L/min	50 gal/min	190 L/min	50 gal/min
Maximum Working Pressure – Implement Pump	26 000 kPa	3,771 psi	25 000 kPa	3,626 psi	28 000 kPa	4,061 psi
Relief Pressure – Tilt Cylinder	28 000 kPa	4,061 psi	28 000 kPa	4,061 psi	30 000 kPa	4,351 psi
3rd and 4th Function Maximum Working Pressure	26 000 kPa	3,771 psi	25 000 kPa	3,626 psi	28 000 kPa	4,061 psi
3rd and 4th Function Relief Pressure	28 000 kPa	4,061 psi	28 000 kPa	4,061 psi	30 000 kPa	4,351 psi
Lift Cylinder: Double Acting						
Bore Diameter	110 mm	4.3 in	120 mm	4.7 in	120 mm	4.7 in
Rod Diameter	60 mm	2.4 in	65 mm	2.6 in	65 mm	2.6 in
Stroke	728 mm	28.7 in	728 mm	28.7 in	789 mm	31.1 in
Tilt Cylinder: Double Acting						
Bore Diameter	130 mm	5.1 in	150 mm	5.9 in	150 mm	5.9 in
Rod Diameter	70 mm	2.8 in	90 mm	3.5 in	90 mm	3.5 in
Stroke	555 mm	21.9 in	555 mm	21.9 in	555 mm	21.9 in
Cycle Times: Performance (HP+) at 1,800 rpm/ Standard Power Mode at 1,600 rpm						
Raise (Ground Level to Maximum Lift)	5.4/6.3 seconds		5.1/5.7 seconds		5.5/6.2 seconds	
Dump (at Maximum Lift Height)	1.5/1.7 seconds		1.5/1.7 seconds		1.5/1.7 seconds	
Float Down (Maximum Lift to Ground Level)	2.6/2.6 seconds		2.7/2.7 seconds		2.7/2.7 seconds	
Total Cycle Time	9.5/10.6 seconds		9.3/10.1 seconds		9.7/10.6 seconds	

Steering



- Steering system uses a dedicated load sensing variable displacement pump with dual double acting cylinders.
- Flow values listed are for a machine running in Performance Power Mode (1,800 rpm).
- Flow values listed are for a machine running in Performance Mode (1,800 rpm).

	924K		930K		938K	
Steering Cylinder: Double Acting						
Bore Diameter	70 mm	2.8 in	70 mm	2.8 in	80 mm	3.1 in
Rod Diameter	40 mm	1.6 in	40 mm	1.6 in	50 mm	2 in
Stroke	438 mm	17.2 in	438 mm	17.2 in	399 mm	15.7 in
Maximum Flow – Steering Pump	125 L/min	33 gal/min	130 L/min	34 gal/min	130 L/min	34 gal/min
Maximum Working Pressure – Steering Pump	24 130 kPa	3,500 psi	24 130 kPa	3,500 psi	24 130 kPa	3,500 psi
Maximum Steering Torque						
0° (Straight Machine)	50 375 N·m	37,155 lbf-ft	50 375 N·m	37,155 lbf-ft	57 630 N·m	42,506 lbf-ft
40° (Full Turn)	37 620 N·m	27,747 lbf-ft	37 620 N·m	27,747 lbf-ft	42 570 N·m	31,398 lbf-ft
Steering Cycle Times (Full Left to Full Right)						
Minimum RPM: Pump Flow Limited	2.8 seconds		2.8 seconds		3.1 seconds	
Maximum RPM: 90 rpm Steering Wheel Speed	2.4 seconds		2.4 seconds		2.3 seconds	

924K, 930K, 938K Wheel Loader Specifications

Transmission



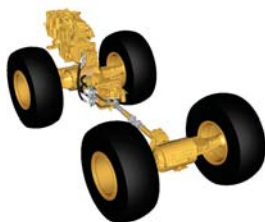
* Creeper control allows maximum speed range adjustability from 1 km/h (0.6 mph) to 13 km/h (8 mph) in Range 1 through the secondary display when equipped. Factory default is 7 km/h (4.4 mph).

	924K		930K		938K	
Forward and Reverse						
Range 1*	1-13 km/h	0.6-8 mph	1-13 km/h	0.6-8 mph	1-13 km/h	0.6-8 mph
Range 2	13 km/h	8 mph	13 km/h	8 mph	13 km/h	8 mph
Range 3	27 km/h	17 mph	27 km/h	17 mph	27 km/h	17 mph
Range 4	40 km/h	25 mph	40 km/h	25 mph	40 km/h	25 mph

Service Refill Capacities

	924K		930K		938K	
Fuel Tank	195 L	51.5 gal	195 L	51.5 gal	195 L	51.5 gal
Cooling System	32 L	8.5 gal	32 L	8.5 gal	32 L	8.5 gal
Engine Crankcase	19.5 L	5.2 gal	19.5 L	5.2 gal	19.5 L	5.2 gal
Transmission (Gear Box)	8.5 L	2.2 gal	8.5 L	2.2 gal	11 L	2.9 gal
Front Axles	21 L	5.5 gal	26 L	6.9 gal	35 L	9.2 gal
Rear Axles	21 L	5.5 gal	25 L	6.6 gal	35 L	9.2 gal
Hydraulic System (Including Tank)	160 L	42.3 gal	165 L	43.6 gal	170 L	44.9 gal
Hydraulic Tank	90 L	23.8 gal	90 L	23.8 gal	90 L	23.8 gal

Power Train



• Power train is governed by the Caterpillar exclusive Intelligent Power Management system to deliver peak performance and efficiency.

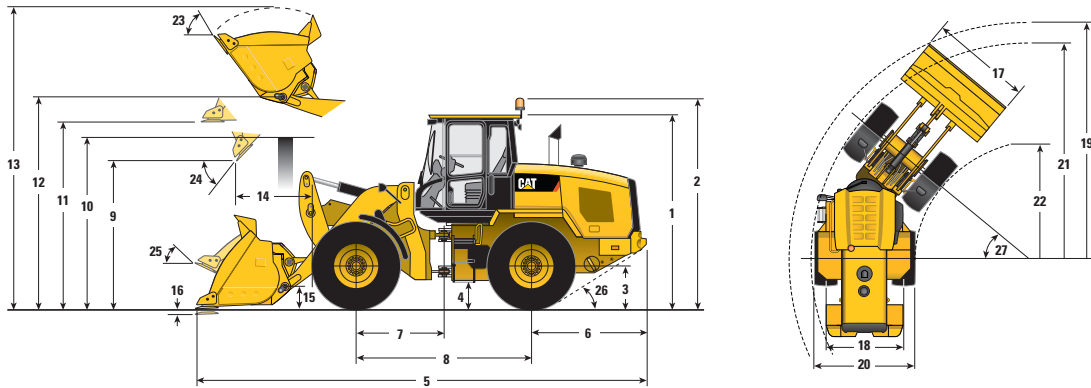
**Optional differential front locking axle can be engaged on the go at full torque to 10 km/h (6.2 mph) on the 924K/930K and up to 20 km/h (12.4 mph) on the 938K.

	924K	930K	938K
Front Axle	Fixed	Fixed	Fixed
Traction Aid**	Open differential (standard) Locking differential (optional)	Open differential (standard) Locking differential (optional)	Open differential (standard) Locking differential (optional)
Rear Axle	Oscillating	Oscillating	Oscillating
Oscillation Angle by Tire Size			
17.5 R25	± 13.5 degrees	—	—
20.5 R25	± 11 degrees	± 11 degrees	± 11 degrees
Traction Aid (optional)	Limited slip differential	Limited slip differential	Limited slip differential
Brakes			
Service	Inboard wet disc	Inboard wet disc	Outboard wet disc
Park	Spring applied hydraulically released	Spring applied hydraulically released	Spring applied hydraulically released

924K, 930K, 938K Wheel Loader Specifications

Dimensions with Bucket

All dimensions are approximate. Dimensions will vary with bucket, and tire choice. Refer to Operating Specifications with Buckets.



*Vary with bucket.

**Vary with tire.

Standard Lift

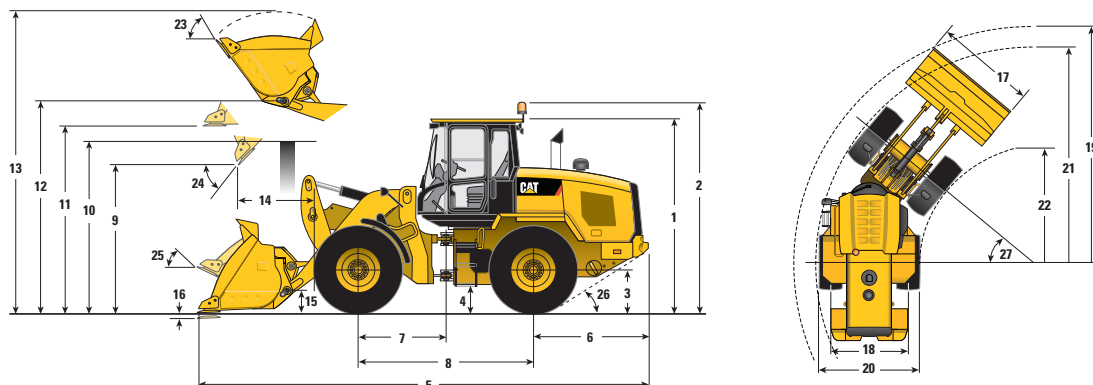
	924K		924K		930K		938K	
** 1 Height: Ground to Cab	3340 mm	10'11"	3252 mm	10'8"	3340 mm	10'11"	3340 mm	10'11"
** 2 Height: Ground to Beacon	3707 mm	12'1"	3619 mm	11'10"	3707 mm	12'1"	3707 mm	12'1"
** 3 Height: Ground Axle Center	685 mm	2'2"	597 mm	1'11"	685 mm	2'2"	685 mm	2'2"
** 4 Height: Ground Clearance	397 mm	1'3"	309 mm	1'0"	397 mm	1'3"	386 mm	1'3"
* 5 Length: Overall	7374 mm	24'2"	7442 mm	24'5"	7488 mm	24'6"	7604 mm	24'11"
6 Length: Rear Axle to Bumper	1986 mm	6'6"	1986 mm	6'6"	1993 mm	6'6"	1968 mm	6'5"
7 Length: Hitch to Front Axle	1500 mm	4'11"	1500 mm	4'11"	1500 mm	4'11"	1525 mm	5'0"
8 Length: Wheel Base	3000 mm	9'10"	3000 mm	9'10"	3000 mm	9'10"	3050 mm	10'0"
* 9 Clearance: Bucket at 45°	2857 mm	9'4"	2769 mm	9'1"	2855 mm	9'4"	2869 mm	9'4"
** 10 Clearance: Load over Height	3308 mm	10'10"	3220 mm	10'6"	3331 mm	10'11"	3354 mm	11'0"
** 11 Clearance: Level Bucket	3526 mm	11'6"	3437 mm	11'3"	3580 mm	11'8"	3642 mm	11'11"
** 12 Height: Bucket Pin	3853 mm	12'7"	3765 mm	12'4"	3907 mm	12'9"	3969 mm	13'0"
** 13 Height: Overall	4997 mm	16'4"	4909 mm	16'1"	5122 mm	16'9"	5242 mm	17'2"
* 14 Reach: Bucket at 45°	950 mm	3'1"	1016 mm	3'4"	1033 mm	3'4"	1108 mm	3'7"
15 Carry Height: Bucket Pin	447 mm	1'5"	457 mm	1'5"	458 mm	1'6"	467 mm	1'6"
** 16 Dig Depth	100 mm	3.9"	188 mm	7.4"	100 mm	3.9"	100 mm	3.9"
17 Width: Bucket	2550 mm	8'4"	2550 mm	8'4"	2550 mm	8'4"	2750 mm	9'0"
18 Width: Tread Center	1933 mm	6'4"	1943 mm	6'4"	1930 mm	6'3"	2083 mm	6'10"
19 Turning Radius: Over Bucket	5903 mm	19'4"	5920 mm	19'5"	5933 mm	19'5"	6117 mm	20'0"
20 Width: Over Tires	2543 mm	8'4"	2484 mm	8'1"	2540 mm	8'4"	2693 mm	8'10"
21 Turning Radius: Outside of Tires	5404 mm	17'8"	5404 mm	17'8"	5402 mm	17'8"	5546 mm	18'2"
22 Turning Radius: Inside of Tires	2850 mm	9'4"	2850 mm	9'4"	2851 mm	9'4"	2843 mm	9'3"
23 Rack Angle at Full Lift	53°		53°		54°		54°	
24 Dump Angle at Full Lift	50°		50°		49°		49°	
25 Rack Angle at Carry	43°		46°		45°		45°	
26 Departure Angle	33°		33°		33°		33°	
27 Articulation Angle	40°		40°		40°		40°	
Tires	20.5 XHA2 L3		17.5 16PR L3		20.5 R25 L-3 XHA2		20.5 R25 L-3 XHA2	
Pressure in Front Tires	4.14 bar	60 psi	4.14 bar	60 psi	4.14 bar	60 psi	4.14 bar	60 psi
Pressure in Rear Tires	2.76 bar	40 psi	2.76 bar	40 psi	2.76 bar	40 psi	2.76 bar	40 psi

Dimensions listed are for a machine configured heavy counterweights, 80 kg (176 lb) operator, and Michelin 20.5 R25 (L-3) XHA2 tires. (Goodyear 17.5 16PR on 924K in second column). Bucket volumes above are as follows, each with bolt-on cutting edges on a Performance Series PO bucket: 924K with 1.9 m³ (2.5 yd³), 930K with 2.1 m³ (2.7 yd³), 938K with 2.5 m³ (3.3 yd³).

924K, 930K, 938K Wheel Loader Specifications

Dimensions with Bucket

All dimensions are approximate. Dimensions will vary with bucket, and tire choice. Refer to Operating Specifications with Buckets.



*Vary with bucket.

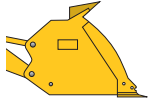
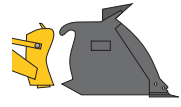
**Vary with tire.

	High Lift			
	930K		938K	
** 1 Height: Ground to Cab	3340	10'11"	3340	10'11"
** 2 Height: Ground to Beacon	3707	12'1"	3707	12'1"
** 3 Height: Ground Axle Center	685	2'2"	685	2'2"
** 4 Height: Ground Clearance	397	1'3"	386	1'3"
* 5 Length: Overall	8282	27'2"	8344	27'4"
6 Length: Rear Axle to Bumper	1993	6'6"	1968	6'5"
7 Length: Hitch to Front Axle	1500	4'11"	1525	5'0"
8 Length: Wheel Base	3000	9'10"	3050	10'0"
* 9 Clearance: Bucket at 45°	3448	11'3"	3450	11'3"
** 10 Clearance: Load over Height	3540	11'7"	3561	11'8"
** 11 Clearance: Level Bucket	4173	13'8"	4223	13'10"
** 12 Height: Bucket Pin	4500	14'9"	4550	14'11"
** 13 Height: Overall	5715	18'8"	5823	19'1"
* 14 Reach: Bucket at 45°	1353	4'5"	1374	4'6"
15 Carry Height: Bucket Pin	692	2'3"	686	2'2"
** 16 Dig Depth	135	5.3"	135	5.3"
17 Width: Bucket	2550	8'4"	2750	9'0"
18 Width: Tread Center	1930	6'3"	2083	6'10"
19 Turning Radius: Over Bucket	6315	20'8"	6472	21'2"
20 Width: Over Tires	2540	8'4"	2693	8'10"
21 Turning Radius: Outside of Tires	5402	17'8"	5546	18'2"
22 Turning Radius: Inside of Tires	2851	9'4"	2843	9'3"
23 Rack Angle at Full Lift	53°		53°	
24 Dump Angle at Full Lift	48°		47°	
25 Rack Angle at Carry	51°		50°	
26 Departure Angle	33°		33°	
27 Articulation Angle	40°		40°	
Tires	20.5R25L-3XHA2		20.5R25L-3XHA2	
Pressure in Front Tires	4.14 bar	60 psi	4.48 bar	65 psi
Pressure in Rear Tires	2.76 bar	40 psi	2.76 bar	40 psi

Dimensions listed are for a machine configured heavy counterweights, 80 kg (176 lb) operator, and Michelin 20.5 R25 (L-3) XHA2 tires. Bucket volumes above are as follows, each with bolt-on cutting edges on a Performance Series PO bucket: 930K with 2.1 m³ (2.7 yd³), 938K with 2.5 m³ (3.3 yd³).

Bucket Specifications

924K Operating Specifications with Buckets

		General Purpose						17.5 Tire*
		 Pin On			 Fusion			
Capacity – Rated	m ³	1.7	1.9	2.1	1.9	2.1	2.3	—
	yd ³	2.2	2.5	2.7	2.5	2.7	3.0	—
Capacity – Rated at 110% Fill Factor	m ³	1.9	2.1	2.3	2.1	2.3	2.5	—
	yd ³	2.5	2.7	3.0	2.7	3.0	3.3	—
17 Width: Bucket	mm	1275	2550	2550	2550	2550	2550	—
	ft/in	4'2"	8'4"	8'4"	8'4"	8'4"	8'4"	—
Nominal Material Density, 110% Fill Factor	kg/m ³	2095	1858	1668	1769	1584	1432	—
	lb/yd ³	3,464	3,169	2,831	3,019	2,688	2,419	—
9 Clearance: Full Lift, 45° Dump	mm	2915	2857	2801	2830	2773	2725	-86
	ft/in	9'6"	9'4"	9'2"	9'3"	9'1"	8'11"	-3.4"
14 Reach: Full Lift, 45° Dump	mm	882	950	990	982	1022	1059	+67
	ft/in	2'10"	3'1"	3'2"	3'2"	3'4"	3'5"	+2.6"
Reach: 2130 mm (7'0") Clearance, 45° Dump	mm	1440	1480	1492	1499	1509	1520	+23
	ft/in	4'8"	4'10"	4'10"	4'11"	4'11"	4'11"	+0.9"
Reach: Level Arm, Level Bucket	mm	2142	2231	2303	2273	2345	2408	+67
	ft/in	7'0"	7'3"	7'6"	7'5"	7'8"	7'10"	+2.6"
16 Dig Depth	mm	100	100	100	100	100	100	+86
	in	3.9"	3.9"	3.9"	3.9"	3.9"	3.9"	+3.4"
5 Length: Overall	mm	7284	7374	7446	7416	7488	7551	+67
	ft/in	23'10"	24'2"	24'5"	24'3"	24'6"	24'9"	+2.6"
13 Height: Overall	mm	5002	4997	5068	5022	5093	5151	-86
	ft/in	16'4"	16'4"	16'7"	16'5"	16'8"	16'10"	-3.4"
19 Turning Radius: Bucket at Carry	mm	5297	5903	5925	5917	5939	5958	+17
	ft/in	17'4"	19'4"	19'5"	19'4"	19'5"	19'6"	+0.7"
Tipping Load – Straight, ISO 14397-1*	kg	9153	9053	8990	8661	8577	8497	-250
	lb	20,174	19,952	19,813	19,089	18,903	18,728	-550
Tipping Load – Straight, Rigid Tire**	kg	9535	9430	9364	9022	8934	8851	-260
	lb	21,014	20,783	20,638	19,885	19,691	19,508	-573
Tipping Load – Full Turn, ISO 14397-1*	kg	7858	7765	7708	7396	7318	7245	-216
	lb	17,319	17,113	16,987	16,300	16,128	15,966	-476
Tipping Load – Full Turn, Rigid Tire**	kg	8360	8260	8199	7868	7785	7707	-230
	lb	18,425	18,205	18,071	17,340	17,157	16,986	-506
Breakout Force	kg	12,273	10,342	9645	9899	9243	8730	+47
	lb	27,048	22,794	21,258	21,817	20,371	19,240	+103
Operating Weight	kg	11,966	12,019	12,038	12,374	12,418	12,455	-366
	lb	26,373	26,490	26,532	27,271	27,368	27,451	-806

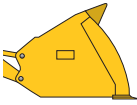
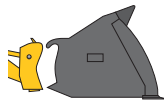
*Full compliance to ISO 14397-1 (2007) Sections 1 thru 6, which requires 2% verification between calculation and testing.

**Compliance to ISO 14397-1 (2007) Sections 1 thru 5.

Dimensions listed are for a 924K configured with buckets, bolt-on cutting edges, heavy counterweights, additional guarding, 80 kg (176 lb) operator, and Michelin 20.5 R25 (L-3) XHA2 tires at a pressure of 4.14 bar (60 psi) in the front tires and 2.76 bar (40 psi) in the rear tires. 17.5R25 16-PR Goodyear HRL assumed for delta values.

Bucket Specifications

924K Operating Specifications with Buckets

		Light Material						17.5 Tire*
		 Pin On			 Fusion			
Capacity – Rated	m ³	3.5	3.8	4.2	3.5	3.8	4.2	—
	yd ³	4.6	5.0	5.5	4.6	5.0	5.5	—
Capacity – Rated at 110% Fill Factor	m ³	3.9	4.2	4.6	3.9	4.2	4.6	—
	yd ³	5.0	5.5	6.0	5.0	5.5	6.0	—
17 Width: Bucket	mm	2750	2750	2750	2750	2750	2750	—
	ft/in	9'0"	9'0"	9'0"	9'0"	9'0"	9'0"	—
Nominal Material Density, 110% Fill Factor	kg/m ³	934	845	752	887	802	714	—
	lb/yd ³	1,586	1,416	1,277	1,506	1,344	1,211	—
9 Clearance: Full Lift, 45° Dump	mm	2575	2517	2455	2545	2488	2425	-86
	ft/in	8'5"	8'3"	8'0"	8'4"	8'1"	7'11"	-3.4"
14 Reach: Full Lift, 45° Dump	mm	1094	1151	1214	1124	1181	1244	+67
	ft/in	3'7"	3'9"	3'11"	3'8"	3'10"	4'0"	+3"
Reach: 2130 mm (7'0") Clearance, 45° Dump	mm	1463	1481	1499	1473	1490	1506	8
	ft/in	4'9"	4'10"	4'11"	4'9"	4'10"	4'11"	+0.3"
Reach: Level Arm, Level Bucket	mm	2556	2638	2726	2598	2680	2768	+67
	ft/in	8'4"	8'7"	8'11"	8'6"	8'9"	9'0"	+2.6"
16 Dig Depth	mm	100	100	100	100	100	100	+86
	in	3.9"	3.9"	3.9"	3.9"	3.9"	3.9"	+3.4"
5 Length: Overall	mm	7699	7780	7869	7741	7822	7911	+67
	ft/in	25'3"	25'6"	25'9"	25'4"	25'7"	25'11"	+2.6"
13 Height: Overall	mm	5229	5302	5390	5254	5328	5417	-86
	ft/in	17'1"	17'4"	17'8"	17'2"	17'5"	17'9"	-3.4"
19 Turning Radius: Bucket at Carry	mm	6094	6120	6148	6108	6134	6163	13
	ft/in	19'11"	20'0"	20'2"	20'0"	20'1"	20'2"	0.51"
Tipping Load – Straight, ISO 14397-1*	kg	8444	8302	8179	8060	7922	7802	-244
	lb	18,610	18,298	18,026	17,764	17,460	17,195	-537
Tipping Load – Straight, Rigid Tire**	kg	8796	8648	8520	8396	8252	8127	-254
	lb	19,386	19,060	18,777	18,504	18,187	17,911	-559
Tipping Load – Full Turn, ISO 14397-1*	kg	7195	7065	6951	6833	6707	6596	-211
	lb	15,858	15,572	15,321	15,059	14,781	14,536	-464
Tipping Load – Full Turn, Rigid Tire**	kg	7654	7516	7395	7269	7135	7017	-224
	lb	16,870	16,566	16,298	16,020	15,725	15,464	-494
Breakout Force	kg	7627	7507	6664	7354	7238	6443	+36
	lb	16,810	16,545	14,688	16,208	15,951	14,199	+79
Operating Weight	kg	12 415	12 481	12 545	12 778	12 844	12 908	-366
	lb	27,363	27,508	27,649	28,163	28,308	28,449	-807

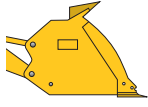
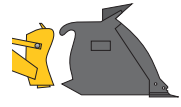
*Full compliance to ISO 14397-1 (2007) Sections 1 thru 6, which requires 2% verification between calculation and testing.

**Compliance to ISO 14397-1 (2007) Sections 1 thru 5.

Dimensions listed are for a 924K configured with buckets, bolt-on cutting edges, heavy counterweights, additional guarding, 80 kg (176 lb) operator, and Michelin 20.5 R25 (L-3) XHA2 tires at a pressure of 4.14 bar (60 psi) in the front tires and 2.76 bar (40 psi) in the rear tires. 17.5R25 16-PR Goodyear HRL assumed for delta values.

Bucket Specifications

930K Operating Specifications with Buckets

		General Purpose						High Lift
		 Pin On			 Fusion			
Capacity – Rated	m ³	2.1	2.3	2.5	2.1	2.3	2.5	—
	yd ³	2.7	3.0	3.3	2.7	3.0	3.3	—
Capacity – Rated at 110% Fill Factor	m ³	2.3	2.5	2.8	2.3	2.5	2.8	—
	yd ³	3.0	3.3	3.6	3.0	3.3	3.6	—
17 Width: Bucket	mm	2550	2550	2550	2550	2550	2550	—
	ft/in	8'4"	8'4"	8'4"	8'4"	8'4"	8'4"	—
Nominal Material Density, 110% Fill Factor	kg/m ³	1833	1654	1498	1747	1580	1433	—
	lb/yd ³	3,111	2,794	2,522	2,965	2,669	2,413	—
9 Clearance: Full Lift, 45° Dump	mm	2855	2807	2761	2828	2779	2733	+593
	ft/in	9'4"	9'2"	9'0"	9'3"	9'1"	8'11"	+1'11"
14 Reach: Full Lift, 45° Dump	mm	1033	1070	1109	1064	1102	1140	+320
	ft/in	3'4"	3'6"	3'7"	3'5"	3'7"	3'8"	+13"
Reach: 2130 mm (7'0") Clearance, 45° Dump	mm	1560	1573	1587	1578	1590	1603	+717
	ft/in	5'1"	5'1"	5'2"	5'2"	5'2"	5'3"	+2'4"
Reach: Level Arm, Level Bucket	mm	2350	2413	2475	2392	2455	2517	+653
	ft/in	7'8"	7'11"	8'1"	7'10"	8'0"	8'3"	+2'1"
16 Dig Depth	mm	100	100	100	100	100	100	+35
	in	3.9"	3.9"	3.9"	3.9"	3.9"	3.9"	+1.4"
5 Length: Overall	mm	7488	7551	7613	7530	7593	7655	+794
	ft/in	24'6"	24'9"	24'11"	24'8"	24'10"	25'1"	+2'7"
13 Height: Overall	mm	5122	5180	5239	5147	5205	5264	+593
	ft/in	16'9"	16'11"	17'2"	16'10"	17'0"	17'3"	+1'11"
19 Turning Radius: Bucket at Carry	mm	5933	5951	5970	5946	5964	5983	+384
	ft/in	19'5"	19'6"	19'7"	19'6"	19'6"	19'7"	+1'3"
Tipping Load – Straight, ISO 14397-1*	kg	9901	9791	9654	9477	9393	9275	-2715
	lb	21,821	21,578	21,277	20,887	20,703	20,442	-5,984
Tipping Load – Straight, Rigid Tire**	kg	10 313	10 199	10 056	9872	9785	9661	-2829
	lb	22,730	22,478	22,164	21,758	21,565	21,293	-6,234
Tipping Load – Full Turn, ISO 14397-1*	kg	8470	8368	8239	8071	7994	7883	-2379
	lb	18,667	18,442	18,158	17,787	17,618	17,374	-5,243
Tipping Load – Full Turn, Rigid Tire**	kg	9010	8902	8765	8586	8504	8387	-2531
	lb	19,858	19,619	19,317	18,923	18,743	18,483	-5,578
Breakout Force	kg	12 891	12 158	11 488	12 371	11 698	11 080	-299
	lb	28,411	26,796	25,318	27,266	25,783	24,420	-658
Operating Weight	kg	13 150	13 214	13 312	13 529	13 567	13 650	+232
	lb	28,982	29,122	29,340	29,818	29,901	30,083	+511

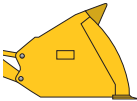
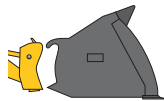
*Full compliance to ISO 14397-1 (2007) Sections 1 thru 6, which requires 2% verification between calculation and testing.

**Compliance to ISO 14397-1 (2007) Sections 1 thru 5.

Dimensions listed are for a 930K configured with buckets, bolt-on cutting edges, heavy counterweights, additional guarding, 80 kg (176 lb) operator, and Michelin 20.5 R25 (L-3) XHA2 tires at a pressure of 4.14 bar (60 psi) in the front tires and 2.76 bar (40 psi) in the rear tires.

Bucket Specifications

930K Operating Specifications with Buckets

		Light Material						High Lift
		 Pin On			 Fusion			
Capacity – Rated	m ³	3.5	3.8	4.2	3.5	3.8	4.2	—
	yd ³	4.6	5.0	5.5	4.6	5.0	5.5	—
Capacity – Rated at 110% Fill Factor	m ³	3.9	4.2	4.6	3.9	4.2	4.6	—
	yd ³	5.0	5.5	6.0	5.0	5.5	6.0	—
17 Width: Bucket	mm	2750	2750	2750	2750	2750	2750	—
	ft/in	9'0"	9'0"	9'0"	9'0"	9'0"	9'0"	—
Nominal Material Density, 110% Fill Factor	kg/m ³	1031	934	832	983	890	792	—
	lb/yd ³	1,750	1,564	1,412	1,668	1,490	1,345	—
9 Clearance: Full Lift, 45° Dump	mm	2631	2573	2510	2600	2543	2480	+607
	ft/in	8'7"	8'5"	8'2"	8'6"	8'4"	8'1"	+1'11"
14 Reach: Full Lift, 45° Dump	mm	1138	1196	1259	1167	1225	1287	+342
	ft/in	3'8"	3'11"	4'1"	3'9"	4'0"	4'2"	+13"
Reach: 2130 mm (7'0") Clearance, 45° Dump	mm	1538	1559	1579	1549	1569	1588	+746
	ft/in	5'0"	5'1"	5'2"	5'0"	5'1"	5'2"	+2'5"
Reach: Level Arm, Level Bucket	mm	2603	2685	2773	2645	2726	2815	+653
	ft/in	8'6"	8'9"	9'1"	8'8"	8'11"	9'2"	+2'1"
16 Dig Depth	mm	100	100	100	100	100	100	+35
	in	3.9"	3.9"	3.9"	3.9"	3.9"	3.9"	+1.4"
5 Length: Overall	mm	7741	7823	7911	7783	7865	7953	+794
	ft/in	25'4"	25'7"	25'11"	25'6"	25'9"	26'1"	+2'7"
13 Height: Overall	mm	5284	5356	5445	5309	5383	5471	+593
	ft/in	17'4"	17'6"	17'10"	17'5"	17'7"	17'11"	+1'11"
19 Turning Radius: Bucket at Carry	mm	6099	6124	6152	6112	6138	6166	+386
	ft/in	20'0"	20'1"	20'2"	20'0"	20'1"	20'2"	+1'3"
Tipping Load – Straight, ISO 14397-1*	kg	9336	9187	9058	8941	8797	8671	-2610
	lb	20,576	20,248	19,964	19,706	19,387	19,110	-5,752
Tipping Load – Straight, Rigid Tire**	kg	9725	9570	9436	9314	9163	9032	-2719
	lb	21,434	21,092	20,796	20,527	20,195	19,906	-5,991
Tipping Load – Full Turn, ISO 14397-1*	kg	7941	7806	7687	7570	7438	7322	-2290
	lb	17,502	17,204	16,942	16,684	16,393	16,138	-5,046
Tipping Load – Full Turn, Rigid Tire**	kg	8448	8304	8178	8053	7913	7790	-2436
	lb	18,620	18,302	18,024	17,749	17,440	17,168	-5,368
Breakout Force	kg	10 278	10 140	9024	9926	9792	8740	-250
	lb	22,652	22,347	19,889	21,877	21,582	19,262	-551
Operating Weight	kg	13 527	13 593	13 657	13 890	13 956	14 020	+232
	lb	29,813	29,958	30,099	30,613	30,758	30,899	+511

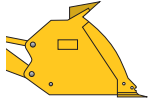
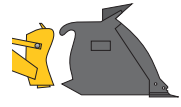
*Full compliance to ISO 14397-1 (2007) Sections 1 thru 6, which requires 2% verification between calculation and testing.

**Compliance to ISO 14397-1 (2007) Sections 1 thru 5.

Dimensions listed are for a 930K configured with buckets, bolt-on cutting edges, heavy counterweights, additional guarding, 80 kg (176 lb) operator, and Michelin 20.5 R25 (L-3) XHA2 tires at a pressure of 4.14 bar (60 psi) in the front tires and 2.76 bar (40 psi) in the rear tires.

Bucket Specifications

938K Operating Specifications with Buckets

		General Purpose						High Lift
		 Pin On			 Fusion			
Capacity – Rated	m ³	2.5	2.7	2.9	2.5	2.7	2.9	—
	yd ³	3.3	3.5	3.8	3.3	3.5	3.8	—
Capacity – Rated at 110% Fill Factor	m ³	2.8	3.0	3.2	2.8	3.0	3.2	—
	yd ³	3.6	3.9	4.2	3.6	3.9	4.2	—
17 Width: Bucket	mm	2750	2750	2750	2750	2750	2750	—
	ft/in	9'0"	9'0"	9'0"	9'0"	9'0"	9'0"	—
Nominal Material Density, 110% Fill Factor	kg/m ³	1832	1681	1554	1744	1600	1479	—
	lb/yd ³	3,084	2,822	2,601	2,936	2,686	2,475	—
9 Clearance: Full Lift, 45° Dump	mm	2869	2822	2786	2834	2787	2751	+581
	ft/in	9'4"	9'3"	9'1"	9'3"	9'1"	9'0"	+1'10"
14 Reach: Full Lift, 45° Dump	mm	1108	1146	1178	1146	1185	1216	+267
	ft/in	3'7"	3'9"	3'10"	3'9"	3'10"	3'11"	+11"
Reach: 2130 mm (7'0") Clearance, 45° Dump	mm	1637	1652	1664	1658	1672	1684	+666
	ft/in	5'4"	5'5"	5'5"	5'5"	5'5"	5'6"	+2'2"
Reach: Level Arm, Level Bucket	mm	2452	2514	2563	2504	2566	2615	+607
	ft/in	8'0"	8'2"	8'4"	8'2"	8'5"	8'6"	+1'11"
16 Dig Depth	mm	100	100	100	101	101	101	+35
	in	3.9"	3.9"	3.9"	4"	4"	4"	+1.4"
5 Length: Overall	mm	7604	7666	7715	7656	7718	7767	+740
	ft/in	24'11"	25'1"	25'3"	25'1"	25'3"	25'5"	+2'5"
13 Height: Overall	mm	5242	5301	5348	5273	5332	5379	+581
	ft/in	17'2"	17'4"	17'6"	17'3"	17'5"	17'7"	+1'10"
19 Turning Radius: Bucket at Carry	mm	6117	6136	6150	6134	6152	6167	+357
	ft/in	20'0"	20'1"	20'2"	20'1"	20'2"	20'2"	+1'2"
Tipping Load – Straight, ISO 14397-1*	kg	11 831	11 733	11 651	11 314	11 218	11 139	-3167
	lb	26,074	25,860	25,679	24,935	24,723	24,549	-6,979
Tipping Load – Straight, Rigid Tire**	kg	12 323	12 222	12 137	11 785	11 685	11 603	-3299
	lb	27,160	26,937	26,749	25,974	25,753	25,572	-7,270
Tipping Load – Full Turn, ISO 14397-1*	kg	10 076	9986	9912	9593	9505	9433	-2745
	lb	22,206	22,010	21,845	21,142	20,948	20,790	-6,050
Tipping Load – Full Turn, Rigid Tire**	kg	10 719	10 624	10 544	10 205	10 112	10 035	-2920
	lb	23,624	23,414	23,239	22,492	22,285	22,117	-6,436
Breakout Force	kg	13 813	13 082	12 552	13 170	12 498	12 009	-502
	lb	30,442	28,833	27,665	29,027	27,546	26,467	-1,106
Operating Weight	kg	15 465	15 510	15 547	15 892	15 936	15 972	+218
	lb	34,085	34,184	34,264	35,025	35,122	35,202	+480

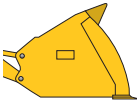
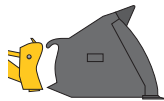
*Full compliance to ISO 14397-1 (2007) Sections 1 thru 6, which requires 2% verification between calculation and testing.

**Compliance to ISO 14397-1 (2007) Sections 1 thru 5.

Dimensions listed are for a 938K configured with buckets, bolt-on cutting edges, heavy counterweights, additional guarding, 80 kg (176 lb) operator, and Michelin 20.5 R25 (L-3) XHA2 tires at a pressure of 4.14 bar (60 psi) in the front tires and 2.76 bar (40 psi) in the rear tires.

Bucket Specifications

938K Operating Specifications with Buckets

		Light Material						High Lift
		 Pin On			 Fusion			
Capacity – Rated	m ³	3.8	4.2	5.0	3.8	4.2	5.0	—
	yd ³	5.0	5.5	6.5	5.0	5.5	6.5	—
Capacity – Rated at 110% Fill Factor	m ³	4.2	4.6	5.5	4.2	4.6	5.5	—
	yd ³	5.5	6.0	7.2	5.5	6.0	7.2	—
17 Width: Bucket	mm	2747	2750	2750	2750	2750	2750	—
	ft/in	9'0"	9'0"	9'0"	9'0"	9'0"	9'0"	—
Nominal Material Density, 110% Fill Factor	kg/m ³	1150	1025	860	1094	976	817	—
	lb/yd ³	1,926	1,739	1,448	1,832	1,657	1,376	—
9 Clearance: Full Lift, 45° Dump	mm	2633	2571	2571	2596	2534	2534	+598
	ft/in	8'7"	8'5"	8'5"	8'6"	8'3"	8'3"	+1'11"
14 Reach: Full Lift, 45° Dump	mm	1232	1294	1294	1268	1331	1331	+292
	ft/in	4'0"	4'2"	4'2"	4'1"	4'4"	4'4"	+11"
Reach: 2130 mm (7'0") Clearance, 45° Dump	mm	1631	1654	1654	1644	1666	1666	+695
	ft/in	5'4"	5'5"	5'5"	5'4"	5'5"	5'5"	+2'3"
Reach: Level Arm, Level Bucket	mm	2723	2812	2812	2775	2864	2864	+607
	ft/in	8'11"	9'2"	9'2"	9'1"	9'4"	9'4"	+1'11"
16 Dig Depth	mm	100	100	100	101	101	101	+35
	in	3.9"	3.9"	3.9"	4"	4"	4"	+1.4"
5 Length: Overall	mm	7875	7964	7964	7928	8016	8016	+740
	ft/in	25'10"	26'1"	26'1"	26'0"	26'3"	26'3"	+2'5"
13 Height: Overall	mm	5418	5507	5786	5450	5539	5820	+581
	ft/in	17'9"	18'0"	18'11"	17'10"	18'2"	19'1"	+1'10"
19 Turning Radius: Bucket at Carry	mm	6198	6227	6227	6216	6244	6244	+365
	ft/in	20'4"	20'5"	20'5"	20'4"	20'5"	20'5"	+1'2"
Tipping Load – Straight, ISO 14397-1*	kg	11 292	11 138	11 136	10 794	10 659	10 628	-3018
	lb	24,888	24,547	24,544	23,790	23,492	23,423	-6,651
Tipping Load – Straight, Rigid Tire**	kg	11 763	11 602	11 600	11 244	11 103	11 070	-3144
	lb	25,925	25,570	25,567	24,781	24,471	24,399	-6,928
Tipping Load – Full Turn, ISO 14397-1*	kg	9583	9440	9436	9117	8994	8960	-2619
	lb	21,120	20,806	20,796	20,094	19,822	19,747	-5,772
Tipping Load – Full Turn, Rigid Tire**	kg	10 195	10 043	10 038	9699	9568	9532	-2786
	lb	22,468	22,134	22,123	21,377	21,087	21,007	-6,141
Breakout Force	kg	11 603	10 331	10 292	11 122	9942	9888	-437
	lb	25,573	22,768	22,684	24,512	21,912	21,792	-963
Operating Weight	kg	15 735	15 811	15 858	16 158	16 222	16 299	+218
	lb	34,679	34,848	34,951	35,611	35,752	35,923	+480

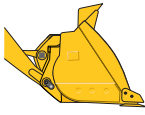
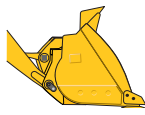
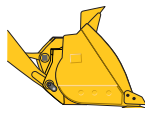
*Full compliance to ISO 14397-1 (2007) Sections 1 thru 6, which requires 2% verification between calculation and testing.

**Compliance to ISO 14397-1 (2007) Sections 1 thru 5.

Dimensions listed are for a 938K configured with buckets, bolt-on cutting edges, heavy counterweights, additional guarding, 80 kg (176 lb) operator, and Michelin 20.5 R25 (L-3) XHA2 tires at a pressure of 4.14 bar (60 psi) in the front tires and 2.76 bar (40 psi) in the rear tires.

Bucket Specifications

Operating Specifications with Buckets

		Pin On Sand and Gravel				
		 924K	 930K	 938K		
Capacity – Rated	m ³	2.5	2.5	2.7	2.9	3.2
	yd ³	3.3	3.3	3.5	3.8	4.2
Capacity – Rated at 110% Fill Factor	m ³	2.8	2.8	3.0	3.2	3.5
	yd ³	3.6	3.6	3.9	4.2	4.6
17 Width: Bucket	mm	2750	2750	2750	2750.01	2750
	ft/in	9'0"	9'0"	9'0"	9'0"	9'0"
Nominal Material Density, 110% Fill Factor	kg/m ³	1366	1596	1456	1627	1473
	lb/yd ³	2,540	2,933	2,724	3,010	2,721
9 Clearance: Full Lift, 45° Dump	mm	2753	2807	2761	2822	2786
	ft/in	9'0"	9'2"	9'0"	9'3"	9'1"
14 Reach: Full Lift, 45° Dump	mm	1028	1070	1109	1146	1178
	ft/in	3'4"	3'6"	3'7"	3'9"	3'10"
Reach: 2130 mm (7'0") Clearance, 45° Dump	mm	1504	1573	1587	1652	1664
	ft/in	4'11"	5'1"	5'2"	5'5"	5'5"
Reach: Level Arm, Level Bucket	mm	2366	2413	2475	2514	2563
	ft/in	7'9"	7'11"	8'1"	8'2"	8'4"
16 Dig Depth	mm	100	100	100	100	100
	in	3.9"	3.9"	3.9"	3.9"	3.9"
5 Length: Overall	mm	7509	7551	7613	7666	7715
	ft/in	24'7"	24'9"	24'11"	25'1"	25'3"
13 Height: Overall	mm	5126	5180	5239	5301	5411
	ft/in	16'9"	16'11"	17'2"	17'4"	17'9"
19 Turning Radius: Bucket at Carry	mm	6035	6042	6060	6136	6150
	ft/in	19'9"	19'9"	19'10"	20'1"	20'2"
Tipping Load – Straight, ISO 14397-1*	kg	8890	10 288	10 149	12 197	12 188
	lb	19,599	22,680	22,373	26,889	26,869
Tipping Load – Straight, Rigid Tire**	kg	9261	10 717	10 571	12 705	12 696
	lb	20,416	23,625	23,306	28,009	27,988
Tipping Load – Full Turn, ISO 14397-1*	kg	7606	8780	8649	10 377	10 367
	lb	16,767	19,357	19,068	22,878	22,855
Tipping Load – Full Turn, Rigid Tire**	kg	8091	9341	9202	11 040	11 029
	lb	17,837	20,593	20,285	24,338	24,313
Breakout Force	kg	9027	12 101	11 430	19 040	12 521
	lb	19,900	26,677	25,199	41,974	27,603
Operating Weight	kg	12 359	13 769	13 860	15 994	16 024
	lb	27,247	30,355	30,555	35,261	35,326

*Full compliance to ISO 14397-1 (2007) Sections 1 thru 6, which requires 2% verification between calculation and testing.

**Compliance to ISO 14397-1 (2007) Sections 1 thru 5.

Dimensions listed are for machines configured with pin on buckets, bolt-on cutting edges, heavy (924K) or logger (930K and 938K) counterweights, additional guarding, 80 kg (176 lb) operator, and Michelin 20.5 R25 (L-3) XHA2 tires at a pressure of 4.14 bar (60 psi) in the front tires and 2.76 bar (40 psi) in the rear tires.

General Purpose Bucket Selection – Standard Lift

Material Type	Fill Factor %														Tip Load Full Turn*					
			105%	105%	110%	105%	105%	110%	105%	105%	110%	115%	110%	110%	115%	110%	2075 (3,496)	2150 (3,623)	kg	lb
	m ³	yd ³	Counter-weight	kg/m ³ lb/yd ³	1400 (2,359)	1475 (2,485)	1550 (2,612)	1625 (2,738)	1700 (2,865)	1775 (2,991)	1850 (3,117)	1925 (3,244)	2000 (3,370)	2075 (3,496)	2150 (3,623)					
924K	Pin On	1.7 (2.2)	Heavy	115%											110%	105%	7858	(17,324)		
			Standard	115%											110%	105%	7333	(16,166)		
		1.9 (2.5)	Heavy	115%											110%	105%	7765	(17,118)		
			Standard	115%											110%	105%	7242	(15,964)		
		2.1 (2.7)	Heavy	115%											110%	105%	7708	(16,992)		
			Standard	115%											110%	105%	7186	(15,843)		
	Fusion	1.9 (2.5)	Heavy	115%											110%	105%	7396	(16,305)		
			Standard	115%											110%	105%	6879	(15,166)		
		2.1 (2.7)	Heavy	115%											110%	105%	7318	(16,133)		
			Standard	115%											110%	105%	6804	(14,999)		
		2.3 (3.0)	Heavy	115%											110%	105%	7245	(15,971)		
			Standard	115%											110%	105%	6733	(14,842)		
930K	Pin On	2.1 (2.7)	Log/Agg	115%											110%	105%	100%	8891	(19,600)	
			Heavy	115%											110%	105%	100%	8470	(18,672)	
		2.3 (3.0)	Standard	115%											110%	105%	100%	7961	(17,551)	
			Log/Agg	115%											110%	105%	100%	8787	(19,371)	
		2.5 (3.3)	Heavy	115%											110%	105%	100%	8368	(18,447)	
			Standard	115%											110%	105%	100%	7861	(17,331)	
	Fusion	2.1 (2.7)	Log/Agg	115%											110%	105%	100%	8486	(18,708)	
			Heavy	115%											110%	105%	100%	8071	(17,792)	
		2.3 (3.0)	Log/Agg	115%											110%	105%	100%	8408	(18,535)	
			Heavy	115%											110%	105%	100%	7994	(17,623)	
		2.5 (3.3)	Log/Agg	115%											110%	105%	100%	8295	(18,287)	
			Heavy	115%											110%	105%	100%	7883	(17,379)	
938K	Pin On	2.5 (3.3)	Log/Agg	115%											110%	105%	100%	10 513	(23,176)	
			Heavy	115%											110%	105%	100%	10 105	(22,276)	
		2.7 (3.5)	Standard	115%											110%	105%	100%	9603	(21,170)	
			Log/Agg	115%											110%	105%	100%	10 422	(22,976)	
		2.9 (3.8)	Heavy	115%											110%	105%	100%	10 015	(22,079)	
			Standard	115%											110%	105%	100%	9515	(20,977)	
	Fusion	2.5 (3.3)	Log/Agg	115%											110%	105%	100%	10 346	(22,808)	
			Heavy	115%											110%	105%	100%	9940	(21,914)	
		2.7 (3.5)	Log/Agg	115%											110%	105%	100%	9942	(20,816)	
			Heavy	115%											110%	105%	100%	9442	(20,816)	
		2.9 (3.8)	Log/Agg	115%											110%	105%	100%	10 023	(22,097)	
			Heavy	115%											110%	105%	100%	9621	(21,211)	

Material density, fill factor, and counterweight options are key variables when choosing the appropriate size of the bucket. The long floor and open throat design of the Performance Series Buckets along with the aggressive rack angles of the optimized linkage will demonstrate fill factors greater than 100% ISO rated. Refer to the expected fill factor % per material type at the top of the table and find a matching counterweight and fill factor along the side for proper bucket sizing.

*Full compliance to ISO 14397-1 (2007) Sections 1 thru 6, which requires 2% verification between calculation and testing.

Bucket Selection Tables

Light Material Bucket Selection – Standard Lift

Material Type		Fill Factor %													Tip Load Full Turn*					
		100%	110%	115%	110%	110%	110%	110%	105%	105%	110%	110%	110%	110%			110%	110%		
924K	Pin On	m ³	Counter-weight	kg/m ³ lb/yd ³	805 (1,356)	850 (1,432)	895 (1,508)	940 (1,584)	985 (1,660)	1030 (1,736)	1075 (1,811)	1120 (1,887)	1165 (1,963)	1210 (2,039)	1255 (2,115)	kg	lb			
		924K	Pin On	3.1 (4.1)	Heavy						115%	110%	105%	100%				7336	(16,173)	
Standard																	6822	(15,040)		
3.5 (4.6)	Heavy																	7195	(15,862)	
	Standard																	6685	(14,736)	
3.8 (5.0)	Heavy																	7065	(15,576)	
	Standard																	6559	(14,460)	
Fusion	3.1 (4.1)		Heavy														6999	(15,429)		
			Standard														6491	(14,310)		
	3.5 (4.6)		Heavy															6833	(15,063)	
			Standard															6329	(13,952)	
	3.8 (5.0)		Heavy															6707	(14,785)	
			Standard															6207	(13,683)	
930K	Pin On	3.5 (4.6)	Log/Agg													8354	(18,417)			
			Heavy														7941	(17,507)		
		3.8 (5.0)	Log/Agg															8215	(18,110)	
			Heavy															7806	(17,209)	
		4.2 (5.5)	Log/Agg															8094	(17,843)	
			Heavy															7687	(16,947)	
	Fusion	3.5 (4.6)	Log/Agg															7977	(17,586)	
			Heavy															7570	(16,688)	
		3.8 (5.0)	Log/Agg															7842	(17,288)	
			Heavy															7438	(16,398)	
		4.2 (5.5)	Log/Agg																7724	(17,027)
			Heavy																7322	(16,143)
938K	Pin On	3.8 (5.0)	Log/Agg														10 010	(22,068)		
			Heavy															9611	(21,188)	
		4.2 (5.5)	Log/Agg															9865	(21,749)	
			Heavy															9469	(20,874)	
		5.0 (6.5)	Log/Agg															9861	(21,740)	
			Heavy															9464	(20,864)	
	Fusion	3.8 (5.0)	Log/Agg															9538	(21,028)	
			Heavy															9145	(20,161)	
		4.2 (5.5)	Log/Agg															9412	(20,750)	
			Heavy															9021	(19,888)	
		5.0 (6.5)	Log/Agg															9379	(20,677)	
			Heavy															8988	(19,814)	

Material density, fill factor, and counterweight options are key variables when choosing the appropriate size of the bucket. The long floor and open throat design of the Performance Series Buckets along with the aggressive rack angles of the optimized linkage will demonstrate fill factors greater than 100% ISO rated. Refer to the expected fill factor % per material type at the top of the table and find a matching counterweight and fill factor along the side for proper bucket sizing.

*Full compliance to ISO 14397-1 (2007) Sections 1 thru 6, which requires 2% verification between calculation and testing.

General Purpose Bucket Selection – High Lift

Material Type		Fill Factor %														Tip Load Full Turn*			
		Fertilizer, Mixed		Coal Anthracite, Washed Peat, Wet		Coal Anthracite, Raw Earth, Loam, Dry		Coal Anthracite, Raw Earth, Loam, Dry Salt, Fine Heavy Metal Scrap, Loose		Shale		Sand, Dry and Loose Clay and Gravel, Dry		Clay, Natural Bed, Dry					
		m ³	yd ³	Counter-weight	kg/m ³ lb/yd ³	1030 (1,736)	1075 (1,811)	1120 (1,887)	1165 (1,963)	1210 (2,039)	1255 (2,115)	1300 (2,191)	1345 (2,266)	1390 (2,342)	1435 (2,418)	1480 (2,494)	kg	lb	
930K High Lift	Pin On	2.1 (2.7)	Log/Agg	Not Available														6072 (13,386)	5681 (12,523)
			Heavy	115% 110% 105% 100%															
			Standard	115% 110% 105% 100%															
		2.3 (3.0)	Log/Agg	Not Available														5988 (13,202)	5598 (12,342)
			Heavy	115% 110% 105% 100%															
			Standard	115% 110% 105% 100%															
	2.5 (3.3)	Log/Agg	Not Available														5876 (12,954)	5487 (12,096)	
		Heavy	115% 110% 105% 100%																
		Standard	110% 105% 100%																
	Fusion	2.1 (2.7)	Log/Agg	Not Available														5707 (12,580)	
			Heavy	115% 110% 105% 100%															
			Standard	115% 110% 105% 100%															
2.3 (3.0)		Log/Agg	Not Available														5648 (12,451)		
		Heavy	115% 110% 105% 100%																
		Standard	115% 110% 105% 100%																
2.5 (3.3)	Log/Agg	Not Available														5553 (12,241)			
	Heavy	110% 105% 100%																	
	Standard	110% 105% 100%																	
938K High Lift	Pin On	2.5 (3.3)	Log/Agg	Not Available														7312 (16,119)	7025 (15,487)
			Heavy	115% 110% 105% 100%															
			Standard	115% 110% 105% 100%															
		2.7 (3.5)	Log/Agg	Not Available														7241 (15,964)	6956 (15,335)
			Heavy	115% 110% 105% 100%															
			Standard	115% 110% 105% 100%															
	2.9 (3.8)	Log/Agg	Not Available														7183 (15,834)	6898 (15,207)	
		Heavy	115% 110% 105% 100%																
		Standard	115% 110% 105% 100%																
	Fusion	2.5 (3.3)	Log/Agg	Not Available														6880 (15,167)	
			Heavy	115% 110% 105% 100%															
			Standard	Not Available															
2.7 (3.5)		Log/Agg	Not Available														6810 (15,014)		
		Heavy	115% 110% 105% 100%																
		Standard	Not Available																
2.9 (3.8)	Log/Agg	Not Available														6754 (14,889)			
	Heavy	115% 110% 105% 100%																	
	Standard	Not Available																	

Material density, fill factor, and counterweight options are key variables when choosing the appropriate size of the bucket. The long floor and open throat design of the Performance Series Buckets along with the aggressive rack angles of the optimized linkage will demonstrate fill factors greater than 100% ISO rated. Refer to the expected fill factor % per material type at the top of the table and find a matching counterweight and fill factor along the side for proper bucket sizing.

*Full compliance to ISO 14397-1 (2007) Sections 1 thru 6, which requires 2% verification between calculation and testing.

Bucket Selection Tables

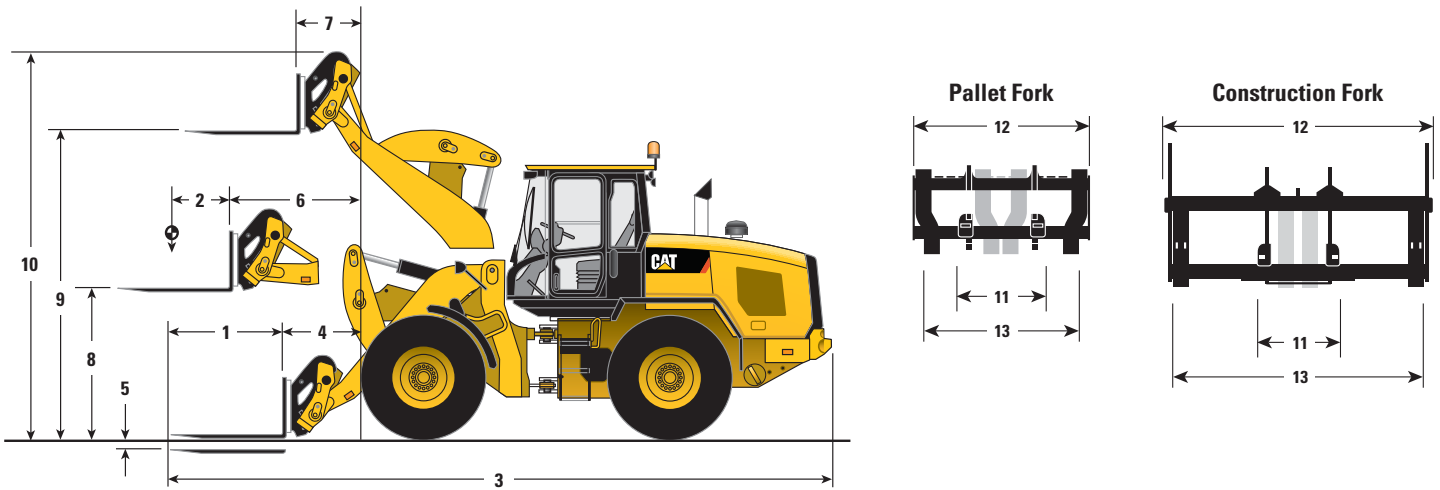
Light Material Bucket Selection – High Lift

Material Type		Fill Factor %														Tip Load Full Turn*			
		Mulch, Wet	Municipal Solid Waste	Flour, Wheat	Compacted Solid Waste	Barley, Bulk	Buckwheat, Bulk	Asphalt, Crushed	Soy Beans, Bulk	Corn Shelled, Bulk	Glass, Semi Crushed	Wheat, Bulk	Construction and Demolition Silage, Packed	Manure/Muck, Wet					
930K High Lift	Pin On	m ³	yd ³	Counter-weight	kg/m ³ lb/yd ³	550 (927)	580 (977)	610 (1,028)	640 (1,078)	670 (1,129)	700 (1,180)	730 (1,230)	760 (1,281)	790 (1,331)	820 (1,382)	850 (1,432)	kg	lb	
	930K High Lift	Pin On	3.5 (4.6)	Log/Agg	Not Available														5622
Heavy				115%															
Standard				110%															
3.8 (5.0)			Log/Agg	Not Available														5519	(12,166)
			Heavy	115%															
			Standard	110%															
4.2 (5.5)		Log/Agg	Not Available														5425	(11,960)	
		Heavy	115%																
		Standard	110%																
Fusion		3.5 (4.6)	Log/Agg	Not Available														5280	(11,640)
			Heavy	115%															
			Standard	110%															
	3.8 (5.0)	Log/Agg	Not Available														5179	(11,418)	
		Heavy	115%																
		Standard	110%																
4.2 (5.5)	Log/Agg	Not Available														5087	(11,215)		
	Heavy	110%																	
	Standard	105%																	
938K High Lift	Pin On	3.8 (5.0)	Log/Agg	Not Available														6918	(15,250)
			Heavy	115%															
			Standard	110%															
		4.2 (5.5)	Log/Agg	Not Available														6802	(14,996)
			Heavy	115%															
			Standard	110%															
	5.0 (6.5)	Log/Agg	Not Available														6784	(14,955)	
		Heavy	115%																
		Standard	110%																
	Fusion	3.8 (5.0)	Log/Agg	Not Available														6498	(14,326)
			Heavy	115%															
			Standard	110%															
4.2 (5.5)		Log/Agg	Not Available														6400	(14,109)	
		Heavy	115%																
		Standard	110%																
5.0 (6.5)	Log/Agg	Not Available														6353	(14,004)		
	Heavy	115%																	
	Standard	110%																	

Material density, fill factor, and counterweight options are key variables when choosing the appropriate size of the bucket. The long floor and open throat design of the Performance Series Buckets along with the aggressive rack angles of the optimized linkage will demonstrate fill factors greater than 100% ISO rated. Refer to the expected fill factor % per material type at the top of the table and find a matching counterweight and fill factor along the side for proper bucket sizing.

*Full compliance to ISO 14397-1 (2007) Sections 1 thru 6, which requires 2% verification between calculation and testing.

Operating Specifications with Forks



	Pallet Fork – Fusion						Construction Fork – Fusion					
	924K		930K		938K		924K		930K		938K	
	mm	ft/in	mm	ft/in	mm	ft/in	mm	ft/in	mm	ft/in	mm	ft/in
1 Fork Tine Length	1220	4'0"	1220	4'0"	1220	4'0"	1524	5'0"	1524	5'0"	1524	5'0"
2 Load Center	610	2'0"	610	2'0"	610	2'0"	762	2'6"	762	2'5"	762	2'6"
3 Length: Overall	7840	25'8"	7882	25'10"	7942	26'0"	8263	27'1"	8305	27'2"	8366	27'5"
4 Reach: Ground	891	2'11"	926	3'0"	961	3'1"	1009	3'3"	1045	3'5"	1081	3'6"
5 Dig Depth	47	1.9"	47	1.9"	44	1.7"	120	4.7"	120	4.7"	119	4.7"
6 Reach: Level Arm	1522	4'11"	1569	5'1"	1617	5'3"	1580	5'2"	1627	5'4"	1675	5'5"
7 Reach: Full Lift	724	2'4"	767	2'6"	814	2'8"	782	2'6"	825	2'8"	872	2'10"
8 Clearance: Level Arm	1761	5'9"	1792	5'10"	1830	6'0"	1698	5'6"	1729	5'8"	1766	5'9"
9 Clearance: Full Lift	3639	11'11"	3693	12'1"	3758	12'3"	3575	11'8"	3630	11'10"	3693	12'1"
10 Height: Overall	4621	15'1"	4676	15'4"	4740	15'6"	4880	16'0"	4935	16'2"	4998	16'4"
11 Minimum Fork Spacing	—	—	—	—	—	—	—	—	300	11"	300	11"
12 Carriage Width	—	—	—	—	—	—	—	—	1566	5'1"	2498	8'2"
13 Maximum Fork Spacing	—	—	—	—	—	—	—	—	1550	5'1"	2375	7'9"
	kg	lb	kg	lb	kg	lb	kg	lb	kg	lb	kg	lb
Tipping Load – Straight, ISO 14397-1*	6585	14,512	7315	16,122	8891	19,594	5883	12,966	6571	14,481	8047	17,734
Tipping Load – Full Turn, ISO 14397-1*	5643	12,437	6255	13,787	7580	16,705	5011	11,043	5587	12,313	6828	15,048
Operating Weight	12 032	26,518	13 144	28,968	15 396	33,932	12 366	27,255	13 478	29,705	15 730	34,669
Rated Load (% of Full Turn Tip):												
50% of Tip: SAE J1197**	2821	6,218	3128	6,893	3790	8,352	2505	5,521	2794	6,156	3414	7,524
60% of Tip: Rough Terrain EN474-3**	3386	7,462	3753	8,272	4548	10,023	3006	6,626	3352	7,388	4097	9,029
80% of Tip: Firm and Level EN474-3**	4514	9,949	5004	11,029	6064	13,364	4009	8,834	4470	9,851	5462	12,038

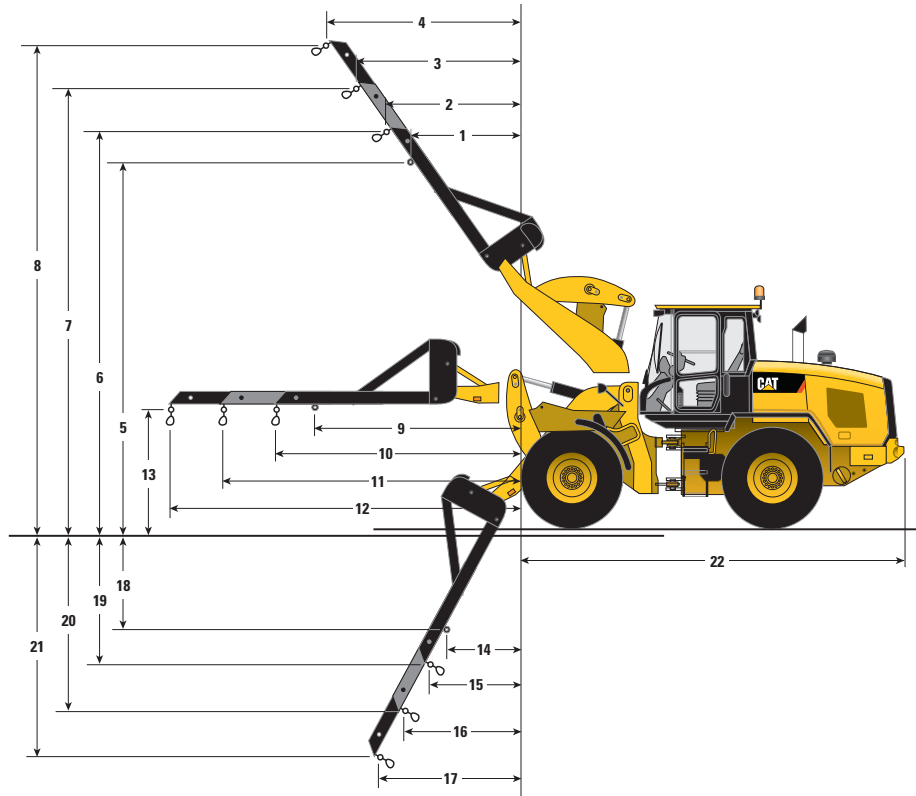
*Full compliance to ISO 14397-1 (2007) Sections 1 thru 6, which requires 2% verification between calculation and testing.

**Full compliance to EN474-3 and SAE J1197.

Note: Dimensions listed are for a machine configured with Fusion forks, heavy counterweight option, 80 kg (176 lb) operator, and Michelin 20.5 R25 (L-3) XHA2 tires.

Operating Specifications

Operating Specifications with Material Handling Arm



Material Handling Arm – Fusion

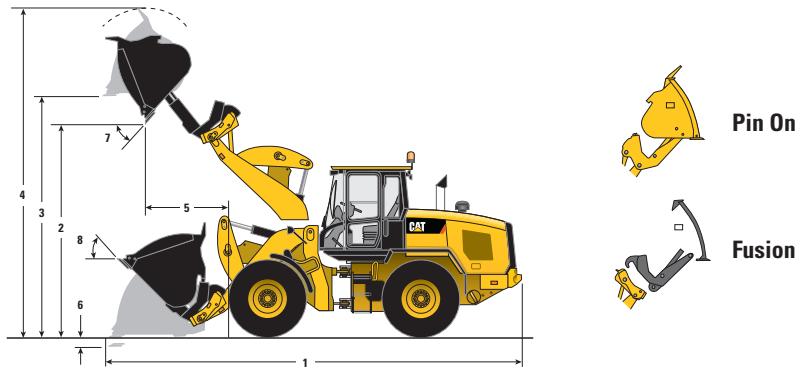
	924K		930K		938K			924K		930K		938K	
1	2087	6'10"	2113	6'11"	2144	7'0"	12	5280	17'3"	5327	17'5"	5376	17'7"
2	2311	7'6"	2333	7'7"	2362	7'8"	13	1823	5'11"	1854	6'0"	1890	6'2"
3	2904	9'6"	2919	9'6"	2943	9'7"	14	633	2'0"	863	2'9"	906	2'11"
4	3497	11'5"	3505	11'6"	3525	11'6"	15	785	2'6"	1045	3'5"	1089	3'6"
5	5180	16'11"	5257	17'2"	5343	17'6"	16	948	3'1"	1276	4'2"	1324	4'4"
6	5487	18'0"	5568	18'3"	5655	18'6"	17	1111	3'7"	1507	4'11"	1559	5'1"
7	6024	19'9"	6112	20'0"	6204	20'4"	18	2004	6'6"	1975	6'5"	1983	6'6"
8	6561	21'6"	6657	21'10"	6754	22'1"	19	2353	7'8"	2310	7'6"	2316	7'7"
9	3307	10'10"	3354	11'0"	3403	11'1"	20	3136	10'3"	3076	10'1"	3081	10'1"
10	3680	12'0"	3727	12'2"	3775	12'4"	21	3920	12'10"	3842	12'7"	3846	12'7"
11	4480	14'8"	4527	14'10"	4575	15'0"	22	5730	18'9"	5737	18'9"	5762	18'10"

	924K		930K		938K	
Operating Weight	11 950	26,344	13 061	28,795	15 263	33,649
Rated Load* (50% of Full Turn Tip** SAE J1197)						
Fixed Tab (9)	2021	4,454	2249	4,957	2726	6,009
Minimum Extension (10)	1850	4,079	2061	4,544	2501	5,514
Middle Extension (11)	1567	3,454	1748	3,854	2125	4,684
Maximum Extension (12)	1359	2,995	1518	3,346	1847	4,072

*Full compliance to ISO 14397-1 (2007) Sections 1 thru 6, which requires 2% verification between calculation and testing.

**Full compliance to EN474-3 and SAE J1197.

Operating Specifications with High Dump Buckets



		Pin On			Fusion			17.5 Tires	High Lift	
		924K	930K	938K	924K	930K	938K	924K	930K	938K
Rated Capacity	m ³	3.0	3.5	4.1	3.0	3.5	4.1	—	—	—
	yd ³	4.0	4.6	5.4	3.9	4.6	5.4	—	—	—
Capacity – Rated at 110% Fill Factor	m ³	3.3	3.9	4.5	3.3	3.9	4.5	—	—	—
	yd ³	4.4	5.0	5.9	4.3	5.0	5.9	—	—	—
Bucket Width	mm	2528	2728	3030	2528	2728	3032	—	—	—
	ft/in	8'3"	8'11"	9'11"	8'3"	8'11"	9'11"	—	—	—
Nominal Material Density 110% Fill Factor	kg/m ³	943	897	1016	935	867	875	—	—	—
	lb/yd ³	1572	1523	1712	1582	1471	1474	—	—	—
1 Length: Overall	mm	7872	7914	8044	7878	7986	8126	+67	+794	+737
	ft/in	25'9"	25'11"	26'4"	25'10"	26'2"	26'7"	+2.6"	+2'7"	+2'5"
2 Dump Clearance: Full Lift Rolled Out	mm	4184	4252	4264	4206	4332	4354	-86	+568	+545
	ft/in	13'8"	13'11"	13'11"	13'9"	14'2"	14'3"	-3.4"	+1'10"	+1'9"
3 Clearance: Level Bucket	mm	4526	4592	4647	4540	4609	4725	-86	+574	+553
	ft/in	14'10"	15'0"	15'2"	14'10"	15'1"	15'6"	-3.4"	+1'10"	+1'9"
4 Height: Overall	mm	6189	6298	6367	6203	6315	6446	-86	+574	+553
	ft/in	20'3"	20'7"	20'10"	20'4"	20'8"	21'1"	-3.4"	+1'10"	+1'9"
5 Reach: Full Lift Rolled Out	mm	1387	1425	1489	1383	1458	1530	+67	+329	+278
	ft/in	4'6"	4'8"	4'10"	4'6"	4'9"	5'0"	+2.6"	+1'0"	+0'10"
6 Dig Depth	mm	80	80	96	100	100	116	+86	+35	+35
	in	3.2"	3.2"	3.8"	3.9"	3.9"	4.6"	+3.4"	+1.4"	+1.4"
Turning Radius Bucket at Carry	mm	6067	6160	6296	6055	6166	6406	+11	+393	+366
	ft/in	19'10"	20'2"	20'7"	19'10"	20'2"	21'0"	+0.4"	+1'3"	+1'2"
7 Maximum Dump Angle	degree	52	52	51	50	49	49	—	—	—
8 Rack Angle at Carry	degree	40	43	55	43	45	46	—	—	—
Tipping Load – Straight ISO 14397-1*	kg	7435	8206	10 878	7343	7960	9435	-231	-2381	-2,759
	lb	16,387	18,086	23,975	16,183	17,544	20,794	-508	-5,248	-6,080
Tipping Load – Straight Rigid Tire**	kg	7745	8548	11 332	7649	8292	9828	-240	-2480	-2,874
	lb	17,069	18,839	24,974	16,857	18,275	21,660	-529	-5,466	-6,333
Tipping Load – Full Turn ISO 14397-1*	kg	6277	6911	9136	6174	6675	7864	-200	-2092	-2,395
	lb	13,834	15,231	20,135	13,607	14,711	17,331	-439	-4,609	-5,278
Tipping Load – Full Turn Rigid Tire**	kg	6678	7352	9719	6568	7101	8366	-212	-2225	-2,548
	lb	14,717	16,203	21,420	14,476	15,650	18,437	-468	-4,904	-5,615
Breakout Force	kg	6334	8584	9491	6495	8373	8959	+36	-219	-369
	lb	13,960	18,920	20,917	14,315	18,453	19,745	+79	-482	-812
Operating Weight	kg	12 854	14 057	16 478	13 158	14 358	16 891	-366	+232	+218
	lb	28,330	30,981	36,317	28,999	31,645	37,227	-806	+511	+480

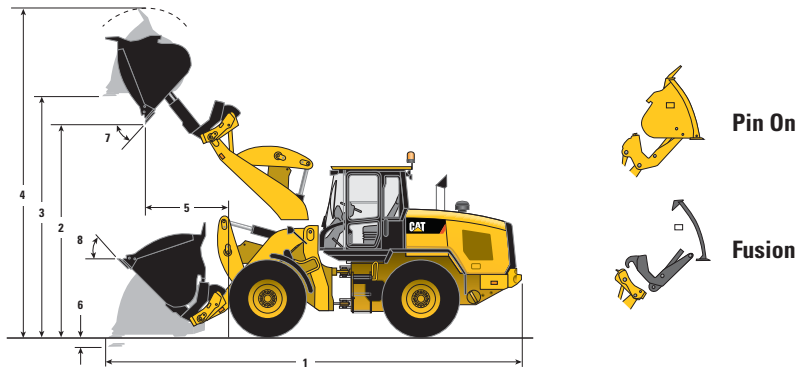
*Full compliance to ISO 14397-1 (2007) Sections 1 thru 6, which requires 2% verification between calculation and testing.

**Compliance to ISO 14397-1 (2007) Sections 1 thru 5.

Dimensions listed are for a machine configured with high dump buckets, heavy counterweights, additional guarding, 80 kg (176 lb) operator, and Michelin 20.5 R25 (L-3) XHA2 tires.

Operating Specifications

Operating Specifications with High Dump Buckets



		Pin On			Fusion			17.5 Tires	High Lift	
		924K	930K	938K	924K	930K	938K	924K	930K	938K
Rated Capacity	m ³	4.1	5.0	5.0	4.1	5.0	5.0	—	—	—
	yd ³	5.4	6.5	6.5	5.4	6.5	6.5	—	—	—
Capacity – Rated at 110% Fill Factor	m ³	4.5	5.5	5.5	4.5	5.5	5.5	—	—	—
	yd ³	5.9	7.2	7.2	5.9	7.2	7.2	—	—	—
Bucket Width	mm	3032	3032	3032	3032	3032	3032	—	—	—
	ft/in	9'11"	9'11"	9'11"	9'11"	9'11"	9'11"	—	—	—
Nominal Material Density 110% Fill Factor	kg/m ³	641	570	728	617	556	703	—	—	—
	lb/yd ³	1081	960	1226	1039	936	1184	—	—	—
1 Length: Overall	mm	7949	8112	8164	8021	8183	8246	+67	+794	+737
	ft/in	26'0"	26'7"	26'9"	26'3"	26'10"	27'0"	+2.6"	+2'7"	+2'5"
2 Dump Clearance: Full Lift Rolled Out	mm	4124	4099	4171	4205	4183	4264	-86	+568	+545
	ft/in	13'6"	13'5"	13'8"	13'9"	13'8"	13'11"	-3.4"	+1'10"	+1'9"
3 Clearance: Level Bucket	mm	4511	4432	4647	4581	4647	4725	-86	+574	+553
	ft/in	14'9"	14'6"	15'2"	15'0"	15'2"	15'6"	-3.4"	+1'10"	+1'9"
4 Height: Overall	mm	6232	6295	6510	6302	6510	6588	-86	+574	+553
	ft/in	20'5"	20'7"	21'4"	20'8"	21'4"	21'7"	-3.4"	+1'10"	+1'9"
5 Reach: Full Lift Rolled Out	mm	1415	1529	1564	1452	1568	1609	+67	+329	+278
	ft/in	4'7"	5'0"	5'1"	4'9"	5'1"	5'3"	+2.6"	+1'0"	+0'10"
6 Dig Depth	mm	95	95	96	115	115	116	+86	+35	+35
	in	3.8"	3.8"	3.8"	4.5"	4.5"	4.6"	+3.4"	+1.4"	+1.4"
Turning Radius Bucket at Carry	mm	6319	6362	6437	6326	6366	6444	+11	+393	+366
	ft/in	20'8"	20'10"	21'1"	20'9"	20'10"	21'1"	+0.4"	+1'3"	+1'2"
7 Maximum Dump Angle	degree	52	52	51	50	49	49	—	—	—
8 Rack Angle at Carry	degree	40	43	43	43	45	46	—	—	—
Tipping Load – Straight ISO 14397-1*	kg	6926	7530	9547	6696	7376	9272	-231	-2381	-2,759
	lb	15,264	16,595	21,040	14,757	16,256	20,435	-508	-5,248	-6,080
Tipping Load – Straight Rigid Tire**	kg	7215	7844	9944	6975	7683	9659	-240	-2480	-2,874
	lb	15,901	17,287	21,917	15,372	16,933	21,287	-529	-5,466	-6,333
Tipping Load – Full Turn ISO 14397-1*	kg	5785	6275	7985	5564	6118	7712	-200	-2092	-2,395
	lb	12,751	13,829	17,598	12,263	13,483	16,996	-439	-4,609	-5,278
Tipping Load – Full Turn Rigid Tire**	kg	6155	6675	8495	5919	6508	8204	-212	-2225	-2,548
	lb	13,565	14,712	18,721	13,046	14,343	18,081	-468	-4,904	-5,615
Breakout Force	kg	5813	7350	8530	5657	7185	8248	+36	-219	-369
	lb	12,812	16,200	18,799	12,468	15,836	18,179	+79	-482	-812
Operating Weight	kg	13 283	14 497	16 577	13 577	14 789	16 990	-366	+232	+218
	lb	29,275	31,951	36,536	29,924	32,594	37,446	-806	+511	+480

*Full compliance to ISO 14397-1 (2007) Sections 1 thru 6, which requires 2% verification between calculation and testing.

**Compliance to ISO 14397-1 (2007) Sections 1 thru 5.

Dimensions listed are for a machine configured with high dump buckets, heavy counterweights, additional guarding, 80 kg (176 lb) operator, and Michelin 20.5 R25 (L-3) XHA2 tires.

Optional Equipment

	924K				930K				938K			
	Operating Weight		Tipping Load – Full Turn with 1.9 m ³ (2.5 yd ³) Pin On Bucket		Operating Weight		Tipping Load – Full Turn with 2.1 m ³ (2.7 yd ³) Pin On Bucket		Operating Weight		Tipping Load – Full Turn with 2.5 m ³ (3.3 yd ³) Pin On Bucket	
	kg	lb	kg	lb	kg	lb	kg	lb	kg	lb	kg	lb
Change with Options Removed:												
Heavy Counterweight	-320	N/A	-523	N/A	-320	-705	-509	-1,121	-320	-705	-502	-1,106
Semi-Cab Option	-100	-220	-116	-256	N/A	N/A	N/A	N/A	N/A	N/A	N/A	N/A
Change with Options Added:												
Logger/Aggregate Counterweight	N/A	N/A	N/A	N/A	+298	+657	423	+932	+298	+657	413	+910
Secondary Steer	+69	+152	+76	+167	+69	+152	+74	+163	+69	+152	+74	+163
Roading Fenders	+18	+39	+25	+55	+18	+39	+24	+52	+18	+39	+24	+52
Guard, Power Train Lower	+77	+169	+72	+158	+77	+169	+70	+154	+68	+149	+61	+134
Guard, Driveshaft	+44	+96	+12	+26	+44	+96	+12	+26	+45	+99	+12	+26
Guard, Crankcase	+11	+24	+15	+33	+11	+24	+14	+30	+11	+24	+14	+30
Ride Control	+49	+107	+27	+59	+49	+107	+27	+59	+49	+107	+27	+59
Guard, Power Train Side	+11	+24	+10	+22	+11	+24	+9	+19	+11	+24	+9	+19
Guard, Front Window	+41	+90	+23	+50	+41	+90	+23	+50	+41	+90	+23	+50
Guard, Rear – Radiator	N/A	N/A	N/A	N/A	+264	+581	+472	+1,040	+284	+625	+500	+1,102
Cold Start Package	+54	+119	+77	N/A	+54	+119	+75	+165	+54	+119	+75	+165

Tire Options

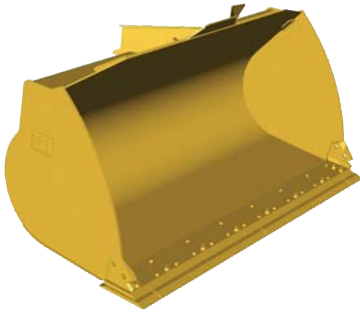


	924K		20.5-25 16PR		20.5R25 (L-5)		750/65R26		23.5R25*	
	mm	in	mm	in	mm	in	mm	in	mm	in
Change with Tire Option as Compared to 20.5R25 L3 Tire										
Vertical Heights	-88.1	-3.5"	-25	-1"	+35	+1.4"	+40	-1.6"	+65	+2.6"
Reach: Bucket at 45°	+67	+2.6"	-11	-0.4"	-21	-0.8"	-67	-2.6"	-63	-2.5"
Width: Over Tires	-87	-3.4"	-16	-0.6"	-14	-0.6"	+122	+4.8"	+41	+1.6"
Turning Radius: Outside of Tires	-43	-1.7"	-12	-0.5"	+20	+0.8"	+73	+2.9"	+15	+0.6"
Turning Radius: Inside of Tires	-43	-1.7"	+8	+0.3"	-7	-0.3"	-61	-2.4"	-21	-0.8"
	kg	lb	kg	lb	kg	lb	kg	lb	kg	lb
Tipping Load – Straight	-250	-551	-23	-50	+401	+883	+24	+52	+487	+1,073
Tipping Load – Full Turn	-216	-476	-20	-44	+347	+764	+21	+46	+421	+927
Operating Weight	-366	-806	-35	-77	+605	+1,333	+37	+81	+738	+1,626

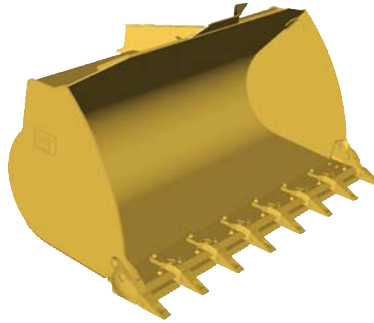
*938K compatible with standard counterweight for general construction and heavy counterweight for Aggregate or Forest Handlers.

Supplemental Specifications

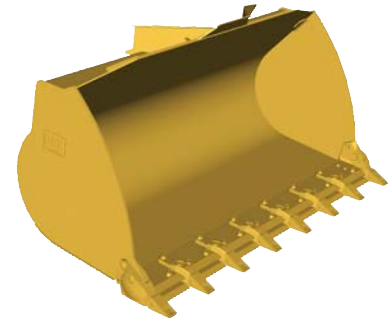
Ground Engagement Options



Bolt-on Cutting Edge



Long Teeth and Segments



Short Teeth and Segments

Change with Ground Engagement Option Compared to Bolt-on Cutting Edge	924K				930K				938K			
	Long Teeth and Segments		Short Teeth and Segments		Long Teeth and Segments		Short Teeth and Segments		Long Teeth and Segments		Short Teeth and Segments	
	mm	in	mm	in	mm	in	mm	in	mm	in	mm	in
Dig Depth	+12	+0.5"	+5	+0.2"	+11	+0.4"	+5	+0.2"	+11	+0.4"	+5	+0.2"
Length: Overall	+146	+5.7"	+121	+4.8"	+146	+5.7"	+121	+4.8"	+146	+5.7"	+121	+4.8"
Dump Clearance	-103	-4.1"	-82	-3.2"	-104	-4.1"	-83	-3.3"	-105	-4.1"	-84	-3.3"
Reach	+104	+4.1"	+89	+3.5"	+103	+4.1"	+88	+3.5"	+102	+4"	+87	+3.4"
	kg	lb	kg	lb	kg	lb	kg	lb	kg	lb	kg	lb
Tipping Load – Straight	-148	-325	-142	-311	-150	-329	-143	-315	-138	-305	-132	-291
Tipping Load – Full Turn	-145	-318	-139	-305	-146	-322	-140	-309	-136	-298	-130	-285
Breakout Force	-121	-266	-115	-254	-121	-266	-115	-254	-112	-245	-106	-234
Operating Weight	+120	+264	+116	+255	+120	+264	+116	+255	+111	+244	+106	+233

Standard Equipment

Standard equipment may vary. Consult your Cat dealer for details.

POWER TRAIN

- Auto idle shut down feature
- Axle seal guards
- Cat C7.1 ACERT engine
 - Engine meets the Brazil MAR-1 and Tier 3/Stage IIIA equivalent emissions standards
 - Power modes (Standard and Performance)
 - Power by range (High Power in Range 4)
 - Turbocharged and aftercooled
 - Filtered crankcase breather
- Coolant protection to -34°C (-29°F)
- Enclosed wet disc full hydraulic brakes
- Fuel priming pump, automatic
- Hydraulically driven demand cooling fan
- Hydrostatic transmission with electronic control
 - Operator modes (Default, TC, Hystat, and Ice)
 - Directional Shift Aggressiveness (fast, medium, slow)
 - Rimpull control, adjust wheel torque
 - Creeper control, adjust ground speed
- Parking brake, electric
- Single plane cooling package wide six fins per inch density
- Throttle lock and max speed limiter

HYDRAULICS

- Automatic lift and bucket kickouts, adjustable in-cab
- Bucket and fork modes, adjustable in-cab
- Cylinder damping at kickout and mechanical end stops
- Fine mode control (fast, medium, slow) in fork mode
- Hydraulic response setting (fast, medium, slow)
- Hydraulic diagnostic connectors and S·O·SSM ports
- Load sensing hydraulics and steering

ELECTRICAL

- Alternator, 115 amp, heavy duty
- 12V power supply in cab (2)
- Batteries, 1,000 CCA (2) 24V system, disconnect switch
- Back-up alarm
- Emergency shutdown switch
- Halogen work and roading lights, LED rear tail lights
- Product LinkTM, Cellular PL241 (for certified countries only)
- Remote jump start post
- Resettable main and critical function breakers

OPERATOR ENVIRONMENT

- 75 mm (3 in) retractable seat belt, with audible alarm and indicator
- Automatic temperature control
- Binder storage net
- Enclosed cab (930K/938K)
- External mirrors with lower parabolic
- Hydraulic control lockout
- Interior cab lighting, door and dome
- Interior rearview mirrors (2)
- Lunch box storage
- Radio ready speakers
- Rear window defrost, electric
- Seat-mounted electronic implement controls, adjustable
- Column mounted multi function control – lights, wipers, turn signal
- Tilt and telescopic steering wheel
- Tinted front glass
- Wet arm wiper/washer, 2-speed and intermittent, front

OTHER STANDARD EQUIPMENT

- Large-access enclosure doors with adjustable close/open force
- Parallel lift loader linkage

Optional Equipment

Optional equipment may vary. Consult your Cat dealer for details.

- Auto lube, integrated in secondary display
- Auxiliary flow, third and fourth function, adjustable through secondary display
- Beacon light, strobe
- Cab
 - Enclosed or open canopy (924K)
 - Rear wiper
 - Secondary display to enable features and adjust parameters
 - Sunscreen, front and rear
- Cat Production Measurement (CPM) – fully integrated scale system, with optional printer that can print up to three copies of the weigh ticket
- Camera, rearview
- Coded start (requires secondary display)
- Cold start package
- Corrosion protection package
- Counterweight, (heavy and logger)
- Coupler, FusionTM
- Debris packages (low, medium, high)
- Differential lock, front axle (standard on 930K and 938K)
- Fenders (extended cover and full coverage)
- Guarding, machine
- Linkage, high lift
- Lights, auxiliary, halogen or LED with engine compartment lights
- Cat DETECT with Object Detection
- Product link PRO/Elite
- Radio packages
- Ride Control System, adjustable through secondary display
- Seats
 - Deluxe seat – fully adjustable fabric air suspension seat with mid backrest and mechanical lumbar support
- NOTE: Not all features are available in all regions.



For more complete information on Cat products, dealer services, and industry solutions, visit us on the web at www.cat.com

AEHQ8018 (08-2017)

© 2017 Caterpillar
All rights reserved

Materials and specifications are subject to change without notice. Featured machines in photos may include additional equipment. See your Cat dealer for available options.

CAT, CATERPILLAR, SAFETY.CAT.COM, their respective logos, "Caterpillar Yellow" and the "Power Edge" trade dress, as well as corporate and product identity used herein, are trademarks of Caterpillar and may not be used without permission.

VisionLink is a trademark of Trimble Navigation Limited, registered in the United States and in other countries.

