

CAT® MINI EXCAVATOR ATTACHMENT OPTIONS

» Get Multiple Machines Out of One

For more information,
visit [Cat.com/attachments](https://cat.com/attachments)
or contact your local
Cat dealer.



LET'S DO THE WORK.™

AEXQ1584-03 March 2019

© 2019 Caterpillar. All Rights Reserved. CAT, CATERPILLAR, LET'S DO THE WORK, their respective logos, "Caterpillar Yellow," the "Power Edge" trade dress, Cat "Modern Ho," as well as corporate and product identity used herein, are trademarks of Caterpillar and may not be used without permission.

LET'S DO THE WORK.™



DO MORE WITH ONE MACHINE.

Invest in what you already own — give your machine Cat® attachments and equip it to do more. And because our attachments are engineered, balanced and tested to each Cat model, they promise to minimize stress and optimize performance. Browse our lineup and find the tools to make your work easier.



AUGERS



Bore with better efficiency.

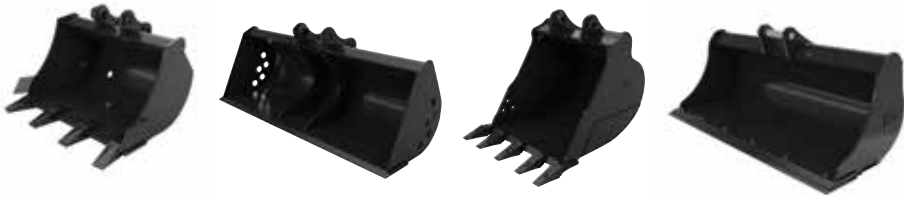
Cat augers offer different speed and torque options for work in a variety of soils. The speed and torque are engineered to extract soil efficiently and prevent stalling in dense ground. Select from a range of auger bits.

Specifications

| Attachment Models | Compatibility | Drive Shaft Torque @ Max Pressure | | Drive Method |
|-------------------|---------------|-----------------------------------|---------|------------------|
| | | Nm | (lb ft) | |
| A7B | MHEX | 1105 | (815) | Direct Drive |
| A14B | MHEX | 2304 | (1700) | Direct Drive |
| A19B | MHEX | 4118 | (3037) | Single Planetary |
| A26B | MHEX | 6826 | (5034) | Double Planetary |

MHEX = Mini Excavator

BUCKETS



The shape of Cat buckets improves digging, loading and material retention. Compared to most competition, we have more capacity per every inch of width. And each is made of high-strength, tempered steel. Select from a range of bucket teeth.

Specifications

| Attachment Models | Compatibility | Width Range | | Capacity Range | |
|------------------------|---------------|-------------|---------|----------------|--------------------|
| | | mm | (in) | m ³ | (yd ³) |
| Digging | MHEX | 230-700 | (9-28) | 0.014-0.111 | (0.018-0.145) |
| Ditch Cleaning | MHEX | 700-1800 | (28-71) | 0.027-0.42 | (0.035-0.55) |
| Tilting Ditch Cleaning | MHEX | 1000-1600 | (40-63) | 0.055-0.28 | (0.071-0.366) |
| Heavy Duty | MHEX | 300-1067 | (12-42) | 0.05-0.39 | (0.065-0.51) |
| Heavy Duty Capacity | MHEX | 300-915 | (12-36) | 0.082-0.54 | (0.065-0.71) |
| Heavy Duty Rock | MHEX | 610-762 | (24-30) | 0.23-0.31 | (0.30-0.405) |
| Mud/Grading | MHEX | 1000-1800 | (39-71) | 0.09-0.68 | (0.12-0.89) |

MHEX = Mini Excavator

COMPACTION WHEELS



Cat compaction wheels provide a low cost option for trench compaction. The wheels feature tapered roller bearings and tampered foot design with static pad rollers, to allow for smooth operation and achieving a high level of compaction. Six to ten passes are usually adequate to achieve compaction in normal soil conditions, dependent on the required compaction levels.

Specifications

| Attachment Models | Compatibility | Weight | | Width | | Number of Wheels |
|-------------------|---------------|---------|-------------|---------|---------|------------------|
| | | kg | (lbs) | mm | (in) | |
| 305 mm (12 in) | MHEX, BHL | 155-435 | (342-959) | 292-356 | (12-24) | 2 |
| 406 mm (16 in) | MHEX | 216-240 | (476-528) | 399 | (16) | 3 |
| 457 mm (18 in) | MHEX, BHL | 487-574 | (1074-1266) | 439-449 | (17-18) | 3 |
| 559 mm (22 in) | MHEX | 273-593 | (569-1307) | 559 | (22) | 3-4 |
| 610 mm (24 in) | MHEX, BHL | 518-581 | (1142-1281) | 559 | (22) | 3 |
| 914 mm (36 in) | MHEX, BHL | 882-899 | (1945-1982) | 884 | (36) | 5 |

MHEX = Mini Excavator BHL = Backhoe Loader

COUPLERS



Cat Dual Lock™ pin grabber couplers allow operators to change attachments in seconds, increasing job efficiency and enabling one machine to do multiple tasks. We offer two, easy-to-use options: hydraulic (controlled from the cab) and mechanical. And all Cat models include primary and secondary locking systems to ensure what you put on your machine, stays on.

Specifications

| Attachment Models | Compatibility * | Unit Weight | |
|-------------------|-----------------|-------------|-----------|
| | | kg | lbs |
| Dual Lock™ | MHEX | 12-110 | (29-206) |
| Dual Lock™ Tilt | MHEX | 112-180 | (247-398) |

MHEX = Mini Excavator
 * Only available on 304, 305, 305.5, 307, 307.5, 308, 309

FLAIL MOWERS



Cat flail mowers are designed for high performance cutting of vegetation, saplings, overgrown agricultural areas, retention ponds, and forested terrain. The hydraulic flail mowers reduce weeds, saplings, shrubs and small trees into mulched material, making them ideal for environmental maintenance applications, such as mowing along ditches, fence rows and retention ponds, controlling overgrowth, and cleaning up high banks and slopes.

Specifications

| Model | Compatibility | Overall Width | | Working Width | | Swinging Teeth Per Drum |
|--------|---------------|---------------|------|---------------|------|-------------------------|
| | | mm | (in) | mm | (in) | |
| HMF110 | MHEX | 1184 | (47) | 1000 | (40) | 16 |
| HMF210 | MHEX | 1184 | (47) | 1000 | (40) | 16 |

MHEX = Mini Excavator

HAMMERS



Cat hammers were designed for hard hits, reducing rock and concrete materials. Each features an automatic shut-off and buffering system to reduce machine vibrations. And some of our hammers are fully enclosed to suppress noise.

Specifications

| Attachment Models | Compatibility | Operating Weight* | | Impact Frequency | Tool Diameter | |
|-------------------|---------------|-------------------|-------------|------------------|---------------|--------|
| | | kg | (lb) | | bpm | mm |
| B4, B4s | MHEX | 289-294 | (637-648) | 600-1000 | 53 | (2.1) |
| B6, B6s | MHEX | 394-411 | (869-906) | 500-900 | 68 | (2.7) |
| B8, B8s | MHEX | 440-454 | (970-1000) | 400-800 | 75 | (2.9) |
| H25D | MHEX | 70 | (154) | 1000-1900 | 36 | (1.42) |
| H35s | MHEX | 125-130 | (276-287) | 600-1800 | 40 | (1.57) |
| H45s | MHEX | 145-250 | (320-551) | 780-1800 | 50 | (1.97) |
| H55 | MHEX | 250-340 | (551-750) | 600-1680 | 58 | (2.28) |
| H55s | MHEX | 260-345 | (573-761) | 600-1680 | 58 | (2.28) |
| H65 | MHEX | 305-380 | (673-838) | 720-1740 | 68 | (2.68) |
| H65s | MHEX | 315-390 | (695-860) | 720-1740 | 68 | (2.68) |
| H75s | MHEX | 480-500 | (1058-1103) | 840-1650 | 74.5 | (2.93) |
| H95s | MHEX | 600-730 | (1323-1610) | 700-1260 | 87.5 | (3.44) |

MHEX = Mini Excavator
* Operating weight includes hammer, standard tool and mounting bracket.

MULCHERS



Cat mulchers are designed for high performance cutting and mulching of vegetation, saplings, and undergrowth from overgrown agricultural areas and forested terrain. The hydraulic mulchers reduce saplings, shrubs and trees into mulched material, making it ideal for environmental maintenance, such as brush clearing and creating fire lanes. Other applications include: reclaiming untilled land, removing foliage from building construction sites and shredding pruned material and organic waste for biomass production.

Specifications

| Model | Compatibility | Overall Width | | Working Width | | Fixed Teeth Per Drum |
|-------|---------------|---------------|------|---------------|------|----------------------|
| | | mm | (in) | mm | (in) | |
| HM208 | MHEX | 1026 | (40) | 818 | (32) | 15 |
| HM210 | MHEX | 1026 | (48) | 1012 | (40) | 18 |

MHEX = Mini Excavator

RIPPERS



Built to cut through dense dirt, loosen rocky soil and break below the frost layer, Cat rippers are taking on some of the most challenging ground conditions. And because they're made for specific Cat models, they can better transfer machine power into ripping power.

Specifications

| Attachment Models (Shank Length) | | Compatibility | Width | | Height | | Tip Radius | | Weight | |
|-------------------------------------|------|---------------|-------|--------|--------|--------|------------|------|--------|-------|
| mm | (in) | | mm | (in) | mm | (in) | mm | (in) | kg | (lb) |
| 490 | (19) | MHEX | 232 | (9.1) | 660 | (25.9) | 650 | (26) | 45 | (99) |
| 676 | (27) | MHEX | 273 | (10.7) | 825 | (32.4) | 810 | (32) | 61 | (134) |
| 861 | (34) | MHEX | 346 | (13.6) | 1074 | (42.2) | 1039 | (41) | 107 | (235) |
| 940 | (37) | MHEX | 420 | (17) | 1164 | (46) | 1120 | (44) | 170 | (325) |

MHEX = Mini Excavator

SHEARS



Cat shears rotate 360 degrees for rapid repositioning and are designed with a straight, lower jaw to improve the cutting force.

Specifications

| Attachment Model | Compatibility | Throat Force | | Weight (boom-mount) | Jaw Opening | | Jaw Depth | | |
|------------------|---------------|--------------|----------|------------------------|-------------|------|-----------|------|--------|
| | | kN | (Sh Ton) | | mm | (in) | mm | (in) | |
| S305 | MHEX | 1812 | (204) | 608 | (1,340) | 240 | (9.4) | 290 | (11.4) |

MHEX = Mini Excavator

THUMBS



Cat thumbs work with buckets to grab, pick or sort material. They are hydraulically controlled from the cab, opening and closing around loads. And when you don't need it, the thumb can retract against the machine stick.

Specifications

| Attachment Model | Compatibility | Rotation Angle (Degrees) |
|------------------------------|---------------|--------------------------|
| Hydraulic | MHEX | 116-133 |
| Stiff Link | MHEX | 81 |
| Hydraulic Progressive Link * | MHEX | 174-181 |

MHEX = Mini Excavator
 * Hydraulic Progressive Link thumb only available on 307, 307.5, 308, 309

VIBRATORY PLATE COMPACTORS



Cover more ground with the Cat vibratory plate compactor's large surface and pack soil faster with its high-power pulses. Flexible isolators are built in to guard against excessive vibrations.

Specifications

| Attachment Models | Compatibility | Impulse Force | | Cycles min | Base Plate Width | |
|-------------------|---------------|---------------|--------|---------------|------------------|------|
| | | kN | (lbf) | | mm | (in) |
| CVP16 | MHEX | 16 | (3650) | 2200 | 305 | (12) |
| CVP40 | MHEX | 40 | (8928) | 2200 | 584 | (23) |

MHEX = Mini Excavator

GROUND ENGAGING TOOLS (GET)

Choosing the right GET is critical. Each is engineered to maximize machine performance in specific applications, reducing resistance while boring, digging or scraping. Our GET also protect heavy-wear areas, extending attachment life and lowering maintenance costs.

AUGER BITS



Standard Bit

- Factory standard
- For drilling holes with a large diameter



Tree Bit

- Tapered tip
- For drilling holes with a large mouth and narrow base to properly fit a root ball or holes with a small diameter to fill with mulch or fertilizer



Industrial Bit

- Excellent tooth retention while digging
- Allows for easy removal and installation



Standard Rock Drill Head Bit

- Transforms a standard bit into an industrial bit
- For severe ground conditions including rock and various types of concrete
- Bolt-on design for easy removal when returning to normal conditions

Auger bit sizes range from 152 to 914 mm (6 to 36 in) in diameter to a depth of approximately 1270 mm (50 in). Stackable extensions range from 305 to 1829 mm (12 to 72 in) in length and are available to enable deeper drilling.

BUCKET TEETH



Wide

- Low penetration
- Low impact applications
- Use to smooth ground surfaces



Extra Duty

- Moderate penetration
- Use in moderate impact applications
- More wear material



General Duty

- Moderate penetration
- Moderate impact and abrasive conditions



Penetration Plus

- Good penetration
- Moderate to high impact applications



Penetration

- Very good penetration
- Moderate impact and lower abrasive conditions
- Less wear material



Double Spike

- Very good penetration
- Use on fracturable materials
- Install in corner positions with spike centers



Spike

- Excellent penetration
- Use on cohesive materials
- Less wear material

QUICK REFERENCE

Find attachments made for your work.

| | Augers | Buckets | Compaction Wheels | Couplers | Flail Mowers | Hammers | Mulchers | Rippers | Shears | Thumbs | Vibratory Plate Compactors |
|---|--------|---------|-------------------|----------|--------------|---------|----------|---------|--------|--------|----------------------------|
| Agriculture | x | x | x | x | x | x | x | | | x | |
| Concrete Prep and Flatwork | | x | x | x | | x | | | | | x |
| Excavation and Earth Moving | x | x | | x | | x | | x | | | |
| Finishing and Site Clean-Up | | x | x | x | x | x | x | | | x | |
| Landscaping | x | x | | x | x | x | x | | | x | |
| Material Handling | | x | | x | | x | | | | | |
| Rental | x | x | x | x | x | x | x | x | x | x | x |
| Residential and Commercial Construction | x | x | x | x | x | x | x | | | x | x |
| Site Prep and Demolition | | x | | x | | x | | x | x | x | |
| Trenching and Utilities | x | x | x | x | | x | | x | | x | x |

Machine model availability and attachments vary by region. Please contact your local Cat dealer for availability.



WORK WITHOUT WORRY.

Ask your local Cat dealer about attachment warranty and extended protection plans. It's another way Caterpillar helps protect your investment.

