

# CAT® B SERIES HAMMERS

for Excavators



EASY TO MAINTAIN AND OPERATE • LOW OWNING AND OPERATING COSTS

## BREAKING POWER YOU CAN COUNT ON

- Ready whenever you need it – whether you use your Cat® B Series Hammers every day, or once a month.
- Dial in the performance you need to suit your application. In the field, select between high blow frequency or maximum power.
- Rely on class-leading power day in and day out.

## PROTECT YOUR MACHINE

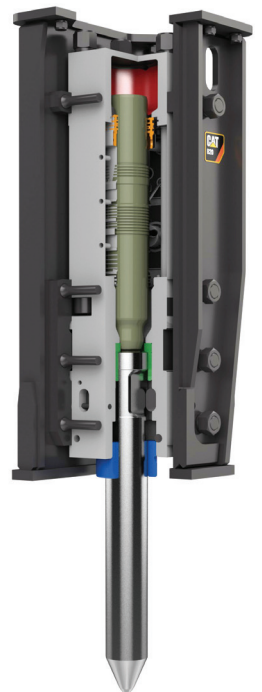
- Pulsing of the hammer can cause spikes in the machine system, which can cause wear on the machine's hydraulic system.
- Cat B Series Hammers protect your machine investment by capturing and buffering hydraulic spikes *before* they can damage your machine.

## EASY TO MAINTAIN

- Spend more time working, less on service.
  - Grease quickly from one single standing-height grease point.
  - The major wear point on any hammer is the lower tool bushing. Service the lower bushing in the field with simple hand tools.
- Verify the gas charge of the B Series Hammer without removing it from your machine. Gas charge is typically checked annually.

## YOU'RE SUPPORTED – WHEREVER THE JOB TAKES YOU

- Go where the job takes you; there's a Cat dealer nearby.
- Rely on Caterpillar for complete system support: parts, service and technical knowledge for your machine, hammer and hydraulics from a single source.



### NOTES:

---

---

### CONTACT INFORMATION:

Dealer \_\_\_\_\_ Name \_\_\_\_\_ Phone \_\_\_\_\_

# CAT® MACHINE MATCHING GUIDE

Machine Weight	B20 Top Mount	B20 Side Mount (B)	B20 Side Mount (CB)	B20 Side Mount (DB)	B30 Top Mount	B30 Side Mount (CB)	B30 Side Mount (DB)	B35 Top Mount
<b>Minimum</b> t (lb)	18.0 (39,700)	18.0 (39,700)	18.0 (39,700)	18.0 (39,700)	25.0 (55,120)	25.0 (55,120)	25.0 (55,120)	30.0 (66,200)
<b>Maximum</b> t (lb)	25.0 (55,120)	25.0 (55,120)	25.0 (55,120)	25.0 (55,120)	32.0 (70,600)	32.0 (70,600)	32.0 (70,600)	40.0 (88,200)
<b>Tracked Excavators</b>								
319D	•	•						
320D / 320D2	•	•	•					
320D L	•	•						
320D RR	•	•	•					
320D2 L	•	•	•					
320D2 GC	•	•	•					
320E		•	•					
320E RR		•	•					
320F	•							
321D LCR	•	•	•					
323D / 323D2	•	•	•					
323E	•							
323F	•							
324D	•		•	•	•	•	•	
324E			•	•		•	•	
325F LCR	•							
326D2			•		•	•		
326F	•				•			
328D LCR					•	•	•	•
329D / 329D2 / 330D2 L					•	•	•	•
329E					•			•
330D2					•	•	•	•
330F					•	•		•
335F LCR								•
336D / 336D2 / 336D2 XE								•
336D2 GC								•
336E								•
336F								•
336F XE								•
340D / 340D2								•
340F								•
<b>Wheeled Excavators</b>								
M318D	•	•						
M318F								
M320D2								
M320F	•							
M322D	•	•						
M322D2	•	•						
M322F	•							

All models may not be available in your area. Please contact your local dealer to learn more.

Note 1: Caterpillar recommends the use of a suitable shield/guard system to insure operator has adequate protection from flying debris.

Note 2: These matches are for general reference purposes for Cat machines only. When special boom and quick coupler arrangements are used, these matches may not apply.

Note 3: When matching hammers to a non Cat machine, selection should be made by machine weight. Refer to the weight range at the top of the table in order to determine the correct match.

**Contact your dealer for more information about special arrangements or matching to a machine other than Cat .**

**BUILT FOR IT.™**

