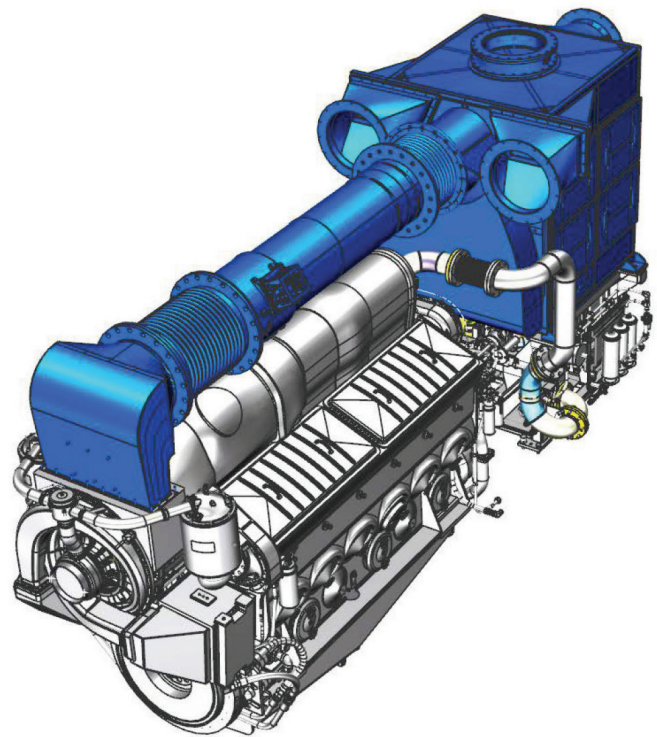


The EMD 710 Series E 23 — now EPA Tier 4 Final Certified

Electro-Motive Diesel is proud to announce the receipt of its EPA Tier 4 Final Certification. This continues the tradition and proud heritage of the EMD 2-cycle medium speed diesel. EMD has manufactured over 79,000 engines operating in service around the world.

The EMD 2-cycle advantage provides marine customers with superior acceleration and responsiveness. The E 23 Tier 4 Final engine utilizes Selective Catalytic Reduction which maximizes fuel efficiency. This solution will also be applied to meet the IMO III requirements.

The footprint of the EPA T4 Final product is IDENTICAL to the previous product minimizing customer and shipyard modifications. The 710 has power when you need it, providing safe and reliable operation every day. Consult your EMD dealer or distributor for an in depth look at the EPA Tier 4 Final EMD E 23.



E 23 Applications



Marine



Off Shore



Power Generation

EMD 2-Cycle Advantage

Basic Facts

- 2-Cycle Diesel Engine – uniflow scavenged
- Available in V configurations with 8, 12, 16, and 20 cylinder options
- Continuous output from 2000 – 5000 hp (1250 bkw -3729 bkw)
- Intermittent ratings available
- Certified for US EPA Tier 4 Final
- Comprehensive approvals/Certifications from IACS member societies
- Dual Fuel options available

History & Support

- Proven architecture in use since 1940
- 79,000 EMD engines installed world wide
- EMD's decades of support is unsurpassed in the industry

Unique Features

- Steel fabricated crankcase – Lightweight easy to repair on catastrophic events
 - Lightweight
 - Can be repaired under any catastrophic event
 - Lower BMEP – increased longevity
 - Lowest Cost of ownership in the industry
- Clutched Turbocharger – supercharger benefits low speed with full turbocharger benefits at high speed made directly by EMD
- Unique 200 rpm idle capability
- Unparalleled transient response from idle to full power

Maintenance

- No special tools required
- Lightweight, durable maintenance components
- 30,000 hour or more overhaul service life
- Easy, non invasive inspection of internal power assemblies
- Decreased parts consumption with no mid-life top end adjustments
 - Less inventory
 - Less parts to purchase and consume
- No lube oil replacement intervals
- Parts availability worldwide

Tier 4 enhancements

- Single high pressure lube oil pump with mechanical oil filtration and bypass centrifuge
- Enhanced brazed plate lube oil cooler
- Proven Caterpillar components for the SCR System
- Closed Crankcase Ventilation

