



Connecting For Success...

ELECTRIC POWER DAYS 2017

BUILT FOR IT.

CATERPILLAR®

Rental Products

Large Electric Power - Rental

Gareth Osborne

BUILT FOR IT.

CATERPILLAR®

Why Rent?

- Urgency of need
- Duration of need and the application
- Total cost of ownership
- Risks and uncertainties
- Availability of equipment
- Flexibility
- Try before you buy
- Turnkey service
- Hidden costs
- Value of asset
- Installation costs/issues
- Financial implications



Connecting For Success...

Rental Product Portfolio

Current (XQE)

- XQE20 - Available
- XQE30 - Available
- XQE60 - Available



Replacement

New (XQP and XQC)

- XQP20 - 2018
- XQP30 - 2018
- XQP60 – Q4 2017
- XQP100 - Available
- XQP150 - Available
- XQP275 - Available
- XQP300 - Available
- XQP500 - Available
- XQP1100 – Q4 2017 (Pre Order)
- XQC1200 - Available
- XQC1600 - Available

Connecting For Success...

'Rental Ready' Features XQP20 - XQP150

Socket Box

Connection options to suit you

Control Panel

Sound isolated for operator comfort and low noise

Enclosure

Handling and exposure to the elements on site, Spark Arresting design

Serviceability

Frequently serviced between rentals you need ease of access

Alternator

CIP protection Integrated Voltage Regulator (IVR)

Digital Controls

— Same user-friendly interface across the range

Customer Connection

Robust connection point with excellent load cable access

Baseframe

Ready for the rough and tumble of frequent onsite handling
24 Hrs Run time
Avoid environmental leaks.
More/reinforced lift / drag points to assist frequent handling

Connecting For Success...

'Rental Ready' Features XQP275 – XQ500

Controls

EMCP 4.2B including new rental features
Optional Synchronising Controllers:
EMCP 4.4, DEIF AGC4 and ComAp IntelliGen
Simple Speed switching (50/60Hz)

Lifting Arch

Tested to 4G including all onboard liquids

Enclosure

Robust design with galvanised steel
Excellent service access
Sound isolated control and distribution area for operator protection

Exhaust System

Spark arresting certified generator set

Fan

Variable-speed, controlled via ECM depending on operating conditions

EMC

EMC Certified

Baseframe

Single wall 9hr tank
Dual wall 12hr tank
110% bund capacity
Forklift pockets and drag points

Alternator

CIP protection as standard
Class H temperature rise

Distribution

Robust connection point with excellent load cable access, Door includes viewing window and safety cut off.



Connecting For Success...

'Rental Ready' Features XQP1100

EMC:
EMC Certified

Cooling System:
Vertical Discharge

Exhaust System:
Spark arresting certified.

Cooling:
Achieves 100% prime output up to
43°C ambient & 300m ASL at 50Hz

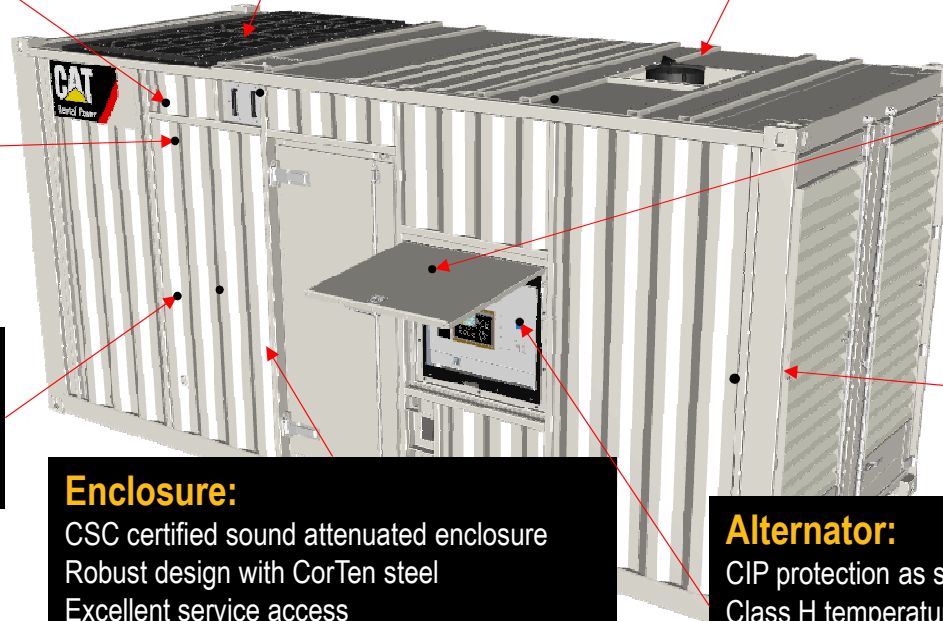
Controls:
EMCP 4.4 and mot.
breaker
Optional -
DEIF AGC4 and ComAp
InteliGen
50/60Hz switchable via
terminal link

Fuel tank:
Single wall 12hr tank w. forklift
pockets and drag points.
Integral to discharge ducting.

Enclosure:
CSC certified sound attenuated enclosure
Robust design with CorTen steel
Excellent service access
Sound isolated control and distribution area
for operator protection

Distribution (on back):
2000A breaker as standard, with
3200A breaker optional (LV 60Hz)
Robust customer connection area

Alternator:
CIP protection as standard
Class H temperature rise
Integrated Voltage Regulator (only
with EMCP controls)



Connecting For Success...

XQC1600 (3516) Overview

- 40-ft High-Cube, CSC 9-High Stack, ISO Container
- Cat[®] 3516C-HD diesel engine
- IPP Rating with Overload Capability
- 50Hz / 60Hz Switchable via Switch
- 49°C @750m ASL
- 75 dBA (50Hz) & 81 dBA (60Hz)
at 7m and 40°C ambient
- EMCP 4.3 w/ DEIF AGC-4
- Variable Frequency Fan Drive
- 250 gal single-wall fuel tank
 - Solenoid fuel fill control valve
- 110% Spill Containment



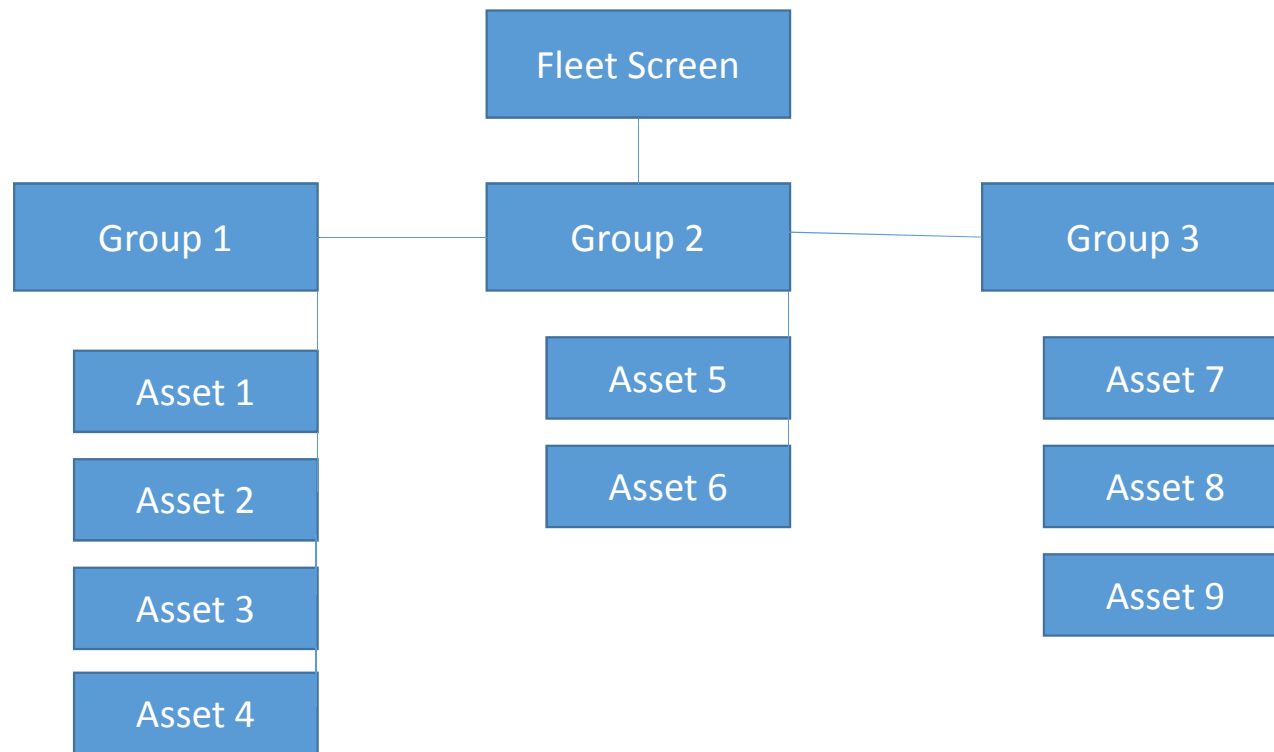
Ratings, Speeds and Voltages			
Frequency (Hz)	Voltage (V)	IPP Rating ekW (kVA)	Overload (105% IPP) ekW (kVA)
50	400V	1515 (1893)	1590 (1987)
60	480V	1705 (2131)	1790 (2238)

Connecting For Success...



Cat Connect for Electric Power

Cat Connect UI/UX



Connecting For Success...

Fleet Screen – Generation User Interface (UI)

[FLEET](#)
[OPERATIONS](#)
[CONFIGURATIONS](#)
[ADMINISTRATION](#)

Welcome
ditmaej

Logout

FILTERS

MANAGE
CLEAR

Saved Filters

Select Filter
>>

FILTER BY

ON

Groups
Manufacturer
Model
Dealer
Customer
Device
Subscription

Units
3

Engine Running
1

Engine Ready
0

Engine Not Ready
0

Not Communicating
2

CURRENT FAULTS

HIGH 0

MEDIUM 0

LOW 0

CURRENT
TODAY
SEVEN DAYS
THIRTY DAYS

LIFE TIME FLEET TOTALS

kW
5102
kWhrs

668
HOURS

155
FUEL (Gallons)

ALERTS 0

FLEET SUMMARY

Time Zone: CST/CDT - Central Time (US & Canada)
EXCEL

ASSET ID	SERIAL NUMBER	OPERATING STATE	ALERTS	HIGH	MEDIUM	LOW	KILOWATT-HRS	HOURS	FUEL	MANUFACTURER	MODEL	DEALER	CUSTOMER	DEVICE	SUBSCRIPTION	LAST REPORTED TIME
	JK700144	Engine Running	0	0	0	0	17	426	155	CAT	0XQ35			PLG641	COMP	2017-03-22 12:27:51
	N6D03276	Not Communicating	0	0	0	0				CAT	00C66	Caterpillar Inc		PLG641	COMP	2017-03-22 12:25:27
	N6D03283	Not Communicating	0	0	0	0	5085	242		CAT	00C66	Caterpillar Inc		PLG641	COMP	2017-03-22 12:06:49

Connecting For Success...

Asset Screen

FLEET OPERATIONS CONFIGURATIONS ADMINISTRATION
Welcome ditmaej
Logout

FILTERS

MANAGE CLEAR

Saved Filters

Select Filter: >>

FILTER BY ON

- Groups
- Manufacturer
- Model
- Dealer
- Customer
- Device
- Subscription

FLEET | ASSET SUMMARY

JK700144

CURRENT TODAY SEVEN DAYS THIRTY DAYS

TIME BASED ASSET TOTALS

3.3 HOURS

1 FUEL (Gallons)

ALERTS 37

FAULTS AND ALERTS

Time Zone: CST/CDT - Central Time (US & Canada)

EXCEL

SEVERITY LEVEL	CODE	DESCRIPTION	EVENT TIME
MEDIUM	J4006-31	Engine in Cooldown Condition Exists	2017-03-21 15:43:56

ASSET INFORMATION

Status:
Manufacturer: CAT
Model: 0XQ35
% Load: 34.00

CURRENT ASSET INFORMATION

Fuel Level

Battery Voltage

Engine Speed

Coolant Temp

Engine Oil Pressure

Voltage

Power Factor

Apparent Power

82 %

13.8 V

1800 RPM

185 °F

44 PSI

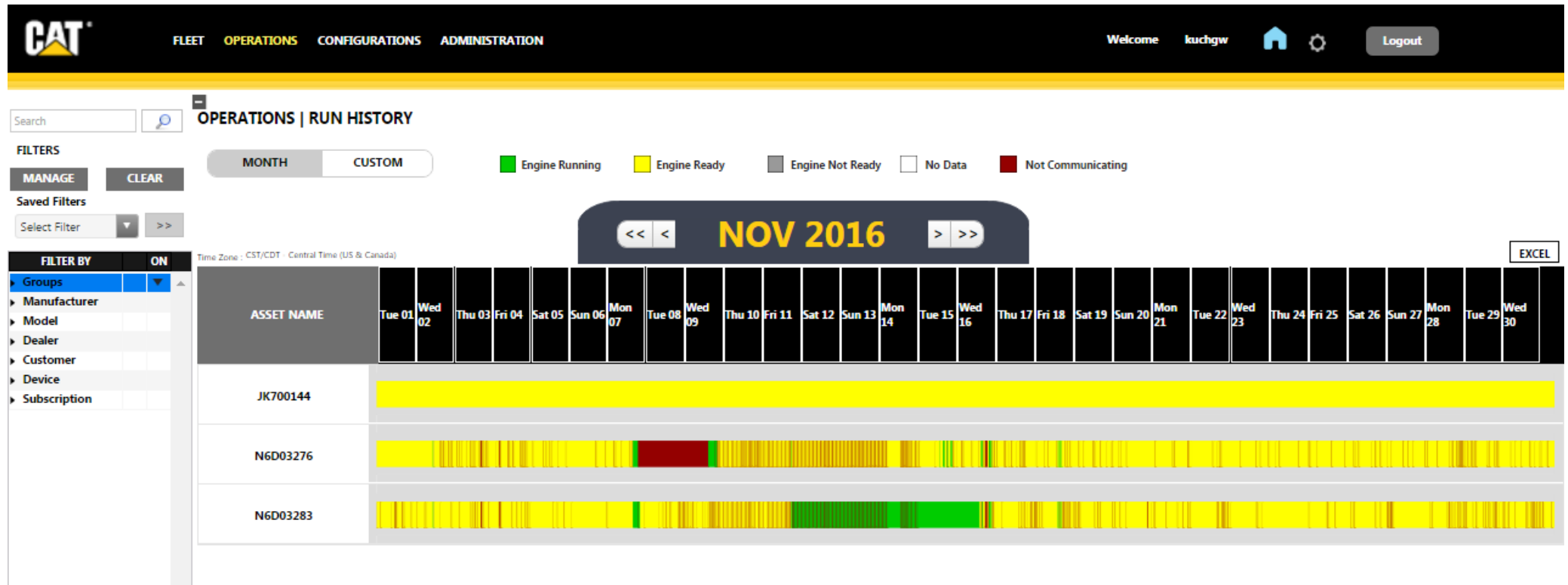
Phase A 120.0
Phase B 120.0
Phase C 120.0

Frequency (Hz) 60.0

0.00 kVA
Real Power 0.00 kW


Connecting For Success...

Operations Screen






Connecting For Success...

Configurations: Groups



[FLEET](#) [OPERATIONS](#) [CONFIGURATIONS](#) [ADMINISTRATION](#)

Welcome kuchgw[Logout](#)




FILTERS

MANAGE

CLEAR

Saved Filters

Select Filter:  >>

FILTER BY

ON

Groups

Manufacturer

Model

Dealer

Customer

Device

Subscription

CONFIGURATIONS | GROUPS

MANAGE GROUPS

CREATE GROUPS

Group Name: *

Group Description: *

☒ Private

Add Assets

Add Groups

All Members

SAVE

CANCEL

* Required Fields

Double-click an Asset to add

Double-click an Asset or Group to remove

Connecting For Success...

Configurations: Geofence

The screenshot displays the CAT Geofence configuration interface. The top navigation bar includes the CAT logo and links for FLEET, OPERATIONS, CONFIGURATIONS, and ADMINISTRATION. The user is logged in as 'luchgw' and has a 'Logout' button. The main heading is 'CONFIGURATIONS | GEOFENCE'. Below this, there are tabs for 'MANAGE GEOFENCES' and 'CREATE GEOFENCES'. The 'MANAGE GEOFENCES' tab is active, showing a form for 'Geofence Name' (Newberry Factory), a 'Private' checkbox, a 'Show Assets' checkbox, and 'Created by: mullins1'. A map is displayed with a blue geofence polygon. Several red location pins are visible on the map, with a tooltip for one pin showing 'SerialNumber : JK700323' and 'EngineOperatingState : Not Communicating'. A sidebar on the left contains a search bar and filter options. A table on the right lists geofence coordinates.

Geofence Name: Newberry Factory ☐ Private ☒ Show Assets Created by: mullins1

Double Click on the Map to choose a Location


Map Satellite

SerialNumber : JK700323
EngineOperatingState : Not Communicating

GEOFENCE COORDINATE
34.2897 : -81.5429
34.2891 : -81.5404
34.2851 : -81.5436
34.2869 : -81.5464

Connecting For Success...

Configurations: Alerts

 FLEET OPERATIONS CONFIGURATIONS ADMINISTRATIONWelcome kuchgwLogout

CONFIGURATIONS | CREATE ALERT

Search

FILTERS

MANAGE CLEAR

Saved Filters

Select Filter >>

FILTER BY ON

Groups

Manufacturer

Model

Dealer

Customer

Device

Subscription

Assets/Groups List

1HZ02216

AL400135

AL600176

C5E02242

CAT25E6

CF600103

CF600108

CF600109

CF600110

CF600112

CF600113

CF600114

CF600115

Double-click an Asset or Group to add

Selected Assets/Groups

1HZ02215

Caterpillar Assets

Double-click an Asset or Group to remove

Criteria

Fault

Fault

Geofence

Parameter

Status

Alert Name : *

Alert Description : *

☒ Private

☐ Do Not Send Notifications

☐ Notify Any Day/Time (24/7)

CLEAR

NOTIFICATIONS:

EMAIL SMS

FIRST NAME

LAST NAME

EMAIL

OWN

ADD EMAIL

DELETE

Preview

OUTGOING NOTIFICATION TIME SETTINGS

Time Zone:

CST/CDT - Central Time (US & Canada)

Start Time:

12:00 AM

End Time:

12:00 AM

Days:

☒ Monday

☒ Tuesday

☒ Wednesday

☒ Thursday

☒ Friday

☐ Saturday

☐ Sunday

Connecting For Success...

Live Demo

- <https://assetiq.cat.com/Thingworx/Runtime/index.html#master=CAT.Default.Master&mashup=CAT.FleetSummary.MU>

Questions?

Connecting For Success...

BUILT FOR IT.

©2017 Caterpillar
All rights reserved.

CAT, CATERPILLAR, BUILT FOR IT, their respective logos, “Caterpillar Yellow”, the “Power Edge” trade dress as well as corporate and product identity used herein, are trademarks of Caterpillar and may not be used without permission.

Connecting For Success...