

# REPAIR OPTIONS

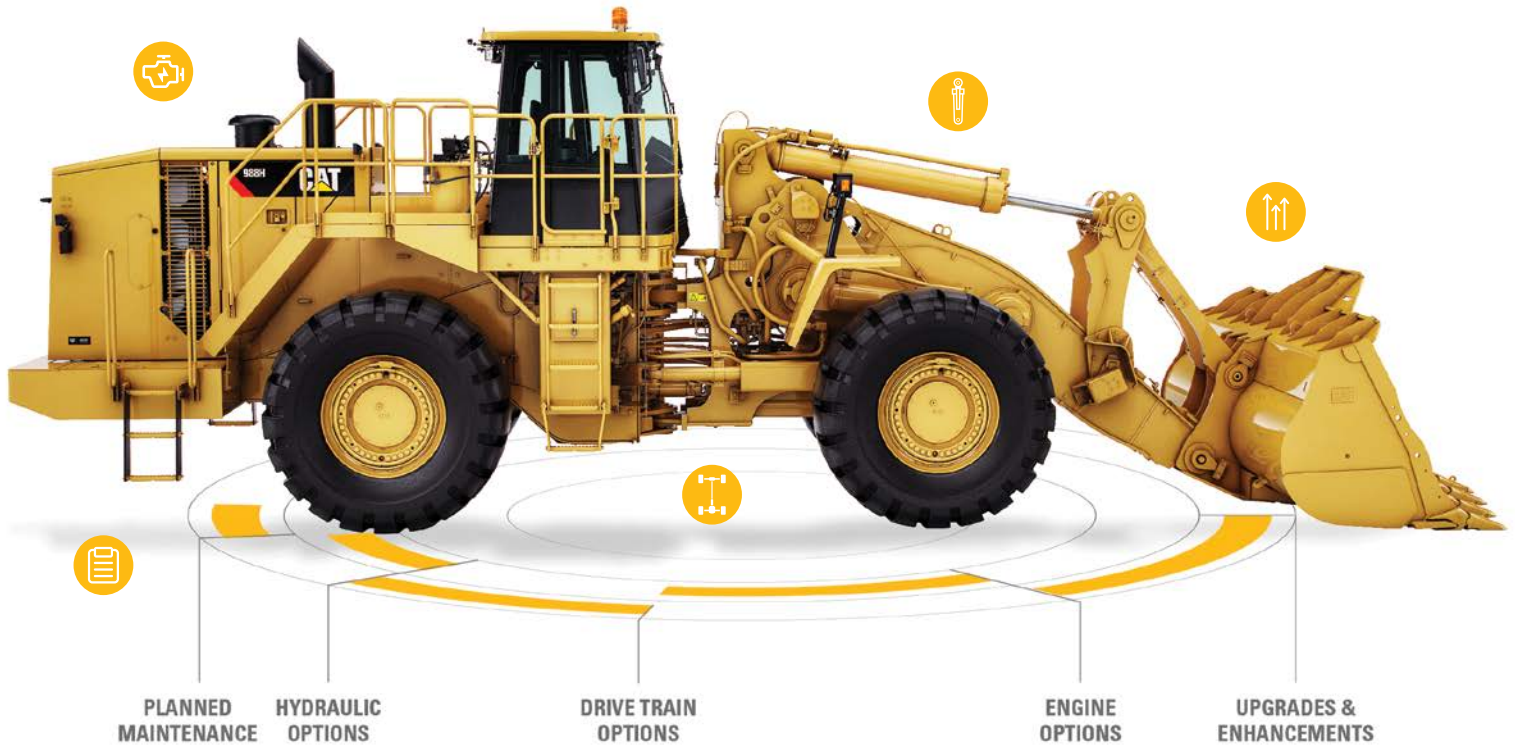


988G/H



# 988 G/H

**BROADEST RANGE OF OPTIONS**



**PLANNED MAINTENANCE**

**HYDRAULIC OPTIONS**

**DRIVE TRAIN OPTIONS**

**ENGINE OPTIONS**

**UPGRADES & ENHANCEMENTS**



## UPGRADES & ENHANCEMENTS

A RANGE OF UPGRADES AND ENHANCEMENTS INCLUDING, BUT NOT LIMITED TO:

| SAFETY & SUSTAINABILITY   | PERFORMANCE & PRODUCTIVITY  | EQUIPMENT MANAGEMENT & MAINTENANCE |
|---|-----------------------------|------------------------------------|
| Seat Belt Reminder, White Noise Back-Up Alarms, Work Area Vision System | Fuel Consumption Monitoring | Asset IQ™                          |



## PLANNED MAINTENANCE

| PARTS                        | KITS/S•O•S <sup>SM</sup>                                      | SERVICE CONTRACTS   |
|------------------------------|---|---|
| Filters, Fluids, Other Parts | PM Kits (dry/wet), PM Kits (dry/wet, w/S•O•S), S•O•S Services | Parts Contract, Parts & Service Contract, Parts/Service & Repair Contract |

## ENGINE OPTIONS



### OWNERSHIP

How long do you plan to own the machine?



### UTILIZATION

How much/often do you use the machine?



### AFFORDABILITY

What is your expectation with regard to price?



### TURNAROUND

How quickly does your machine need to get back to work?

|               | REBEARING/RESEAL | REBEARING/RESEAL PLUS COMPONENT | DEALER REBUILD/EXCHANGE | REMAN        | NEW |
|---------------|------------------|---------------------------------|-------------------------|--------------|-----|
| OWNERSHIP     | < 2 years        |                                 |                         | > 2 years    |     |
| UTILIZATION   | < 1000 hours     |                                 |                         | > 1000 hours |     |
| AFFORDABILITY | < 50% of new     |                                 |                         | > 50% of new |     |
| TURNAROUND    | Flexible         |                                 |                         | Urgent       |     |

|                 |         |         |                 |         |         |
|-----------------|---------|---------|-----------------|---------|---------|
| COMPONENT LIFE  | Extend  | Extend  | Extend/Restore  | Restore | Restore |
| INDICATORS      | Planned | Planned | Planned/Problem | Problem | Problem |
| UPGRADE OPTIONS |         |         | ●               | ●       | ●       |

\* Options determined based on condition



## DRIVE TRAIN OPTIONS



### OWNERSHIP

How long do you plan to own the machine?



### UTILIZATION

How much/often do you use the machine?



### AFFORDABILITY

What is your expectation with regard to price?



### TURNAROUND

How quickly does your machine need to get back to work?

|               | REBEARING/RESEAL | REBEARING/RESEAL PLUS COMPONENT | COMPONENT REBUILD/EXCHANGE | REMAN        | NEW |
|---------------|------------------|---------------------------------|----------------------------|--------------|-----|
| OWNERSHIP     | < 2 years        |                                 |                            | > 2 years    |     |
| UTILIZATION   | < 1000 hours     |                                 |                            | > 1000 hours |     |
| AFFORDABILITY | < 50% of new     |                                 |                            | > 50% of new |     |
| TURNAROUND    | Flexible         |                                 |                            | Urgent       |     |

|                 |         |         |                 |         |         |
|-----------------|---------|---------|-----------------|---------|---------|
| COMPONENT LIFE  | Extend  | Extend  | Extend/Restore  | Restore | Restore |
| INDICATORS      | Planned | Planned | Planned/Problem | Problem | Problem |
| UPGRADE OPTIONS |         |         | ●               | ●       | ●       |

\* Options determined based on condition



## HYDRAULIC OPTIONS

|                 |                            |                         |       |      |
|-----------------|----------------------------|-------------------------|-------|------|
| LEAKS?          | CYLINDER RESEAL/LIGHT HONE |                         |       |      |
| PRICE           | ← \$ →                     |                         |       |      |
| TURNAROUND TIME | Scheduled                  | Dependent*              | Fast  | Fast |
| BROKEN?         |                            | DEALER REBUILD/EXCHANGE | REMAN | NEW  |

\*Dealer Rebuild = Scheduled Turnaround Time. Dealer Exchange = Fast Turnaround Time.

## TOTAL SOLUTIONS: CAT® COMPETITIVE ADVANTAGE

### CATERPILLAR WARRANTY & INSURANCE

GENUINE CAT® NEW AND REMAN PARTS ARE BACKED BY OUR 12-MONTH WARRANTY, SO YOU CAN FEEL CONFIDENT SELECTING A REPAIR OPTION THROUGH YOUR CAT DEALER.

---

### CAT PARTS

New Cat parts and components are built for more than one life, so you can get the most value at the lowest possible cost. Cat REMAN parts carry a same-as-new Caterpillar warranty for less than the price of new. Classic parts are available for lower cost, lower utilization applications.

### OTHER DEALER CAPABILITIES

We are dedicated to providing complete solutions for your equipment needs. As a part of the Cat dealer network, we have vast product support capabilities allowing us to offer worldwide support at a local level.

### CAT FINANCING

No matter where your job takes you, Cat Commercial Account is a quick and easy way to manage costs. For a limited time, special financing terms are available to qualifying customers.

### EMSOLUTIONS

Cat EMSolutions™ puts our knowledge and expertise to work with the latest equipment technologies and services to help you reduce operating costs and get more value from your equipment.

### UPGRADES & ENHANCEMENTS

Unlike our competitors, the initial sale of the Cat product is only the beginning of the product's lifecycle. With upgrades, you can add features that were available (but not purchased) and features introduced on newer equipment. Cat Upgrade Enhancements retrofit programs allow you to update the safety, comfort, performance and appearance of your Cat equipment, as well as extend product life and add to the resale value.