

318D L Series 2

Hydraulic Excavator

2017



Engine

Engine Model	C4.4 ACERT™	
Engine Power (ISO 14396)	93.0 kW	125 hp
Net Power (SAE J1349/ISO 9249)	84.3 kW	113 hp

Weights

Operating Weight – Long Undercarriage	17 000-	37,490-
	17 800 kg	39,250 lb

318D L Series 2 Features

Engine and Hydraulics

A powerful C4.4 ACERT electrically controlled engine that meets U.S. EPA Tier 3, EU Stage IIIA, Japan 2006 (Tier 3) equivalent or China Stage III Nonroad emission standards, combined with a highly efficient hydraulics system provide excellent machine performance with low fuel consumption.

Structures

Caterpillar design and manufacturing techniques assure outstanding durability and service life in the toughest applications.

Operator Station

The spacious cab features excellent visibility and easy-to-access switches. The monitor features a full-color graphical display that is user intuitive and highly visual with built-in pre-start machine checks. Overall, the new cab provides a comfortable working environment for efficient day-long operation.

Service and Maintenance

This machine has been designed so that routine service and maintenance can be completed quickly and easily to help reduce ownership costs. Convenient access points with extended intervals and advanced filtration keep downtime to a minimum.

Complete Customer Support

Your Cat® dealer offers a wide range of services that can be set up under a customer support agreement when you purchase your equipment.

Cat 318D L Series 2 Total Solutions

Caterpillar and the extensive Cat dealer network offer a wide variety of solutions designed to meet the unique needs of your business.

Contents

Operator Station.....	4
Engine	5
Hydraulics	6
Undercarriage and Structures	7
Front Linkage	7
Work Tools.....	8
Serviceability.....	10
Complete Customer Support.....	11
Specifications.....	12
Standard Equipment.....	19
Optional Equipment.....	20
Notes.....	21





Increased horsepower, improved controllability, and a comfortable operator station help make the Cat 318D L Series 2 hydraulic excavator an industry-leading performer. Easy to operate with unmatched versatility, the 318D L Series 2 will help increase your productivity and lower your operating costs.

Operator Station

New levels of comfort, visibility and operation.

Operator Station

The ergonomically designed operator station is spacious, quiet, and comfortable, assuring high productivity during a long work day. All switches are located on the right-hand console for convenient access.

Monitor

The monitor is a full-color Liquid Crystal Display (LCD) that can be adjusted to minimize sun glare and has the capability of displaying information in 27 languages.

Joystick Control

Low-effort pilot-operated joystick controls are designed to match the operator's natural wrist and arm position for maximum comfort and minimum fatigue.

Seat

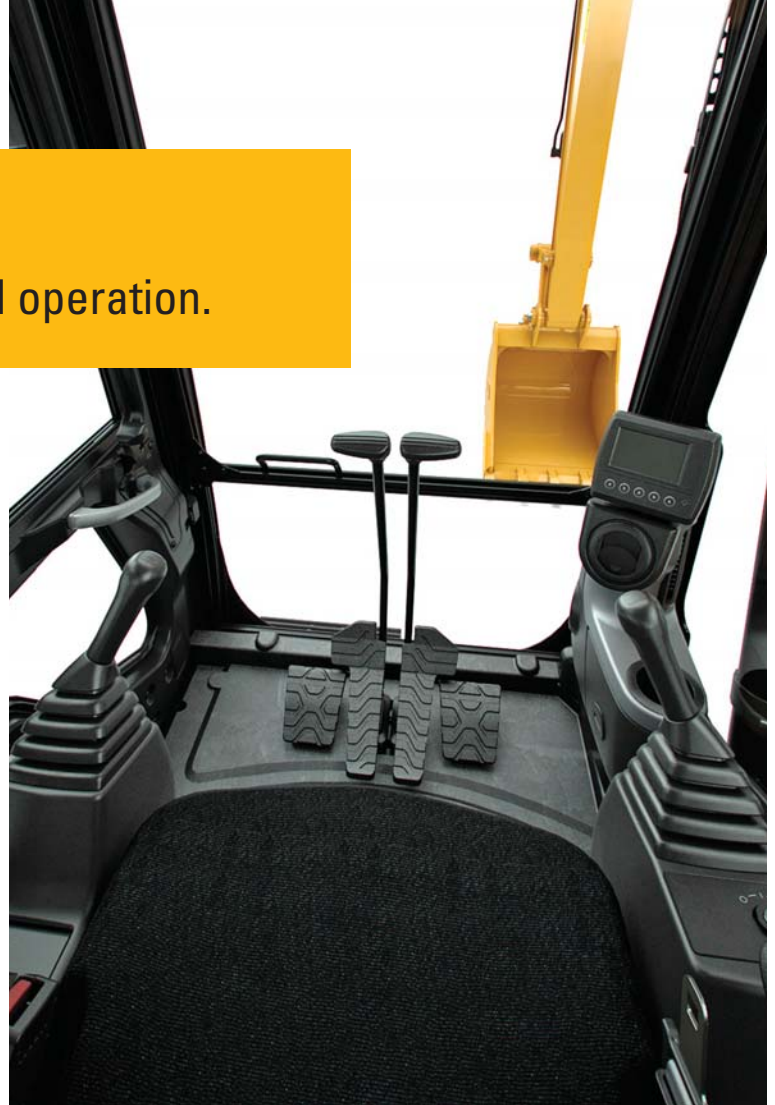
The standard suspension seat provides a variety of adjustments to suit the operator's size and weight including fore/aft height and weight. Wide adjustable armrests and a seat belt are also included.

Console

The consoles feature a simple functional design to reduce operator fatigue, ease of switch operation, and excellent visibility. Both consoles have attached armrests with tilting adjustments.

Cab Exterior

The cab shell features thick steel tubing along the bottom perimeter of the cab, improving resistance to fatigue and vibration.



Cab Mounts

The cab shell is attached to the frame with viscous rubber cab mounts, which dampen vibrations and sound levels while enhancing operator comfort.

Windows

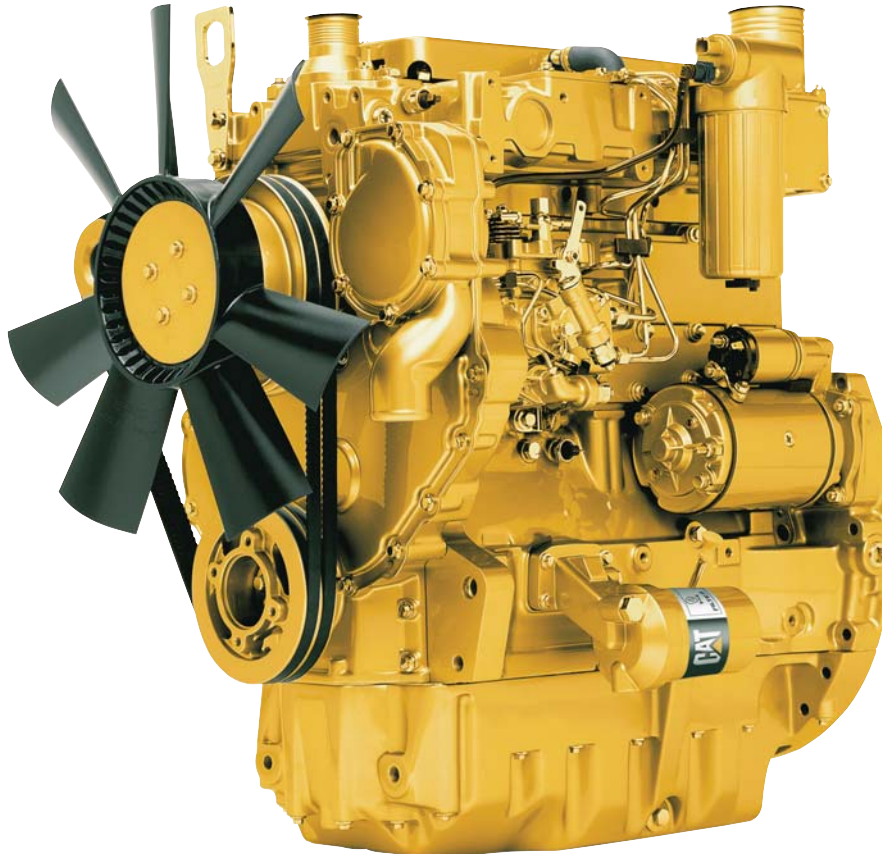
To maximize visibility, all glass is affixed directly to the cab, eliminating window frames. The upper front windshield opens, closes, and stores on the roof above the operator with a one-touch action release system.

Wipers

Pillar-mounted wipers increase the operator's viewing area and offer continuous and intermittent modes.

Engine

Delivering the most work per liter/gallon of fuel consumed.



The Cat C4.4 ACERT electronically controlled engine has been designed to meet Tier 3, Stage IIIA, Japan 2006 (Tier 3) equivalent or China Stage III Nonroad emission standards. This engine incorporates a time-proven mechanical governor and a low-pressure fuel injection system that are major contributors to the improvement of fuel system robustness, high fuel efficiency, and ease of troubleshooting. High filtration performance from the primary filter incorporating a water separator and a secondary filter also help to improve fuel filtration system reliability.

Automatic Engine Control and Fuel Delivery

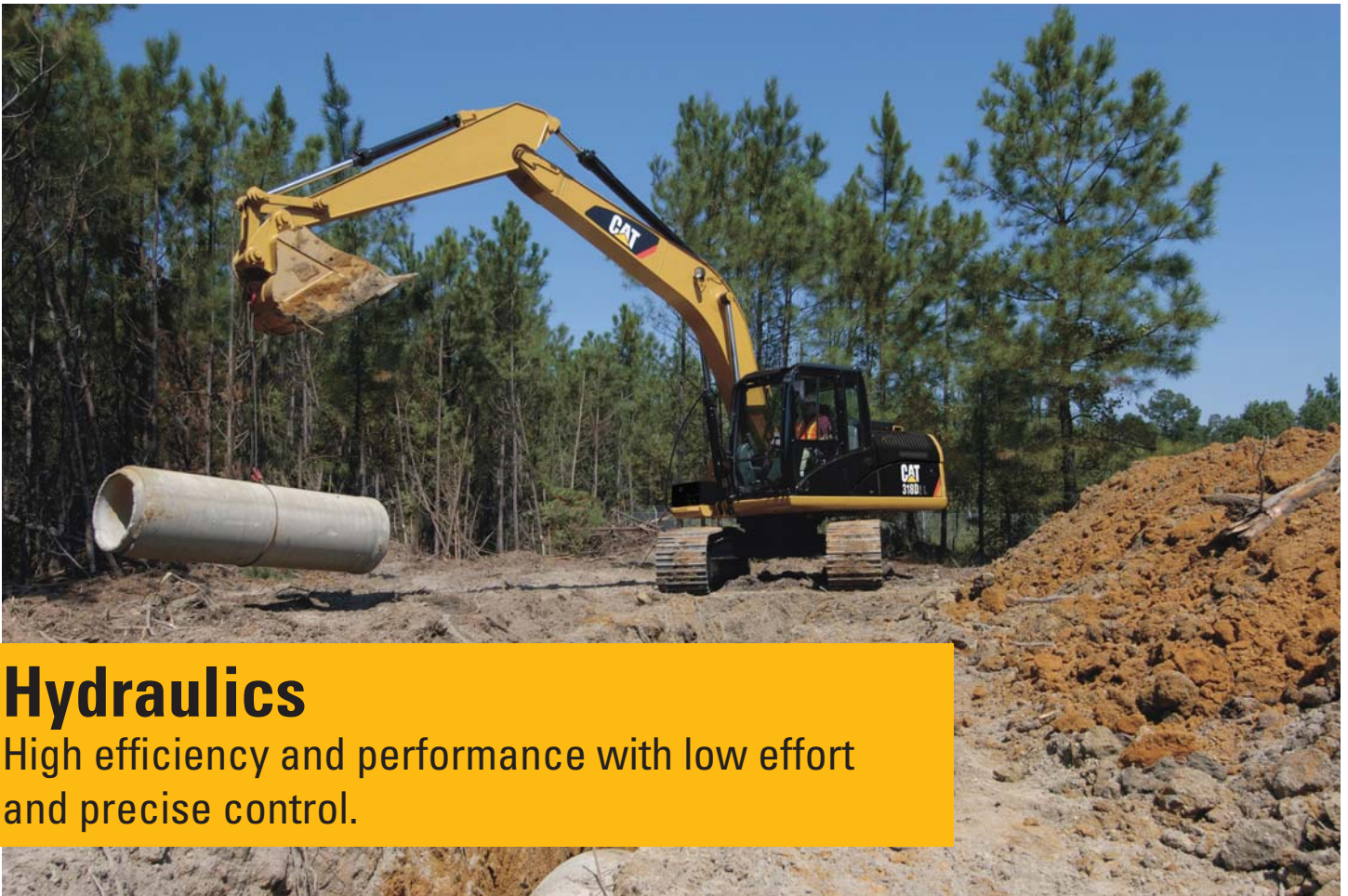
With a net power of 84 kW (113 hp) the 318D L Series 2 has been designed with fuel economy in mind and burns approximately 3% less fuel when compared with the larger 318D L depending on application.

Biodiesel-Ready Fuel System

The machine's Tier 3 engine can now run on biodiesel up to B20 that meets ASTM 6751 standards – all to give you more potential fuel-saving flexibility.

Economy Mode

Available as a standard feature, economy mode allows you to balance the demands of performance and fuel economy while maintaining the breakout forces and lift capacity enjoyed at standard power.



Hydraulics

High efficiency and performance with low effort and precise control.

Outstanding Performance

The 318D L Series 2 hydraulic system is designed for high efficiency and performance. The new compact design utilizes shorter tubes and lines to reduce friction and pressure drops, resulting in a more efficient use of power.

- Hydraulic snubbers at the rod end of the boom cylinders and both ends of the stick cylinders cushion shock, reduce sound, and increase cylinder life.
- A hydraulic cross-sensing system uses two hydraulic pumps under all operating conditions, improving productivity with faster implement speeds and quicker, stronger pivot turns.

Boom and Stick Regeneration Circuit

The boom and stick regeneration circuit saves energy during boom-down and stick-in operation, increasing efficiency and lowering operating cost.

Easy Operation

Operators do not need to learn different modes. An automatic boom and swing priority function automatically selects the best mode based on joystick movement.

Undercarriage and Structures

Excellent stability and maneuverability.

Caterpillar uses advanced engineering and software to analyze all structures, creating a durable, reliable machine for robust applications. More than 70 percent of the structural welds are robotic and achieve additional penetration over manual welds. These structural components and undercarriage are the backbone of the machine's durability.

Carbody Design

X-shaped, box-section carbody provides excellent resistance to torsional bending. Robot-welded track roller frames are press-formed, pentagonal units that deliver exceptional strength and service life. Integral to the track roller frame are the standard idler and center guards, which help maintain track alignment when traveling or working on slopes.

Grease Lubricated Track

Grease lubricated track seals protect the track link and deliver long track link pin and bushing inner wear life.

Travel Motors

Travel motors with automatic speed selection let the 318D L Series 2 automatically change up and down from high and low speeds in a smooth, controlled manner.



Front Linkage

Performance, reliability and durability.

Built for performance and long service life, Cat booms and sticks are welded, box-section structures with thick multi-plate high-strength steel fabrications.

Heavy Duty Stick*

A 2.6 m (8'6") heavy-duty stick has additional plates, new forged parts, and welded joints for increased durability, and digging force.

Reach Stick*

A 2.9 m (9'6") reach stick maximizes the digging envelope. It is made of high-tensile-strength steel using a large box-section design with interior baffle plates for increased durability.

Heavy Duty Boom

The 5.1 m (16'9") heavy-duty reach boom is reinforced making it more durable and recommended for use in severe applications.

*Offering varies for different regions.



Work Tools

Dig, hammer, rip, and cut with confidence.

An extensive range of Cat work tools* for the 318D L Series 2 includes buckets, compactors, grapples, multi-processors, rippers, crushers, pulverizers, hammers and shears. Each is designed to optimize the versatility and performance of your machine.

Couplers

Quick couplers allow one person to change work tools in seconds for maximum performance and flexibility on a job site. One machine can move rapidly from task to task, and a fleet of similarly equipped machines can share a common work tool inventory.

Cat Pin Grabber Couplers

The Cat Pin Grabber Coupler is easy to activate, easy to engage, easy to disengage. Operating procedures are simple and easy to learn. It's the easiest way to improve productivity on every job site.

One excavator can share buckets and a variety of attachments with similar size excavators. Managing your assets just got easier.

*Offering varies for different regions.



Buckets

Cat Buckets and Cat Ground Engaging Tools (GET) are designed and matched to the machine ensuring optimal performance and fuel consumption.

General Duty Buckets (GD)

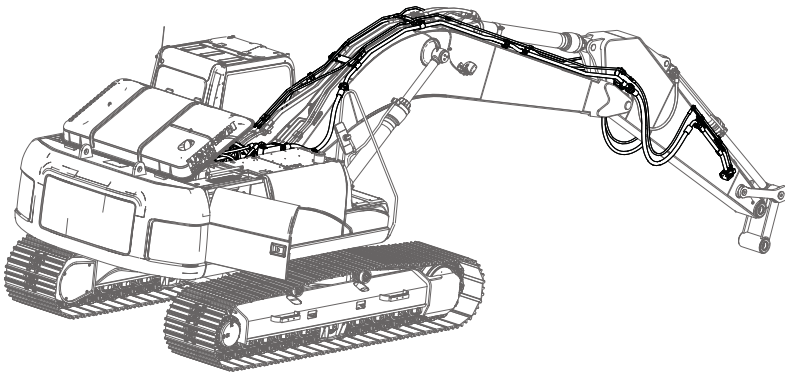
These buckets are designed for digging in low-impact, moderately abrasive materials such as dirt, loam, gravel and clay.

Heavy Duty Buckets (HD)

HD buckets are a good starting point when application conditions vary. Especially when conditions include mixed dirt, clay and sand and gravel.

Severe Duty Buckets (SD)

These buckets are best suited to highly abrasive applications such as shot rock, sand stone and granite.



Hydraulic Kits

Caterpillar offers field-installed hydraulic kits that are uniquely designed to integrate Cat Work Tools with Cat excavators. Hoses and tubes are pre-made, pre-shaped, and pre-painted to make installation quick and easy.

Comprehensive Product Support

All Cat work tools are backed up by a world-wide network of well-stocked spare parts depots and highly experienced after-sales service and support personnel.

Work tools available vary by region. Contact your local Cat dealer for more information about the work tools available in your region.



Serviceability

Simplified service and maintenance saves time and money.

Fast, Efficient Service with Extended Intervals

Most service points are at the ground level for easy access with extended intervals to increase machine availability.

Pump Compartment

A service door on the right side of the upper structure allows ground-level access to the pump, pilot filter, drain filter, and the engine oil filter.

Radiator Compartment

The left service door allows easy access to the engine radiator, oil cooler, air-to-air-aftercooler, water separator and first and second fuel filter. A reserve tank and drain cock are attached to the radiator for simplified maintenance.

The air filter features a double-element construction for superior cleaning efficiency. When the air cleaner plugs, a warning is displayed on the monitor screen inside the cab.

Hydraulic Filter

The hydraulic return filter is an in-tank design with a service life of 2,000 hours. A sensor indicates through the in-cab monitor when the filter is plugged and needs to be replaced.

Fan Guard

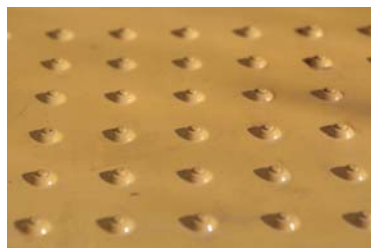
The engine radiator fan is enclosed by fine wire mesh, reducing the risk of an accident.

Anti-Skid Plate

Anti-skid plate covers top of storage box and upper structure to prevent slipping during maintenance.

Diagnostics and Monitoring

The 318D L Series 2 is equipped with S-O-SSM sampling ports and hydraulic test ports for the hydraulic system, engine oil, and for coolant. A test connection for the Cat Electronic Technician (Cat ET) service tool is located behind the cab.





Complete Customer Support

Cat dealer services help you operate longer with lower costs.

Product Support

You will find nearly all parts at our dealer parts counter. Cat dealers utilize a worldwide computer network to find in-stock parts to minimize machine downtime. Save money with remanufactured components.

Machine Selection

Make detailed comparisons of the machines you are considering before you buy. What are the job requirements, machine attachments and operating hours? What production is needed? Your Cat dealer can provide recommendations.

Maintenance Services

Repair option programs guarantee the cost of repairs up front. Condition monitoring services and diagnostic programs such as scheduled oil sampling, coolant sampling, and technical analysis help you avoid unscheduled repairs.

Customer Support Agreements

Cat dealers offer a variety of product support agreements and work with customers to develop a plan that best meets specific needs. These plans can cover the entire machine, including attachments, to help protect the customer's investment.

Replacement

Repair, rebuild, or replace? Your Cat dealer can help you evaluate the cost involved so you can make the right choice.

318D L Series 2 Hydraulic Excavator Specifications

Engine

Engine Model	C4.4 ACERT	
Engine Power – ISO 14396	93.0 kW	125 hp
Net Power – SAE J1349/ISO 9249	84.3 kW	113 hp
Bore	105 mm	4.13 in
Stroke	127 mm	5.00 in
Displacement	4.4 L	269 in ³

- Net power advertised is the power available at the flywheel when the engine is equipped with fan, air cleaner, muffler and alternator.
- No engine derating required below 2300 m (7,545 ft) altitude.
- The 318D L Series 2 with a powerful C4.4 ACERT engine meets Tier 3, Stage IIIA, Japan 2006 (Tier 3) equivalent or China Stage III Nonroad emission standards.

Weights

Operating Weight –	17 700 kg*	39,021 lb*
Long Undercarriage	17 800 kg**	39,250 lb**

*HD boom – 5.1 m (16'9"), R2.9 (9'6") stick, 600 mm (24") triple grousers track shoes, GD 0.8 m³ (1.00 yd³) bucket

**HD boom – 5.1 m (16'9"), HD 2.6 m (8'6") HD stick, 600 mm (24") triple grouser track shoes, SD 0.76 m³ (0.99 yd³) bucket

Swing Mechanism

Swing Speed	8.9 rpm	
Swing Torque	44.7 kN·m	22,825 lbf·ft

Drive

Maximum Travel Speed	4.8 km/h	3.0 mph
Maximum Drawbar Pull	156 kN	35,070 lbf

Hydraulic System

Main System – Maximum Flow (Total)	272 L/min	72 gal
Swing System – Maximum Flow	136 L/min	36 gal
Maximum Pressure – Equipment	35 000 kPa	5,080 psi
Maximum Pressure – Swing	22 600 kPa	3,280 psi
Pilot System – Maximum Flow	23.7 L/min	1,450 in ³ /min
Pilot System – Maximum Pressure	4120 kPa	600 psi
Boom Cylinder – Bore	110 mm	4 in
Boom Cylinder – Stroke	1193 mm	47 in
Stick Cylinder – Bore	120 mm	5 in
Stick Cylinder – Stroke	1331 mm	52 in
Bucket Cylinder – Bore	110 mm	4 in
Bucket Cylinder – Stroke	1039 mm	41 in

Service Refill Capacities

Fuel Tank Capacity	300 L	79.3 gal
Cooling System	19.53 L	5.2 gal
Engine Oil (with filter)	16 L	4.3 gal
Swing Drive	3 L	0.8 gal
Final Drive (each)	6 L	1.6 gal
Hydraulic System (including tank)	100 L	26.4 gal
Hydraulic Tank	85 L	22.5 gal

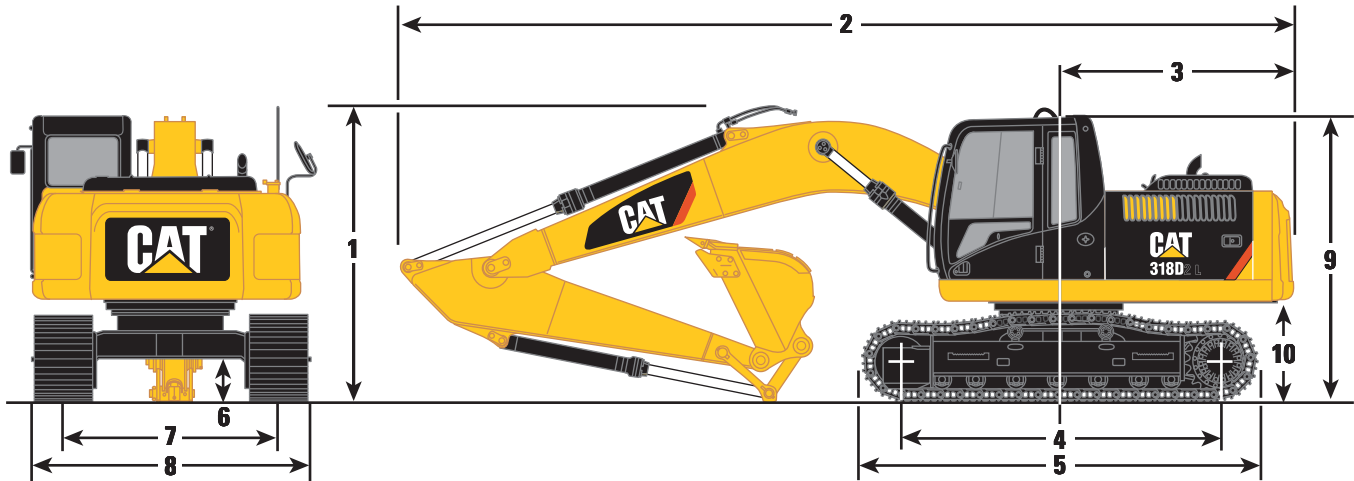
Track

Number of Shoes (each side)	44 pieces
Number of Track Rollers (each side)	7 pieces
Number of Carrier Rollers (each side)	2 pieces

318D L Series 2 Hydraulic Excavator Specifications

Dimensions

All dimensions are approximate.



Boom Options

HD Boom
5.1 m (16'9")

Stick Options

	R2.9 m (9'6")	HD 2.6 m (8'6")
1 Shipping Height*	3070 mm (10'1")	3030 mm (9'11")
Shipping Height with Guard Rail	2940 mm (9'8")	2940 mm (9'8")
2 Shipping Length	8560 mm (28'1")	8540 mm (28'0")
3 Tail Swing Radius	2500 mm (8'2")	2500 mm (8'2")
4 Length to Center of Rollers	3170 mm (10'5")	3170 mm (10'5")
5 Track Length	3970 mm (13'0")	3970 mm (13'0")
6 Ground Clearance	460 mm (1'6")	460 mm (1'6")
7 Track Gauge	1990 mm (6'6")	1990 mm (6'6")
8 Transport Width		
600 mm (24") Shoes	2590 mm (8'6")	2590 mm (8'6")
9 Cab Height	2870 mm (9'5")	2870 mm (9'5")
Cab Height with Top Guard	3020 mm (9'11")	3020 mm (9'11")
10 Counterweight Clearance**	1000 mm (3'3")	1000 mm (3'3")

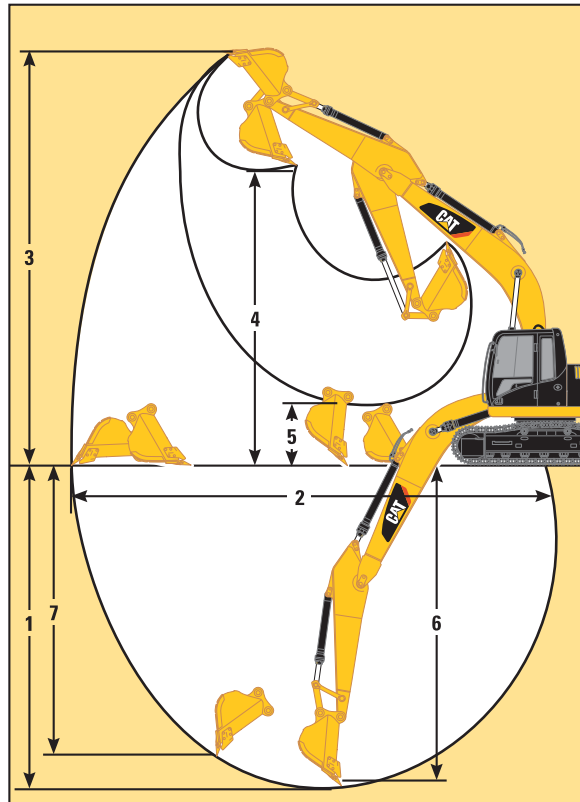
*Including shoe lug height.

**Without shoe lug height.

318D L Series 2 Hydraulic Excavator Specifications

Working Ranges

All dimensions are approximate.



Boom Options

HD Boom 5.1 m (16'9")

Stick Options

R2.9 m (9'6")

HD 2.6 m (8'6")

	R2.9 m (9'6")	HD 2.6 m (8'6")
1 Maximum Digging Depth	6380 mm (20'11")	6110 mm (20'0")
2 Maximum Reach at Ground Level	8980 mm (29'6")	8790 mm (28'10")
3 Maximum Cutting Height	8920 mm (29'3")	8930 mm (29'3")
4 Maximum Loading Height	6290 mm (20'8")	6260 mm (20'6")
5 Minimum Loading Height	2010 mm (6'7")	2290 mm (7'6")
6 Maximum Depth Cut for 2440 mm (8'0") Level Bottom	6140 mm (20'2")	5880 mm (19'3")
7 Maximum Vertical Wall Digging Depth	5100 mm (16'8")	5060 mm (16'7")
Bucket	GD 0.80 m ³ (1.00 yd ³)	SD 0.76 m ³ (0.99 yd ³)
Tip Radius	1360 mm (4'5")	1390 mm (4'6")

318D L Series 2 Hydraulic Excavator Specifications

Operating Weight and Ground Pressure

	600 mm (24") Triple Grouser Shoes	
	kg (lb)	kPa (psi)
HD Boom – 5.1 m (16'9")		
HD 2.6 m (8'6") ¹	17 800 (39,250)	42.2 (6.12)
R2.9 m (9'6") ²	17 700 (39,021)	41.7 (6.05)

¹Weights are rounded up to nearest 100 kg (220 lb) including SD 0.76 m³ (0.99 yd³) bucket (740 kg/1,630 lb).

²Weights are rounded up to nearest 100 kg (220 lb) including GD 0.80 m³ (1.00 yd³) bucket (680 kg/1,600 lb).

Major Component Weights

Base Machine (with boom cylinder, without counterweight, front linkage and track)	5330 kg (11,750 lb)
Long Undercarriage	3670 kg (8,090 lb)
Counterweight – 3.2 mt (3.5 t)	3170 kg (6,990 lb)
Boom (includes lines, pins and stick cylinder)	
HD Boom – 5.1 m (16'9")	1530 kg (3,370 lb)
Stick (includes lines, pins and bucket cylinder)	
R2.9 m (9'6")	850 kg (1,870 lb)
HD 2.6 m (8'6")	880 kg (1,940 lb)
Track Shoe (Long/per two tracks)	
600 mm (24") Triple Grouser	2420 kg (5,340 lb)

All weights are rounded up to nearest 10 kg and lb except for buckets. Kg and lb were rounded up separately so some of the kg and lb do not match.

Base machine includes 75 kg (170 lb) operator weight, 90% fuel weight, and undercarriage with center guard.

318D L Series 2 Hydraulic Excavator Specifications

Bucket and Stick Forces

Stick Options	HD Boom 5.1 m (16'9")	
	R2.9 m (9'6")	HD 2.6 m (8'6")
General Duty		
Bucket Digging Force (ISO)	111 kN (25,000 lbf)	—
Stick Digging Force (ISO)	75 kN (16,800 lbf)	—
Bucket Digging Force (SAE)	99 kN (22,300 lbf)	—
Stick Digging Force (SAE)	72 kN (16,186 lbf)	—
Severe Duty		
Bucket Digging Force (ISO)	—	111 kN (24,953 lbf)
Stick Digging Force (ISO)	—	80 kN (18,100 lbf)
Bucket Digging Force (SAE)	—	97 kN (21,806 lbf)
Stick Digging Force (SAE)	—	77 kN (17,310 lbf)

318D L Series 2 Bucket Specifications and Compatibility – China

Without Quick Coupler

	Width		Capacity		Weight		Fill	HD Boom		
	mm	in	m ³	yd ³	kg	lb		%	2.9	HD 2.6
									600 mm (24") TG	
General Duty (GD)	1100	43	0.80	1.04	624	1,376	100	⊙	⊙	
	1200	48	0.91	1.19	651	1,435	100			
Severe Duty (SD)	1050	42	0.76	1.00	692	1,526	90	●	●	
Maximum load pin-on (payload + bucket)								kg	2125	2170
								lb	4,684	4,783

With Center-Lock™ Quick Coupler

	Width		Capacity		Weight		Fill	HD Boom		
	mm	in	m ³	yd ³	kg	lb		%	2.9	HD 2.6
									600 mm (24") TG	
General Duty (GD)	1100	43	0.80	1.04	624	1,376	100			
	1200	48	0.91	1.19	651	1,435	100			
Severe Duty (SD)	1050	42	0.76	1.00	692	1,526	90			
Maximum load pin-on (payload + bucket)								kg	1735	1780
								lb	3,824	3,923

The above loads are in compliance with hydraulic excavator standard EN474, they do not exceed 87% of hydraulic lifting capacity or 75% of tipping capacity with front linkage fully extended at ground line with bucket curled.

Capacity based on ISO 7451.

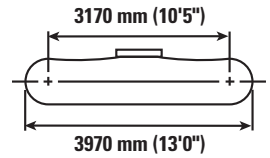
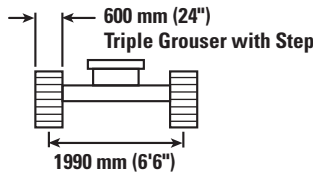
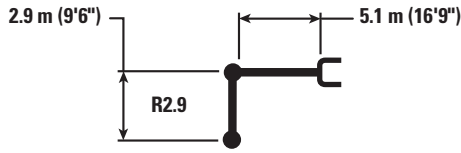
Bucket weight with General Duty tips.

Maximum Material Density:

- 2100 kg/m³ (3,500 lb/yd³)
- ⊙ 1800 kg/m³ (3,000 lb/yd³)
- ⊖ 1500 kg/m³ (2,500 lb/yd³)
- 1200 kg/m³ (2,000 lb/yd³)
- X Not Recommended

318D L Series 2 Hydraulic Excavator Specifications

Reach Boom Lift Capacities – Counterweight: 3.2 mt (3.5 t) – without Bucket



		1500 mm/60 in		3000 mm/120 in		4500 mm/180 in		6000 mm/240 in		7500 mm/300 in				mm in
7500 mm 300 in	kg lb											*2900 *6,500	*2900 *6,500	5090 200
6000 mm 240 in	kg lb							*3600 *7,350	3500 *7,350			*2650 *5,800	*2650 *5,800	6440 250
4500 mm 180 in	kg lb							*4050 *8,800	3400 7,300			*2550 *5,650	2500 5,500	7240 290
3000 mm 120 in	kg lb			*7950 *16,950	*7950 *16,950	*5500 *11,850	5000 10,750	*4550 *9,900	3250 7,000	*3300 *6,050	2300 4,900	*2650 *5,800	2200 4,850	7660 310
1500 mm 60 in	kg lb			*7100 *16,950	*7100 *16,950	*6850 *14,800	4600 9,900	4950 10,650	3050 6,600	3550 7,600	2200 4,750	*2850 *6,250	2100 4,600	7770 310
0 mm 0 in	kg lb			*7050 *16,150	*7050 *16,150	7400 15,900	4350 9,300	4800 10,300	2950 6,300	3500 7,600	2150 4,750	*3200 *7,050	2100 4,650	7580 300
-1500 mm -60 in	kg lb	*5700 *12,750	*5700 *12,750	*10 050 *22,900	7700 16,550	7250 15,600	4200 9,050	4700 10,150	2850 6,150			3750 8,250	2300 5,050	7070 280
-3000 mm -120 in	kg lb	*9300 *20,850	*9300 *20,850	*10 950 *23,650	7850 16,800	7300 15,650	4250 9,100	4750 10,200	2900 6,200			4600 10,150	2800 6,200	6160 240
-4500 mm -180 in	kg lb			*8400 *17,850	8100 17,450	*5600 12,340	4450					*5450 *12,000	4300 9,800	4600 180



ISO 10567



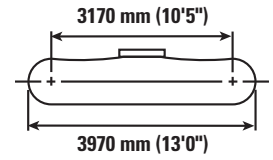
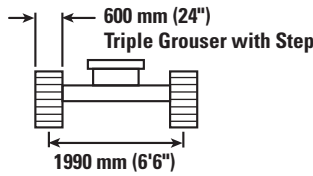
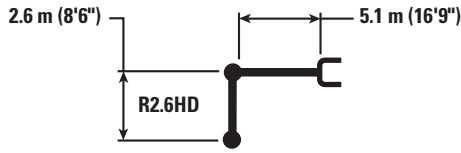
*Indicates that the load is limited by hydraulic lifting capacity rather than tipping load. The above loads are in compliance with hydraulic excavator lift capacity standard ISO 10567:2007. They do not exceed 87% of hydraulic lifting capacity or 75% of tipping load. Weight of all lifting accessories must be deducted from the above lifting capacities. Lifting capacities are based on the machine standing on a firm, uniform supporting surface. The use of a work tool attachment point to handle/lift objects, could affect the machine lift performance.

Lift capacity stays with ±5% for all available track shoes.

Always refer to the appropriate Operation and Maintenance Manual for specific product information.

318D L Series 2 Hydraulic Excavator Specifications

Reach Boom Lift Capacities – Counterweight: 3.2 mt (3.5 t) – without Bucket



		1500 mm/60 in		3000 mm/120 in		4500 mm/180 in		6000 mm/240 in		7500 mm/300 in				mm in
7500 mm 300 in	kg lb					*7,400	*7,400					*3250 *7,200	*3250 *7,200	4760 190
6000 mm 240 in	kg lb							*3500 *6,400	3400 *6,400			*2850 *6,250	*2850 *6,250	6180 240
4500 mm 180 in	kg lb					*4550 *9,850	*4550 *9,850	*4200 *9,200	3350 7,150			*2750 *6,000	2550 5,650	7010 280
3000 mm 120 in	kg lb			*8700 *18,550	*8700 *18,550	*5800 *12,450	4900 10,550	*4750 *10,250	3200 6,850			*2800 *6,100	2250 4,950	7450 300
1500 mm 60 in	kg lb					*7050 *15,250	4500 9,700	4900 10,500	3000 6,500	*3400	2150	*3000 *6,550	2150 4,700	7560 300
0 mm 0 in	kg lb			*6250 *14,350	*6250 *14,350	7350 15,750	4250 9,200	4750 10,200	2900 6,200			*3350 *7,400	2150 4,750	7370 290
-1500 mm -60 in	kg lb	*5700 *12,750	*5700 *12,750	*10 100 *23,050	7700 16,550	7250 15,500	4200 9,000	4700 10,050	2850 6,100			3900 8,600	2400 5,250	6840 270
-3000 mm -120 in	kg lb	*9950 *22,300	*9950 *22,300	*10 450 *22,650	7850 16,850	*7250 *15,600	4250 9,100					4900 10,850	2950 6,550	5890 230
-4500 mm -180 in	kg lb			*7500 *15,800	*7500 *15,800							*5250 *11,500	4900 11,200	4230 170



ISO 10567



*Indicates that the load is limited by hydraulic lifting capacity rather than tipping load. The above loads are in compliance with hydraulic excavator lift capacity standard ISO 10567:2007. They do not exceed 87% of hydraulic lifting capacity or 75% of tipping load. Weight of all lifting accessories must be deducted from the above lifting capacities. Lifting capacities are based on the machine standing on a firm, uniform supporting surface. The use of a work tool attachment point to handle/lift objects, could affect the machine lift performance.

Lift capacity stays with ±5% for all available track shoes.

Always refer to the appropriate Operation and Maintenance Manual for specific product information.

Standard Equipment

Standard equipment may vary. Consult your Cat dealer for details.

ENGINE

- Diesel engine – Cat C4.4 ACERT with electronic governor
 - 2300 m (7,545 ft) altitude capability
 - 50 amp alternator, air intake heater
 - Tier 3, Stage IIIA, Japan 2006 (Tier 3) equivalent or China Stage III Nonroad emission package biodiesel capable up to B20
- 10 micron fuel filter
- 4 micron fuel pre-filter
- One touch low idle with AEC
- Remote engine oil filter
- Radial seal air filter, double element
- Two speed travel
- Water separator in fuel line with indicator
- Waved fin radiator with side by side type oil cooler
- Fix type A/C condenser
- 53° C (127.4° F) High ambient cooling

CAB

- Bolt-on FOGS capability
- Openable front windshield with assist device
- Pillar mounted upper windshield wiper and washer
- Front windshield glass split by 70/30
- Cab sliding upper door window
- Rear window, emergency exit
- Removable lower windshield with in cab storage bracket
- Openable skylight/metal hatch
- Interior lighting
- Standard joystick
- Laminated front upper windshield
- Seat high back, mechanical suspension with head rest
- Seat belt, retractable, 50 mm (2")

- Floor mat
- Bi-level air conditioner (auto) with defroster
- Windshield washer
- Coat hook
- Ashtray and lighter
- Beverage holder
- Literature holder
- Utility space for magazine
- Radio mounting
- Mounting for two stereo speakers
- Antenna flexible type
- Storage compartment suitable for lunch box
- Monitor
 - Language display
 - Full graphic and full color display
 - Warning information
 - Filter/fluid change information
 - Machine condition
 - Error code and tool mode setting information
 - Full time clock on monitor
- Positive filtered ventilation
- Seat integrated control joystick
- Adjustable armrest
- Adjustable console
- Neutral lever (lock out) for all controls
- Travel control pedals with removable hand levers
- Capability of installing two additional pedals

UNDERCARRIAGE

- 600 mm (24") triple grouser shoes

ELECTRICAL

- Circuit breaker
- Cat battery

HYDRAULIC

- Hydraulic main pump
- High performance hydraulic return filter
- Regeneration control for boom and stick
- Boom lowering device for back up
- Boom drift reducing valve
- Stick drift reducing valve
- Reverse swing damping valve
- Automatic swing parking brake
- Auxiliary hydraulic valve
- Capability of stackable valves for main valve
- Capability of auxiliary circuit

SECURITY

- Cat one key security system
- Signaling/warning horn
- Mirrors, rearview (frame – right, cab – left)
- Secondary engine shutoff switch
- Door locks
- Cap locks on fuel and hydraulic tanks
- Lockable external tool/storage box

LIGHTS

- Halogen boom light (left side)
- Exterior lights integrated into storage box

COUNTERWEIGHT

- Counterweight without lifting eye (3170 kg/6,990 lb)

UNDERCARRIAGE

- Grease lubricated track (GLT2)
- Idler and center section track guiding guard
- Towing eye on base frame
- Standard idler tension spring
- Guard, standard bottom

318D L Series 2 Optional Equipment

Optional Equipment

Optional equipment may vary. Consult your Cat dealer for details.

ENGINE

- Cold weather batteries, -25° C (77° F)

HYDRAULIC

- Combined circuit
- Center-Lock quick coupler lines and control
- Joystick with modulation SW
- Boom and Stick high pressure, and quick couple line options

FRONT LINKAGE

- Heavy duty boom, 5.1 m (16'9")*
- Stick, 2.9 m (9'6")
- Heavy duty stick, 2.6 m (8'6")*
- Bucket linkage
- Quick coupler

LIGHTS

- Cab lights
- Halogen boom light (right side)

SECURITY

- Rearview camera and right side mirrors
- Cab mirror

TECHNOLOGY

- Product Link™, Cellular*

GUARDS

- FOGS (bolt on)
- Guard, heavy duty bottom
- Swivel guard

*Offering varies for different regions.

For more complete information on Cat products, dealer services, and industry solutions, visit us on the web at www.cat.com

AEHQ7907
(GN1)

© 2016 Caterpillar
All rights reserved

Materials and specifications are subject to change without notice. Featured machines in photos may include additional equipment. See your Cat dealer for available options.

CAT, CATERPILLAR, SAFETY.CAT.COM, their respective logos, "Caterpillar Yellow" and the "Power Edge" trade dress, as well as corporate and product identity used herein, are trademarks of Caterpillar and may not be used without permission.

