

D6K2

Track-Type Tractor



Engine

Engine Model	Cat® C4.4 ACERT™ with twin turbo
Emissions	Japan 2014 (Tier 4 Final)
Engine Power (Maximum)	
SAE J1995	119 kW
ISO 14396	117 kW

Engine (continued)

Rated Power (Net)	
SAE J1349	95 kW
ISO 9249	97 kW

Weight

Operating Weight	
XL	13 357 kg
LGP	14 135 kg



オフロード法2014年
基準適合

D6K2 Features

Cat Connect Technologies

Standard Cat Slope Indicate, Cat Stable Blade and Cat GRADE with Slope Assist help you get jobs done faster and more accurately. Optional GRADE technologies, like Cat Grade with 3D and Cat AccuGrade™, allow you to choose features that match your job site needs for scalability, capability and budget.

Power and Efficiency

A Cat C4.4 ACERT engine with twin turbochargers and new hydrostatic transmission to give you improved fuel efficiency and the most power-dense drive train in its size class. Eco Modes optimize engine speed, while maintaining ground speed, saving up to 17 percent fuel in lighter blade load applications like finish grading.

Optimized for Grading

The D6K2 features a new equalizer bar design, stiffer track roller frame and an undercarriage designed for a smooth ride. This helps you make the most of top grading speeds and integrated technology for optimal productivity in fine grading applications.



Contents

Power and Efficiency3

Operator Station.....4

Ease of Operation.....5

Emissions Technology5

Integrated Technologies.....6

Equipped for the Job8

Serviceability and Customer Support.....9

Specifications.....10

Standard Equipment.....14

Optional Equipment.....15

The new D6K2 dozer is smarter and more efficient than ever. It comes equipped with standard Grade technologies like Slope Assist to make it easier for even less experienced operators to get more quality work done in less time. But intelligence is only part of the package – Eco Modes and a new power train deliver up to 17 percent more fuel efficiency, while providing superior maneuverability, faster steering response and greater capability to utilize full blade loads. This dozer also retains its optimal balance and undercarriage design for outstanding performance in finish grading applications. The D6K2 meets Japan 2014 (Tier 4 Final) emission standards.



Power and Efficiency

Designed for performance

Powerful Drive Train

A Cat C4.4 ACERT engine with twin turbochargers is combined with a new hydrostatic transmission to give you improved fuel efficiency and the most power-dense drive train in its size class. The hystat transmission offers superior maneuverability, faster steering response and greater capability to utilize full blade loads.

Eco Modes

Eco Modes optimize engine speed, while maintaining ground speed, saving up to 17 percent fuel in lighter blade load applications like finish grading.

Reduced Idling

Efficiency features reduce engine speed when idling, or shut the machine down after a specified time, to further save fuel and meet idling regulations. Engine Idle Shutdown shuts down engine after pre-set time to reduce idling and help save fuel.

Traction Control

New automatic traction control is standard and automatically reduces track slip in poor underfoot conditions, improving productivity and finish surface quality.

Effective Cooling

Updated cooling package allows more air flow, reducing fan speed for greater efficiency. Hydraulic demand fan automatically reduces fan speed in cooler conditions to help save fuel. An optional hydraulic reversing fan offers automatic or manual modes for changing direction to blow debris out of the radiator cores.



Operator Station

Comfort and Productivity



Spacious, quiet cab offers all-day comfort with wide door openings and an air suspension seat. Ergonomic, seat-mounted joystick controls isolate vibration. Excellent visibility to the blade, curbs and tight spaces help you work more precisely.

The new Liquid Crystal Display (LCD) is easy to read, enables Slope Assist, and is rear-camera ready so no additional monitor is needed.

Implement and Steering Controls

- Single joystick for speed, direction and steering; includes thumb wheel for speed adjustment and traction control.
- Dozer/implement controls give you 6-way control of the VPAT blade and allows power pitch adjustment. Blade shake feature helps shed sticky material.
- Improved implement valve provides faster response. Intuitive, precise electro-hydraulic controls with sensitivity adjustment – fine, medium, coarse.
- Rear vision camera (O) for enhanced visibility behind the machine.
- Improved heating/ ventilation/air conditioning system cools faster; circulates air closer to the operator for more comfort.
- New bi-directional control (S) – dial preselected forward/reverse gears for reduced effort and improved efficiency. Save the settings as operator profile for even more convenience.
- Added comfort options like heated/ventilated seat and heated control handles.

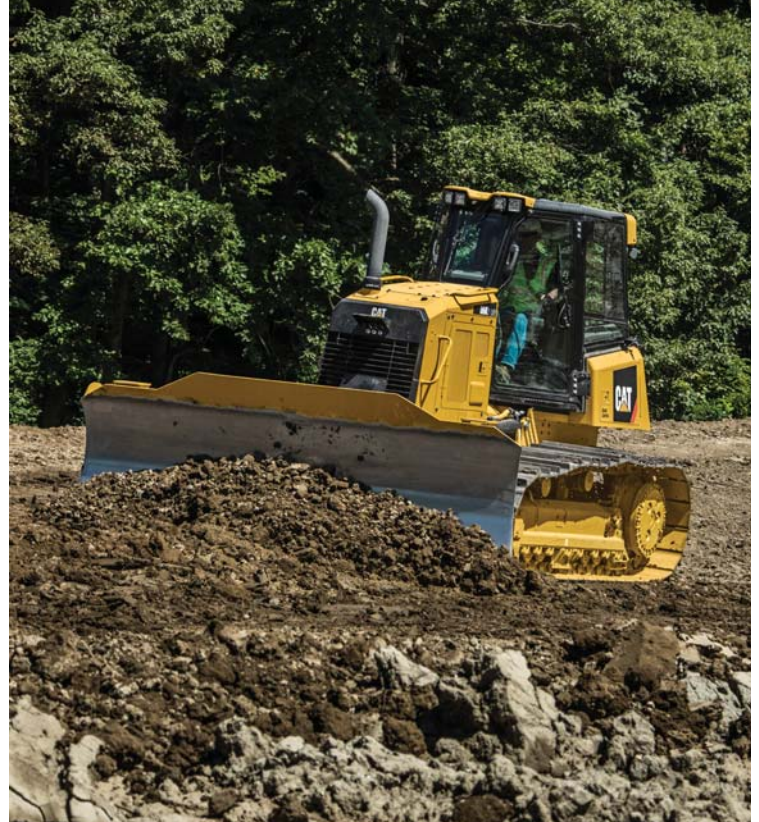


Ease of Operation

Intuitive and precise

Whether the D6K2 is a permanent part of your fleet or rented for the short term, operators will find this machine easy to operate.

- Technologies like Slope Assist and Stable Blade are integrated right into the dozer to help even less experienced operators achieve a quality grade more quickly, and with fewer inputs.
- Joystick controls are intuitive and precise.
- Machine balance and undercarriage are designed for faster finish grading.
- A rear vision camera is available to enhance visibility behind the machine.
- Machine width and folding blade option allow for easy transport.



Emissions Technology

Proven, integrated solutions



- Meets Japan 2014 (Tier 4 Final) emission standards.
- Emissions technology – no action required from the operator, no stopping for regeneration.
- Diesel Exhaust Fluid use typically about 2.5 percent of fuel consumption – provides excellent overall fluid efficiency.
- Diesel Particulate Filter designed for the life of the engine – no need to clean out.
- Pump automatically purges DEF lines to help prevent freezing.
- When refilling Diesel Exhaust Fluid, a tone will sound (with key on) when tank is nearly full.

Integrated Technologies

Monitor, manage and enhance job site operations



GRADE for Dozers

Cat Connect GRADE technologies help you hit target grade faster and more accurately. Finish jobs in fewer passes, and with less operator effort, saving you time and helping you increase profit.

Cat GRADE with Slope Assist (■) helps operators more easily achieve the required main-fall and slope orientation of the blade by automatically maintaining pre-established blade angles for the grade. The system saves time, increases finish quality and reduces operator input. Experienced operators can work more productively and less experienced operators can achieve better quality results more quickly.

Cat Slope Indicate (■) displays machine cross-slope and fore/aft orientation on the primary monitor, helping operators work more accurately on slopes.

Cat Stable Blade (■) complements the operator's blade-control input for attaining finish grades quicker with less effort.

Cat GRADE with 3D (● – available early 2017) is a factory integrated grade control system that enables operators to improve grading efficiency, accuracy, and productivity in both production dozing and fine-grading applications. The integrated design positions antennas on the cab roof, eliminating conventional blade-mounted masts and related cables. The AccuGrade Ready Option (ARO) is part of the package for added versatility, and AutoCarry™ is included to further boost productivity.

Cat AccuGrade (●) is a dealer-installed aftermarket grade-control system that provides increased grading versatility and the ability to scale capacity to changing needs, providing a choice of lasers for 2D flat-plane and slope work, Global Navigation Satellite System (GNSS) control for complex 3D cuts and contours, and/or systems using a Universal Total Station (UTS) for fine and finish grading.

AccuGrade Ready Option (ARO) (■) allows you to easily install or upgrade to AccuGrade 2D and 3D grade-control systems to add versatility and resale value to your machine.

(■) = Standard

(●) = Optional





LINK Technologies

LINK technologies provide wireless capability to machines enabling two-way transfer of information collected by on-board sensors, control modules, and other Cat Connect technologies using off-board apps, such as our VisionLink® software.

Product Link™/VisionLink

Product Link takes the guesswork out of equipment management. Track location, hours, fuel usage, productivity, idle time, and diagnostic codes through the online VisionLink interface. Manage your fleet in real time so you can maximize efficiency, improve productivity, and lower operating costs.

Cat Connect makes smart use of technology and services to improve your job site efficiency. Using the data from technology equipped machines, you'll get more information and insight into your equipment and operations than ever before.

Cat Connect services are also available from your dealership including:



Equipment Management – increase uptime and reduce operating costs.



Productivity – monitor production and manage job site efficiency.



Safety – enhance job site awareness to keep your people and equipment safe.



Blades

- Rugged Variable Pitch Angle Tilt (VPAT) blade allows you to hydraulically adjust lift, angle and tilt for precise results.
- Wide blade helps you get more work done in less time.
- Blade shake feature for easy removal of material.
- Folding blade option helps limit transport width.
- Power pitch option lets you easily adjust blade to optimum pitch for your application using buttons on the right hand control.

Equipped for the Job

Optimize your machine

Rear Implements

To help you match your dozer to the task at hand, you can outfit your D6K2 with a multi-shank parallelogram ripper, winch or drawbar. A dual control package makes it simple to utilize either a ripper or winch.

Ask your Cat dealer for available options to help you optimize your machine for the work you do.

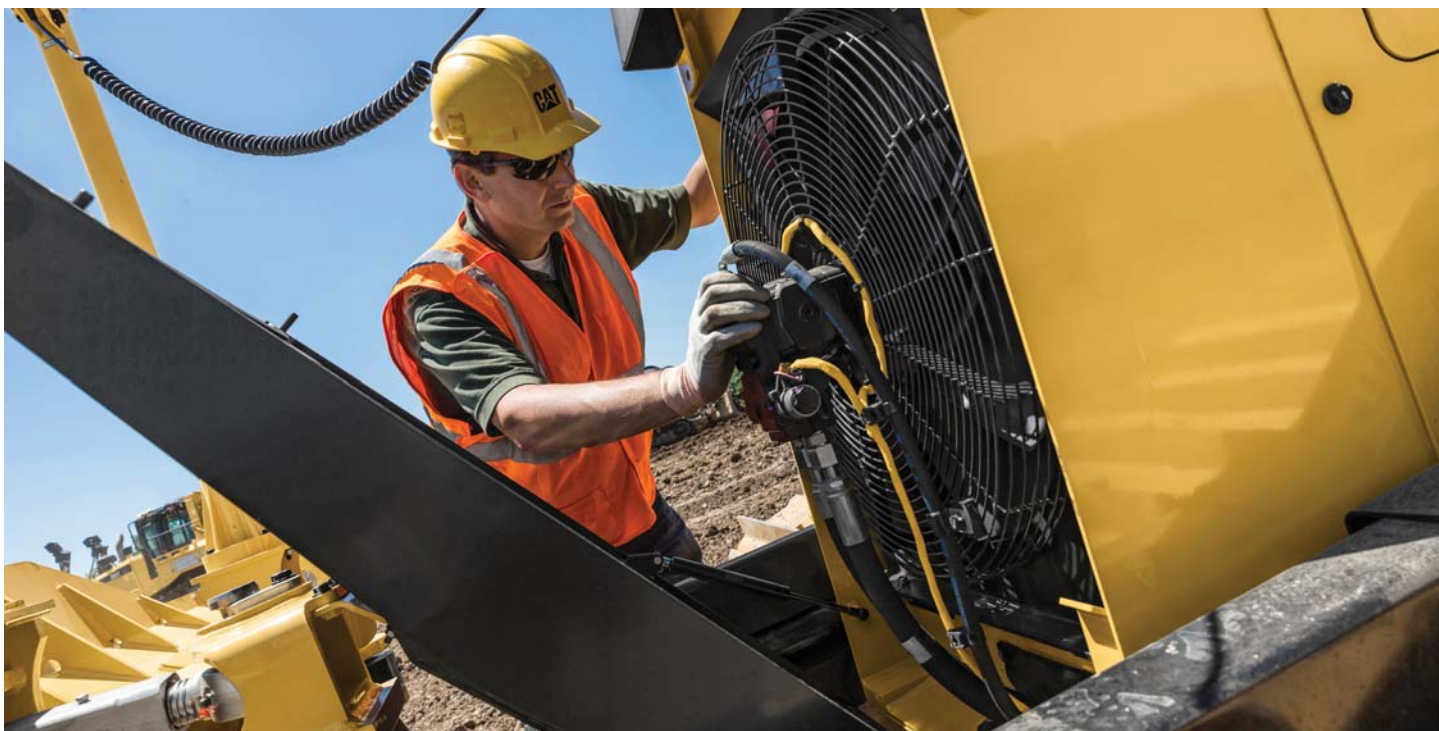
Forestry Arrangement

Specialized arrangement includes a forestry blade, hydrostatic winch, 360 degree guarding for added protection of the cab and a heavy-duty rear tank guard.



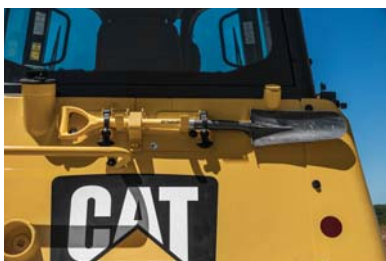
Undercarriage

- Optimized undercarriage – eight bottom rollers/two carrier rollers for smoother ride and improved finish grading. New equalizer bar design supports faster fine grading speed.
- Choose Heavy Duty undercarriage for aggressive applications like land clearing, side-slopes or rocky terrain.
- Choose SystemOne™ undercarriage that is designed to work and wear as a system for longer life and lower costs in abrasive or low/moderate impact applications.
- A broad choice of track shoe designs and widths help you further optimize your machine for performance and longer life.



Serviceability and Customer Support

When uptime counts



Long service intervals and easy maintenance keep the machine up and running to help lower your owning and operating costs.

- Large, hinged door on the left side of the engine compartment for easy access to all regular engine maintenance points.
- Larger access panel to engine oil filter and new panel for easy access to fuel filter.
- Easy ground-level access to hydraulic filters located in the left rear service compartment.
- Grouped maintenance and diagnostic points.
- Ground level access to Diesel Exhaust Fluid fill.
- Updated track roller frame design for easier cleanout.
- Optional bracket mounts to rear of machine to keep a shovel handy.
- Optional onboard refueling pump is designed to make remote fueling from a fuel drum safer and faster.

D6K2 Track-Type Tractor Specifications

Engine

Engine Model	Cat C4.4 ACERT with twin turbo
Emissions	Japan 2014 (Tier 4 Final)
Engine Power (maximum)	
SAE J1995	119 kW
ISO 14396	117 kW
Rated Power (Net)	
SAE J1349	95 kW
ISO 9249	97 kW
Bore	105 mm
Stroke	127 mm
Displacement	4.4 L

- Japan 2014 (Tier 4 Final) diesel engines are required to use only Ultra Low Sulfur Diesel (ULSD) fuels containing 15 ppm EPA/10 ppm EU (mg/kg) sulfur or less. Cat DEO-ULS™ or oils that meet the Cat ECF-3, API CJ-4, and ACEA E9 specification are required. Consult your OMM for further machine specific fuel recommendations.
- Diesel Exhaust Fluid used in Cat Selective Catalytic Reduction (SCR) systems must meet the requirements outlined in the International Organization for Standardization (ISO) standard 22241.
- Engine ratings at 2,200 rpm
- Net power advertised is the power available at the engine flywheel when the engine is equipped with the air cleaner, alternator, A/C compressor at full load and cooling fan at maximum speed.
- No engine derating required up to 3000 m altitude; beyond 3000 m automatic derating occurs.

Transmission – Travel Speed

Transmission Type	Hydrostatic
Forward	0-10 km/h
Reverse	0-10 km/h

Service Refill Capacities

Fuel Tank	260 L
DEF Tank	19 L
Cooling System	30 L
Engine Crankcase	11 L
Final Drives (each XL and LGP)	18.5 L
Hydraulic Tank	64 L

Weights

Operating Weight	
XL	13 357 kg
LGP	14 135 kg
Shipping Weight	
XL	13 095 kg
LGP	13 873 kg

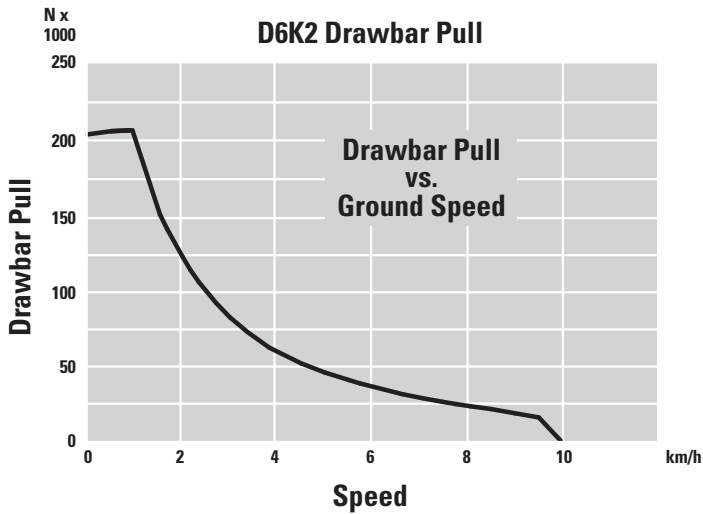
- Operating weights: includes EROPS, A/C, lights, VPAT Dozer, transmission, drawbar, engine enclosure, 3-valve hydraulics, 100% fuel, Cat Comfort Series air suspension seat and operator.
- Shipping weights: includes EROPS, A/C, lights, VPAT Dozer, transmission, drawbar, engine enclosure, 3-valve hydraulics, 10% fuel, Cat Comfort Series air suspension seat.

Undercarriage

Width of Shoe	
XL	560 mm
LGP	760 mm
Shoes/Side – XL/LGP	40
Grouser Height	
MS Shoe	48 mm
ES Shoe	57 mm
Curve APEX Shoe	66 mm
Track Gauge	
XL	1770 mm
LGP	2000 mm
Track on Ground – XL/LGP	2645 mm
Ground Contact Area	
XL	2.96 m ²
LGP	4.02 m ²
Ground Pressure	
XL	44.2 kPa
LGP	34.5 kPa
Track Rollers/Side – XL/LGP	8

D6K2 Track-Type Tractor Specifications

Drawbar Pull



Blades

Blade Type	VPAT, VPAT Foldable*
Blade Capacity	
XL, VPAT	3.26 m ³
LGP, VPAT	3.81 m ³
Blade Width Over End Bits	
XL, VPAT	3196 mm
LGP, VPAT	3682 mm

*VPAT foldable blades have the same capacity and width as the XL/LGP VPAT blades.

Ripper

Type Fixed	Parallelogram
Pocket Spacing	896 mm
Shank Gauge	1792 mm
Shank Section	58.5 × 138 mm
Number of Pockets	3
Overall Beam Width	1951 mm
Beam Cross Section	165 × 211 mm
Maximum Penetration Force	
XL	42.2 kN
LGP	45.1 kN
Maximum Pry-out Force	
XL	166.7 kN
LGP	166.7 kN
Maximum Penetration – XL and LGP	360 mm
Weight with One Shank	845 kg
Each Additional Shank	34 kg

Winch

Winch Model	PA50
Winch Drive	Hydrostatic
Weight*	907 kg
Winch and Bracket Length	845 mm
Winch Case Width	740 mm
Drum Diameter	205 mm
Drum Width	274 mm
Flange Diameter	457 mm
Drum Capacity (recommended rope)	93 m
Drum Capacity (optional rope)	67 m
Rope Recommended Diameter	19 mm
Optional Cable Size	22 mm
Cable Ferrule Size (O.D.)	54 mm
Cable Ferrule Size (length)	67 mm
Maximum Bare Drum	
Line Pull	222.4 kN
Line Speed	38 m/min
Maximum Full Drum	
Line Pull	115.7 kN
Line Speed	70 m/min

*Weight includes: pump, operator controls, oil, mounting brackets and spacers.

D6K2 Track-Type Tractor Specifications

Standards

ROPS/FOPS

- ROPS (Rollover Protective Structure) offered by Caterpillar for the machine meets ROPS criteria ISO 3471:2008.
- FOPS (Falling Object Protective Structure) meets ISO 3449-2005 Level II.

Brakes

- Brakes meet the standard ISO 10265:2008.

Sound and Vibration Information

- The declared dynamic operator sound pressure level is 76 dB(A) when “ISO 6396:2008” is used to measure the value for an enclosed cab. The measurements were conducted at the maximum engine cooling fan speed. The sound level may vary at different engine cooling fan speeds. The cab was properly installed and maintained. The measurements were conducted with the cab doors and the cab windows closed.

NOTE: The dynamic operator sound pressure level uncertainty is ± 2 dB(A).

- Hearing protection may be needed when the machine is operated with an open operator station, in a noisy environment, or with a cab that is not properly maintained.
- The guaranteed exterior sound power level is 109 dB(A) when the value is measured according to the dynamic test procedures and the conditions that are specified in “ISO 6395:2008.” The measurements were conducted at the maximum engine cooling fan speed. The sound level may vary at different engine cooling fan speeds.

Sound Level Information for Machines in European Union Countries and in Countries that Adopt the “EU Directives.”

The information below applies to only the machine configurations that have the “CE” mark on the Product Identification Plate.

- If equipped, the certification label – 109 dB(A) – is used to verify the environmental sound certification of the machine to the requirements of the European Union. The value that is listed on the label indicates the guaranteed exterior sound power level (L_{WA}) at the time of manufacture for the conditions that are specified in “2000/14/EC.”

Sustainability

Engine Emissions

- Fully complies with Japan 2014 (Tier 4 Final) emission standards

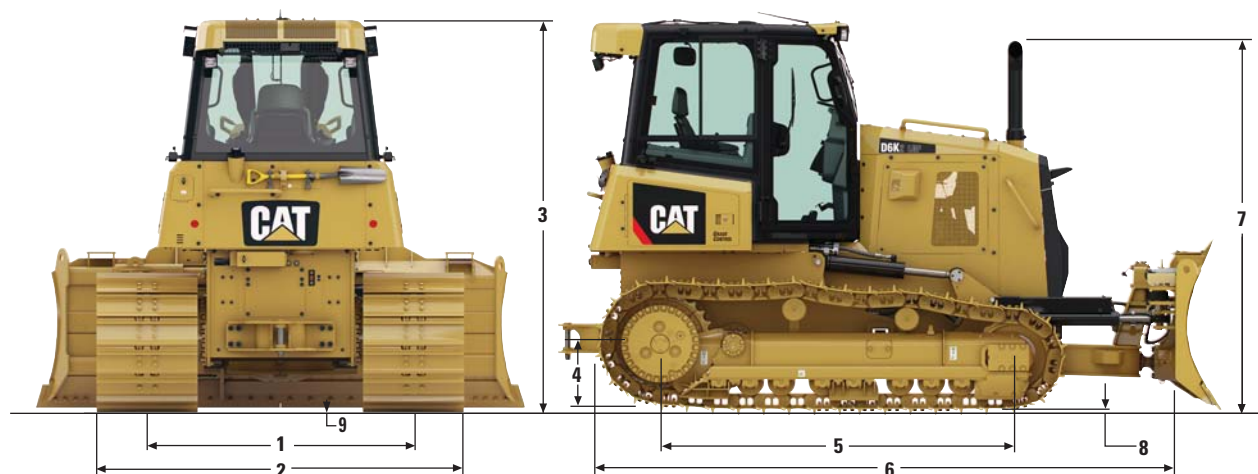
Vibration Levels

- The hand/arm vibration of this machine is below 2.5 m/s^2 , for an experienced operator in a dozing application.

D6K2 Track-Type Tractor Specifications

Dimensions

All dimensions are approximate.



Tractor Dimensions

	XL	LGP
1 Track Gauge	1770 mm	2000 mm
2 Width of Tractor		
With the Following Attachments:		
Standard Shoes without Blade	2330 mm	2760 mm
Standard Shoes with VPAT Blade Angled 25°	2896 mm	3337 mm
Standard Shoes with Foldable Blade in Transport Position	2364 mm	2850 mm
3 Machine Height from Tip of Grouser (ROPS cab)	2965 mm	3005 mm
4 Drawbar Height (center of clevis)		
From Ground Face of Shoes	517 mm	517 mm
5 Length of Track on Ground	2645 mm	2645 mm
6 Length of Basic Tractor (with C-frame/drawbar)	4618 mm	4618 mm
With the Following Attachments, Add to Basic Tractor Length:		
Ripper	815 mm	815 mm
PA50 Winch	354 mm	354 mm
VPAT Blade, Straight	382 mm	382 mm
VPAT Blade, Angled 25° (standard and foldable)	1012 mm	1012 mm
7 Height Over Stack from Tip of Grouser	2840 mm	2880 mm
8 Height of Grouser		
MS Shoes	48 mm	48 mm
ES Shoes	57 mm	57 mm
9 Ground Clearance from Ground Face of Shoe (per SAE J1234)	350 mm	358 mm

D6K2 Standard Equipment

Standard Equipment

Standard equipment may vary. Consult your Cat dealer for details.

POWER TRAIN

- Cat C4.4 ACERT diesel engine turbocharged
- Meets Japan 2014 (Tier 4 Final) emission standards
- Aftercooler, Air to Air (ATAAC)
- Glowplug starting aid
- 3000 meter altitude operation capability without derating
- Hydraulically driven, variable speed fan
- Aluminum bar plate cooling system (radiator, power train, aftercooler)
- Air cleaner with integrated precleaner, dust ejector and under hood air intake
- Dual path, electronic control, closed-loop hydrostatic transmission
- Electric fuel priming pump
- Fuel/water separator
- Automatic Traction Control
- Programmable/selectable bi-directional speed control
- Engine Idle Shutdown
- Auto Engine Speed Control

TECHNOLOGY PRODUCTS

- Cat GRADE with Slope Assist
- Cat Stable Blade
- Cat Slope Indicate
- Product Link* ready cellular or satellite
- AccuGrade Ready

UNDERCARRIAGE

- SystemOne or Heavy Duty undercarriage
- Center tread, sprocketed idler with SystemOne, standard idler with HD
- Lifetime lubricated track rollers (8) and idlers
- Carrier rollers (2)
- Hydraulic track adjusters
- Guards, front/rear guiding
- Replaceable sprocket rim segments

HYDRAULICS

- Three valve hydraulics
- Load sensing hydraulics

ELECTRICAL

- Horn
- Back-up alarm
- 12V converter, 10A
- Diagnostic connector
- Batteries, heavy duty, maintenance free, 900 CCA
- Integrated lights (4 front, 2 rear)
- 100 Amp alternator (24 volt)
- 24V electric starter

OPERATOR ENVIRONMENT

- ROPS/FOPS Cab
- Integrated A/C with automatic temperature control
- Seat, air suspended, cloth for cab
- Seat belt, retractable, 76 mm
- Foot pads, dash
- Color graphic, 7 in
- Travel speed limiter, electronic
- Engine RPM and gear display
- Hour meter, electronic
- Engine air cleaner service indicator, electronic
- Water-in-fuel indicator, electronic
- Throttle switch, rotary
- Eco mode
- Controls, seat mounted, fore/aft adjustment
- Armrests, adjustable
- Mirror, rearview, inside
- Single pedal combining deceleration and braking functions
- Independent forward/reverse speed settings
- Power port, 12 volt
- Coat hook
- Storage compartment
- Cup holder
- Floor mat, rubber, heavy duty
- Intermittent wiper
- Radio, AM/FM/AUX/USB/Bluetooth

FLUIDS

- Antifreeze coolant (–37° C)
- Extended life coolant

OTHER STANDARD EQUIPMENT

- C-frame, variable pitch link, hydraulic cylinders and lines
- Engine enclosures
- Hinged radiator louvered grill
- Swing-out radiator fan
- Front pull device
- Rigid drawbar
- Vandalism protection
- Ecology drains (engine, power train and implement oil, engine coolant)
- Scheduled Oil Sampling (S·O·SSM) ports (engine, power train and implement oil)
- Heavy duty crankcase guard

INSTRUCTIONS

- Warning decals

*Product Link licensing not available in all areas. Please consult your Cat dealer for details.

Optional Equipment

Optional equipment may vary. Consult your Cat dealer for details.

POWER TRAIN

- Fan, demand, reversing

UNDERCARRIAGE

- XL, SystemOne
- XL, Heavy Duty
- LGP, SystemOne
- LGP, Heavy Duty

TRACKS (40 SECTIONS)

- Track Pairs, XL, SystemOne
 - Track, 510 mm, Moderate Service, XL
 - Track, 510 mm, Extreme Service, XL
 - Track, 560 mm, Moderate Service, XL
 - Track, 560 mm, Extreme Service, XL
- Track Pairs, XL, Heavy Duty
 - Track, 510 mm, Extreme Service, XL
 - Track, 560 mm, Extreme Service, XL
- Track Pairs, LGP, SystemOne
 - Track, 760 mm, Moderate Service, LGP
 - Track, 760 mm, Extreme Service, LGP
- Track Pairs, LGP, Heavy Duty
 - Track, 760 mm, Extreme Service, LGP
 - Track, 760 mm, Self-Cleaning, LGP

TRACK GUIDING GUARDS

- Guard, track guiding, center
- Guard, track guiding, front/rear
- Guard, track guiding, full length

OPERATOR ENVIRONMENT

- Cab, Comfort Package
- Cab, Comfort Package, Heavy Duty
- Suspension seat, heated and ventilated with heated joystick handles
- Visibility kit, single rear vision camera

GUARDS AND PROTECTION

- Cab, protection package
- Screen, rear
- Protection package, standard
- Protection package, front
- Protection package, heavy duty

BLADES

- Blade, 3196 mm ARO XL
- Blade, 3196 mm Foldable ARO XL
- Blade, 3684 mm ARO LGP
- Blade, 3684 mm Foldable ARO LGP
- Mechanical blade pitch
- Blade power pitch

REAR ATTACHMENTS

- Drawbar
- Ripper, straight teeth
- Ripper, curved teeth
- Counterweight, rear
- Counterweight, additional slabs

REAR ATTACHMENT CONTROL

- Ripper control
- Winch control
- Ripper and winch control
- Ripper and Power Pitch control
- Ripper, Winch and Power Pitch control

TECHNOLOGY PRODUCTS

- Cat GRADE with 3D (available early 2017)
- Product Link Cellular
- Product Link Satellite
- Product Link Cellular and Satellite

FUEL SYSTEMS

- Fuel tank, fast fuel and refill ready

WEATHER PACKAGES AND STARTERS

- Cold Weather Package, 120V
- Cold Weather Package, 240V
- Electrical insulated breather
- Starter standard
- Starter high speed, low temperature

FLUIDS

- Antifreeze, –50° C

ELECTRICAL

- Beacon, rotating

FIELD INSTALLED ATTACHMENTS

- Winch and fairleads
 - PA50 winch, variable speed
 - Fairlead, three rollers
 - Kit, conversion, 4th roller
 - Winch step

MAINTENANCE AND RELATED ATTACHMENTS

- Shovel holder
- Fuel pump, refilling
- Oil change system, high speed

For more complete information on Cat products, dealer services, and industry solutions, visit us on the web at www.cat.com

AEHQ7971 (12-2016)

© 2016 Caterpillar
All rights reserved

Materials and specifications are subject to change without notice. Featured machines in photos may include additional equipment. See your Cat dealer for available options.

CAT, CATERPILLAR, SAFETY.CAT.COM, their respective logos, "Caterpillar Yellow" and the "Power Edge" trade dress, as well as corporate and product identity used herein, are trademarks of Caterpillar and may not be used without permission.

VisionLink is a trademark of Trimble Navigation Limited, registered in the United States and in other countries.

Based on the Labor, Safety and Health Laws in Japan, employer of small construction equipment are required to provide specific training for all operators on machines with ship weight less than 3 metric ton. For machines greater than 3 metric ton, operator needs to obtain operator license certification from a Government approved registered training school.

