

336F/F L XE

Hydraulic Excavator

2017



*写真は海外仕様機でオプション品を含みます。

Engine

Engine Model
Power – SAE J1995
Power – SAE J1349

Cat® C9.3 ACERT™
238 kW (319 hp)
228 kW (306 hp)

Drive

Maximum Travel Speed 4.8 km/h
Maximum Drawbar Pull 294 kN

Weights

Minimum Weight 34 700 kg
Maximum Weight 36 700 kg



オフロード法2014年
基準適合

The 336F/F L XE is the latest machine from Caterpillar that will significantly lower your owning and operating costs.

Built with our proven hydraulic hybrid system, this excavator will cut your fuel consumption by up to 12% compared to our standard 336E – a market leader in and of itself for high efficiency.

Unlike models from other manufacturers, the 336F XE is loaded with productivity boosting technology that will help improve your bottom line even more. Technologies like the new Cat Production Measurement Payload system, the Cat Grade with Assist, Cat Grade 3D, and Product Link™ come standard on this machine – all to help you easily do work more quickly and efficiently.

So if you are looking for the absolute maximum level of productivity and efficiency from a 36-ton machine, look no further than the 336F XE.

Contents

Equipping Every Customer For Success4

Cat Hybrid Technology6

Fuel Efficient8

Reliable and Productive9

Easy to Operate10

Durable Structures12

Durable Linkages13

Versatile14

Cat Connect Technologies.....16

Safe Work Environment18

Serviceable19

Sustainable20

Complete Customer Care.....20

Specifications.....21

Standard Equipment.....26

Optional Equipment.....27





CAT

336F

L XE

HYBRID

GRADE CONTROL

Equipping Every Customer for Success

Building products just for you and your type of work.





Understanding your needs and requirements leads us to developing innovative products – products that help you win in a competitive environment. The 336F XE with hydraulic hybrid technology is the latest example of such an innovative product. This excavator is built for those of you who work machines long and hard and need the absolute highest level of productivity. When you see XE on a Cat machine, you can count on it being the most technologically advanced, fuel-efficient machine capable of working in all applications and material types.

Caterpillar also offers a traditional 336F model. This machine is built for those of you who also get paid by the job and are looking for a high level of productivity. Even though it isn't equipped with hydraulic hybrid technology, the 336F provides excellent fuel efficiency and productivity compared to competitive offerings.

So when you think of XE, think of the following attributes:

- Reliable, durable, and rebuildable
- Low cost per unit of work
- Breakthrough and innovative
- Maximum efficiency

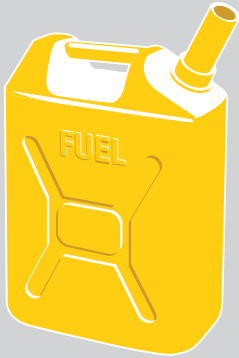
When you think of the traditional model, think of these attributes:

- Reliable, durable, and rebuildable
- Low cost per unit of work
- Proven
- Highly efficient

No matter which model you choose, if it has the Cat brand on it, you can depend on it being a quality-made machine backed by the world's finest product support.

Cat Hybrid Technology

The more it works, the more you save.



Up to
13%
less fuel consumption
than 336F – the fuel
economy and performance
leader in its size class



- 1 – Hydraulic Hybrid Swing System
- 2 – Electronic Standardized Programmable (ESP) Pump
- 3 – Adaptive Control System (ACS) Valve



The 336F XE uses three building block technologies to deliver outstanding fuel savings and performance for you:

- The Cat Electronic Standardized Programmable (ESP) pump smoothly transitions between the hydraulic hybrid power sources, engine, and accumulator to conserve fuel.
- The Cat Adaptive Control System (ACS) valve optimizes performance by intelligently managing restrictions and flows to control machine motion.
- Instead of wasting kinetic energy during swing braking, the Cat Hydraulic Hybrid Swing System pressurizes the accumulator to stop the machine and then uses that pressure when needed to accelerate the machine later.

Bottom line: The hydraulic hybrid system is a simple, reliable, and cost-effective solution that will help you significantly reduce your cost per ton.

Our Smart Valve Is Smart For You

The 336F L XE's hydraulic hybrid system is unlike hybrid systems available from any other heavy equipment manufacturer in business today. The key ingredient is the ACS valve, which you can find only on the Cat brand.

Think of the ACS valve as the "brain" of the system – one that independently controls machine functions and directs hydraulic energy where you need it precisely when you need it. Because the ACS valve is fully integrated with the pump and hybrid system, you will experience the same extraordinary control, hydraulic power, and lift capacity that you get from our traditional high-production machines with the added benefit of dramatically reduced fuel consumption. That's why we are now offering the valve on our larger machines like the 374F and 390F.

Smart valve. Smart machine. Simply a smart investment for your business.

Fuel Efficient

Engineered to lower your operating costs.



The Cat C9.3 ACERT engine meets Japan 2014 (Tier 4 Final) emission standards and it does so without interrupting your job process. Simply turn the engine on and go to work. It will look for opportunities in your work cycle to regenerate itself, and it will give you plenty of power for the task at hand – all to help keep your owning and operating costs to an absolute minimum.

A Smart Design for Any Temperature

The 336F/L XE features a side-by-side cooling system that allows you to put the machine to work in extremely hot and cold conditions. The system is completely separated from the engine compartment to reduce noise and heat. Plus it features easy-to-clean cores and a new variable-speed fan that reverses to blow out unwanted debris that may accumulate during your work day.

Proven Technology

The right technologies fine-tuned for the right applications result in:

- **Improved Fuel Efficiency** over Japan 2011 (Tier 4 Interim) products.
- **High Performance** across a variety of applications.
- **Enhanced Reliability** through commonality and simplicity of design.
- **Maximized Uptime and Reduced Cost** with world-class support from the Cat dealer network.
- **Minimized Impact of Emission Systems** – designed to be transparent to the operator without requiring interaction.
- **Durable Designs** with long life to overhaul.
- **Delivering Better Fuel Economy** with minimized maintenance costs while providing the same great power and response.



Reliable and Productive
Power to move your material with speed
and precision.

Hydraulic Horsepower, a Cat Advantage

Hydraulic horsepower is the actual machine power available to do work through implements and work tools. It's much more than just the engine power under the hood – it's a core strength that differentiates Cat machines from other brands. In fact, pump and other system components work to put more power to the ground, in a highly controlled, user-friendly way. This means you will move more material in less time and keep more money in your pocket at the end of the day.

Control Like No Other

Controllability is one of the main attributes of Cat excavators, and one of the key contributors to this is the main control valve. The valve opens slowly when your range of joystick lever movement is small and opens rapidly when movement is high. It puts flow where you need it when you need it, which leads to smoother operation, greater efficiency, and lower fuel consumption.

Auxiliary Hydraulics For Added Versatility

Auxiliary hydraulics give you greater tool versatility so you can take on more work with just one machine, and there are several options from which you can choose.

Easy to Operate

Comfort and convenience to keep you productive all day long.



Safe and Quiet Cab

Operators will enjoy the quietness and comfort of the all new cab thanks to special viscous mounts and special roof lining and sealing that limit vibration and unnecessary sound.

Excellent Ergonomics

Wide seats with air suspension and heat/cooling options, include a reclining back, upper and lower slide adjustments, and height and tilt angle adjustments to meet your needs for maximum comfort.

The fully automatic climate control system keeps operators comfortable and productive all day long in either hot or cold weather.

Storage spaces are located in the front, rear, and side consoles of the cab. A drink holder accommodates a large mug, and a shelf behind the seat stores large lunch or toolboxes.

Power supply sockets are available for charging your electronic devices like an MP3 player, a cell phone, or even a tablet.

Controls Just for You

The right and left joystick consoles can be adjusted to improve your comfort and productivity during the course of a day. The right joystick features a button that will reduce engine speed when you are not working to help save fuel. Touch it once and speed reduces; touch it again and speed increases for normal operation.



Easy to Navigate Monitor

The new LCD monitor is easy to see and navigate. Not only can it memorize up to 10 different work tools, it's also programmable in up to 44 languages to meet today's diverse workforce. The monitor clearly displays critical information you need to operate efficiently and effectively. Plus it projects the image from the rearview camera to help you see what's going on around you so you can stay safely focused on the job at hand.

Durable Structures

Made to work in your tough, heavy-duty applications.



Stable Undercarriage

The undercarriage contributes significantly to outstanding stability and durability.

Track shoes, links, rollers, idlers, and final drives are all built with high-tensile strength steel for long-term durability.

Cat Grease Lubricated Track 2 (GLT2) track link protects moving parts by keeping water, debris, and dust out and grease sealed in, which delivers longer wear life and reduced noise when traveling.

Optional guide guards help maintain track alignment to improve the machine's overall performance – whether you're traveling on a flat, heavy bed of rock or a steep, wet field of mud.

Robust Frames

You can expect excellent quality, reliability, and durability with the 336F XE. The machine's lower and upper frames are built to handle a hard day's work over and over again.

Great Weight

The counterweight is built with thick steel plates and reinforced fabrications to make it less susceptible to damage, designed with curved surfaces that match the machine's sleek, smooth appearance along with integrated housings to help protect the rearview camera.



Durable Linkages

Options to take on your far-reaching
or up-close tasks.

Booms and Sticks For Any Job

The 336F/F LXE is offered with a range of booms and sticks. Each is built with internal baffle plates and is stress relieved for added durability, and each undergoes ultrasound inspection to ensure quality and reliability. Large box-section structures with thick, multi-plate fabrications, castings, and forgings are used in high-stress areas such as the boom nose, boom foot, boom cylinder, and stick foot to improve durability. Also, the boom nose pin retention method is a captured flag design for enhanced durability.

The Reach boom and sticks offer you excellent all-around versatility for general excavations work like multipurpose digging and loading.

The Mass boom and sticks offer your enhanced performance in heavy-duty material like rock. They provide higher digging forces due to special boom and stick geometry, and bucket linkage and cylinders are built for greater durability.

Pins

All front linkage pins have thick chrome plating, giving them high wear resistance. Each pin diameter is made to distribute the shear and bending loads associated with the stick and to help ensure long pin, boom and stick life.

Talk to your Cat dealer to pick the best front linkage for your applications.

Versatile

Do more jobs with one machine.





Get the Most from One Machine

The Cat combination of machine and tool provides a total solution for just about any application.

Change Jobs Quickly

Available tool control remembers pressures and flows for up to 10 tools. Simply toggle through the monitor, select the tool, and go to work for maximum efficiency.

Dig, Rip and Load

A wide range of buckets dig everything from basic top soil to extreme, harsh material like ore and high quartzite granite. Rip through rock as an alternative to blasting in quarries. High-capacity buckets load trucks in a minimum number of passes for maximum productivity.

Break, Demolish and Scrap

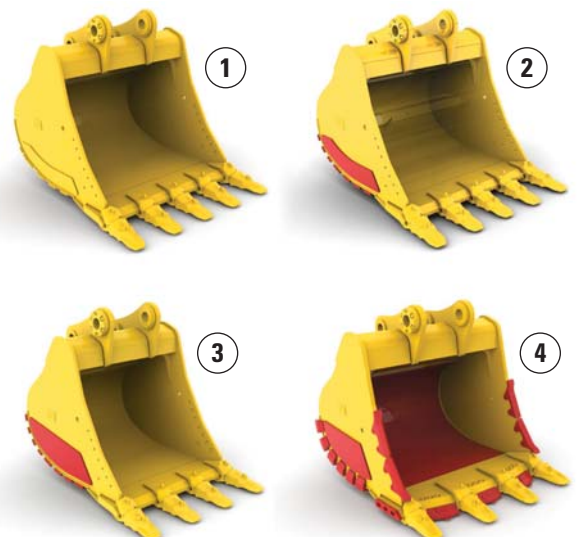
A hydraulic hammer ably equips your machine for breaking rock in quarries. It will also make taking down bridge pillars and heavily reinforced concrete on road demolition jobs no problem.

Multi-processor and pulverizer attachments make your machine ideal for demolition jobs and processing the resulting debris.

Shears with 360° rotation mount to the machine for processing scrap steel and metal.

Set Up Your Machine for Profitability

Your Cat dealer can install hydraulic kits to properly operate all Cat Work Tool attachments, maximizing the machine's uptime and your profit. All Cat Work Tool attachments are supported by the same Cat dealer network as your Cat machine.



1) General Duty (GD) 2) Heavy Duty (HD)
3) Severe Duty (SD) 4) Extreme Duty (XD)

Cat Connect Technologies

Monitor, manage, and enhance job site operations.



Cat Connect makes smart use of technology and services to improve your job site efficiency. Using the data from technology-equipped machines, you'll get more information and insight into your equipment and operations than ever before.

Cat Connect technologies offer improvements in these key areas:



Equipment Management – increase uptime and reduce operating costs.



Productivity – monitor production and manage job site efficiency.



Safety – enhance job site awareness to keep your people and equipment safe.

PAYLOAD Technologies

Payload technologies accurately measure material being loaded or hauled. Payload data is shared with operators in real time to improve productivity, reduce overloading, and record progress.

Cat Production Measurement

Cat Production Measurement brings payload weighing to the cab, enabling operators to weigh loads “on the go.” Loads are weighed as the boom swings with no interruptions in the loading cycle, improving loading speed and efficiency. Operators can view load weights on the integrated display and know precisely how much material is in the bucket and when trucks are filled to target payload. Instant feedback gives operators the confidence to work more effectively, maximizing the potential of the entire fleet. Site managers can wirelessly access data via the VisionLink® web portal to measure production and monitor efficiency.

GRADE Technologies

Grade technologies combine digital design data and in-cab guidance to help you reach target grade quickly and accurately, with minimal staking and checking. That means you'll be more productive, complete jobs faster, in fewer passes, using less fuel, at a lower cost.



Cat Grade with Assist

Cat Grade with Assist ensures you can dig a level base with the right slope each and every time; now it works with tilt buckets to give you even greater versatility. With a touch of a button, the simple-to-use system automates boom and bucket movements typically done by the operator. Regardless of your experience or skill, you will be able to reach target grade up to 45% faster than with traditional grading techniques.

Cat Grade 3D

Cat Grade 3D is perfect for complex excavating projects that require precise cuts and contours. The 254 mm color monitor shows you exactly where to work and how much to cut or fill without staking or grade checking, delivering accuracy within 30 mm. Factory integration of most key components reduces field installation time and labor cost, making the system less costly for you compared to other options. Plus reliability is enhanced because built-in components are protected from damage, ensuring longer service life and more accurate results.

LINK Technologies

LINK technologies, like Product Link, are deeply integrated into your machine and wirelessly communicates key information, including location, hours, fuel usage, idle time and event codes.

Product Link/VisionLink

Easy access to Product Link data via the online VisionLink user interface can help you see how your machine or fleet is performing. You can use this information to make timely, fact based decisions that can boost job site efficiency and productivity, and lower costs.



Safe Work Environment

Features to help protect you day in and day out.

Secure Contact Points

Multiple large steps as well as hand and guard rails will get you into the cab as well as a leg up to the compartments.

Extended hand and guard rails allow you to safely climb to the upper deck. Anti-skid plates on the surface of the upper structure, and the top of the storage box area, reduce your slipping hazards in all types of weather conditions. They can be removed for cleaning.

Great Views

The rearview camera greatly enhances visibility behind the machine to help the operator work more productively. A panoramic rearview is automatically displayed on the new multi-function monitor during reverse travel. As an option, a second display can be added, providing a dedicated full-time rearview of the job site.

Smart Lighting

Halogen lights provide plenty of illumination. Cab and boom lights can be programmed to stay on for up to 90 seconds after the engine has been turned off to help you safely exit the machine.

A Safe and Quiet Cab

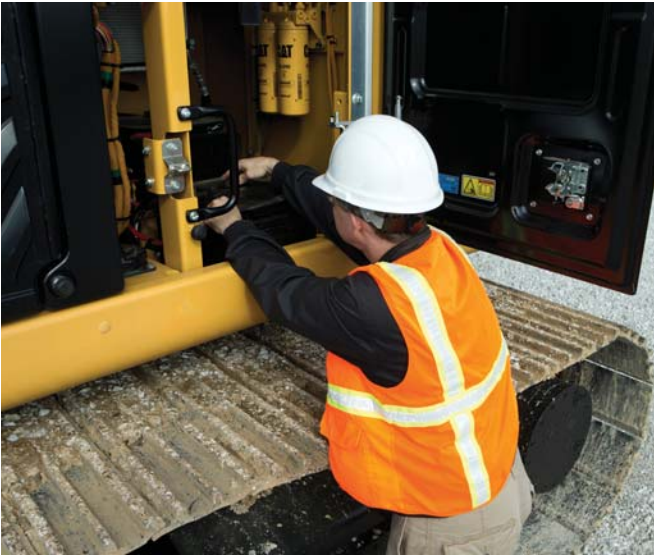
The ROPS-certified cab provides you with a safe working environment. It also contributes to your comfort because it's attached to a reinforced frame with special viscous mounts that limit vibration and unnecessary sound.

Optional Falling Object Guards (FOGS) further protect you from debris coming to the cab.



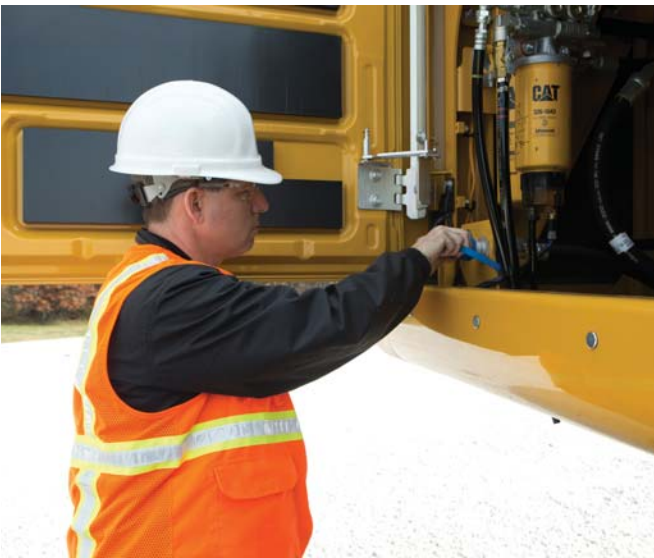
Serviceable

Designed to make your maintenance quick and easy.



Ground-Level Access

You can reach most routine maintenance items like fuel and oil filters, fluid taps, and grease points from the safety and convenience of ground level. Not only do compartments feature wide service doors designed to help prevent debris entry, but they also securely latch in place to help make your service work simpler.



Quick and Convenient Fluids Service

S-O-SSM Oil sample and pressure ports provide easy checking of machine condition and are standard on every machine.

The fuel tank's drain cock makes it easy and simple for you to remove water and sediment during routine maintenance. Plus an integrated fuel level indicator pops up to help you reduce the possibility of fuel tank overfilling. An optional fast fill port accessible from ground level can make refueling even easier and faster.

A Smart Cooling Design

The high-ambient cooling system features a fuel-saving variable-speed fan and a side-by-side-mounted radiator and oil and air coolers for easy cleaning.

A Fresh Idea

When you select ventilation inside the cab, outside air enters through the fresh air filter. The filter is conveniently located on the side of the cab to make it easy to reach and replace, and it is protected by a lockable door that can be opened with the engine key.



HYBRID

Sustainable Generations ahead in every way.

- The 336F/F L XE is designed to compliment your business plan, reduce emissions and minimize the consumption of natural resources.
- The 336F/F L XE moves as much material as a standard 336F yet burns up to 13% less fuel. This means more efficiency and productivity for you with less resource consumption
- The C9.3 ACERT engine meets Japan 2014 (Tier 4 Final) emission standards.
- The machine has the flexibility of running on either ultra-low-sulfur diesel (ULSD) fuel with 10 ppm of sulfur.
- An overfill indicator rises when the tank is full to help the operator avoid spilling.
- Quick fill ports with connectors ensure fast, easy, and secure changing of hydraulic oil.
- Major components are rebuildable, eliminating waste and saving money by giving the machine and/or major components a second life – and even a third life.
- Link technologies enable you to collect and analyze equipment and job site data so you can maximize productivity and reduce costs.
- The 336F XE is an efficient, productive machine that's designed to conserve our natural resources for generations ahead.

Complete Customer Care

Unmatched support makes the difference.

Worldwide Parts Availability

Cat dealers utilize a worldwide parts network to maximize your machines' uptime. Plus they can help you save money with Cat remanufactured components.

Financial Options Just for You

Consider financing options and day-to-day operating costs. Look at dealer services that can be included in the machine's cost to yield lower owning and operating costs over time.

What's Best for You Today...and Tomorrow

Repair, rebuild, or replace? Your Cat dealer can help you evaluate the cost involved so you can make the best choice for your business.



336F/F L XE Hydraulic Excavator Specifications

Engine

Engine Model	Cat C9.3 ACERT
Gross Power – SAE J1995	238 kW (319 hp)
Net Power – SAE J1349	228 kW (306 hp)
Bore	115 mm
Stroke	149 mm
Displacement	9.3 L

Weights

Minimum Weight	34 700 kg
Maximum Weight	36 700 kg

Drive

Gradeability	30°/70%
Maximum Travel Speed	4.8 km/h
Maximum Drawbar Pull	294 kN

Swing Mechanism

Swing Speed	8.7 rpm
Swing Torque	109 kN·m
Maximum Swing Torque	134 kN·m

Service Refill Capacities

Fuel Tank Capacity	620 L
Cooling System	43 L
Engine Oil (with filter)	32 L
Swing Drive (each)	19 L
Final Drive (each)	8 L
Hydraulic System Oil (including tank)	380 L
Hydraulic Tank Oil	175 L
DEF Tank (ISO 22241)	41 L

Hydraulic System

Main System – Maximum Flow (Total)	570 L/min
Maximum Pressure	
Equipment	35 000 kPa
Travel	35 000 kPa
Swing	31 500 kPa
Pilot System	
Maximum Flow	28 L/min
Maximum Pressure	4100 kPa
Boom Cylinder	
Bore	150 mm
Stroke	1440 mm
Stick Cylinder	
Bore	170 mm
Stroke	1738 mm
DB Bucket Cylinder	
Bore	150 mm
Stroke	1151 mm
TB Bucket Cylinder	
Bore	160 mm
Stroke	1356 mm

Track

Number of Shoes (each side)	
Standard Undercarriage	45
Long Undercarriage	49
Number of Track Rollers (each side)	
Standard Undercarriage	7
Long Undercarriage	9
Number of Carrier Rollers (each side)	2

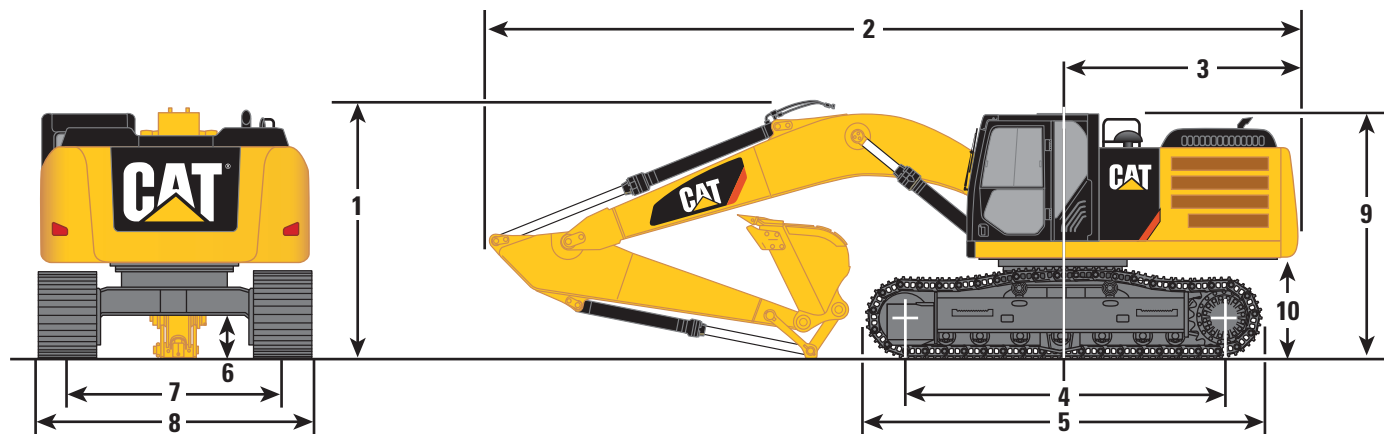
Standards

Cab/ROPS	ISO 12117-2: 2008
----------	-------------------

336F/F L XE Hydraulic Excavator Specifications

Dimensions

All dimensions are approximate.



Boom Options	HD Reach Boom 6.5 m		Mass Boom 6.18 m
Stick Options	R3.2 DB	R2.8 DB	M2.55 TB
Bucket Options	1.5 m ³	1.5 m ³	1.6 m ³
1 Shipping Height*	3470 mm	3630 mm	3610 mm
2 Shipping Length	11 140 mm	11 180 mm	10 840 mm
3 Tail Swing Radius	3490 mm	3490 mm	3490 mm
4 Length to Center of Rollers			
Standard Undercarriage	3605 mm	3605 mm	3605 mm
Long Undercarriage	4040 mm	4040 mm	4040 mm
5 Track Length			
Standard Undercarriage	4590 mm	4590 mm	4590 mm
Long Undercarriage	5030 mm	5030 mm	5030 mm
6 Ground Clearance*	510 mm	510 mm	510 mm
Ground Clearance**	480 mm	480 mm	480 mm
7 Track Gauge			
Standard Undercarriage	2590 mm	2590 mm	2590 mm
Long Undercarriage	2590 mm	2590 mm	2590 mm
8 Transport Width			
600 mm Shoes	3190 mm	3190 mm	3190 mm
700 mm Shoes	3290 mm	3290 mm	3290 mm
800 mm Shoes	3390 mm	3390 mm	3390 mm
9 Cab Height	3160 mm	3160 mm	3160 mm
Cab Height with Top Guard	3360 mm	3360 mm	3360 mm
10 Counterweight Clearance**	1220 mm	1220 mm	1220 mm

Dimensions may vary depending on bucket selection.

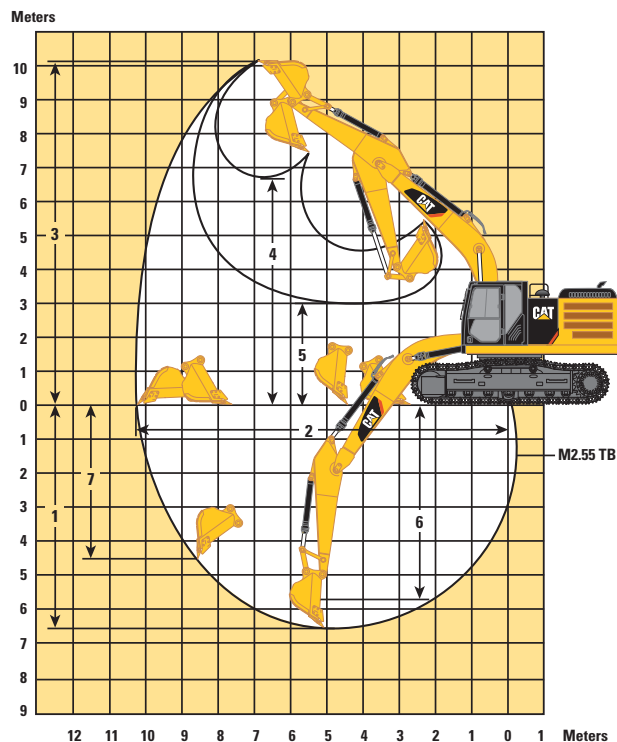
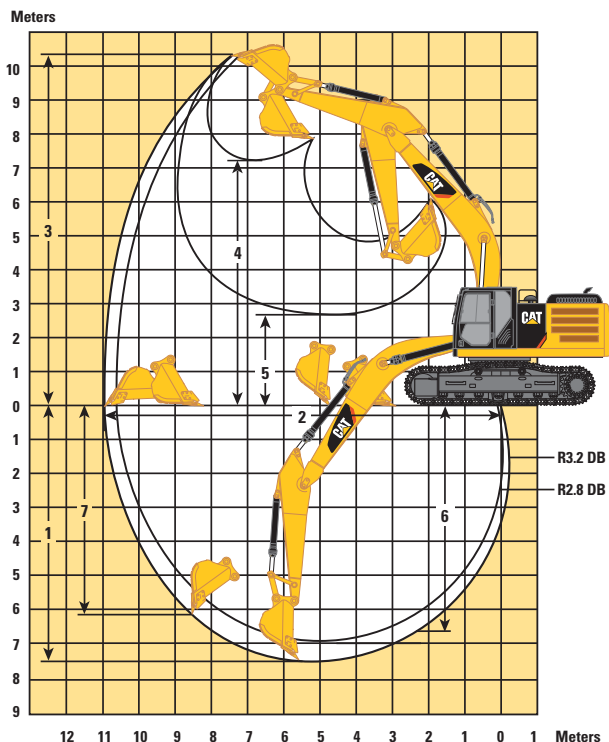
*Including shoe lug height

**Without shoe lug height

336F/F L XE Hydraulic Excavator Specifications

Working Ranges

All dimensions are approximate.



Boom Options

HD Reach Boom 6.5 m

Mass Boom 6.18 m

Stick Options

R3.2 DB

R2.8 DB

M2.55 TB

Bucket Options

1.5 m³

1.5 m³

1.6 m³

1 Maximum Digging Depth	7390 mm	6990 mm	6570 mm
2 Maximum Reach at Ground Level	10 920 mm	10 620 mm	10 180 mm
Maximum Radius of Working Equipment	11 110 mm	10 810 mm	10 390 mm
3 Maximum Cutting Height	10 280 mm	10 330 mm	10 080 mm
4 Maximum Loading Height	7210 mm	7200 mm	6690 mm
5 Minimum Loading Height	2710 mm	3110 mm	3000 mm
6 Maximum Depth Cut for 2440 mm Level Bottom	6700 mm	6280 mm	5750 mm
7 Maximum Vertical Wall Digging Depth	6070 mm	6010 mm	5340 mm

Dimensions may vary depending on bucket selection.

336F/F L XE Hydraulic Excavator Specifications

Operating Weights and Ground Pressures

Boom	Stick	800 mm TG		700 mm TG		600 mm TG		600 mm DG	
		Weight	Ground Pressure	Weight	Ground Pressure	Weight	Ground Pressure	Weight	Ground Pressure
		kg	kPa	kg	kPa	kg	kPa	kg	kPa
Counterweight – 5.1 mt									
Standard Undercarriage									
HD Reach Boom 6.5 m	HD R3.2DB	35 700	49.9	35 000	55.9	34 700	64.6	35 500	66.1
HD Reach Boom 6.5 m	HD R2.8DB	35 700	49.9	35 100	56.0	34 800	64.8	35 500	66.1
Mass Boom 6.18 m	M2.55TB	36 400	50.9	35 700	57.0	35 400	65.9	36 200	67.4
Long Undercarriage									
HD Reach Boom 6.5 m	HD R3.2DB	36 700	51.3	36 000	57.5	35 700	66.5	36 500	68.0
HD Reach Boom 6.5 m	HD R2.8DB	36 700	51.3	36 000	57.5	35 700	66.5	36 500	68.0
Mass Boom 6.18 m	M2.55TB	37 400	52.2	36 700	58.6	36 400	67.8	37 200	69.3

Bucket and Stick Forces

Boom Options	Reach Boom 6.5 m		Mass Boom 6.18 m
Stick Options	R3.2 DB	R2.8 DB	M2.55 TB
Bucket Options			
Standard Undercarriage	1.4 m ³ (426-1200)	1.5 m ³ (426-1201)	1.6 m ³ (229-7875)
Long Undercarriage	1.5 m ³ (426-1201)	1.5 m ³ (426-1201)	1.6 m ³ (229-7875)
Bucket Digging Force (ISO)	222.3 kN	222.3 kN	262.2 kN
Stick Digging Force (ISO)	168.8 kN	188.1 kN	191.3 kN

336F/F L XE Hydraulic Excavator Specifications

Major Component Weights

	kg
Lower Structure (without counterweight and track)	
Standard Undercarriage	8100
Long Undercarriage	8700
Upper Structure (without front linkage, without counterweight)*	10 600
Counterweight	5100
Boom (includes lines, pins and stick cylinder)	
HD Reach Boom – 6.50 m	4100
Mass Boom – 6.18 m	4200
Stick (includes lines, pins and bucket cylinder)	
HD R3.2 DB	1800
HD R2.8 DB	1800
M2.55 TB	2100
Track Shoes (per two tracks)	
Standard Undercarriage:	
800 mm Triple Grouser	4700
700 mm Triple Grouser	4000
600 mm Triple Grouser	3700
600 mm Double Grouser	4500
Long Undercarriage:	
800 mm Triple Grouser	5100
700 mm Triple Grouser	4300
600 mm Double Grouser	4900

*Base machine includes 75 kg operator weight and 90% fuel weight, and undercarriage with center guard.

Standard Equipment

Standard equipment may vary. Consult your Cat dealer for details.

CAB

- Wiper, and washer
- Mirrors
- Pressurized cab
- Laminated glass front upper window and tempered other windows
- Sliding upper door window (left-hand cab door)
- Openable skylight
- Interior:
 - Glass-breaking safety hammer
 - Coat hook
 - Beverage holder
 - Ashtray
 - Literature holder
 - Interior lighting
 - AM/FM radio
 - Two 12V stereo speakers
 - Storage shelf suitable for lunch or toolbox
 - Power supply with 12V, two power outlets (10 amp)
 - Thumb wheel modulation joystick
 - Air conditioner, heater and defroster with climate control
- Seat:
 - Adjustable high-back, heated and ventilated seat with air suspension
 - Seat belt, 51 mm
 - Adjustable armrest
 - Height adjustable joystick consoles
 - Hydraulic lock lever
 - Travel control pedals with removable hand levers
 - Capability of installing two additional pedals
 - Two speed travel
 - Floor mat, washable

Monitor:

- Clock
- Video ready
- Color LCD display with warning, filter/fluid change, and working hour information
- Language display (full graphic and full color display)
- Machine condition, error code and tool mode setting information
- Start-up level check for engine oil, engine coolant and hydraulic oil
- Warning, filter/fluid change and working hour information
- Fuel consumption meter

ELECTRICAL

- 80 amp alternator
- Circuit breaker
- Battery, standard

ENGINE

- Cat C9.3 ACERT diesel engine
- Meets Japan 2014 (Tier 4 Final) emission standards
- 2300 m altitude capability with no derate
- Automatic engine speed control
- Electric priming pump
- Water separator in fuel line including water level sensor and indicator
- Economy and standard power modes
- Air cleaner
- Radial seal air filter
- Side-by-side cooling system
- Primary filter with water separator and water separator indicator switch
- Starting kit, cold weather, –18° C
- Fuel differential indicator switch in fuel line
- 2×4 micron main filters and 1×10 micron primary filter in fuel line
- Water level indicator for water separator
- 43/48° C ambient cooling capability

HYDRAULIC SYSTEM

- Automatic swing parking brake
- High-performance hydraulic return filter
- Regeneration circuit for boom and stick
- Capability of installing additional auxiliary circuits

LIGHTS

- Cab and boom lights with time delay
- Exterior lights integrated into storage box

UNDERCARRIAGE/UPPERFRAME

- Grease Lubricated Track GLT2, resin seal
- Heavy duty track roller and idler
- Heavy Duty bottom guard
- Heavy Duty track motor guard
- Towing eye on base frame
- Counterweight, 5100 kg
- Standard or Long undercarriage

SAFETY AND SECURITY

- Cat one key security system
- Door locks
- Cap locks on fuel and hydraulic tanks
- Lockable external tool/storage box
- Signaling/warning horn
- Secondary engine shutoff switch
- Mirrors
- Rear vision camera
- Capability to connect a beacon
- Machine Security System (MSS)

INTEGRATED TECHNOLOGIES

- Product Link
- Rear vision camera
- Cat Grade with Assist (field installed kit)
- Cat Production Measurement

Optional Equipment

Optional equipment may vary. Consult your Cat dealer for details.

FRONT LINKAGE

- Heavy Duty Reach Boom 6.5 m
 - HD R3.2 DB
 - HD R2.8 DB
 - DB-family bucket linkage (without lifting eye)
- Mass boom 6.18 m
 - M2.55 TB
 - TB-family bucket linkage (without lifting eye)
- Bucket linkage for Demolition

TRACK

- 800 mm Triple Grouser
- 700 mm Triple Grouser
- 600 mm Double Grouser
- 600 mm Triple Grouser (336F XE only)

GUARDS

- Swivel guard
- Mesh guard
- Track guiding guards
 - Full length
 - Center

CAB

- Windshield:
 - 70/30 front windshield with removable lower windshield with in cab storage bracket
 - 1-piece front windshield
- Sunscreen
- Rain protector

HYDRAULIC SYSTEM

- HP hydraulic lines for boom and stick
- MP hydraulic lines for boom and stick
- Grease gun with holder
- Tool kit

ELECTRICAL

- Travel alarm
- Beacon

TECHNOLOGY

- Cat Grade 3D

For more complete information on Cat products, dealer services, and industry solutions, visit us on the web at www.cat.com

© 2017 Caterpillar
All rights reserved

Materials and specifications are subject to change without notice. Featured machines in photos may include additional equipment. See your Cat dealer for available options.

CAT, CATERPILLAR, SAFETY.CAT.COM, their respective logos, "Caterpillar Yellow" and the "Power Edge" trade dress, as well as corporate and product identity used herein, are trademarks of Caterpillar and may not be used without permission.

VisionLink is a trademark of Trimble Navigation Limited, registered in the United States and in other countries.

Based on the Labor, Safety and Health Laws in Japan, employer of small construction equipment are required to provide specific training for all operators on machines with ship weight less than 3 metric ton. For machines greater than 3 metric ton, operator needs to obtain operator license certification from a Government approved registered training school.

AEHQ7911-01
Replaces AEHQ7911
(Japan)

