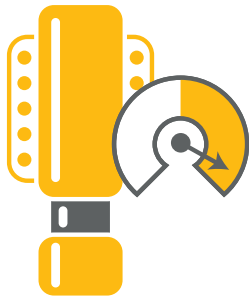


8 MAINTENANCE TIPS FOR BETTER TRUCK RELIABILITY

A smart maintenance plan will help your Cat® mining trucks deliver reliable service, day in and day out.

Here are eight things your maintenance people can do to keep your truck fleet up and running, even under the harshest mine site conditions.



1 MAINTAIN PROPER STRUT CHARGE

Struts operating in poor charge condition will not properly transfer load into the frame. Include an annual recharge in your maintenance schedule.

2 INSPECT AND MAINTAIN BODY SHIMMING

It is important that all body pads make contact to transfer the load to the frame properly. Close gaps wherever you find them.

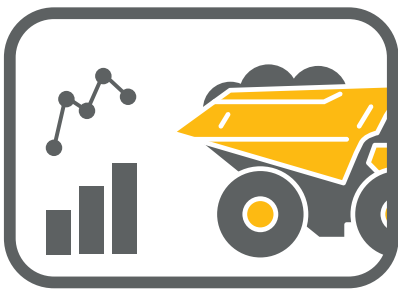
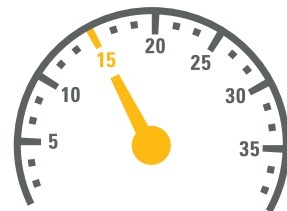


3 MONITOR FRAME CONDITION

Inspect, maintain and repair all frame and structural components on a regular schedule. Follow OMM guidelines to minimize downtime.*

4 CONFIGURE SPEED LIMITS

Set proper loaded, retarding and overloaded speed limits. Excessive speed causes premature strut, frame and tire wear.

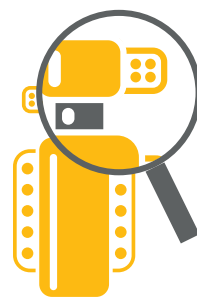


5 USE A PAYLOAD MONITORING SYSTEM

Implement a monitoring technology, then configure correct target payloads and overload settings, per 10/10/20 policy. Check that your monitors are set for the correct units.

6 MAINTAIN UPPER FRONT STRUT BEARINGS

Failure to maintain these bearings transfers significant load to the front strut mount casting. Inspect them regularly for damage and replace when needed.



7 FOLLOW PROPER TOWING PROCEDURES

Towing and retrieval practices must be followed. Improper towing can result in major structural damage and component failures.

8 INSPECT AND REPORT DAMAGE

Perform a daily inspection. Look for machine damage such as body impacts, tire sidewall damage, tank groundings, and bumper groundings.



*Refer to the Cat Operations & Maintenance Manual (OMM) supplied with your truck for recommended operation and maintenance practices.

BUILD YOUR KNOWLEDGE

Looking for more ways to improve the maintenance of your truck fleet?
[Contact your Cat dealer](#) for service and maintenance recommendations