



COMBINED HEAT AND POWER PLANT ELECTRIC UTILITY EIGHT FLAGS ENERGY

OWNER OF CHP PLANT

Chesapeake Utilities Corporation

OWNER OF PULP AND PAPER MILL

Rayonier Advanced Materials

PRODUCT

Titan™ 250 Gas Turbine Generator Set

CUSTOMER VALUE

**Reduced Energy Costs, Reduced Emissions,
Reliable Power Supply**

Eight Flags Energy's combined heat and power (CHP) plant began generating electricity and steam in July of 2016. The location of the plant on Amelia Island is on the end of a lateral line so the plant provides excellent power quality and reliability. The project is a result of the partnership between Chesapeake Utilities Corporation, its subsidiary, Florida Public Utilities Company (FPU), and Rayonier Advanced Materials, Inc. The Eight Flags CHP plant is fueled by natural gas and built on the site adjacent to Rayonier Performance Fibers cellulose specialties production facility, a pulp and paper mill. Rayonier utilizes a large amount of steam in its manufacturing process and will purchase low-cost steam from the CHP facility. The thermal output is up to 200,000 lb/hr unfired steam. Capturing the thermal energy improves the plants' overall efficiency, generates savings and provides environmental benefits.

Solar® Turbines
A Caterpillar Company

Combined Heat and Power Plant - Electric Utility



PLANT DATA

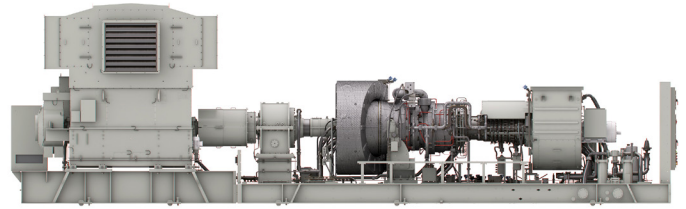
Fuel: Natural Gas

Titan 250 Industrial Gas Turbine with SoLoNOx Combustion

Heat Recovery Steam Generator

Duct Burner

800 Ton Inlet Air Chiller



OUR PRODUCTS AND SERVICES

Gas Turbine Package and Auxiliaries

Training

Warranty

Operations and Maintenance Services

LOWER ELECTRICITY RATE

REDUCED RISK OF GRID DISRUPTION

JOB INFUSION FOR LOCAL ECONOMY

ENVIRONMENTALLY FRIENDLY POWER

ECONOMIC GROWTH

At the heart of the CHP plant is Solar's most powerful and efficient Titan 250 industrial gas turbine generator set. The Titan generates 20 MW of base load power, enough to meet 50% of Amelia Island's demand. The Titan 250 generator set is coupled with a heat recovery steam generator. Construction on the plant took 115,000 hours and employed nearly 100 workers. The single combustion turbine is capable of supporting essential services on Amelia Island in case of a severe storm. The plant is designed to handle a category 4 storm surge, with the gas turbine, switchgear and auxiliary equipment elevated ten feet above grade.

The unique partnership between the public and private sector provides benefits for all of the parties. FPU customers will enjoy dependable and environmentally friendly electric service in their homes and businesses and will realize significant cost savings. The steam generated by the CHP plant gives Rayonier greater operational flexibility for their production facility, optimizing operations. In addition, Chesapeake's shareholders benefit with an increased long-term earnings capacity.

Solar Turbines Incorporated

Tel: +1 619-544-5352

Mail: infocorp@solarturbines.com, Web: www.solarturbines.com

Caterpillar is a registered trademark of Caterpillar Inc. Solar, Titan and SoLoNOx are trademarks of Solar Turbines Incorporated.

©2016 Solar Turbines Incorporated. Specifications subject to change without notice. All

rights reserved.

CSCHP-EFE/1116/EO

Solar[®] Turbines

A Caterpillar Company