

# 336F/F L

## Hydraulic Excavator

2017



\*写真は海外仕様機でオプション品を含みます。

### Engine

Engine Model	Cat® C9.3 ACERT	
Net Power – SAE J1349	228 kW	306 hp

### Drive

Maximum Travel Speed	4.8 km/h
Maximum Drawbar Pull	294 kN

### Weight

Operating Weight	36 500 kg
------------------	-----------



オフロード法2014年  
基準適合



**The 336F/F L is built to keep your production numbers up and your owning and operating costs down.**

*Not only does the machine's C9.3 ACERT engine meet Japan 2014 (Tier 4 Final) emission standards, it does so while giving you all the power, fuel efficiency, and reliability you need to succeed.*

*Where the real power comes in is through the hydraulic system. You can literally move tons of material all day long with a great deal of speed and precision.*

*When you add in a quiet operator environment that keeps you comfortable and productive, service points that make your routine maintenance quick and easy, and multiple Cat work tools that help you do a number of jobs very well, you simply won't find a better machine in this size class.*

**Contents**

Reliable and Productive .....	4
Fuel Efficient .....	6
Easy to Operate .....	8
Durable Structures .....	10
Durable Linkages .....	11
Versatile .....	12
Cat Connect Technologies.....	14
Safe Work Environment .....	16
Serviceable .....	17
Sustainable .....	18
Complete Customer Care.....	18
Specifications.....	19
Standard Equipment.....	24
Optional Equipment.....	25
Notes.....	26









# Reliable and Productive

Power to move your material with speed and precision







### **Hydraulic Horsepower, a Cat Advantage**

When it comes to moving heavy material quickly and efficiently, you need hydraulic horsepower – the type of ground-breaking power the 336F can deliver. Major hydraulic components like pumps and valves are located close together so shorter tubes and lines can be used. This design leads to less friction loss, reduced pressure drops, and more power to the ground for the work you need to get done.

### **Control Like No Other**

Controllability is one of the main attributes of Cat excavators, and one of the key contributors to this is the main control valve. The valve opens slowly when your range of joystick lever movement is small and opens rapidly when movement is high. It puts flow where you need it when you need it, which leads to smoother operation, greater efficiency, and lower fuel consumption.

### **Auxiliary Hydraulics for Added Versatility**

Auxiliary hydraulics give you greater tool versatility so you can take on more work with just one machine, and there are several options from which you can choose.





## Fuel Efficient

Engineered to lower your operating costs





The Cat C9.3 ACERT engine meets Japan 2014 (Tier 4 final) emission standards and it does so without interrupting your job process. Simply turn the engine on and go to work. It will look for opportunities in your work cycle to regenerate itself, and it will give you plenty of power for the task at hand – all to help keep your owning and operating costs to an absolute minimum.

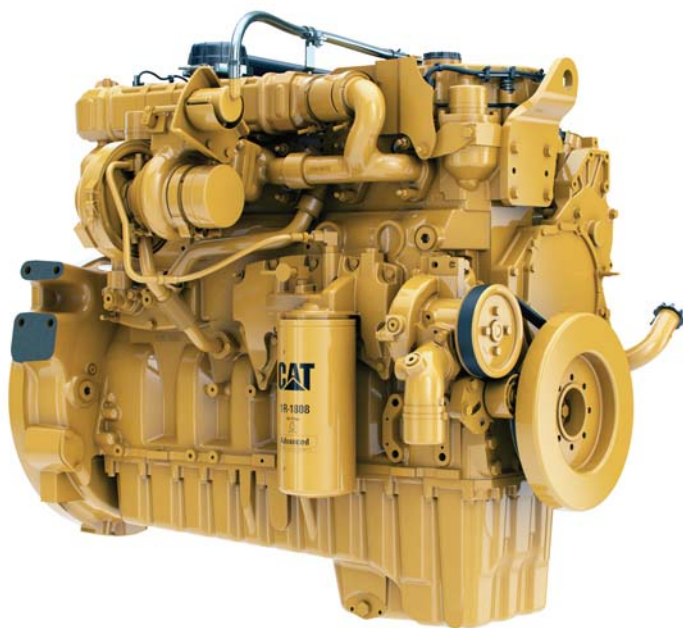
### A Smart Design for Any Temperature

The 336F/F L features a side-by-side cooling system that allows you to put the machine to work in extremely hot and cold conditions. The system is completely separated from the engine compartment to reduce noise and heat. Plus it features easy-to-clean cores and a new variable-speed fan that reverses to blow out unwanted debris that may accumulate during your work day.

### Proven Technology

The right technologies fine-tuned for the right applications result in:

- **Improved Fuel Efficiency** – Up to 5% improvement over Japan 2011 (Tier 4 Interim) products.
- **High Performance** across a variety of applications.
- **Enhanced Reliability** through commonality and simplicity of design.
- **Maximized Uptime and Reduced Cost** with world-class support Cat dealer support.
- **Minimized Impact of Emission Systems** – with no operator interaction required.
- **Durability** with long service life.
- **Better Fuel Economy** with minimized maintenance costs.
- **Same Great Power and Response.**



# Easy to Operate

Comfort and convenience to keep you productive all day long





## Safe and Quiet Cab

The cab contributes to your comfort thanks to special viscous mounts and special roof lining and sealing, that limit vibration and unnecessary sound. Operators will enjoy the quietness and comfort of the all-new cab.

## Excellent Ergonomics

Wide seats with air suspension and heat/cooling options, include a reclining back, upper and lower slide adjustments, and height and tilt angle adjustments to meet your needs for maximum comfort.

The fully automatic climate control system keeps operators comfortable and productive all day long in either hot or cold weather.

Storage spaces are located in the front, rear, and side consoles of the cab. A drink holder accommodates a large mug, and a shelf behind the seat stores large lunch or toolboxes.

Power supply sockets are available for charging your electronic devices like an MP3 player, a cell phone, or even a tablet.

## Controls Just for You

The right and left joystick consoles can be adjusted to improve your comfort and productivity during the course of a day. The right joystick features a button that will reduce engine speed when you are not working to help save fuel. Touch it once and speed reduces; touch it again and speed increases for normal operation.



## Easy to Navigate Monitor

The new LCD monitor is easy to see and navigate. Not only can it memorize up to 10 different work tools, it's also programmable in up to 44 languages to meet today's diverse workforce. The monitor clearly displays critical information you need to operate efficiently and effectively. Plus it projects the image from the rearview camera to help you see what's going on around you so you can stay safely focused on the job at hand.



# Durable Structures

Made to work in your tough, heavy-duty applications



## Stable Undercarriage

The undercarriage contributes significantly to outstanding stability and durability.

Track shoes, links, rollers, idlers, and final drives are all built with high-tensile strength steel for long-term durability.

Cat Grease Lubricated Track 2 (GLT2) track link protects moving parts by keeping water, debris, and dust out and grease sealed in, which delivers longer wear life and reduced noise when traveling.

Optional guide guards help maintain track alignment to improve the machine's overall performance – whether you're traveling on a flat, heavy bed of rock or a steep, wet field of mud.

## Robust Frames

The 336F/F L is a robust, well-built machine designed to give you a very long service life. The upper frame has mountings made specifically to support the heavy-duty cab. It's also reinforced around areas that take on a lot of stress like the boom foot, skirt, and counterweight.

## Great Weight

The counterweight is built with thick steel plates and reinforced fabrications to make it less susceptible to damage, designed with curved surfaces that match the machine's sleek, smooth appearance along with integrated housings to help protect the rearview camera.





## Durable Linkages

Options to take on your far-reaching  
or up-close tasks

### Booms and Sticks for Any Job

The 336F is offered with a range of booms and sticks. Each is built with internal baffle plates and is stress relieved for added durability, and each undergoes ultrasound inspection to ensure quality and reliability. Large box-section structures with thick, multi-plate fabrications, castings, and forgings are used in high-stress areas such as the boom nose, boom foot, boom cylinder, and stick foot to improve durability. Also, the boom nose pin retention method is a captured flag design for enhanced durability.

The Reach boom and sticks offer you excellent all-around versatility for general excavations work like multipurpose digging and loading.

The Mass boom and sticks offer your enhanced performance in heavy-duty material like rock. They provide higher digging forces due to special boom and stick geometry, and bucket linkage and cylinders are built for greater durability.

### Pins

All front linkage pins have thick chrome plating, giving them high wear resistance. Each pin diameter is made to distribute the shear and bending loads associated with the stick and to help ensure long pin, boom and stick life.

Talk to your Cat dealer to pick the best front linkage for your applications.



# Versatile

Do more jobs with one machine







## Get the Most from One Machine

The Cat combination of machine and tool provides a total solution for just about any application.

## Change Jobs Quickly

Available tool control remembers pressures and flows for up to 10 tools. Simply toggle through the monitor, select the tool, and go to work for maximum efficiency.

## Dig, Rip and Load

A wide range of buckets dig everything from basic top soil to extreme, harsh material like ore and high quartzite granite. Rip through rock as an alternative to blasting in quarries. High-capacity buckets load trucks in a minimum number of passes for maximum productivity.

## Break, Demolish and Scrap

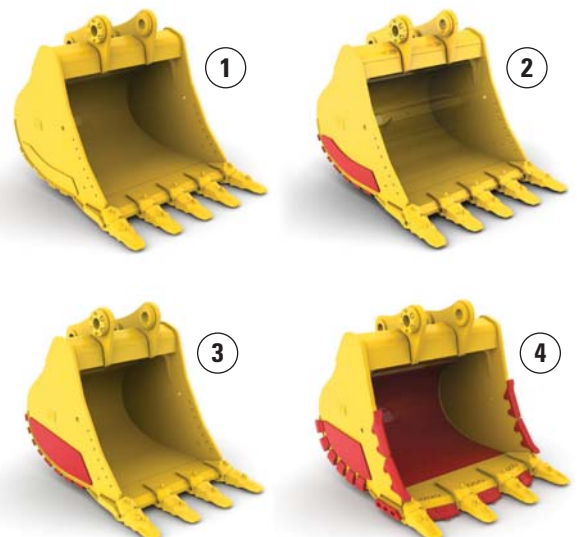
A hydraulic hammer ably equips your machine for breaking rock in quarries. It will also make taking down bridge pillars and heavily reinforced concrete on road demolition jobs no problem.

Multi-processor and pulverizer attachments make your machine ideal for demolition jobs and processing the resulting debris.

Shears with 360° rotation mount to the machine for processing scrap steel and metal.

## Set Up Your Machine for Profitability

Your Cat dealer can install hydraulic kits to properly operate all Cat Work Tool attachments, maximizing the machine's uptime and your profit. All Cat Work Tool attachments are supported by the same Cat dealer network as your Cat machine.



1) General Duty (GD) 2) Heavy Duty (HD)  
3) Severe Duty (SD) 4) Extreme Duty (XD)



# Cat Connect Technologies

Monitor, manage, and enhance job site operations



Cat Connect makes smart use of technology and services to improve your job site efficiency. Using the data from technology-equipped machines, you'll get more information and insight into your equipment and operations than ever before.

Cat Connect technologies offer improvements in these key areas:



EQUIPMENT  
MANAGEMENT

**Equipment Management** – increase uptime and reduce operating costs.



PRODUCTIVITY

**Productivity** – monitor production and manage job site efficiency.



SAFETY

**Safety** – enhance job site awareness to keep your people and equipment safe.

## LINK Technologies

LINK technologies, like Product Link™, are deeply integrated into your machine and wirelessly communicates key information, including location, hours, fuel usage, idle time and event codes.

## Product Link/VisionLink®

Easy access to Product Link data via the online VisionLink user interface can help you see how your machine or fleet is performing. You can use this information to make timely, fact based decisions that can boost job site efficiency and productivity, and lower costs.



## GRADE Technologies

Grade technologies combine digital design data and in-cab guidance to help you reach target grade quickly and accurately, with minimal staking and checking. That means you'll be more productive, complete jobs faster, in fewer passes, using less fuel, at a lower cost.



### Cat Grade Control Depth and Slope

The integrated Cat Grade Control system delivers 2D bucket tip elevation guidance to the cab to help operators create precise planes and slopes. Real-time bucket tip elevation guidance on the standard cab monitor indicates how much to cut or fill. Fast response sensors deliver immediate feedback, while optional integrated joystick buttons help operators make quick adjustments to maintain grade. Built-in alerts can be set to warn the operator if the linkage or bucket approaches a predefined elevation or depth, such as when working in areas with low ceilings, or digging near water lines. Staking and checking is minimized, which reduces ground crews and enhances job site safety.

Works best in simple 2D applications, such as digging trenches and basements or grading steep embankments.





# Safe Work Environment

Features to help protect you day in and day out



## Secure Contact Points

Multiple large steps as well as hand and guard rails will get you into the cab as well as a leg up to the compartments.

Extended hand and guard rails allow you to safely climb to the upper deck. Anti-skid plates on the surface of the upper structure, and the top of the storage box area, reduce your slipping hazards in all types of weather conditions. They can be removed for cleaning.

## Great Views

The rearview camera greatly enhances visibility behind the machine to help the operator work more productively. A panoramic rearview is automatically displayed on the new multi-function monitor during reverse travel. As an option, a second display can be added, providing a dedicated full-time rearview of the job site.

## Smart Lighting

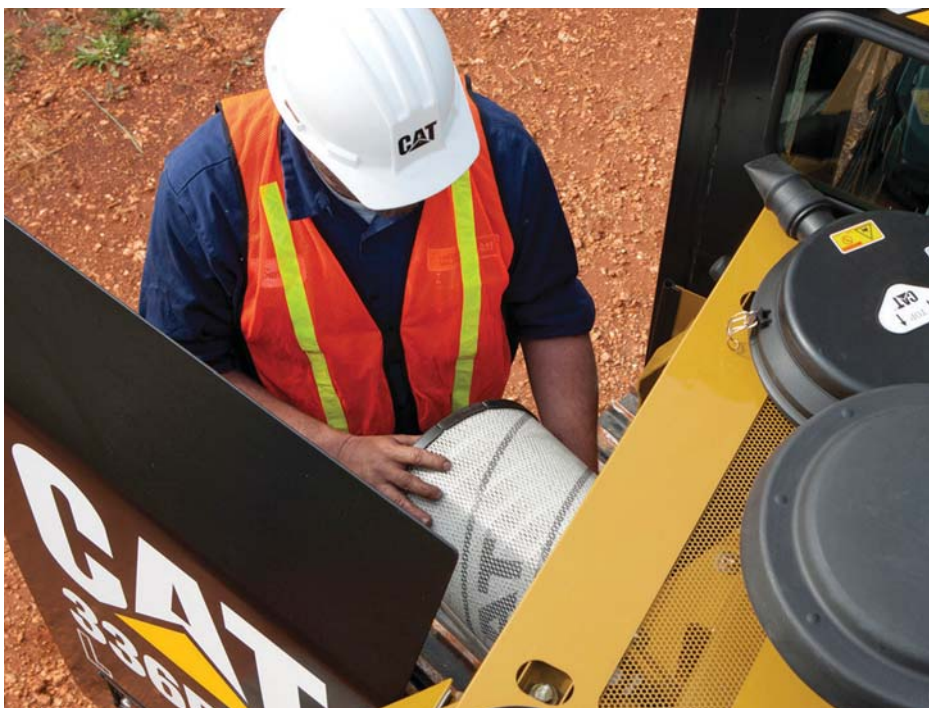
Halogen lights provide plenty of illumination. Cab and boom lights can be programmed to stay on for up to 90 seconds after the engine has been turned off to help you safely exit the machine. Optional High Intensity Discharge (HID) lights are available for enhanced night-time visibility.

## A Safe and Quiet Cab

The ROPS-certified cab provides you with a safe working environment. It also contributes to your comfort because it's attached to a reinforced frame with special viscous mounts that limit vibration and unnecessary sound. Add in special roof lining and sealing and you have a cab that's as quiet inside as any of today's highway trucks.

Optional Falling Object Guards (FOGS) further protect you from debris coming to the cab.





### **Ground-Level Access**

You can reach most routine maintenance items like fuel and oil filters, fluid taps, and grease points from the safety and convenience of ground level. Not only do compartments feature wide service doors designed to help prevent debris entry, but they also securely latch in place to help make your service work simpler.

## **Serviceable**

Designed to make your maintenance quick and easy



### **A Fresh Idea**

When you select ventilation inside the cab, outside air enters through the fresh air filter. The filter is conveniently located on the side of the cab to make it easy to reach and replace, and it is protected by a lockable door that can be opened with the engine key.

### **Quick and Convenient Fluids Service**

S-O-S<sup>SM</sup> Oil sample and pressure ports provide easy checking of machine condition and are standard on every machine.

You can ensure fast, easy, and secure changing of engine and hydraulic oil with the QuickEvac<sup>TM</sup> option.

The fuel tank's drain cock makes it easy and simple for you to remove water and sediment during routine maintenance. Plus an integrated fuel level indicator pops up to help you reduce the possibility of fuel tank overfilling. An optional fast fill port accessible from ground level can make refueling even easier and faster.

An electric refueling pump allows you to refuel from other sources like a barrel or fuel reservoir when a fuel truck or regular fuel pump isn't on site. The pump automatically shuts off when the fuel tank is full.

### **A Smart Cooling Design**

The high-ambient cooling system features a fuel-saving variable-speed fan and a side-by-side-mounted radiator and oil and air coolers for easy cleaning.





## Sustainable Generations ahead in every way

- The 336F/F L is designed to compliment your business plan, reduce emissions and minimize the consumption of natural resources.
- The C9.3 ACERT engine meets Japan 2014 (Tier 4 Final) emission standards.
- The machine has the flexibility of running on either ultra-low-sulfur diesel (ULSD) fuel with 10 ppm of sulfur.
- An overfill indicator rises when the tank is full to help the operator avoid spilling.
- Quick fill ports with connectors ensure fast, easy, and secure changing of hydraulic oil.
- Major components are rebuildable, eliminating waste and saving money by giving the machine and/or major components a second life – and even a third life.
- Link technologies enable you to collect and analyze equipment and job site data so you can maximize productivity and reduce costs.
- The 336F/F L is an efficient, productive machine that's designed to conserve our natural resources for generations ahead.

## Complete Customer Care

Unmatched support makes the difference

### Worldwide Parts Availability

Cat dealers utilize a worldwide parts network to maximize your machines' uptime. Plus they can help you save money with Cat remanufactured components.

### Financial Options Just for You

Consider financing options and day-to-day operating costs. Look at dealer services that can be included in the machine's cost to yield lower owning and operating costs over time.

### What's Best for You Today...and Tomorrow

Repair, rebuild, or replace? Your Cat dealer can help you evaluate the cost involved so you can make the best choice for your business.



# 336F/F L Hydraulic Excavator Specifications

## Engine

Engine Model	Cat C9.3 ACERT	
Net Power – SAE J1349	228 kW	306 hp
Gross Power – SAE J1995	238 kW	319 hp
Bore	115 mm	
Stroke	149 mm	
Displacement	9.3 L	

## Weights

Minimum Weight	34 700 kg*
Maximum Weight	39 000 kg**

\*6 mt counterweight, standard undercarriage, Reach boom, R3.2 m stick, 600 mm TG.

\*\*7 mt counterweight, HD Long undercarriage, Mass boom, M2.55 m stick, 800 mm TG.

## Hydraulic System

Main System – Maximum Flow (Total)	570 L/min
Swing System – Maximum Flow	279 L/min
Maximum Pressure – Equipment	35 000 kPa
Maximum Pressure – Travel	35 000 kPa
Maximum Pressure – Swing	28 000 kPa
Pilot System – Maximum Flow	29 L/min
Pilot System – Maximum Pressure	4100 kPa
Boom Cylinder – Bore	150 mm
Boom Cylinder – Stroke	1440 mm
Stick Cylinder – Bore	170 mm
Stick Cylinder – Stroke	1738 mm
DB Family Bucket Cylinder – Bore	150 mm
DB Family Bucket Cylinder – Stroke	1151 mm
TB Family Bucket Cylinder – Bore	160 mm
TB Family Bucket Cylinder – Stroke	1356 mm

## Drive

Maximum Travel Speed	4.8 km/h
Maximum Drawbar Pull	294 kN

## Swing Mechanism

Swing Speed	8.9 rpm
Swing Torque	109 kN·m
Maximum Swing Torque	134 kN·m

## Service Refill Capacities

Fuel Tank Capacity	620 L
Cooling System	43 L
Engine Oil (with filter)	32 L
Swing Drive (each)	19 L
Final Drive (each)	8 L
Hydraulic System (including tank)	380 L
Hydraulic Tank	175 L
DEF Tank	41 L

## Track

Number of Shoes (each side)	
Standard Undercarriage	45
Long Undercarriage	49
Number of Track Rollers (each side)	
Standard Undercarriage	7
Long Undercarriage	9
Number of Carrier Rollers (each side)	
	2

## Standards

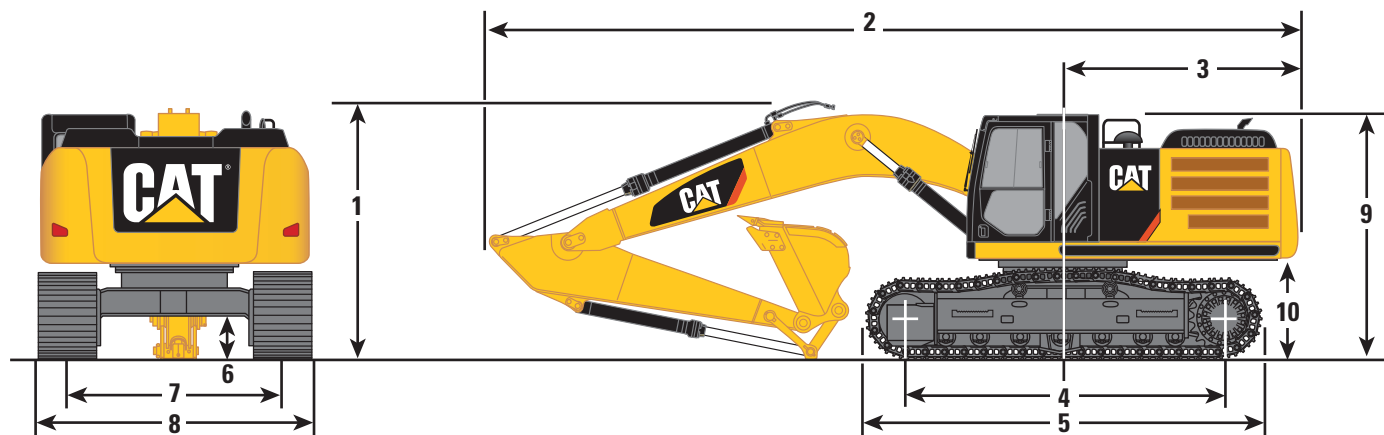
Brakes	ISO 10265 2008
Cab/ROPS	ISO 12117-2 2008



# 336F/F L Hydraulic Excavator Specifications

## Dimensions

All dimensions are approximate.



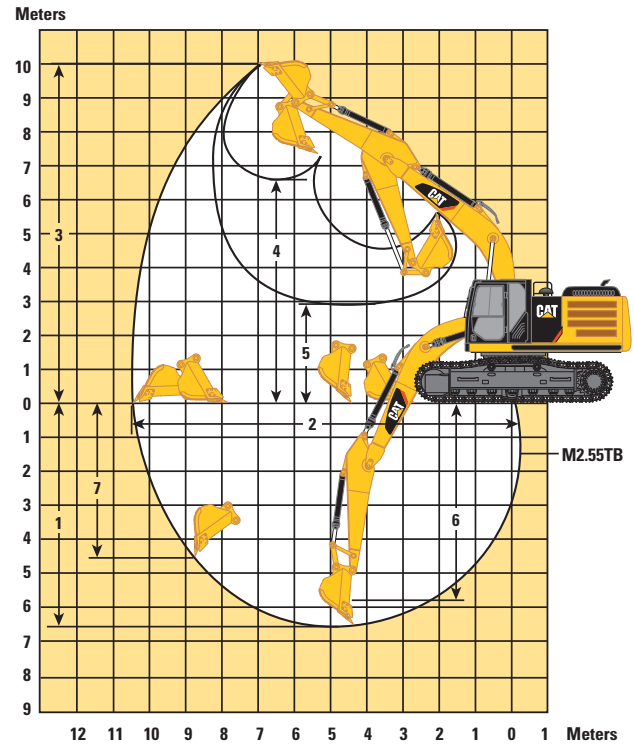
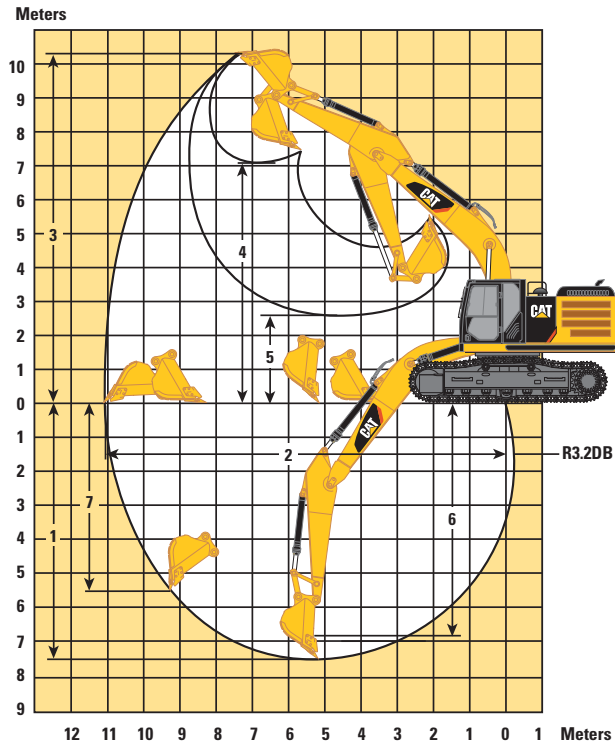
	Extreme Service and Heavy Duty Reach Booms	Mass Boom
Boom	6.50 m	6.18 m
Stick	R3.2DB*	M2.55TB
Bucket	1.5 m <sup>3</sup>	1.6 m <sup>3</sup>
	mm	mm
1 Shipping Height (with Shoe Lug Height)	3470	3610
2 Shipping Length	11 140	10 840
3 Tail Swing Radius	3460	3460
4 Length to Center of Rollers		
Standard Undercarriage	3605	3605
Long Undercarriage	4040	4040
5 Track Length		
Standard Undercarriage	4590	4590
Long Undercarriage	5030	5030
6 Ground Clearance		
With Shoe Lug Height	510	510
Without Shoe Lug Height	480	480
7 Track Gauge		
Standard Undercarriage	2590	2590
Long Undercarriage	2590	2590
8 Transport Width		
600 mm Shoes	3190	3190
700 mm Shoes	3290	3290
800 mm Shoes	3390	3390
9 Cab Height	3160	3160
Cab Height with Top Guard	3360	3360
10 Counterweight Clearance (without Shoe Lug Height)	1220	1220

\*ES and HD.

# 336F/F L Hydraulic Excavator Specifications

## Working Ranges

All dimensions are approximate.



	Extreme Service and Heavy Duty Reach Booms		Mass Boom
	6.50 m		6.18 m
Boom	R3.2DB*		M2.55TB
Stick	1.5 m <sup>3</sup>		1.6 m <sup>3</sup>
Bucket	mm		mm
1 Maximum Digging Depth	7390		6570
2 Maximum Reach at Ground Level	10 920		10 180
3 Maximum Cutting Height	10 280		10 080
4 Maximum Loading Height	7210		6690
5 Minimum Loading Height	2710		3000
6 Maximum Depth Cut for 2440 mm Level Bottom	6700		5750
7 Maximum Vertical Wall Digging Depth	6070		5340

\*ES and HD.



# 336F/F L Hydraulic Excavator Specifications

## Operating Weights and Ground Pressures

	800 mm		700 mm		600 mm		600 mm	
	Triple Grouser Shoes		Triple Grouser Shoes		Triple Grouser Shoes		Double Grouser Shoes	
	kg	kPa	kg	kPa	kg	kPa	kg	kPa
<b>6 mt Counterweight – Standard Undercarriage</b>								
HD Reach Boom – 6.5 m								
HD R3.2DB	35 600	55.2	35 000	62.0	34 700	71.8	35 500	73.4
Mass Boom – 6.18 m								
M2.55TB	36 400	56.4	35 700	63.3	35 400	73.2	36 200	74.9
<b>6 mt Counterweight – Long Undercarriage</b>								
HD Reach Boom – 6.5 m								
HD R3.2DB	36 700	51.3	36 000	57.5	35 700	66.5	36 500	68.0
Mass Boom – 6.18 m								
M2.55TB	37 400	52.2	36 700	58.6	36 400	67.8	37 200	69.3
<b>7 mt Counterweight – HD Standard Undercarriage</b>								
HD Reach Boom – 6.5 m								
HD R3.2DB	37 200	57.7	36 600	64.9	36 300	75.1	37 100	76.7
ES Reach Boom – 6.5 m								
ES R3.2DB	37 700	58.5	37 000	65.6	36 700	75.9	37 500	77.5
Mass Boom – 6.18 m								
M2.55TB	37 900	58.8	37 300	66.1	37 000	76.5	37 800	78.2
<b>7 mt Counterweight – HD Long Undercarriage</b>								
HD Reach Boom – 6.5 m								
HD R3.2DB	38 300	53.5	37 600	60.0	37 300	69.5	38 100	71.0
ES Reach Boom – 6.5 m								
ES R3.2DB	38 800	54.2	38 100	60.8	37 700	70.2	38 600	71.9
Mass Boom – 6.18 m								
M2.55TB	39 000	54.5	38 300	61.2	38 000	70.8	38 900	72.5

## Bucket and Stick Forces

Stick	Extreme Service and Heavy Duty Reach Booms 6.50 m	Mass Boom 6.18 m
	R3.2DB*	M2.55TB
	kN	kN
Bucket Digging Force (ISO)	222.3	262.2
Stick Digging Force (ISO)	168.8	191.3
Bucket Digging Force (SAE)	198.1	233.8
Stick Digging Force (SAE)	163.8	185.1

\*ES and HD.

# 336F/F L Hydraulic Excavator Specifications

## Major Component Weights\*

	kg
Lower Structure (without counterweight and track)	
Standard Undercarriage	8100
Long Undercarriage	8700
Upper Structure (without front linkage)	
For 6.0 mt counterweight	9700
For 7.0 mt counterweight	10 000
Counterweight	
6.0 mt	6000
7.0 mt	7000
Boom (includes lines, pins and stick cylinder)	
HD Reach Boom – 6.50 m	4100
ES Reach Boom – 6.50 m	4300
Mass Boom – 6.18 m	4200
Stick (includes lines, pins and bucket cylinder)	
R3.2DB HD	1800
R3.2DB ES	1900
M2.55TB	2100
Track Shoes (Standard)	
600 mm double grouser	4500
600 mm triple grouser	3700
700 mm triple grouser	4000
800 mm triple grouser	4700
Track Shoes (Long)	
600 mm triple grouser	4100
600 mm double grouser	4900
700 mm triple grouser	4300
800 mm triple grouser	5100

\*Base machine includes 75 kg operator weight and 90% fuel weight, and undercarriage with center guard.

## Bucket for 336F/F L in Japan Market

1.4 m <sup>3</sup> DB (J400)	Mass 1.6 m <sup>3</sup> DB (J400)	1.9 m <sup>3</sup> TB (J460)	HD1.5 m <sup>3</sup> TB (J460)
HD1.4 m <sup>3</sup> DB (J460)	Mass 1.9 m <sup>3</sup> DB (J400)	2.0 m <sup>3</sup> TB (J460)	HD1.4 m <sup>3</sup> TB (J460N)
1.5 m <sup>3</sup> DB (J400)	1.6 m <sup>3</sup> TB (J460)	HD1.4 m <sup>3</sup> TB (J460)	HD1.5 m <sup>3</sup> TB (J460N)
HD 1.5 m <sup>3</sup> DB (J460)			



# 336F/F L Standard Equipment

## Standard Equipment

Standard equipment may vary. Consult your Cat dealer for details.

### ENGINE

- Cat C9.3 ACERT diesel engine
- Meets Japan 2014 (Tier 4 Final) emission standards
- 2300 m altitude capability
- Electric priming pump
- Automatic engine speed control
- Standard, economy power modes
- Two-speed travel
- Side-by-side cooling system
- Radial seal air filter
- Primary filter with water separator and water separator indicator switch
- Fuel differential indicator switch in fuel line
- 2×4 micron main filters and 1×10 micron primary filter in fuel line
- Air cleaner
- Water level indicator for water separator

### HYDRAULIC SYSTEM

- Regeneration circuit for boom and stick
- Reverse swing dampening valve
- Automatic swing parking brake
- High performance hydraulic return filter
- Capability of installing HP stackable valve and medium and QC valve
- Capability of installing additional auxiliary pump (up to 80 L/min) and circuit
- Capability of installing boom lowering control device and stick lowering check valve

### CAB

- Pressurized operator station with positive filtration
- Wiper, parallel or radial
- Mirror package
- Sliding upper door window (left-hand cab door)
- Glass-breaking safety hammer
- Coat hook
- Beverage holder
- Literature holder
- Radio with MP3 auxiliary audio port
- Two stereo speakers
- Storage shelf suitable for lunch or toolbox
- Color LCD display with warning, filter/fluid change, and working hour information
- Adjustable armrest
- Height adjustable joystick consoles
- Neutral lever (lock out) for all controls
- Travel control pedals with removable hand levers
- Capability of installing two additional pedals
- Two power outlets, 10 amp (total)
- Laminated glass front upper window and tempered other windows
- Seatbelt
- Seat, high-back air suspension with heater and cooling
- Air pre-filter
- Ashtray

### UNDERCARRIAGE

- Grease Lubricated Track GLT2, resin seal
- Towing eye on base frame
- Heavy duty bottom guard
- Heavy duty travel motor guard

### ELECTRICAL

- 80 amp alternator
- Circuit breaker

### LIGHTS

- Exterior lights integrated into storage box
- Cab and boom lights with time delay

### SECURITY

- Cat one key security system
- Door locks
- Cap locks on fuel and hydraulic tanks
- Lockable external tool/storage box
- Signaling/warning horn
- Secondary engine shutoff switch
- Openable skylight for emergency exit
- Rearview camera
- Cat MSS (anti-theft device)

## Optional Equipment

Optional equipment may vary. Consult your Cat dealer for details.

### ELECTRICAL

- Starting kit, cold weather
- Travel alarm

### HYDRAULIC SYSTEM

- Control pattern quick-changer
- HP pressure lines for boom and stick
- MP pressure lines for boom and stick
- Grease gun with holder
- Tool kit

### CAB

- 70/30 front windshield with removable lower windshield with in cab storage bracket
- One-piece front windshield
- Sunscreen
- Rain protector

### UNDERCARRIAGE

- Undercarriage:
  - Long
  - Standard

- Tracks:
  - 600 mm double grouser shoes
  - 600 mm triple grouser shoes
  - 700 mm triple grouser shoes
  - 800 mm triple grouser shoes

### GUARDS

- Full length track guiding guard
- Center track guiding guard
- Swivel guard
- Rubber bumpers

### COUNTERWEIGHT

- 6.0 mt
- 7.0 mt

### FRONT LINKAGE

- Bucket linkage (without lifting eye)
  - DB family
  - TB family
  - Demolition (bucket linkage)
- Extreme Service
  - 6.5 m reach boom with left- and right-side light
  - 3.2 m stick

- Heavy Duty
  - 6.5 m reach boom with left- and right-side light
  - R2.8DB stick
  - R3.2DB stick
- Mass boom
  - 6.18 m with left- and right-side light
  - M2.55TB stick

### SECURITY

- FOGS, bolt-on
- Mesh guard

### TECHNOLOGY

- Cat Grade Control
- Product Link

### ENGINE

- Quick drains engine and hydraulic oil (QuickEvac)









For more complete information on Cat products, dealer services, and industry solutions, visit us on the web at [www.cat.com](http://www.cat.com)

© 2017 Caterpillar  
All rights reserved

Materials and specifications are subject to change without notice. Featured machines in photos may include additional equipment. See your Cat dealer for available options.

CAT, CATERPILLAR, SAFETY.CAT.COM, their respective logos, "Caterpillar Yellow" and the "Power Edge" trade dress, as well as corporate and product identity used herein, are trademarks of Caterpillar and may not be used without permission.

VisionLink is a trademark of Trimble Navigation Limited, registered in the United States and in other countries.

Based on the Labor, Safety and Health Laws in Japan, employer of small construction equipment are required to provide specific training for all operators on machines with ship weight less than 3 metric ton. For machines greater than 3 metric ton, operator needs to obtain operator license certification from a Government approved registered training school.

AEHQ7910-01  
Replaces AEHQ7910  
(Japan)

