



Cat[®] 918M

COMPACT WHEEL LOADER

FEATURES:

- **Cat[®] Optimized Z-bar Loader Linkage** – The Cat Optimized Z-bar Loader linkage combines the digging efficiency of a traditional Z-bar with tool carrier capabilities for great performance and versatility. With parallel lift and high tilt forces throughout the working range you can safely and confidently handle loads with precise control. A High Lift option is available to extend both reach and dump clearance for more demanding tasks.
- **Work Tools** – The 918M features the Cat exclusive, Performance Series Buckets, as well as high visibility pallet forks. These tools enhance productivity and are available with either an Integrated Toolcarrier (IT), ISO (wide) or Fusion interface coupler style. Legacy coupler tools such as brooms, grapple buckets, multi-purpose buckets and other work tools remain compatible.
- **Hydraulics and Controls** – State of the art electro-hydraulic system provides low effort, fine control with fast cycle times. All-in-one joystick helps keep eyes on the work. Operator can adjust machine responsiveness with the push of a button, which allows the operator to set up the machine exactly the way they want it based on the application. High Flow option allows for the use of even the most demanding work tools.
- **Tuned Drivetrain** – Smooth shifting and powerful acceleration is matched with modulated hydrostatic braking in the inching/braking pedal, creating a rhythm for material moving. Creeper and electronic engine speed control makes broom and snow blower work easy. Operator tunes between smooth or aggressive shifting with the push of a button.
- **Cab** – All around visibility is further enhanced with the availability of a rearview camera. The deluxe cab ensures operator comfort with a heated, air suspension seat and easy to use controls. Available features such as Implement and Hystat Aggressiveness, Ride Control, Lift and Tilt Kickouts, Engine Speed Control and Rimpull Control allow the operator to customize the machine via a soft touch keypad.
- **Serviceability** – Extended service intervals and excellent service access make daily checks quick and easy allowing you to get to work sooner.
- **Efficiently Powerful** with its high full turn tipping loads, powerful breakout forces and increased engine power the M Series delivers a balanced solution for all customer applications.
- **Standard Fuel Savings Features** such as Eco Mode, On Demand Cooling Fan, and Auto Engine Idle Shutdown make the 918M both powerful and fuel efficient.

Specifications

Engine

| | | |
|----------------------|-----------------|---------------------|
| Engine Model | Cat C4.4 ACERT™ | |
| Maximum Gross Power: | | |
| Maximum Engine Speed | 2,350 RPM | |
| SAE J1995 | 87 kW | 117 hp |
| ISO 14396 | 86 kW | 115 hp |
| DIN ISO 14396 | 86 kW | 117 hp |
| Rated Net Power: | | |
| Rated Engine Speed | 2,200 RPM | |
| SAE J1349 | 83 kW | 112 hp |
| ISO 9249 | 84 kW | 113 hp |
| DIN ISO 14396 | 84 kW | 114 hp |
| Displacement | 4.4 L | 268 in ³ |
| Bore | 105 mm | 4.13 in |
| Stroke | 127 mm | 5.00 in |

Engine (continued)

| | | |
|-----------------------|---------|------------|
| Maximum Gross Torque: | | |
| SAE J1995 | 504 N-m | 372 lbf-ft |
| ISO 14396 | 500 N-m | 369 lbf-ft |
| Maximum Net Torque: | | |
| SAE J1349 | 490 N-m | 361 lbf-ft |
| ISO 9249 | 495 N-m | 365 lbf-ft |

- Engine meets U.S. EPA Tier 4 Final/EU Stage IV emission standards.
- Net power advertised is the power available at the flywheel plus front drive implement pump when the engine is equipped with fan, air cleaner, muffler and alternator.

Buckets

| | | |
|-------------------------------------|------------------------|-------------------------|
| Bucket Capacities – General Purpose | 1.3-1.9 m ³ | 1.7-2.5 yd ³ |
|-------------------------------------|------------------------|-------------------------|



918M Compact Wheel Loader

Steering

| | | |
|---|-------------|--------------|
| Steering Articulation Angle (each direction) | 40 degrees | |
| Maximum Flow – Steering Pump | 82 L/min | 21.7 gal/min |
| Maximum Working Pressure – Steering Pump | 22 000 kPa | 3,190 psi |
| Steering Cycle Times (full left to full right): | | |
| At 2,350 RPM: 90 RPM steering wheel speed | 2.3 seconds | |
| Number of Steering Wheel Turns – full left to full right or full right to full left | 3.4 turns | |

Loader Hydraulic System

| | | |
|---|------------|--------------|
| Maximum Flow – Implement Pump | 165 L/min | 43.6 gal/min |
| 3rd Function, Maximum Flow, Standard | 95 L/min | 25 gal/min |
| 3rd Function, Maximum Flow, High | 150 L/min | 40 gal/min |
| 4rd Function, Maximum Flow | 95 L/min | 25 gal/min |
| Maximum Working Pressure – Implement Pump | 28 000 kPa | 4,061 psi |
| Relief Pressure – Tilt Cylinder | 32 000 kPa | 4,641 psi |
| 3rd Function Relief Pressure | 32 000 kPa | 4,641 psi |
| 4th Function Relief Pressure | 32 000 kPa | 4,641 psi |

Hydraulic Cycle Times:

| | |
|---|--------------|
| Raise (ground level to maximum lift) | 4.8 seconds |
| Dump (at maximum reach) | 1.8 seconds |
| Rack Back | 2.2 seconds |
| Float Down (maximum lift to ground level) | 2.7 seconds |
| Total Cycle Time | 11.5 seconds |

Note: All cycle times listed are with cylinder snubbing turned off.

Service Refill Capacities

| | | |
|-----------------------------------|---------|----------|
| Fuel Tank | 154.0 L | 40.7 gal |
| Cooling System | 21.5 L | 5.7 gal |
| Engine Crankcase | 8.8 L | 2.3 gal |
| Axles: | | |
| Front | 17 L | 4.5 gal |
| Rear | 17 L | 4.5 gal |
| Hydraulic System (including tank) | 98.0 L | 25.9 gal |
| Hydraulic Tank | 55.0 L | 14.5 gal |
| Transmission | 3.4 L | 0.9 gal |
| Diesel Exhaust Fluid (DEF) Tank | 18.9 L | 5.0 gal |

- DEF used in Cat Selective Catalyst Reduction (SCR) systems must meet the requirements outlined in the International Organization for Standardization (ISO) standard 22241-1.

Transmission

| | | |
|---------------------------|---------|----------|
| Forward and Reverse: | | |
| Low Range, Speed Range 1* | 10 km/h | 6.3 mph |
| Low Range, Speed Range 2 | 20 km/h | 12.5 mph |
| High Range | 40 km/h | 25 mph |

*Creeper Control allows speed control from a stand still up to 10 km/h (6.3 mph). The Creeper Control will only work in Range 1.

Axles

| | |
|-------|---------------------------------|
| Front | Fixed |
| | Locking differential (standard) |
| Rear | Oscillating ±11 degrees |
| | Locking differential (standard) |

Cab

| | |
|------|--|
| ROPS | SAE J1040 MAY94, ISO 3471-1994 |
| FOPS | SAE J/ISO 3449 APR98, Level II, ISO 3449:2005 Level II |

- Cab and Rollover Protective Structures (ROPS) are standard in North America and Europe.
- The declared dynamic operator sound pressure levels per ISO 6396:2008*, when properly installed and maintained, is 77 dB(A).
- The labelled sound power level for the CE marked configurations when measured according to the test procedure and conditions specified in 2000/14/EC is 103 dB(A).

*The measurements were conducted with the cab doors and windows closed.

Tires

| | |
|------------------------|----------------------------|
| Standard Size | 17.5 R25 XTLA L2 |
| Other Choices Include: | 17.5-25 12PR L2 |
| | 17.5-R25 XHA L3 |
| | 17.5-R25 L2/L3, 3PC Rim |
| | 17.5-25 16PR L3, 3PC Rim |
| | 17.5-25 GY L2/L3 |
| | 17.5-25 12PR L2, SNOW |
| | 20.5 R25 L2 Snow, 3PC Rim |
| | 20.5 R25 XHA-2 L3, 3PC Rim |
| | 20.5 -25 12 PR |
| | Solid Tires |

- Other tire choices are available. Contact your Cat dealer for details.
- In certain applications, the loader's productive capabilities may exceed the tire's tonnes-km/h (ton-mph) capabilities.
- Caterpillar recommends that you consult a tire supplier to evaluate all conditions before selecting a tire model.

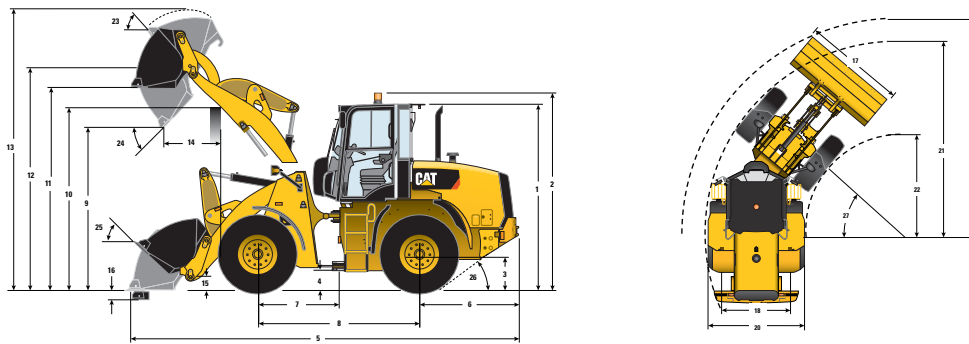
Tire Options

| | | 17.5-25 L2 SGL | 17.5X25 SOLID | 20.5 R25 XHA2 |
|-------------------------------------|---------|-------------------|------------------|------------------|
| Vertical Heights | mm (in) | -5 (-0.2) | +37 (+1.5) | +50 (+2) |
| Reach: Bucket at 45° | mm (in) | -7 (-0.3) | -9 (-0.4) | -75 (-3) |
| Width: Over Tires | mm (in) | +13 (+0.5) | -25 (-1) | +87 (+4) |
| Turning Radius: Outside of Tires | mm (in) | +7 (+0.3) | -11 (-0.4) | +18 (+1) |
| Tipping Load – Straight | kg (lb) | -57 (-126) | +957 (+2,110) | +366 (+807) |
| Tipping Load – Full Turn | kg (lb) | -49 (-108) | +827 (+1,823) | +317 (+699) |
| Operating Weight | kg (lb) | -92 (-203) | +1576 (+3,474) | +516 (+1,138) |

This chart represents the change with tire option as compared to standard XTLA tire.

918M Compact Wheel Loader

Dimensions and Operating Specifications (All dimensions are approximate. Dimensions vary with bucket and tire choice.)



| | Standard Lift | | | | | | | |
|---|---------------|------------|------------|------------|------------|------------|------------|------------|
| | PO | | ISO | | IT | | Fusion | |
| *Vary with bucket. | | | | | | | | |
| **Vary with tire. | | | | | | | | |
| ** 1 Height: Ground to Cab | 3110 mm | 10'2" | 3110 mm | 10'2" | 3110 mm | 10'2" | 3110 mm | 10'2" |
| ** 2 Height: Ground to Beacon | 3300 mm | 10'9" | 3300 mm | 10'9" | 3300 mm | 10'9" | 3300 mm | 10'9" |
| ** 3 Height: Ground Axle Center | 640 mm | 2'1" | 640 mm | 2'1" | 640 mm | 2'1" | 640 mm | 2'1" |
| ** 4 Height: Ground Clearance | 438 mm | 1'5" | 438 mm | 1'5" | 438 mm | 1'5" | 438 mm | 1'5" |
| * 5 Length: Overall | 6617 mm | 21'8" | 6768 mm | 22'2" | 6719 mm | 22'0" | 6829 mm | 22'4" |
| 6 Length: Rear Axle to Bumper | 1615 mm | 5'3" | 1615 mm | 5'3" | 1615 mm | 5'3" | 1615 mm | 5'3" |
| 7 Length: Hitch to Front Axle | 1350 mm | 4'5" | 1350 mm | 4'5" | 1350 mm | 4'5" | 1350 mm | 4'5" |
| 8 Length: Wheel Base | 2700 mm | 8'10" | 2700 mm | 8'10" | 2700 mm | 8'10" | 2700 mm | 8'10" |
| * 9 Clearance: Bucket at 45 degrees | 2857 mm | 9'4" | 2754 mm | 9'0" | 2780 mm | 9'1" | 2708 mm | 8'10" |
| ** 10 Clearance: Load over Height | 3381 mm | 11'1" | 3381 mm | 11'1" | 3381 mm | 11'1" | 3381 mm | 11'1" |
| ** 11 Clearance: Level Bucket | 3563 mm | 11'8" | 3564 mm | 11'8" | 3563 mm | 11'8" | 3493 mm | 11'5" |
| ** 12 Height: Bucket Pin | 3818 mm | 12'6" | 3818 mm | 12'6" | 3818 mm | 12'6" | 3818 mm | 12'6" |
| ** 13 Height: Overall | 4859 mm | 15'11" | 4962 mm | 16'3" | 4928 mm | 16'1" | 4857 mm | 15'11" |
| * 14 Reach: Bucket at 45 degrees | 902 mm | 2'11" | 1013 mm | 3'3" | 966 mm | 3'2" | 972 mm | 3'2" |
| 15 Carry Height: Bucket Pin | 353 mm | 1'1" | 345 mm | 1'1" | 353 mm | 1'1" | 355 mm | 1'1" |
| ** 16 Dig Depth | 60 mm | 2.3" | 60 mm | 2.3" | 60 mm | 2.3" | 131 mm | 5.1" |
| 17 Width: Bucket | 2401 mm | 7'10" | 2401 mm | 7'10" | 2401 mm | 7'10" | 2450 mm | 8'0" |
| 18 Width: Tread Center | 1800 mm | 5'10" | 1800 mm | 5'10" | 1800 mm | 5'10" | 1800 mm | 5'10" |
| 19 Turning Radius: Over Bucket | 5400 mm | 17'8" | 5445 mm | 17'10" | 5434 mm | 17'9" | 5483 mm | 17'11" |
| 20 Width: Over Tires | 2259 mm | 7'4" | 2259 mm | 7'4" | 2259 mm | 7'4" | 2259 mm | 7'4" |
| 21 Turning Radius: Outside of Tires | 4877 mm | 16'0" | 4877 mm | 16'0" | 4877 mm | 16'0" | 4852 mm | 15'11" |
| 22 Turning Radius: Inside of Tires | 2563 mm | 8'4" | 2563 mm | 8'4" | 2563 mm | 8'4" | 2583 mm | 8'5" |
| 23 Rack Angle at Full Lift | 55 degrees | | 55 degrees | | 54 degrees | | 56 degrees | |
| 24 Dump Angle at Full Lift | 47 degrees | | 47 degrees | | 47 degrees | | 46 degrees | |
| 25 Rack Angle at Carry | 44 degrees | | 43 degrees | | 43 degrees | | 45 degrees | |
| 26 Departure Angle | 33 degrees | | 33 degrees | | 33 degrees | | 33 degrees | |
| 27 Articulation Angle | 40 degrees | | 40 degrees | | 40 degrees | | 40 degrees | |
| *Tipping Load – Straight (ISO 14397-1) | 7192 kg | 15,851 lb | 6607 kg | 14,561 lb | 6749 kg | 14,874 lb | 6388 kg | 14,079 lb |
| *Tipping Load – Straight Rigid Tire | 7492 kg | 16,512 lb | 6882 kg | 15,167 lb | 7030 kg | 15,494 lb | 6654 kg | 14,665 lb |
| *Tipping Load – Full Turn (ISO 14397-1) | 6091 kg | 13,424 lb | 5563 kg | 12,260 lb | 5690 kg | 12,540 lb | 5488 kg | 12,095 lb |
| *Tipping Load – Full Turn Rigid Tire | 6479 kg | 14,279 lb | 5918 kg | 13,043 lb | 6053 kg | 13,340 lb | 5838 kg | 12,866 lb |
| *Breakout Force | 8798 kgf | 19,390 lbf | 7515 kgf | 16,563 lbf | 7875 kgf | 17,356 lbf | 7624 kgf | 16,803 lbf |
| Operating Weight | 9318 kg | 20,537 lb | 9565 kg | 21,082 lb | 9543 kg | 21,032 lb | 9627 kg | 21,218 lb |

Dimensions listed are for a machine configured with general purpose buckets, bolt-on cutting edges, standard guarding, 80 kg (176 lb) operator, full fluids and 17.5 R25 (L2) XTLA tires.

918M Compact Wheel Loader

Dimensions and Operating Specifications (All dimensions are approximate. Dimensions vary with bucket and tire choice.)

| | High Lift | | | | | | | |
|---|------------|------------|------------|------------|------------|------------|------------|------------|
| | PO | | ISO | | IT | | Fusion | |
| **Vary with bucket. | | | | | | | | |
| **Vary with tire. | | | | | | | | |
| ** 1 Height: Ground to Cab | 3110 mm | 10'2" | 3110 mm | 10'2" | 3110 mm | 10'2" | 3110 mm | 10'2" |
| ** 2 Height: Ground to Beacon | 3300 mm | 10'9" | 3300 mm | 10'9" | 3300 mm | 10'9" | 3300 mm | 10'9" |
| ** 3 Height: Ground Axle Center | 640 mm | 2'1" | 640 mm | 2'1" | 640 mm | 2'1" | 640 mm | 2'1" |
| ** 4 Height: Ground Clearance | 438 mm | 1'5" | 438 mm | 1'5" | 438 mm | 1'5" | 438 mm | 1'5" |
| * 5 Length: Overall | 7071 mm | 23'2" | 7222 mm | 23'8" | 7173 mm | 23'6" | 7272 mm | 23'10" |
| 6 Length: Rear Axle to Bumper | 1615 mm | 5'3" | 1615 mm | 5'3" | 1615 mm | 5'3" | 1615 mm | 5'3" |
| 7 Length: Hitch to Front Axle | 1350 mm | 4'5" | 1350 mm | 4'5" | 1350 mm | 4'5" | 1350 mm | 4'5" |
| 8 Length: Wheel Base | 2700 mm | 8'10" | 2700 mm | 8'10" | 2700 mm | 8'10" | 2700 mm | 8'10" |
| * 9 Clearance: Bucket at 45 degrees | 3163 mm | 10'4" | 3063 mm | 10'0" | 3086 mm | 10'1" | 3027 mm | 9'11" |
| ** 10 Clearance: Load over Height | 3447 mm | 11'3" | 3447 mm | 11'3" | 3447 mm | 11'3" | 3447 mm | 11'3" |
| ** 11 Clearance: Level Bucket | 3852 mm | 12'7" | 3852 mm | 12'7" | 3852 mm | 12'7" | 3781 mm | 12'4" |
| ** 12 Height: Bucket Pin | 4106 mm | 13'5" | 4106 mm | 13'5" | 4106 mm | 13'5" | 4106 mm | 13'5" |
| ** 13 Height: Overall | 5147 mm | 16'10" | 5250 mm | 17'2" | 5216 mm | 17'1" | 5146 mm | 16'10" |
| * 14 Reach: Bucket at 45 degrees | 1130 mm | 3'8" | 1244 mm | 4'0" | 1194 mm | 3'10" | 1221 mm | 4'0" |
| 15 Carry Height: Bucket Pin | 491 mm | 1'7" | 470 mm | 1'6" | 491 mm | 1'7" | 484 mm | 1'7" |
| ** 16 Dig Depth | 213 mm | 8.3" | 213 mm | 8.3" | 213 mm | 8.3" | 284 mm | 11.1" |
| 17 Width: Bucket | 2401 mm | 7'10" | 2401 mm | 7'10" | 2401 mm | 7'10" | 2450 mm | 8'0" |
| 18 Width: Tread Center | 1800 mm | 5'10" | 1800 mm | 5'10" | 1800 mm | 5'10" | 1800 mm | 5'10" |
| 19 Turning Radius: Over Bucket | 5620 mm | 18'5" | 5668 mm | 18'7" | 5659 mm | 18'6" | 5709 mm | 18'8" |
| 20 Width: Over Tires | 2259 mm | 7'4" | 2259 mm | 7'4" | 2259 mm | 7'4" | 2259 mm | 7'4" |
| 21 Turning Radius: Outside of Tires | 4877 mm | 16'0" | 4877 mm | 16'0" | 4877 mm | 16'0" | 4877 mm | 16'0" |
| 22 Turning Radius: Inside of Tires | 2563 mm | 8'4" | 2563 mm | 8'4" | 2563 mm | 8'4" | 2563 mm | 8'4" |
| 23 Rack Angle at Full Lift | 47 degrees | | 47 degrees | | 46 degrees | | 48 degrees | |
| 24 Dump Angle at Full Lift | 44 degrees | | 44 degrees | | 44 degrees | | 43 degrees | |
| 25 Rack Angle at Carry | 47 degrees | | 46 degrees | | 46 degrees | | 48 degrees | |
| 26 Departure Angle | 33 degrees | | 33 degrees | | 33 degrees | | 33 degrees | |
| 27 Articulation Angle | 40 degrees | | 40 degrees | | 40 degrees | | 40 degrees | |
| *Tipping Load – Straight (ISO 14397-1) | 6161 kg | 13,578 lb | 5644 kg | 12,439 lb | 5766 kg | 12,708 lb | 5487 kg | 12,093 lb |
| *Tipping Load – Straight Rigid Tire | 6418 kg | 14,145 lb | 5879 kg | 12,957 lb | 6006 kg | 13,237 lb | 5715 kg | 12,595 lb |
| *Tipping Load – Full Turn (ISO 14397-1) | 5277 kg | 11,630 lb | 4804 kg | 10,588 lb | 4915 kg | 10,832 lb | 4668 kg | 10,288 lb |
| *Tipping Load – Full Turn Rigid Tire | 5614 kg | 12,373 lb | 5111 kg | 11,264 lb | 5229 kg | 11,524 lb | 4966 kg | 10,945 lb |
| *Breakout Force | 8309 kgf | 18,313 lbf | 7088 kgf | 15,621 lbf | 7416 kgf | 16,344 lbf | 7259 kgf | 15,998 lbf |
| Operating Weight | 9685 kg | 21,345 lb | 9932 kg | 21,890 lb | 9910 kg | 21,840 lb | 9994 kg | 22,026 lb |

Dimensions listed are for a machine configured with general purpose buckets, bolt-on cutting edges, standard guarding, 80 kg (176 lb) operator, full fluids and 17.5 R25 (L2) XTLA tires.

For more complete information on Cat products, dealer services, and industry solutions, visit us on the web at www.cat.com

© 2019 Caterpillar
All rights reserved

Materials and specifications are subject to change without notice. Featured machines in photos may include additional equipment. See your Cat dealer for available options.

CAT, CATERPILLAR, LET'S DO THE WORK, their respective logos, "Caterpillar Yellow," the "Power Edge" and Cat "Modern Hex" trade dress as well as corporate and product identity used herein, are trademarks of Caterpillar and may not be used without permission.

AEHQ7803-03 (04-2019)
Replaces AEHQ7803-02
(EU, NACD)

