



[www.FGWilson.com](http://www.FGWilson.com)

power moving *forward*

225 – 375 KVA RANGE

*Performance | Durability | Serviceability*



Uninterrupted power is essential to everyday modern life, FG Wilson is here to be your power moving forward.

Our latest product range from 225 – 375 kVA offers practicality and functionality whilst continuing to provide quality and reliability. Whether you need prime or standby power you are ideally equipped with FG Wilson and our expert local support.

We have everything you need to be your...

...power moving *forward*



Powered by a Perkins engine providing world class **power density** coupled with an **industry leading** alternator the **225 – 375 kVA Range** can be relied upon to support your needs.

The range is available with both **fuel-optimised** and **EU11a compliance** offerings. A rugged galvanised enclosure provides **excellent protection** from the elements while **user friendly**, FG Wilson digital panels allow simple power control.

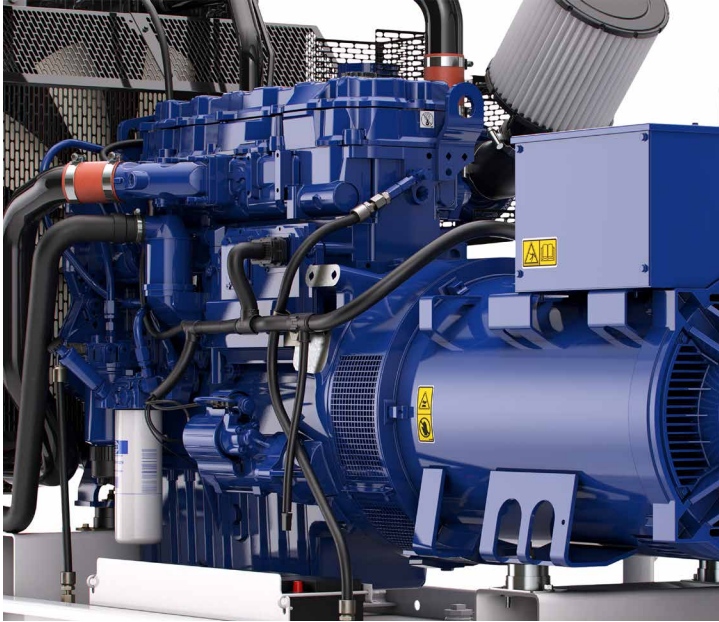
All this, backed by a **world class** Dealer network, our new range meets your essential criteria.





# Open Set Range

This new range employs the power and efficiency you come to expect from the world-renowned Perkins engines. The 225 – 375 kVA Range is designed with fuel optimisation in mind for a wide range of industry sectors including data centres, healthcare and retail.



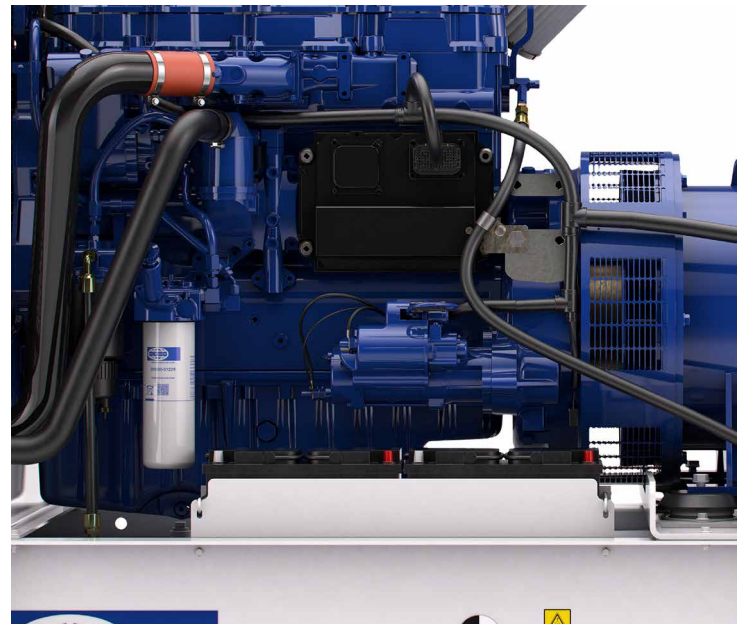
The 1500 Series Perkins engines provide reliable power suitable for a wide range of applications and markets. Combined with the Marelli & Leroy Somer alternators, providing Ingress Protection IP23 as standard, a trusted performance is guaranteed.



Cable access is gained directly underneath the control panel for ease of installation with the control panel tower providing full access to all components and wiring.



Designed for 8 hours running at full load in prime applications, the compact base frame provides drag and lifting points as standard, aiding transportation and installation.



Servicing and maintenance is fast and efficient with easily accessible components. Oil and coolant drains provide convenient service accessibility while the fuel fill and gauge are positioned together for easy fill and monitoring.



The base frame provides a solid foundation within a compact footprint. Constructed from high-grade, heavy-duty steel and further protected by powder coat paint, ensuring durability and maximum corrosion resistance.



The robust steel enclosure structure is protected by advanced powder coat paint and can be further protected with a galvanised steel. Additionally, safeguarding against handling damage has been achieved thanks to the base frame extending beyond the enclosure. Installation and servicing is quick and easy with removable side hinged doors and lift-off end panels providing optimal access, complemented by easily accessible fuel transfer connection points.



# Enclosed Set Range

The enclosures ensure a high quality generator set with sound attenuation and protection suitable for a diverse range of applications. The strong, clean design of the enclosure is available in either mild or galvanised steel, allowing you to customise the range to suit your needs.



Side hinged doors, on each side of the enclosure, provide ample access to all necessary components during installation and servicing. Lift-off hinges enable the doors to be removed at an angle of 90°, facilitating easy servicing in confined installation spaces.



Robust, lockable latches ensure a flush (secure) door seal with the enclosure frame helping to protect your investment against vandalism and theft.

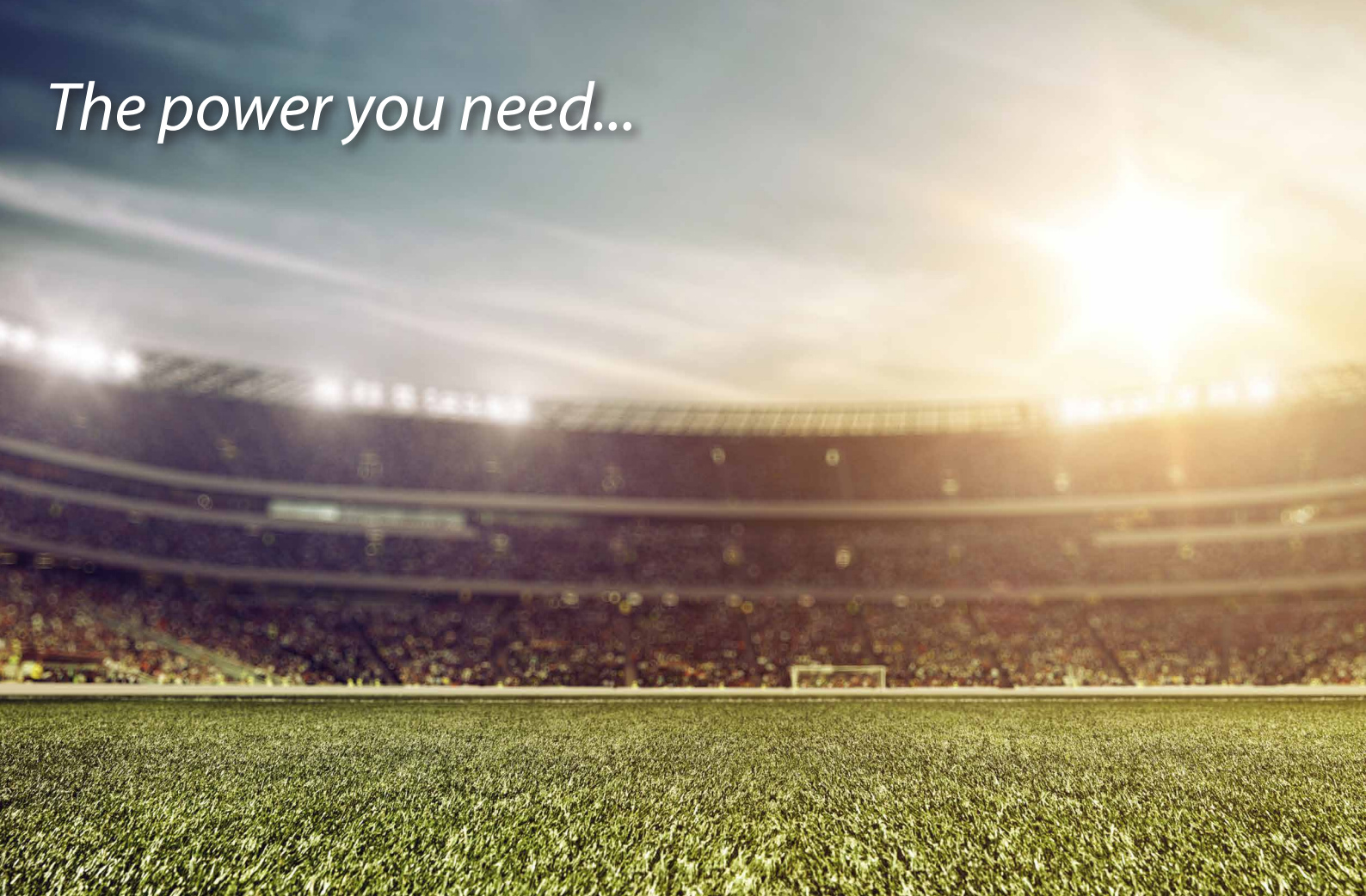


Generator set running conditions can be easily monitored via the large viewing window with an additional emergency stop button conveniently located beside the control panel on the outside of the enclosure. Cable access is gained directly underneath the control panel via the end of the base frame.



Unique modular air handling units, manufactured from a high-grade composite material, optimum corrosion resistance whilst contributing to a reduction in noise output.

*The power you need...*



**...for Events**



**...for Datacentres**



...for Retail



...for Healthcare

# Technical Data

225 – 375 kVA Range

225 – 375 KVA MODELS										
Model	Engine	Alternator	50 Hz				60 Hz			
			Prime		Standby		Prime		Standby	
			kVA	kW	kVA	kW	kVA	kW	kVA	kW
P249-5	1506A-E88TAG2	MJB 250 LA4	-	-	-	-	225	180	250	200
P250-5	1506A-E88TAG2	MJB 250 LB4	230	184	250	200	-	-	-	-
P275-2*	1506D-E88TAG4	MJB 250 LB4	250	200	275	220	-	-	-	-
P275-5	1506A-E88TAG3	MJB 250 LB4	250	200	275	220	-	-	-	-
P300-4*	1506D-E88TAG4	FG26A230	275	220	300	240	-	-	-	-
P300-5	1506A-E88TAG4	FG26A230	275	220	300	240	-	-	-	-
P313-5	1506A-E88TAG3	MJB 250 LB4	-	-	-	-	281.3	225	312.5	250
P330-5	1506A-E88TAG5	FG26A250	300	240	330	264	-	-	-	-
P344-5	1506A-E88TAG4	FG26A250	-	-	-	-	312.5	250	343.8	275
P375-4*	1506D-E88TAG4	FG26A250	-	-	-	-	337.5	270	375	300
P375-5	1506A-E88TAG5	FG26A250	-	-	-	-	337.5	270	375	300

\*EUIIIa

Ratings are based on maximum generator set output – this may vary depending on voltage code selected.

DIMENSIONS				
Open Set				
Model	Length (mm)	Width (mm)	Height (mm)	Weight (kg)
P249-5	2662	1071	1818	2056
P250-5	2662	1071	1818	2096
P275-2	2662	1071	1818	2096
P275-5	2662	1071	1818	2096
P300-4	2662	1071	1818	2110
P300-5	2662	1071	1818	2110
P313-5	2662	1071	1818	2096
P330-5	2662	1071	1818	2261
P344-5	2785	1071	1818	2261
P375-4	2785	1071	1818	2261
P375-5	2785	1071	1818	2261

\*EUIIIa

# Technical Data

225 – 375 kVA Range

DIMENSIONS								
Model	L1				L1 HA			
	Length (mm)	Width (mm)	Height (mm)	Weight (kg)	Length (mm)	Width (mm)	Height (mm)	Weight (kg)
P249-5	3900	1200	1867	2423	3975	1400	2032	2770
P250-5	3900	1200	1867	2463	3975	1400	2032	2810
P275-2*					3975	1400	2032	2810
P275-5	3900	1200	1867	2463	3975	1400	2032	2810
P300-4*					3975	1400	2032	2854
P300-5					3975	1400	2032	2854
P313-5	3900	1200	1867	2463	3975	1400	2032	2810
P330-5					3975	1400	2032	2854
P344-5					3975	1400	2032	2854
P375-4*					3975	1400	2032	2854
P375-5					3975	1400	2032	2854

DIMENSIONS				
Model	L2			
	Length (mm)	Width (mm)	Height (mm)	Weight (kg)
P249-5	3975	1400	1950	2770
P250-5	3975	1400	1950	2810
P275-2*	3975	1400	1950	2810
P275-5	3975	1400	1950	2810
P300-4*	3975	1400	1950	2854
P300-5	3975	1400	1950	2854
P313-5	3975	1400	1950	2810
P330-5	3975	1400	1950	2854
P344-5	3975	1400	1950	2854
P375-4*	3975	1400	1950	2854
P375-5	3975	1400	1950	2854

\*EUIIIa

# Standard Features

225 – 375 kVA Range

Fully adjustable electronic governor

Engine mounted battery charging alternator

Engine mounted fuel and water separator

Low oil pressure protection

High water temperature protection

Air filter

Alternator

Coastal insulation protection and RFI filter\*

AVR

Robust steel constructed baseframe

8hr fuel tank

Sloped top plate for fluid run off\*

Baseframe drag and lift points

Coolant drain valve

Lube oil drain valve

BSP fuel sockets

Battery connection cables, tray and clamp

3-POLE circuit breaker and power loom

Exhaust stub pipe

Single piece exhaust (enclosed only)

Radiator fan and charging alt guards

50% antifreeze (protection to -36oC)

\*Model Dependent

# Optional Features

225 – 375 kVA Range

---

## ENGINE/BASEFRAME MOUNTED ACCESSORIES

---

Electronic Governor (Full Electronic Engine)

Lead-Acid Battery (Dry)

Battery Isolator Switch

Silencer options

Single Element Cannister Air Cleaner

---

## FUEL SYSTEM ACCESSORIES

---

Skidbase, 8 hour and 24 hour tanks

Single Wall & Dual Wall Fuel Tanks

Heavy Duty Fuel Tanks

Low Fuel Level Shutdown 2 3 4

Fuel Level Alarm

Fuel Level Sender and Level Display 5

Manual Fuel & Lube Oil Pumps

---

## ENCLOSURES

---

Level 1 Sound Attenuated Enclosure

Level 1 High Ambient Sound Attenuated Enclosure

Level 2 Sound Attenuated Enclosure

---

\*Model Dependent

---

## ALTERNATOR OPTIONS

---

Anti-Condensation Heater and Panel Circuitry

Quadrature Droop Kit

Permanent Magnet

3 Phase Sensing

Alternator upgrade to IP23

Coastal Protection

Auxiliary Winding (3 Phase Sensing + Digital Voltage Regulator)

---

## COOLING SYSTEM ACCESSORIES

---

High Ambient Radiator

Low Coolant Alarms

Coolant Heater

---

*If you have any specific requirements not detailed above please contact your local Dealer to discuss your customisable options*

# ONE Global Standard

FG Wilson has built its reputation on providing you with reliable, fuel-efficient diesel and gas generator sets.

Our ONE Global Quality Standard ensures that every FG Wilson generator set is designed and manufactured to the highest UK standards. With world-class production processes replicated at all our manufacturing facilities, each achieving ISO 9001 and ISO 14001 certification, we deliver a quality product every time.

With worldwide logistics that span the globe, and a distribution network of 370 Dealers in over 150 countries, we provide reliable power and ongoing support when and where you need it.



Production line, China.



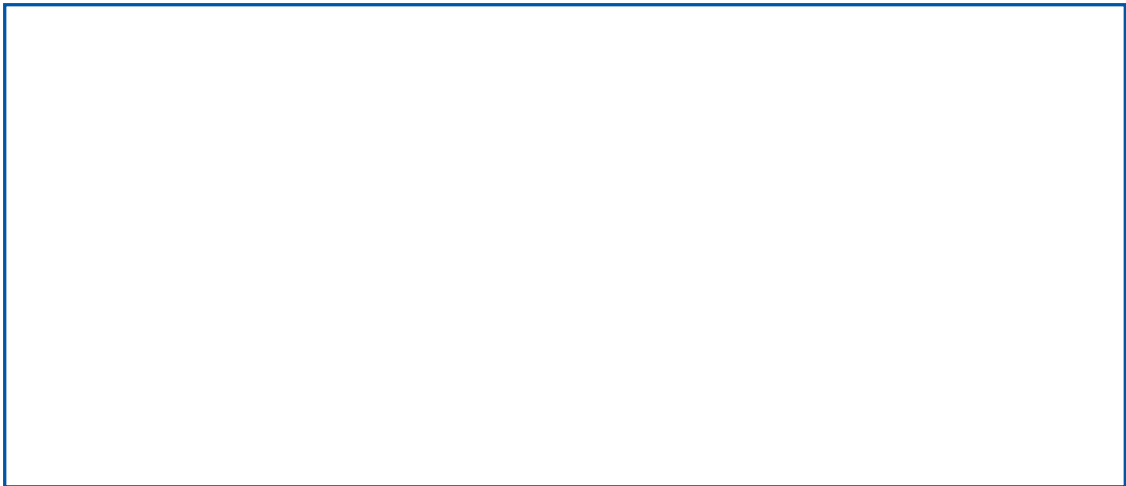
Engineering Centre of Excellence, Northern Ireland.







[www.FGWilson.com](http://www.FGWilson.com)



FG WILSON MANUFACTURES PRODUCT IN THE FOLLOWING LOCATIONS:

NORTHERN IRELAND • BRAZIL • CHINA • INDIA • USA

WITH HEADQUARTERS IN NORTHERN IRELAND, FG WILSON OPERATES THROUGH A GLOBAL DEALER NETWORK.

TO CONTACT YOUR LOCAL SALES OFFICE PLEASE VISIT THE FG WILSON WEBSITE AT [WWW.FGWILSON.COM](http://WWW.FGWILSON.COM).

FG WILSON IS A TRADING NAME OF CATERPILLAR (NI) LIMITED.

IN LINE WITH OUR POLICY OF CONTINUOUS PRODUCT DEVELOPMENT, WE RESERVE THE RIGHT TO CHANGE SPECIFICATION WITHOUT NOTICE.