

303.5E2 CR, 304E2 CR, 305E2 CR, 305.5E2 CR

Mini Hydraulic Excavators



	303.5E2 CR	304E2 CR	305E2 CR	305.5E2 CR
Weight (ROPS Canopy)	3605 kg	3865 kg	4755 kg	4995 kg
Standard Bucket Capacity	0.11 m ³	0.13 m ³	0.16 m ³	0.16 m ³
Engine Rated Power	17.7 kW	29.8 kW	30.0 kW	32.9 kW

Meets Japan 2014 emission standards for special-purpose vehicles compliant (304E2 CR, 305E2 CR, 305.5E2 CR).

Meets MLIT 3rd emission standards (303.5E2 CR).

MLIT designated super low-noise construction machinery.



オフロード法2014年
基準適合



国土交通省
第3次基準値排出ガス対策型



国土交通省
超低騒音型建設機械



Contents

Engine4

Operator Station.....5

Color Monitor.....6

Equipment to Meet Your Needs.....8

Versatility.....9

Serviceability.....10

Specifications.....12

Standard Equipment.....23

Optional Equipment.....23



303.5E2 CR



304E2 CR



All featured machines in photos include optional equipment.



305E2 CR



305.5E2 CR



Engine

Superior Power and Performance

High-Powered Cat® Engine*

Cat C2.4 diesel engine has achieved both lower emission and fuel consumption. While the computerized common-rail fuel injection system has contributed to lower fuel cost and lower noise level, the introduction of the latest aftertreatment technology has enabled the enhanced environmental performance.

Aftertreatment Technology with High Emission Purification Capacity*

DOC/DPF dual structure provides high emission purification capacity that is unaffected by outside temperature and air pressure and maintains the capacity for a long time. DPF revitalization system is adopted to burn the soot build-up during PM (particulate matter) removal – with exhaust heat. Revitalization runs automatically while the machine is in operation.

Fuel Consumption

Fuel consumption is reduced by approximately **12%**** on the 303.5E2 CR/304E2 CR/305E2 CR and **21%**** on the 305.5E2 CR.

**Not applicable for 303.5E2 CR.*

***Compared with the previous model in our in-house testing.*

DPF System*

Installation of the DPF system has dramatically improved the PM removal efficiency. It gives less load on the engine so the engine performance is steady even under low temperature or in high altitudes. Unlike other systems run by DOC only, it requires no additional cooling system or noise reduction device to lose its compactness.

Power On Demand*

Automatic system ensures optimal fuel efficiency through appropriate engine rating to meet all operational requirements as needed.

Smart Technology (303.5E2 CR)

Smart Technology can convert most of the engine power into the hydraulic power and realize low fuel consumption.

Auto Engine Shut-Off

Engine automatically shuts off when inactive for X minutes (programmable in the monitor from 3-15 minutes), provided hydraulic lever is up. Electronics remain powered after shut down.

Operator Station

Comfortable Working Environment

New Joystick and Wrist Rest Provide More Controllability with Less Operator Fatigue

Our new joystick is designed to provide excellent grip combined with greater maneuverability for maximum operation comfort. Height adjustable wrist rest also helps reduce operator fatigue while enhancing productivity.

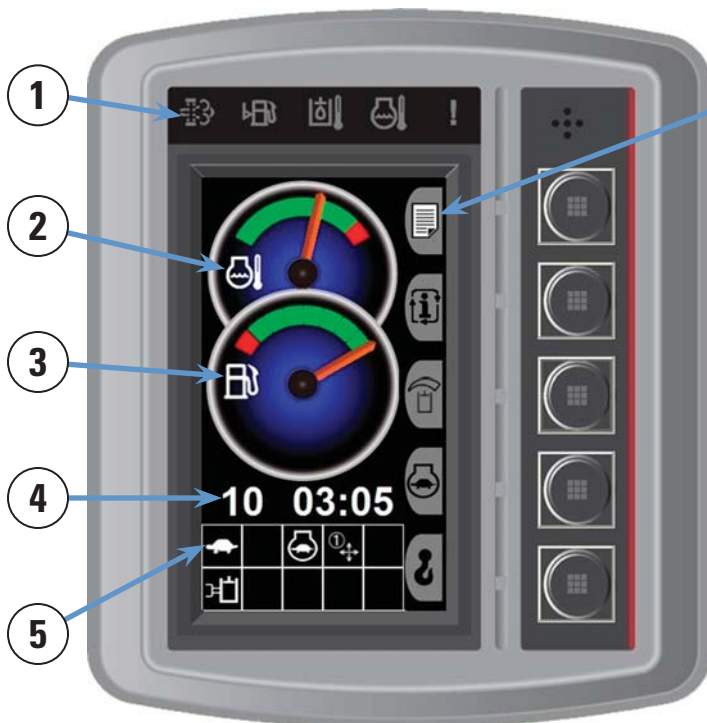


Auxiliary Line to Enhance Attachment Efficiency (Optional equipment)

Auxiliary Line provides a wider variety of applications for attachments, enhancing efficiency. For control, a sliding wheel switch on the operation lever has been adopted. It enables lighter, simpler fine adjustment and excellent controllability with the touch of a finger. The left pedal is available. Control can be switched between the pedal and the sliding wheel switch on the lever.

Color Monitor

Control Settings and Security System All in One Color Monitor



- 6 This all-in-one multi-information system provides various machine control including security features. Brighter LCD is easy on the eyes and changes its display colors at night when you turn on the lights. You can create your own shortcut keys with a touch of a button to customize the control setting to match your operation patterns.
- 1) Warnings (Fuel Level/Water Temperature/Oil Temperature, etc.)
 - 2) Water Temperature Gauge
 - 3) Fuel Gauge
 - 4) Engine Axle Dial/Current Time Display
 - 5) Various Settings (Travel Speed Gear/AEC/etc.)
 - 6) Guidance for Each Button Function

Screen display shown is an illustration



Password Screen



Security Time-Out Screen

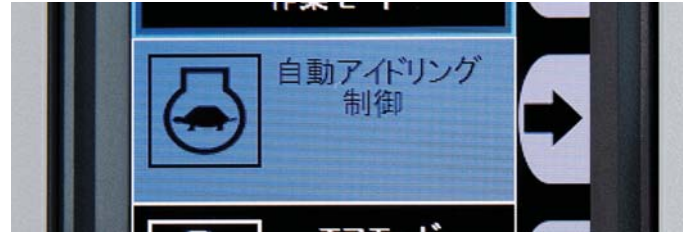
Password Protected Security System Comes Standard

An anti-theft feature that requires a four digit numeric password to start the engine is standard on all models. You can create up to five user passwords.

Machine Security System (MSS) is an even more powerful anti-theft device and is available as an option.

Automatic Deceleration (AEC) to Reduce Idling Fuel Consumption

When the operation lever is in neutral for more than three seconds, it will automatically lower the engine speed to reduce noise, emissions, and fuel consumption. You can switch to the automatic deceleration on the monitor.



Flow Control

You can adjust the maximum hydraulic flow to the attachment in 15 scales through an easy monitor operation which allows the attachment to be constantly used in best condition for increased work efficiency.



Continuous Flow

Easily turn on continuous flow using the monitor. You can also operate the attachment continuously with the sliding wheel switch on/off, to help reduce operator fatigue.

2-Way Control Pattern Quick Changer is Standard (except for pipe model)

2-way control pattern quick changer comes as standard to change between two operational patterns with a simple press of a button on the monitor.

Optional 4-way control pattern quick changer uses a valve to change the operational pattern.



Initial Display



Main Menu



Control Mode



Maintenance Screen



Warnings Display

Equipment to Meet Your Needs

Performance and Durability



Bolt-on Cutting Edge Blade

The Cat E2 Mini Excavators come equipped with a range of standard features to help you get the job done. A Bolt-on Cutting Edge Blade comes standard to handle from excavation and loading to leveling, landscaping and backfilling trenches. This particular shape of blade is adopted for easier landscaping with higher productivity. Drive select switch is installed on top of the blade lever for greater controllability.



Upward Exhaust*



Drive Select Switch



Auto Exit Light



Enhanced Boom Cylinder Guard

**Not applicable for the 303.5E2 CR.*

Versatility

Range of Options to Fit Your Job Requirements

Shovel Crane

- Net Capacity: 0.99 ton
- Overload control system
- Level
- Fully retractable hooked hoisting attachment
- Rear revolving light
- Two decimal shovel crane display



Hydraulic Breaker (Hammer)

Automatic shut-off protects the hammer from blank firing, a key contributor to hammer wear. Internal stresses are reduced providing more productive hours of work. The hammer is protected, regardless of the operator's skill level.

- **H45Es** – 303.5E2 CR
- **H55Es** – 303.5E2 CR, 304E2 CR, 305E2 CR, 305.5E2 CR
- **H65Es** – 305E2 CR, 305.5E2 CR



Rearview Camera



4-way Control Pattern Changer



Front Guard

Serviceability

Easy Service Access



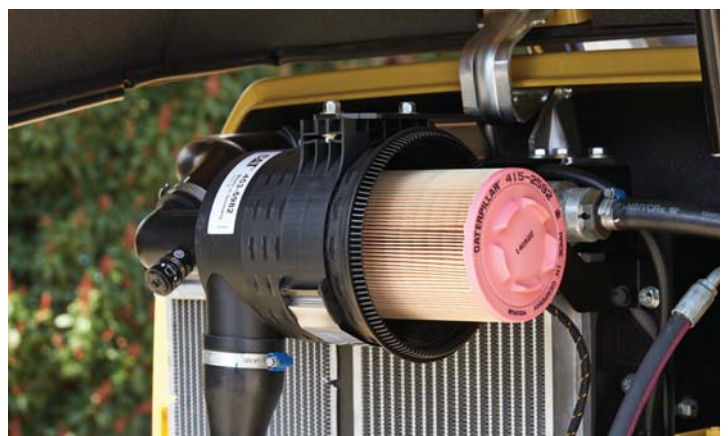
1) Side cover provides wider opening



2) Engine service door to the concentrated service points

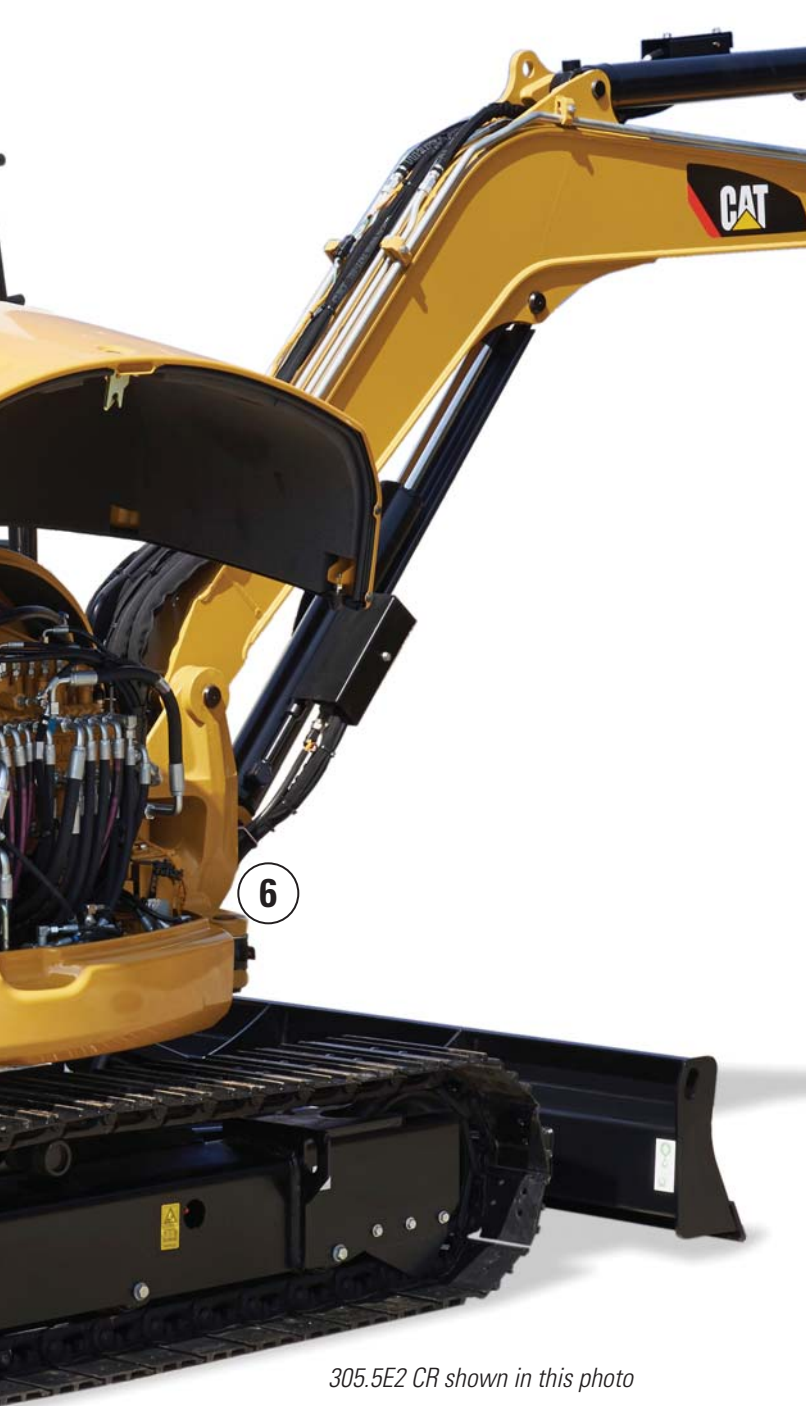


3) Easy radiator clean-up



4) Air filter to improve engine reliability





305.5E2 CR shown in this photo

Easy Service Access

Extended service intervals, durable components, and ease of service access points decrease your owning and operating costs. Service features include:

- Simple Daily Check-up on the Monitor
- S-O-SSM Sampling Valve
- ORFS Joints
- Easy Identification of Lubrication Points
- AMP Seal Connectors
- Cat Maintenance-free Battery

Maintenance Intervals

500 Hours	Engine Oil Change
	Engine Oil Filter Change
	Fuel Filter Change
1000 Hours	Final Drive Oil Change
2000 Hours	Hydraulic Oil Change
	Hydraulic Oil Filter Change



5) Water separator shaped fuel filter



6) Concentrated grease filling ports

303.5E2 CR, 304E2 CR, 305E2 CR, 305.5E2 CR Specifications

303.5E2 CR Engine

Model	Cat C1.7 Diesel Engine
Type	4 cycles water-cooled inline 3-cylinder
Displacement	1.7 L
Rated Power	17.7 kW
Rated Speed	2,200 min ⁻¹ (rpm)

303.5E2 CR Weights

Machine Mass – Canopy Standard Specification	
Rubber Belt	3605 kg
Double Grouser Shoes	3740 kg
Machine Mass – Cab Standard Specification	
Rubber Belt	3790 kg
Double Grouser Shoes	3925 kg
Base Machinery Mass – Canopy Standard Specification	
Rubber Belt	2740 kg
Double Grouser Shoes	2875 kg
Base Machinery Mass – Cab Standard Specification	
Rubber Belt	2925 kg
Double Grouser Shoes	3060 kg
303.5E2 CR Buckets	
Standard Bucket Capacity	0.11 m ³
Standard Bucket Width	600 mm

303.5E2 CR Hydraulic System

Pump Type	Variable Displacement Piston Pump × 1
Relief Valve Set Pressure	24.5 MPa (250 kgf/cm ²)
Digging Force	
Arm	18.5 kN (1890 kgf)
Bucket	31.0 kN (3160 kgf)
Swing Speed	9.0 rpm

303.5E2 CR Travel System

Travel Speed (High/Low)	4.4 km/h/2.6 km/h
Gradeability	25 degrees

303.5E2 CR Undercarriage

Standard Shoe Width	300 mm
Ground Pressure	31.3 kPa (0.32 kgf/cm ²)

303.5E2 CR Service Refill Capacities

Fuel Tank	46 L
Hydraulic Oil	65 L
Engine Oil Pan	7.0 L
Cooling Water	6.2 L

303.5E2 CR, 304E2 CR, 305E2 CR, 305.5E2 CR Specifications

304E2 CR Engine

Model	Cat C2.4 Diesel Engine
Type	4 cycles water-cooled inline 4-cylinder
Displacement	2.4 L
Rated Power	29.8 kW
Rated Speed	2,200 min ⁻¹ (rpm)

304E2 CR Weights

Machine Mass – Canopy Standard Specification	
Rubber Belt	3865 kg
Double Grouser Shoes	4030 kg
Machine Mass – Cab Standard Specification	
Rubber Belt	4045 kg
Double Grouser Shoes	4210 kg
Base Machinery Mass – Canopy Standard Specification	
Rubber Belt	2940 kg
Double Grouser Shoes	3105 kg
Base Machinery Mass – Cab Standard Specification	
Rubber Belt	3120 kg
Double Grouser Shoes	3285 kg
304E2 CR Buckets	
Standard Bucket Capacity	0.13 m ³
Standard Bucket Width	650 mm

304E2 CR Hydraulic System

Pump Type	Variable Displacement Piston Pump × 1
Relief Valve Set Pressure	24.5 MPa (250 kgf/cm ²)
Digging Force	
Arm	21.1 kN (2160 kgf)
Bucket	35.6 kN (3630 kgf)
Swing Speed	9.0 rpm

304E2 CR Travel System

Travel Speed (High/Low)	4.6 km/h/2.7 km/h
Gradeability	25 degrees

304E2 CR Undercarriage

Standard Shoe Width	350 mm
Ground Pressure	28.7 kPa (0.29 kgf/cm ²)

304E2 CR Service Refill Capacities

Fuel Tank	46 L
Hydraulic Oil	65 L
Engine Oil Pan	9.5 L
Cooling Water	7.2 L

303.5E2 CR, 304E2 CR, 305E2 CR, 305.5E2 CR Specifications

305E2 CR Engine

Model	Cat C2.4 Diesel Engine
Type	4 cycles water-cooled inline 4-cylinder
Displacement	2.4 L
Rated Power	30.0 kW
Rated Speed	2,200 min ⁻¹ (rpm)

305E2 CR Weights

Machine Mass – Canopy Standard Specification	
Rubber Belt	4755 kg
Triple Grouser Shoes	4905 kg
Machine Mass – Cab Standard Specification	
Rubber Belt	4930 kg
Triple Grouser Shoes	5080 kg
Base Machinery Mass – Canopy Standard Specification	
Rubber Belt	3500 kg
Triple Grouser Shoes	3650 kg
Base Machinery Mass – Cab Standard Specification	
Rubber Belt	3675 kg
Triple Grouser Shoes	3825 kg

305E2 CR Buckets

Standard Bucket Capacity	0.16 m ³
Standard Bucket Width	650 mm

305E2 CR Hydraulic System

Pump Type	Variable Displacement Piston Pump × 1
Relief Valve Set Pressure	24.5 MPa (250 kgf/cm ²)
Digging Force	
Arm	23.3 kN (2380 kgf)
Bucket	38.6 kN (3940 kgf)
Swing Speed	9.2 rpm

305E2 CR Travel System

Travel Speed (High/Low)	4.5 km/h/2.5 km/h
Gradeability	25 degrees

305E2 CR Undercarriage

Standard Shoe Width	400 mm
Ground Pressure	26.3 kPa (0.27 kgf/cm ²)

305E2 CR Service Refill Capacities

Fuel Tank	63 L
Hydraulic Oil	78 L
Engine Oil Pan	9.5 L
Cooling Water	10.5 L

303.5E2 CR, 304E2 CR, 305E2 CR, 305.5E2 CR Specifications

305.5E2 CR Engine

Model	Cat C2.4 Diesel Engine
Type	4 cycles water-cooled inline 4-cylinder
Displacement	2.4 L
Rated Power	32.9 kW
Rated Speed	2,400 min ⁻¹ (rpm)

305.5E2 CR Weights

Machine Mass – Canopy Standard Specification	
Rubber Belt	4995 kg
Triple Grouser Shoes	5145 kg
Machine Mass – Cab Standard Specification	
Rubber Belt	5170 kg
Triple Grouser Shoes	5320 kg
Base Machinery Mass – Canopy Standard Specification	
Rubber Belt	3700 kg
Triple Grouser Shoes	3850 kg
Base Machinery Mass – Cab Standard Specification	
Rubber Belt	3875 kg
Triple Grouser Shoes	4025 kg
305.5E2 CR Buckets	
Standard Bucket Capacity	0.16 m ³
Standard Bucket Width	650 mm

305.5E2 CR Hydraulic System

Pump Type	Variable Displacement Piston Pump × 1
Relief Valve Set Pressure	24.5 MPa (250 kgf/cm ²)
Digging Force	
Arm	27.5 kN (2800 kgf)
Bucket	43.9 kN (4480 kgf)
Swing Speed	9.2 rpm

305.5E2 CR Travel System

Travel Speed (High/Low)	4.6 km/h/2.6 km/h
Gradeability	25 degrees

305.5E2 CR Undercarriage

Standard Shoe Width	400 mm
Ground Pressure	27.7 kPa (0.28 kgf/cm ²)

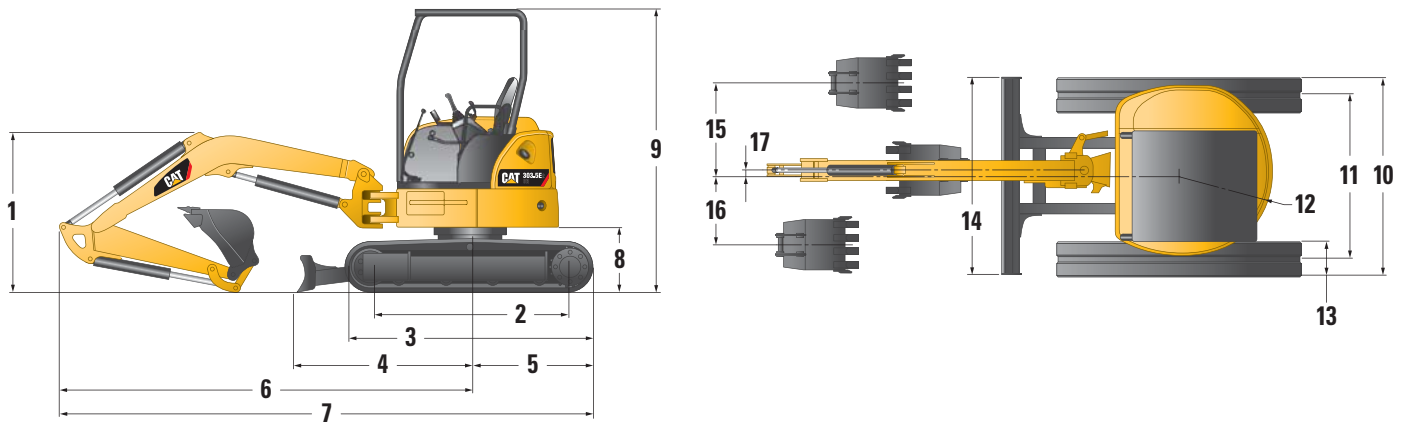
305.5E2 CR Service Refill Capacities

Fuel Tank	63 L
Hydraulic Oil	78 L
Engine Oil Pan	9.5 L
Cooling Water	10.5 L

303.5E2 CR, 304E2 CR, 305E2 CR, 305.5E2 CR Specifications

Dimensions

All dimensions are approximate.

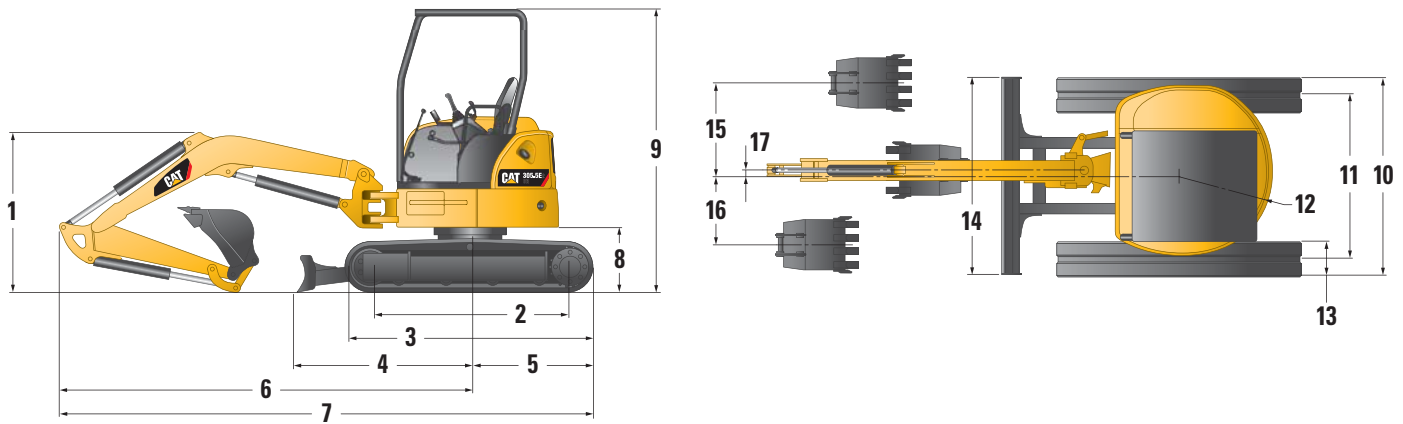


Model	303.5E2 CR	304E2 CR
1 Boom Height In-Transit Position	1420 mm	1480 mm
2 Tumbler Center Length	1760 mm	1760 mm
3 Undercarriage Length	2220 mm	2220 mm
4 Center of Swing – Tip of Blade	1720 mm	1720 mm
5 Center of Swing – Rear End of Crawler	1110 mm	1110 mm
6 Center of Swing – Front End (Shipping)	3620 mm	3710 mm
7 In-Transit Length	4730 mm	4820 mm
8 Swing Bearing Height	570 mm	570 mm
9 In-Transit Overall Height	2500 mm	2500 mm
10 In-Transit Width	1780 mm	1950 mm
11 Track Center Length	1480 mm	1600 mm
12 Rear Swing Radius	890 mm	975 mm
13 Undercarriage – Standard Shoe Width	300 mm	350 mm
14 Blade Width	1780 mm	1950 mm
15 Boom Swing Right	825 mm	825 mm
16 Boom Swing Left	610 mm	610 mm
17 Center of Swing – Center of Front	60 mm	60 mm
Minimum Height from Ground	315 mm	310 mm

303.5E2 CR, 304E2 CR, 305E2 CR, 305.5E2 CR Specifications

Dimensions

All dimensions are approximate.

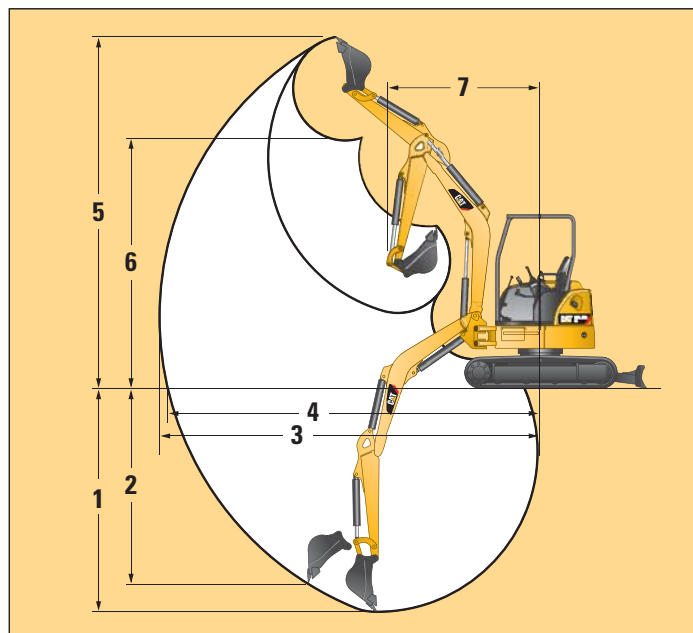


Model	305E2 CR	305.5E2 CR
1 Boom Height In-Transit Position	1720 mm	1670 mm
2 Tumbler Center Length	2070 mm	2070 mm
3 Undercarriage Length	2580 mm	2580 mm
4 Center of Swing – Tip of Blade	1910 mm	1910 mm
5 Center of Swing – Rear End of Crawler	1290 mm	1290 mm
6 Center of Swing – Front End (Shipping)	4160 mm	4380 mm
7 In-Transit Length	5450 mm	5670 mm
8 Swing Bearing Height	620 mm	620 mm
9 In-Transit Overall Height	2550 mm	2550 mm
10 In-Transit Width	1980 mm	1980 mm
11 Track Center Length	1580 mm	1580 mm
12 Rear Swing Radius	990 mm	1010 mm
13 Undercarriage – Standard Shoe Width	400 mm	400 mm
14 Blade Width	1980 mm	1980 mm
15 Boom Swing Right	865 mm	865 mm
16 Boom Swing Left	615 mm	615 mm
17 Center of Swing – Center of Front	80 mm	80 mm
Minimum Height from Ground	340 mm	340 mm

303.5E2 CR, 304E2 CR, 305E2 CR, 305.5E2 CR Specifications

Working Ranges

All dimensions are approximate.

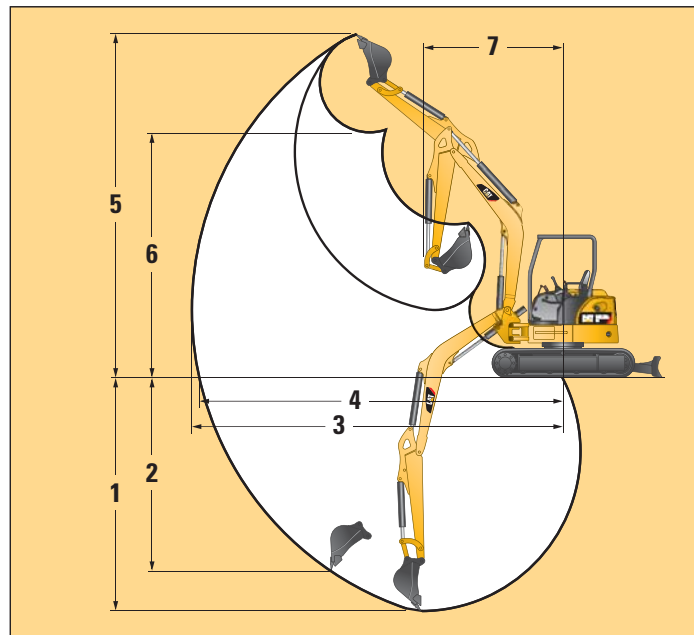


Model	303.5E2 CR		304E2 CR	
	Reinforced Standard Arm	Reinforced Long Arm	Reinforced Standard Arm	Reinforced Long Arm
Arm Length	1260 mm	1560 mm	1320 mm	1620 mm
1 Maximum Digging Depth	2930 mm	3230 mm	3180 mm	3470 mm
2 Maximum Vertical (Wall) Digging Depth	2620 mm	2790 mm	2730 mm	2910 mm
3 Maximum Digging Reach	5250 mm	5490 mm	5400 mm	5640 mm
4 Maximum Digging Reach at Ground Level	5120 mm	5370 mm	5270 mm	5520 mm
5 Maximum Digging Height	4980 mm	5090 mm	5040 mm	5130 mm
6 Maximum Dump (Loading) Height	3470 mm	3590 mm	3540 mm	3650 mm
7 Minimum Front Swing Radius	2060 mm	2180 mm	2120 mm	2220 mm
Maximum Offset Volume				
Right	825 mm		825 mm	
Left	610 mm		610 mm	
Boom Swing Angle				
Right	50 degrees		50 degrees	
Left	80 degrees		80 degrees	
Maximum Truck Outer Side Digging Width				
Right	235 mm		175 mm	
Left	20 mm		—	
Blade				
Width	1780 mm		1950 mm	
Height	365 mm		365 mm	
Maximum Upward	390 mm		365 mm	
Maximum Downward	560 mm		570 mm	

303.5E2 CR, 304E2 CR, 305E2 CR, 305.5E2 CR Specifications

Working Ranges

All dimensions are approximate.



Model	305E2 CR		305.5E2 CR	
	Reinforced Standard Arm	Reinforced Long Arm	Reinforced Standard Arm	Reinforced Long Arm
Arm				
Arm Length	1480 mm	1880 mm	1580 mm	1980 mm
1 Maximum Digging Depth	3530 mm	3930 mm	3810 mm	4210 mm
2 Maximum Vertical (Wall) Digging Depth	2860 mm	3270 mm	3110 mm	3490 mm
3 Maximum Digging Reach	6040 mm	6420 mm	6330 mm	6710 mm
4 Maximum Digging Reach at Ground Level	5890 mm	6280 mm	6190 mm	6570 mm
5 Maximum Digging Height	5690 mm	5960 mm	5950 mm	6200 mm
6 Maximum Dump (Loading) Height	3920 mm	4190 mm	4180 mm	4430 mm
7 Minimum Front Swing Radius	2350 mm	2580 mm	2390 mm	2510 mm
Maximum Offset Volume				
Right	865 mm		865 mm	
Left	615 mm		615 mm	
Boom Swing Angle				
Right	50 degrees		50 degrees	
Left	80 degrees		80 degrees	
Maximum Truck Outer Side Digging Width				
Right	200 mm		200 mm	
Left	—		—	
Blade				
Width	1980 mm		1980 mm	
Height	415 mm		415 mm	
Maximum Upward	395 mm		395 mm	
Maximum Downward	650 mm		650 mm	

303.5E2 CR, 304E2 CR, 305E2 CR, 305.5E2 CR Specifications

Bucket Variation

Bucket Capacity	New JIS Indication	0.09 m ³	0.11 m ³	0.13 m ³	0.14 m ³	0.14 m ³	0.16 m ³
	Old JIS Indication	0.08 m ³	0.10 m ³	0.11 m ³	0.12 m ³	0.12 m ³	0.14 m ³
Bucket Width	Installed with Side Cutter	500 mm	600 mm	650 mm	700 mm	600 mm	650 mm
	Without Side Cutter	440 mm	540 mm	590 mm	640 mm	520 mm	570 mm
Number of Teeth		4	4	4	4	4	4
303.5E2 CR		○	⊙	○	○	—	—
304E2 CR		○	○	⊙	○	—	—
305E2 CR		—	—	—	—	○	⊙
305.5E2 CR		—	—	—	—	○	⊙

⊙ Standard Bucket

○ Selectable

— Not Available

303.5E2 CR, 304E2 CR, 305E2 CR, 305.5E2 CR Specifications

Packages – 303.5E2 CR/304E2 CR

		Canopy Standard Specification	Cab Specification	Auxiliary Line Specification	Shovel Crane Specification
Canopy	ROPS Canopy (4 Post)	●	—	●	●
	Soft Canopy (2 Post)	○	—	○	○
Cab	ROPS Cab (Heater)	—	●	○	○
	ROPS Cab (Air Conditioner*)	—	○	○	○
Undercarriage	Rubber Belt	●	●	○	○
	Double Grouser Shoes	○	○	●	●
Arm	303.5E2 CR	1.26 m Reinforced Standard Arm	●	●	●
		1.56 m Reinforced Long Arm	○	○	○
	304E2 CR	1.32 m Reinforced Standard Arm	●	●	●
		1.62 m Reinforced Long Arm	○	○	○
Standard Bucket	303.5E2 CR	0.11 m ³ (600 mm Width)	●	●	●
	304E2 CR	0.13 m ³ (650 mm Width)	●	●	●
Line	Auxiliary Line		○	○	●
	Control	Sliding Wheel Switch	○	○	●
		Left Pedal (Pedal/Sliding Wheel Switch are Switchable)	○	○	○
Other Equipment	Front Guard	For ROPS Canopy	○	—	○
		For ROPS Cab	—	○	○
	Enhanced Boom Cylinder Guard		●	●	●
	Product Link™ (PL240)		●	●	●
	Product Link (PL641)		○	○	○
	Disconnect Switch		●	●	●
	Automatic Deceleration (AEC)		●	●	●
	MSS (Machine Security System)		○	○	○
	Double Element Air Filter		●	●	●
	AM/FM Radio (for Cab)		—	○	○
	2-way Control Pattern Quick Changer		●	●	○
	4-way Control Pattern Quick Changer		○	○	●
	Left Mirror (for Cab)		—	●	○
	Rear Mirror** (for Cab)		—	●	○
	Rearview Camera** (for Cab)		—	○	○
	Drive Pedal		○	●	○
Tool Kit		●	●	●	

Package:

● Standard Equipment

○ Selectable

— Not Available

*Machine with air conditioner installed is MLIT designated low-noise construction machinery.

**Impossible to install at the same time.

303.5E2 CR, 304E2 CR, 305E2 CR, 305.5E2 CR Specifications

Packages – 305E2 CR/305.5E2 CR

		Canopy Standard Specification	Cab Specification	Auxiliary Line Specification	Shovel Crane Specification	
Canopy	ROPS Canopy (4 Post)	●	—	●	●	
	Soft Canopy (2 Post)	○	—	○	○	
Cab	ROPS Cab (Heater)	—	●	○	○	
	ROPS Cab (Air Conditioner*)	—	○	○	○	
Undercarriage	Rubber Belt	●	●	○	○	
	Triple Grouser Shoes	○	○	●	●	
Arm	305E2 CR	1.48 m Reinforced Standard Arm	●	●	●	
		1.88 m Reinforced Long Arm	○	○	○	
	305.5E2 CR	1.58 m Reinforced Standard Arm	●	●	●	
		1.98 m Reinforced Long Arm	○	○	○	
Standard Bucket	0.16 m ³ (650 mm Width)	●	●	●	●	
Line	Auxiliary Line		○	○	●	○
	Control	Sliding Wheel Switch	○	○	●	○
		Left Pedal (Pedal/Sliding Wheel Switch are Switchable)	○	○	○	○
Other Equipment	Extra Counterweight (Additional)		○	○	○	○
	Front Guard	For ROPS Canopy	○	—	○	○
		For ROPS Cab	—	○	○	○
	Enhanced Boom Cylinder Guard		●	●	●	●
	Product Link (PL240)		●	●	●	●
	Product Link (PL641)		○	○	○	○
	Disconnect Switch		●	●	●	●
	Automatic Deceleration (AEC)		●	●	●	●
	MSS (Machine Security System)		○	○	○	○
	Double Element Air Filter		●	●	●	●
	AM/FM Radio (for Cab)		—	○	○	○
	2-way Control Pattern Quick Changer		●	●	○	●
	4-way Control Pattern Quick Changer		○	○	●	○
	Left Mirror (for Cab)		—	●	○	○
	Rear Mirror** (for Cab)		—	●	○	○
	Rearview Camera** (for Cab)		—	○	○	○
Drive Pedal		○	●	○	○	
Tool Kit		●	●	●	●	

Package:

● Standard Equipment

○ Selectable

— Not Available

*Machine with air conditioner installed is MLIT designated low-noise construction machinery.

**Impossible to install at the same time.

303.5E2 CR, 304E2 CR, 305E2 CR, 305.5E2 CR Standard Equipment

Standard Equipment

Standard equipment may vary. Consult your Cat dealer for details.

- Automatic Deceleration (AEC)
- Accel Dial
- Automatic Two Speed Travel
- Auto Engine Shut-Off
- Swing Park Brake
- Hydraulic Lock Lever
- Engine Neutral Start System
- 2-way Control Pattern Quick Changer
- Product Link (PL240)
- Disconnect Switch
- ROPS Canopy (4 Post)
- Color Monitor
- Reclining Seat
- Retractable Seat Belt
- Adjustable Wrist Rests
- Floor Mat
- Rubber Belt
- Blade with Float Function
- Reinforced Standard Arm
 - 303.5E2 CR: 1.26 m
 - 304E2 CR: 1.32 m
 - 305E2 CR: 1.48 m
 - 305.5E2 CR: 1.58 m
- Bucket
 - 303.5E2 CR: 0.11 m³ (600 mm Width)
 - 304E2 CR: 0.13 m³ (650 mm Width)
 - 305E2 CR: 0.16 m³ (650 mm Width)
 - 305.5E2 CR: 0.16 m³ (650 mm Width)
- Enhanced Boom Cylinder Guard
- Double Element Air Filter
- Water Separator Shaped Fuel Filter
- Cat Maintenance-free Battery
- Tool Kit

303.5E2 CR, 304E2 CR, 305E2 CR, 305.5E2 CR Optional Equipment

Optional Equipment

Optional equipment may vary. Consult your Cat dealer for details.

- Soft Canopy (2 Post)
- ROPS Cab
- Heater*
- Air Conditioner*
- Auxiliary Line
 - Control, Sliding Wheel Switch
 - Control, Left Pedal (Pedal/Sliding Wheel Switch are Switchable)
- 4-way Control Pattern Quick Changer
- MSS (Machine Security System)
- Shovel Crane
- Front Guard
- Rearview Camera*
- 32W Hydraulic Oil
- Double Grouser Shoe
 - 303.5E2 CR/304E2 CR
- Triple Grouser Shoe
 - 305E2 CR/305.5E2 CR
- Suspension Seat
- Drive Pedal
- Reinforced Long Arm
 - 303.5E2 CR: 1.56 m
 - 304E2 CR: 1.62 m
 - 305E2 CR: 1.88 m
 - 305.5E2 CR: 1.98 m
- Product Link (PL641)
- Hydraulic Quick Coupler (for Reinforced Long Arm)
- Lines for Coupler (for Reinforced Long Arm)
- AM/FM Radio*
- Left Mirror*
- Rear Mirror*
- Extra Counterweight (165 kg)
 - 305E2 CR/305.5E2 CR

*For Cab.

For more complete information on Cat products, dealer services, and industry solutions, visit us on the web at www.cat.com

© 2016 Caterpillar
All rights reserved

Materials and specifications are subject to change without notice. Featured machines in photos may include additional equipment. See your Cat dealer for available options.

CAT, CATERPILLAR, SAFETY.CAT.COM, their respective logos, "Caterpillar Yellow" and the "Power Edge" trade dress, as well as corporate and product identity used herein, are trademarks of Caterpillar and may not be used without permission.

Based on the Labor, Safety and Health Laws in Japan, employer of small construction equipment are required to provide specific training for all operators on machines with ship weight less than 3 metric ton. For machines greater than 3 metric ton, operator needs to obtain operator license certification from a Government approved registered training school.

AEHQ7491-04 (10-2016)
Replaces AEHQ7491-03
(Japan)

