



Powering your every need...

Construction

Residential

Retail

Telecommunications

6.8 – 25 KVA RANGE

Performance | Durability | Serviceability



The 6.8 – 25 kVA range of generator sets is designed to power your every need.

With an enhanced choice of power nodes, this range is engineered for optimum performance in diverse applications including construction, residential, retail and telecommunications. The contemporary design of the polymer enclosure option redefines durability in the marketplace and further enhances this range alongside the more traditional metal enclosure.

For a life without interruptions, trust FG Wilson.

Open Set Range

A series of key enhancements have been introduced to the 6.8 – 25 kVA range. Most notable is the common sense component arrangement, facilitating greater operator access and serviceability. This range employs the power and efficiency delivered by world-renowned Perkins engines.



Single side access is provided for fuel filter, oil filter and coolant, ensuring minimal maintenance time and maximum generator set operation. The fuel fill and gauge are positioned together on the opposite side of the fuel tank for easy fill and monitoring.



Robust electrical components including relays, AVR and MCB's are grouped and centralised within the control panel. They are easily accessed through a lockable side hinged door. Cable access is gained directly underneath the control panel for ease of installation.



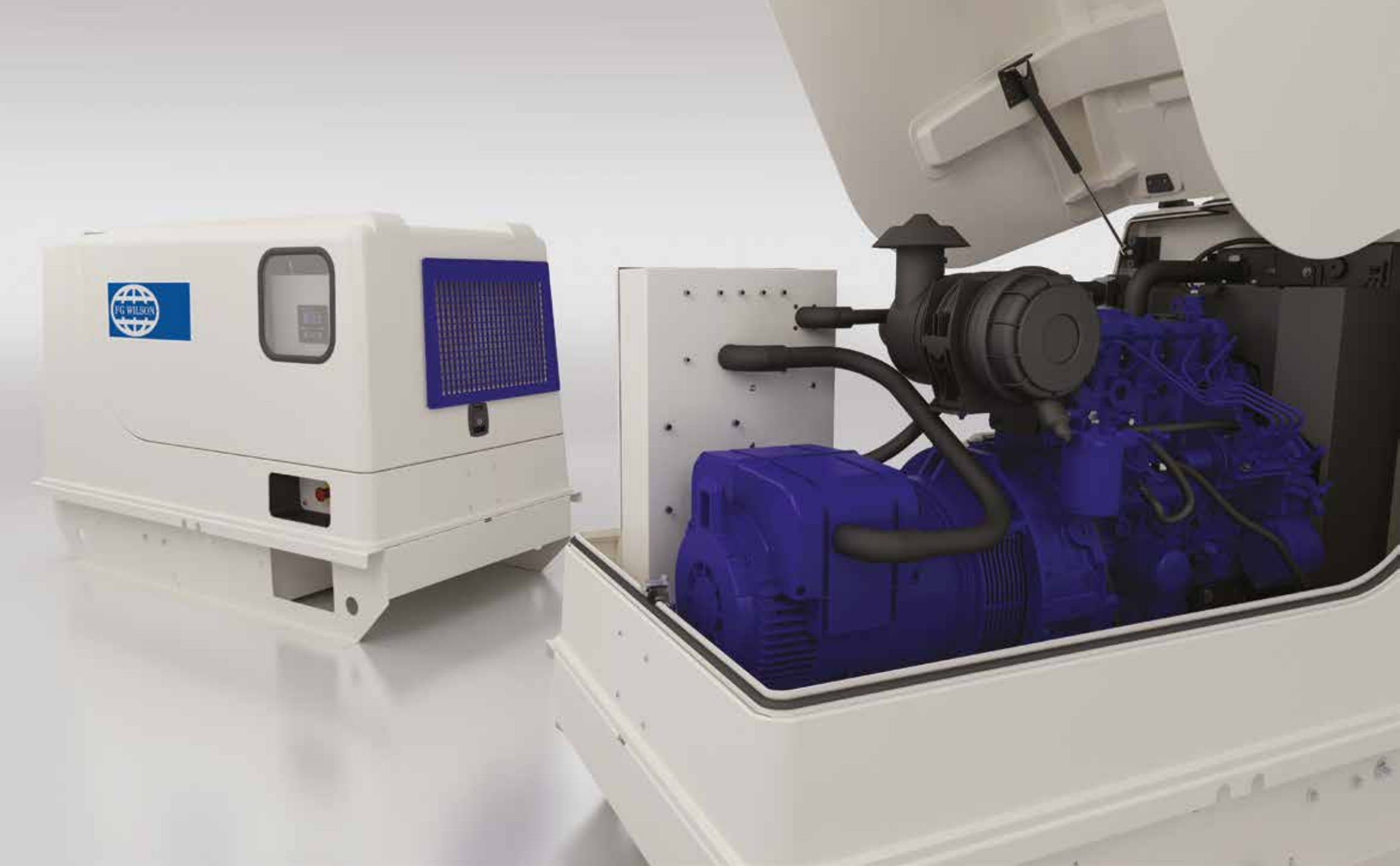
The baseframe provides drag points as standard, reducing the risk of damage during transportation and installation. The fuel tank is designed for 8 hours running at full load in prime applications.



The battery is positioned directly underneath the radiator for convenient accessibility. The coolant level can be easily viewed or topped up via the access point at the top of the radiator.



The choice of control panels and options, ensure this range offers a robust, reliable product to power your every need. Customer choice is enhanced with a comprehensive range of options available across all power nodes, including a 1,000 hours extended service interval.



Providing virtually a 360° view of the generator set when opened, our innovative polymer enclosure provides superior durability and maintenance access. The corrosion proof, robust enclosure material has unrivalled impact resistance, as demonstrated through its extensive use in the construction and mining industries as well as being heat resistant from -40°C to $+120^{\circ}\text{C}$. The polymer enclosure is designed to be subtle and stylish, yet able to withstand the test of time in any application.

Polymer Enclosed Range

When it comes to innovation, our polymer enclosure redefines durability. Constructed from one of the most robust materials, proven to withstand the harshest mining environments, this market leading enclosure is not only robust but is designed for improved access and serviceability.



With a modern design, the two-component enclosure structure (hood and base), encompassing a sloped roof for optimal water run off, delivers enhanced water ingress protection. Raised access caps featuring compression seals, provide access points to the radiator fill and single point lift, while continuing to provide excellent protection against water ingress.



The modular air handling units offer optimum corrosion resistance, whilst adding to the enclosure's strong, stylish design. The baseframe featuring drag points, extends beyond the enclosure, further protecting against damage during transportation and installation.



The robust locking mechanism protects your investment against vandalism and theft. Gas struts lift and hold the hood of the enclosure during any inspection or maintenance service, providing superior access to the top, sides and rear of your generator set.



Cable access is through the side entry plate or from directly underneath the control panel. The emergency stop button is also conveniently located below the control panel on the outside of the enclosure. Generator set running conditions can be easily monitored via the large viewing window.

Metal Enclosed Range

Our metal enclosure option, proven in the marketplace for many years, has been further enhanced to continue to provide the best service and maintenance access possible, whilst maintaining its original design.



The robust single piece roof incorporates a flush mounted access cap with compression seal, allowing access to the single point lift, whilst providing excellent protection against water ingress. The exhaust silencing system is housed inside the enclosure, delivering market leading noise levels while ensuring operator safety.



The metal enclosure is manufactured from high grade steel, protected by powder coat paint, to provide a durable, sturdy enclosure.



The baseframe featuring drag points for ease of installation and handling, extends beyond the enclosure, further protecting against damage during transportation and installation.



The emergency stop button is conveniently located below the control panel on the outside of the enclosure. Generator set running conditions can be easily monitored via the large viewing window. For added security, all doors are fitted with lockable latches.

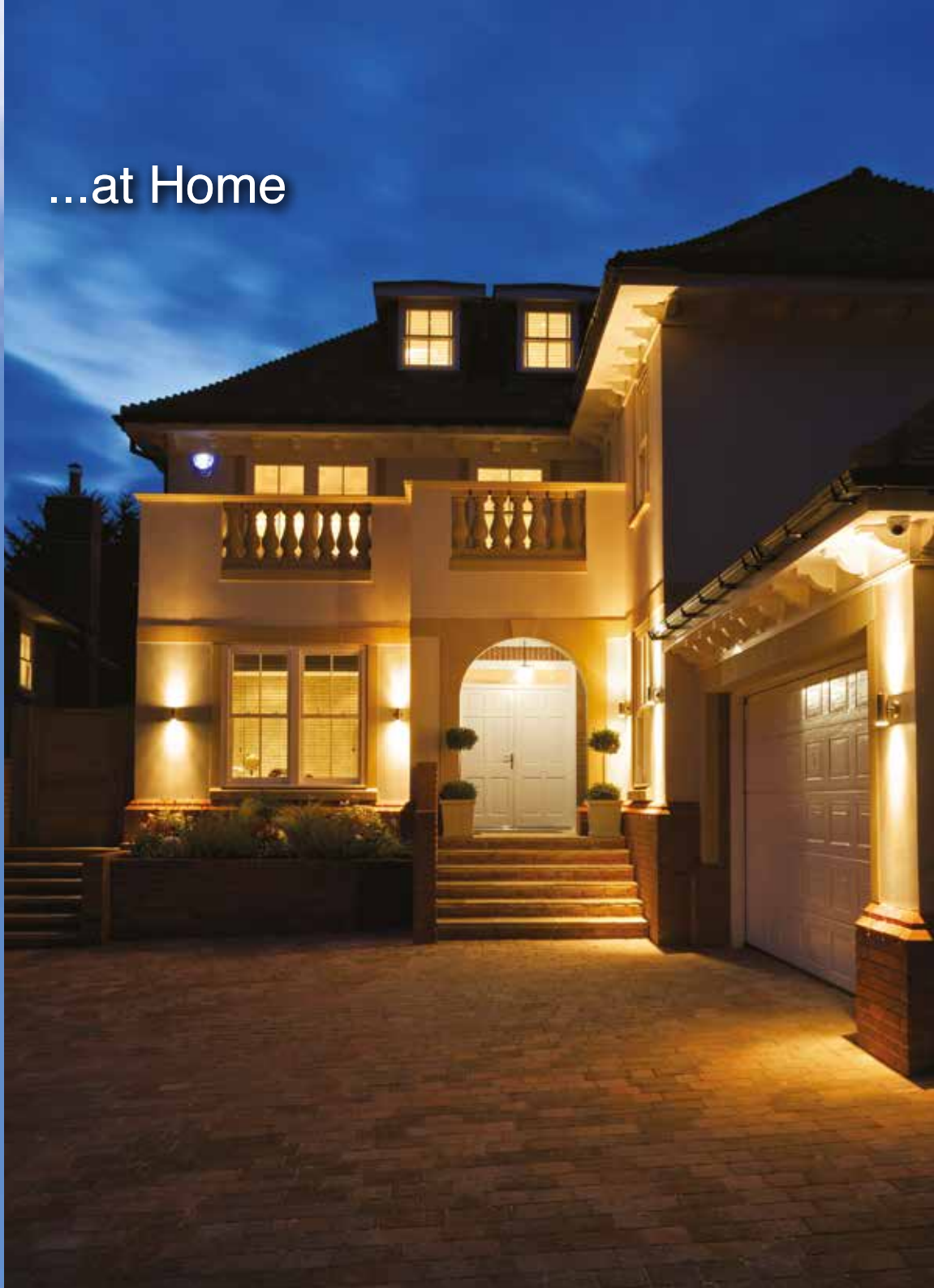


This range of enclosures offer excellent service and maintenance access. The control panel tower mounted on the side of the generator set is accessed via the full height door, allowing access to the control panel including all components and wiring. Side hinged doors open to 180° and can be lifted off when opened at 90°. Combined with removable front and rear access panels, the enclosure provides optimal access for all servicing and maintenance tasks.

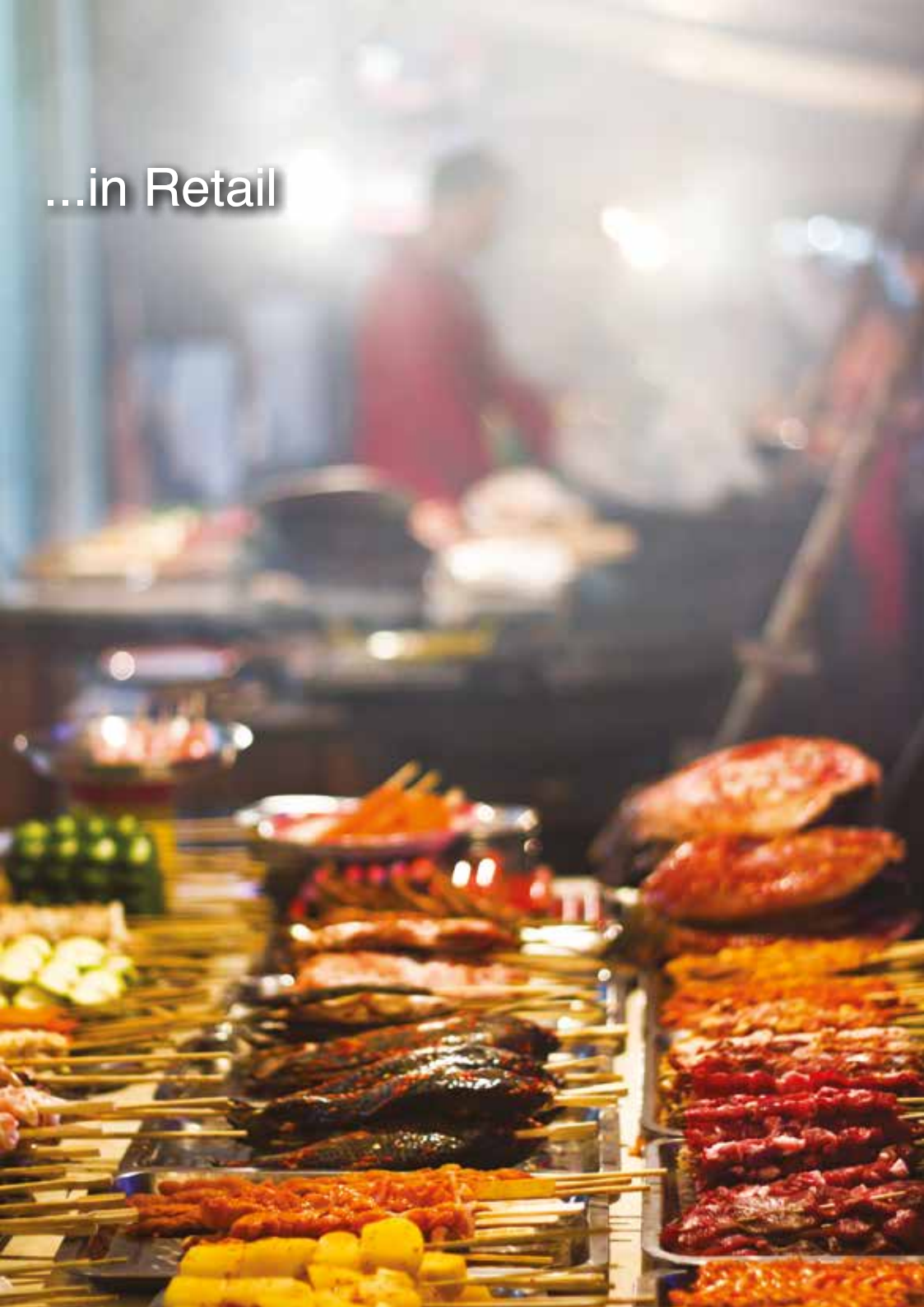
Powering your every need...
...in Telecommunications



...at Home



...in Retail



...in Construction



FG Wilson DCP-10, DCP-20

A suite of fully digital control panels accompany the 6.8 – 25 kVA range. Provided as standard, the FG Wilson DCP-10 digital control panel, provides simple, intuitive control of your generator set. Key information including diagnostics, is displayed via the LCD screen and LED's using universally recognised symbols.



DCP-10

- Configuration of parameters via front panel push buttons or by PC via mini USB interface
- True RMS Voltage Sensing
- Engine & AC monitoring
- Run / Auto keys with LED indicators
- Under / Over voltage protection



DCP-20

- Configuration of parameters via front panel push buttons or communication software
- 128x64 graphic LCD screen
- RS485, RS232 or USB port for remote communication
- AC Power metering

PowerWizard 1.1, 1.1+, 2.1

The PowerWizard digital control panels combine straightforward menu navigation with advanced metering and protection technology. They allow easy generator set monitoring and control with an enhanced range of features and options. Suitable for use in mains failure applications in conjunction with automatic transfer panels, they provide diagnostic information as required.



PowerWizard 1.1 / 1.1+

- Active voltage sender functionality
- Shortcut key to view faults
- Dedicated key to reset all faults and main menu short cut key
- Spare input / output analogue and digital channels
- Under / Over voltage protection as standard (1.1+ only)



PowerWizard 2.1

- Additional monitoring, options and protection
- AC power metering
- Data link for long distance annunciator
- Reverse power protection provided as standard
- Remote monitoring via MODBUS

Technical Data

6.8 – 25 kVA MODELS											
Model	Engine	Alternator	50 Hz				60 Hz				
			Prime		Standby		Prime			Standby	
			kVA	kW	kVA	kW	kVA	kW	kVA	kW	
P7.5-4S	403D-11G	LLB1114D	6.8	6.8	7.5	7.5	8.0	8.0	8.8	8.8	
P9.5-4	403D-11G	LL1114B/D	8.5	6.8	9.5	7.6	10.0	8.0	11.0	8.8	
P11-6S	403D-15G	LLB1114F	10.0	10.0	11.0	11.0	12.0	12.0	13.0	13.0	
P13.5-6	403D-15G	LL1114D	12.5	10.0	13.5	10.8	15.0	12.0	16.5	13.2	
P14-6S	404D-22G1	LLB1114L	13.0	13.0	14.0	14.0	16.8	16.8	17.0	17.0	
P16.5-6S	404D-22G	LLB1114M	15.0	15.0	16.5	16.5	17.6	17.6	19.4	19.4	
P18-6	404D-22G1	LL1114H	16.5	13.2	18.0	14.4	20.0	16.0	22.0	17.6	
P22-6	404D-22G	LL1114M	20.0	16.0	22.0	17.6	22.5	18.0	25.0	20.0	

Standard and Optional Features

6.8 – 25 kVA Range

STANDARD FEATURES

Perkins 400 series electric power engine

500 hours service interval

EU Stage IIIA emissions compliant

Engine mounted battery charging alternator

Single element air filter

Low oil pressure protection

High water temperature protection

Alternator IP23 protection

R220 AVR / R221 AVR (single phase 60Hz)

FG Wilson DCP-10 autostart control panel

Set mounted 3 Pole circuit breaker and power loom

Robust steel constructed baseframe

8 hours fuel tank

Containment drip tray on fuel tank (enclosed sets only)

Baseframe drag points

Side rail mounted fuel water separator

BSP fuel sockets for remote fuel tank connection

Coolant drain piped to edge of baseframe

Lube oil drain

Radiator fan and charging alternator guards

50% antifreeze (protection to -36°C)

OPTIONAL FEATURES

Sound attenuated polymer enclosure

Sound attenuated metal enclosure

FG Wilson DCP-20 autostart control panel

PowerWizard 1.1 control panel

PowerWizard 1.1+ control panel

PowerWizard 2.1 control panel

Extended capacity bunded fuel tank

Skidbase

Industrial silencer

Overhead mounting kit for silencer

Coolant heater

Lead-acid battery (dry)

Static battery charger

Static battery charger with boost control

Volt free contacts for common alarm

Fuel transfer circuit

Fuel level sender and display

Fuel level switch

Low fuel level alarm

4 Pole circuit breaker

Close remote monitoring and control

Distant remote monitoring and control

Automatic transfer switches

Single point lift

1,000 hours extended service interval

CE Certification

Stone guards

Base feet

Neutral earth link



www.FGWilson.com
