



# Cat<sup>®</sup> 216B Series 3

## SKID STEER LOADER

### FEATURES:

The Cat<sup>®</sup> 216B Series 3 Skid Steer Loader, with its radial lift design, delivers excellent digging performance with outstanding drawbar power. The 216B Series 3 features the following:

- **Ergonomic operator station** features easy to use pilot operated joystick controls for reduced operator fatigue and increased productivity.
- **High performance power train** provides high engine horsepower and torque, allowing part-throttle operation for lower sound levels and fuel consumption.
- **Advanced hydraulic system** is designed for maximum power and reliability.
- **Easy routine maintenance** helps reduce machine downtime for greater productivity.
- **Broad range of performance matched Cat Work Tools** make the Cat Skid Steer Loader the most versatile machine on the job site.

## Specifications

### Engine

|                             |          |                     |
|-----------------------------|----------|---------------------|
| Engine Model                | Cat C2.2 |                     |
| Gross Power SAE J1995       | 38 kW    | 51 hp               |
| Net Power SAE 1349/ISO 9249 | 35 kW    | 47 hp               |
| Displacement                | 2.2 L    | 134 in <sup>3</sup> |
| Stroke                      | 100 mm   | 3.9 in              |
| Bore                        | 84 mm    | 3.3 in              |

### Weights\*

|                  |         |          |
|------------------|---------|----------|
| Operating Weight | 2581 kg | 5,690 lb |
|------------------|---------|----------|

### Power Train

|                                   |           |         |
|-----------------------------------|-----------|---------|
| Travel Speed (Forward or Reverse) | 12.7 km/h | 7.9 mph |
|-----------------------------------|-----------|---------|

### Hydraulic System

|                              |            |            |
|------------------------------|------------|------------|
| Hydraulic Flow – Standard:   |            |            |
| Loader Hydraulic Pressure    | 23 000 kPa | 3,335 psi  |
| Loader Hydraulic Flow        | 61 L/min   | 16 gal/min |
| Hydraulic Power (calculated) | 23.2 kW    | 31.1 hp    |

\*Operating Weight, Operating Specifications and Dimensions all based on 75 kg (165 lb) operator, all fluids, OROPS, 1524 mm (60 in) dirt bucket, Cat 10×16.5 tires, no optional counterweights and manual quick coupler (unless otherwise noted).

### Operating Specifications\*

|   |         |          |
|---|---------|----------|
| Rated Operating Capacity                                | 635 kg  | 1,400 lb |
| Rated Operating Capacity<br>with Optional Counterweight | 680 kg  | 1,500 lb |
| Tipping Load  | 1270 kg | 2,800 lb |
| Breakout Force, Tilt Cylinder                           | 1852 kg | 4,083 lb |

### Cab

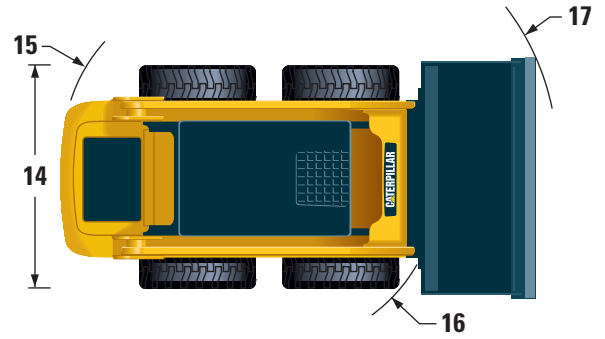
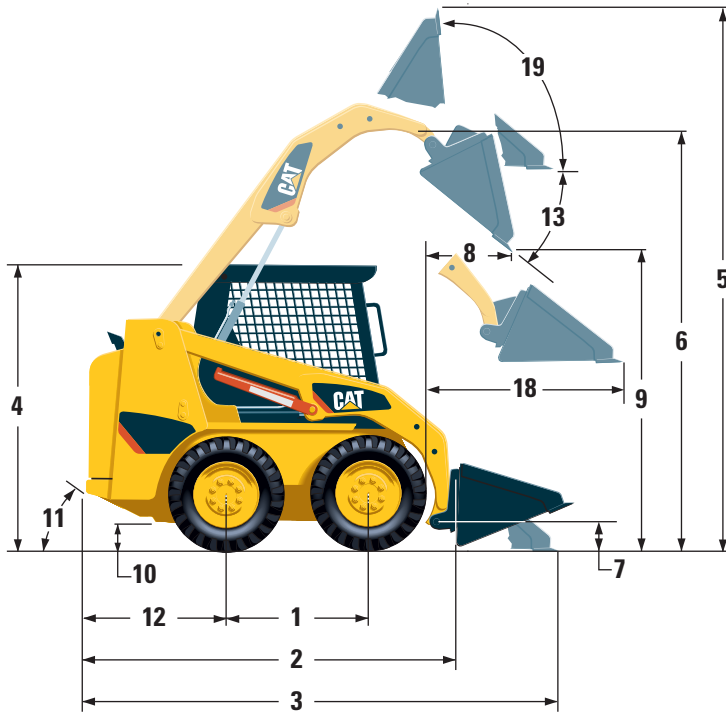
|               |  |
|---------------|--|
| ROPS          | SAE J1040 MAY94,<br>ISO 3471:1994                                      |
| FOPS          | SAE J/ISO 3449 APR98<br>Level I, ISO 3449:1992 Level I                 |
| FOPS Level II | SAE J/ISO 3449 APR98<br>Level II, ISO 3449:1992<br>Level II (optional) |

### Service Refill Capacities

|                      |      |          |
|----------------------|------|----------|
| Chain Box, each side | 6 L  | 1.6 gal  |
| Cooling System       | 10 L | 2.6 gal  |
| Engine Crankcase     | 10 L | 2.6 gal  |
| Fuel Tank            | 58 L | 15.4 gal |
| Hydraulic System     | 55 L | 14.5 gal |
| Hydraulic Tank       | 35 L | 9.2 gal  |



# 216B Series 3 Skid Steer Loader



## Dimensions\*

|                                       |         |         |  |               |
|---------------------------------------|---------|---------|--|---------------|
| 1 Wheelbase                           | 986 mm  | 39 in   | 11 Departure Angle                           | 26°           |
| 2 Length w/o Bucket                   | 2519 mm | 99 in   | 12 Bumper Overhang Behind Rear Axle          | 967 mm 38 in  |
| 3 Length w/Bucket on Ground           | 3233 mm | 127 in  | 13 Maximum Dump Angle                        | 40°           |
| 4 Height to Top of Cab                | 1950 mm | 77 in   | 14 Vehicle Width over Tires                  | 1525 mm 60 in |
| 5 Maximum Overall Height              | 3709 mm | 146 in  | 15 Turning Radius from Center – Machine Rear | 1502 mm 59 in |
| 6 Bucket Pin Height at Maximum Lift   | 2854 mm | 112 in  | 16 Turning Radius from Center – Coupler      | 1195 mm 47 in |
| 7 Bucket Pin Height at Carry Position | 200 mm  | 8 in    | 17 Turning Radius from Center – Bucket       | 1944 mm 77 in |
| 8 Reach at Maximum Lift and Dump      | 505 mm  | 20 in   | 18 Maximum Reach w/Arms Parallel to Ground   | 1291 mm 51 in |
| 9 Clearance at Maximum Lift and Dump  | 2169 mm | 85.4 in | 19 Rack Back Angle at Maximum Height         | 81°           |
| 10 Ground Clearance                   | 195 mm  | 8 in    |  |               |

## MANDATORY EQUIPMENT

---

- Quick Coupler, Mechanical or Hydraulic
- Seat Belt, 50 mm (2 in) or 75 mm (3 in)

### COMFORT PACKAGE *(must select one of the following)*

- Open ROPS (C0): *Static Seat*
- Open ROPS (C1): *Suspension Seat, Deluxe Headliner*
- Enclosed ROPS (C3): *Suspension Seat, Deluxe Headliner, Heater, Air Conditioner, Cab Door, Side Windows, Cup Holder, Cab Debris Barrier*

### CONTROL PACKAGE *(must select one of the following)*

- Control Package 1: *On/Off Auxiliary Hydraulics Basic*
- Control Package 2: *Proportional Auxiliary Hydraulics Deluxe*
- Control Package 3: *Proportional Auxiliary Hydraulics Deluxe, Work Tool Harness*

## STANDARD EQUIPMENT

---

### ELECTRICAL

- 12 volt Electrical System
- 65 ampere Alternator
- Automatic Glow Plug Activation
- Ignition Key Start/Stop Switch
- Lights: *Gauge Backlighting, Two Rear Tail Lights, Two Adjustable Front and Rear Halogen Lights, Dome Light*

### OPERATOR ENVIRONMENT

- Gauges: *Fuel Level, Hour Meter*
- Operator Warning System Indicators: *Air Filter Restriction, Alternator Output, Armrest Raised/Operator Out of Seat, Engine Coolant Temperature, Engine Oil Pressure, Glow Plug Activation, Hydraulic Filter Restriction, Hydraulic Oil Temperature, Parking Brake Engaged*
- Vinyl Seat
- Pull Down Ergonomic Contoured Armrest
- Control Interlock System, when operator leaves seat or armrest raised: *Hydraulic System Disables, Hydrostatic Transmission Disables, Parking Brake Engages*
- ROPS Cab, Open, Tilt Up
- FOPS, Level I
- Top and Rear Windows
- Interior Rearview Mirror
- 12 volt Electric Socket
- Horn
- Backup Alarm

### POWER TRAIN

- Cat C2.2 Diesel Engine
- Meets EU Stage IIIA equivalent and Bharat Stage III emission standards
- Air Cleaner, Dual Element, Radial Seal
- S-O-S<sup>SM</sup> Sampling Valve, Hydraulic Oil
- Filters: Spin on, Hydraulic
- Filters: Bayonet-type, Fuel and Water Separator
- Tilt Up Radiator/Hydraulic Oil Cooler
- Muffler, Standard
- Spring Applied, Hydraulically Released Parking Brakes
- Hydrostatic Transmission
- Four Wheel Chain Drive

### OTHER

- Engine Enclosure, Lockable
- Extended Life Antifreeze, -36° C (-33° F)
- Machine Tie Down Points (4)
- Support, Lift Arm
- Hydraulic Oil Level Sight Gauge
- Radiator Coolant Level Sight Gauge
- Radiator, Expansion Bottle
- Cat ToughGuard™ Hose
- Auxiliary, Hydraulics, Continuous Flow
- Heavy Duty, Flat Faced Quick Disconnects
- Split D-Ring to Route Work Tool Hoses Along Side of Left Lift Arm
- Electrical Outlet, Beacon
- Belly Pan Cleanout
- Product Link™ PL240, Cellular

## OPTIONAL EQUIPMENT

---

- Counterweight, increases rated operating capacity 45 kg (100 lb)
- Beacon, Rotating
- Engine Block Heater – 120V or 240V
- Oil, Hydraulic, Cold Operation
- Heavy Duty Battery, 880 CCA

# 216B Series 3 Skid Steer Loader

---

For more complete information on Cat products, dealer services, and industry solutions, visit us on the web at [www.cat.com](http://www.cat.com)

© 2018 Caterpillar  
All rights reserved

Materials and specifications are subject to change without notice. Featured machines in photos may include additional equipment. See your Cat dealer for available options.

CAT, CATERPILLAR, SAFETY.CAT.COM, their respective logos, "Caterpillar Yellow" and the "Power Edge" trade dress, as well as corporate and product identity used herein, are trademarks of Caterpillar and may not be used without permission.

AEHQ6103-02 (03-2018)  
Replaces AEHQ6103-01

