

# 986H

## Wheel Loader



### Engine

Engine Model	Cat® C15 ACERT™	
Gross Power – ISO 14396	329 kW	441 hp
Net Power – SAE J1349	305 kW	409 hp

### Buckets

Bucket Capacities	5-10.3 m <sup>3</sup>	6.5-13.5 yd <sup>3</sup>
-------------------	-----------------------	--------------------------

### Operating Specifications

Rated Payload – Quarry Face	10 tonnes	11 tons
Rated Payload – Loose Material (Standard)	12.7 tonnes	14 tons
Rated Payload – Loose Material (High Lift)	11 tonnes	12.1 tons
Operating Weight	43 717 kg	96,379 lb

# Lower your cost per ton with built-in durability.



### Contents

- Structures.....4
- Power Train.....6
- Hydraulics .....8
- Operator Station.....10
- Technology Solutions .....12
- Safety .....13
- Serviceability .....14
- Customer Support.....14
- Sustainability .....15
- System Match Efficiency.....16
- Bucket Ground Engaging Tools .....17
- Specifications.....18
- Standard Equipment.....27
- Optional Equipment.....28
- Mandatory Attachments.....28
- Notes.....29

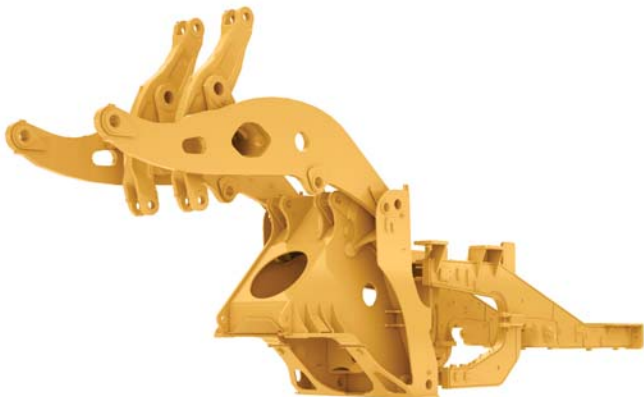


**Cat Large Wheel Loaders are designed with durability built in, ensuring maximum availability through multiple life cycles. With optimized performance and simplified serviceability, our machines allow you to move more material efficiently and safely at a lower cost per ton.**

**The new 986H builds upon this legacy of durability, performance, safety, operator comfort, serviceability and sustainability.**

# Structures

Best built for the toughest conditions.



## Lift Arms

Your key to maximum uptime and productivity is our field-proven lift arms.

- Excellent visibility to the bucket edges and work area through a Z-bar design.
- High load stresses are absorbed by the solid steel lift arms.
- Enhance strength in key pin areas through the use of one piece castings.



### **Robust Structures**

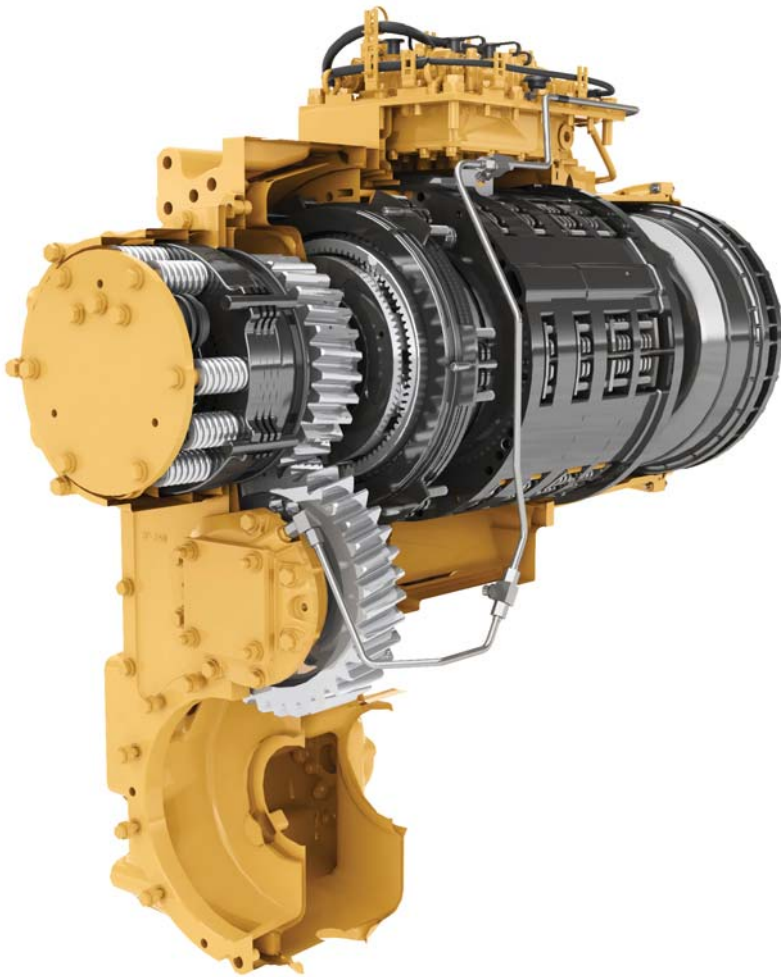
Your bottom line is improved by highly durable structures that achieve multiple life cycles and withstand the toughest loading conditions.

- Full box-section rear frame resists torsional shock and twisting forces.
- Heavy-duty steering cylinder mounts efficiently transmit loads into the frame.
- Cast axle pivot mounting areas better disperse stress loads for increased structural integrity.



### **Front Linkage**

To ensure long life and reliability, the linkage pin joints feature a greased pin design with optional auto lube system.



### **Cat Planetary Powershift Transmission**

Building your success begins with a best-in-class transmission designed specifically for mining applications.

- Consistent, smooth shifting and efficiency through integrated electronic controls.
- Heat treated gears and shafts extend component life and maximize reliability.
- Four forward and three reverse speeds to match your application.

### **Cat C15 ACERT Engine**

Durability and efficiency at the heart of your 986H comes from the Cat C15 Acert engine. Optimum performance is built in to this 6 cylinder turbocharged engine.

- Mechanically Actuated Electronic Unit Injection (MEUI™) controls injection pressure over the entire engine operating range. This gives the C15 ACERT engine complete control over injection timing, duration and pressure.
- Extended engine life through Cat components with proven reliability.
- The Advanced Diesel Engine Management (ADEM™) A4 electronic control module manages fuel delivery to optimize performance and provide quick engine response.





## Power Train

Move material more efficiently with improved power and control.

### Transmission Neutralizer Pedal

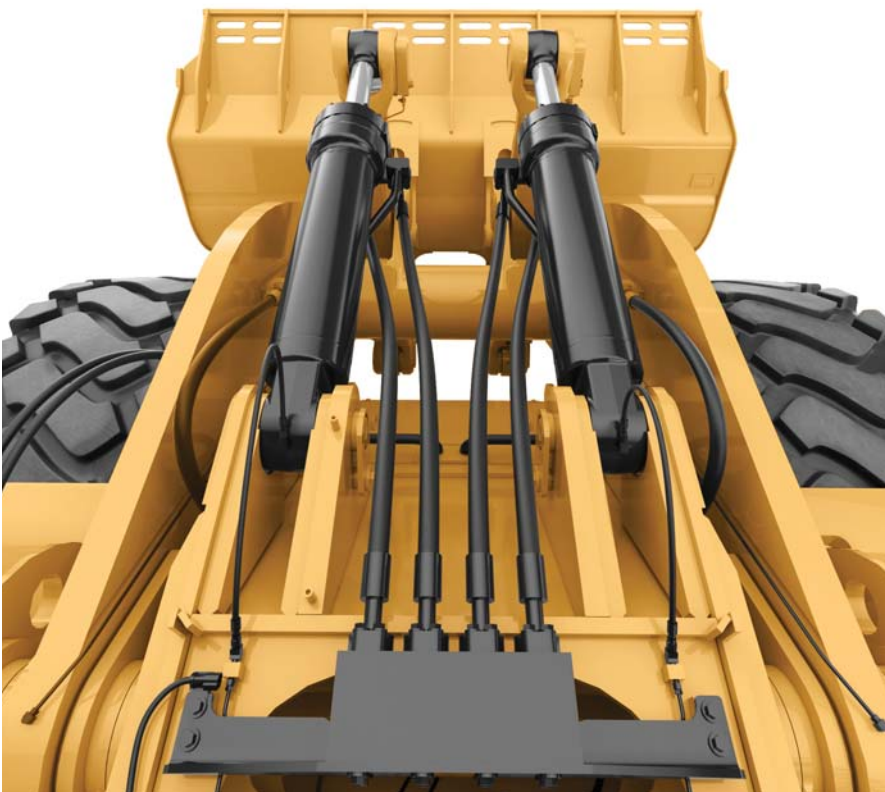
- Extends service brake life by neutralizing transmission as service brakes are applied.
- Allows full power to implement system while the machine is stationary during truck loading.

- 1 **Set Point for Neutralization** – Start of service brake pressure modulation
- 2 **Full Pedal Travel** – Maximum brake pressure



# Hydraulics

Productivity enabling you to move more and make more.



## Load Sense Hydraulics

Increase efficiency through our Load Sense Hydraulic System. Load sense hydraulics maximize performance by directing hydraulic fluid flow through implement and steering system only when needed.

- Lowered fuel consumption.
- Consistent performance and efficiency with lower system heat.





### Simple, Intuitive Operator Interface

Operators will be productive right away with our easy-to-use operator interface.

- Comfortable soft detent implement controls.
- Low effort, responsive steering wheel.
- Easy-to-use, in-cab programmable lift kickout allows the operator to pre set linkage positions and achieve faster cycle times.

### 3rd Valve Hydraulic Control

- Provides versatility through the ability to control a specialized attachment.

### Filtration System

Benefit from extended performance and reliability of your hydraulic system with our advanced filtration system.

- Implement pump case drain filters.
- Implement system filter.
- Steering pump case drain filters.
- Power train oil filter.





**Your operators can work more efficiently and stay comfortable with our customer-inspired cab features.**



### **Entry and Exit**

Enter and exit the cab easily and safely with these newly designed, ergonomic features.

- Punch stamped tread plates provide excellent footing.
- Spacious cab provides ample space for comfortable entry and exit.
- Angled access ladder.

### **Cat Comfort Series III Seat**

Enhance comfort and reduce operator fatigue with Cat Comfort Series III seat.

- High back design and extra thick, contoured cushions.
- Air suspension system.
- Easy-to-reach seat levers and controls for six way adjustments.
- Seat-mounted implement pod that moves with the seat.
- Optional heated seat for cold weather applications.





# Operator Station

Best-in-Class operator comfort and ergonomics.

**Environment**  
Your operator's productivity is enhanced with our clean, comfortable cab environment.



# Technology Solutions

Greater productivity through Integrated Electronic Systems.



## Optional Rear View Camera

Cat Work Area Vision System (WAVS) enhances visibility around the job site through the use of a rear view camera. A camera mounted at the rear of the machine provides the input to the monitor display mounted in the front right corner of the cab, within the operators field of vision.



## Cat Monitoring System

This includes a digital readout for gear selection and ground speed as well as gauge displays for:

- Fuel tank level.
- Engine and steering oil pressures.
- Engine coolant temperature.
- Torque converter and hydraulic oil temperature.
- Engine inlet air temperature.



# Safety

Making your safety our priority.

We are constantly improving our products in an effort to provide a safe work environment for the operator and those who work on your job site.

## Machine Access

- Walkways with non-skid surfaces are designed into the service areas.
- Windshield cleaning platforms provide safe and convenient access for the operator.
- Maintain three points of contact at all times through ground level or platform accessible service areas.
- Angled access ladder and strategically placed grab handles provide safe access and egress for the operator.



## Operator Environment

- Low interior sound levels.
- Cab mounted LED warning beacon.
- Optional heated seat.
- Optional HID lights provide optimal workspace visibility.
- Full Roll Over Protection System (ROPS) integrated into cab design.

# Serviceability

Enabling high uptime by reducing your service time.



**We can help you succeed by ensuring your 986H has design features to reduce your downtime.**

- Longer service intervals on fluids and filters.
- Safe and convenient service with ground level or platform access and grouped service points.
- Centralized, ground level grease points for injecting grease into linkage pin joints.
- Centralized remote pressure taps for power train components.
- Ground electrical service center with emergency engine shutdown switch, battery disconnect switch and circuit breakers.



# Customer Support

Your Cat dealers know how to keep your mining machines productive.

## Legendary Cat Dealer Support

A valued partner, your Cat dealer is available whenever you need them.

- Preventive maintenance programs and guaranteed maintenance contracts.
- Best-in-class parts availability.
- Improve your efficiency with operator training.
- Genuine Cat Remanufactured parts.





# Sustainability

Stewards of the environment.

## Reducing Impact to the Environment

Sustainability is designed and built into our 986H's features.

- Engine Idle Shutdown can help you save fuel by avoiding unnecessary idling.
- Reduce waste with our maintenance free or extended maintenance batteries.
- To assist with maximizing machine life, Caterpillar provides a number of sustainable options such as our Reman and Certified Rebuild programs. In these programs, reused or remanufactured components can deliver cost savings of 40 to 70 percent, which lowers operating cost while benefiting the environment.
- Caterpillar offers retrofit packages to bring new features to older machines, maximizing your resource. And, when you go through the Cat Certified Rebuild program, these retrofit kits are part of the rebuild process.

# System Match Efficiency

Efficient loading/hauling system starts with a perfect match.



	735B	740B	770G	772G	773E/773G
Standard Lift	3	4	4		
High Lift				5	6

## Efficient Combination

For full truck payloads with minimum loading time, an efficient loading/hauling system starts with a perfect match. Cat wheel loaders are matched with Cat articulated and off-highway trucks to maximize volume of material moved at the lowest operating cost per ton.

The 986H equipped with the standard linkage is a perfect four pass match for the 770G (38.6 tonnes/42.6 tons). The 986H equipped with a high lift linkage is capable of loading a 772G (47.7 tonnes/52 tons) in 5 passes and a 773E or 773G (56 tonnes/61.7 tons) in 6 passes.



# Bucket Ground Engaging Tools

Protect your investment.

## Performance Series Buckets

Performance Series Buckets feature an optimized profile maximizing material retention and minimizing dig time, translating into significant productivity and fuel efficiency improvements. All 986H buckets are manufactured with the Performance Series design.

## Rock Bucket

**Applications:** Face loading tightly compacted pit materials.

## General Purpose Bucket

**Applications:** Loading loose, stockpiled material.

## Quick Coupler

The optional quick coupler allows the operator to quickly switch between multiple work tools, making the 986H highly versatile.

## GET Options

Multiple GET options are available to customize your 986H to your application, such as:

- Sidebar protectors.
- General duty and penetration tips.
- Standard and half arrow segments.



Enhance the productivity of your loader and protect your investment in buckets with our Ground Engaging Tools (GET). Your knowledgeable Cat dealer will work with you to understand your application and needs for the GET that is best for you. For a full list of Cat GET please visit <http://www.cat.com/get>.

# 986H Wheel Loader Specifications

## Engine

Engine Model	Cat C15 ACERT*	
Rated Speed	1,800 rpm	
Gross Power – ISO 14396	329 kW	441 hp
Gross Power – SAE J1995	335 kW	449 hp
Net Power – SAE J1349	305 kW	409 hp
Bore	137 mm	5.4 in
Stroke	171.5 mm	6.75 in
Displacement	15.2 L	927 in <sup>3</sup>
Peak Torque @ 1,200 rpm	2320 N•m	1,711 lb ft
Torque Rise	37%	

\*Meets U.S. EPA Tier 3 equivalent, EU Stage IIIA equivalent, and Japan 2006 (Tier 3) equivalent emission standards OR meets U.S. EPA Tier 2 equivalent, EU Stage II equivalent, and Japan 2001 (Tier 2) equivalent emission standards. Products offered in the United States of America will meet U.S. EPA Tier 3 equivalent emission standards by using U.S. EPA Flex provisions.

## Operating Specifications

Operating Weight	43 717 kg	96,379 lb
Rated Payload – Quarry Face	10 tonnes	11 tons
Rated Payload – Loose Material (Standard)	12.7 tonnes	14 tons
Rated Payload – Loose Material (High Lift)	11 tonnes	12.1 tons
Bucket Capacity Range	5-10.3 m <sup>3</sup>	6.5-13.5 yd <sup>3</sup>
Cat Truck Match – Standard	770	
Cat Truck Match – High Lift	772	

## Transmission

Transmission Type	Cat planetary power shift	
Forward 1	7.3 km/h	5 mph
Forward 2	12.2 km/h	8 mph
Direct Drive – Forward 2	12.7 km/h	8 mph
Direct Drive – Forward 3	22 km/h	14 mph
Direct Drive – Forward 4	39 km/h	24 mph
Reverse 1	7.6 km/h	5 mph
Reverse 2	13.6 km/h	8 mph
Direct Drive – Reverse 2	14.1 km/h	9 mph
Direct Drive – Reverse 3	25 km/h	16 mph

• Travel speeds based on R35/65-33 tires.

## Hydraulic System – Lift/Tilt

Lift/Tilt System – Circuit	Load Sense	
Lift/Tilt System Pumps	2 × 110 cc variable displacement	
Maximum Flow at 2,165 rpm	470 L/min	123 gal/min
Relief Valve Setting – Lift/Tilt	27 900 kPa	4,050 psi
Lift Cylinder – Bore	190 mm	7.5 in
Lift Cylinder – Stroke	1138 mm	45 in
Tilt Cylinder – Bore	170 mm	6.7 in
Tilt Cylinder – Stroke	722 mm	28.4 in

# 986H Wheel Loader Specifications

## Hydraulic Cycle Time

Rackback	4.5 Seconds
Raise	9 Seconds
Dump	3.5 Seconds
Lower	5.2 Seconds
Lower Float Down	4.3 Seconds
Total Hydraulic Cycle Time	21.3 Seconds

## Service Refill Capacities

Fuel Tank	600 L	159 gal
Cooling Systems	90 L	24 gal
Crankcase	34 L	9 gal
Transmission	75 L	20 gal
Axle Oil	356 L	94 gal
Differentials and Final Drives – Front	186 L	49 gal
Differentials and Final Drives – Rear	170 L	45 gal
Hydraulic System Factory Fill	330 L	87 gal
Hydraulic System (tank only)	125 L	33 gal

## Buckets

Bucket Capacities	5.3-8.4 m <sup>3</sup>	7-11 yd <sup>3</sup>
-------------------	------------------------	----------------------

## Axles

Front	Fixed
Rear	Trunnion
Oscillation Angle	±12.5°

## Brakes

Brakes	SAE J1473 OCT90, ISO 3450:1992
--------	-----------------------------------

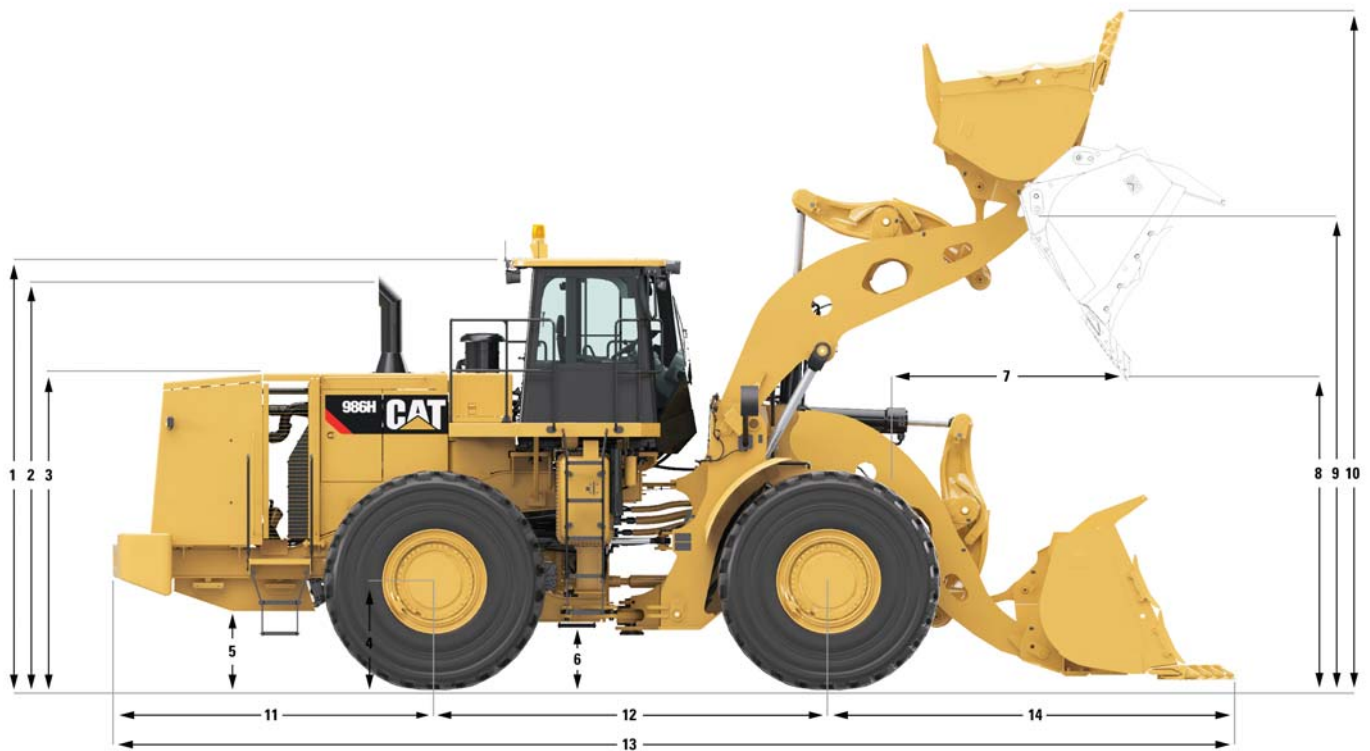
## Hydraulic System – Steering

Steering System – Circuit	Load Sense
Steering System – Pump	Piston, variable displacement
Maximum Flow @ 2,284 rpm	200 L/min    52 gal/min
Steering Cutoff Pressure	27 600 kPa    4,000 psi
Total Steering Angle	70 degrees

# 986H Wheel Loader Specifications

## Dimensions

All dimensions are approximate.



	Standard Lift Linkage		High Lift Linkage	
<b>1</b> Ground to Top of ROPS	4110 mm	13.5 ft	4110 mm	13.5 ft
<b>2</b> Ground to Top of Exhaust Stacks	3940 mm	12.9 ft	3940 mm	12.9 ft
<b>3</b> Ground to Top of Hood	2991 mm	9.8 ft	2991 mm	9.8 ft
<b>4</b> Ground to Center of Rear Axle	978 mm	3.2 ft	978 mm	3.2 ft
<b>5</b> Ground to Fuel Tank Clearance	691 mm	2.3 ft	691 mm	2.3 ft
<b>6</b> Ground to Lower Hitch Clearance	459 mm	1.5 ft	459 mm	1.5 ft
<b>7</b> Reach at Maximum Lift	2088 mm	6.8 ft	2161 mm	7.1 ft
<b>8</b> Clearance at Maximum Lift	3075 mm	10.1 ft	3642 mm	11.9 ft
<b>9</b> B-Pin Height at Maximum Lift	4912 mm	16.1 ft	5371 mm	17.6 ft
<b>10</b> Maximum Overall Height, Bucket Raised	6671 mm	21.9 ft	7193 mm	23.6 ft
<b>11</b> Rear Axle Center Line to Bumper	3132 mm	10.3 ft	3132 mm	10.3 ft
<b>12</b> Wheel Base	3810 mm	12.5 ft	3810 mm	12.5 ft
<b>13</b> Maximum Overall Length	11 011 mm	36.1 ft	11 329 mm	37.2 ft
<b>14</b> Front Axle Centerline to Bucket Tip	4069 mm	13.3 ft	4517 mm	14.8 ft

**Note:** Specs are calculated with 6.1 m<sup>3</sup> (8 yd<sup>3</sup>) rock bucket.

## Bucket Capacity/Material Density Selection Guide

### Rock Buckets – 10 tonnes (11 tons) Rated Payload

Material Density				Bucket Volume	
kg/m <sup>3</sup>	lb/yd <sup>3</sup>	tonnes/m <sup>3</sup>	tons/yd <sup>3</sup>	m <sup>3</sup>	yd <sup>3</sup>
1632-1795	2,750-3,025	1.63-1.80	1.38-1.51	6.1	8.0
1740-1914	2,933-3,227	1.74-1.91	1.46-1.61	5.7	7.5
1865-2051	3,143-3,457	1.86-2.05	1.57-1.73	5.4	7.0

### General Purpose Buckets – Standard Lift – 12.7 tonnes (14 tons) Rated Payload

Material Density				Bucket Volume	
kg/m <sup>3</sup>	lb/yd <sup>3</sup>	tonnes/m <sup>3</sup>	tons/yd <sup>3</sup>	m <sup>3</sup>	yd <sup>3</sup>
1512-1663	2,545-2,800	1.51-1.66	1.27-1.40	8.4	11
1671-1838	2,800-3,080	1.67-1.84	1.40-1.54	7.6	10
1984-2183	3,111-3,422	1.98-2.18	1.56-1.71	6.9	9

### General Purpose Buckets – High Lift – 11 tonnes (12.1 tons) Rated Payload

Material Density				Bucket Volume	
kg/m <sup>3</sup>	lb/yd <sup>3</sup>	tonnes/m <sup>3</sup>	tons/yd <sup>3</sup>	m <sup>3</sup>	yd <sup>3</sup>
1310-1440	2,200-2,420	1.31-1.44	1.10-1.21	8.4	11
1447-1592	2,420-2,662	1.45-1.59	1.21-1.33	7.6	10
1719-1891	2,689-2,958	1.72-1.89	1.34-1.48	6.9	9

**Note:** Rated Payload is the material weight in the bucket that the loader is designed to carry, excluding the weight of the bucket, GET, and wear material. Rated Payloads are published at 100%, even though Caterpillar does allow 110%. These values are given in terms of mass. There is no consideration to loose density weights of various materials since they are so diverse.

# 986H Wheel Loader Specifications

## Operating Specifications – Standard Lift

Tires: 35/65-33 Part Number: 359-4566

Bucket Type		Rock			HD Rock
Ground Engaging Tools		Teeth & Segments			Teeth & Segments
Cutting Edge Type		Spade			Spade
Bucket Part No.		434–2920	434–2930	434–2940	436–8300
Struck Capacity	m <sup>3</sup>	4.4	4.8	5.1	4.4
	yd <sup>3</sup>	5.8	6.2	6.7	5.8
Heaped Capacity (rated)	m <sup>3</sup>	5.4	5.7	6.1	5.4
	yd <sup>3</sup>	7.0	7.5	8.0	7.0
Width	mm	3812	3812	3812	3840
	ft	12.5	12.5	12.5	12.6
Dump Clearance at Full Lift and 45° Discharge (edge)	mm	3332	3282	3232	3280
	ft	10.9	10.8	10.6	10.8
Dump Clearance at Full Lift and 45° Discharge (with teeth)	mm	3175	3125	3075	3051
	ft	10.4	10.3	10.1	10.0
Reach at Lift and 45° Discharge (edge)	mm	1858	1904	1950	1919
	ft	6.1	6.2	6.4	6.3
Reach at Lift and 45° Discharge (with teeth)	mm	1996	2042	2088	2096
	ft	6.5	6.7	6.8	6.9
Reach with Lift Arms Horizontal and Bucket Level	mm	3474	3539	3604	3550
	ft	11.4	11.6	11.8	11.6
Digging Depth	mm	160	160	160	149
	in	0.5	0.5	0.5	0.5
Overall Length	mm	10 881	10 946	11 011	11 025
	ft	35.7	35.9	36.1	36.2
Overall Height with Bucket at Full Raise	mm	6609	6671	6734	6609
	ft	21.7	21.9	22.1	21.7
Loader Clearance Turning Radius (SAE carry)	mm	8674	8690	8707	8738
	ft	28.5	28.5	28.6	28.7
Full Dump Angle	deg	–50	–50	–50	–50
Static Tipping Load Straight (no tire squash)	kg	28 737	28 560	28 380	27 514
	lb	63,354	62,964	62,567	60,659
Static Tipping Load Straight (with tire squash)	kg	27 265	27 077	26 886	26 059
	lb	60,109	59,694	59,273	57,451
Static Tipping Load – Full Turn (articulated 35°) (no tire squash)	kg	25 506	25 335	25 161	24 279
	lb	56,232	55,854	55,471	53,526
Static Tipping Load – Full Turn (articulated 35°) (with tire squash)	kg	23 453	23 269	23 082	22 247
	lb	51,705	51,299	50,887	49,046
Breakout Force	kN	356	341	328	335
	lb-f	79,932	76,710	73,709	75,296
Operating Weight	kg	43 501	43 609	43 717	44 591
	lb	95,904	96,140	96,380	98,306
Weight Distribution at SAE Carry (unloaded) – Front	kg	22 276	22 473	22 672	24 196
	lb	49,110	49,544	49,982	53,343
Weight Distribution at SAE Carry (unloaded) – Rear	kg	21 225	21 136	21 046	20 395
	lb	46,794	46,597	46,397	44,963
Weight Distribution at SAE Carry (loaded) – Front	kg	38 897	39 128	39 362	40 788
	lb	85,753	86,262	86,778	89,923
Weight Distribution at SAE Carry (loaded) – Rear	kg	14 604	14 481	14 355	13 802
	lb	32,197	31,924	31,648	30,429

# 986H Wheel Loader Specifications

## Operating Specifications – Standard Lift

Tires: 35/65-33 Part Number: 359-4566

Bucket Type		General Purpose				Coal
		Segments				Segments
Ground Engaging Tools		Straight				Straight
Cutting Edge Type						
Bucket Part No.		436-8310	436-8320	436-8330	477-1900	436-8340
Struck Capacity	m <sup>3</sup>	5.2	5.9	6.6	7.3	9.0
	yd <sup>3</sup>	6.8	7.7	8.6	9.6	11.8
Heaped Capacity (rated)	m <sup>3</sup>	6.1	6.9	7.7	8.4	10.3
	yd <sup>3</sup>	8.0	9.0	10.0	11.0	13.5
Width	mm	3687	3687	3687	3729	3729
	ft	12.1	12.1	12.1	12.2	12.2
Dump Clearance at Full Lift and 45° Discharge (edge)	mm	3481	3385	3292	3222	3266
	ft	11.4	11.1	10.8	10.6	10.7
Dump Clearance at Full Lift and 45° Discharge (with teeth)	mm	—	—	—	—	—
	ft	—	—	—	—	—
Reach at Lift and 45° Discharge (edge)	mm	1743	1831	1917	2081	2012
	ft	5.7	6.0	6.3	6.8	6.6
Reach at Lift and 45° Discharge (with teeth)	mm	—	—	—	—	—
	ft	—	—	—	—	—
Reach with Lift Arms Horizontal and Bucket Level	mm	3294	3419	3540	3772	3692
	ft	10.8	11.2	11.6	12.4	12.1
Digging Depth	mm	143	143	143	143	160
	in	0.5	0.5	0.5	0.5	0.5
Overall Length	mm	10 487	10 612	10 733	10 965	10 899
	ft	34.4	34.8	35.2	36.0	35.8
Overall Height with Bucket at Full Raise	mm	6844	6965	7063	7000	7394
	ft	22.5	22.9	23.2	23.0	24.3
Loader Clearance Turning Radius (SAE carry)	mm	8637	8668	8699	8761	8771
	ft	28.3	28.4	28.5	28.7	28.8
Full Dump Angle	deg	-50	-50	-50	-50	-50
Static Tipping Load Straight (no tire squash)	kg	28 976	28 620	28 272	27 537	27 952
	lb	63,880	63,095	62,330	60,708	61,623
Static Tipping Load Straight (with tire squash)	kg	27 472	27 098	26 734	26 011	26 277
	lb	60,565	59,740	58,939	57,344	57,931
Static Tipping Load – Full Turn (articulated 35°) (no tire squash)	kg	25 741	25 398	25 063	24 364	24 724
	lb	56,749	55,992	55,254	53,714	54,507
Static Tipping Load – Full Turn (articulated 35°) (with tire squash)	kg	23 650	23 285	22 931	22 248	22 423
	lb	52,139	51,335	50,554	49,048	49,434
Breakout Force	kN	400	367	340	297	307
	lb-f	89,924	82,515	76,334	66,675	69,100
Operating Weight	kg	43 424	43 636	43 843	44 135	44 365
	lb	95,734	96,202	96,656	97,301	97,809
Weight Distribution at SAE Carry (unloaded) – Front	kg	22 050	22 434	22 809	23 401	23 745
	lb	48,613	49,459	50,285	51,590	52,348
Weight Distribution at SAE Carry (unloaded) – Rear	kg	21 374	21 202	21 034	20 734	20 621
	lb	47,121	46,742	46,372	45,711	45,461
Weight Distribution at SAE Carry (loaded) – Front	kg	38 676	39 127	39 568	40 281	39 206
	lb	85,265	86,261	87,233	88,805	86,435
Weight Distribution at SAE Carry (loaded) – Rear	kg	14 749	14 509	14 274	13 854	14 231
	lb	32,515	31,987	31,470	30,542	31,374

# 986H Wheel Loader Specifications

## Operating Specifications – Standard Lift Aggregate Package

Tires: 35/65-33 Part Number: 359-4566

Bucket Type		General Purpose				Coal
Ground Engaging Tools		Segments				Segments
Cutting Edge Type		Straight				Straight
Bucket Part No.		436–8310	436–8320	436–8330	477–1900	436–8340
Struck Capacity	m <sup>3</sup>	5.2	5.9	6.6	7.3	9.0
	yd <sup>3</sup>	6.8	7.7	8.6	9.6	11.8
Heaped Capacity (rated)	m <sup>3</sup>	6.1	6.9	7.7	8.4	10.3
	yd <sup>3</sup>	8.0	9.0	10.0	11.0	13.5
Width	mm	3687	3687	3687	3729	3729
	ft	12.1	12.1	12.1	12.2	12.2
Dump Clearance at Full Lift and 45° Discharge (edge)	mm	3560	3471	3386	3222	3266
	ft	11.7	11.4	11.1	10.6	10.7
Dump Clearance at Full Lift and 45° Discharge (with teeth)	mm	—	—	—	—	—
	ft	—	—	—	—	—
Reach at Lift and 45° Discharge (edge)	mm	1743	1831	1917	2081	2012
	ft	5.7	6.0	6.3	6.8	6.6
Reach at Lift and 45° Discharge (with teeth)	mm	—	—	—	—	—
	ft	—	—	—	—	—
Reach with Lift Arms Horizontal and Bucket Level	mm	3294	3419	3540	3772	3692
	ft	10.8	11.2	11.6	12.4	12.1
Digging Depth	mm	143	143	143	143	160
	in	0.5	0.5	0.5	0.5	0.5
Overall Length	mm	10 487	10 612	10 733	10 965	10 899
	ft	34.4	34.8	35.2	36.0	35.8
Overall Height with Bucket at Full Raise	mm	6844	6965	7063	7000	7394
	ft	22.5	22.9	23.2	23.0	24.3
Loader Clearance Turning Radius (SAE carry)	mm	8637	8668	8699	8761	8771
	ft	28.3	28.4	28.5	28.7	28.8
Full Dump Angle	deg	–50	–50	–50	–50	–50
Static Tipping Load Straight (no tire squash)	kg	34 164	33 787	33 420	32 625	33 128
	lb	75,318	74,488	73,677	71,926	73,036
Static Tipping Load Straight (with tire squash)	kg	32 318	31 919	31 531	30 751	31 068
	lb	71,249	70,369	69,514	67,794	68,493
Static Tipping Load – Full Turn (articulated 35°) (no tire squash)	kg	30 271	29 910	29 558	28 808	29 245
	lb	66,737	65,940	65,164	63,510	64,473
Static Tipping Load – Full Turn (articulated 35°) (with tire squash)	kg	27 633	27 244	26 866	26 134	26 341
	lb	60,920	60,063	59,229	57,616	58,072
Breakout Force	kN	400	367	340	297	307
	lb-f	89,924	82,515	76,334	66,675	69,100
Operating Weight	kg	45 665	45 877	46 084	46 376	46 606
	lb	100,675	101,142	101,597	102,242	102,749
Weight Distribution at SAE Carry (unloaded) – Front	kg	20 525	20 909	21 283	21 875	22 219
	lb	45,249	46,096	46,921	48,226	48,984
Weight Distribution at SAE Carry (unloaded) – Rear	kg	25 141	24 969	24 801	24 501	24 388
	lb	55,425	55,046	54,676	54,015	53,765
Weight Distribution at SAE Carry (loaded) – Front	kg	41 648	42 118	42 577	43 323	37 678
	lb	91,817	92,853	93,865	95,510	83,065
Weight Distribution at SAE Carry (loaded) – Rear	kg	16 719	16 461	16 208	15 755	18 000
	lb	36,858	36,290	35,733	34,733	39,684



# 986H Wheel Loader Specifications

## Operating Specifications – High Lift

Tires: 35/65-33 Part Number: 359-4566

Bucket Type		Rock			HD Rock
Ground Engaging Tools		Teeth & Segments			Teeth & Segments
Cutting Edge Type		Spade			Spade
Bucket Part No.		434–2920	434–2930	434–2940	436–8300
Struck Capacity	m <sup>3</sup>	4.4	4.8	5.1	4.4
	yd <sup>3</sup>	5.8	6.2	6.7	5.8
Heaped Capacity (rated)	m <sup>3</sup>	5.4	5.7	6.1	5.4
	yd <sup>3</sup>	7.0	7.5	8.0	7.0
Width	mm	3812	3812	3812	3840
	ft	12.5	12.5	12.5	12.6
Dump Clearance at Full Lift and 45° Discharge (edge)	mm	3879	3833	3787	3833
	ft	12.7	12.6	12.4	12.6
Dump Clearance at Full Lift and 45° Discharge (with teeth)	mm	3734	3688	3642	3618
	ft	12.3	12.1	11.9	11.9
Reach at Lift and 45° Discharge (edge)	mm	1930	1976	2022	1992
	ft	6.3	6.5	6.6	6.5
Reach at Lift and 45° Discharge (with teeth)	mm	2069	2115	2161	2169
	ft	6.8	6.9	7.1	7.1
Reach with Lift Arms Horizontal and Bucket Level	mm	3838	3903	3968	3914
	ft	12.6	12.8	13.0	12.8
Digging Depth	mm	208	208	208	197
	in	0.7	0.7	0.7	0.6
Overall Length	mm	11 329	11 394	11 459	11 475
	ft	37.2	37.4	37.6	37.6
Overall Height with Bucket at Full Raise	mm	7067	7130	7193	7067
	ft	23.2	23.4	23.6	23.2
Loader Clearance Turning Radius (SAE carry)	mm	8870	8888	8906	8936
	ft	29.1	29.2	29.2	29.3
Full Dump Angle	deg	–50	–50	–50	–50
Static Tipping Load Straight (no tire squash)	kg	28 870	28 700	28 527	27 664
	lb	63,647	63,272	62,891	60,988
Static Tipping Load Straight (with tire squash)	kg	27 486	27 303	27 118	26 295
	lb	60,596	60,193	59,785	57,970
Static Tipping Load – Full Turn (articulated 35°) (no tire squash)	kg	25 439	25 274	25 107	24 228
	lb	56,083	55,720	55,352	53,414
Static Tipping Load – Full Turn (articulated 35°) (with tire squash)	kg	23 401	23 224	23 042	22 209
	lb	51,590	51,200	50,799	48,962
Breakout Force	kN	355	341	328	335
	lb-f	79,856	76,637	73,639	75,216
Operating Weight	kg	46 173	46 281	46 389	47 263
	lb	101,794	102,031	102,270	104,197
Weight Distribution at SAE Carry (unloaded) – Front	kg	22 213	22 423	22 635	24 269
	lb	48,971	49,433	49,901	53,503
Weight Distribution at SAE Carry (unloaded) – Rear	kg	23 960	23 858	23 754	22 994
	lb	52,823	52,598	52,370	50,693
Weight Distribution at SAE Carry (loaded) – Front	kg	40 064	40 307	40 554	42 094
	lb	88,326	88,862	89,405	92,802
Weight Distribution at SAE Carry (loaded) – Rear	kg	16 109	15 973	15 836	15 169
	lb	35,515	35,215	34,912	33,441

# 986H Wheel Loader Specifications

## Operating Specifications – High Lift

Tires: 35/65-33 Part Number: 359-4566

Bucket Type		General Purpose				Coal
		Segments				Segments
Ground Engaging Tools		Straight				Straight
Cutting Edge Type		Straight				Straight
Bucket Part No.		436-8310	436-8320	436-8330	477-1900	436-8340
Struck Capacity	m <sup>3</sup>	5.2	5.9	6.6	7.3	9.0
	yd <sup>3</sup>	6.8	7.7	8.6	9.6	11.8
Heaped Capacity (rated)	m <sup>3</sup>	6.1	6.9	7.7	8.4	10.3
	yd <sup>3</sup>	8.0	9.0	10.0	11.0	13.5
Width	mm	3687	3687	3687	3729	3729
	ft	12.1	12.1	12.1	12.2	12.2
Dump Clearance at Full Lift and 45° Discharge (edge)	mm	4018	3930	3844	3680	3725
	ft	13.2	12.9	12.6	12.1	12.2
Dump Clearance at Full Lift and 45° Discharge (with teeth)	mm	—	—	—	—	—
	ft	—	—	—	—	—
Reach at Lift and 45° Discharge (edge)	mm	1816	1904	1990	2154	2085
	ft	6.0	6.2	6.5	7.1	6.8
Reach at Lift and 45° Discharge (with teeth)	mm	—	—	—	—	—
	ft	—	—	—	—	—
Reach with Lift Arms Horizontal and Bucket Level	mm	3658	3783	3904	4136	4056
	ft	12.0	12.4	12.8	13.6	13.3
Digging Depth	mm	190	190	190	190	208
	in	0.6	0.6	0.6	0.6	0.7
Overall Length	mm	10 937	11 062	11 183	11 415	11 347
	ft	35.9	36.3	36.7	37.5	37.2
Overall Height with Bucket at Full Raise	mm	7303	7423	7522	7459	7853
	ft	24.0	24.4	24.7	24.5	25.8
Loader Clearance Turning Radius (SAE carry)	mm	8832	8867	8900	8967	8972
	ft	29.0	29.1	29.2	29.4	29.4
Full Dump Angle	deg	-50	-50	-50	-50	-50
Static Tipping Load Straight (no tire squash)	kg	29 088	28 747	28 414	27 727	28 063
	lb	64,129	63,376	62,642	61,127	61,869
Static Tipping Load Straight (with tire squash)	kg	27 674	27 312	26 960	26 277	26 471
	lb	61,011	60,213	59,437	57,931	58,358
Static Tipping Load – Full Turn (articulated 35°) (no tire squash)	kg	25 654	25 324	25 003	24 351	24 636
	lb	56,557	55,831	55,123	53,684	54,314
Static Tipping Load – Full Turn (articulated 35°) (with tire squash)	kg	23 581	23 227	22 844	22 239	22 354
	lb	51,987	51,207	50,362	49,029	49,282
Breakout Force	kN	400	367	339	296	307
	lb-f	89,827	82,426	76,250	66,601	69,033
Operating Weight	kg	46 096	46 308	46 515	46 807	47 037
	lb	101,625	102,092	102,547	103,192	103,699
Weight Distribution at SAE Carry (unloaded) – Front	kg	21 980	22 389	22 789	23 416	23 771
	lb	48,457	49,360	50,241	51,624	52,406
Weight Distribution at SAE Carry (unloaded) – Rear	kg	24 116	23 919	23 726	23 391	23 266
	lb	53,168	52,732	52,306	51,568	51,293
Weight Distribution at SAE Carry (loaded) – Front	kg	39 837	40 313	40 777	41 525	40 307
	lb	87,825	88,874	89,898	91,546	88,861
Weight Distribution at SAE Carry (loaded) – Rear	kg	16 260	15 996	15 737	15 282	15 802
	lb	35,846	35,265	34,695	33,692	34,838

## Standard Equipment

Standard equipment may vary. Consult your Cat dealer for details.

### ELECTRICAL

- Alarm, back-up
- Alternator, 115 amp
- Batteries, dry
- Battery disconnect switch
- Converter, 10/15 amp, 24V to 12V
- Lighting system (halogen, work lights)

### OPERATOR ENVIRONMENT

- Air conditioner
- Cab, sound suppressed and pressurized
- Cigar lighter, ashtray
- Controls, lift and tilt function
- Heater, defroster
- Horn
- Instrumentation, gauges
  - Coolant temperature
  - Engine hour meter
  - Hydraulic oil temperature
  - Power train oil temperature

- Light, cab, dome
- Lunchbox, beverage holders
- Mirrors, rearview (externally mounted)
- Seat, Cat Comfort (cloth), air suspension, six-way adjustable
- Seat belt, retractable
- Tinted glass
- Transmission gear indicator
- Wet-Arm wipers/washers (front and rear)
  - Intermittent front and rear wipers

### POWER TRAIN

- Brakes, oil-cooled, multi-disc, service/secondary
- Driveline parking brake
- Engine, C15 ACERT diesel, turbocharged/aftercooled
- Fuel priming pump (electric)
- Ground level engine shutoff
- Precleaner, engine air intake (above hood)
- Radiator

- Torque converter with LUC
- Transmission, planetary powershift, 4F/3R electronic control

### OTHER

- Doors, service access (locking)
- Fuel tank
- Hitch, drawbar with pin
- Hoses, Cat XT™
- Hydraulic, steering and brake filtration/screening system
- Mufflers
- Oil sampling valves
- Premixed 50% concentration of extended life coolant with freeze protection to  $-34^{\circ}\text{C}$  ( $-29^{\circ}\text{F}$ )
- Steering, load sensing

# 986H Optional Equipment and Mandatory Attachments

## Optional Equipment

With approximate changes in operating weights. Optional equipment may vary. Consult your Cat dealer for specifics.

### LINKAGE

- Quick coupler

### ELECTRICAL

- Batteries – additional

### OPERATOR ENVIRONMENT

- AM/FM/CD radio
- Rearview camera (WAVS)
- LED strobe warning beacon
- Radio ready

## Mandatory Attachments

Select one from each group. Mandatory and optional equipment may vary. Consult your Cat dealer for specifics.

### LINKAGE

- Autolube
- Manual grease pins
- Standard linkage
- High lift linkage

### ELECTRICAL

- No Product Link™
- Product Link (Satellite)
- Product Link (Cellular)

### STEERING

- Standard steering
- Secondary steering

### POWER TRAIN

- Axle oil cooler
- Standard axles

### LIGHTING

- Standard lighting (4 floods)
- Deluxe lighting (9 floods)
- HID lighting (4 floods, 4 HID's)

### OPERATOR ENVIRONMENT

- Standard seat
- Heated seat

### HYDRAULICS

- Ride Control
- No Ride Control
- Two function hydraulic system (standard lift/tilt)
- Three function hydraulic system (one auxiliary function)

### FUEL SYSTEM

- Cold weather starting package
- Conventional fuel arrangement







For more complete information on Cat products, dealer services, and industry solutions, visit us on the web at [www.cat.com](http://www.cat.com)

AEHQ6848-03 (09-2015)  
Replaces AEHQ6848-02

© 2015 Caterpillar  
All rights reserved

Materials and specifications are subject to change without notice. Featured machines in photos may include additional equipment. See your Cat dealer for available options.

CAT, CATERPILLAR, SAFETY.CAT.COM, their respective logos, "Caterpillar Yellow" and the "Power Edge" trade dress, as well as corporate and product identity used herein, are trademarks of Caterpillar and may not be used without permission.

