



# Cat<sup>®</sup> FH125 D

FACE HAULER

## Specifications

### Capacities

Payload (Nominal with Hungry Boards) Other Capacities Available	15 m <sup>3</sup>	19.6 yd <sup>3</sup>
Payload (Maximum Weight all Material)	20 000 kg	44,092 lb
Consult Caterpillar for Weight Over	15 000 kg	33,069 lb

### Weight

Unladen with Full Tanks	25 000 kg	55,115 lb
Laden with 15T Load	42 000 kg	92,594 lb
Type	Diesel, Turbocharged, 4 Cycle	
Cooling System	Water Based Radiator	
Cooling Fan	Hydraulic Driven Fan	
Engine Make/Model	Cat 3126	
Displacement	7.2 L	439.3 in <sup>3</sup>
Maximum Power	172 kW (230 hp) @ 2,200 rpm	
Maximum Torque	720 N-m (531 lb-ft) @ 1,400 rpm	

### Engine Speeds

Low Idle	800 rpm
High Idle	2,700 rpm
Governed	2,600 rpm

### Fuel Consumption

At Full Power	37.5 L/hr	9.9 gal/hr
Average Mine Duty	8-30 L/hr	2.1-7.9 gal/hr

### Start System

Starter Motor Type	Air Turbine Type
--------------------	------------------

### Intake Air Cleaner

Type/Make	Dry Dual Element/Caterpillar
Intake Flame Trap	Spiral Wound Type

### Exhaust Conditioner

Type	Flameproof Wet
Make	Caterpillar
Exhaust Filter	Replaceable Element Except China
Exhaust Flame Trap Aftertreatment	Replaceable China and RSA Catalytic Exhaust Purifier

### Transmission

Type	Power Shift with Forward/ Reverse Modulation
Speeds, Forward and Reverse	4

### Torque Converter

Type	Mounted in Transmission, Single Element
------	--

### Axles

#### Axles Standard

Type	Outboard Planetary
Front Axle	Fixed
Rear Axle	Fixed
Differential Type	Bevel Gear and Pinion

### Wheels

Make/Model	5 Piece (Heavy Duty)
------------	----------------------

### Tires – Standard

Type	XKA Tires
Size	17.5 × 25
Ply Rating	Radial
Inflation Media	Air
Inflation Pressure	800 kPa      116 psi

### Articulation

Bearing Type	Pin and Spherical Bearing (Top and Bottom) Fully Sealed
Degrees of Turn Either Side	± 42 Degrees

### Oscillation

Type	Center Articulation Bearing
Bearing Type	Ball Type Slewing Roller Bearing
Degrees Up and Down from Horizontal	± 30°



# FH125 D Face Hauler

## Seating (Driver)

Type	Cross-Seated
Suspension	Adjust Spring/ Shock Absorber

## Canopy

Type	Adjustable Protective Device MDG1
------	--------------------------------------

## Electrical System

Type	Approved Flameproof
Voltage	12V
Polarity	Negative Ground
Shutdown System	Electronic Intrinsically Safe Approved

## Lights

Number/Location	2 Front, 2 Rear
Type	High Performance Approved Flameproof

## Alternator

Drive	Hydraulic
Type	Approved Flameproof

## Pneumatic System

Compressor Type	Piston Engine Gear Driven	
Air Flow	0.340 m <sup>3</sup> /min (12 ft <sup>3</sup> /min) @ 1,500 rpm	
Governed Pressure	800 kPa	116 psi
Relief Pressure	830 kPa	120 psi
Air Receiver Volume	80 L	2.8 ft <sup>3</sup>

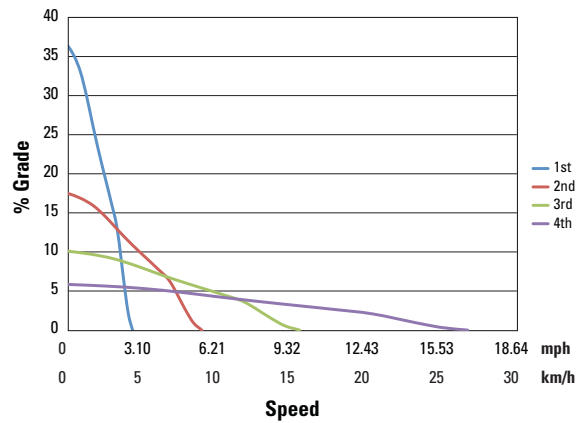
## Service Capacities

Hydraulic Tank	300 L	78.3 gal
Fuel Tank	300 L	78.3 gal
Transmission/Converter Oil	80 L	21 gal
Engine Crankcase Oil	22 L	5.8 gal
Engine Cooling System Water	72 L	19.0 gal
Axle Oil (Each)	60 L	15.8 gal

## Vehicle Speeds (Unladen) 17.5 × 25 Tires

1st Gear	3.8 km/h	2.3 mph
2nd Gear	7.8 km/h	4.8 mph
3rd Gear	13.6 km/h	8.5 mph
4th Gear	23.4 km/h	14.5 mph

Speed Grade FH125 D Loaded 15 T



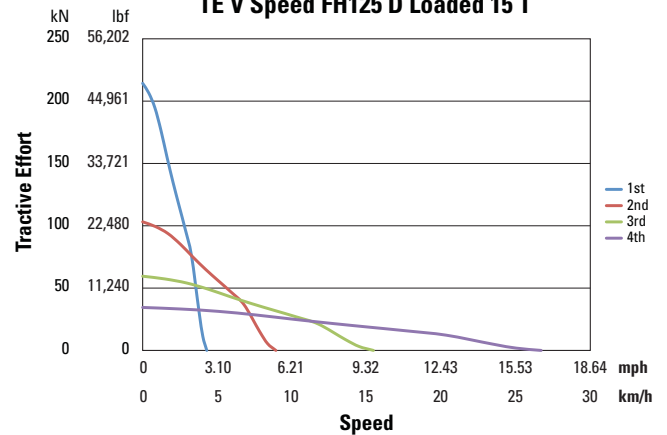
## Maximum Tractive Effort 17.5 × 25 Tires

1st Gear	210 kN	47,209 lb
----------	--------	-----------

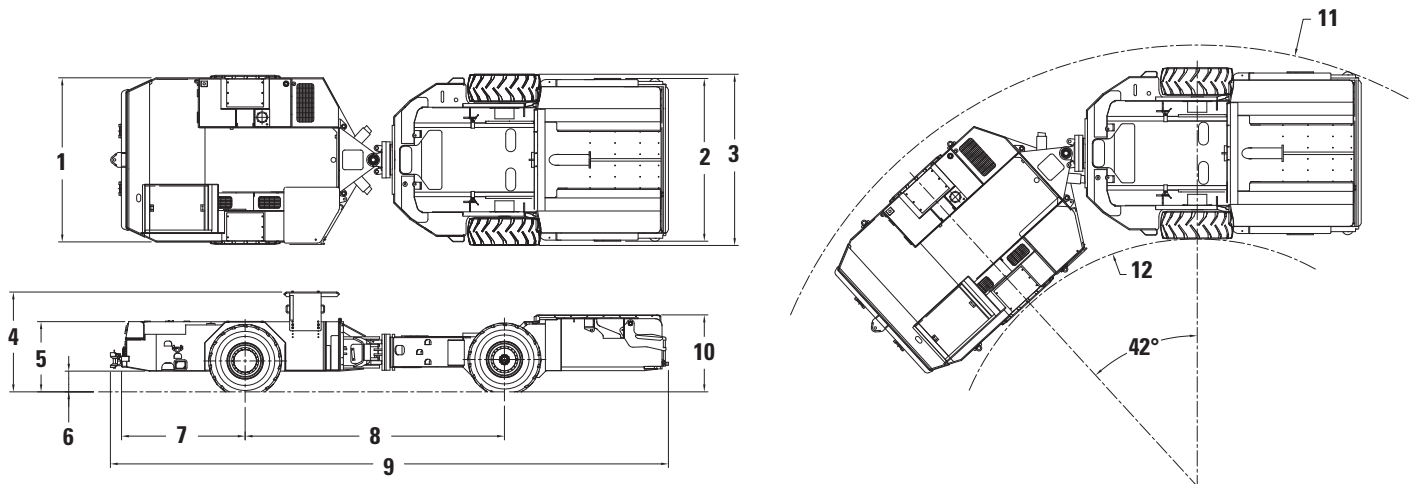
## Grade Ability

Front to Rear	1:4
Side to Side (Empty)	1:4

TE V Speed FH125 D Loaded 15 T



# FH125 D Face Hauler



## Dimensions (All dimensions are approximate.)

<b>1</b> Width – Cab	3330 mm	131.1 in
<b>2</b> Width – Hauler	3305 mm	130.1 in
<b>3</b> Width – Over Wheels	3475 mm	136.8 in
<b>4</b> Height – Top of ROPS		
Low Canopy Mount	1900 mm	74.8 in
Mid Canopy Mount	1962 mm	77.2 in
High Canopy Mount	2025 mm	79.7 in
<b>5</b> Height – Top of Covers	1425 mm	56.1 in
<b>6</b> Height – Ground Clearance	420 mm	16.5 in
<b>7</b> Length – Rear Axle to Bumper	2510 mm	98.8 in
<b>8</b> Length – Wheel Base	5263 mm	207.2 in
<b>9</b> Length – Overall	11 350 mm	446.8 in
<b>10</b> Height – Top of Hauler	1560 mm	61.5 in
<b>11</b> Outer Radius – Rear Frame	8960 mm	352.8 in
<b>12</b> Inner Radius	5020 mm	197.6 in

# FH125 D Face Hauler

---

## OPTIONAL EQUIPMENT

---

- Filled Tires – Insert or Foam
- Fire Suppression System
- Auto Lubrication System
- Flameproof Reversing Camera and Monitor
- 20.5 × 25 Tires
- Non Flameproof Versions
- Trailer Side Hungry Board Arrangements
- Trailer Tail Gate
- Others Available on Request

Contact your local Caterpillar representative for further information on this diesel powered product or any product in the Development and Diesel product line. If you have a specific job task requirement or a product that is not listed let Caterpillar assist by developing a solution for and with you.

For more complete information on Cat products, dealer services, and industry solutions, visit us on the web at [www.cat.com](http://www.cat.com)

AEHQ6827 (10-12)

© 2012 Caterpillar  
All Rights Reserved  
Printed in U.S.A.

Materials and specifications are subject to change without notice. Featured machines in photos may include additional equipment. See your Cat dealer for available options.

CAT, CATERPILLAR, SAFETY.CAT.COM, their respective logos, "Caterpillar Yellow" and the "Power Edge" trade dress, as well as corporate and product identity used herein, are trademarks of Caterpillar and may not be used without permission.

