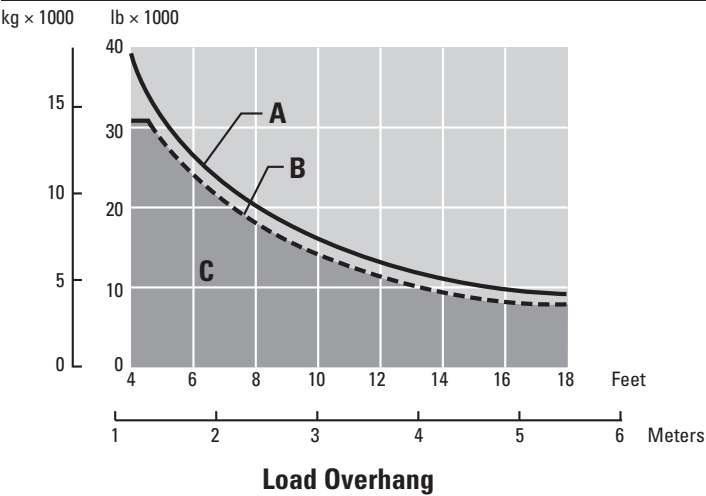


PL61 Pipelayer

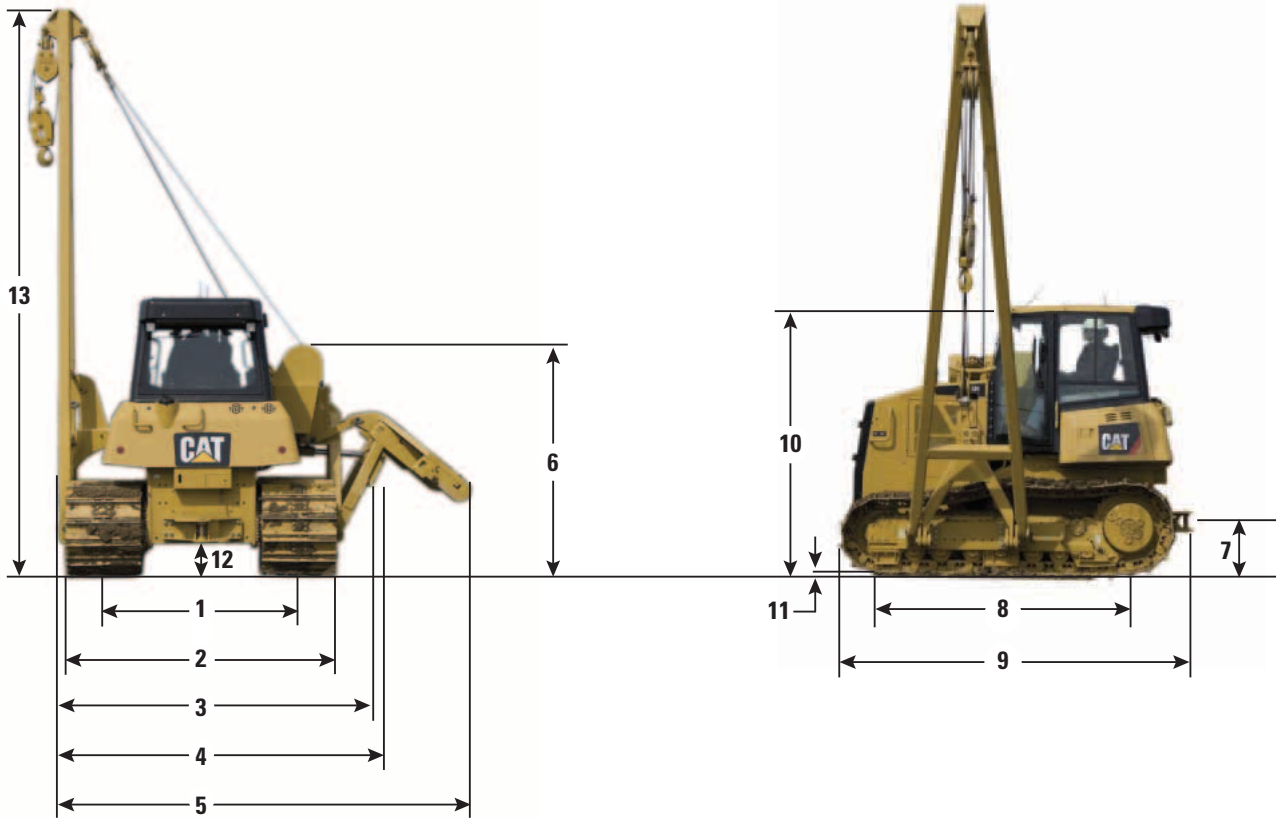


Specified Equipment		
Diameter Wire Rope	16 mm	5/8 in
Rope Minimum Breaking Strength	183.3 kN	41,200 lb
3 Part Load Line		
3 Part Boom Line		
Counterweight Extended	1231 kg	2,714 lb
Standard Boom	5.49 m	18 ft
Total Operating Weight		
Narrow	17 000 kg	37,480 lb
LGP	17 800 kg	39,242 lb

A – Lift capacity at tipping point – ISO 8813
B – Rated load capacity – ANSI/ASME B30.14
C – Working range – ANSI/ASME B30.14

PL61 Pipelayer

PL61 Dimensions



Tractor Dimensions	Narrow		LGP	
1 Track gauge	2000 mm	79 in	2000 mm	79 in
2 Width of tractor (standard shoes)	2560 mm	101 in	2760 mm	109 in
3 Width of tractor counterweight/boom removed	2917 mm	115 in	3117 mm	123 in
4 Width of tractor (counterweight retracted)	3000 mm	118 in	3200 mm	126 in
5 Width of counterweight extended	4426 mm	175 in	4414 mm	174 in
6 Machine height (tip of winch)	2454 mm	97 in	2454 mm	97 in
7 Drawbar height	483 mm	19 in	483 mm	19 in
8 Length of track on ground	2645 mm	104 in	2645 mm	104 in
9 Operating length	3784 mm	149 in	3784 mm	149 in
10 Height of machine				
Height of top of stack	2914 mm	115 in	2914 mm	115 in
Height to the top of the ROPS canopy/cab	2958 mm	116.5 in	2958 mm	116.5 in
11 Grouser height	48 mm	1.9 in	48 mm	1.9 in
12 Ground clearance (per SAE J1234)	360.4 mm	14.2 in	360.4 mm	14.2 in
13 Boom height [at SAE 1.22 m (4 ft) overhang]	6175 mm	243 in	6175 mm	243 in