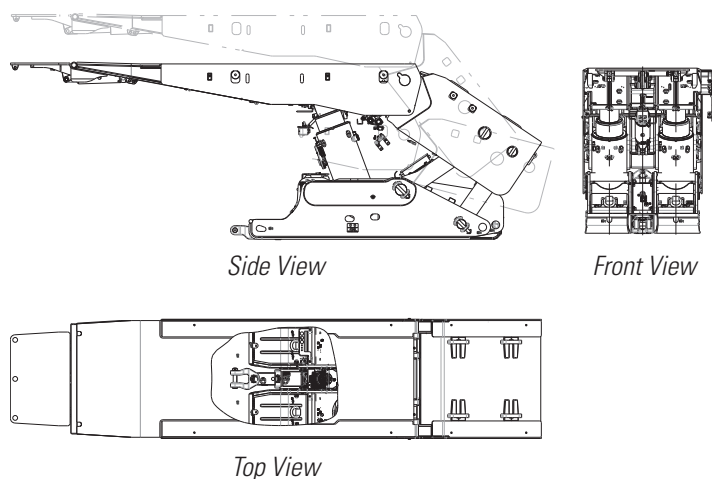
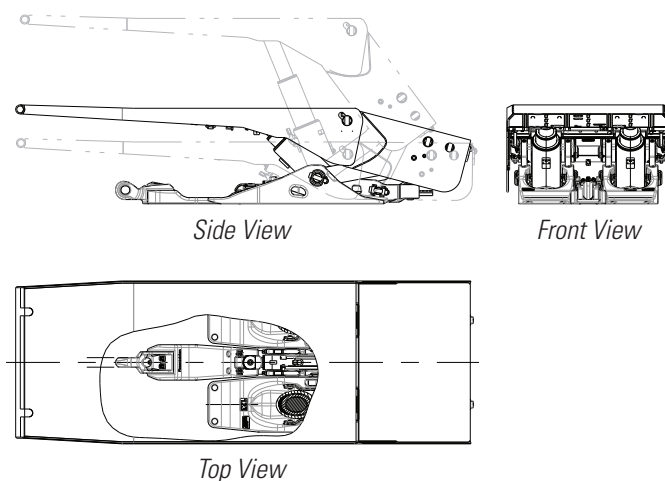


# Customized Roof Support Systems

## Example High Seam Roof Support



## Example Low Seam Roof Support



## Cat Roof Supports

Height Closed	500-2900 mm	19.7-114.2 in
Height Extended	1100-6100 mm	43.3-240.2 in
Shield Centers	1500-2050 mm	59-80.7 in
Nominal Leg Forces	$2 \times 800-2 \times 7156 \text{ kN}$	$2 \times 90-2 \times 805 \text{ ton}$
Shield Density	up to 111 tonne/m <sup>2</sup>	up to 12.5 ton/ft <sup>2</sup>
Hydraulic Leg	up to 500 mm	up to 19.7 in
Canopy	Rigid design (with telescopic flipper)	
Canopy Length	2997-8000 mm	118-315 in
Forepole Length	1980-4520 mm	78-178 in
Rear Projection	850-1448 mm	33.5-57 in
Base	Split design OR rigid design with telescopic relay bar/pusher cylinder	
Relay Bar		
Direct Mounted OR Reverse Mounted	650-1067 mm effective web	25.6-39.4 in effective web
Shifting Cylinder (with Reedrod)	700-1080 mm	27.6-42.5 in
Shield Pull Force	185-565 kN/ 315/320/350 bar	20.7-63.3 ton/ 4568/4640/5076 psi
Conveyor Push Force	89-815 kN/ 315/320/350 bar	10.0-91.5 ton/ 4568/4640/5076 psi
Side Seals – on Canopy, Caving Shield (and rear lemniscates)		
Both Sides Fixed/One Side Fixed, One Side Movable, Rehandable/Not Rehandable	up to 300 mm stroke	up to 11.8 in stroke
Materials	High strength steel	
Test	EN 1804, different test program with up to 90,000 cycles	
Weight	6.5-63.5 tonne	7.15-70 ton