



Cat[®] TL943C

Telehandler with Stabilizers

Specifications

Engine

| | | |
|---------------------------|---|--------------|
| Model | Cat [®] C4.4 ACERT [™] Tier 3 | |
| Gross Power (Basic) | 82.1 kW | 110.1 hp |
| Maximum Torque (Standard) | 486 Nm at 1400 rpm | 358 lb-ft |
| Bore | 105 mm | 4.1 in |
| Stroke | 127 mm | 5 in |
| Displacement | 4.4 L | 268 .5 cu in |

Weights

| | | |
|------------------|-----------|-----------|
| Operating Weight | 12 304 kg | 27,125 lb |
|------------------|-----------|-----------|

Operating Specifications

| | | |
|-----------------------------------|----------|-----------|
| Rated Load Capacity | 4082 kg | 9,000 lb |
| Maximum Lift Height | 13.1 m | 43 ft |
| Maximum Forward Reach | 9.6 m | 31.4 ft |
| Frame Leveling | 10° | |
| Top Travel Speed | 32.7 kph | 20.3 mph |
| Capacity at Max Height (o/r Up) | 3175 kg | 7,000 lb |
| Capacity at Max Height (o/r Down) | 3175 kg | 7,000 lb |
| Capacity at Max Reach (o/r Up) | 499 kg | 1,100 lb |
| Capacity at Max Reach (o/r Down) | 1225 kg | 2,700 lb |
| Turning Radius over Tires | 3.7 m | 12 ft |
| Drawbar Pull (Loaded) | 124.6 kN | 28,000 lb |

Hydraulic System

| | | |
|--|----------|------------|
| Variable displacement load sensing axial piston pump | | |
| System Operating Pressure | 276 bar | 4,000 psi |
| Auxiliary Hydraulic Pressure | 207 bar | 3,000 psi |
| Auxiliary Hydraulic Flow at Boom Head | 38 L/min | 10 gal/min |

- Auxiliary Hydraulic Circuit used for all attachments equipped with cylinders or other hydraulic components. Consists of valves, controls and hydraulic lines.

Service Refill Capacities

| | | |
|------------------|-------|--------|
| Fuel Tank | 144 L | 38 gal |
| Hydraulic System | 178 L | 47 gal |

Tires

| | | |
|----------|------------------------|--|
| Standard | 370/75-28 Duraforce MT | |
| Optional | 13.00 x 24 Foam Filled | |
| | 370/75-28 Foam Filled | |
| | 13.00 x 24 12 PR | |

Transmission Speeds

| | |
|---------|---------|
| Forward | 4 speed |
| Reverse | 3 speed |

Boom Performance

| | | | |
|-----------|--------------|----------|--------------|
| Boom Up | 10.9 Seconds | Tele In | 17 Seconds |
| Boom Down | 9.5 Seconds | Tele Out | 13.7 Seconds |

Axles

- Trunnion mounted planetary 55 degree steer axles.
- Integral steer cylinder.
- High bias limited slip differential on front axle.

Brakes

- Service Brakes are inboard wet disc brakes on front and rear axles.
- Parking Brakes are spring-applied hydraulic release on front axle. Light on dash indicates when brake is on.

Work Tools

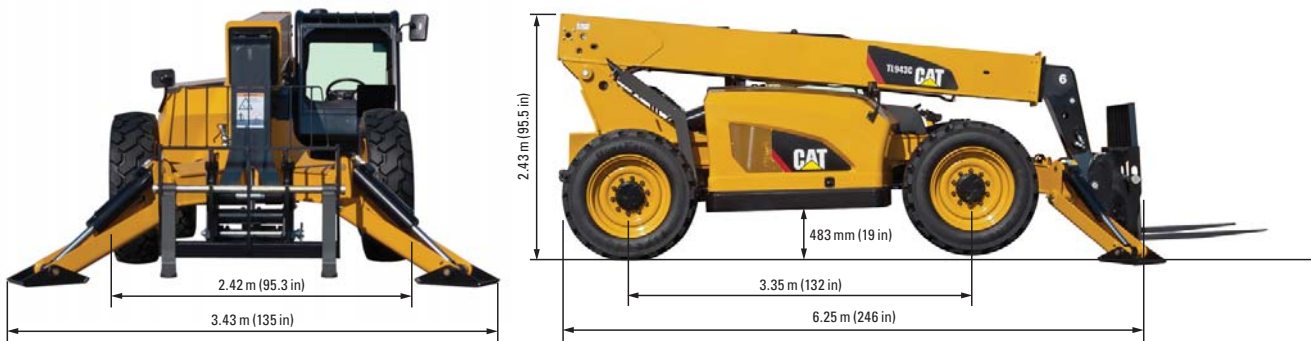
| | Includes Auxiliary Electrics | Includes Auxiliary Electrics |
|-----------------------|---|---|
| Hydraulic IT Coupler | | |
| Pallet Forks | (2) 1525 mm, 60 mm x 150 mm (2) 1220 mm, 60 mm x 100 mm (2) 1220 mm, 60 mm x 125 mm | (2) 60 in, 2.36 in x 6 in (2) 48 in, 2.36 in x 4 in (2) 48 in, 2.36 in x 5 in |
| Lumber Forks | (2) 1525 mm, 45 mm x 180 mm (2) 1829 mm, 50 mm x 150 mm | (2) 60 in, 1.75 in x 7 in (2) 72 in, 2 in x 6 in |
| Cubing Forks | (2) 1220 mm, 50 mm x 50 mm | (2) 48 in, 2 in x 2 in |
| Carriages: | | |
| Standard Tilt | 1270 mm | 50 in |
| Wide Tilt | 1829 mm | 72 in |
| Side Shift | 1220 mm | 48 in |
| Standard Rotate | 1270 mm | 50 in |
| Wide Rotate | 1829 mm | 72 in |
| Swing | 100°, 1829 mm, 4028 kg Capacity, 2268 kg Swung | 100°, 72 in, 9,000 lb Capacity, 5,000 lb Swung |
| Dual Fork Positioning | 1270 mm | 50 in |



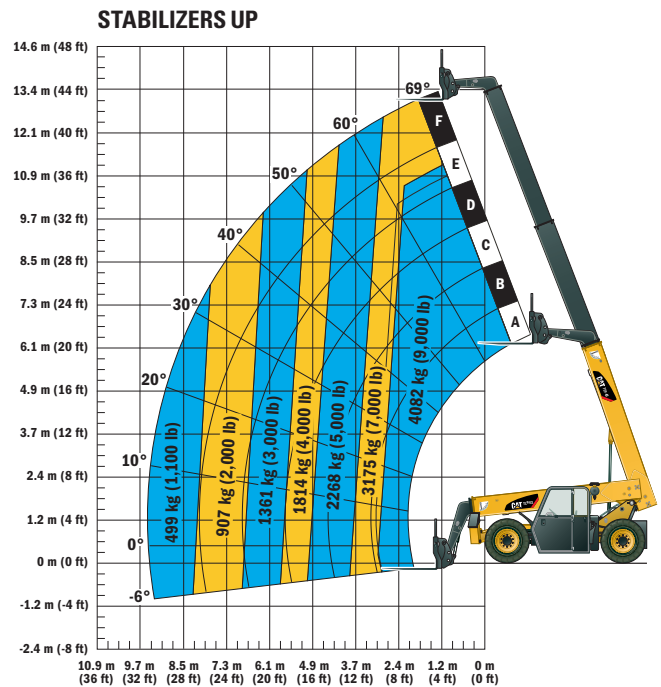
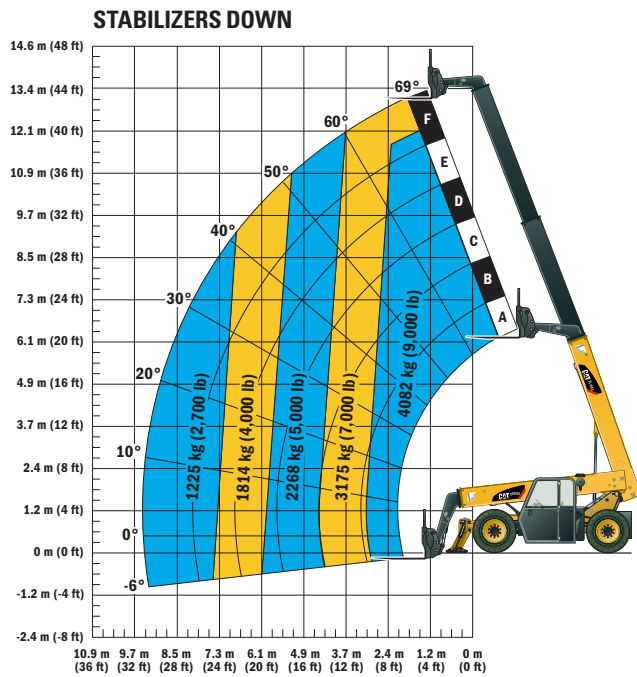
TL943C Telehandler with Stabilizers

Dimensions

All dimensions are approximate.



Load Chart and Dimensions



IMPORTANT

Rated lift capacities shown are with machine equipped with carriage and pallet forks. The machine must be level on a firm surface with undamaged, properly inflated tires. Machine specifications and stability are based on rated lift capacities at specific boom angles and boom lengths.

(If specifications are critical, the proposed application should be discussed with your dealer.)

DO NOT exceed rated lift capacity loads, as unstable and dangerous machine conditions will result.

DO NOT tip the machine forward to determine the allowable load.

Use only approved attachments with proper material handler model/attachment load capacity charts displayed in the operator's cab. OSHA

requires all rough terrain forklift operators be trained according to OSHA 29 CFR 1910.178 (1).

Due to continuous product improvements, machine specifications and/or equipment changes may be made without prior notification. This machine meets or exceeds ANSI/ITSDF B56.6-2005 as originally manufactured for intended applications.

