



Cat[®] CM340

Continuous Miner

Specifications

Operating Dimensions

Maximum mining height	4.15 m (13 ft 6 in) (with 229 mm (9 in) grnd. clear. & 1 168 mm (44 in) drum)
Minimum mining height	1.47 m (4 ft 6 in) (54 in zero cutting ht. profile - std. motors) 1.47 m (4 ft 8 in) (56 in zero cutting ht. profile - opt. motors)
Ground clearance	229 mm or 305 mm (9 or 12 in)
Length bumper to face	8.05 m (26 ft 5 in) (with 1 118 mm (44 in) dia. cutting drum)

Transport Dimensions

Width	3.38 m (11 ft 1 in) (without cutter head)
Overall length	11.02 m (36 ft 2 in) (with 1 118 mm (44 in) dia. cutting drum)
Height	1.27 m (4 ft 2 in)
Weight (total)	70 307 kg (155,000 lb) std. machine 74 843 kg (165,000 lb) optional additional 10,000 lbs

Cutting Unit

Cutting drum diameter	1 067 - 1 168 mm (42 - 46 in)
Cutting drum width	3.58 m (11 ft 9 in)
Cutting drum power	2 x 186 kW (250 hp) continuous rating 2 x 210 kW (280 hp) one hour rating
Optional power on cutting drum	2 x 224 kW (300 hp) continuous rating 2 x 250 kW (335 hp) one-hour rating

Loading Unit

Loading method	3 or 6 finger cla / 62 rpm
Conveyor width	965 mm (38 in)
Conveyor speed	2.43 m/s (483 fpm)
Conveyor depth	305 mm (12 in)
Loading capacity	13.6 - 35.3 tonne/minute (15 to 35 tons/minute)
Conveyor power through cla's	41 kW (2 x 55 hp) continuous rating 48 kW (2 x 65 hp) one-hour rating

Traction Units

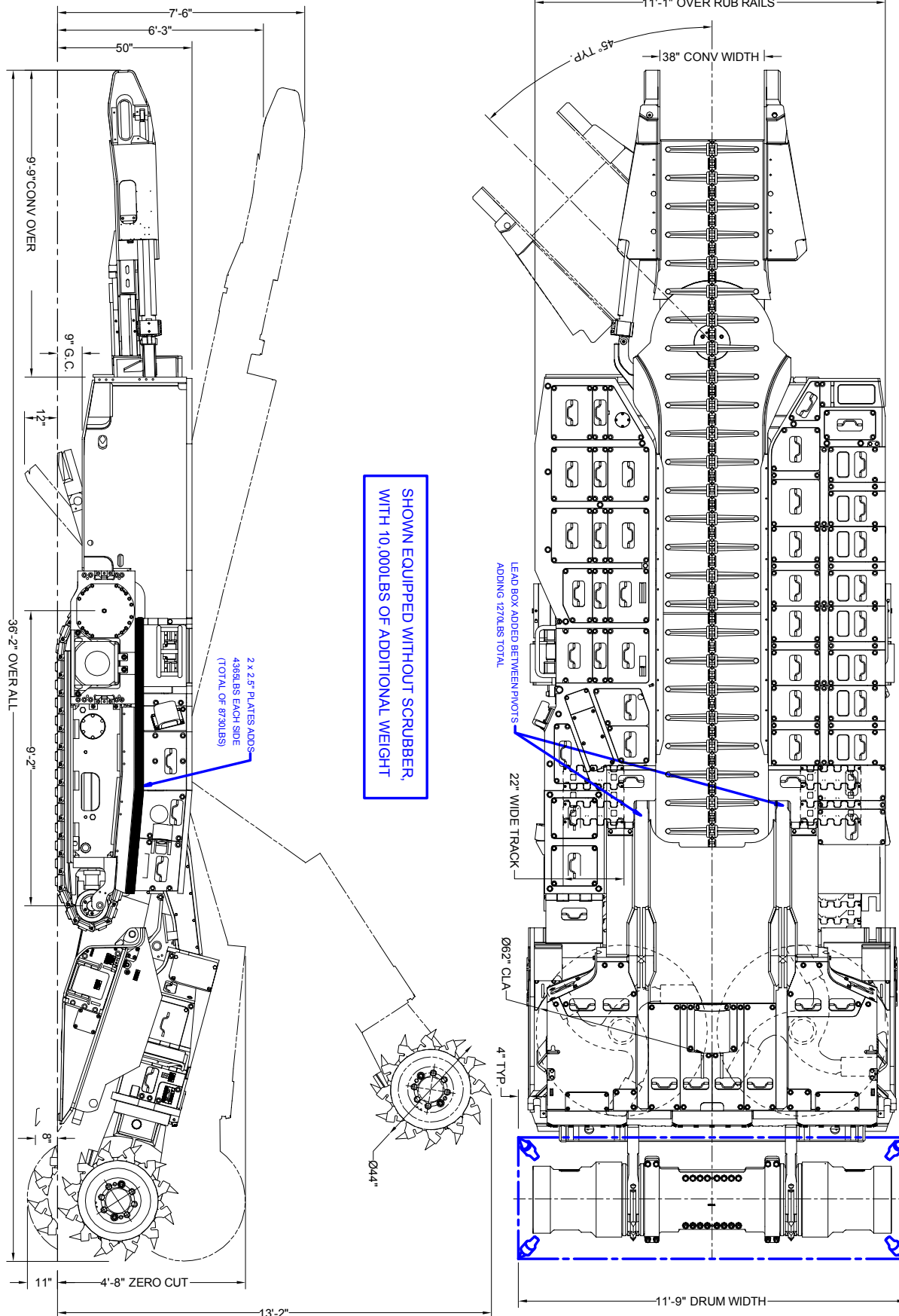
Crawler chain width	559 mm (22 in)
Ground pressure	.22 mP (32 psi) @ std. machine weight .23 mP (34 psi) @ optional machine weight
Crawler speed	0 - .43 m/s (0-75 fpm)
Traction horse power	2 x 37 kW DC (50 hp) continuous rating 2 x 56 kW (75 hp DC) one-hour rating

Electrical System

Machine voltage	995 VAC
Control system	processor based/ radio remote control



Continuous Miner—CM340



Continuous Miner—CM340

Hydraulic System

Hydraulic pump unit	Tandem gear pump/ 151 bar (2,200 psi)/open center valve
Horse power on hydraulic pump	2 x 41 kW (1 x 55 hp) continuous rating 2 x 48 kW (1 x 65 hp) one-hour rating

Dust Suppression

Scrubber type	none
Scrubber capacity	n/a

Total Installed Power

571 kW (765 hp) continuous rating (standard)
675 kW (905 hp) one hour rating (standard)
645 kW (865 hp) continuous rating (opt. cutter motors)
749 kW (1005 hp) one-hour rating (opt. cutter motors)

Continuous Miner—CM340

For more complete information on Cat products, dealer services, and industry solutions, visit us on the web at mining.cat.com and www.cat.com

© 2011 Caterpillar Inc.
All rights reserved

CAT, CATERPILLAR, their respective logos, "Caterpillar Yellow" and the "Power Edge" trade dress, as well as corporate and product identity used herein, are trademarks of Caterpillar and may not be used without permission.

AEHQ6579

