



Cat[®] CM230

Continuous Miner

Specifications

Operating Dimensions

Mining range (recommended)	1 219 - 2 438 mm (48 - 96 in)
Minimum height over cutting boom assembly	1 092 mm (43 in) (with 305 mm (12 in) ground clearance)
Maximum reach	2 934 mm (115.5 in) (1 118 mm (44 in) cutting drum and 305 mm (12 in) ground clearance)
Ground clearance	229 mm or 305 mm (9 or 12 in) (229 mm (12 in) requires 76 mm (3 in) lift kit installation)
Length rear bumper to bit tip	8 153 mm (26 ft 9 in) (with 1 118 mm (44 in) dia. cutting drum)

Transport Dimensions

Frame width (including rub rails)	3 190 mm (10 ft 5.75 in)
Overall length	11 010 mm (36 ft 1.5 in) (with 1 118 mm (44 in) dia. cutting drum)
Height over scrubber duct	991 mm (39 in)
Weight (total)	56.7 tonnes (125,000 lbs)

Cutting Unit

Cutting drum diameter	1 016 - 1 118 mm (40 - 44 in)
Cutting drum bit speed	597 fpm (57 rpm) 182 m/min (with 1 016 mm (40 in) dia. cutting drum)
Cutting drum width	3.53 m (11 ft 7 in)
Cutting drum power	2 x 149 kW (200 hp) (continuous rating) 2 x 164 kW (220 hp) (one-hour rating)
Optional cutting motor	2 x 186 kW (250 hp) (continuous rating)

Loading Unit

Loading method	3 to 6 finger cla
Conveyor width	914 mm (36 in)
Conveyor speed	475 fpm (145 m/min)
Conveyor depth	152 - 305 mm (6 - 12 in)
Loading capacity	18 - 23 tonnes/min (20 - 25 tons/min)
Conveyor power through cla's	2 x 34 kW (45 hp) (continuous rating) 2 x 41 kW (55 hp) (one-hour rating)

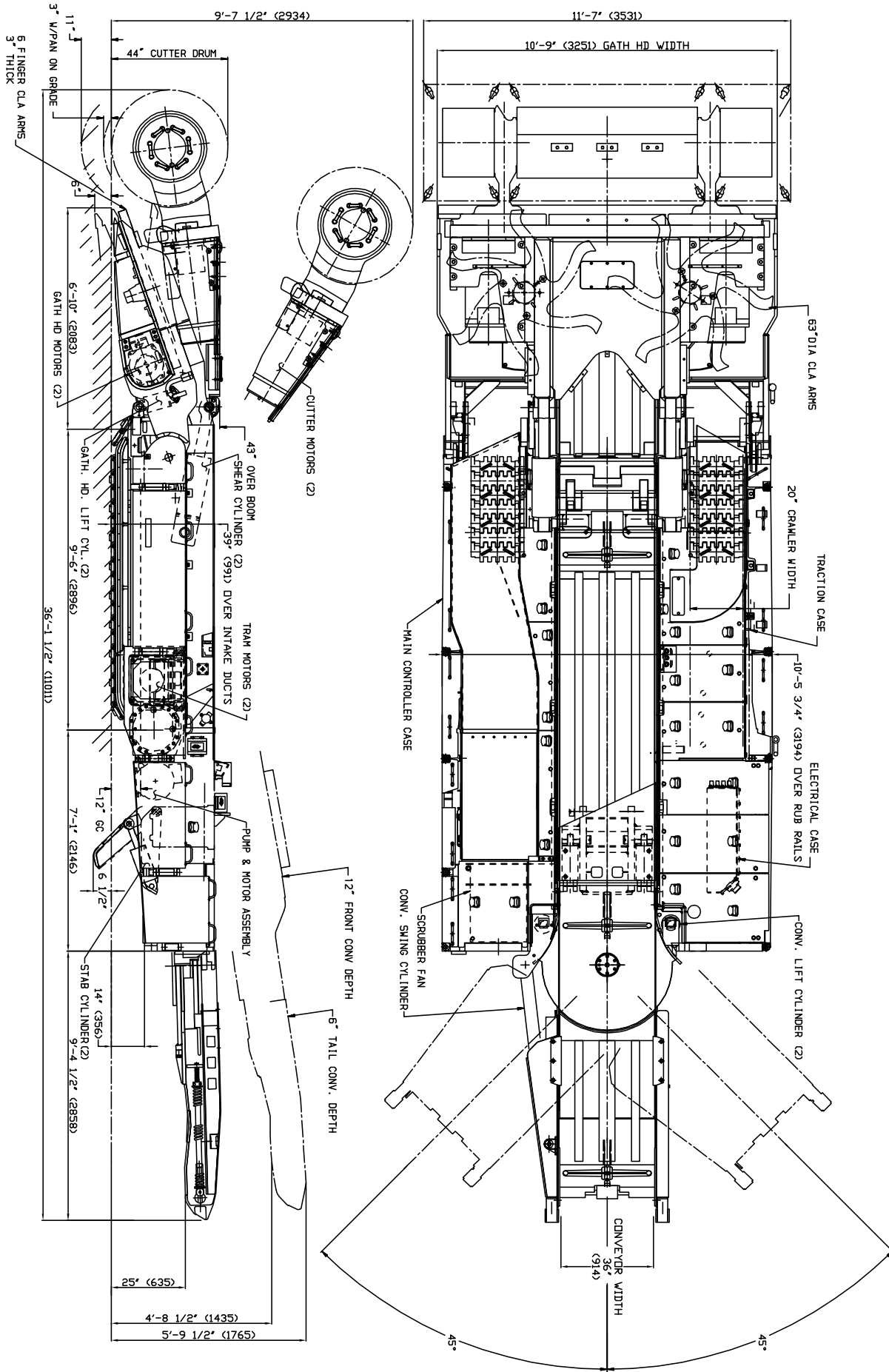
Traction Units

Crawler chain width	508 mm (20 in)
Crawler assebley length	2 900 mm (9 ft 6 in)
Ground pressure	188 kPa (27.3 psi)
Crawler speed	0 - 23 m/min (0 to 75 fpm) (with heavy-duty crawler system)
Traction power	2 x 37 kW (50 hp) DC (continuous rating) 2 x 45 kW (60 hp) DC (one-hour rating)

Electrical System

Machine voltage	950 VAC
Control system	Processor based/ radio remote control

Continuous Miner—CM230



Continuous Miner—CM230

Hydraulic System

Hydraulic pump unit	Tandem gear pump 220 bars (3,200 psi)
Hydraulic pump power	1 x 34 kW (45 hp) (continuous rating) 1 x 41 kW (55 hp) (one-hour rating)

Optional Dust Suppression

Scrubber type	Wet bed
Scrubber capacity	2.8 to 3.8 cms (6,000 to 8,000 cfm) 22 kW (30 hp)

Total Installed Power

474 kW (635 hp) (continuous rating w/o scrubber)
541 kW (725 hp) (one hour rating w/o scrubber)

Continuous Miner—CM230

For more complete information on Cat products, dealer services, and industry solutions, visit us on the web at mining.cat.com and www.cat.com

© 2012 Caterpillar Inc.
All rights reserved

CAT, CATERPILLAR, their respective logos, "Caterpillar Yellow" and the "Power Edge" trade dress, as well as corporate and product identity used herein, are trademarks of Caterpillar and may not be used without permission.

AEHQ6609

