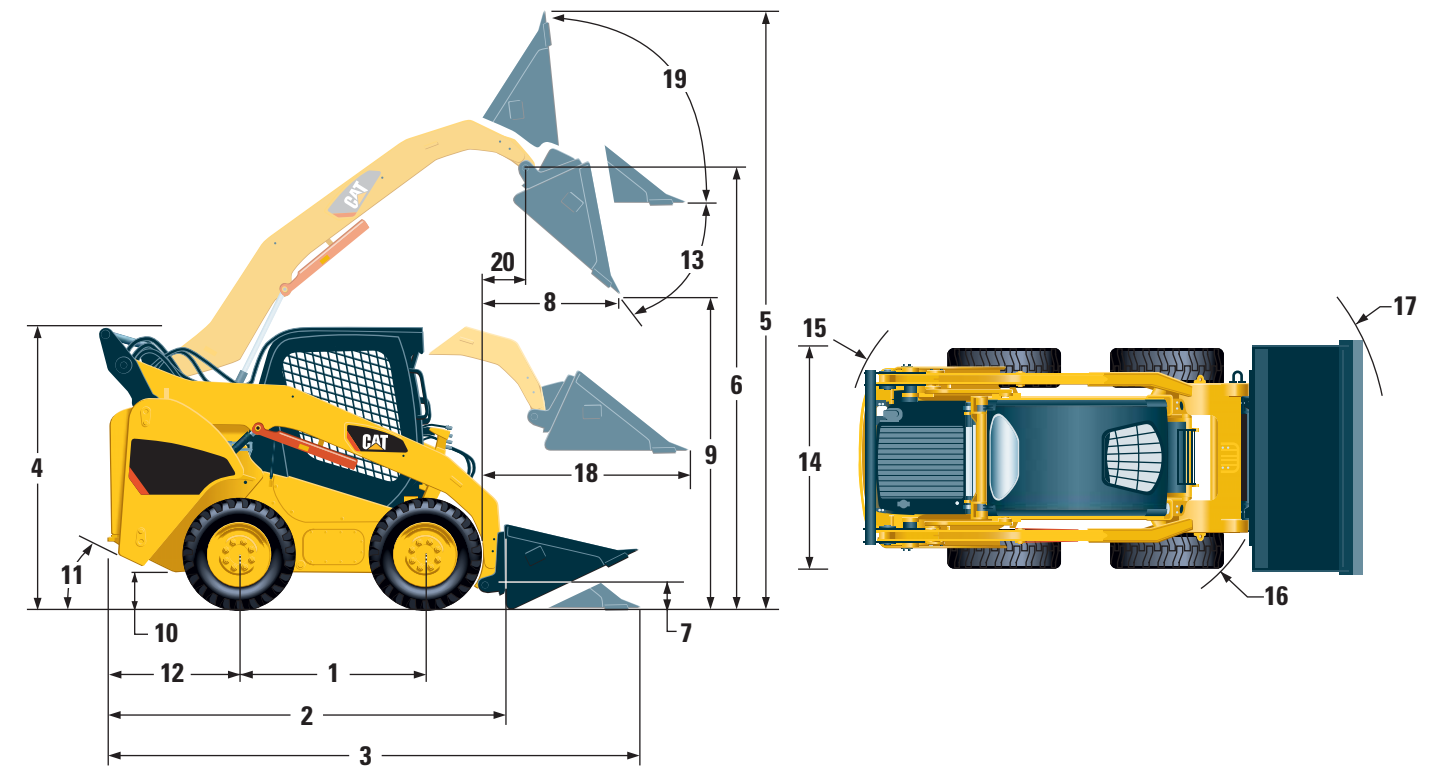


262C Series 2 Skid Steer Loader

Dimensions



262C Series 2		
1	Wheelbase	1240 mm 48.8 in
2	Length w/o Bucket	2979 mm 117.3 in
3	Length w/Bucket on Ground	3692 mm 145.4 in
4	Height to Top of Cab	2104 mm 82.8 in
5	Max. Overall Height	4075 mm 160.4 in
6	Bucket Pin Height at Max. Lift	3233 mm 127.3 in
7	Bucket Pin Height at Carry Position	200 mm 7.8 in
8	Reach at Max. Lift and Dump	781 mm 30.7 in
9	Clearance at Max. Lift and Dump	2450 mm 96.4 in
10	Ground Clearance	225 mm 8.8 in
11	Departure Angle	26°
12	Bumper Overhang Behind Rear Axle	1089 mm 42.8 in
13	Maximum Dump Angle	50°
14	Vehicle Width over Tires	1676 mm 66.0 in
15	Turning Radius from Center – Machine Rear	1730 mm 68.1 in
16	Turning Radius from Center – Coupler	1386 mm 54.6 in
17	Turning Radius from Center – Bucket	2167 mm 85.3 in
18	Max. Reach w/Arms Parallel to Ground	1283 mm 50.5 in
19	Rack Back Angle at Max. Height	85°
20	Bucket Pin Reach at Max. Lift	373 mm 14.7 in