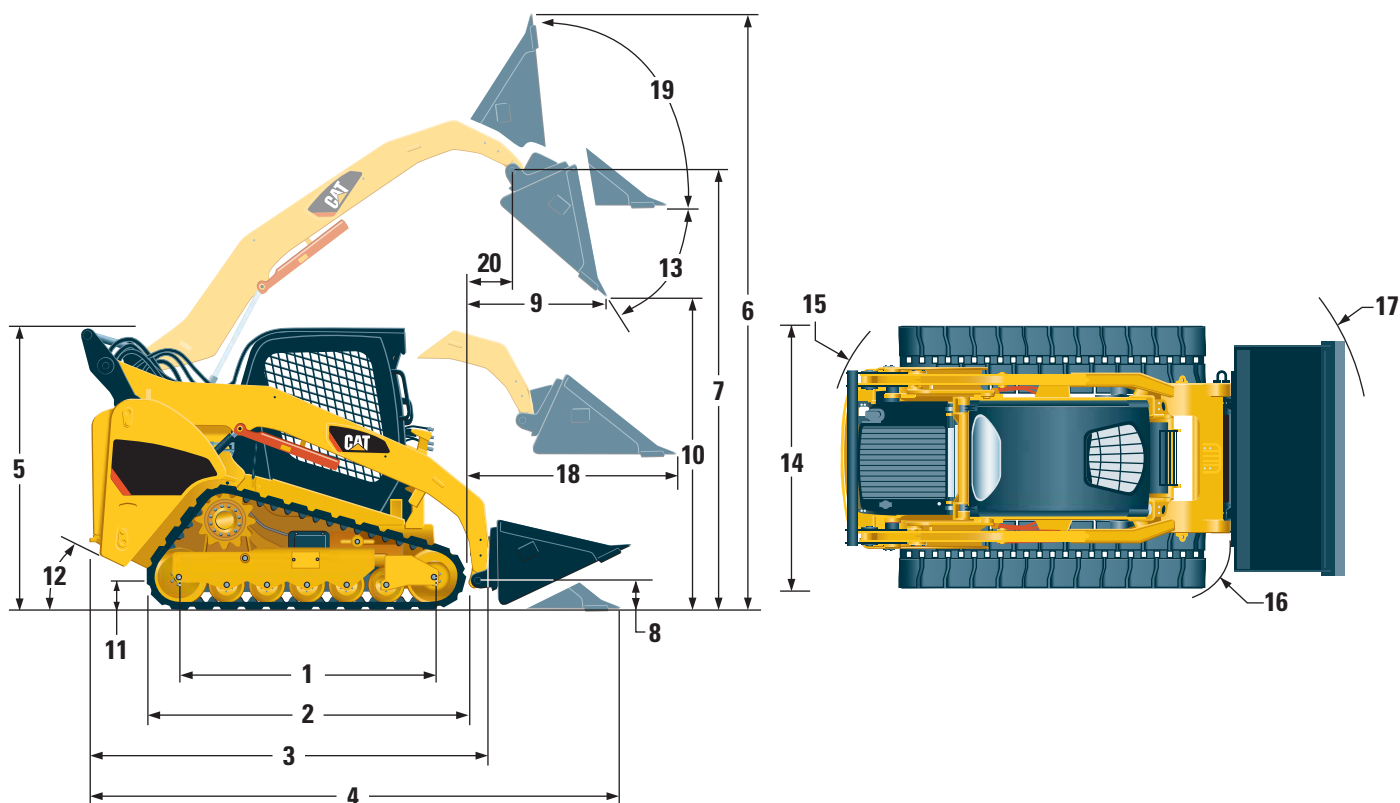


289C Series 2 Compact Track Loader

Dimensions



289C Series 2

1	Length of Track on Ground	1625 mm 64 in
2	Overall Length of Track	2129 mm 83.8 in
3	Length w/o Bucket	2960 mm 116.5 in
4	Length w/Bucket on Ground	3679 mm 144.8 in
5	Height to Top of Cab	2117 mm 83.3 in
6	Max. Overall Height	4081 mm 160.7 in
7	Bucket Pin Height at Max. Lift	3239 mm 127.5 in
8	Bucket Pin Height at Carry Position	195 mm 7.7 in
9	Reach at Max. Lift and Dump	781 mm 30.7 in
10	Clearance at Max. Lift and Dump	2456 mm 96.7 in
11	Ground Clearance	231 mm 9.1 in
12	Departure Angle	44°
13	Maximum Dump Angle	50°
14	Vehicle Width	1981 mm 78.0 in
15	Turning Radius from Center - Machine Rear	1762 mm 69.4 in
16	Turning Radius from Center - Coupler	1458 mm 57.4 in
17	Turning Radius from Center - Bucket	2238 mm 88.1 in
18	Max. Reach w/Arms Parallel to Ground	1282 mm 50.5 in
19	Rack Back Angle at Max. Height	85°
20	Bucket Pin Reach at Max. Lift	371 mm 14.6 in