

6060/6060 FS

Hydraulic Shovel



General Data

Operating Weight

Face Shovel	569 tonnes	627 tons
Backhoe	570 tonnes	628 tons
Engine output SAE J1995		
Cat® 3512C	2240 kW	3,000 hp
Standard bucket capacity		
Face Shovel (heaped 2:1)	34.0 m ³	44.5 yd ³
Backhoe (heaped 1:1)	34.0 m ³	44.5 yd ³

Features

- TriPower shovel attachment
- Independent oil-cooling system
- Spacious walk-through machine house
- 5-circuit hydraulic system
- On-board electronics system: Control and Monitoring Platform (CAMP)
- Board Control System (BCS)
- Torque control in closed-loop swing circuit
- Automatic central lubrication system
- LED working light

Operating Weight

6060 FS

Standard track pads	1400 mm	4 ft 7 in
Operating weight	568 900 kg	1,254,200 lb
Ground pressure	25.4 N/cm ²	36.8 psi

6060

Standard track pads	1400 mm	4 ft 7 in
Operating weight	570 300 kg	1,257,280 lb
Ground pressure	25.5 N/cm ²	37.0 psi

6060 AC FS

Standard track pads	1400 mm	4 ft 7 in
Operating weight	546 300 kg	1,204,370 lb
Ground pressure	24.4 N/cm ²	35.4 psi

6060 AC

Standard track pads	1400 mm	4 ft 7 in
Operating weight	547 700 kg	1,207,460 lb
Ground pressure	24.5 N/cm ²	35.6 psi

Other track pads available on request.

6060/6060 FS Hydraulic Shovel Specifications

Diesel Engines

Make and model	2 × Cat 3512C (Tier 2)	
Total rated net power ISO 3046/1	2240 kW 1,800 min ⁻¹	3,000 hp 1,800 min ⁻¹
Total rated net power SAE J1349	2240 kW 1,800 min ⁻¹	3,000 hp 1,800 min ⁻¹
Total rated gross power SAE J1995	2240 kW 1,800 min ⁻¹	3,000 hp 1,800 min ⁻¹
Number of cylinders (each engine)	12	
Bore	170 mm	6.69 in
Stroke	215 mm	8.46 in
Displacement	58.6 L	3,574 in ³
Aspiration	Turbocharged and charge air-cooled	

Maximum altitude without deration at 20° C (68° F) – above sea level	3000 m	9,800 ft
--	--------	----------

Emissions	U.S. EPA flex	
-----------	---------------	--

Alternators	2 × 150 A	
-------------	-----------	--

Fuel tank capacity	13 000 L	3,435 gal
--------------------	----------	-----------

- Hydraulically driven radiator fan with electronically controlled fan speed
- Microprocessed engine management
- Heavy-duty air filters
- Two-stage fuel filter including water separator
- Additional high-capacity water separator

Electric Motor – 6060 AC/6060 AC FS

Type	Squirrel cage induction motor	
Output	1800 kW	
Voltage	6.6 kV ± 10% (other on request)	
Rated Current I _N	194 A (at 6.6 kV)	
Frequency	50 Hz (60 Hz on request)	
Revolutions	1500 min ⁻¹ (1,800 min ⁻¹ at 60 Hz)	
Starting current	350% of I _N (197% of I _N Optional)	

Electrical System (diesel drive)

System voltage	24V	
Batteries in series/parallel installation	6 × 210 Ah – 12V each 630 Ah – 24V in total	
Working spot lights	8 × high brightness LED lights	

- Battery isolation relays and switches
- Emergency stop switches accessible from ground level and in engine module

Hydraulic System with Pump Managing System

Main pumps		
Diesel version	4 × swash plate double pumps	
AC version	4 × variable flow axial piston pumps	

Maximum oil flow		
Diesel version	4 × 1300 L/min	4 × 343 gal/min
AC version	4 × 933 L/min	4 × 246 gal/min

Maximum pressure, attachment	320 bar	4,640 psi
------------------------------	---------	-----------

Maximum pressure, travel	370 bar	5,365 psi
--------------------------	---------	-----------

Swing pumps		
Diesel version	4 × reversible swash plate pumps	
AC version	3 × reversible swash plate pumps	

Maximum oil flow		
Diesel version	4 × 352 L/min	4 × 93 gal/min
AC version	3 × 491 L/min	3 × 131 gal/min

Maximum pressure, swing pumps	370 bar	5,365 psi
-------------------------------	---------	-----------

Total volume of hydraulic oil		
Diesel version – approximately	9400 L	1,930 gal
AC version – approximately	7300 L	2,483 gal

Hydraulic tank capacity		
Diesel version – approximately	7100 L	1,876 gal
AC version – approximately	5100 L	1,320 gal

- Pump Managing System contains:
 - Electronic load limit control
 - Flow on demand from main pumps depending on joystick position
 - Automatic regulation of main pumps to zero flow without demand
 - Automatic rpm reduction of engine speed during working breaks
 - Reduced oil flow of main pumps at high hydraulic oil temperature or engine temperature
- Pressure cut-off for main pumps
- Cooling of pump transmission gear oil
- Filters:
 - Full-flow high-pressure filters (100 μm) for the main pumps, installed directly behind each pump
 - High pressure filters (200 μm) for the closed swing circuit
 - Full-flow filters (10 μm) for the complete return circuit
 - Pressure filters (40 μm and 6 μm) for servo circuit
 - Pressure filters (40 μm) for the feed pumps of the closed swing circuit
 - Transmission oil filters (40 μm)

6060/6060 FS Hydraulic Shovel Specifications

Hydraulic Oil Cooling

Oil flow of cooling pumps	4 × 488 L/min	4 × 129 gal/min
Diameter of fans	4 × 1170 mm	4 × 46 in

- Cooling system is fully independent of all main circuits, i.e. controlled cooling capacity is available whenever engine is running
- Gear-type cooling pumps supplying high-volume, low-pressure oil to fans and aluminum coolers
- Fan speed and flow of oil to the coolers are thermostatically controlled
- Extremely high cooling efficiency to ensure optimum oil temperature

Swing System

Swing drives	4 compact planetary transmissions with axial piston motors
Parking brakes	Wet multiple disc brake, spring loaded/hydraulically released
Maximum swing speed	3.8 rpm
Swing ring	Triple-race roller bearing with sealed internal gearing

- Closed-loop swing circuit with torque control
- Hydraulic braking of the swing motion by counteracting control
- All raceways of swing ring, as well as grease bath for internal gearing, supplied by automatic central lubrication system

Retractable Service Station

Retractable service station installed underneath the engine module and easily accessible from ground.

Equipped with:

- Quick couplings for:
 - Diesel fuel
 - Engine coolant – left/right
 - Pump transmission gear oil – left/right
 - Engine oil – left/right
 - Hydraulic oil tank
 - Grease container
- Cat jump-start socket
- Indicator lights for fuel tanks left/right full and grease container full

Operator's Cab

Operator's eye level – approximately	7.6 m	24 ft 11 in
Internal dimensions cab		
Length	2200 mm	7 ft 3 in
Width	1600 mm	5 ft 3 in
Height	2150 mm	7 ft 1 in

- Pneumatically cushioned and multi-adjustable comfort seat with lumbar support, safety belt, head and armrests
- Switch in seat cushion to automatically neutralize the hydraulic controls when operator leaves the seat
- Joystick controls integrated in independently adjustable seat consoles
- Fold-away auxiliary seat with safety belt
- FOPS (rock guard; approved according to DIN ISO 3449) integrated into cab structure
- All-round safety glass, armored windshield and sliding side window
- Windshield with parallel intermittent wiper/washer
- Roller blind at windshield
- Robust instrument panel including large colored BCS screen with transfective technology
- Board Control System (BCS) electronic monitoring and data logging system for vital signs and service data of engines, hydraulic system and lubrication system
- Machine access via retractable access stairway, stairway angle approximately 45°, hydraulically operated
- Sliding emergency ladder (kick-down type) with ladder cage

Undercarriage

Travel speeds (2 stage)		
1st stage – Maximum	1.4 km/h	0.87 mph
2nd stage – Maximum	2.0 km/h	1.24 mph
Maximum tractive force	2956 kN	664,300 lbf
Gradeability of travel drives – Maximum	52%	
Track pads (each side)	42	
Bottom rollers (each side)	7	
Support rollers (each side)	2 plus a skid plate in between	
Travel drives (each side)	1 planetary transmission with 2 two-stage axial piston motors	
Parking brakes	Wet multiple-disc brake, spring applied/hydraulically released	

- Cast double-grouser combined pad links with bushings connected by hardened full floating pins
- All running surfaces of sprockets, idlers, rollers and pad links, as well as teeth contact areas of sprocket and pad links, are hardened
- Bottom rollers are connected to the automatic lubrication system
- Fully hydraulic, self-adjusting track tensioning system with membrane accumulator
- Automatic hydraulic retarder valve to prevent over-speed on downhill travel
- Acoustic travel alarm

6060/6060 FS Hydraulic Shovel Specifications

Automatic Lubrication System

Capacity of grease container	1000 L	264 gal
------------------------------	--------	---------

- Dual-circuit system with hydraulically driven heavy-duty pumps and electronic time relay control to adjust the pause/lube times
- Connected to the main lubrication system are the swing roller bearing with internal gearing and all pivot points of attachment, bucket and cylinders
- A separate lube pump supplies lube to the bottom rollers of the undercarriage
- System failures displayed by Board Control System
- Grease filters (200 µm) between service station and container as well as directly behind grease pump

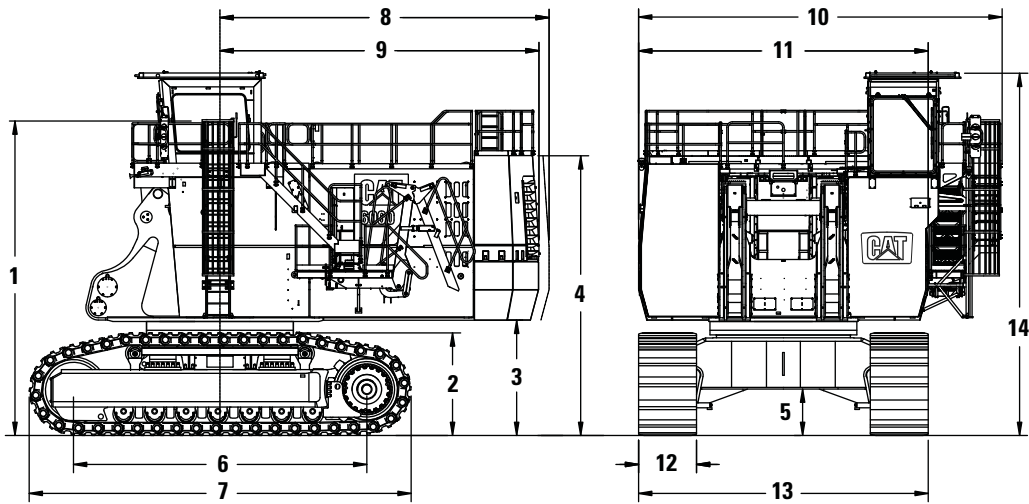
Attachments

- Booms and sticks are torsion-resistant, welded box design of high-tensile steel with massive steel castings at pivot areas
- Welding procedures allow for internal counter-welding (double prep weld) wherever possible
- Booms and sticks are stress-relieved after welding
- Catwalks with rails at booms
- Inspection holes in booms (FS and BH) and stick (FS only)
- Pressure-free lowering of boom (FS and BH) and stick (FS) by means of a float valve
- Shovel attachment with unique TriPower kinematics ensuring the following main features:
 - Horizontal automatic constant-angle bucket guidance
 - Vertical automatic constant-angle bucket guidance
 - Automatic roll-back limiter to prevent material spillage
 - Kinematic assistance to hydraulic forces
 - Constant boom momentum throughout the entire lift arc
 - Crowd force assistance
- All buckets (FS and BH) are equipped with a wear package consisting of:
 - Special liner material covering main wear areas inside and outside of bucket
 - Lip shrouds between teeth
 - Wing shrouds on side walls
 - Heel shrouds at bottom edges
- Special wear packages for highly abrasive materials on request

6060/6060 FS Hydraulic Shovel Specifications

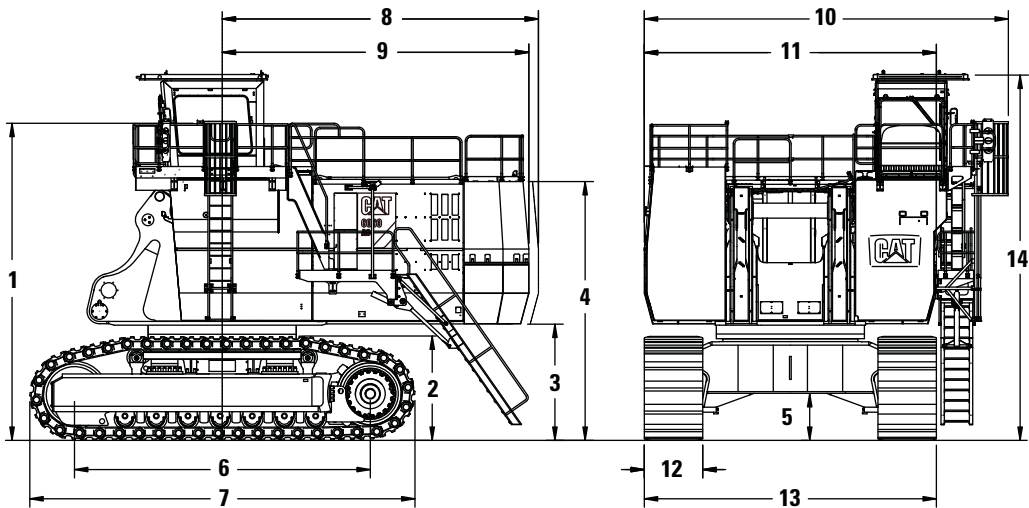
Dimensions

All dimensions are approximate.



6060/6060 FS Basic Unit

1	7600 mm	24 ft 11 in	8	7955 mm	26 ft 1 in
2	2500 mm	8 ft 2 in	9	7700 mm	25 ft 3 in
3	2790 mm	9 ft 2 in	10	8730 mm	26 ft 7 in
4	6460 mm	21 ft 3 in	11	7000 mm	23 ft 0 in
5	1120 mm	3 ft 8 in	12	1400 mm	4 ft 7 in
6	7090 mm	23 ft 3 in	13	7000 mm	23 ft 0 in
7	9230 mm	30 ft 3 in	14	8790 mm	28 ft 10 in



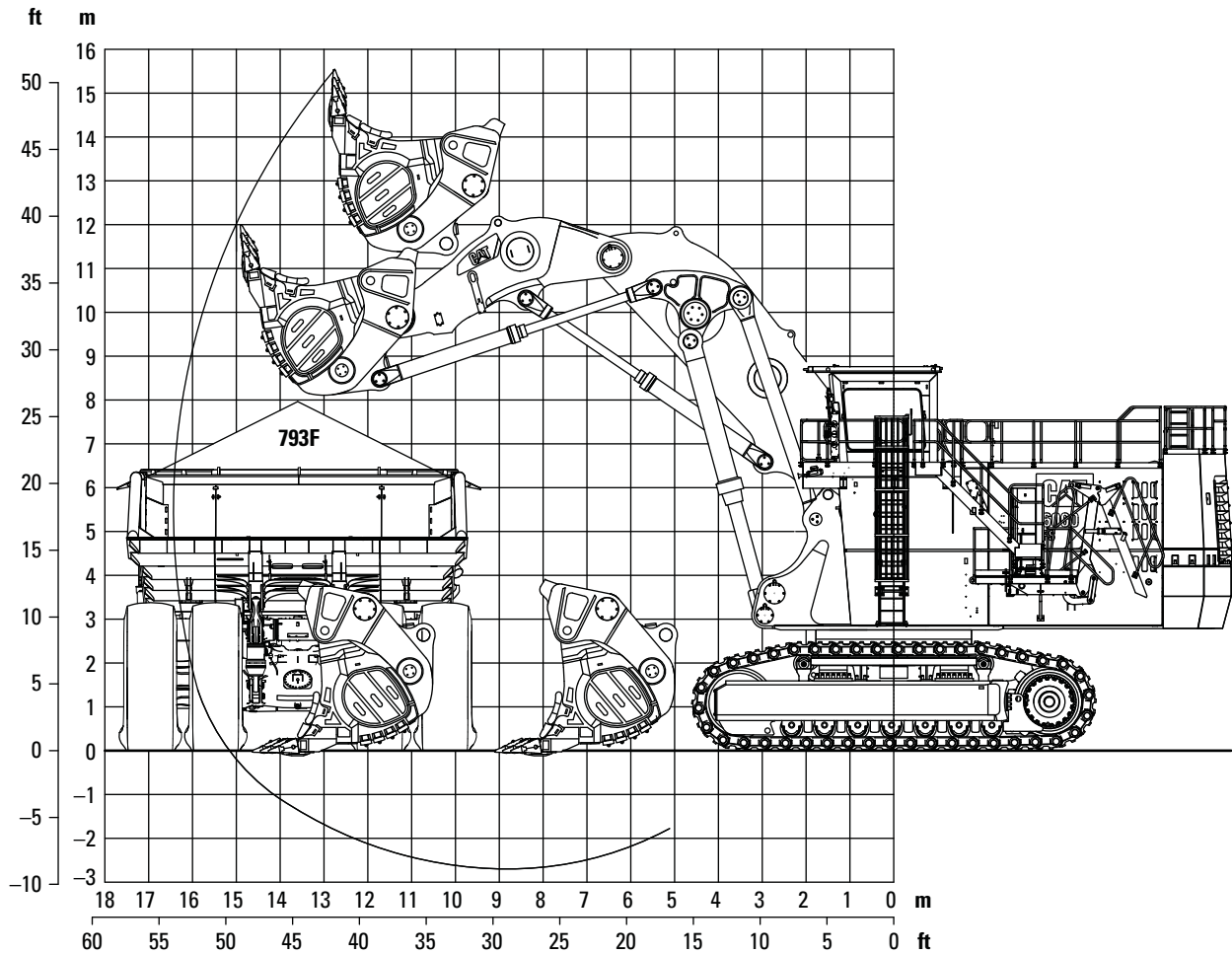
6060 AC/6060 AC FS Basic Unit

1	7600 mm	24 ft 11 in	8	7580 mm	24 ft 10 in
2	2500 mm	8 ft 2 in	9	7350 mm	24 ft 1 in
3	2790 mm	9 ft 2 in	10	8730 mm	28 ft 8 in
4	6200 mm	20 ft 4 in	11	7000 mm	23 ft 0 in
5	1120 mm	3 ft 8 in	12	1400 mm	4 ft 7 in
6	7090 mm	23 ft 3 in	13	7000 mm	23 ft 0 in
7	9230 mm	30 ft 3 in	14	8730 mm	28 ft 8 in

6060/6060 FS Hydraulic Shovel Specifications

Working Range – TriPower Face Shovel Attachment (FS)

All dimensions are approximate.



Boom	8.0 m	26 ft 2 in	Working Range		
Stick	5.1 m	16 ft 9 in	Maximum digging height	15.5 m	50 ft 10 in
Digging Forces			Maximum digging reach	16.4 m	53 ft 10 in
Maximum crowd force	2250 kN	505,640 lbf	Maximum digging depth	2.7 m	8 ft 10 in
Maximum crowd force at ground level	2100 kN	471,930 lbf	Maximum dumping height	11.6 m	38 ft 1 in
Maximum breakout force	1740 kN	391,030 lbf	Crowd distance on level	5.5 m	18 ft 1 in

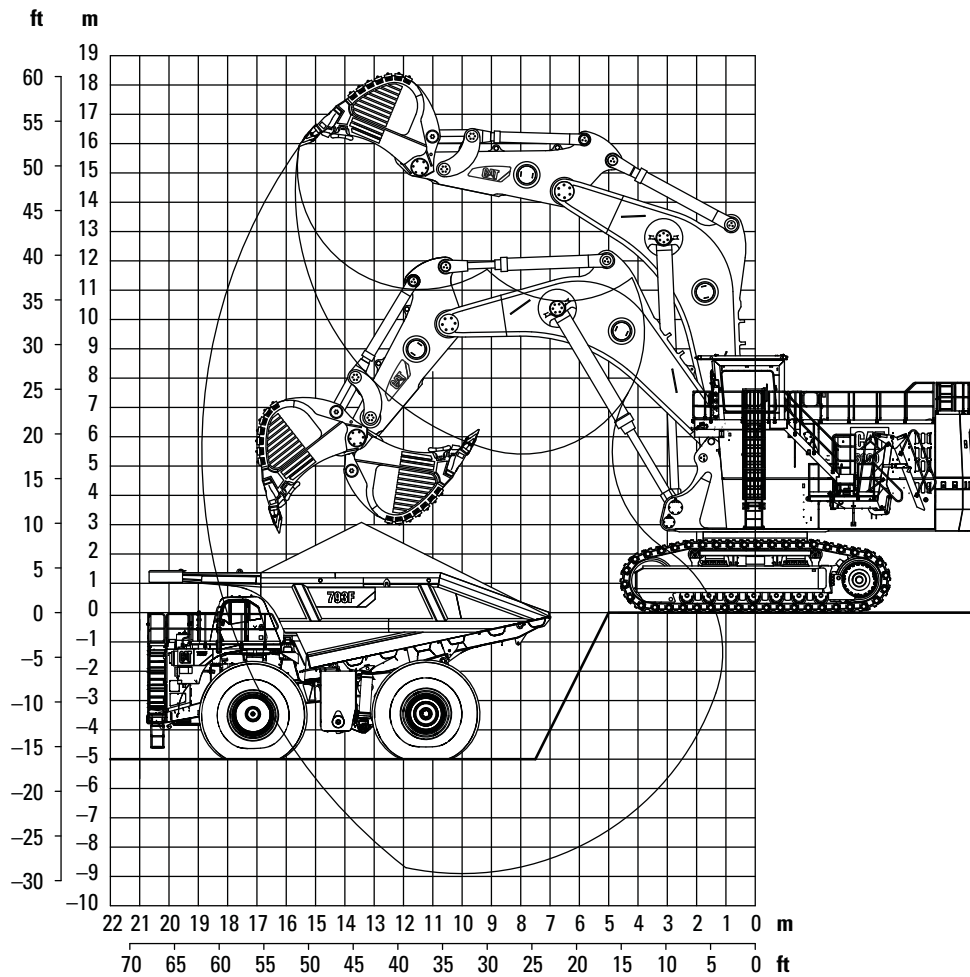
Face Shovels

Type	Iron Ore Shovel	Iron Ore Shovel	Heavy Rock Shovel	Heavy Rock Shovel	Standard Rock Shovel
Capacity heaped 1:1	24.5 m ³ (32.0 yd ³)	26.5 m ³ (34.7 yd ³)	32.5 m ³ (42.5 yd ³)	36.0 m ³ (47.1 yd ³)	39.5 m ³ (51.7 yd ³)
Capacity heaped 2:1	21.0 m³ (27.5 yd³)	23.0 m³ (30.1 yd³)	28.0 m³ (36.6 yd³)	31.0 m³ (40.5 yd³)	34.0 m³ (44.5 yd³)
Total width	4800 mm (15 ft 9 in)	4800 mm (15 ft 9 in)	4800 mm (15 ft 9 in)	5600 mm (18 ft 4 in)	5600 mm (18 ft 4 in)
Inner width	4300 mm (14 ft 1 in)	4300 mm (14 ft 1 in)	4300 mm (14 ft 1 in)	5100 mm (16 ft 9 in)	5100 mm (16 ft 9 in)
Opening width	2600 mm (8 ft 6 in)	2600 mm (8 ft 6 in)	2600 mm (8 ft 6 in)	2600 mm (8 ft 6 in)	2600 mm (8 ft 6 in)
Number of teeth	6	6	6	6	6
Weight including wear package	44 900 kg (98,990 lb)	44 300 kg (97,660 lb)	45 400 kg (100,090 lb)	50 800 kg (111,990 lb)	51 000 kg (112,430 lb)
Maximum material density (loose)	3.0 t/m ³ (5,060 lb/yd ³)	2.6 t/m ³ (4,380 lb/yd ³)	2.2 t/m ³ (3,710 lb/yd ³)	2.0 t/m ³ (3,370 lb/yd ³)	1.8 t/m ³ (3,030 lb/yd ³)

6060/6060 FS Hydraulic Shovel Specifications

Working Range – Backhoe Attachment (BH)

All dimensions are approximate.



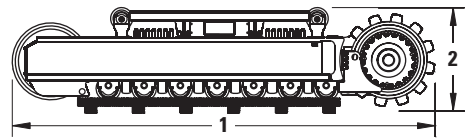
Boom	10.5 m	34 ft 5 in	Working Range	
Stick	5.0 m	16 ft 5 in	Maximum digging height	15.9 m 52 ft 2 in
Digging Forces			Maximum digging reach	18.9 m 62 ft 0 in
Maximum tearout force	1220 kN	274,170 lbf	Maximum digging depth	8.9 m 29 ft 2 in
Maximum breakout force	1240 kN	278,670 lbf		
Backhoes				
Type	Heavy Rock Bucket	Heavy Rock Bucket	Standard Rock Bucket	
Capacity heaped 1:1	25.0 m ³ (32.7 yd ³)	28.0 m ³ (36.6 yd ³)	34.0 m ³ (44.5 yd ³)	
Capacity heaped 2:1	22.2 m ³ (29.0 yd ³)	24.6 m ³ (32.3 yd ³)	30.3 m ³ (39.6 yd ³)	
Capacity struck	19.5 m ³ (25.5 yd ³)	21.2 m ³ (27.7 yd ³)	26.5 m ³ (34.7 yd ³)	
Total width	4360 mm (14 ft 4 in)	4360 mm (14 ft 4 in)	4700 mm (15 ft 5 in)	
Inner width	4035 mm (13 ft 3 in)	4040 mm (13 ft 3 in)	4300 mm (14 ft 1 in)	
Number of teeth	6	6	6	
Weight including wear package	32 400 kg (71,430 lb)	32 200 kg (70,990 lb)	34 400 kg (75,180 lb)	
Maximum material density (loose)	2.4 t/m ³ (4,050 lb/yd ³)	2.2 t/m ³ (3,710 lb/yd ³)	1.8 t/m ³ (3,030 lb/yd ³)	

6060/6060 FS Hydraulic Shovel Specifications

General Packing List

2 crawler side frames (values per each side frame)

Gross weight	49 000 kg (108,030 lb)
1 Length	9000 mm (29 ft 6 in)
Width	2100 mm (6 ft 11 in)
2 Height	2100 mm (6 ft 11 in)



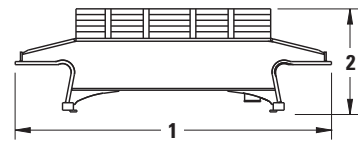
6 tracks consisting of 14 pad links (values per each track)

Gross weight	11 500 kg (25,350 lb)
1 Length	6900 mm (22 ft 8 in)
Width	1400 mm (4 ft 7 in)
2 Height	330 mm (1 ft 1 in)



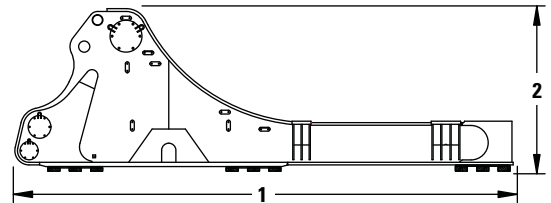
Undercarriage center frame with swing roller bearing

Gross weight	42 300 kg (93,250 lb)
1 Length	6750 mm (22 ft 2 in)
Width	3800 mm (12 ft 6 in)
2 Height	2250 mm (7 ft 5 in)



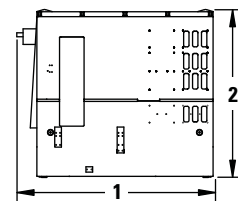
Superstructure center frame

Gross weight	62 400 kg (137,570 lb)
1 Length	10 500 mm (34 ft 5 in)
Width	3600 mm (11 ft 10 in)
2 Height	3450 mm (11 ft 4 in)



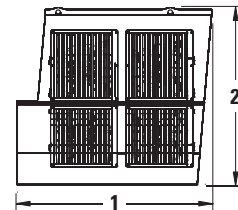
Engine module with diesel engines

Gross weight	55 000 kg (121,250 lb)
1 Length	4400 mm (14 ft 5 in)
Width	7000 mm (23 ft)
2 Height	3820 mm (12 ft 6 in)



Oil cooler module

Gross weight	9700 kg (21,380 lb)
1 Length	4100 mm (13 ft 5 in)
Width	2050 mm (6 ft 9 in)
2 Height	3850 mm (12 ft 8 in)



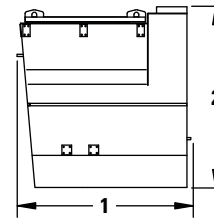
Above values are approximate. Details may vary depending on scope of supply and destination. Exact data subject to selected machine configuration and final packing list.

6060/6060 FS Hydraulic Shovel Specifications

General Packing List

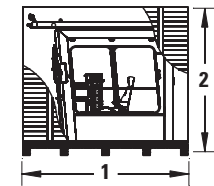
Cab pedestal module

Gross weight	7100 kg (15,650 lb)
1 Length	3700 mm (12 ft 2 in)
Width	2700 mm (8 ft 10 in)
2 Height	3720 mm (12 ft 2 in)



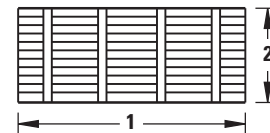
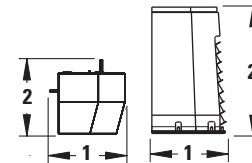
Crate with cabin and FOPS

Gross weight	3960 kg (8,730 lb)
1 Length	3500 mm (11 ft 6 in)
Width	2600 mm (8 ft 6 in)
2 Height	2870 mm (9 ft 5 in)



Counterweight

	Lower part	Upper part
Gross weight	36 400 kg (80,250 lb)	19 900 kg (43,870 lb)
1 Length	1580 mm (5 ft 2 in)	1550 mm (5 ft 1 in)
Width	7000 mm (23 ft)	7000 mm (23 ft)
2 Height	1750 mm (5 ft 9 in)	2700 mm (8 ft 10 in)



Crates

Content	1 Length	Width	2 Height	Gross Weight
Two radiators with fan	3000 mm (9 ft 10 in)	1950 mm (6 ft 5 in)	1700 mm (5 ft 7 in)	2440 kg (5,380 lb)
Four swing gear	1550 mm (5 ft 1 in)	1350 mm (4 ft 5 in)	1960 mm (6 ft 5 in)	4970 kg (10,960 lb)
Swing ring cover	2200 mm (7 ft 3 in)	1300 mm (4 ft 3 in)	1120 mm (3 ft 8 in)	400 kg (880 lb)
Bolts, tools, accessories, etc.	3300 mm (10 ft 10 in)	1750 mm (5 ft 9 in)	1270 mm (4 ft 2 in)	3500 kg (7,720 lb)
Catwalks, handrails and other parts	5000 mm (16 ft 5 in)	1950 mm (6 ft 5 in)	1850 mm (6 ft 1 in)	3400 kg (7,500 lb)
Catwalks, handrails, hoses, etc.	4500 mm (14 ft 9 in)	1900 mm (6 ft 3 in)	1750 mm (5 ft 9 in)	3950 kg (8,710 lb)
Grease container with pump	1700 mm (5 ft 7 in)	1370 mm (4 ft 6 in)	2060 mm (6 ft 9 in)	1200 kg (2,650 lb)
Air filter housings	3400 mm (11 ft 2 in)	1700 mm (5 ft 7 in)	1800 mm (5 ft 11 in)	960 kg (2,120 lb)
Mufflers	3400 mm (11 ft 2 in)	1700 mm (5 ft 7 in)	1800 mm (5 ft 11 in)	1000 kg (2,200 lb)
Battery isolation	1480 mm (4 ft 10 in)	1420 mm (4 ft 8 in)	940 mm (3 ft 1 in)	390 kg (860 lb)
Retractable ladder (on pallet)	6000 mm (19 ft 8 in)	1000 mm (3 ft 3 in)	2730 mm (8 ft 11 in)	1870 kg (4,120 lb)
Emergency ladder, handrails	5570 mm (18 ft 3 in)	2200 mm (7 ft 3 in)	2300 mm (7 ft 7 in)	1570 kg (3,460 lb)
Barrels (hydraulic oil)	2500 mm (8 ft 2 in)	1300 mm (4 ft 3 in)	1270 mm (4 ft 2 in)	1760 kg (3,880 lb)
Barrels (hydraulic oil; antifreeze; grease)	2500 mm (8 ft 2 in)	1300 mm (4 ft 3 in)	1270 mm (4 ft 2 in)	1700 kg (3,750 lb)

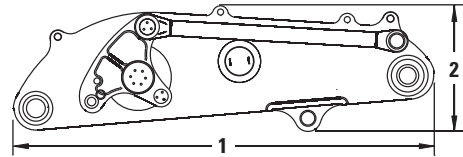
Above values are approximate. Details may vary depending on scope of supply and destination.
Exact data subject to selected machine configuration and final packing list.

6060/6060 FS Hydraulic Shovel Specifications

General Packing List – TriPower Shovel Attachment

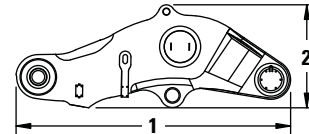
Boom with TriPower linkages and rods

Gross weight	40 000 kg (88,180 lb)
1 Length	9000 mm (29 ft 6 in)
Width	3050 mm (10 ft)
2 Height	3200 mm (10 ft 6 in)



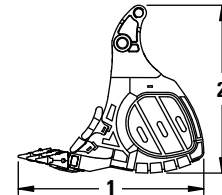
Stick

Gross weight	16 300 kg (35,930 lb)
1 Length	6100 mm (20 ft)
Width	2300 mm (7 ft 7 in)
2 Height	2350 mm (7 ft 9 in)



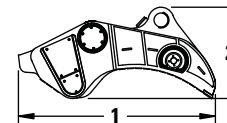
Front clam of standard face shovel

Gross weight	26 900 kg (59,300 lb)
1 Length	3950 mm (13 ft)
Width	5700 mm (18 ft 8 in)
2 Height	3550 mm (11 ft 8 in)



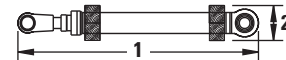
Backwall of standard face shovel

Gross weight	25 400 kg (56,000 lb)
1 Length	4200 mm (13 ft 9 in)
Width	5200 mm (17 ft 1 in)
2 Height	2000 mm (6 ft 7 in)



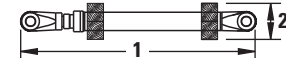
2 Bundles with 1 boom cylinder (values per each bundle)

Gross weight	4140 kg (9,130 lb)
1 Length	5100 mm (16 ft 9 in)
Width	500 mm (1 ft 8 in)
2 Height	800 mm (2 ft 7 in)



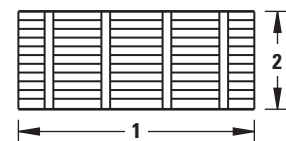
2 Bundles with 2 stick cylinders and 2 bucket cylinders (values per each bundle)

Gross weight	5200 kg (11,460 lb)
1 Length	4550 mm (14 ft 11 in)
Width	1200 mm (3 ft 11 in)
2 Height	800 mm (2 ft 7 in)



Crate with main valve block

1 Length	Width	2 Height	Gross Weight
4000 mm (13 ft 1 in)	2250 mm (7 ft 5 in)	1950 mm (6 ft 5 in)	7330 kg (16,160 lb)



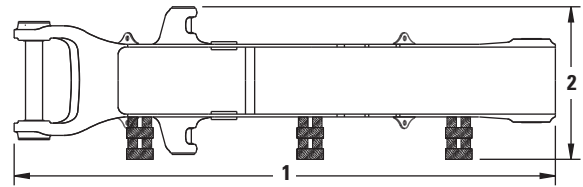
Above values are approximate. Details may vary depending on scope of supply and destination. Exact data subject to selected machine configuration and final packing list.

6060/6060 FS Hydraulic Shovel Specifications

General Packing List – Backhoe Attachment

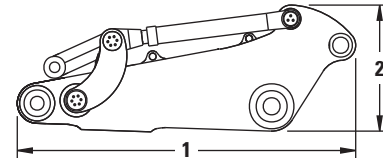
Monoboom with main valve block

Gross weight	42 800 kg (94,360 lb)
1 Length	11 500 mm (37 ft 9 in)
Width	5000 mm (16 ft 5 in)
2 Height	3200 mm (10 ft 6 in)



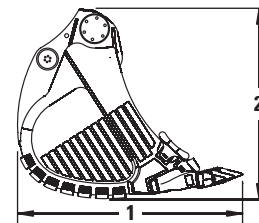
Stick with linkage and bucket cylinder

Gross weight	28 800 kg (63,490 lb)
1 Length	7200 mm (23 ft 7 in)
Width	2300 mm (7 ft 7 in)
2 Height	2850 mm (9 ft 4 in)



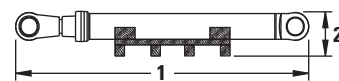
Standard backhoe including pins for stick and linkage

Gross weight	36 000 kg (79,370 lb)
1 Length	4750 mm (15 ft 7 in)
Width	4800 mm (15 ft 9 in)
2 Height	4000 mm (13 ft 1 in)



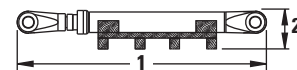
2 pallets with 1 boom cylinder (values per each pallet)

Gross weight	6700 kg (14,770 lb)
1 Length	6250 mm (20 ft 6 in)
Width	800 mm (2 ft 7 in)
2 Height	850 mm (2 ft 9 in)



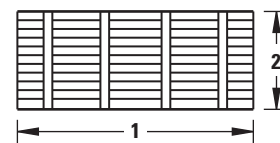
2 pallets with 1 stick cylinder (values per each pallet)

Gross weight	4200 kg (9,260 lb)
1 Length	5200 mm (17 ft 1 in)
Width	800 mm (2 ft 7 in)
2 Height	930 mm (3 ft 1 in)



Crate with main valve block

1 Length	Width	2 Height	Gross Weight
5990 mm (18 ft 3 in)	2400 mm (7 ft 10 in)	2150 mm (7 ft 1 in)	6700 kg (14,770 lb)

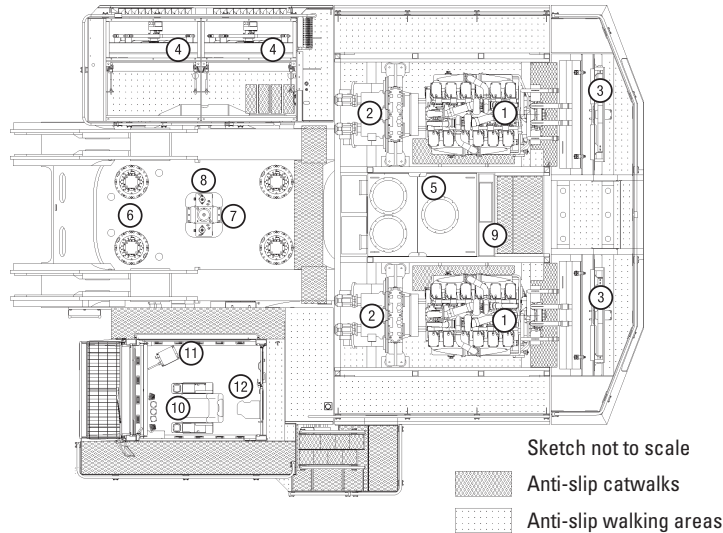


Above values are approximate. Details may vary depending on scope of supply and destination. Exact data subject to selected machine configuration and final packing list.

6060/6060 FS Hydraulic Shovel

Component Accessibility on Superstructure

- | | | | |
|---|-------------------|-----------------------------------|---------------------|
| 1. Diesel Engines | 4. Oil coolers | 7. Rotary distributor | 10. Operator's seat |
| 2. Gearboxes with hydraulic pumps | 5. Hydraulic tank | 8. Travel valves | 11. BCS tower |
| 3. Engine radiators with hydraulically driven fan | 6. Swing drives | 9. Switch cabinet and battery box | 12. Auxiliary seat |



Optional Equipment

Optional equipment may vary. Consult your Cat dealer for details.

GENERAL

- Export crating
- Finishing as per end user's corporate colors

SUPERSTRUCTURE

- Hydraulic service crane on superstructure with auxiliary engine
- Round container with a standard 200 L (53 gal) grease barrel (instead of 1000 L (264 gal) grease container)

Additional optional equipment available on request.

- Lubricated pinion for greasing of internal gearing of swing ring
- Various cold-weather packages

CAB

- Various heating and air-conditioning systems
- Roller blinds at all windows

UNDERCARRIAGE

- Track pad width 1600 mm (5 ft 3 in) or 1800 mm (5 ft 11 in)
- Cover plate under carbody (belly plate)

ATTACHMENT

- Guards for shovel cylinders of FS-attachment
- LED lighting on boom
- Special wear packages

Materials and specifications are subject to change without notice.

Featured machines in photos may include additional equipment.

For more complete information on Cat products, dealer services, and industry solutions, visit us on the web at www.cat.com.

© 2013 Caterpillar Inc.
All Rights Reserved.

CAT, CATERPILLAR, SAFETY.CAT.COM, their respective logos, "Caterpillar Yellow" and the "Power Edge" trade dress, as well as corporate and product identity used herein, are trademarks of Caterpillar and may not be used without permission.

Product ID: 6060/6060 FS

AEHQ6526-02
Replaces AEHQ6526-01

August 2013

