

IT14G2 Integrated Toolcarrier

IT14G2 Operating Specifications

		General Purpose Buckets						Penetration Buckets
		With Bolt-On Cutting Edge		With Bolt-On Teeth		With Bolt-On Teeth and Segments		With Flush Mounted Teeth
Rated bucket capacity (§)	m ³	1.3	1.4	1.2	1.3	1.3	1.4	1.3
	yd ³	1.7	1.8	1.6	1.7	1.7	1.8	1.7
Struck capacity (§)	m ³	1.1	1.2	1.0	1.1	1.1	1.2	1.1
	yd ³	1.4	1.5	1.3	1.5	1.4	1.5	1.5
Width	mm	2401	2401	2424	2424	2424	2424	2434
	ft/in	7'10.5"	7'10.5"	7'11.4"	7'11.4"	7'11.4"	7'11.4"	7'11.8"
Dump clearance at full lift and 45° discharge (§)	mm	2921	2886	2977	2942	2930	2895	2942
	ft/in	9'7"	9'6"	9'9"	9'8"	9'7"	9'6"	9'8"
Reach at full lift and 45° discharge (§)	mm	787	823	757	792	779	814	792
	ft/in	2'7"	2'8"	2'6"	2'7"	2'7"	2'8"	2'7"
Reach at 45° discharge and 2130 mm (7 ft) clearance (§)	mm	1426	1443	1351	1368	1375	1390	1380
	ft/in	4'8"	4'9"	4'5"	4'6"	4'6"	4'7"	4'6"
Reach with lift arms horizontal and bucket level	mm	2151	2201	2090	2140	2139	2189	2140
	ft/in	7'1"	7'3"	6'10"	7'0"	7'0"	7'2"	7'0"
Digging depth (§)	mm	174	174	155	155	174	174	155
	in	6.9"	6.9"	6.1"	6.1"	6.9"	6.9"	6.1"
Overall length	mm	6424	6474	6506	6556	6524	6574	6554
	ft/in	21'1"	21'3"	21'4"	21'6"	21'5"	21'7"	21'6"
Overall height with bucket at full raise (§)	mm	4802	4855	4802	4855	4802	4855	4855
	ft/in	15'9"	15'11"	15'9"	15'11"	15'9"	15'11"	15'11"
Loader clearance circle with bucket in carry position	m	10.40	10.42	10.47	10.50	10.47	10.50	10.49
	ft/in	34'1"	34'2"	34'4"	34'5"	34'4"	34'5"	34'5"
Static tipping load straight* (§)	kg	5541	5495	5637	5589	5503	5456	5605
	lb	12,218	12,116	12,407	12,324	12,134	12,030	12,359
Static tipping load full 40° turn* (§)	kg	4792	4750	4882	4840	4754	4712	4855
	lb	10,566	10,474	10,765	10,672	10,483	10,390	10,705
Breakout force (§)	kg	7865	7435	8456	7965	7920	7481	7979
	lb	17,342	16,394	18,645	17,563	17,464	16,496	17,594
Operating weight*	kg	8032	8044	7990	8003	8063	8076	7990
	lb	17,771	17,737	17,618	17,647	17,779	17,808	17,618

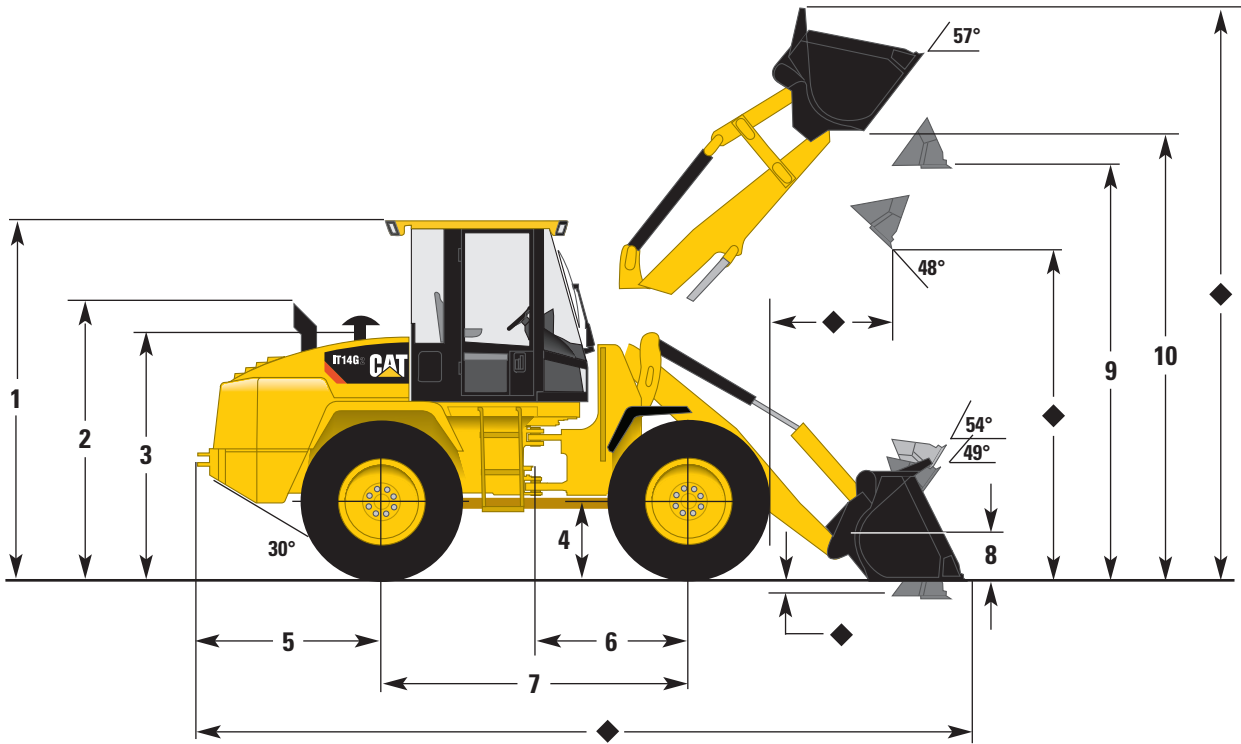
*Static tipping and operating weights shown are for high-speed version IT14G2 and include lubricants, full fuel tank, ROPS cab, 80 kg (176 lb) operator, standard 250 kg (550 lb) counterweight and 17.5-R25 (L2 equivalent) tires.

NOTE: Specifications and ratings conform to all applicable standards recommended by the Society of Automotive Engineers (SAE). SAE Standards J732 and J742 govern loader rating, denoted in the text by (§).

IT14G2 Integrated Toolcarrier

IT14G2 Dimensions with Bucket

All dimensions are approximate.



	mm	ft/in
1	3100	10'2"
2	2255	7'5"
3	2080	6'10"
4	620	2'0"
5	1658	5'5"
6	1300	4'3"
7	2600	8'6"
8	374	1'3"
9	3565	11'8"
10	3798	12'6"

◆ Dimensions vary with bucket. Refer to Operating Specifications chart on previous page.

		Tread Width	Width over Tires	Ground Clearance	Change in Vertical Dimensions
15.5-25, 12PR (L-2)	mm	1800	2223	414	-42
	in	70.9	87.5	16.3	-1.7
17.5-R25 (L-2 equivalent)	mm	1800	2298	456	—
	in	70.9	90.5	18.0	—

IT14G2 Integrated Toolcarrier

IT14G2 Supplemental Specifications

	Change in Operating Weight		Change in Articulated Static Tipping Load	
	kg	lb	kg	lb
Air conditioner	+55	+121	+62	+137
Canopy, ROPS (less cab)	-122	-269	-89	-196
Ride control	+28	+62	+5	+11
Power train guard	+17	+37	+15	+33
Secondary steering	+30	+66	+38	+84
Tires and rims, 15.5-25, 12PR (L-2)	-140	-309	-84	-185
Tires and rims, 15.5-25, 12PR (L-3)	-76	-168	-46	-101
Tires and rims, 17.5-25, 12PR (L-2)	-40	-88	-21	-46
Tires and rims, 17.5-25, 12PR (L-3)	+32	+71	+17	+37
Tires and rims, 17.5-25, R25 (L-3 equivalent)	+100	+220	+54	+119
Tires and rims, 17.5-25, R25 (L-2/L-3 equivalent)	+76	+168	+41	+90

Static tipping load changes are for an IT14G2 with lubricants, full fuel tank, ROPS cab, 80 kg (176 lb) operator, standard 250 kg (550 lb) counterweight, 17.5-R25 L-2 equivalent tires and a 1.3 m³ (1.7 yd³) general purpose bucket with bolt-on cutting edge.

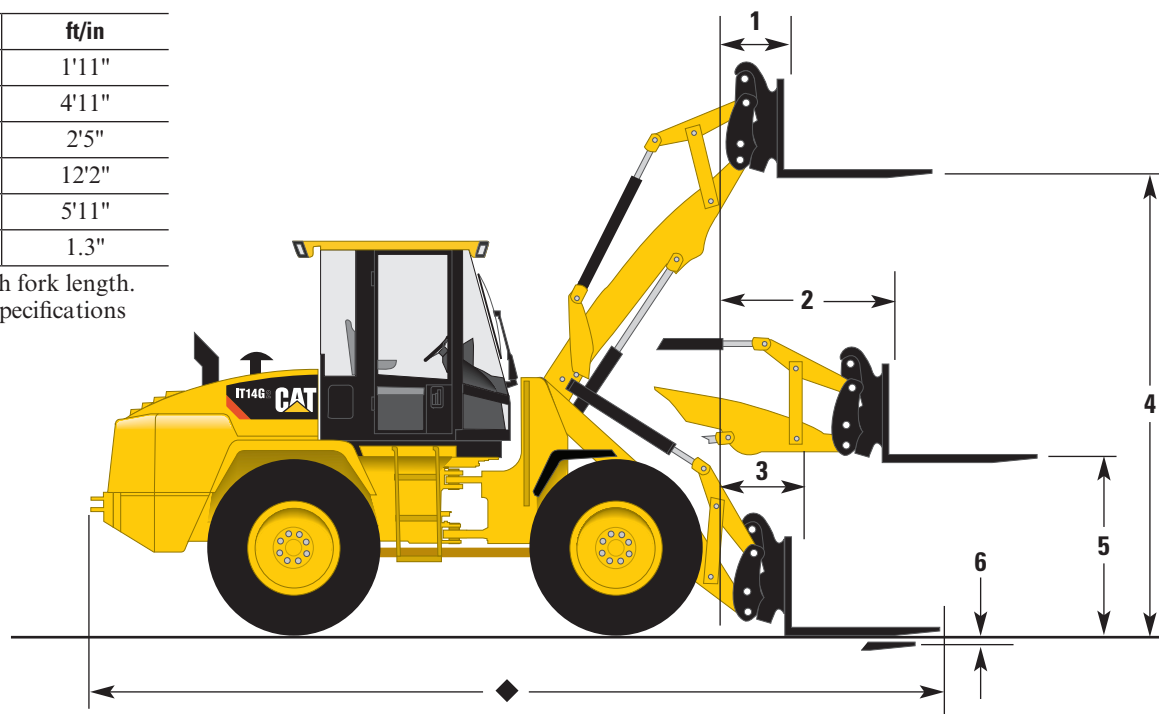
IT14G2 Integrated Toolcarrier

IT14G2 Dimensions with Forks

All dimensions are approximate.

	mm	ft/in
1	586	1'11"
2	1490	4'11"
3	745	2'5"
4	3708	12'2"
5	1808	5'11"
6	34	1.3"

◆ Dimensions vary with fork length. Refer to Operating Specifications chart below.



IT14G2 Operating Specifications with Forks

Fork Tine Length		1050 mm (3'5")	1200 mm (3'11")	1350 mm (4'5")
Operating load:				
Per SAE J1197 FEB91 (50% of full turn static tipping load)	kg	1927	1870	1810
	lb	4,249	4,123	3,991
Per CEN 474-3, rough terrain (60% of full turn static tipping load)	kg	2312	2244	2172
	lb	5,098	4,948	4,789
Per CEN 474-3, firm and level ground (80% of full turn static tipping load)	kg	3082	2992	2896
	lb	6,796	6,597	6,386
Overall length	mm	6723	6873	7023
	ft/in	22'1"	22'7"	23'1"
Load center	mm	525	600	675
	in	21"	24"	27"
Static tipping load with level arms and forks, 600 mm (23.6 in) load center, straight*	kg	4447	4309	4179
	lb	9,806	9,501	9,215
Static tipping load with level arms and forks, 600 mm (23.6 in) load center, full 40° turn*	kg	3853	3734	3620
	lb	8,496	8,233	7,982
Operating weight*	kg	7898	7915	7928
	lb	17,415	17,453	17,481

*Static tipping and operating weights shown are for an IT14G2 with lubricants, full fuel tank, ROPS cab, 80 kg (176 lb) operator, standard 250 kg (550 lb) counterweight and 17.5-R25 (L2 equivalent) tires.

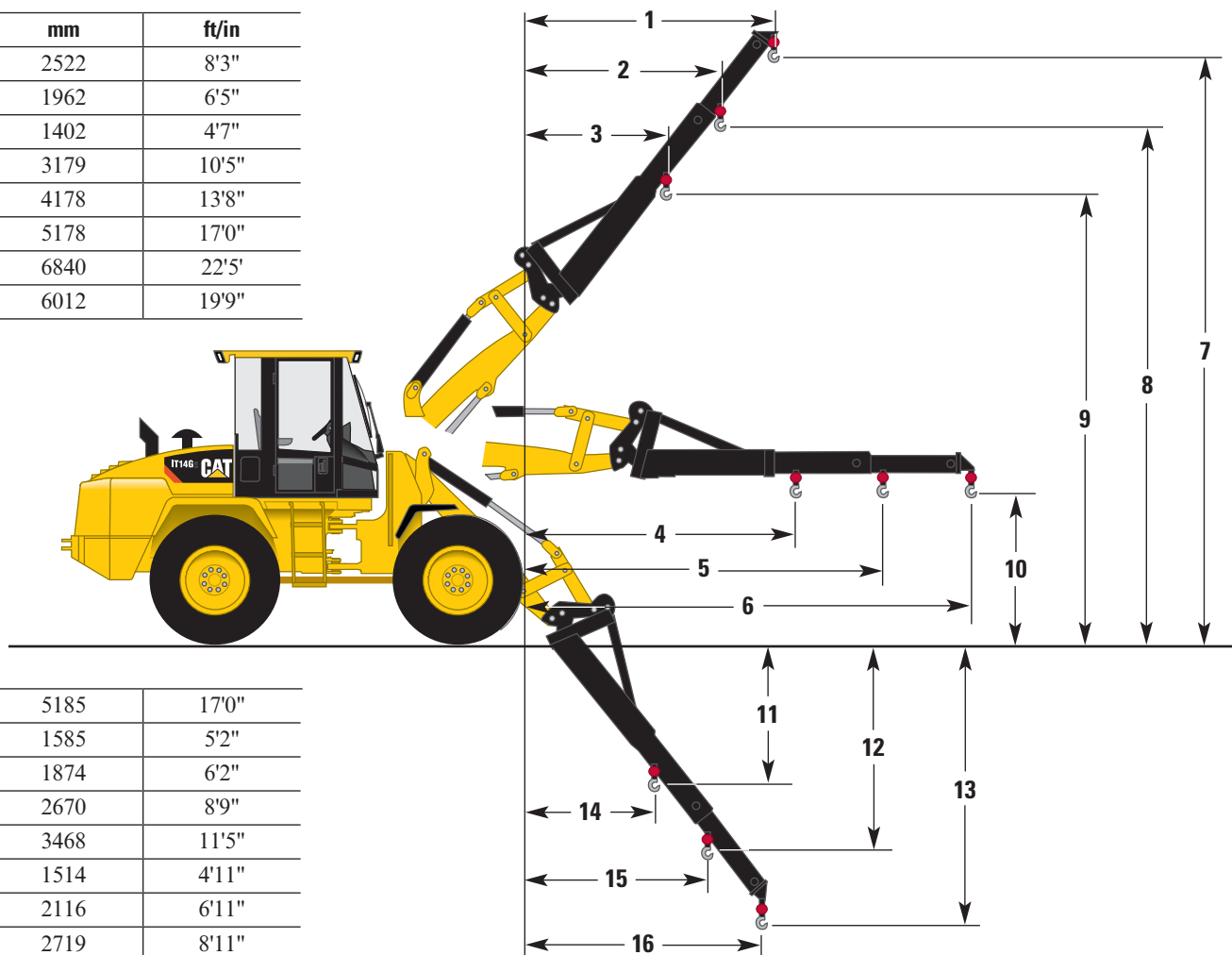
Tipping load is defined by SAE J732.

IT14G2 Integrated Toolcarrier

IT14G2 Dimensions with Material Handling Arm

All dimensions are approximate.

	mm	ft/in
1	2522	8'3"
2	1962	6'5"
3	1402	4'7"
4	3179	10'5"
5	4178	13'8"
6	5178	17'0"
7	6840	22'5"
8	6012	19'9"



9	5185	17'0"
10	1585	5'2"
11	1874	6'2"
12	2670	8'9"
13	3468	11'5"
14	1514	4'11"
15	2116	6'11"
16	2719	8'11"

IT14G2 Operating Specifications with Material Handling Arm

Material Handling Arm Position		Retracted	Mid-Position	Extended
Operating load at 40° full turn	kg	1370	1076	888
	lb	3,021	2,373	1,958
Static tipping load, straight*	kg	3158	2484	2051
	lb	6,963	5,477	4,522
Static tipping load, full 40° full turn*	kg	2740	2153	1777
	lb	6,042	4,747	3,918
Operating weight*	kg	7770	7770	7770
	lb	17,133	17,133	17,133

*Static tipping and operating weights shown include lubricants, full fuel tank, ROPS cab, 80 kg (176 lb) operator, standard 250 kg (550 lb) counterweight and 17.5-R25 (L2 equivalent) tires.

NOTE: Machine stability and operating weights are affected by tire size, tire ballast and other attachments.

IT14G2 Integrated Toolcarrier

Typical Material Densities – Loose

	kg/m ³	lb/yd ³		kg/m ³	lb/yd ³
Basalt	1960	3,305	Gypsum		
Bauxite, Kaolin	1420	2,394	broken	1810	3,052
Clay			crushed	1600	2,698
natural bed	1660	2,799	Limestone		
dry	1480	2,495	broken	1540	2,596
wet	1660	2,799	crushed	1540	2,596
Clay and gravel			Sand		
dry	1420	2,394	dry, loose	1420	2,394
wet	1540	2,596	damp	1690	2,849
Decomposed rock			wet	1840	3,102
75% rock, 25% earth	1960	3,305	Sand and clay		
50% rock, 50% earth	1720	2,900	loose	1600	2,698
25% rock, 75% earth	1570	2,647	Sand and gravel		
Earth			dry	1720	2,900
dry, packed	1510	2,546	wet	2020	3,416
wet, excavated	1600	2,698	Sandstone	1510	2,546
Granite			Shale	1250	2,107
broken	1660	2,799	Slag		
Gravel			broken	1750	2,950
pitrun	1930	3,254	Stone		
dry	1510	2,546	crushed	1600	2,698
dry, 6-50 mm (0.2-2 in)	1690	2,849			
wet, 6-50 mm (0.2-2 in)	2020	3,406			

IT14G2 Bucket Size Selector

