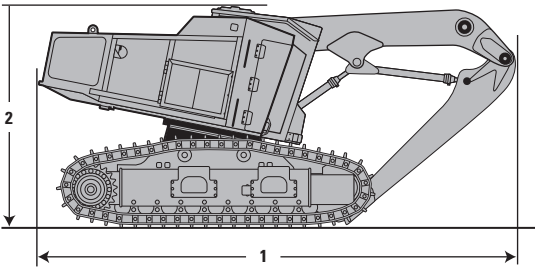


541 Series 2/552 Series 2 Track Feller Bunchers and Track Harvesters – FTS (Full Tail Swing)

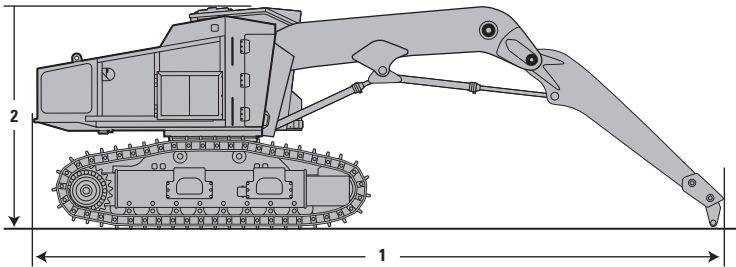
FTS Track Harvesters Shipping Dimensions

All dimensions are approximate.

552 Series 2 (Tilter) Track Harvester



541 Series 2 (Non-Tilter) FTS Track Harvester



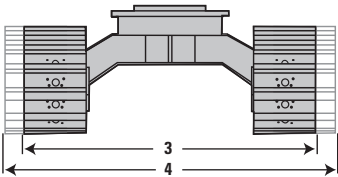
	541 Series 2	552 Series 2
1 Length – boom tucked	13 614 mm (536 in)	7010 mm (276 in)
2 Height to top of cab with standard skylight – boom tucked	3556 mm (140 in)	3962 mm (156 in)
3 Width – minimum width	3327 mm (131 in)	3327 mm (131 in)
4 Width – maximum width when undercarriage is set wide*	3607 mm (142 in)	3607 mm (142 in)
Weight	31 147 kg (68,667 lb)	36 151 kg (79,700 lb)

Length, height and width assume 711 mm (28 in) SG shoes.

*All 541 Series 2/552 Series 2 TFB models are shipped in the maximum width gauge configuration.

These illustrations and values are ESTIMATED for TRUCK SHIPMENT ONLY FROM THE FACTORY.

These are subject to change based on attachments, configurations, add-ons, etc.

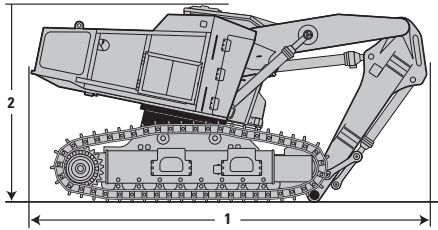


541 Series 2/552 Series 2 Track Feller Bunchers and Track Harvesters – FTS (Full Tail Swing)

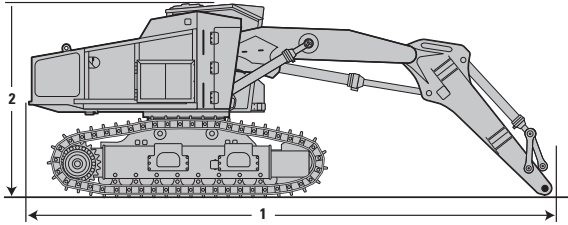
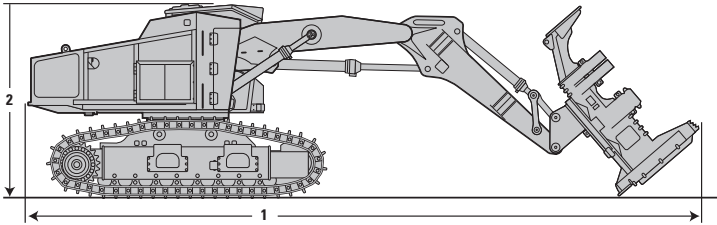
FTS Series 2 Track Feller Bunchers Shipping Dimensions

All dimensions are approximate.

Tilter 552 Series 2 Track Feller Buncher (Tilter) Standard Linkage



541 Series 2 (Non-Tilter) 552 Series 2 (Tilter) Standard Linkage



	541 Series 2	541 Series 2*	552 Series 2	552 Series 2*
1 Length – boom tucked	9423 mm (371 in)	11 709 mm (461 in)	9423 mm (371 in)	11 709 mm (461 in)
2 Height to top of cab with standard skylight – boom tucked	3556 mm (140 in)	3556 mm (140 in)	3962 mm (156 in)	3962 mm (156 in)
3 Width – minimum width	3327 mm (131 in)	3327 mm (131 in)	3327 mm (131 in)	3327 mm (131 in)
4 Width – maximum width when undercarriage is set wide**	3607 mm (142 in)	3607 mm (142 in)	3607 mm (142 in)	3607 mm (142 in)
Weight	30 826 kg (67,960 lb)	34 609 kg (76,300 lb)	35 816 kg (78,960 lb)	39 600 kg (87,300 lb)

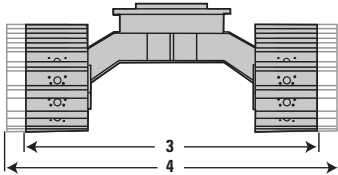
Length, height and width assume 711 mm (28 in) SG shoes.

* with HF 221 Partial Tilt Felling Head, boom and stick extended, head tilted back (assumes an estimated additional head weight of 3783 kg [8,340 lb])

**All 541 Series 2/552 Series 2 TFB models are shipped in the maximum width gauge configuration.

These illustrations and values are ESTIMATED for TRUCK SHIPMENT ONLY FROM THE FACTORY.

These are subject to change based on attachments, configurations, add-ons, etc.

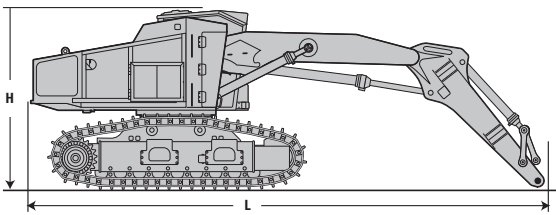
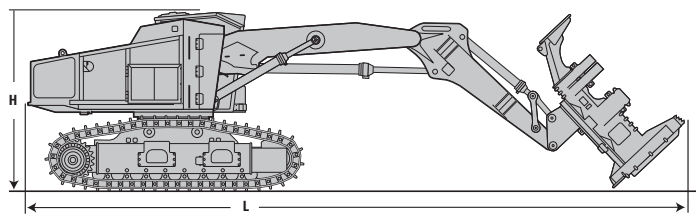


541 Series 2/552 Series 2 Track Feller Bunchers and Track Harvesters – FTS (Full Tail Swing)

FTS Series 2 Track Feller Bunchers Shipping Dimensions

All dimensions are approximate.

541 Series 2 (Non-Tilter) 552 Series 2 (Tilter) Long Felling Linkage



	541 Series 2	541 Series 2*	552 Series 2	552 Series 2*
1 Length	11 074 mm (436 in)	13 360 mm (526 in)	11 024 mm (434 in)	13 310 mm (524 in)
2 Height to top of cab with standard skylight	3556 mm (140 in)	3556 mm (140 in)	3962 mm (156 in)	3962 mm (156 in)
3 Width – minimum width	3327 mm (131 in)	3327 mm (131 in)	3327 mm (131 in)	3327 mm (131 in)
4 Width – maximum width when undercarriage is set wide**	3607 mm (142 in)	3607 mm (142 in)	3607 mm (142 in)	3607 mm (142 in)
Weight	31 135 kg (68,640 lb)	34 918 kg (76,980 lb)	36 124 kg (79,639 lb)	39 907 kg (87,979 lb)

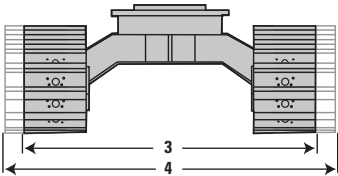
Length, height and width assume 711 mm (28 in) SG shoes.

* with HF 221 Partial Tilt Felling Head, boom and stick extended, head tilted back
(assumes an estimated additional head weight of 3783 kg [8,340 lb])

**All 541 Series 2/552 Series 2 TFB models are shipped in the maximum width gauge configuration.

These illustrations and values are ESTIMATED for TRUCK SHIPMENT ONLY FROM THE FACTORY.

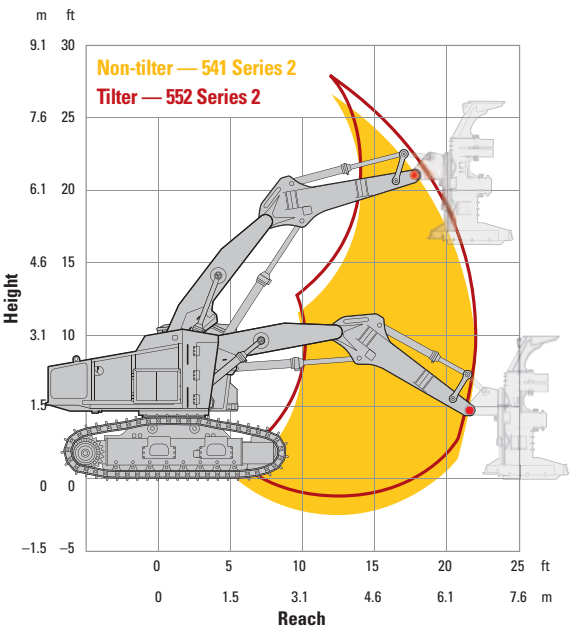
These are subject to change based on attachments, configurations, add-ons, etc.



541 Series 2/552 Series 2 Track Feller Bunchers and Track Harvesters – FTS (Full Tail Swing)

FTS Series 2 Track Feller Bunchers and Track Harvesters – Range Diagrams

Lift Range Information – Standard Felling Linkage
541 Series 2/552 Series 2 – FTS

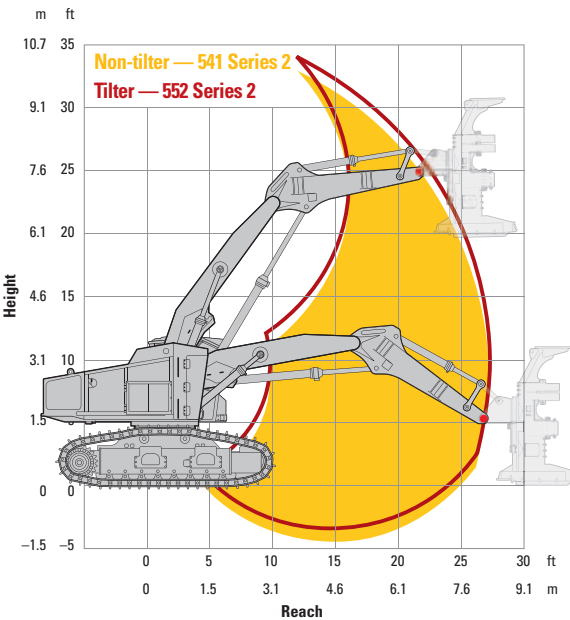


Lift Over Front of Tracks		
Model	541 Series 2	552 Series 2
Reach	Lift Capacity	Lift Capacity
3.2 m (10.5 ft)	21 600 kg (47,700 lb)	22 200 kg (49,000 lb)
4.5 m (15 ft)	15 200 kg (33,500 lb)	15 500 kg (34,200 lb)
6.6 m (21.5 ft)	9888 kg (21,800 lb)	9888 kg (21,800 lb)

Lift Over Side of Tracks		
Model	541 Series 2	552 Series 2
Reach	Lift Capacity	Lift Capacity
3.2 m (10.5 ft)	19 400 kg (42,800 lb)	22 200 kg (49,000 lb)
4.5 m (15 ft)	10 600 kg (23,400 lb)	14 900 kg (32,900 lb)
6.6 m (21.5 ft)	6100 kg (13,500 lb)	8600 kg (19,000 lb)

Note: Lift Capacity shown without attachment.
Additional reach and attachment weight will reduce lift capacity.

Lift Range Information – Long Felling Linkage
541 Series 2/552 Series 2 – FTS



Lift Over Front of Tracks		
Model	541 Series 2	552 Series 2
Reach	Lift Capacity	Lift Capacity
3.0 m (10 ft)	20 800 kg (45,900 lb)	21 800 kg (48,000 lb)
6.1 m (20 ft)	10 400 kg (22,900 lb)	10 900 kg (23,900 lb)
8.2 m (27 ft)	6400 kg (14,200 lb)	7700 kg (16,900 lb)

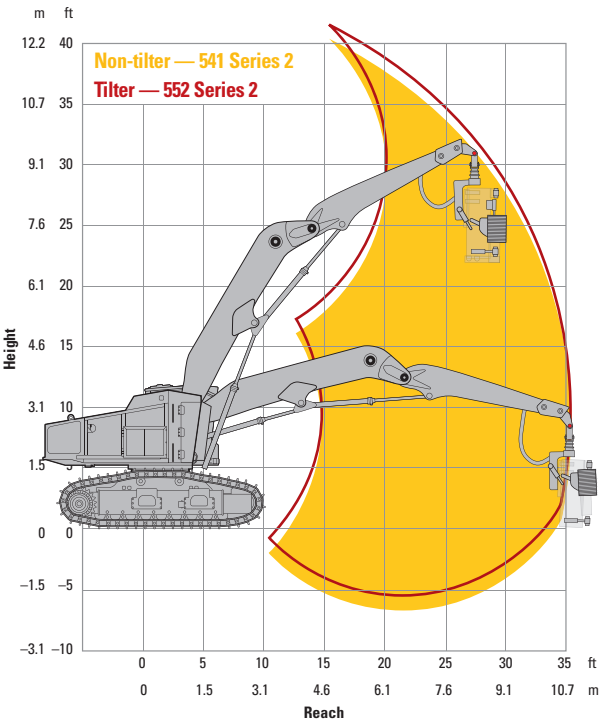
Lift Over Side of Tracks		
Model	541 Series 2	552 Series 2
Reach	Lift Capacity	Lift Capacity
3.0 m (10 ft)	20 800 kg (45,900 lb)	21 800 kg (48,000 lb)
6.1 m (20 ft)	6600 kg (14,600 lb)	9300 kg (20,600 lb)
8.2 m (27 ft)	4100 kg (9,100 lb)	6000 kg (13,100 lb)

Note: Lift Capacity shown without attachment.
Additional reach and attachment weight will reduce lift capacity.

541 Series 2/552 Series 2 Track Feller Bunchers and Track Harvesters – FTS (Full Tail Swing)

FTS Series 2 Track Feller Bunchers and Track Harvesters – Range Diagrams

Lift Range Information – Harvesting Linkage
541 Series 2/552 Series 2 – FTS

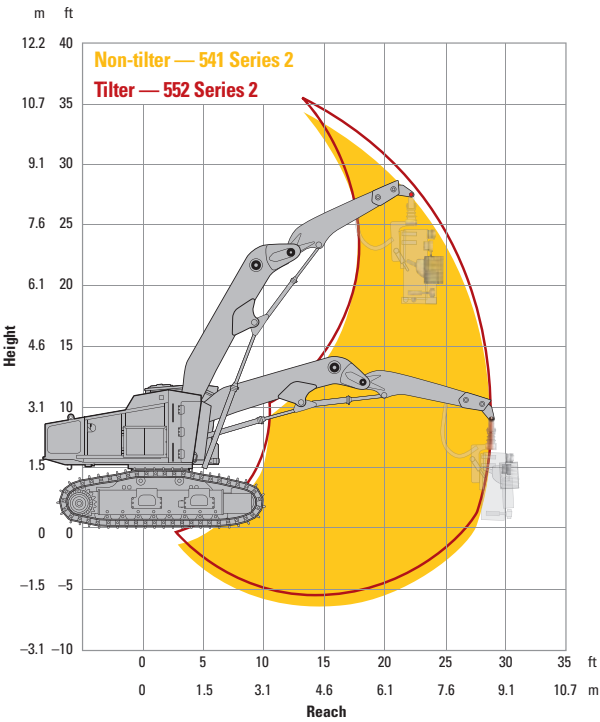


Lift Over Front of Tracks		
Model	541 Series 2	552 Series 2
Reach	Lift Capacity	Lift Capacity
4.5 m (15 ft)	9100 kg (20,200 lb)	9100 kg (20,200 lb)
7.6 m (25 ft)	7100 kg (15,700 lb)	9400 kg (20,600 lb)
10.7 m (35 ft)	4300 kg (9,500 lb)	5700 kg (12,500 lb)

Lift Over Side of Tracks		
Model	541 Series 2	552 Series 2
Reach	Lift Capacity	Lift Capacity
4.5 m (15 ft)	9100 kg (20,200 lb)	9100 kg (20,200 lb)
7.6 m (25 ft)	4500 kg (9,900 lb)	6500 kg (14,300 lb)
10.7 m (35 ft)	2700 kg (5,900 lb)	4000 kg (8,800 lb)

Note: Lift Capacity shown without attachment.
Additional reach and attachment weight will reduce lift capacity.

Lift Range Information – FTS Short Harvester Linkage
541 Series 2/552 Series 2 – FTS



Lift Over Front of Tracks		
Model	541 Series 2	552 Series 2
Reach	Lift Capacity	Lift Capacity
3.7 m (12 ft)	15 649 kg (34,500 lb)	16 601 kg (36,600 lb)
6.7 m (22 ft)	9888 kg (21,800 lb)	10 070 kg (22,200 lb)
8.8 m (29 ft)	6940 kg (15,300 lb)	7031 kg (15,500 lb)

Lift Over Side of Tracks		
Model	541 Series 2	552 Series 2
Reach	Lift Capacity	Lift Capacity
3.7 m (12 ft)	15 649 kg (34,500 lb)	16 601 kg (36,600 lb)
6.7 m (22 ft)	7847 kg (17,300 lb)	6500 kg (19,600 lb)
8.8 m (29 ft)	5171 kg (11,400 lb)	5942 kg (13,100 lb)

Note: Lift Capacity shown without attachment.
Additional reach and attachment weight will reduce lift capacity.