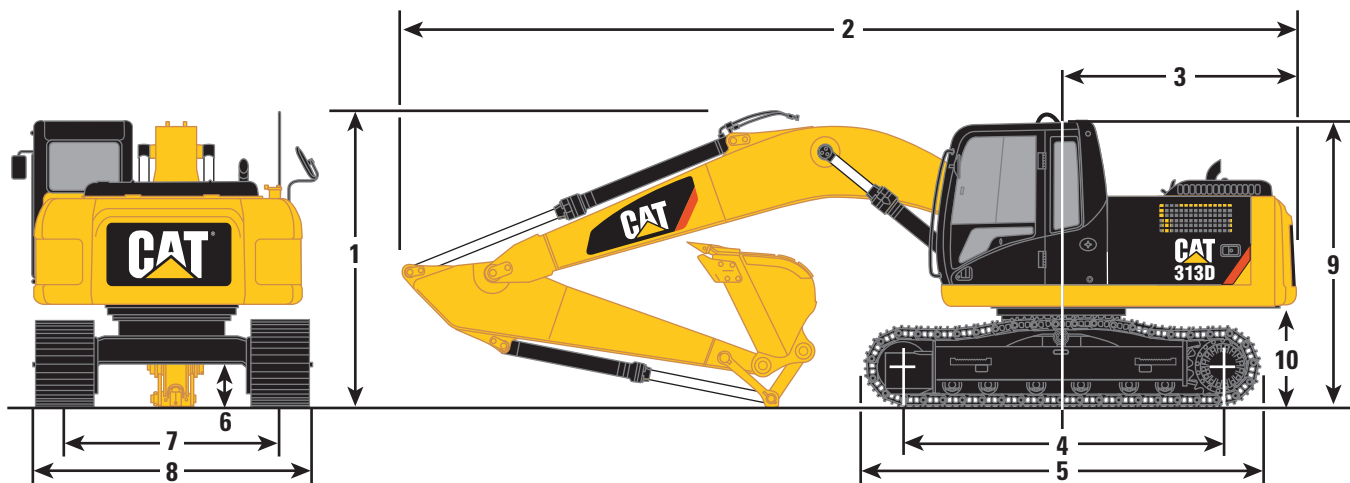


313D Heavy Duty Application Hydraulic Excavators

Dimensions

All dimensions are approximate.



Boom Options	Reach
Stick Options	2.5 m
1 Shipping Height	2830 mm
2 Shipping Length	7610 mm
3 Tail Swing Radius	2140 mm
4 Length to Center of Rollers	2780 mm
5 Track Length	3490 mm
6 Ground Clearance	430 mm
7 Track Gauge	1990 mm
8 Transport Width	500 mm Shoes
313D	2490 mm
9 Cab Height	2760 mm
10 Counterweight Clearance	915 mm

Undercarriage

Caterpillar designed and built track-type undercarriage.

Track Width

500 mm triple grouser

Ground Pressure

313D

41.8 kPa

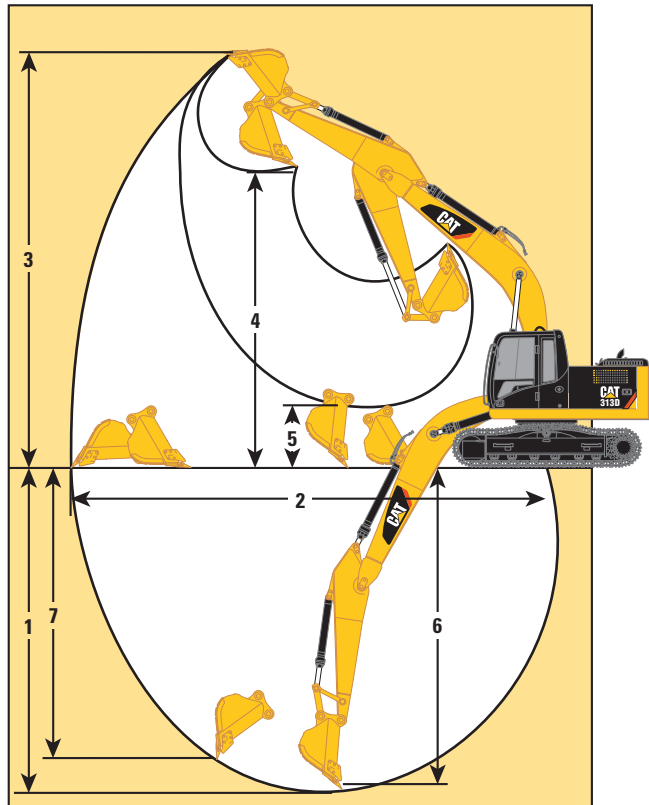
313D Work Tools

Part Number	Bucket Type	Linkage	Edge	Width (mm)	Capacity (m ³)	GET	Tip Number	Weight (kg)
370-3249	GD	Std	ISJ-Str	1050	0.65	J250 × 6	9J-3169 Long	494
358-4486	SD	Std	ISJ-Str	1067	0.63	J300 × 5	8E-3751 HD Long	605

313D Heavy Duty Application Hydraulic Excavators

Working Ranges

All dimensions are approximate.



Boom Options	Reach
	4.65 m
Stick Options	2.5 m*
Bucket	0.63 m³
1 Maximum Digging Depth	5580 mm
2 Maximum Reach at Ground Level	8220 mm
3 Maximum Cutting Height	8510 mm
4 Maximum Loading Height	6060 mm
5 Minimum Loading Height	1970 mm
6 Maximum Depth Cut for 2440 mm Level Bottom	5380 mm
7 Maximum Vertical Wall Digging Depth	5040 mm
Stick Digging Force (SAE)	63 kN
Bucket Digging Force (SAE)	82 kN

* Measurements shown are for machines equipped with the 0.63 m³ buckets.

313D Heavy Duty Application Hydraulic Excavators

Reach Boom Lift Capacities



Load Point Height



Load at Maximum Reach



Load Radius Over Front



Load Radius Over Side

STICK – 2.5 m
BUCKET – None

UNDERCARRIAGE – Standard
SHOES – 500 mm triple grouser

BOOM – Reach
BLADE – Without blade

		1.5 m		3.0 m		4.5 m		6.0 m				
												m
6.0 m	kg					*3300	*3300			*2400	*2400	5.37
4.5 m	kg					*3500	*3500	3300	2350	*2200	2150	6.37
3.0 m	kg			*5750	*5750	*4250	3600	3200	2300	*2200	1850	6.90
1.5 m	kg			*8250	5950	4750	3300	3100	2200	*2300	1700	7.08
Ground Line	kg			*6850	5600	4550	3100	3000	2100	2450	1700	6.93
-1.5 m	kg	*4850	*4850	8800	5550	4450	3050	2950	2050	2700	1900	6.42
-3.0 m	kg	*8750	*8750	*7850	5650	4500	3100			3400	2400	5.47

* Indicates that the load is limited by hydraulic lifting capacity rather than tipping load. The above loads are in compliance with hydraulic excavator lift capacity standard ISO 10567:2007. They do not exceed 87% of hydraulic lifting capacity or 75% of tipping load. Weight of all lifting accessories must be deducted from the above lifting capacities. Lifting capacities are based on the machine standing on a firm, uniform supporting surface. The use of a work tool attachment point to handle/lift objects, could affect the machine lift performance.

Always refer to the appropriate Operation and Maintenance Manual for specific product information.

313D Heavy Duty Application Hydraulic Excavators

	mm	m ³
BUCKET		
358-4486 Bucket Ar, SD	1067	0.63
Includes:		
305-1849 Bucket, SD	1067	0.63
4I-7343 Sidecutters		
8E-3751 Tip, long, heavy duty (5 tips)		
370-3249 Bucket, GD	1050	0.65
Includes:		
367-2003 Bucket, GD	1050	0.65
4I-7343 Sidecutters		
9J-3169 Tip, long (6 tips)		

Weights are approximate.