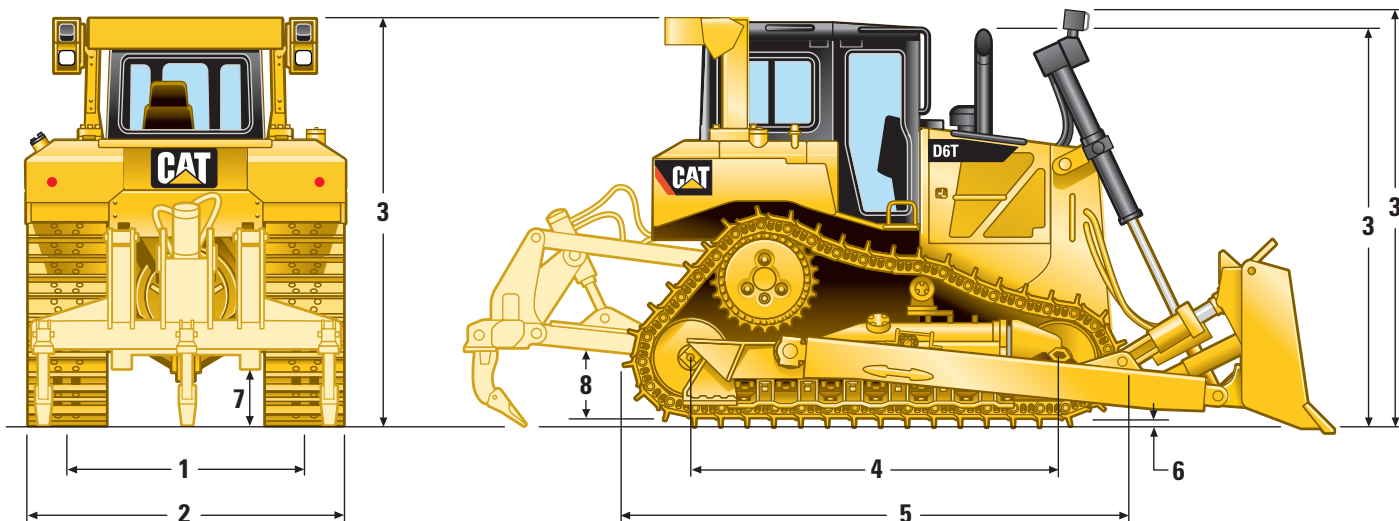


D6T WH Waste Handler

Dimensions

All dimensions are approximate.



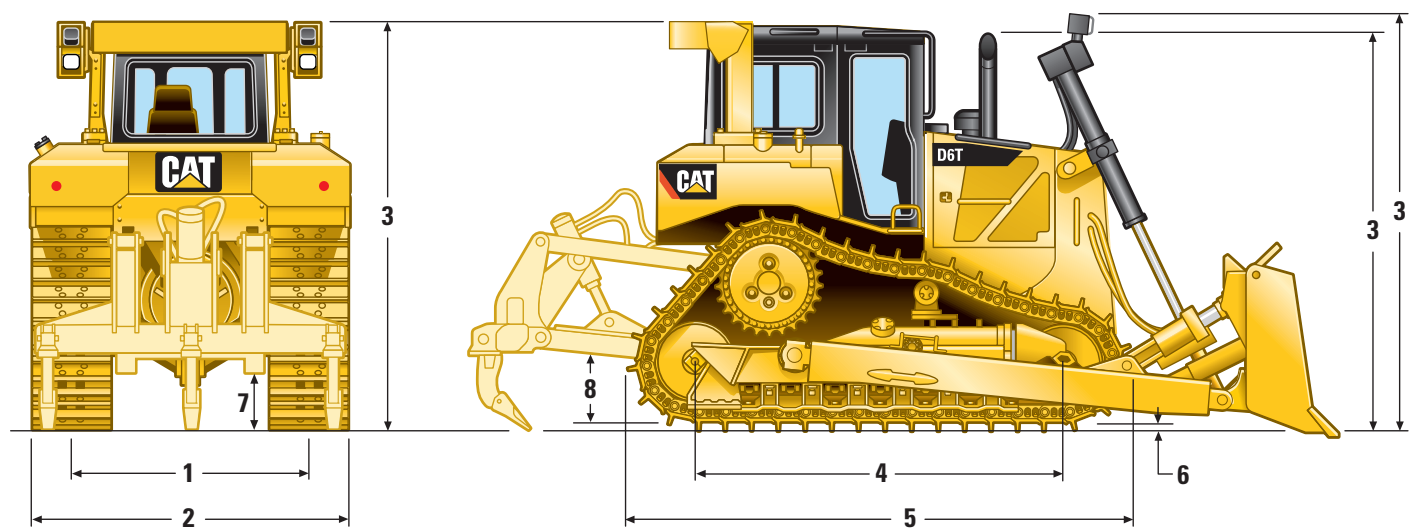
	XL		XW	
1 Track gauge	1880 mm	6 ft 2 in	2032 mm	6 ft 8 in
2 Width of tractor				
Over trunnions	2640 mm	8 ft 8 in	2950 mm	9 ft 8 in
Without trunnions (std. track)	2440 mm	8 ft 0 in	2794 mm	9 ft 2 in
3 Machine height from tip of grouser:				
Exhaust stack	3126 mm	10 ft 3 in	3126 mm	10 ft 3 in
Top of ROPS-Mounted Precleaner (not shown)	3378 mm	11 ft 1 in	3378 mm	11 ft 1 in
Premium Light Package	3310 mm	10 ft 10 in	3310 mm	10 ft 10 in
4 Length of track on ground	2840 mm	9 ft 4 in	2840 mm	9 ft 4 in
5 Length of basic tractor	3860 mm	12 ft 8 in	3860 mm	12 ft 8 in
With following attachments add:				
Striker box with 2 counterweights	613 mm	24 in	613 mm	24 in
Ripper Multi-Shank (tip at ground line)	1370 mm	4 ft 6 in	1370 mm	4 ft 6 in
Winch	517 mm	20 in	517 mm	20 in
S Blade	—	—	—	—
SU Blade	1271 mm	4 ft 2 in	1271 mm	4 ft 2 in
VPAT Blade	—	—	—	—
6 Height of grouser	65 mm	2.6 in	65 mm	2.6 in
7 Ground clearance	384 mm	15 in	384 mm	15 in
Track pitch	203 mm	8 in	203 mm	8 in
Number of shoes per side	41		41	
Number of rollers per side	7		7	
Standard shoe	560 mm	22 in	760 mm	30 in
Ground contact area (std. track)	3.18 m ²	4,929 in ²	4.31 m ²	6,681 in ²
Ground pressure*	57.2 kPa	8.30 psi	43.9 kPa	6.36 psi
8 Drawbar height	576 mm	23 in	576 mm	23 in
From ground face of shoe	511 mm	20 in	511 mm	20 in

* XL and XW with SU blade, LGP with S blade with no rear attachments unless otherwise specified and calculated per ISO 16754.

D6T WH Waste Handler

Dimensions

All dimensions are approximate.



	XW VPAT		LGP		LGP VPAT	
1 Track gauge	2286 mm	7 ft 6 in	2286 mm	7 ft 6 in	2286 mm	7 ft 6 in
2 Width of tractor						
Over trunnions	—		3480 mm	11 ft 5 in	—	
Without trunnions (std. track)	2997 mm	9 ft 10 in	3193 mm	10 ft 6 in	3150 mm	10 ft 4 in
3 Machine height from tip of grouser:						
Exhaust stack	3126 mm	10 ft 3 in	3176 mm	10 ft 5 in	3176 mm	10 ft 5 in
Top of ROPS-Mounted Precleaner (not shown)	3378 mm	11 ft 1 in	3429 mm	11 ft 3 in	3429 mm	11 ft 3 in
Premium Light Package	3310 mm	10 ft 10 in	3360 mm	11 ft 0 in	3360 mm	11 ft 0 in
4 Length of track on ground	2840 mm	9 ft 4 in	3250 mm	10 ft 8 in	3250 mm	10 ft 8 in
5 Length of basic tractor	3860 mm	12 ft 8 in	4247 mm	13 ft 11 in	4247 mm	13 ft 11 in
With following attachments add:						
Striker box with 2 counterweights	613 mm	24 in	613 mm	24 in	613 mm	24 in
Ripper Multi-Shank (tip at ground line)	1370 mm	4 ft 6 in	1370 mm	4 ft 6 in	1370 mm	4 ft 6 in
Winch	517 mm	20 in	397 mm	16 in	397 mm	16 in
S Blade	—		1168 mm	3 ft 10 in	—	
SU Blade	—		—		—	
VPAT Blade	1504 mm	4 ft 11 in	—		1412 mm	4 ft 8 in
6 Height of grouser	65 mm	2.6 in	65 mm	2.6 in	65 mm	2.6 in
7 Ground clearance	384 mm	15 in	434 mm	17 in	434 mm	17 in
Track pitch	203 mm	8 in	203 mm	8 in	203 mm	8 in
Number of shoes per side	41		45		45	
Number of rollers per side	7		8		8	
Standard shoe	710 mm	28 in	915 mm	36 in	785 mm	31 in
Ground contact area (std. track)	4.03 m ²	6,247 in ²	5.95 m ²	9,223 in ²	5.10 m ²	7,905 in ²
Ground pressure*	52.0 kPa	7.54 psi	33.5 kPa	4.86 psi	42.8 kPa	6.20 psi
8 Drawbar height	576 mm	23 in	626 mm	25 in	626 mm	25 in
From ground face of shoe	511 mm	20 in	561 mm	22 in	561 mm	22 in

* XL and XW with SU blade, LGP with S blade with no rear attachments unless otherwise specified and calculated per ISO 16754.