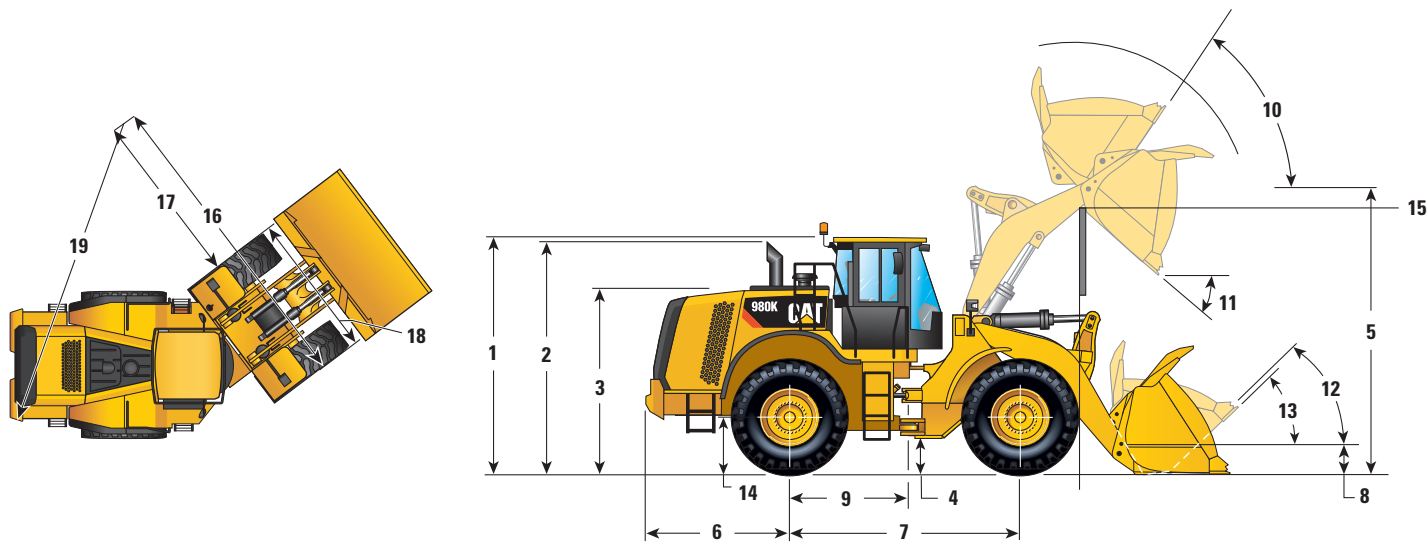


980K Wheel Loader

Dimensions

All dimensions are approximate and based on L4 Michelin 29.5R25 XLDD1 Radial tires.



1	Height to Top of Rops	3809 mm	12'6"
2	Height to Top of Exhaust Pipe	3737 mm	12'4"
3	Height to Top of Hood	3109 mm	10'2"
4	Ground Clearance With 29.5R25 (See Tire Option Chart for Other Tires)	460 mm	1'6"
5	B-Pin Height – Standard	4539 mm	14'11"
	B-Pin Height – High-Lift	4760 mm	15'7"
6	Center Line of Rear Axle to Edge of Counterweight	2510 mm	8'2"
7	Wheelbase	3700 mm	12'1"
8	B-Pin Height @ Carry – Standard	673 mm	2'0"
9	Center Line of Rear Axle to Hitch	1850 mm	6'1"
10	Rack Back @ Maximum Lift	61 degrees	
11	Dump Angle @ Maximum Lift	52 degrees	
12	Rack Back @ Carry	49 degrees	
13	Rack Back @ Ground	41 degrees	
14	Height to Center Line of Axle	885 mm	2'11"
15	Lift Arm Clearance	3795 mm	12'6"
	Lift Arm Clearance @ High Lift	4041 mm	13'4"

Turning Radius

All dimensions are approximate and based on L4 Michelin 29.5R25 XLDD1 Radial tires.

16	Clearance Circle to Outside of Tires	7183 mm	23'6"
17	Clearance Circle to Inside of Tires	3875 mm	12'8"
18	Width Over Tires	3307 mm	10'9"
19	Clearance Circle to Outside Edge of Counterweight	7160 mm	23'6"

980K Wheel Loader

Operating Specifications

Bucket Type		Rock – Pin On***		Heavy Duty Rock – Pin On***
Edge Type		Teeth and Segments	Teeth and Segments	Teeth and Segments
Capacity – Rated (§)	m³	4.48	5.66	5.41
	yd³	5.86	7.40	7.07
Capacity – Struck (§)	m³	3.43	5.07	4.84
	yd³	4.48	6.63	6.33
Width (§)	mm	3504	3504	3645
	ft/in	11'5"	11'5"	11'11"
Dump Clearance at Maximum Lift and 45° Discharge (§)	mm	3051	2890	2941
	ft/in	10'0"	9'5"	9'7"
Reach at Maximum Lift and 45° Discharge (§)	mm	1788	1979	1965
	ft/in	5'10"	6'5"	6'5"
Reach at Level Lift Arm and Bucket Level (§)	mm	3359	3608	3561
	ft/in	11'0"	11'10"	11'8"
Digging Depth (§)	mm	106	106	77
	in	4.1"	4.1"	3"
Overall Length	mm	9843	10 092	10051
	ft/in	32'4"	33'2"	33'0"
Overall Height with Bucket at Maximum Lift	mm	6204	6378	6378
	ft/in	20'5"	21'0"	21'0"
Loader Clearance Circle with Bucket at Carry Position (§)	mm	16 093	16 235	16 340
	ft/in	52'10"	53'4"	53'8"
Static Tipping Load, Straight (ISO)*	kg	21 886	20 991	20 690
	lb	48,238	46,265	45,601
Static Tipping Load, Straight (Rigid Tire)*	kg	23 262	22 365	22 070
	lb	51,270	49,292	48,644
Static Tipping Load, Articulated (ISO)*	kg	19 269	18 426	18 090
	lb	42,469	40,611	39,871
Static Tipping Load, Articulated (Rigid Tire)*	kg	20 495	19 654	19 323
	lb	45,172	43,318	42,589
Breakout Force** (§)	kN	221	189	205
	lb	49,824	42,479	46,121
Operating Weight*	kg	32 132	32 478	32 897
	lb	70,819	71,581	72,504

* Static tipping loads and operating weights shown are based on a machine configuration with Michelin 29.5R25 XLDD1 L4 Radial tires, full fluids, operator, standard counterweight, standard transmission, cold start, roading fenders, Product Link, open differential axles (front/rear), power train guard, secondary steering, and sound suppression.

** Measured 102 mm (4") behind tip of cutting edge with bucket hinge pin as pivot point in accordance with SAE J732C.

*** Rock bucket specifications are given on Michelin 29.5R25 XLDD2 L5 Radial tires and are configured with side protectors.

(§) Specifications and ratings conform to all applicable standards recommended by the Society of Automotive Engineers, including SAE Standard J732C governing loader ratings.

(ISO) Full compliance to ISO 14397-1 (2007) Sections 1 thru 6, which requires 2% verification between calculations and testing.

(Rigid Tire) Compliance to ISO 14397-1 (2007) Sections 1 thru 5.

980K Wheel Loader

Operating Specifications

Bucket Type		General Purpose – Pin On					
Edge Type		Bolt-On Edges	Teeth and Segments	Bolt-On Edges	Teeth and Segments	Bolt-On Edges	Teeth and Segments
Capacity – Rated (§)	m³	5.40	5.40	5.70	5.70	6.00	6.00
	yd³	7.06	7.06	7.46	7.46	7.85	7.85
Capacity – Struck (§)	m³	5.00	5.00	4.50	4.50	5.30	5.30
	yd³	6.54	6.54	5.89	5.89	6.93	6.93
Width (§)	mm	3447	3535	3447	3535	3447	3535
	ft/in	11'3"	11'7"	11'3"	11'7"	11'3"	11'7"
Dump Clearance at Maximum Lift and 45° Discharge (§)	mm	3273	3107	3204	3037	3187	3019
	ft/in	10'8"	10'2"	10'6"	9'11"	10'5"	9'10"
Reach at Maximum Lift and 45° Discharge (§)	mm	1556	1693	1604	1738	1625	1760
	ft/in	5'1"	5'6"	5'3"	5'8"	5'4"	5'9"
Reach at Level Lift Arm and Bucket Level (§)	mm	3040	3252	3124	3336	3152	3364
	ft/in	9'11"	10'8"	10'3"	10'11"	10'4"	11'0"
Digging Depth (§)	mm	103	103	103	103	103	103
	in	4"	4"	4"	4"	4"	4"
Overall Length	mm	9509	9750	9593	9834	9621	9862
	ft/in	31'3"	32'0"	31'6"	32'4"	31'7"	32'5"
Overall Height with Bucket at Maximum Lift	mm	6421	6421	6243	6243	6269	6269
	ft/in	21'1"	21'1"	20'6"	20'6"	20'7"	20'7"
Loader Clearance Circle with Bucket at Carry Position (§)	mm	15 853	16 076	15 898	16 123	15 913	16 138
	ft/in	52'1"	52'9"	52'2"	52'11"	52'3"	53'0"
Static Tipping Load, Straight (ISO)*	kg	21 822	21 637	21 583	21 397	21 444	21 258
	lb	48,096	47,689	47,569	47,161	47,263	46,853
Static Tipping Load, Straight (Rigid Tire)*	kg	23 185	22 999	22 948	22 760	22 811	22 623
	lb	51,101	50,691	50,578	50,165	50,275	49,861
Static Tipping Load, Articulated (ISO)*	kg	19 267	19 082	19 042	18 856	18 907	18 721
	lb	42,464	42,058	41,969	41,560	41,671	41,261
Static Tipping Load, Articulated (Rigid Tire)*	kg	20 484	20 298	20 262	20 074	20 129	19 941
	lb	45,148	44,738	44,658	44,245	44,365	43,951
Breakout Force** (§)	kN	238	235	224	222	220	218
	lb	53,548	52,996	50,542	50,003	49,551	49,016
Operating Weight*	kg	31 244	31 383	31 327	31 466	31 423	31 562
	lb	68,862	69,167	69,045	69,350	69,256	69,561

* Static tipping loads and operating weights shown are based on a machine configuration with Michelin 29.5R25 XLDD1 L4 Radial tires, full fluids, operator, standard counterweight, standard transmission, cold start, roading fenders, Product Link, open differential axles (front/rear), power train guard, secondary steering, and sound suppression.

** Measured 102 mm (4") behind tip of cutting edge with bucket hinge pin as pivot point in accordance with SAE J732C.

*** Rock bucket specifications are given on Michelin 29.5R25 XLDD2 L5 Radial tires and are configured with side protectors.

(§) Specifications and ratings conform to all applicable standards recommended by the Society of Automotive Engineers, including SAE Standard J732C governing loader ratings.

(ISO) Full compliance to ISO 14397-1 (2007) Sections 1 thru 6, which requires 2% verification between calculations and testing.

(Rigid Tire) Compliance to ISO 14397-1 (2007) Sections 1 thru 5.

980K Wheel Loader

Operating Specifications

Bucket Type		Heavy Duty General Purpose – Pin On		Material Handling – Pin On	
Edge Type		Bolt-On Edges	Teeth and Segments	Bolt-On Edges	Teeth and Segments
Capacity – Rated (§)	m³	5.70	5.70	5.70	5.70
	yd³	7.46	7.46	7.46	7.46
Capacity – Struck (§)	m³	4.50	4.50	5.06	5.06
	yd³	5.89	5.89	6.62	6.62
Width (§)	mm	3447	3535	3447	3535
	ft/in	11'3"	11'7"	11'3"	11'7"
Dump Clearance at Maximum Lift and 45° Discharge (§)	mm	3204	3037	3105	2928
	ft/in	10'6"	9'11"	10'2"	9'7"
Reach at Maximum Lift and 45° Discharge (§)	mm	1604	1738	1519	1641
	ft/in	5'3"	5'8"	4'11"	5'4"
Reach at Level Lift Arm and Bucket Level (§)	mm	3124	3336	3149	3361
	ft/in	10'3"	10'11"	10'4"	11'0"
Digging Depth (§)	mm	103	103	103	103
	in	4"	4"	4"	4"
Overall Length	mm	9593	9834	9618	9859
	ft/in	31'6"	32'4"	31'7"	32'5"
Overall Height with Bucket at Maximum Lift	mm	6243	6243	6242	6242
	ft/in	20'6"	20'6"	20'6"	20'6"
Loader Clearance Circle with Bucket at Carry Position (§)	mm	15 898	16 123	15 911	16 137
	ft/in	52'2"	52'11"	52'3"	53'0"
Static Tipping Load, Straight (ISO)*	kg	21 425	21 239	21 109	20 926
	lb	47,220	46,812	46,524	46,121
Static Tipping Load, Straight (Rigid Tire)*	kg	22 787	22 600	22 434	22 249
	lb	50,224	49,811	49,445	49,037
Static Tipping Load, Articulated (ISO)*	kg	18 883	18 698	18 611	18 427
	lb	41,620	41,211	41,018	40,615
Static Tipping Load, Articulated (Rigid Tire)*	kg	20 101	19 914	19 795	19 610
	lb	44,304	43,891	43,628	43,221
Breakout Force** (§)	kN	224	221	221	218
	lb	50,415	49,875	49,662	49,126
Operating Weight*	kg	31 473	31 612	31 452	31 591
	lb	69,367	69,672	69,320	69,625

* Static tipping loads and operating weights shown are based on a machine configuration with Michelin 29.5R25 XLDD1 L4 Radial tires, full fluids, operator, standard counterweight, standard transmission, cold start, roading fenders, Product Link, open differential axles (front/rear), power train guard, secondary steering, and sound suppression.

** Measured 102 mm (4") behind tip of cutting edge with bucket hinge pin as pivot point in accordance with SAE J732C.

*** Rock bucket specifications are given on Michelin 29.5R25 XLDD2 L5 Radial tires and are configured with side protectors.

(§) Specifications and ratings conform to all applicable standards recommended by the Society of Automotive Engineers, including SAE Standard J732C governing loader ratings.

(ISO) Full compliance to ISO 14397-1 (2007) Sections 1 thru 6, which requires 2% verification between calculations and testing.

(Rigid Tire) Compliance to ISO 14397-1 (2007) Sections 1 thru 5.

980K Wheel Loader

Operating Specifications

Bucket Type		Material Handling with Backgrading Edge – Pin On	Light Material – Pin On	High Lift Change in Specs	Auxiliary Counterweight Change in Specs
		Teeth	Bolt-On Edges		
Capacity – Rated (§)	m³	5.59	8.20		
	yd³	7.31	10.73		
Capacity – Struck (§)	m³	4.98	6.47		
	yd³	6.51	8.46		
Width (§)	mm	3580	3638		
	ft/in	11'8"	11'11"		
Dump Clearance at Maximum Lift and 45° Discharge (§)	mm	3201	2917	220	
	ft/in	10'6"	9'6"	8"	
Reach at Maximum Lift and 45° Discharge (§)	mm	1464	1700		
	ft/in	4'9"	5'6"		
Reach at Level Lift Arm and Bucket Level (§)	mm	3043	3411	160	
	ft/in	9'11"	11'2"	6"	
Digging Depth (§)	mm	74	108		
	in	2.9"	4.2"		
Overall Length	mm	9488	9883	201	
	ft/in	31'2"	32'6"	8"	
Overall Height with Bucket at Maximum Lift	mm	6486	6536	221	
	ft/in	21'4"	21'6"	9"	
Loader Clearance Circle with Bucket at Carry Position (§)	mm	15 954	16 234	175	
	ft/in	52'5"	53'4"	7"	
Static Tipping Load, Straight (ISO)*	kg	20 420	20 819	–1831	1437
	lb	45,005	45,887	–4,036	3,167
Static Tipping Load, Straight (Rigid Tire)*	kg	21 744	22 238	–2026	1546
	lb	47,925	49,012	–4,467	3,408
Static Tipping Load, Articulated (ISO)*	kg	17 901	18 293	–1656	1227
	lb	39,453	40,318	–3,651	2,704
Static Tipping Load, Articulated (Rigid Tire)*	kg	19 082	19 567	–1836	1342
	lb	42,058	43,125	–4,048	2,958
Breakout Force** (§)	kN	234	186	3	
	lb	52,573	41,956	813	
Operating Weight*	kg	32 263	31 831	115	693
	lb	71,108	70,156	253	1,528

* Static tipping loads and operating weights shown are based on a machine configuration with Michelin 29.5R25 XLDD1 L4 Radial tires, full fluids, operator, standard counterweight, standard transmission, cold start, roading fenders, Product Link, open differential axles (front/rear), power train guard, secondary steering, and sound suppression.

** Measured 102 mm (4") behind tip of cutting edge with bucket hinge pin as pivot point in accordance with SAE J732C.

*** Rock bucket specifications are given on Michelin 29.5R25 XLDD2 L5 Radial tires and are configured with side protectors.

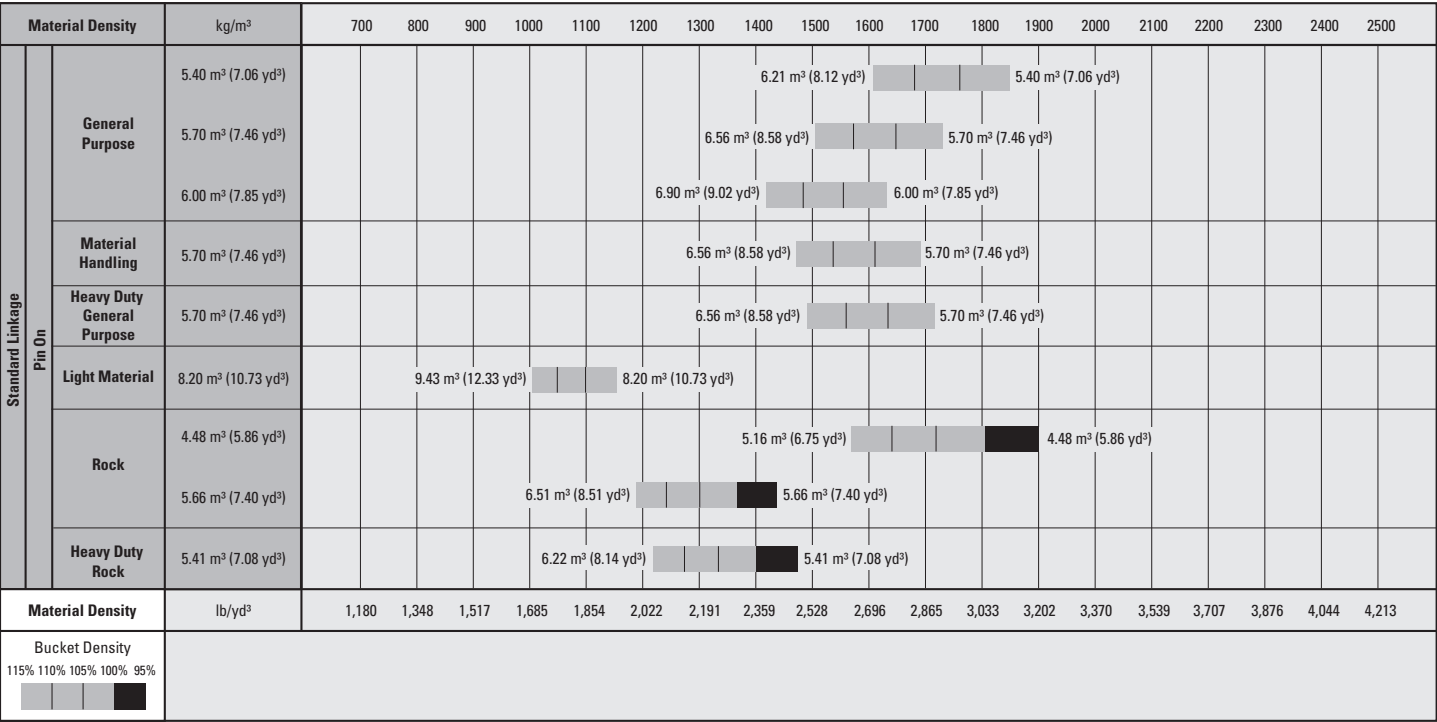
(§) Specifications and ratings conform to all applicable standards recommended by the Society of Automotive Engineers, including SAE Standard J732C governing loader ratings.

(ISO) Full compliance to ISO 14397-1 (2007) Sections 1 thru 6, which requires 2% verification between calculations and testing.

(Rigid Tire) Compliance to ISO 14397-1 (2007) Sections 1 thru 5.

980K Wheel Loader

Bucket Selection Chart



All buckets are showing Bolt-On Edges.
Material Handling buckets are flat floor buckets.

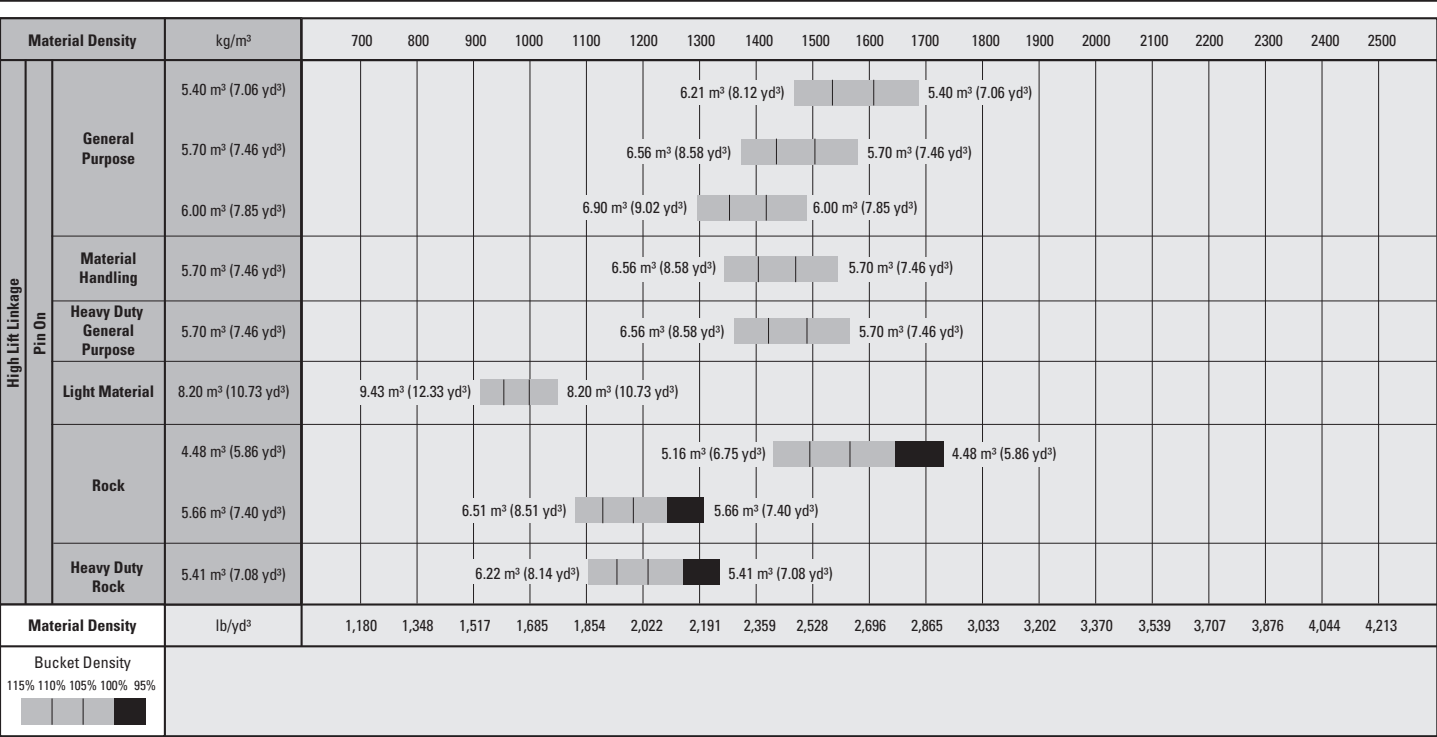
Bucket Fill Factors

(as a % of ISO Rated Capacity)

Loose Material		Performance Series Bucket
Earth/Clay		115
Sand and Gravel		115
Aggregate:	25-76 mm (1 to 3 in)	110
	19 mm (0.75 in) and smaller	105
Rock		100

980K Wheel Loader

Bucket Selection Chart



All buckets are showing Bolt-On Edges.
Material Handling buckets are flat floor buckets.

Bucket Fill Factors

(as a % of ISO Rated Capacity)

Loose Material		Performance Series Bucket
Earth/Clay		115
Sand and Gravel		115
Aggregate:	25-76 mm (1 to 3 in)	110
	19 mm (0.75 in) and smaller	105
Rock		100