

247B/257B Series 3 Multi Terrain Loaders / 259B Series 3 Compact Track Loaders

Engine		
Engine Model		
247B Series 3	Cat C2.2 T	
257B/259B Series 3	Cat C3.4 DIT	
Net Power (SAE 1349/ISO 9249)		
247B Series 3	42 kW	56 hp
257B/259B Series 3	53 kW	71 hp
Gross Power (SAE J1995)		
247B Series 3	46 kW	62 hp
257B/259B Series 3	55 kW	74 hp
Displacement		
247B Series 3	2.2 L	134 in ³
257B/259B Series 3	3.3 L	201 in ³
Stroke		
247B Series 3	100 mm	3.9 in
257B/259B Series 3	120 mm	4.7 in
Bore		
247B Series 3	84 mm	3.3 in
257B/259B Series 3	94 mm	3.7 in

Weights*

Operating Weight		
247B Series 3	3174 kg	6,997 lb
257B Series 3	3656 kg	8,060 lb
259B Series 3 (320 mm/12.6 in tracks)	4052 kg	8,934 lb
259B Series 3 (400 mm/15.7 in tracks)	4185 kg	9,227 lb

Operating Specifications*

Rated Operating Capacity (50% Tipping Load)		
247B Series 3	975 kg	2,150 lb
257B Series 3	1213 kg	2,675 lb
259B Series 3	1338 kg	2,950 lb
Rated Operating Capacity (35% Tipping Load)		
247B Series 3	683 kg	1,505 lb
257B Series 3	848 kg	1,870 lb
259B Series 3	937 kg	2,065 lb
Rated Operating Capacity with Optional Counterweight		
257B Series 3	1236 kg	2,725 lb
259B Series 3	1360 kg	3,000 lb
Tipping Load		
247B Series 3	1950 kg	4,300 lb
257B Series 3	2427 kg	5,350 lb
259B Series 3 (320 mm/12.6 in tracks)	2676 kg	5,900 lb
Breakout Force, Tilt Cylinder		
247B Series 3	1842 kg	4,060 lb
257B Series 3	2045 kg	4,508 lb
259B Series 3	2045 kg	4,508 lb
Ground Contact Area		
247B Series 3	1.14 m ²	1,770 in ²
257B Series 3	1.14 m ²	1,770 in ²
259B Series 3 (320 mm/12.6 in tracks)	0.96 m ²	1,495 in ²
259B Series 3 (400 mm/15.7 in tracks)	1.19 m ²	1,848 in ²
Ground Pressure		
247B Series 3	27.3 kPa	4.0 psi
257B Series 3	31 kPa	4.5 psi
259B Series 3 (320 mm/12.6 in tracks)	41.2 kPa	6.0 psi
259B Series 3 (400 mm/15.7 in tracks)	34.4 kPa	5.0 psi

* Operating Weight, Operating Specifications and Dimensions all based on 75 kg (165 lb) operator, all fluids, 1 speed (247B/257B Series 3) or 2 speed (259B Series 3), OROPS, dirt bucket, no optional counterweights and manual quick coupler (unless otherwise noted).

Hydraulic System

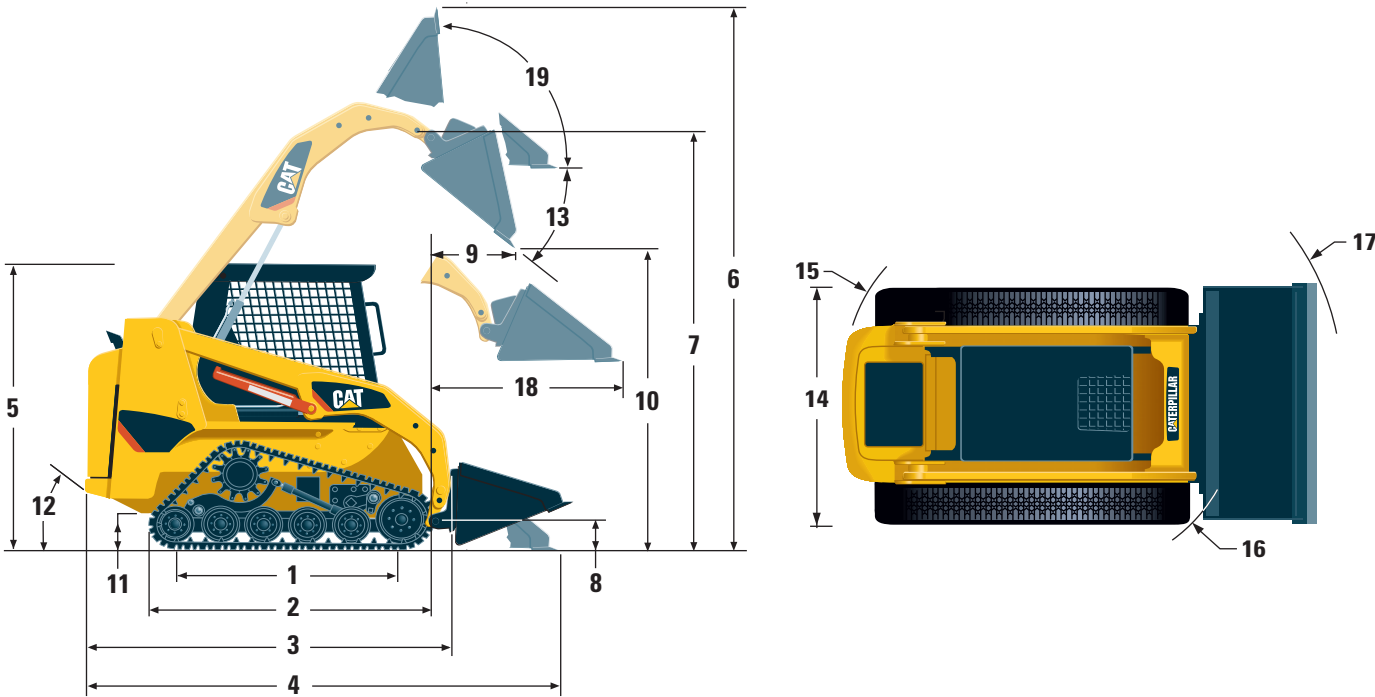
Hydraulic Flow	Standard	
Loader Hydraulic Pressure	23 000 kPa	3,335 psi
Loader Hydraulic Flow – 247B Series 3	61 L/min	16 gal/min
Loader Hydraulic Flow – 257B/259B Series 3	83 L/min	22 gal/min
Hydraulic Power (calculated) – 247B Series 3	23.2 kW	31 hp
Hydraulic Power (calculated) – 257B/259B Series 3	31.9 kW	42.8 hp
Hydraulic Flow	High Flow – 257B Series 3, 259B Series 3	
Loader Hydraulic Pressure	23 000 kPa	3,335 psi
Loader Hydraulic Flow	117 L/min	31 gal/min
Hydraulic Power (calculated)	45 kW	60.3 hp

247B/257B Series 3 Multi Terrain Loaders / 259B Series 3 Compact Track Loaders

Cab		Power Train			Service Refill Capacities		
ROPS	SAE J1040 MAY94, ISO 3471:1994	Travel Speed (Forward or Reverse)			Cooling System	10 L	2.6 gal
FOPS	SAE J/ISO 3449 APR98 LEVEL I, ISO 3449:1992 Level I	247B Series 3	11.3 km/h	7.0 mph	Engine Crankcase		
		257B Series 3	11.1 km/h	6.9 mph	247B Series 3	10 L	2.6 gal
		259B Series 3	9.5 km/h	5.9 mph	257B/259B Series 3	9 L	2.4 gal
FOPS Level II	SAE J/ISO 3449 APR98 LEVEL II, ISO 3449:1992 Level II (optional)	Travel Speed (Forward or Reverse) – 2 Speed			Fuel Tank		
		257B Series 3	16.1 km/h	10 mph	247B Series 3	65 L	17 gal
		(optional)			257B/259B Series 3	84 L	22.2 gal
		259B Series 3	13.6 km/h	8.5 mph	Hydraulic System	55 L	14.5 gal
		(standard)			Hydraulic Tank	35 L	9.2 gal

247B/257B Series 3 Multi Terrain Loaders / 259B Series 3 Compact Track Loaders

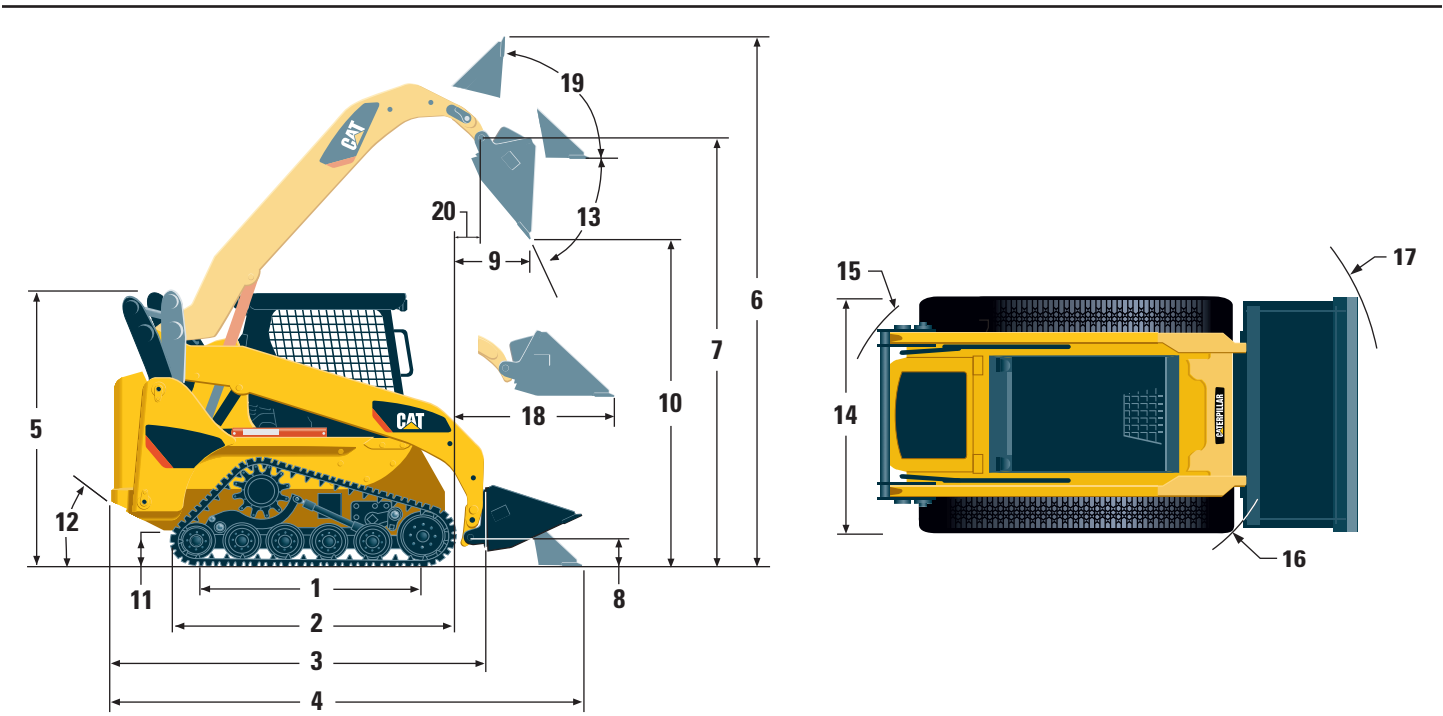
Dimensions



	247B Series 3	
	mm	in
1 Length of Track on Ground	1499	59
2 Overall Length of Track	1899	75
3 Length without Bucket	2518	99
4 Length with Bucket on Ground	3285	129
5 Height to Top of Cab	1990	78
6 Maximum Overall Height	3799	150
7 Bucket Pin Height at Maximum Lift	2862	112
8 Bucket Pin Height at Carry Position	220	8.7
9 Reach at Maximum Lift and Dump	625	25
10 Clearance at Maximum Lift and Dump	2134	84
11 Ground Clearance	267	10
12 Departure Angle	41°	
13 Maximum Dump Angle	40°	
14 Vehicle Width	1676	66
15 Turning Radius from Center – Machine Rear	1377	54
16 Turning Radius from Center – Coupler	1312	52
17 Turning Radius from Center – Bucket	2095	82
18 Maximum Reach with Arms Parallel to Ground	1339	53
19 Rack Back Angle at Maximum Height	82°	

247B/257B Series 3 Multi Terrain Loaders / 259B Series 3 Compact Track Loaders

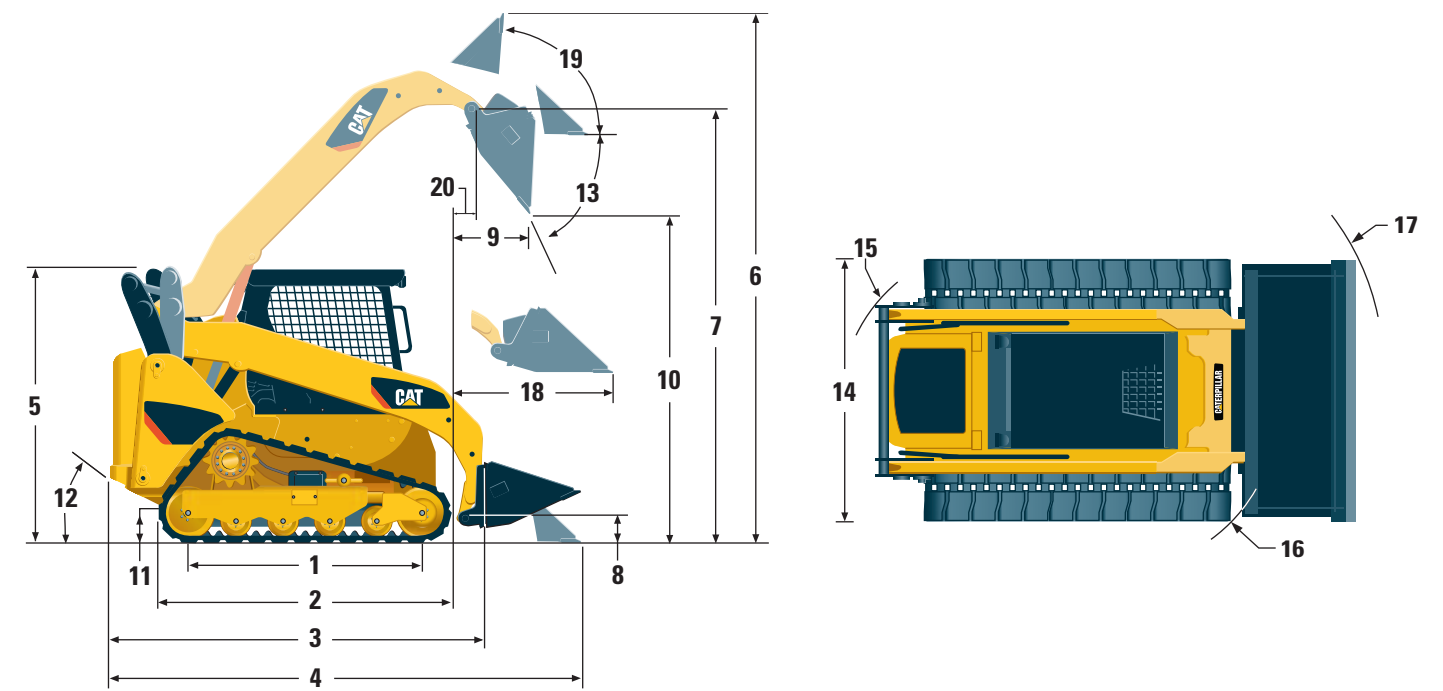
Dimensions



	257B Series 3	
	mm	in
1 Length of Track on Ground	1499	59
2 Overall Length of Track	1899	75
3 Length without Bucket	2718	107
4 Length with Bucket on Ground	3439	135
5 Height to Top of Cab	2035	80
6 Maximum Overall Height	3895	153
7 Bucket Pin Height at Maximum Lift	3069	121
8 Bucket Pin Height at Carry Position	212	8
9 Reach at Maximum Lift and Dump	758	30
10 Clearance at Maximum Lift and Dump	2309	91
11 Ground Clearance	246	10
12 Departure Angle		37°
13 Maximum Dump Angle		50°
14 Vehicle Width	1676	66
15 Turning Radius from Center – Machine Rear	1451	57
16 Turning Radius from Center – Coupler	1412	56
17 Turning Radius from Center – Bucket	2192	86
18 Maximum Reach with Arms Parallel to Ground	1335	53
19 Rack Back Angle at Maximum Height		87°
20 Bucket Pin Reach at Maximum Lift	358	14.1

247B/257B Series 3 Multi Terrain Loaders / 259B Series 3 Compact Track Loaders

Dimensions



259B Series 3		
	mm	in
1 Length of Track on Ground	1495	59
2 Overall Length of Track	1995	79
3 Length without Bucket	2722	107
4 Length with Bucket on Ground	3432	135
5 Height to Top of Cab	1986	78
6 Maximum Overall Height	3872	152
7 Bucket Pin Height at Maximum Lift	3046	120
8 Bucket Pin Height at Carry Position	195	8
9 Reach at Maximum Lift and Dump	740	29
10 Clearance at Maximum Lift and Dump	2243	88
11 Ground Clearance	222	9
12 Departure Angle	35°	
13 Maximum Dump Angle	49.5°	
14 Vehicle Width (320 mm/12.6 in tracks)	1676	66
Vehicle Width (400 mm/15.7 in tracks)	1755	69
15 Turning Radius from Center – Machine Rear	1471	58
16 Turning Radius from Center – Coupler	1393	55
17 Turning Radius from Center – Bucket	2174	86
18 Maximum Reach with Arms Parallel to Ground	1338	53
19 Rack Back Angle at Maximum Height	87°	
20 Bucket Pin Reach at Maximum Lift	309	12.1