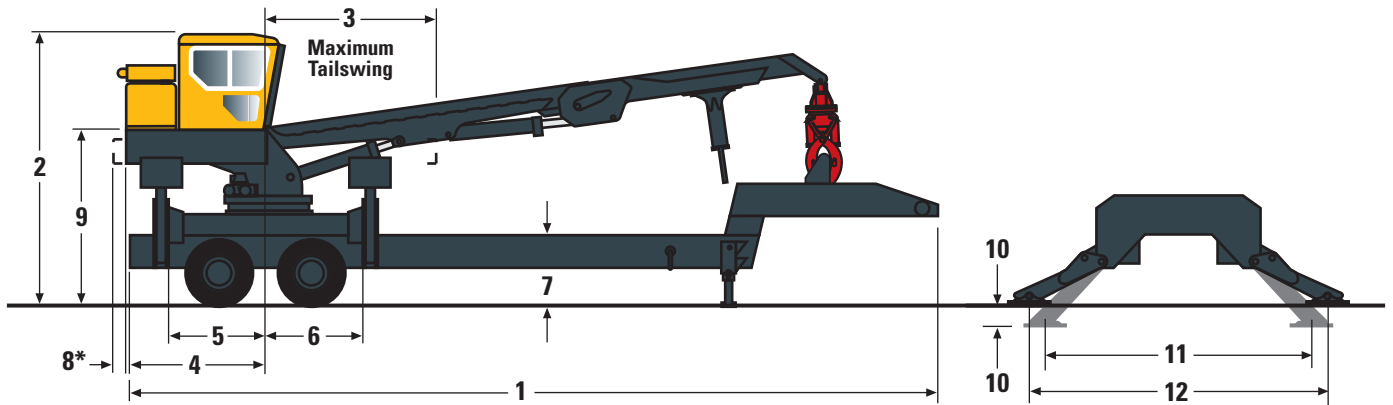


519/529/559/559B/569/579 Knuckleboom Loaders

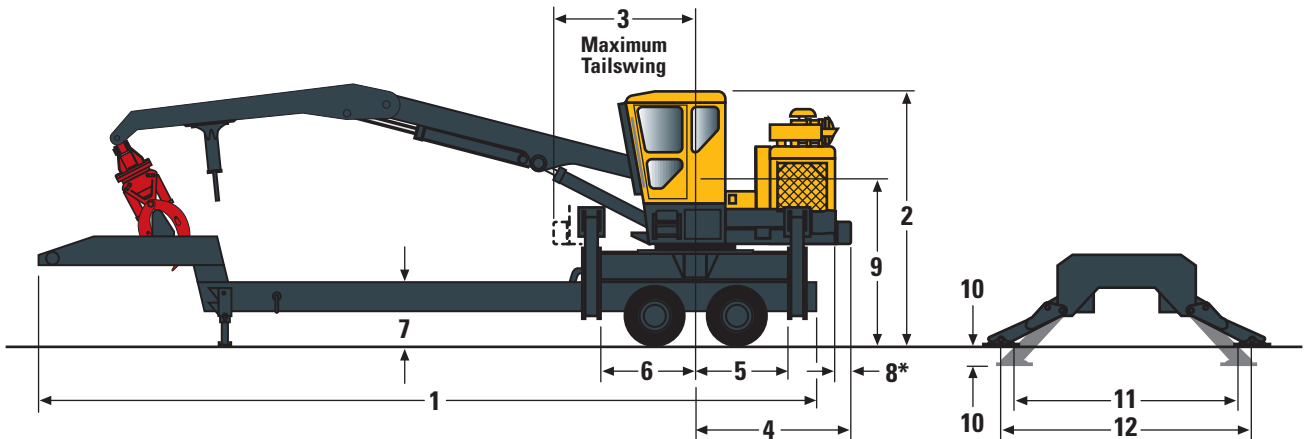
Machine Dimensions for 519, 529 and 559/559B



	519		529		559/559B		569		579	
	cm	in	cm	in	cm	in	cm	in	cm	in
1	1127.8	444.00	1219.2	480.00	1219.2	480.00	1219.2	480.00	1219.2	480.00
2	401.3	158.00	404.5	159.25	401.6	158.10	398.8	157.00	398.8	157.00
3	256.5	101.00	248.9	98.00	252.7	99.50	248.9	98.00	248.9	98.00
4	228.6	90.00	232.0	91.34	227.8	89.70	238.1	93.75	238.1	93.75
5	137.2	54.00	152.4	60.00	152.4	60.00	152.4	60.00	152.4	60.00
6	137.2	54.00	152.4	60.00	152.4	60.00	152.4	60.00	152.4	60.00
7	99.1	39.00	99.1	39.00	99.1	39.00	99.1	39.00	99.1	39.00
8*	10.2	4.00	24.1	9.50	7.6	3.00	27.3	10.75	27.3	10.75
9	238.8	94.00	246.4	97.00	246.4	97.00	269.2	106.00	269.2	106.00
10	35.6	14.00	36.0	14.18	41.9	16.50	39.4	15.50	39.4	15.50
11	416.6	164.00	392.0	154.35	425.4	167.47	454.7	179.00	454.7	179.00
12	457.2	180.00	447.0	176.00	495.3	195.70	495.3	195.00	495.3	195.00

* Add for counterweight

Machine Dimensions for 569 and 579



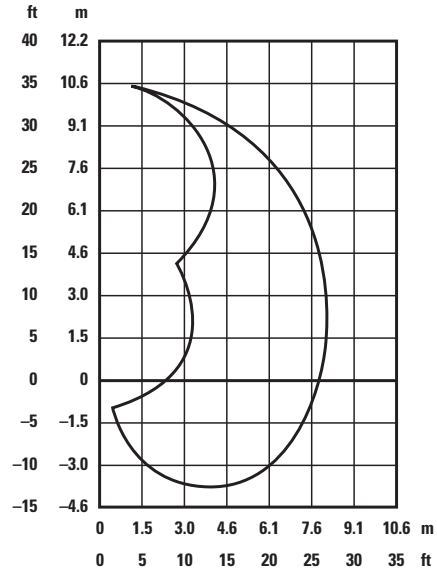
519/529/559/559B/569/579 Knuckleboom Loaders

Machine Lift Charts – 8.2 m (27 ft) Knuckleboom – 519 Model

Notes

Do not attempt to lift or hold any load that is greater than the rated values over the end or side. The weight of the grapple and all lifting accessories must be deducted from lift capacities shown.

1. The over end capacities and over side capacities do not exceed 87% of hydraulic limited capacity or 75% of stability limited capacity.
2. The lift point is located at the grapple knuckle pin.
3. Lift capacities are based on the machine standing on firm, uniform supporting surface. User must make allowances for job site conditions.
4. Operator should be fully acquainted with the Operator's Manual and all safety instructions furnished by Caterpillar Inc. prior to operating the machine.
5. Lift capacities are in compliance with SAE J2417, "Lift Capacity Calculation Method – Knuckleboom Log Loaders and Certain Forestry Equipment."



	3 m (10 ft)		4.6 m (15 ft)		6.1 m (20 ft)		7.6 m (25 ft)		Max Reach		
	kg	lb	kg	lb	kg	lb	kg	lb	kg	lb	
9.1 m (30 ft)			4574.6	10,085							100% Hyd
			3979.9	8,774							Over End
			3979.9	8,774							Over Side
7.6 m (25 ft)			5208.7	11,483	4076.5	8,978					100% Hyd
			4531.5	9,990	3543.1	7,811					Over End
			4531.5	9,990	3543.1	7,811					Over Side
6.1 m (20 ft)			5246.8	11,567	4611.3	10,166					100% Hyd
			4564.6	10,063	4011.6	8,844					Over End
			4564.6	10,063	4011.6	8,844					Over Side
4.6 m (15 ft)			5673.2	12,507	4742.4	10,455	3954.5	8,718	1850.2	4,079	100% Hyd
			4935.6	10,881	4125.9	9,096	3440.5	7,585	1609.8	3,549	Over End
			4935.6	10,881	4125.9	9,096	3215.1	*7,088	1609.8	3,549	Over Side
3 m (10 ft)			6305.5	13,901	5545.7	12,226	3920.5	8,643	1776.5	3,917	100% Hyd
			5485.8	12,094	4824.9	10,637	3410.6	7,519	1545.9	3,408	Over End
			5485.8	12,094	4582.7	*10,103	3188.3	*7,029	1545.9	3,408	Over Side
1.5 m (5 ft)			8720.0	*19,224	6520.5	14,375	4068.3	8,969	1771.3	3,905	100% Hyd
			7586.5	*16,725	5672.7	12,506	3539.4	7,803	1540.9	3,397	Over End
			7369.7	*16,247	4106.9	*9,054	3152.5	*6,950	1540.9	3,397	Over Side
0 m (0 ft)	4373.2	9,641	8341.2	*18,389	6061.9	13,364	3553.0	7,833			100% Hyd
	3804.8	8,388	7256.7	*15,998	5274.0	11,627	3091.3	6,815			Over End
	3804.8	8,388	7186.4	*15,843	4395.4	*9,690	3091.3	6,815			Over Side
-1.5 m (-5 ft)	6371.3	14,046	6789.5	14,968	4688.8	10,337					100% Hyd
	5543.0	12,220	5906.8	13,022	4079.2	8,993					Over End
	5543.0	12,220	5906.8	13,022	4079.2	8,993					Over Side
-3 m (-10 ft)	4980.1	10,979	3743.6	8,253	1100.0	2,425					100% Hyd
	4332.8	9,552	3256.8	7,180	957.1	2,110					Over End
	4332.8	9,552	3256.8	7,180	957.1	2,110					Over Side

* Stability limited capacities

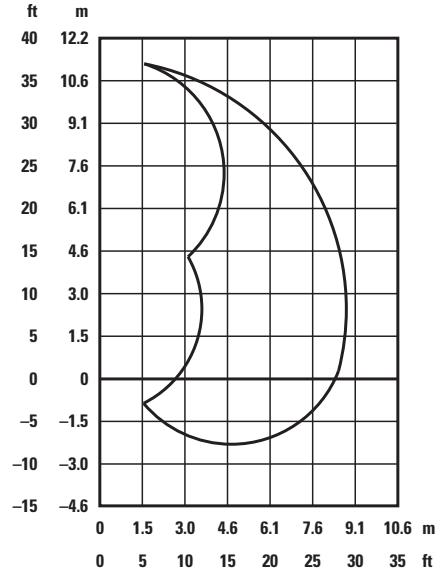
519/529/559/559B/569/579 Knuckleboom Loaders

Machine Lift Charts – 8.8 m (29 ft) Knuckleboom – 529 Model

Notes

Do not attempt to lift or hold any load that is greater than the rated values over the end or side. The weight of the grapple and all lifting accessories must be deducted from lift capacities shown.

1. The over end capacities and over side capacities do not exceed 87% of hydraulic limited capacity or 75% of stability limited capacity.
2. The lift point is located at the grapple knuckle pin.
3. Lift capacities are based on the machine standing on firm, uniform supporting surface. User must make allowances for job site conditions.
4. Operator should be fully acquainted with the Operator's Manual and all safety instructions furnished by Caterpillar Inc. prior to operating the machine.
5. Lift capacities are in compliance with SAE J2417, "Lift Capacity Calculation Method – Knuckleboom Log Loaders and Certain Forestry Equipment."



	3 m (10 ft)		4.6 m (15 ft)		6.1 m (20 ft)		7.6 m (25 ft)		Max Reach		
	kg	lb	kg	lb	kg	lb	kg	lb	kg	lb	
9.1 m (30 ft)			5591.9	12,328							100% Hyd
			4864.8	10,725							Over End
			4864.8	10,725							Over Side
7.6 m (25 ft)			5854.1	12,906	5136.6	11,324					100% Hyd
			5093.1	11,228	4468.8	9,852					Over End
			5093.1	11,228	4468.8	9,852					Over Side
6.1 m (20 ft)			5896.7	13,000	5481.7	12,085	4159.5	9,170			100% Hyd
			5130.2	11,310	4769.2	10,514	3618.8	7,978			Over End
			5130.2	11,310	4769.2	10,514	3618.8	7,978			Over Side
4.6 m (15 ft)			6384.8	14,076	5641.8	12,438	4650.8	10,253	2379.5	5,246	100% Hyd
			5554.7	12,246	4908.4	10,821	4046.1	8,920	2070.2	4,564	Over End
			5554.7	12,246	4908.4	10,821	4046.1	8,920	2070.2	4,564	Over Side
3 m (10 ft)			7557.4	16,661	6542.2	14,423	5072.6	11,183	2344.2	5,168	100% Hyd
			6574.8	14,495	5691.7	12,548	4413.1	9,729	2039.4	4,496	Over End
			6574.8	14,495	5691.7	12,548	4413.1	9,729	2039.4	4,496	Over Side
1.5 m (5 ft)			8857.8	19,528	6573.1	14,491	4963.7	10,943	2355.9	5,194	100% Hyd
			7706.2	16,989	5718.5	12,607	4318.2	9,520	2049.8	4,519	Over End
			7706.2	16,989	5718.5	12,607	4318.2	9,520	2049.8	4,519	Over Side
0 m (0 ft)	6924.5	15,266	8425.6	18,575	6101.3	13,451	4259.8	9,391			100% Hyd
	6024.2	13,281	7330.2	16,160	5308.1	11,702	3705.9	8,170			Over End
	6024.2	13,281	7330.2	16,160	5308.1	11,702	3705.9	8,170			Over Side
-1.5 m (-5 ft)	7980.1	17,593	6807.2	15,007	4782.3	10,543					100% Hyd
	6942.8	15,306	5922.2	13,056	4160.4	9,172					Over End
	6942.8	15,306	5922.2	13,056	4160.4	9,172					Over Side

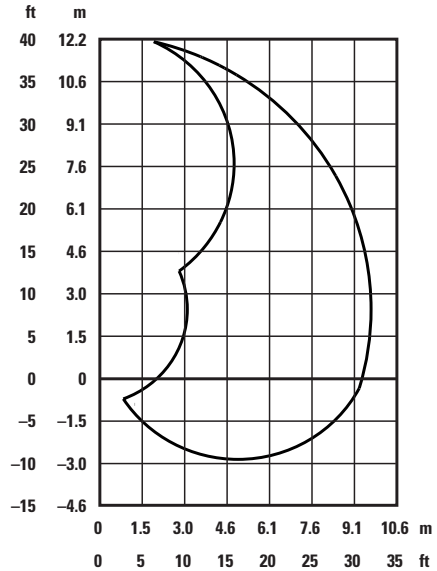
519/529/559/559B/569/579 Knuckleboom Loaders

Machine Lift Charts – 9.8 m (32 ft) Knuckleboom – 559/559B Model

Notes

Do not attempt to lift or hold any load that is greater than the rated values over the end or side. The weight of the grapple and all lifting accessories must be deducted from lift capacities shown.

1. The over end capacities and over side capacities do not exceed 87% of hydraulic limited capacity or 75% of stability limited capacity.
2. The lift point is located at the grapple knuckle pin.
3. Lift capacities are based on the machine standing on firm, uniform supporting surface. User must make allowances for job site conditions.
4. Operator should be fully acquainted with the Operator's Manual and all safety instructions furnished by Caterpillar Inc. prior to operating the machine.
5. Lift capacities are in compliance with SAE J2417, "Lift Capacity Calculation Method – Knuckleboom Log Loaders and Certain Forestry Equipment."



	3 m (10 ft)		4.6 m (15 ft)		6.1 m (20 ft)		7.6 m (25 ft)		9.1 m (30 ft)		9.8 m (32 ft)		
	kg	lb	kg	lb	kg	lb	kg	lb	kg	lb	kg	lb	
10.6 m (35 ft)			5687.1	12,538									100% Hyd
			4947.8	10,908									Over End
			4947.8	10,908									Over Side
9.1 m (30 ft)					5398.7	11,902							100% Hyd
					4696.9	10,355							Over End
					4696.9	10,355							Over Side
7.6 m (25 ft)					5630.9	12,414	4732.4	10,433					100% Hyd
					4898.8	10,800	4117.3	9,077					Over End
					4898.8	10,800	4117.3	9,077					Over Side
6.1 m (20 ft)					5751.1	12,679	5133.3	11,317					100% Hyd
					5003.6	11,031	4466.1	9,846					Over End
					5003.6	11,031	4466.1	9,846					Over Side
4.6 m (15 ft)			7265.2	16,017	6594.8	14,539	5594.2	12,333	4182.6	9,221	2665.8	5,877	100% Hyd
			6320.8	13,935	5737.5	12,649	4867.1	10,730	3638.7	8,022	2319.2	5,113	Over End
			6320.8	13,935	5737.5	12,649	4867.1	10,730	3631.9	*8,007	2319.2	5,113	Over Side
3 m (10 ft)			9105.9	20,075	7195.8	15,864	5946.1	13,109	4455.2	9,822	2691.2	5,933	100% Hyd
			7921.9	17,465	6260.5	13,802	5173.6	11,405	3875.9	8,522	2341.4	5,162	Over End
			7921.9	17,465	6260.5	13,802	5173.6	*10,851	3582.2	7,897	2341.4	5,162	Over Side
1.5 m (5 ft)			10 155.1	22,300	7591.8	16,737	6015.5	13,262	4253.4	9,377	2797.8	6,168	100% Hyd
			8800.2	19,401	6604.8	14,561	5233.5	11,538	3700.5	8,158	2433.9	5,366	Over End
			8800.2	19,401	6604.8	14,561	4776.4	*10,530	3526.7	*7,775	2433.9	5,366	Over Side
0 m (0 ft)	8249.5	18,187	10 288.4	22,682	7553.7	16,653	5758.4	12,695	3705.9	8,170			100% Hyd
	7177.2	15,823	8950.8	19,733	6571.7	14,488	5009.9	11,045	3224.2	7,108			Over End
	7177.2	15,823	8950.8	19,733	6571.7	14,488	4667.5	*10,290	3224.2	7,108			Over Side
-1.5 m (-5 ft)	8217.3	18,116	9281.9	20,463	6782.6	14,953	4870.2	10,737					100% Hyd
	7149.1	15,761	8075.4	17,803	5900.8	13,009	4237.0	9,341					Over End
	7149.1	15,761	8075.4	17,803	5900.8	13,009	4237.0	9,341					Over Side

* Stability limited capacities

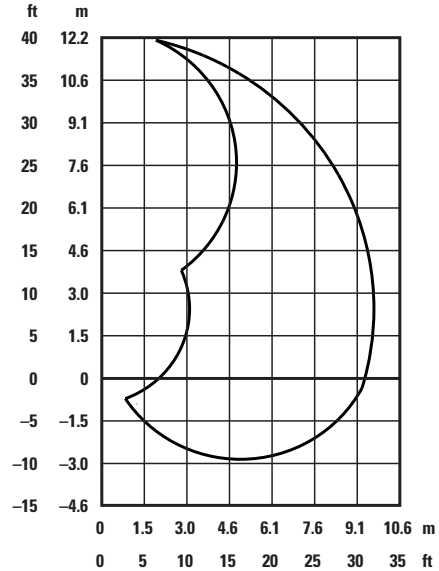
519/529/559/559B/569/579 Knuckleboom Loaders

Machine Lift Charts – 9.9 m (32 ft 6 in) Knuckleboom – 569 Model

Notes

Do not attempt to lift or hold any load that is greater than the rated values over the end or side. The weight of the grapple and all lifting accessories must be deducted from lift capacities shown.

1. The over end capacities and over side capacities do not exceed 87% of hydraulic limited capacity or 75% of stability limited capacity.
2. The lift point is located at the grapple knuckle pin.
3. Lift capacities are based on the machine standing on firm, uniform supporting surface. User must make allowances for job site conditions.
4. Operator should be fully acquainted with the Operator's Manual and all safety instructions furnished by Caterpillar Inc. prior to operating the machine.
5. Lift capacities are in compliance with SAE J2417, "Lift Capacity Calculation Method – Knuckleboom Log Loaders and Certain Forestry Equipment."



	3 m (10 ft)		4.6 m (15 ft)		6.1 m (20 ft)		7.6 m (25 ft)		9.1 m (30 ft)		Max Reach		
	kg	lb	kg	lb	kg	lb	kg	lb	kg	lb	kg	lb	
10.6 m (35 ft)			5286.7	11,655									100% Hyd
			4599.5	10,140									Over End
			4599.5	10,140									Over Side
9.1 m (30 ft)					4972.9	10,963							100% Hyd
					4326.4	9,538							Over End
					4326.4	9,538							Over Side
7.6 m (25 ft)					5758.4	12,695	4410.8	9,724					100% Hyd
					5010.0	11,045	3937.4	8,460					Over End
					5010.0	11,045	3937.4	8,460					Over Side
6.1 m (20 ft)					6363.5	14,029	5428.7	11,968					100% Hyd
					5536.2	12,205	4722.9	10,412					Over End
					5536.2	12,205	4722.9	10,412					Over Side
4.6 m (15 ft)			7299.3	16,092	6877.5	15,162	6073.2	13,389	2767.9	6,102			100% Hyd
			6350.4	14,000	5983.4	13,191	5283.5	11,648	2408.2	5,309			Over End
			6350.4	14,000	5983.4	13,191	5283.5	11,648	2408.2	5,309			Over Side
3 m (10 ft)			9814.5	21,637	8452.4	18,634	6934.2	15,287	3974.0	8,761	2324.2	5,124	100% Hyd
			8538.6	18,824	7353.8	16,212	6032.9	13,300	3457.3	7,622	2022.1	4,458	Over End
			8538.6	18,824	7353.8	16,212	6032.9	13,300	3457.3	7,622	2022.1	4,458	Over Side
1.5 m (5 ft)	18 436.1	40,644	12 083.4	26,639	9112.8	20,090	7295.7	16,084	4668.4	10,292	2366.0	5,216	100% Hyd
	16 039.3	35,360	10 512.6	23,176	7928.0	17,478	6347.2	13,993	4061.5	8,954	2058.4	4,538	Over End
	16 039.3	35,360	10 512.6	23,176	7928.0	17,478	6347.2	13,993	4061.5	8,954	2058.4	4,538	Over Side
0 m (0 ft)	10 192.8	22,471	12 622.8	27,828	9241.6	20,374	7086.8	15,644	4947.4	10,907	2480.3	5,468	100% Hyd
	8867.9	19,550	10 981.6	24,210	8040.1	17,725	6173.5	13,610	4304.2	9,489	2157.8	4,757	Over End
	8867.9	19,550	10 981.6	24,210	8040.1	17,725	6173.5	13,610	4304.2	9,489	2157.8	4,757	Over Side
-1.5 m (-5 ft)	9419.5	20,766	11 628.5	25,636	8447.8	18,624	6120.4	13,493	4361.8	9,616			100% Hyd
	8194.7	18,066	10 116.6	22,303	7349.7	16,203	5324.8	11,739	3794.8	8,366			Over End
	8194.7	18,066	10 116.6	22,303	7349.7	16,203	5324.8	11,739	3794.8	8,366			Over Side

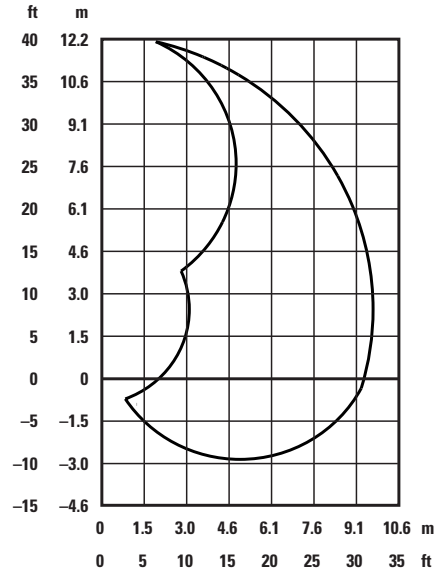
519/529/559/559B/569/579 Knuckleboom Loaders

Machine Lift Charts – 9.9 m (32 ft 6 in) Knuckleboom – 579 Model

Notes

Do not attempt to lift or hold any load that is greater than the rated values over the end or side. The weight of the grapple and all lifting accessories must be deducted from lift capacities shown.

1. The over end capacities and over side capacities do not exceed 87% of hydraulic limited capacity or 75% of stability limited capacity.
2. The lift point is located at the grapple knuckle pin.
3. Lift capacities are based on the machine standing on firm, uniform supporting surface. User must make allowances for job site conditions.
4. Operator should be fully acquainted with the Operator's Manual and all safety instructions furnished by Caterpillar Inc. prior to operating the machine.
5. Lift capacities are in compliance with SAE J2417, "Lift Capacity Calculation Method – Knuckleboom Log Loaders and Certain Forestry Equipment."



	3 m (10 ft)		4.6 m (15 ft)		6.1 m (20 ft)		7.6 m (25 ft)		9.1 m (30 ft)		Max Reach		
	kg	lb	kg	lb	kg	lb	kg	lb	kg	lb	kg	lb	
10.6 m (35 ft)			6514.1	14,361									100% Hyd
			5667.3	12,494									Over End
			5667.3	12,494									Over Side
9.1 m (30 ft)					6142.2	13,541							100% Hyd
					5343.8	11,781							Over End
					5343.8	11,781							Over Side
7.6 m (25 ft)					6077.8	13,399	5470.4	12,060					100% Hyd
					5287.6	11,657	4759.2	10,492					Over End
					5287.6	11,657	4759.2	10,492					Over Side
6.1 m (20 ft)					6246.1	13,770	5763.0	12,705	3497.7	7,711			100% Hyd
					5434.1	11,980	5013.6	11,053	3043.2	6,709			Over End
					5434.1	11,980	5013.6	11,053	3043.2	6,709			Over Side
4.6 m (15 ft)			7689.4	16,952	7085.2	15,620	6041.0	13,318	4944.0	10,914	2967.0	6,541	100% Hyd
			6689.7	14,748	6164.0	13,589	5255.9	11,587	4306.9	9,495	2581.4	5,691	Over End
			6689.7	14,748	6164.0	13,589	5255.9	11,587	4306.9	9,495	2581.4	5,691	Over Side
3 m (10 ft)			10 201.0	22,489	9232.1	20,353	7230.4	15,940	5247.7	11,569	3019.2	6,656	100% Hyd
			8874.7	19,565	8031.9	17,707	6290.5	13,868	4565.5	10,065	2626.8	5,791	Over End
			8874.7	19,565	8031.9	17,707	6290.5	13,868	4565.5	10,065	2626.8	5,791	Over Side
1.5 m (5 ft)	21 356.8	47,083	14 054.3	30,984	10 646.4	23,471	8611.6	18,885	5083.1	11,221	3164.3	6,976	100% Hyd
	18 580.4	40,962	12 227.2	26,956	9262.5	20,420	7452.6	16,430	4428.0	9,762	2752.9	6,069	Over End
	18 580.4	40,962	12 227.2	26,956	9262.5	20,420	6731.0	*14,839	4428.0	9,762	2752.9	6,069	Over Side
0 m (0 ft)	10 070.8	22,202	14 724.3	32,461	10 824.7	23,864	8356.2	18,422	4487.0	9,892			100% Hyd
	8761.7	19,316	12 810.1	28,241	9417.6	20,762	7269.8	16,027	3903.7	8,606			Over End
	8761.7	19,316	12 810.1	28,241	9417.6	20,762	6630.3	*14,617	3903.7	8,606			Over Side
-1.5 m (-5 ft)	9314.2	20,534	13 622.5	30,032	9940.6	21,915	7256.7	15,998					100% Hyd
	8103.6	17,865	11 851.7	26,128	8648.3	19,066	6313.2	13,918					Over End
	8103.6	17,865	11 851.7	26,128	8648.3	19,066	6313.2	13,918					Over Side

* Stability limited capacities