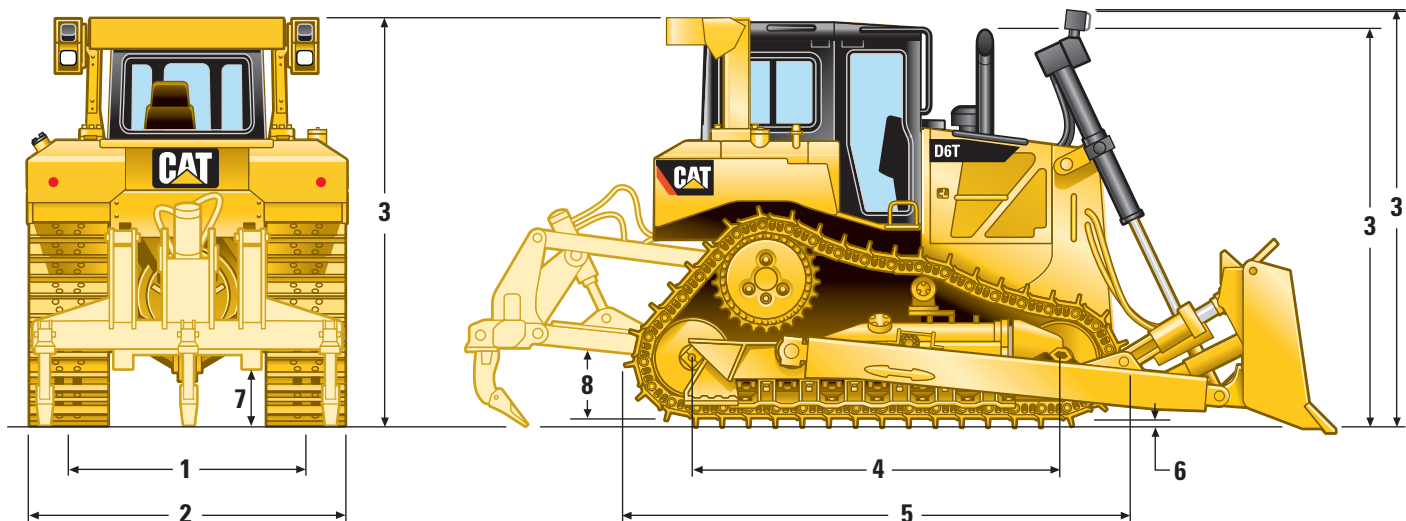


D6T Track-Type Tractor

Dimensions

All dimensions are approximate.



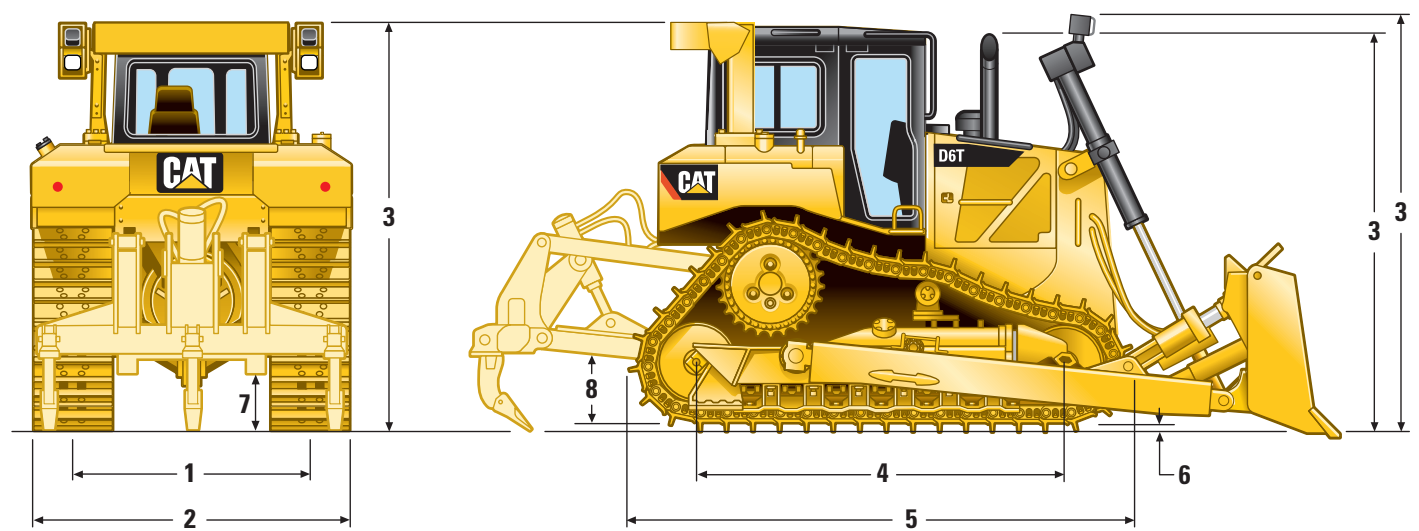
	XL		XL VPAT	
1 Track gauge	1880 mm	6 ft 2 in	2134 mm	7 ft 0 in
2 Width of tractor				
Over trunnions	2640 mm	8 ft 8 in	—	—
Without trunnions (std. track)	2440 mm	8 ft 0 in	2692 mm	8 ft 10 in
3 Machine height from tip of grouser:				
Stack	3126 mm	10 ft 3 in	3126 mm	10 ft 3 in
ROPS	3169 mm	10 ft 5 in	3169 mm	10 ft 5 in
Premium Light Package	3310 mm	10 ft 10 in	3310 mm	10 ft 10 in
4 Length of track on ground	2840 mm	9 ft 4 in	2840 mm	9 ft 4 in
5 Length of basic tractor	3860 mm	12 ft 8 in	3860 mm	12 ft 8 in
With following attachments add:				
Drawbar	182 mm	7 in	182 mm	7 in
Ripper Multi-Shank (tip at ground line)	1370 mm	4 ft 6 in	1370 mm	4 ft 6 in
Winch	517 mm	20 in	517 mm	20 in
S Blade	—	—	—	—
SU Blade	1271 mm	4 ft 2 in	—	—
A Blade	1341 mm	4 ft 3 in	—	—
VPAT Blade	—	—	1504 mm	4 ft 11 in
6 Height of grouser	65 mm	2.6 in	65 mm	2.6 in
7 Ground clearance	384 mm	15 in	384 mm	15 in
Track pitch	203 mm	8 in	203 mm	8 in
Number of shoes per side	41	—	41	—
Number of rollers per side	7	—	7	—
Standard shoe	560 mm	22 in	560 mm	22 in
Ground contact area (std. track)	3.18 m ²	4,929 in ²	3.18 m ²	4,929 in ²
Ground pressure*	57.2 kPa	8.30 psi	64.7 kPa	9.38 psi
8 Drawbar height	576 mm	23 in	576 mm	23 in
From ground face of shoe	511 mm	20 in	511 mm	20 in

* XL and XW with SU blade, LGP with S blade with no rear attachments unless otherwise specified and calculated per ISO 16754.

D6T Track-Type Tractor

Dimensions

All dimensions are approximate.



	XW		XW VPAT		LGP		LGP VPAT	
1 Track gauge	2032 mm	6 ft 8 in	2286 mm	7 ft 6 in	2286 mm	7 ft 6 in	2286 mm	7 ft 6 in
2 Width of tractor								
Over trunnions	2950 mm	9 ft 8 in	—	—	3480 mm	11 ft 5 in	—	—
Without trunnions (std. track)	2794 mm	9 ft 2 in	2997 mm	9 ft 10 in	3193 mm	10 ft 6 in	3150 mm	10 ft 4 in
3 Machine height from tip of grouser:								
Stack	3126 mm	10 ft 3 in	3126 mm	10 ft 3 in	3176 mm	10 ft 5 in	3176 mm	10 ft 5 in
ROPS	3169 mm	10 ft 5 in	3169 mm	10 ft 5 in	3219 mm	10 ft 7 in	3219 mm	10 ft 7 in
Premium Light Package	3310 mm	10 ft 10 in	3310 mm	10 ft 10 in	3360 mm	11 ft 0 in	3360 mm	11 ft 0 in
4 Length of track on ground	2840 mm	9 ft 4 in	2840 mm	9 ft 4 in	3250 mm	10 ft 8 in	3250 mm	10 ft 8 in
5 Length of basic tractor	3860 mm	12 ft 8 in	3860 mm	12 ft 8 in	4247 mm	13 ft 11 in	4247 mm	13 ft 11 in
With following attachments add:								
Drawbar	182 mm	7 in	182 mm	7 in	—	—	—	—
Ripper Multi-Shank (tip at ground line)	1370 mm	4 ft 6 in	1370 mm	4 ft 6 in	1370 mm	4 ft 6 in	1370 mm	4 ft 6 in
Winch	517 mm	20 in	517 mm	20 in	397 mm	16 in	397 mm	16 in
S Blade	—	—	—	—	1168 mm	3 ft 10 in	—	—
SU Blade	1271 mm	4 ft 2 in	—	—	—	—	—	—
A Blade	1405 mm	4 ft 7 in	—	—	1475 mm	4 ft 10 in	—	—
VPAT Blade	—	—	1504 mm	4 ft 11 in	—	—	1412 mm	4 ft 8 in
6 Height of grouser	65 mm	2.6 in	65 mm	2.6 in	65 mm	2.6 in	65 mm	2.6 in
7 Ground clearance	384 mm	15 in	384 mm	15 in	434 mm	17 in	434 mm	17 in
Track pitch	203 mm	8 in	203 mm	8 in	203 mm	8 in	203 mm	8 in
Number of shoes per side	41	—	41	—	45	—	45	—
Number of rollers per side	7	—	7	—	8	—	8	—
Standard shoe	760 mm	30 in	710 mm	28 in	915 mm	36 in	785 mm	31 in
Ground contact area (std. track)	4.31 m ²	6,681 in ²	4.03 m ²	6,247 in ²	5.95 m ²	9,223 in ²	5.10 m ²	7,905 in ²
Ground pressure*	43.9 kPa	6.36 psi	52.0 kPa	7.54 psi	33.5 kPa	4.86 psi	42.8 kPa	6.20 psi
8 Drawbar height	576 mm	23 in	576 mm	23 in	626 mm	25 in	626 mm	25 in
From ground face of shoe	511 mm	20 in	511 mm	20 in	561 mm	22 in	561 mm	22 in

* XL and XW with SU blade, LGP with S blade with no rear attachments unless otherwise specified and calculated per ISO 16754.