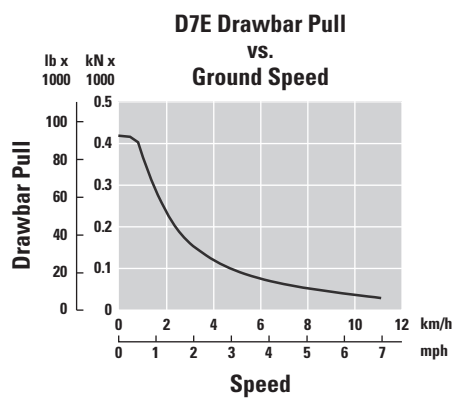


D7E WH Waste Handler

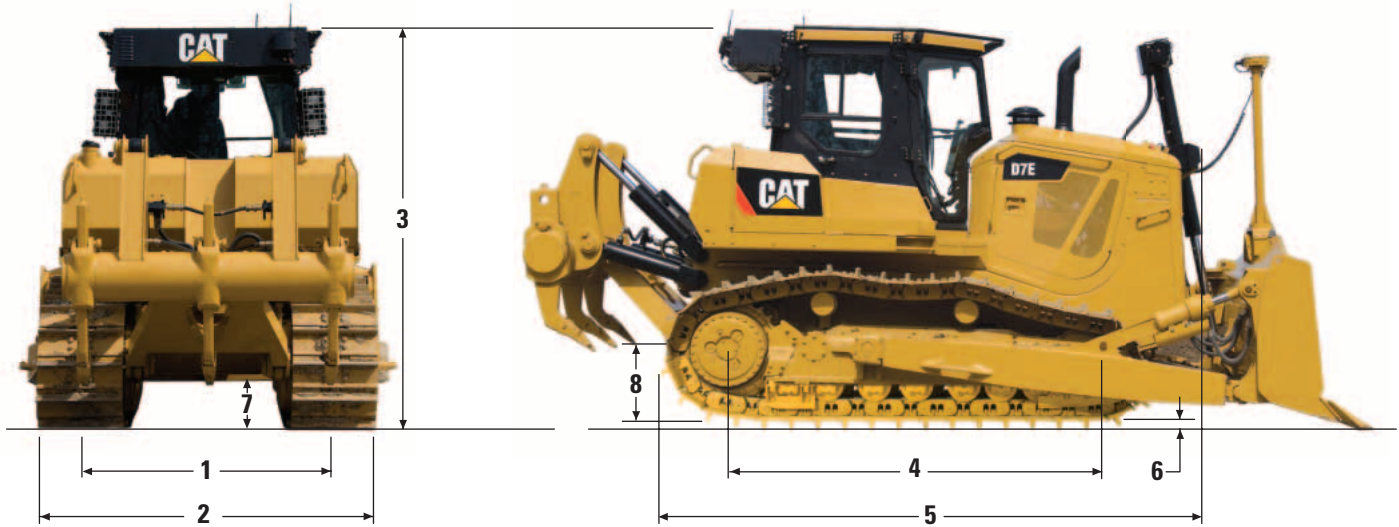
Drawbar Pull



D7E WH Waste Handler

Dimensions

All dimensions are approximate



	STD		LGP	
1 Track Gauge	1981 mm	78 in	2286 mm	90 in
2 Width of Tractor over Trunnions	2880 mm	113 in	3423 mm	135 in
Width of Tractor without Trunnions (std. shoes)	2591 mm	102 in	3200 mm	126 in
3 Machine Height from Tip of Grouser				
Top of Stack	3365 mm	132 in	3365 mm	132 in
Top of Roof-Mounted Precleaner (not shown)	3607 mm	142 in	3505 mm	138 in
From Ground Face of Shoe	3322 mm	131 in	3322 mm	131 in
4 Length of Track on Ground	3016 mm	119 in	3450 mm	136 in
5 Length of Basic Tractor	4608 mm	181 in	4608 mm	181 in
With the following attachments add to basic tractor length:				
Ripper (with tip at ground line)	1391 mm	55 in		N/A
Ripper (with tip fully raised)	1222 mm	48 in		N/A
Winch	1032 mm	41 in	1032 mm	41 in
Drawbar	270 mm	10.6 in	270 mm	10.6 in
S Blade		N/A	977 mm	38 in
SU Blade	1187 mm	47 in		N/A
U Blade	1425 mm	56 in		N/A
6 Height of Grouser	70 mm	2.75 in	70 mm	2.75 in
7 Ground Clearance	472 mm	18.6 in	472 mm	18.6 in
Ground Contact Area (std. shoes)	3.68 m ²	5,698 in ²	6.31 m ²	9,792 in ²
Number of Shoes per Side		40		44
Standard Shoe Width and Type		610 mm		915 mm
		24 in		36 in
		MS		MS
Ground Pressure	0.699 kg/cm ²	9.9 psi	0.446 kg/cm ²	6.3 psi
Pitch	215.9 mm	8.5 in	215.9 mm	8.5 in
Track Rollers/Side		7		8
Number of Carrier Rollers		2		2
8 Drawbar Height (grouser tip to center of clevis)	719 mm	28 in	719 mm	28 in

D7E WH Waste Handler

Bulldozer Specifications

Blade		7SU	7U	7S LGP
Blade Capacity (SAE J1265)*	m ³	14	16,8	12,3
	yd ³	18,4	22	16,1
Width (over end bits)	mm	3.713	3.988	4.545
	ft	12,18	13,08	14,91
Height	mm	1.524	1.553	1.343
	ft	5	5,1	4,4
Digging Depth	mm	586	586	644
	in	23,1	23,1	25,4
Ground Clearance	mm	1.108	1.108	1.264
	in	43,6	43,6	49,8
Maximum Tilt	mm	987	1.085	785
	in	38,9	42,7	30,9
Weight**	kg	4.380	4.540	3.860
	lb	9.636	9.988	8.492

* Capacities calculated with a trash rack installed.

** Weight includes cylinder mounting, lift cylinder and lines, blade, push arms, trunnions, and cylinder lines (Tilt).

Undercarriage

Type	Heavy Duty Undercarriage			
Configuration	STD		LGP	
Number of Rollers (each side)	7		8	
Number of Shoes (each side)	40		44	
Pitch	216 mm	8.5 in	216 mm	8.5 in
Shoe Width	610 mm	24 in	915 mm	36 in
Grouser Height (MS)	70 mm	2.75 in	70 mm	2.75 in
Length of Track on Ground (Heavy Duty)	3016 mm	119 in	3450 mm	136 in
Track Gauge	1981 mm	78 in	2286 mm	90 in
Ground Contact Area (Heavy Duty)	3.68 m ²	5,698 in ²	6.31 m ²	9,792 in ²
Ground Pressure (Heavy Duty)	69.5 kPa	10.1 psi	44.3 kPa	6.4 psi
Ground Clearance	472 mm	18.6 in	472 mm	18.6 in