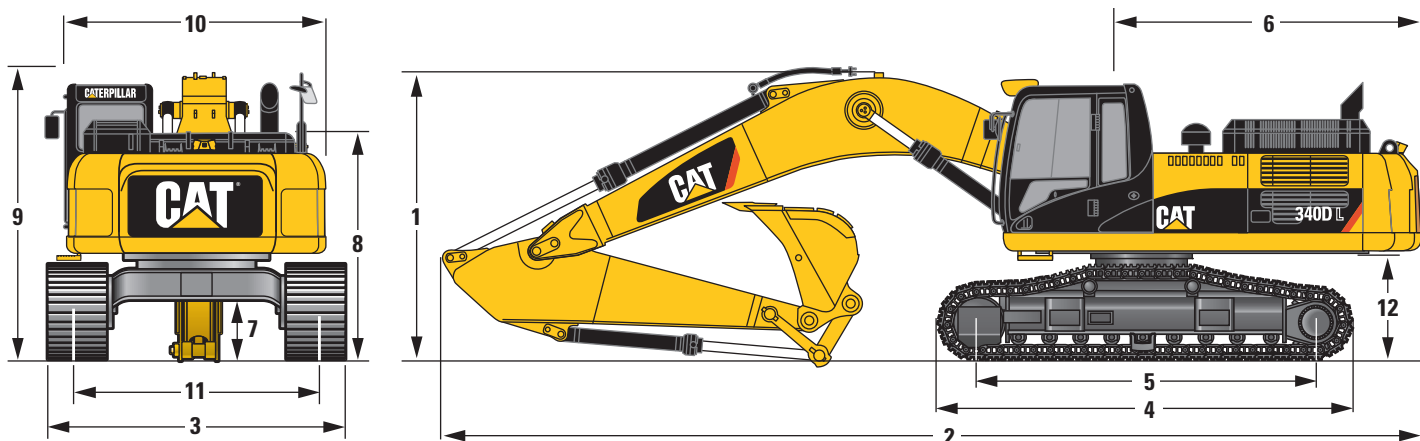


340D L Hydraulic Excavator

Dimensions

All dimensions are approximate.



mm

1 Shipping Height (with bucket)

Reach Boom

2800 mm Stick

3690

3200 mm Stick

3590

Mass Excavation Boom

2550 mm Stick

3700

2 Shipping Length

Reach Boom

2800 mm Stick

11 200

3200 mm Stick

11 150

Mass Excavation Boom

2550 mm Stick

10 860

3 Track Width

600 mm Shoes

3520

4 Track Length

5066

5 Length to Centers of Rollers

4040

6 Tail Swing Radius

3500

7 Ground Clearance

743

8 Body Height

2993

9 Cab Height

Without FOGS

3420

10 Body Width

2960

11 Track Gauge

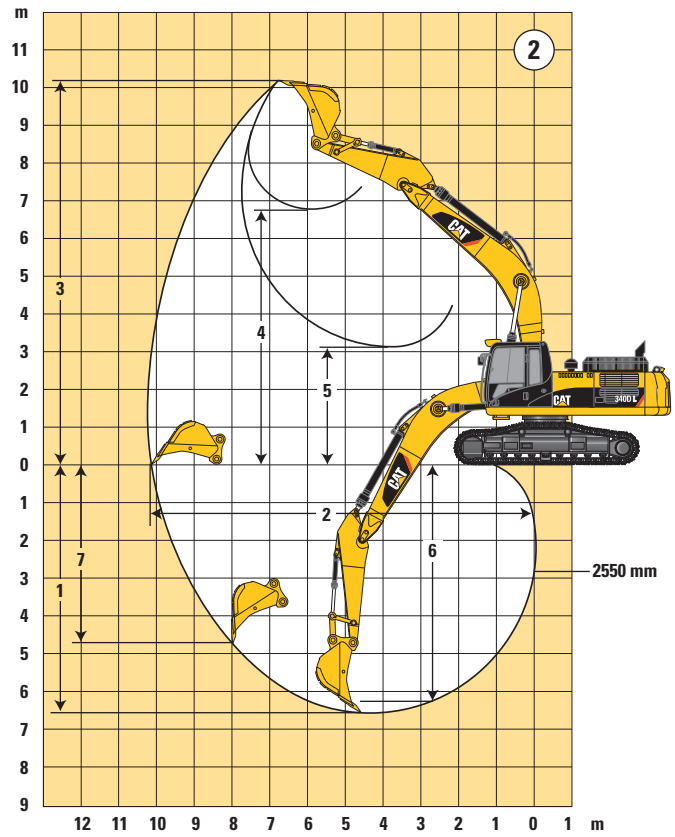
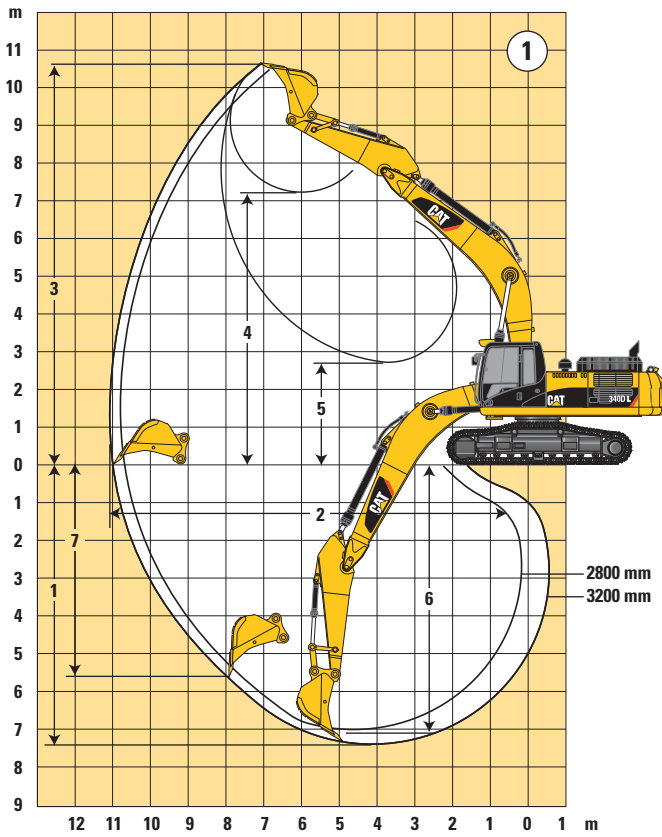
2920

12 Counterweight Clearance

1500

340D L Hydraulic Excavator

Working Ranges



1

**HD Reach Boom
(6500 mm)**

2

**Mass Excavation Boom
(6180 mm)**

Stick Type		R2.8DB	R3.2DB	M2.5TB
Stick Length	mm	2800	3200	2550
1 Maximum Digging Depth	mm	6922	7322	6434
2 Maximum Reach at Ground Level	mm	10 780	11 084	10 267
3 Maximum Cutting Height	mm	10 620	10 550	10 260
4 Maximum Loading Height	mm	7274	7277	6833
5 Minimum Loading Height	mm	3177	2771	3140
6 Maximum Digging Depth 2500 mm Level Bottom	mm	6645	7035	6255
7 Maximum Vertical Wall Digging Depth	mm	5650	5712	4820
Bucket Tip Radius	mm	1870	1870	1956
Bucket Forces (ISO 6015)	kN	176	176	218
Stick Forces (ISO 6015)	kN	175	158	180

340D L Hydraulic Excavator

Machine and Major Component Weights

Actual weights and ground pressures will depend on final machine configuration.

Stick Type		HD Reach Boom 6500 mm		Mass Excavation Boom 6180 mm
		R2.8DB	R3.2DB	M2.5TB
Stick Length	mm	2800	3200	2550
Bucket Weight	kg	1910	1910	2290
Bucket Capacity	m ³	1.88	1.88	2.14
Bucket Width/Type	mm	1570	1570	1551
Operating Weight*	kg	38 080	38 230	38 585
Ground Pressure	bar	0.71	0.71	0.71
Stick Weight (without bucket cylinder)	kg	1190	1260	1310
Boom Weight (without stick cylinder)	kg		3020	2800
Upperstructure (without counterweight)	kg		8710	8710
Undercarriage	kg		14 790	14 790
Counterweight	kg		6260	6260

340D L Hydraulic Excavator

Lift Capacities – HD Reach Boom (6500 mm)**

All weights are in kg, without bucket, with quick coupler, heavy lift on.



Medium Short Stick – 2800 mm

Reach (m)	Unit	1.5 m		3.0 m		4.5 m		6.0 m		7.5 m		9.0 m		Load at Maximum Reach		m
		Front	Side	Front	Side	Front	Side	Front	Side	Front	Side	Front	Side	Front	Side	
9.0 m	kg													*7770	*7770	6.66
7.5 m	kg									*7750	*7750			*7150	*7150	7.92
6.0 m	kg									*7940	*7940			*6940	6110	8.74
4.5 m	kg					*12 670	*12 670	*9960	*9960	*8590	7770	*7890	5720	*6980	5450	9.24
3.0 m	kg					*15 930	*15 930	*11 530	10 460	*9410	7450	7900	5580	7240	5110	9.48
1.5 m	kg					*18 070	15 210	*12 830	9930	*10 150	7160	7740	5430	7140	5010	9.48
0 m	kg					*18 650	14 820	*13 540	9600	10 020	6950	7640	5340	7360	5140	9.23
-1.5 m	kg			*13 370	*13 370	*18 130	14 770	*13 510	9470	9930	6870			7980	5570	8.72
-3.0 m	kg			*18 860	*18 860	*16 630	14 930	*12 610	9540	*9620	6940			*8810	6490	7.90
-4.5 m	kg			*18 230	*18 230	*13 730	*13 730	*10 240	9830					*8690	8560	6.63

Medium Stick – 3200 mm

Reach (m)	Unit	1.5 m		3.0 m		4.5 m		6.0 m		7.5 m		9.0 m		Load at Maximum Reach		m
		Front	Side	Front	Side	Front	Side	Front	Side	Front	Side	Front	Side	Front	Side	
9.0 m	kg													*6080	*6080	7.07
7.5 m	kg									*7190	*7190			*5670	*5670	8.27
6.0 m	kg									*7490	*7490	*5950	5870	*5550	*5550	9.05
4.5 m	kg							*9400	*9400	*8190	7840	*7530	5770	*5630	5190	9.54
3.0 m	kg					*15 030	*15 030	*11 030	10 570	*9070	7500	7920	5600	*5870	4860	9.78
1.5 m	kg					*17 520	15 370	*12 470	9990	*9890	7180	7740	5430	*6320	4760	9.77
0 m	kg			*8280	*8280	*18 520	14 830	*13 350	9600	10 010	6940	7610	5310	6980	4870	9.54
-1.5 m	kg	*9640	*9640	*13 790	*13 790	*18 340	14 690	*13 530	9430	9880	6820	7570	5270	7520	5230	9.04
-3.0 m	kg	*15 110	*15 110	*19 190	*19 190	*17 150	14 790	*12 890	9440	9900	6840			*8620	6020	8.25
-4.5 m	kg			*20 020	*20 020	*14 680	*14 680	*11 040	9660					*8750	7710	7.04

*Limited by hydraulic rather than tipping load.

**Lifting capability increases about 3% when heavy lift mode on.

The above loads are in compliance with hydraulic excavator lift capacity ratings standard ISO 10567, they do not exceed 87% of hydraulic lifting capacity or 75% of tipping capacity. Weight of all lifting accessories must be deducted from the above lifting capacities. The use of a work tool attachment point to handle/lift objects, could affect the machine lift performance.

Always refer to the appropriate Operation and Maintenance Manual for specific product information.

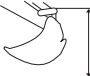

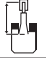
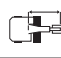
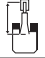
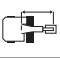
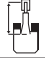
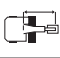
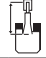
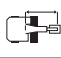
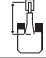
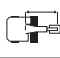

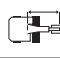

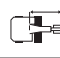
340D L Hydraulic Excavator

Lift Capacities – Mass Excavation Boom (6180 mm)**

All weights are in kg, without bucket, with quick coupler, heavy lift on.



Medium Stick – 2550 mm

		1.5 m		3.0 m		4.5 m		6.0 m		7.5 m		9.0 m				m
																
7.5 m	kg													*6570	*6570	7.26
6.0 m	kg							*8960	*8960	*8360	7860			*6350	*6350	8.15
4.5 m	kg			*19 420	*19 420	*12 760	*12 760	*10 180	*10 180	*8870	7640			*6410	5930	8.69
3.0 m	kg					*15 880	*15 880	*11 650	10 350	*9590	7340			*6700	5510	8.95
1.5 m	kg					*18 000	15 140	*12 890	9830	10 140	7060			*7270	5390	8.94
0 m	kg			*9850	*9850	*18 560	14 740	*13 510	9510	9940	6870			7990	5560	8.68
-1.5 m	kg			*17 690	*17 700	*17 890	14 690	*12 320	9400	9880	6820			8790	6100	8.13
-3.0 m	kg			*19 640	*19 640	*16 030	14 900	*12 070	9510					*9300	7310	7.24
-4.5 m	kg			*16 290	*16 290	*12 310	*12 310							*8950	*8950	5.83

*Limited by hydraulic rather than tipping load.

**Increases about 3% when heavy lift mode on.

The above loads are in compliance with hydraulic excavator lift capacity ratings standard ISO 10567, they do not exceed 87% of hydraulic lifting capacity or 75% of tipping capacity. Weight of all lifting accessories must be deducted from the above lifting capacities. The use of a work tool attachment point to handle/lift objects, could affect the machine lift performance.

Always refer to the appropriate Operation and Maintenance Manual for specific product information.