

# 992K

## Wheel Loader



### Engine

Engine Model	Cat® C32 ACERT™	
Gross Power	674 kW	904 hp
Net Power	597 kW	801 hp

### Buckets

Bucket Capacities	10.7-12.3 m <sup>3</sup>	14-16 yd <sup>3</sup>
-------------------	--------------------------	-----------------------

### Operating Specifications

Rated Payload Standard Lift	21.7 tonnes	24 tons
Rated Payload High Lift	19.1 tonnes	21 tons
Operating Weight Standard Lift	97 295 kg	214,948 lb
Operating Weight High Lift	102 625 kg	226,249 lb



992K Features

Safety

*The 992K offers world class safety to those operating the machine, those working around it and on it.*

Productivity

*Designed for quick response to operator input, the 992K excels at face loading, truck loading and load and carry applications.*

Reliable Performance

*The 992K is constructed of proven designs, all integrated to provide you with a reliable loader.*

Operator Comfort

*The 992K offers an ergonomically designed cab with adjustable controls and excellent visibility to the job site.*

Simplified Service

*Conveniently grouped service centers make short work of maintenance. VIMS and Cat Product Link keep you informed and up-to-date on machine health.*

Sustainability

*Like most Cat equipment, the 992K is designed to use fuel wisely and incorporates emissions and sound reduction technologies.*



Contents

Quality .....3

Long Life, Reliable Components .....4

Operator Comfort .....5

Safety .....6

Service Made Simple .....7

Buckets .....8

Bucket Ground Engaging Tools .....9

Sustainability .....10

High Lift Arrangement  
Optional Attachment.....11

992K Specifications .....12

992K Standard Equipment.....16

992K Optional Equipment.....17

992K Mandatory Equipment .....18

Notes.....19

Caterpillar first introduced the 992 in 1968. This large wheel loader has been a global leader ever since, building a reputation as a face loader that’s both safe to operate, productive and durable. With the introduction of the K Series™, we’ve enhanced the operator’s experience and the safety of those working on and around the machine. We’ve reduced operating costs with fuel saving efficiencies that reduce your cost per ton.

With both standard and high lift configurations, this machine will pass match with fleets of 775, 777 and 785 trucks. If your operations revolve around the 992 as a loading tool, you’ll find everything that’s important to your business in the 992K; safety, productivity, cost control and comfort for your people.



# Quality

## Second only to Safety

Caterpillar's commitment to quality is profound. We design to a higher standard so that your business can prosper.

- All of our parts are subject to quality and conformance checks. We collaborate with suppliers early in the design phase for their knowledge and manufacturing experience.
- New designs undergo Finite Element Analysis telling us where stresses congregate under loads typical of the machine's application. New castings are virtually monitored to evaluate fill quality and temperature exchange.
- A shake table simulates thousands of hours of use in days – allowing engineers to validate durability. Further analysis on airflow, ergonomics, performance, and ISO standard compliance are performed on prototype and field follow machines.
- Further tests are performed by operators and technicians for comfort, ergonomics and serviceability either in 3D virtual environments or on the iron.
- You should know that all new product introductions at Caterpillar are guided by your voice and input, the voice of our dealer organization and their mechanics, and on our ability to physically manufacture a new design. These are just some of the criteria that make Cat products leaders in the industry, and help us ensure long life, reliable machines for your business.



# Long Life, Reliable Components

We value your success and build our machines to support your business



## Linkage and Frames

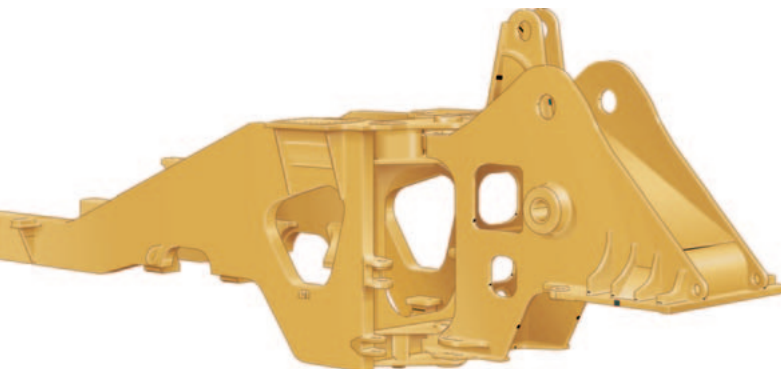
We combine 40+ years of design and field experience – as well as new validation technologies – to ensure 992K frames, castings, welds and fabrications are the best in the industry. Our unique box section rear and front frame designs combine plates and castings to manage torsion loads and provide longer lasting alignment for hitch and pin life. Sleeve bearing pins in the linkage are more predictable in their wear and limit daily greasing. For load and carry applications, optional Ride Control further reduces shock loads to the frame while giving the operator a much smoother ride.

## Cat C32 Engine

The Cat C32 diesel engine with ACERT™ Technology is common to other Cat products – like the 777F off-highway truck – but it will not be identical to the C32 found in the 992K. In the process of integrating a power train into a machine, Cat product groups develop unique power curves and ratings as well as fuel maps unique to that machine and its applications. The C32 in the 992K has starters, oil coolers and turbochargers chosen for its applications. It has mechanically-actuated, electronically controlled (MEUI) fuel injection that meters out fuel in just the right quantity to meet demand. The quality of our Cat fuel injectors ensures ultra fine mists and higher quality combustion from every liter of fuel burned. The C32 is built on a strong core that's smelted at Caterpillar's foundry. The quality of the core is highly scrutinized before further assembly. Even gaskets are carefully designed to reduce leaks while controlling vibration and noise.

## Cat Planetary Powershift Transmission

Nobody builds a better transmission than Caterpillar for earthmoving applications. Everything from gear geometry, heat treatment and metallurgy are Caterpillar design controlled, including the electronics that allow it to integrate with the C32 engine and Impeller Clutch Torque Converter of the 992K. The Cat Planetary Powershift Transmission in the 992K offers three forward and three reverse speeds. The planetary gear group is common with the 993K and 994F large wheel loaders.





# Operator Comfort

Leading the industry in design and ergonomics

The 992K offers a world-class cab, a well-built and designed machine and performance that compliments the operator's skill.

The 992K cab has room to think, is comfortable on long shifts and adjusts arm height, lumbar support, seat position and mirror coverage.

A retractable seat belt is available for both the operator and trainer seat.

For added safety, a rear vision camera option is available, and Ride Control, that adds accumulators to the loader linkage, dampens loping on the haul road. Two doors offer access and ingress options, and the operator is protected from falling objects and rollovers with ROPS/FOPS structures.

Operators can set automatic bucket heights for easier truck loading or feeding a crusher. The implement controls are finger tip controlled and low effort.

The cab is sound suppressed, has vibration dampening and air is filtered to keep dust out. An optional precleaner can extend filter life in extreme applications.





# Safety

Safety is always our first priority

We are constantly improving our products in an effort to provide a safe work environment for the operator and those who work on your job site. Here are just a few of the safety features found on the 992K.

- The 992K features wide, easy to climb stairs with hand holds at critical locations.
- Walkways offer non-skid surfaces and integrated lock out/tag out points are designed into the service areas.
- Extensive glass in the cab and optional heated mirrors extend visibility. A rearview camera option and in cab display can be installed along with HID lights.
- A backup alarm is standard, and operators receive three levels of warning when the machine requires attention.
- An operator trainer seat allows your seasoned professionals to guide new operators. Safety belts are available on both seats.
- Roll over and falling object protection (ROPS/FOPS) is integrated around the cab.

# Service Made Simple

Organized to reduce your costs

The 992K is organized into individual service centers. Combined with the diagnostics available through VIMS, Product Link and Electronic Technician, servicing the 992K can be simple and efficient.

## 1 Optional Service Center

- Ground level
- Oil renewal system (if equipped) tank fill port
- Oil renewal system full light
- Radiator fill port
- Implement fill port
- Steering tank fill port
- Transmission fill port
- Engine oil fill port
- Autolube (if equipped) fill port
- Autolube tank full light

## 2 Hydraulic Service Center

- Hydraulic pilot filters
- Hydraulic pumps
- Hydraulic case drain filters

## 3 Bumper Service Center (left side bumper)

- Auxiliary emergency shutdown switch
- VIMS port
- Power on switch
- Electronic Technician “ET” Com-II port
- Stairway light switch
- Starter lockout switch
- Transmission lockout switch

## 4 Remote Diagnostic Pressure Ports Front Frame

- Lift and lower circuit
- Dump and rackback circuit
- Right and center implement pump relief pressures
- Ride control (optional)
- Pilot supply
- Manual lower valve

## 5 Remote Diagnostic Pressure Ports Rear Frame

- Steering left
- Steering right
- Steering pump discharge
- Fan drive
- Brake accumulator – front and rear
- Impeller clutch
- Lock-up clutch
- Transmission lube
- Brake pump discharge
- Axle oil cooler motor supply
- Axle oil cooler pump – front and rear
- Service brakes – front and rear

## 6 Electrical Service Center

- Breakers
- ECMs
- Fuse

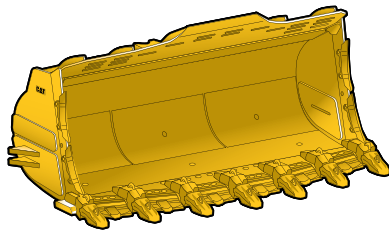
## 7 Engine Service Area

- Primary fuel filter
- Engine oil filter
- Water separator
- Air filters
- Secondary fuel filter



# Buckets

Options to reduce your cost per ton



①

Selecting the right bucket will dictate the productivity of your loader. The process of selection starts with knowing the density of the material you load. From there, you can select the size and appropriate protection strategies that will suit the rated payload targets of your machine. With a large selection of ground engaging tools, your Cat dealer can help you build a bucket that best suits your application. Custom buckets are an option, however many 992K customers will choose one of the following:

## Heavy Duty Rock Bucket

Applications: Face loading tightly compacted pit materials. Moderate abrasion factors and high impact loads are suitable for this bucket.

## High Abrasion Rock Bucket

Applications: Face loading iron ore. High abrasion and moderate impact loads are suitable for this bucket. A smooth floor is also desirable.

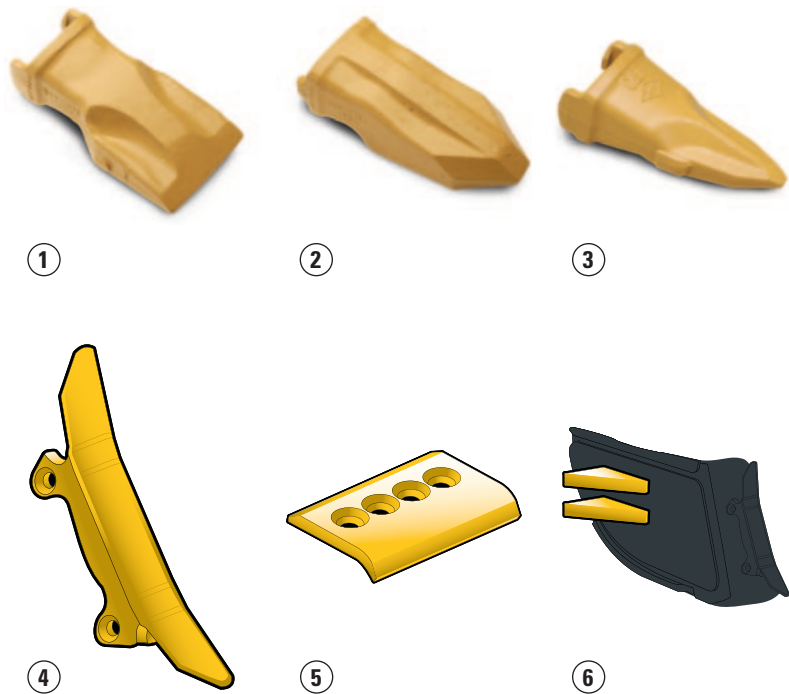
1) High Abrasion Rock Bucket

992K – Standard		Up to specified density for 100% fill factor	
Bucket Volume		Material Density	
m <sup>3</sup>	yd <sup>3</sup>	kg/m <sup>3</sup>	lb/yd <sup>3</sup>
12.2	16	1780	3,000
11.5	15	1890	3,200
10.7	14	2030	3,430

992K – High Lift		Up to specified density for 100% fill factor	
Bucket Volume		Material Density	
m <sup>3</sup>	yd <sup>3</sup>	kg/m <sup>3</sup>	lb/yd <sup>3</sup>
12.2	16	1560	2,630
11.5	15	1660	2,800
10.7	14	1780	3,000

992K Dump Clearance	Std	HL
12.8 m (14 yd) with teeth @ 45	4622 mm (15'2")	5232 mm (17'2")
13.7 m (15 yd) with teeth @ 45	4546 mm (14'11")	5156 mm (16'11")
14.6 m (16 yd) with teeth @ 45	4495 mm (14'9")	5105 mm (16'9")





# Bucket Ground Engaging Tools

Protect your investment

You can't buy a better performing or longer lasting tip than Cat K Series ground engaging tools. Short of a missing operator, nothing affects the productivity of your loader more, so consult your Cat dealer if your current system isn't living up to expectations. When worn beyond use by such materials as iron ore, K Series are easy to change out – no hammer required. A full list of Cat GET can be found on <http://www.Cat.com/get>.

Typical 992K Ground Engaging Tools include:

Adapters and Tips: Heavy Penetration – Heavy Abrasion – Penetration

Side Bar Protectors

Base Edges

Bucket Wings

*Adapters and Tips: 1) Heavy Penetration 2) Heavy Abrasion 3) Penetration  
4) Side Bar Protectors  
5) Base Edges  
6) Bucket Wings*



# Sustainability

Our commitment to you, your business and future generations is as strong as the machines we build.

Our effort to build machines that live longer, use fewer resources, and produce fewer emissions is only the start. Our plants, like the Aurora facility where the 992K is built, are conserving precious energy and resources with solar power, roof top gardens, and comprehensive recycle programs.

Sustainability is profitable. Our cleaner environment helps us control quality on the assembly line and build better products. It reduces our energy demand and our output to the landfill.

We can similarly help your business with machines that lead the industry in balancing fuel use with productivity demands. Each generation of Cat product is more emissions friendly than the last, helping reduce the carbon foot print of your fleet. We can also offer people and technologies that train your operators to be more efficient, help you build better haul roads, and protect the environment at service time. Technologies like Cat Product Link let your Cat dealer know what machines are coming due for service and what parts are required. This allows your dealer to optimize the mileage and fuel use of their service fleet – while providing you with more efficient and timely service.

We welcome the opportunity to support your business and its sustainable growth.



## Engine

Engine Model	Cat® C32 with ACERT™ Technology	
Gross Power – SAE J1995	674 kW	904 hp
Net Power	597 kW	801 hp
Bore	145 mm	5.7 in
Stroke	162 mm	6.4 in
Displacement	32.1 L	8.5 gal

- Cat engine with ACERT™ Technology – EPA Tier 2, EU Stage II Compliant
- These ratings apply at 1,750 rpm when tested under the specified standard conditions.
- Rating for net power advertised is based on power available when the engine is equipped with alternator, air cleaner, muffler, and on-demand hydraulic fan drive at maximum fan speed.

## Weights

Operating Weight – Standard Lift	97 295 kg	214,948 lb
Operating Weight – High Lift	102 626 kg	226,249 lb

- For 10.7 m³ (14.0 yd³) bucket

## Buckets

Bucket Capacities	10.7- 12.3 m³	14-16 yd³
-------------------	------------------	-----------

## Operating Specifications – Standard Lift

Breakout Force	573.3 kN	128,895 lb
Static Tipping Load, at 35° articulation	51 328 kg	113,159 lb
Standard Lift Breakout Force	58 465 kg	128,895 lb
High Lift Breakout Force	57 958 kg	127,775 lb

- For 10.7 m³ (14.0 yd³) bucket

## Operating Specifications – High Lift

Breakout Force	577 kN	129,777 lb
Static Tipping Load at 35° articulation	43 932 kg	96,853 lb

- For 10.7 m³ (14.0 yd³) bucket

## Transmission

Converter Drive – Forward 1	7.1 km/h	4.4 mph
Converter Drive – Forward 2	12.2 km/h	7.6 mph
Converter Drive – Forward 3	20.6 km/h	12.8 mph
Converter Drive – Reverse 1	7.4 km/h	4.6 mph
Converter Drive – Reverse 2	13.0 km/h	8.1 mph
Converter Drive – Reverse 3	22.4 km/h	13.9 mph
Direct Drive – Forward 1	Lock-up Disabled	
Direct Drive – Forward 2	12.9 km/h	8.0 mph
Direct Drive – Forward 3	22.8 km/h	14.2 mph
Direct Drive – Reverse 1	7.9 km/h	4.9 mph
Direct Drive – Reverse 2	14.2 km/h	8.8 mph
Direct Drive – Reverse 3	24.8 km/h	15.4 mph

- With 45/65-45 L-5 46 Ply Tires

## Loader Hydraulic System

Relief Valve Setting	31 000 kPa	4,500 psi
Lift Cylinders, Double Acting: Bore	279.4 mm	11 in
Stroke	1148 mm	45.2 in
Tilt Cylinder, Double Acting: Bore	266.7 mm	10.5 in
Stroke	2055 mm	80.9 in

- Pumps (2), fully variable E/H displacement control – 250 cc

## Hydraulic Cycle Times

Raise*	9.4 seconds
Dump*	1.8 seconds
Lower Float Down (Empty)	3.7 seconds
Total Hydraulic Cycle Time	14.9 seconds

\*With rate load

## Brakes

Brakes	Meets SAE J1473, OCT90 and ISO 3450:1992
--------	--

Tires	
Tires	Choose from a variety of tires to match your application.
<ul style="list-style-type: none"><li>Choice of: 45/65-R45, L-4 1 STAR Michelin 45/65-R45, L-5 1 STAR Michelin 45/65-R45, L-5 58 PR Goodyear 45/65-R45, L-5 58 PR Bridgestone 1150/65-R45, RL-5K 2 STAR Goodyear</li><li>NOTE: In certain applications (such as load and carry) the loader's productive capabilities might exceed the tires' tonnes-km/h (ton-mph) capabilities. Caterpillar recommends that you consult a tire supplier to evaluate all conditions before selecting a tire model.</li></ul>	

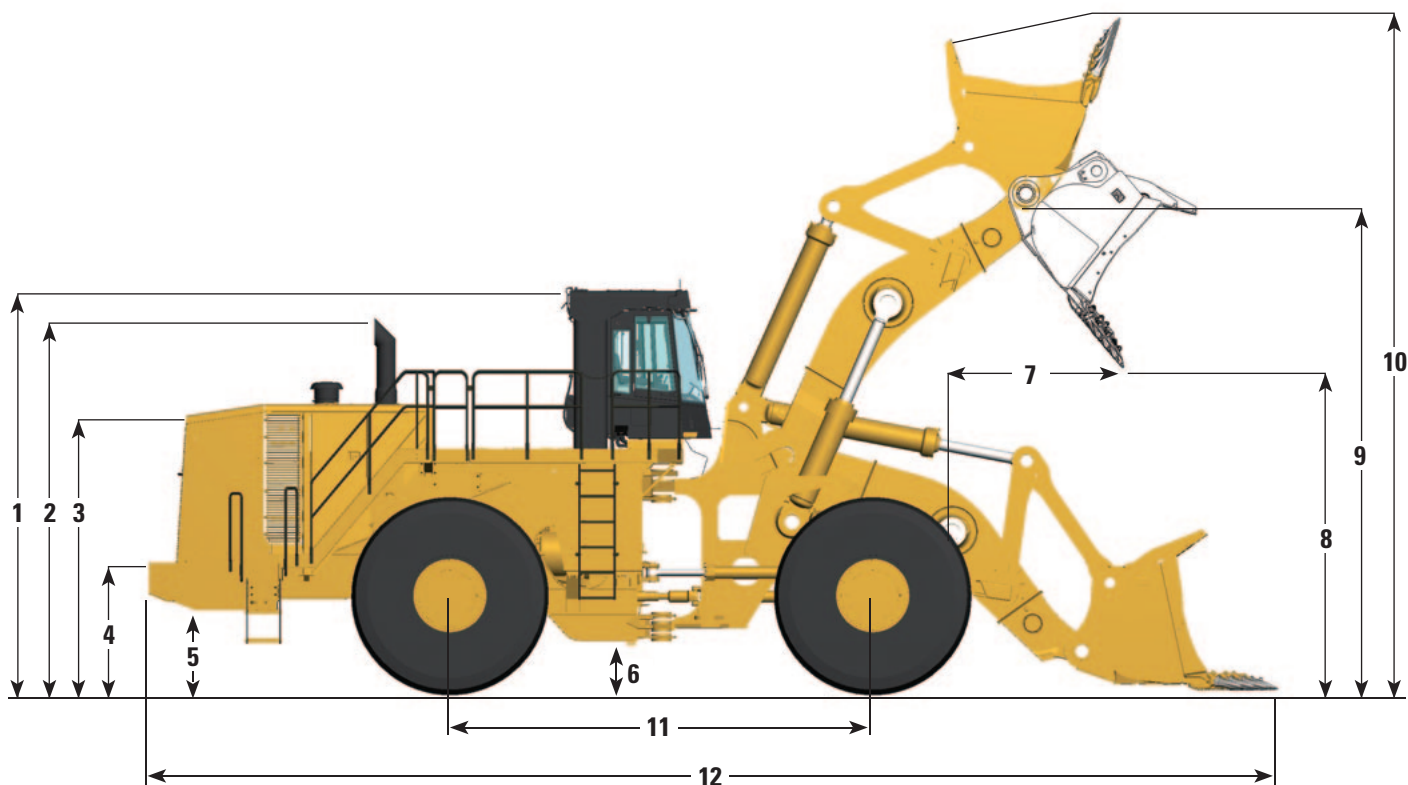
Cab	
ROPS/FOPS	Meets SAE and ISO standards
<ul style="list-style-type: none"><li>ROPS meets SAE J1040 APR88 and ISO 3471:1994 criteria.</li><li>Falling Objects Protective Structure (FOPS) meets SAE J231 JAN81 and ISO 3449:1992 Level II criteria.</li><li>Hearing protection may be needed when operating with an open operator station and cab (when not properly maintained or doors/windows open) for extended periods or in noisy environments.</li></ul>	

Service Refill Capacities		
Fuel Tank – Standard	1562 L	413 gal
Cooling System	290 L	77 gal
Crankcase	120 L	32 gal
Transmission	169 L	45 gal
Differentials and Final Drives – Front	360 L	95 gal
Differentials and Final Drives – Rear	345 L	91 gal
Hydraulic Tank		
Implement	326 L	86 gal
Steering/Brake	159 L	42 gal
Windshield Washer Fluid	18.6 L	4.9 gal



## Dimensions

All dimensions are approximate.



	<b>992K* Standard Lift 45/65-45 58</b>		<b>992K High Lift*** 45/65-45 58</b>	
<b>1</b> Height to top of ROPS	5678 mm	18'7"	5678 mm	18'7"
<b>2</b> Height to top of stack	5248 mm	17'2"	5248 mm	17'2"
<b>3</b> Height to top of hood	4043 mm	13'4"	4043 mm	13'4"
<b>4</b> Height to top of bumper	1830 mm	6'0"	1830 mm	6'0"
<b>5</b> Bumper clearance	1176 mm	3'11"	1176 mm	3'11"
<b>6</b> Ground clearance**	682 mm	2'2"	682 mm	2'2"
<b>7</b> Reach at 50° (Std) 45° (HL) dump (tooth tip)	2118 mm	6'11"	2092 mm	6'9"
<b>8</b> Clearance at 50° (Std) 45° dump (HL) dump (tooth tip)	4480 mm	14'8"	4574 mm	15'1"
<b>9</b> Bucket pin height at full lift	6927 mm	22'8"	7544 mm	24'7"
<b>10</b> Maximum overall height – bucket raised	9313 mm	30'6"	10 109 mm	33'1"
<b>11</b> Wheel base	5890 mm	19'4"	5890 mm	19'4"
<b>12</b> Maximum overall length	15 736 mm	52'0"	16 095 mm	52'8"

\*Dimensions are based on the 45/65-45 58 Tire (Free State).

\*\*Measured to lowest point in hitch area.

\*\*\*High Lift clearances are for High Abrasion Rock Bucket.

## Operation/Bucket Specifications – Standard Lift

Bucket Type		Rock	Rock	Rock	Rock	Rock	Rock	Rock
Ground Engaging Tools		Teeth & Segments	Teeth & Segments	Teeth & Segments	Teeth & Segments	Teeth & Segments	Teeth & Segments	Teeth & Segments
Cutting Edge Type		Spade	Spade	Spade	Spade	Spade	Spade	Spade
Bucket Part No. (Group Level)		305-5790	305-5720	294-8980	307-9440	307-9430	294-9010	307-9450
Heaped capacity (§)	m <sup>3</sup>	10.7	11.5	12.3	10.7	11.5	10.7	10.7
	yd <sup>3</sup>	(14)	(15)	(16)	(14)	(15)	(14)	(14)
Struck capacity (§)	m <sup>3</sup>	8.9	9.5	10.2	8.9	9.5	8.9	8.9
	yd <sup>3</sup>	(11.6)	(12.4)	(13.3)	(11.6)	(12.4)	(11.6)	(11.6)
Width (§)	mm	4824	4884	4824	5068	4824	5165	5068
	(ft/in)	(15'10")	(16'0")	(15'10")	(16'7")	(15'10")	(16'11")	(16'7")
Dump Clearance at Full Lift SAE 45° discharge – with tips (§)	mm	4607	4548	4495	4612	4545	4699	4699
	(ft/in)	(15'1")	(14'11")	(14'8")	(15'1")	(14'11")	(15'5")	(15'5")
Reach at Full Lift SAE 45° discharge – with tips (§)	mm	2326	2378	2427	2322	2385	2292	2292
	(ft/in)	(7'7")	(7'10")	(8'0")	(7'7")	(7'10")	(7'6")	(7'6")
Reach with lift arms horizontal and bucket level	mm	5114	5193	5265	5108	5200	5025	5025
	(ft/in)	(16'10")	(17'0")	(17'4")	(16'10")	(17'1")	(16'6")	(16'6")
Digging depth (segment) (§)	mm	196	201	201	196	198	175	175
	(in)	(7.7)	(7.9)	(7.9)	(7.7)	(7.8)	(6.9)	(6.9)
Overall length – bucket level ground (§)	mm	15 729	15 818	15 890	15 736	15 823	15 632	15 632
	(ft/in)	(51'7")	(51'11")	(52'1")	(51'7")	(51'11")	(51'4")	(51'4")
Overall height with bucket at full raise (§)	mm	9313	9313	9492	9313	9313	9392	9313
	(ft/in)	(30'7")	(30'7")	(31'1")	(30'7")	(30'7")	(30'10")	(30'7")
Loader clearance circle with bucket in carry position (§)	mm	11 097	11 121	11 131	11 096	11 122	11 085	11 085
	(ft/in)	(36'5")	(36'6")	(36'6")	(36'5")	(36'6")	(36'5")	(36'5")
Static tipping load straight (§)	kg	57 096	56 402	56 093	55 615	56 662	53 564	55 194
	(lb)	(125,896)	(124,366)	(123,684)	(122,631)	(124,939)	(118,109)	(121,702)
Static tipping load at full 43° turn (§) †	kg	48 527	47 863	47 544	47 047	48 123	44 996	46 625
	(lb)	(107,003)	(105,537)	(104,835)	(103,738)	(106,110)	(99,216)	(102,809)
Static tipping load – tire deflection at full 43° turn (§) †	kg	45 201	44 546	44 185	43 735	44 803	41 681	43 316
	(lb)	(99,651)	(98,207)	(97,411)	(96,419)	(98,773)	(91,890)	(95,495)
Static tipping load at full 40° turn (§) †	kg	49 634	48 965	48 648	48 153	49 225	46 102	47 732
	(lb)	(109,443)	(107,968)	(107,269)	(106,177)	(108,542)	(101,655)	(105,249)
Static tipping load – tire deflection at full 40° turn (§) †	kg	46 440	45 780	45 422	44 972	46 037	42 919	44 554
	(lb)	(102,382)	(100,927)	(100,138)	(99,146)	(101,494)	(94,620)	(98,224)
Static tipping load at full 35° turn (§) †	kg	51 328	50 653	50 338	49 847	50 913	47 796	49 426
	(lb)	(113,178)	(111,691)	(110,995)	(109,912)	(112,264)	(105,390)	(108,984)
Static tipping load – tire deflection at full 35° turn (§) †	kg	48 361	47 695	47 341	46 893	47 953	44 839	46 474
	(lb)	(106,617)	(105,149)	(104,369)	(103,381)	(105,718)	(98,853)	(102,457)
Breakout force (§) †	kg	58 466	55 998	54 249	57 842	56 147	59 381	60 218
	(lb)	(128,917)	(123,475)	(119,619)	(127,541)	(123,803)	(130,935)	(132,781)
Operating weight (§) †	kg	97 295	97 688	98 068	98 674	97 469	100 844	99 050
	(lb)	(214,535)	(215,402)	(216,240)	(217,576)	(214,919)	(222,361)	(218,405)

(§) Specifications and ratings conform to all applicable standards recommended by the Society for Automotive Engineers. SAE Standards J732C govern loader ratings and are denoted in the text by (§).

† Static tipping load and operating weight shown are based on standard machine configurations with a full fuel tank, coolant, lubricants, and operator.



## Operation/Bucket Specifications – High Lift

Bucket Type		Rock	Rock	Rock	Rock	Rock	Rock	Rock
Ground Engaging Tools		Teeth & Segments	Teeth & Segments	Teeth & Segments	Teeth & Segments	Teeth & Segments	Teeth & Segments	Teeth & Segments
Cutting Edge Type		Spade	Spade	Spade	Spade	Spade	Spade	Spade
Bucket Part No. (Group Level)		305-5790	305-5720	294-8980	307-9440	307-9430	294-9010	307-9450
Heaped capacity (§)	m <sup>3</sup>	10.7	11.5	12.3	10.7	11.5	10.7	10.7
	yd <sup>3</sup>	(14)	(15)	(16)	(14)	(15)	(14)	(14)
Struck capacity (§)	m <sup>3</sup>	8.9	9.5	10.2	8.9	9.5	8.9	8.9
	yd <sup>3</sup>	(11.6)	(12.4)	(13.3)	(11.6)	(12.4)	(11.6)	(11.6)
Width (§)	mm	4824	4884	4824	5068	4824	5165	5068
	(ft/in)	(15'10")	(16'0")	(15'10")	(16'7")	(15'10")	(16'11")	(16'7")
Dump Clearance at Full Lift SAE 45° discharge – with tips (§)	mm	5224	5166	5112	5229	5162	5316	5316
	(ft/in)	(17'1")	(16'11")	(16'8")	(17'2")	(17'0")	(17'4")	(17'4")
Reach at Full Lift SAE 45° discharge – with tips (§)	mm	2193	2246	2294	2189	2252	2159	2159
	(ft/in)	(7'2")	(7'4")	(7'5")	(7'2")	(7'4")	(7'1")	(7'1")
Reach with lift arms horizontal and bucket level – with teeth	mm	5504	5583	5655	5498	5590	5415	5415
	(ft/in)	(18'0")	(18'3")	(18'6")	(18'0")	(18'3")	(17'8")	(17'8")
Digging depth (segment) – bucket level (§)	mm	176	181	181	176	178	155	155
	(in)	(7.0)	(7.1)	(7.1)	(7.0)	(7.0)	(6.1)	(6.1)
Overall length – bucket level ground – with tips (§)	mm	16 197	16 279	16 351	16 191	16 284	16 095	16 095
	(ft/in)	(53'1")	(53'4")	(53'6")	(53'1")	(53'4")	(52'8")	(52'8")
Overall height with bucket at full raise (§)	mm	9930	9930	10 109	9930	9930	10 109	9930
	(ft/in)	(32'6")	(32'6")	(33'2")	(32'6")	(32'6")	(33'2")	(32'6")
Loader clearance circle with bucket in carry position – with tips (§)	mm	11 326	11 352	11 349	11 324	11 352	11 313	11 313
	(ft/in)	(37'1")	(37'2")	(37'2")	(37'1")	(37'2")	(37'1")	(37'1")
Static tipping load straight (at operating weight) (§)	kg	53 044	52 396	52 099	51 567	52 653	49 505	51 149
	(lb)	(116,942)	(115,513)	(114,858)	(113,685)	(116,079)	(109,139)	(112,764)
Static tipping load at full 43° turn (§) †	kg	44 766	44 143	43 834	43 289	44 400	41 227	42 871
	(lb)	(98,692)	(97,318)	(96,637)	(95,435)	(97,885)	(90,890)	(94,514)
Static tipping load – tire deflection at full 43° turn (§) †	kg	41 753	41 135	40 789	40 288	41 390	38 224	39 873
	(lb)	(92,049)	(90,687)	(89,924)	(88,819)	(91,249)	(84,269)	(87,904)
Static tipping load at full 40° turn (§) †	kg	42 946	42 325	41 981	41 481	42 580	39 417	41 065
	(lb)	(94,679)	(93,310)	(92,552)	(91,449)	(93,872)	(86,899)	(90,532)
Static tipping load – tire deflection at full 40° turn (§) †	kg	42 946	42 325	41 981	41 481	42 580	39 417	41 065
	(lb)	(94,679)	(93,310)	(92,552)	(91,449)	(93,872)	(86,899)	(90,532)
Static tipping load at full 35° turn (§) †	kg	44 798	44 172	43 833	43 332	44 427	41 268	42 916
	(lb)	(98,762)	(97,382)	(96,635)	(95,530)	(97,944)	(90,980)	(94,613)
Static tipping load – tire deflection at full 35° turn (§) †	kg	44 798	44 172	43 833	43 332	44 427	41 268	42 916
	(lb)	(98,762)	(97,382)	(96,635)	(95,530)	(97,944)	(90,980)	(94,613)
Breakout force (§) †	kg	57 958	55 505	53 769	57 334	55 656	58 866	59 703
	(lb)	(127,775)	(122,367)	(118,540)	(126,399)	(122,700)	(129,777)	(131,622)
Operating weight (§) †	kg	99 076	99 469	99 849	100 455	99 250	102 625	100 831
	(lb)	(218,425)	(219,291)	(220,129)	(221,465)	(218,808)	(226,249)	(222,294)

(§) Specifications and ratings conform to all applicable standards recommended by the Society for Automotive Engineers. SAE Standards J732C govern loader ratings and are denoted in the text by (§).

† Static tipping load and operating weight shown are based on standard machine configurations with a full fuel tank, coolant, lubricants, and operator.

# 992K Standard Equipment

Standard equipment may vary. Consult your Cat dealer for details.

## ELECTRICAL

- Alarm, back-up
- Alternator, (150-amp)
- Batteries, low maintenance
- Deutsch & Amp Seal terminal connectors
- ECM diagnostic connector
- Lighting system, halogen (front and rear)
- Lighting, access stairway
- Starter, electric (heavy duty)
- Starting and charging system (24-volt)
- Starting receptacle for emergency start

## OPERATOR ENVIRONMENT

- Action alert system, three category
- Air conditioner
- Cab, sound suppressed, pressurized, rollover protective structure (ROPS/FOPS)
- Radio ready for (entertainment) includes antenna, speakers, and 1 x 12V converters (24-volt, 10 amp) for use with laptop/cell phone
- Cigar lighter and ashtray
- Coat hook
- Electro-hydraulic tilt and lift control system locks
- Heater and defroster
- Horn, electric
- Instrumentation, gauges:
  - Engine coolant temperature
  - Fuel level
  - Hydraulic oil temperature
  - Tachometer
  - Transmission oil temperature
- Intermittent front wipers
- Light, dome (cab)
- Lunchbox and beverage holders
- Mirrors, rearview (externally mounted)

- Monitoring system (VIMS) with gauges
- Seat belt, retractable, 76 mm (3 in) wide
- Seat, Cat Comfort (cloth) air suspension
- STIC control system
- Tinted glass
- Trainer seat with lap belt
- Transmission gear indicator
- Wet-arm wipers/washer (front, rear, and corners)

## POWER TRAIN

- Axle oil coolers (front and rear)
- Brakes, fully hydraulic, enclosed, wet multiple disc service brakes and dry parking/secondary brake
- Demand fan
- Electric fuel priming pump
- Engine Cat® C32 ACERT
- Ground level engine shutdown
- Ground level transmission lockout
- Ground level starter lockout
- Implement and steering lockouts
- Precleaner, engine air intake
- Next Generation Modular Radiator (NGMR)
- Starting aid (ether) automatic
- Throttle lock
- Transmission, 533 mm (21 in) planetary, powershift with 3F/3R, electronic control

## OTHER STANDARD EQUIPMENT

- Autolube
- Automatic bucket lift/tilt kickouts, electronically adjustable from cab
- Bumper service center
- Couplings, Cat O-ring face seals
- Doors, service access (locking)

- Fenders, steel (front and rear)
- Grouped hydraulic pressure ports
- Guards, power train and crankcase
- Hitch, drawbar with pin
- Hoses, Cat XT and XT-ES
- Hydraulic oil cooler
- Impeller clutch
- Implement and steering ecology drains
- Mufflers, under hood
- Oil sampling valves
- Piston pump case drain filters
- Positive Flow Control implement valve and pumps
- Sight gauges:
  - Steering oil level
  - Implement oil level
  - Transmission oil level
  - Coolant level
- Starter lockout, bumper
- Stairway, left rear access
- Steering and transmission lock lever, cab
- Steering, load sensing
- Transmission lockout, bumper
- Vandalism protection caplocks
- Venturi stack

## TIRES, RIMS, AND WHEELS

A tire must be selected from the mandatory attachments section. Base machine price includes a tire allowance.

## ANTIFREEZE

Premixed 50 percent concentration of extended life coolant with freeze protection to 34° C (-29° F)



Optional equipment may vary. Consult your Cat dealer for details.

ELECTRICAL

- 10A converter
- HID lights
- Rear vision camera – WAVES
- Warning beacon light

OPERATOR ENVIRONMENT

- AM/FM, CD basic radio
- Cab precleaner
- Satellite radio ready
- Satellite Sirius radio
- Satellite XM radio

STARTING AIDS

- Engine coolant 120V heater
- Engine coolant 240V heater

MACHINE CONTROL  
AND GUIDANCE

- CAES attachment ready option

MISCELLANEOUS ATTACHMENTS

- Oil renewal system
- Roading fenders
- Service center

# 992K Mandatory Equipment

Must choose from each category. Consult your Cat dealer for details.

## AXLES

- Standard front and rear (NC)
- Standard front and no-spin rear

## CAB

- Standard glass
- Rubber mounted glass

## LIFT

- Standard
- High

## LUBE ARRANGEMENTS

- Centromatic AutoLube arrangement
- Line, grease, standard lubrication
- Quicklube AutoLube arrangement

## ELECTRONICS

- VIMS display software  
(select language group)

## OPERATOR SEAT

- Seat, heated
- Seat, standard

## MIRROR ARRANGEMENT

- Mirror, heated
- Mirror, standard

## TORQUE CONVERTER

- ICTC with housing and lock-up clutch
- Standard ICTC with housing

## ENGINE ARRANGEMENTS

- Engine, standard
- Engine, standard, sound suppression
- Engine, brake and engine, brake, sound suppression

## FUEL ARRANGEMENTS

- Fuel arrangement, fast fill
- Fuel arrangement, fast fill, heated  
(fuel heater)
- Fuel arrangement, heated (fuel heater)
- Fuel arrangement, standard

## COOLING ARRANGEMENTS

- High Ambient – for ambient temperatures  
55° C (131° F), standard filtration
- Standard – for ambient temperatures  
43° C (109° F), standard filtration

## STEERING AND FILTRATION SYSTEMS

- Secondary steering, deluxe filtration
- Secondary steering, standard filtration
- Standard steering, deluxe filtration
- Standard steering, standard filtration

## OPERATION AND

## MAINTENANCE MANUAL

- English version
- French version
- German version
- Greek version
- Hebrew version
- Italian version
- Japanese version
- Norwegian version
- Portuguese version
- Russian version
- Spanish version
- Swedish version
- Thai version
- Turkish version

## TIRES

- Consult your Cat dealer for current options

## PRODUCT LINK

- Required for NACD, LACD, Europe,  
Turkey, Australia, and New Zealand





## 992K Wheel Loader

For more complete information on Cat products, dealer services, and industry solutions, visit us on the web at **[www.cat.com](http://www.cat.com)**

© 2011 Caterpillar Inc.  
All rights reserved

Materials and specifications are subject to change without notice. Featured machines in photos may include additional equipment. See your Cat dealer for available options.

CAT, CATERPILLAR, SAFETY.CAT.COM, their respective logos, "Caterpillar Yellow" and the "Power Edge" trade dress, as well as corporate and product identity used herein, are trademarks of Caterpillar and may not be used without permission.

AEHQ5939-01 (02-2011)

