



Cat[®] TL1255

Telehandler

Specifications

Engine

| | | |
|---------------------|--------------------------|----------|
| Model | Cat [®] C4.4 TA | |
| Gross Power (Basic) | 106 kW | 142 hp |
| Net Power (Basic) | 100.6 kW | 134.9 hp |

- Net Power shown is the power available at the flywheel when equipped with fan, air cleaner, muffler, and alternator.

Weights

| | | |
|------------------|-----------|-----------|
| Operating Weight | 16 057 kg | 35,400 lb |
|------------------|-----------|-----------|

Operating Specifications

| | | |
|-----------------------------------|----------|-----------|
| Rated Load Capacity | 5443 kg | 12,000 lb |
| Maximum Lift Height | 16.6 m | 54.3 ft |
| Maximum Forward Reach | 13 m | 42.5 ft |
| Frame Leveling | 10° | |
| Top Travel Speed | 30.4 kph | 18.9 mph |
| Capacity at Max Height (o/r Up) | 1814 kg | 4,000 lb |
| Capacity at Max Height (o/r Down) | 2268 kg | 5,000 lb |
| Capacity at Max Reach (o/r Up) | 0 kg | 0 lb |
| Capacity at Max Reach (o/r Down) | 1588 kg | 3,500 lb |
| Turning Radius over Tires | 4.3 m | 14 ft |

Hydraulic System — Implement

| | | |
|---------------------------------------|--------------------------|------------|
| Gear Pump | Load sensing piston pump | |
| System Operating Pressure | 252 bar | 3,650 psi |
| Auxiliary Hydraulic Pressure | 207 bar | 3,000 psi |
| Auxiliary Hydraulic Flow at Boom Head | 38 L/min | 10 gal/min |

- Auxiliary Hydraulic Circuit used for all attachments equipped with cylinders or other hydraulic components. Consists of valves, controls, and hydraulic lines.

Service Refill Capacities

| | | |
|------------------|---------|--------|
| Fuel Tank | 144 L | 38 gal |
| Hydraulic System | 227.1 L | 60 gal |

Tires

| | |
|----------|-----------------------------------------------|
| Standard | 14.00 x 24-12 PR |
| Optional | 14.00 x 24 Foam Filled 14.00 x 24 Rock Lug |

Transmission Speeds

| | |
|---------|---------|
| Forward | 4 speed |
| Reverse | 3 speed |

Boom Performance

| | | |
|-----------------------|--------------|-----------|
| Boom Up | 15.7 Seconds | |
| Boom Down | 13.9 Seconds | |
| Tele In | 13.9 Seconds | |
| Tele Out | 17.6 Seconds | |
| Drawbar Pull (Loaded) | 9072 kg | 20,000 lb |

Axles

- Trunnion mounted planetary 55 degree steer axles.
- Integral steer cylinder.
- High bias limited slip differential on front axle.

Brakes

- Service Brakes are inboard wet disc brakes on front axle.
- Parking Brakes are wet disc spring-applied hydraulic release. Light on dash indicates when brake is on.

Instruments

- Volt meter, hourmeter, engine oil pressure gauge, fuel gauge, water temperature gauge. All gauges protected by clear acrylic cover.

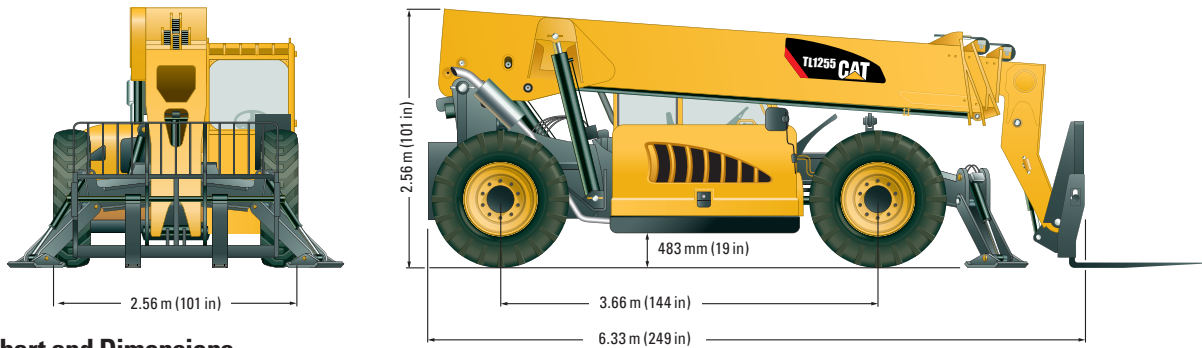
Work Tools

| | Includes Auxiliary Electrics | Includes Auxiliary Electrics |
|--------------------------|------------------------------------------------|-------------------------------------------------|
| Hydraulic IT Coupler | | |
| Pallet Forks | (2) 1524 mm, 51 mm x 152 mm | (2) 60 in, 2 in x 6 in |
| | (2) 1219 mm, 60 mm x 102 mm | (2) 48 in, 2.36 in x 4 in |
| Cubing Forks | (2) 1219 mm, 51 mm x 51 mm | (2) 48 in, 2 in x 2 in |
| Standard Tilt Carriage | 1270 mm | 50 in |
| Wide Tilt Carriage | 1829 mm | 72 in |
| Standard Rotate Carriage | 1270 mm | 50 in |
| Wide Rotate Carriage | 1829 mm | 72 in |
| Swing Carriage | 100°, 1829 mm, 4536 kg Capacity, 2268 kg Swung | 100°, 72 in, 10,000 lb Capacity, 5,000 lb Swung |
| Swing Carriage | 180°, 1829 mm, 4536 kg Capacity, 2268 kg Swung | 180°, 72 in, 10,000 lb Capacity, 5,000 lb Swung |
| Side Shift Carriage | 1.22 m | 48 in |

TL1255 Telehandler

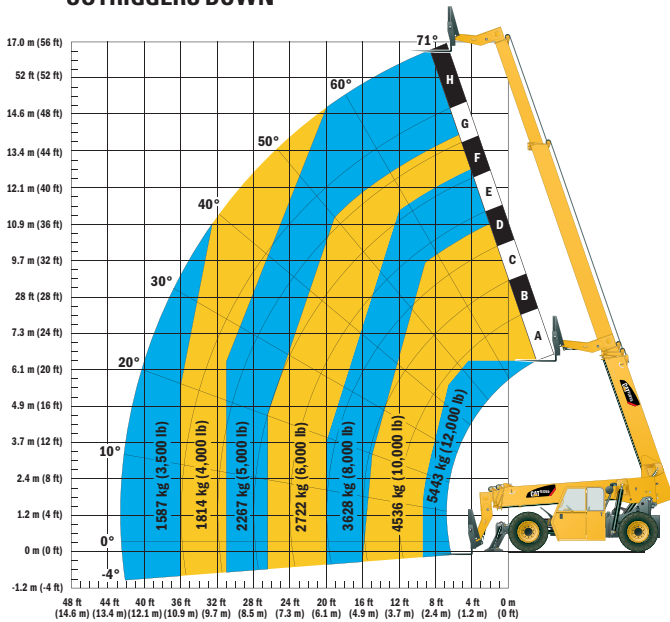
Dimensions

All dimensions are approximate.

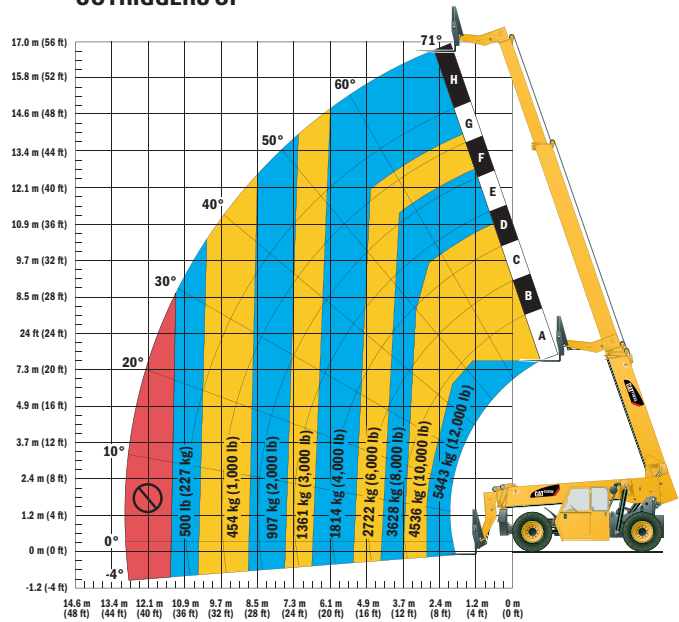


Load Chart and Dimensions

OUTRIGGERS DOWN



OUTRIGGERS UP



IMPORTANT

Rated lift capacities shown are with machine equipped with carriage and pallet forks. The machine must be level on a firm surface with undamaged, properly inflated tires. Machine specifications and stability are based on rated lift capacities at specific boom angles and boom lengths.

(If specifications are critical, the proposed application should be discussed with your dealer.)

DO NOT exceed rated lift capacity loads, as unstable and dangerous machine conditions will result.

DO NOT tip the machine forward to determine the allowable load.

Use only JLG approved attachments with proper material handler model/attachment load capacity charts displayed in the operator's cab. OSHA requires all rough terrain forklift operators be trained according to OSHA 29 CFR 1910.178 (1).

Due to continuous product improvements, machine specifications and/or equipment changes may be made without prior notification. This machine meets or exceeds ANSI/ITSDF B56.6-2005 as originally manufactured for intended applications.

For more complete information on Cat products, dealer services, and industry solutions, visit us on the web at www.cat.com

AEHQ5842-04

© 2008 Caterpillar
Printed in U.S.A.
All rights reserved.

CAT, CATERPILLAR, their respective logos, "Caterpillar Yellow" and the POWER EDGE trade dress, as well as corporate and product identity used herein, are trademarks of Caterpillar and may not be used without permission.

CATERPILLAR®