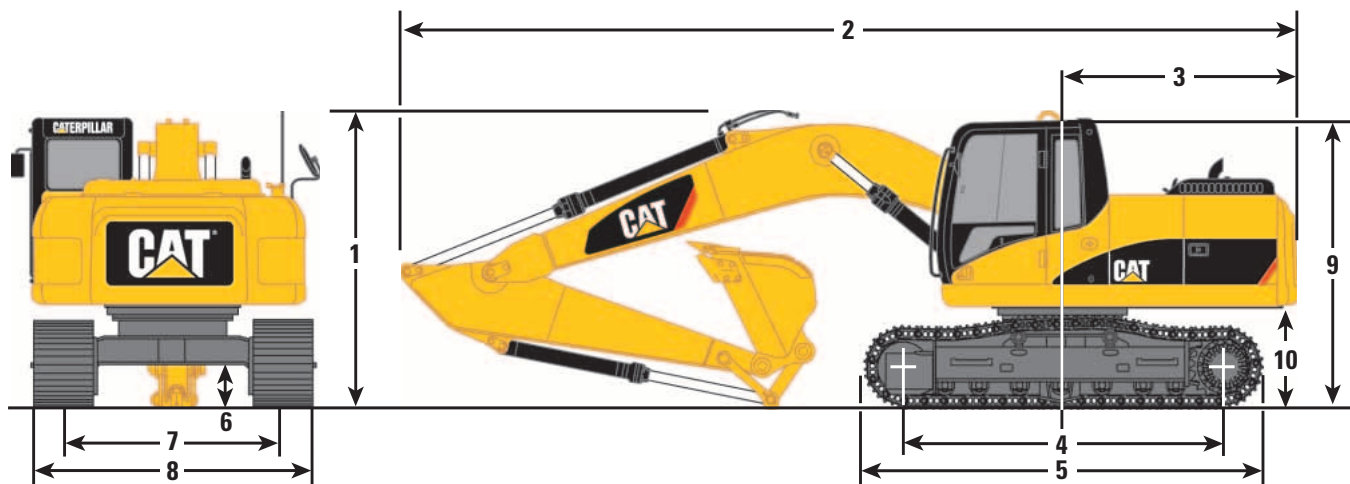


319D L/319D LN Hydraulic Excavators

Dimensions

All dimensions are approximate.



Boom Options	Reach	Reach	Reach
Stick Options	2.25 m (7'5")	2.7 m (8'10")	3.2 m (10'6")
1 Shipping Height	3120 mm (10'2")	3080 mm (10'1")	3530 mm (11'7")
2 Shipping Length	8820 mm (28'11")	8780 mm (28'10")	8760 mm (28'9")
3 Tail Swing Radius	2500 mm (8'2")	2500 mm (8'2")	2500 mm (8'2")
4 Length to Center of Rollers			
319D L	3650 mm (12'0")	3650 mm (12'0")	3650 mm (12'0")
319D LN	3650 mm (12'0")	3650 mm (12'0")	3650 mm (12'0")
5 Track Length			
319D L	4450 mm (14'7")	4450 mm (14'7")	4450 mm (14'7")
319D LN	4450 mm (14'7")	4450 mm (14'7")	4450 mm (14'7")
6 Ground Clearance	440 mm (1'5")	440 mm (1'5")	440 mm (1'5")
7 Track Gauge			
319D L	2200 mm (7'3")	2200 mm (7'3")	2200 mm (7'3")
319D LN	1990 mm (6'6")	1990 mm (6'6")	1990 mm (6'6")
8 Transport Width	600 mm (24") Shoes	700 mm (28") Shoes	790 mm (31") Shoes
319D L	2800 mm (9'2")	2900 mm (9'6")	2990 mm (9'10")
319D LN	2595 mm (8'6")		
9 Cab Height	2870 mm (9'5")	2870 mm (9'5")	2870 mm (9'5")
10 Counterweight Clearance	1030 mm (3'5")*	1030 mm (3'5")*	1030 mm (3'5")*

* Includes lug height

319D L/319D LN Hydraulic Excavators

Operating Weights

Caterpillar designed and built track-type undercarriage.

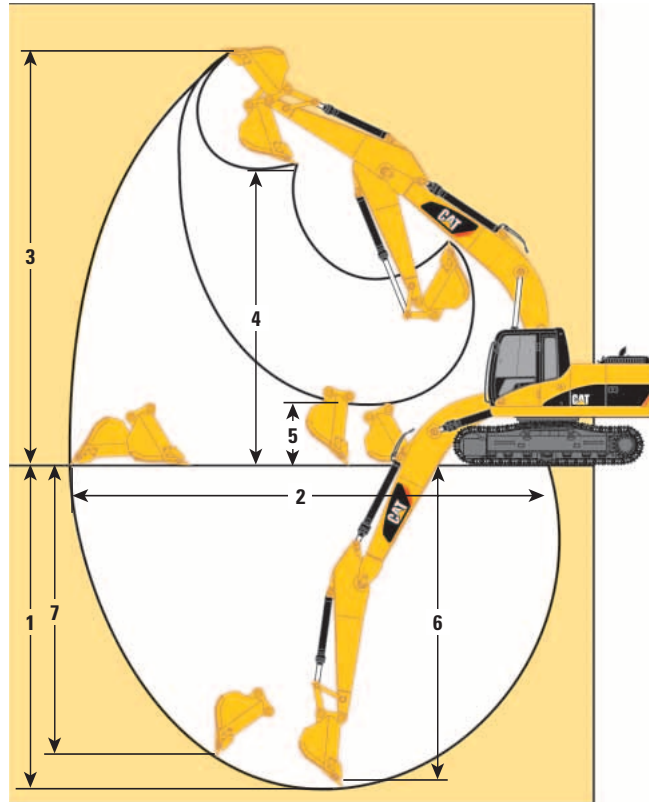
Track Width		Operating Weight 2.25 m (7'5")*		Operating Weight 2.7m (8'10")*		Operating Weight 3.2 m (10'6")*	
319D L	600 mm (24") triple grouser	19 450 kg	42,880 lb	19 460 kg	42,902 lb	19 520 kg	43,034 lb
	700 mm (28") triple grouser	19 830 kg	43,718 lb	19 840 kg	43,740 lb	19 900 kg	43,872 lb
	790 mm (31") triple grouser	20 100 kg	44,313 lb	20 110 kg	44,335 lb	20 180 kg	44,489 lb
319D LN	500 mm (20") triple grouser	19 150 kg	42,219 lb	19 160 kg	42,241 lb	19 230 kg	42,395 lb
	600 mm (24") triple grouser	19 410 kg	42,792 lb	19 420 kg	42,814 lb	19 480 kg	42,946 lb

* with SAE 0.77 m³ (1.0 yd³) and 3.6 ton counterweight.

319D L/319D LN Hydraulic Excavators

Working Ranges

All dimensions are approximate.



Boom	Reach 5.3 m (17'5")	Reach 5.3 m (17'5")	Reach 5.3 m (17'5")
Stick	3.2 m (10'6")*	2.7 m (8'10")*	2.25 m (7'5")*
Bucket	0.77 m ³ (1.0 yd ³)	0.77 m ³ (1.0 yd ³)	0.77 m ³ (1.0 yd ³)
1 Maximum Digging Depth	6890 mm (22'7")	6390 mm (21'0")	5940 mm (19'6")
2 Maximum Reach at Ground Level	9640 mm (31'8")	9110 mm (29'11")	8660 mm (28'5")
3 Maximum Cutting Height	9610 mm (31'6")	9190 mm (30'2")	8880 mm (29'2")
4 Maximum Loading Height	6840 mm (22'5")	6440 mm (21'2")	6140 mm (20'2")
5 Minimum Loading Height	1840 mm (6'0")	2330 mm (7'8")	2790 mm (9'2")
6 Maximum Depth Cut for 2440 mm (8') Level Bottom	6720 mm (22'1")	6180 mm (20'3")	5680 mm (18'8")
7 Maximum Vertical Wall Digging Depth	5710 mm (18'9")	5110 mm (16'9")	4550 mm (14'11")
Minimum Front Swing Radius	3070 mm (10'1")	3120 mm (10'3")	3120 mm (10'3")
Stick Digging Force (SAE)	80.7 kN (18,142 lb)	89.9 kN (20,210 lb)	105.1 kN (23,627 lb)
Bucket Digging Force (SAE)	113.9 kN (25,606 lb)	112.3 kN (25,246 lb)	132.1 kN (29,697 lb)

* Measurements shown are for machines equipped with the 0.77 m³ (1.0 yd³) buckets.

319D L/319D LN Hydraulic Excavators

Buckets

Buckets have tapered sides, angled corner teeth, dual radius curvature, horizontal wear strips and holes for optional side cutters.

HEAVY DUTY

Recommended Maximum Material Density

Buckets	Width		Capacity		2.25 m (7'5") Stick		2.7 m (8'10") Stick		(10'6") Stick	
	mm	in	m ³	yd ³	kg/m ³	lb/yd ³	kg/m ³	lb/yd ³	kg/m ³	lb/yd ³
239-2529	616	24	0.45	0.59	1800	3,034	1800	3,034	1800	3,034
239-2530	757	30	0.58	0.76	1800	3,034	1800	3,034	1800	3,034
239-2531	924	36	0.78	1.01	1800	3,034	1800	3,034	1500	2,528
239-2532	1052	42	0.92	1.20	1800	3,034	1500	2,528	1200	2,023
239-2533	1230	48	1.02	1.40	1500	2,528	1200	2,023	1200	2,023

Material Densities

Material	kg/m ^{3*}	lb/yd ^{3**}	Material	kg/m ^{3*}	lb/yd ^{3**}
Clay, dry	1480	2,500	Gravel, pit run	1930	3,250
Clay, wet	1660	2,800	Rock/dirt, 50%	1720	2,900
Earth, dry	1510	2,550	Sand, dry	1420	2,400
Earth, wet	1600	2,700	Sand, wet	1840	3,100
Loam	1250	2,100	Sand & Clay	1600	2,700
Gravel, dry	1510	2,550	Stone, crushed	1600	2,700
Gravel, wet	2020	3,400	Top soil	950	1,600

* kilograms per loose cubic meter

** pounds per loose cubic yard

For densities of other materials see Caterpillar Performance Handbook.

319D L/319D LN Hydraulic Excavators

Undercarriage

Caterpillar designed and built track-type undercarriage

Track Width	Ground Pressure	
3.2 m (10'6") Stick	319D L	319D LN
600 mm (24") triple grouser	40.6 kPa (5.9 psi)	40.5 kPa (5.9 psi)
700 mm (28") triple grouser	35.5 kPa (5.1 psi)	–
790 mm (31") triple grouser	31.9 kPa (4.6 psi)	–

Undercarriage

Caterpillar designed and built track-type undercarriage

Track Width	Ground Pressure	
R2.7 m (8'10")	319D L	319D LN
600 mm (24") triple grouser	40.5 kPa (5.9 psi)	40.4 kPa (5.9 psi)
700 mm (28") triple grouser	35.4 kPa (5.1 psi)	–
790 mm (31") triple grouser	31.8 kPa (4.6 psi)	–

Undercarriage

Caterpillar designed and built track-type undercarriage

Track Width	Ground Pressure	
2.25 m (7'5") Stick	319D L	319D LN
600 mm (24") triple grouser	40.5 kPa (5.9 psi)	40.4 kPa (5.9 psi)
700 mm (28") triple grouser	35.4 kPa (5.1 psi)	–
790 mm (31") triple grouser	31.8 kPa (4.6 psi)	–

319D L/319D LN Hydraulic Excavators

Reach Boom Lift Capacities



Load at
Maximum Reach



Load Radius
Over Front



Load Radius
Over Side

R2.7 STICK – 2.7 m (8'10")
BUCKET – 0.77 m³ (1.0 yd³)

UNDERCARRIAGE – Long
SHOES – 600 mm (24") triple grouser

BOOM – Reach 5.3 m (17.4 ft)
COUNTERWEIGHT – 3.6 mt (7,940 lb)

Load Point Height	Load at Maximum Reach	3.0 m (10.0 ft)		4.5 m (15.0 ft)		6.0 m (20.0 ft)		7.5 m (25.0 ft)		Load Radius Over Side		m ft
		Over Front	Over Side	Over Front	Over Side	Over Front	Over Side	Over Front	Over Side	Over Front	Over Side	
7.5 m 25.0 ft	kg lb									*1750 *3,700	*1750 *3,700	6.03 19.43
6.0 m 20.0 ft	kg lb					*3700 *8,000	*3700 7,950			*2300 *5,000	*2300 *5,000	7.09 23.09
4.5 m 15.0 ft	kg lb					*4050 *8,800	3650 7,750	*3000	2350	*2350 *5,150	2200 4,900	7.71 25.20
3.0 m 10.0 ft	kg lb			*6200 *13,300	5550 11,900	*4800 *10,450	3450 7,350	*4250 *8,850	2300 4,850	*2450 *5,350	1950 4,250	8.10 26.54
1.5 m 5.0 ft	kg lb			*8100 *17,400	5050 10,850	*5700 *12,300	3200 6,900	4200 8,950	2200 4,650	*2600 *5,700	1800 3,950	8.24 27.04
Ground Line	kg lb			*9050 *19,500	4800 10,300	5950 12,700	3050 6,550	4100 8,750	2100 4,450	*2900 *6,400	1850 4,000	8.08 26.35
-1.5 m -5.0 ft	kg lb	*7300 *15,750	*7300 *15,750	*9050 *19,550	4750 10,200	5850 12,550	3000 6,400			*3500 *7,700	2050 4,450	7.59 24.87
-3.0 m -10.0 ft	kg lb	*10,550 *23,900	*9750 *20,800	*8300 *17,900	4800 10,300	5900 12,600	3000 6,500			*4600 *10,200	2550 5,600	6.74 21.98
-4.5 m -15.0 ft	kg lb	*8650 *18,400	*8650 *18,400	6250 *13,200	5000 10,750					*5000 *10,950	3900 8,850	5.27 16.99

* Indicates that the load is limited by hydraulic lifting capacity rather than tipping load. The above loads are in compliance with hydraulic excavator lift capacity standard ISO 10567:2007. They do not exceed 87% of hydraulic lifting capacity or 75% of tipping load. Weight of all lifting accessories must be deducted from the above lifting capacities. Lifting capacities are based on the machine standing on a firm, uniform supporting surface.

R3.2 STICK – 3.2 m (10'6")
BUCKET – 0.77 m³ (1.0 yd³)

UNDERCARRIAGE – Long
SHOES – 600 mm (24") triple grouser

BOOM – Reach 5.3 m (17.4 ft)
COUNTERWEIGHT – 3.6 mt (7,940 lb)

Load Point Height	Load at Maximum Reach	1.5 m (5.0 ft)		3.0 m (10.0 ft)		4.5 m (15.0 ft)		6.0 m (20.0 ft)		7.5 m (25.0 ft)		Load Radius Over Side		m ft
		Over Front	Over Side	Over Front	Over Side	Over Front	Over Side	Over Front	Over Side	Over Front	Over Side	Over Front	Over Side	
7.5 m 25.0 ft	kg lb											*1750 *3,750	*1750 *3,750	6.84 22.11
6.0 m 20.0 ft	kg lb							*3150 *6,950	*3150 *6,950			*1850 *4,050	*1850 *4,050	7.78 25.37
4.5 m 15.0 ft	kg lb							*3600 *7,800	*3600 *7,800	*3250 *6,850	2400 5,050	*1900 *4,150	*1900 *4,150	8.32 27.24
3.0 m 10.0 ft	kg lb					*5450 *11,700	*5450 *11,700	*4400 *9,500	3500 7,450	*3900 *8,500	2300 4,900	*2000 *4,350	1700 3,700	8.63 28.30
1.5 m 5.0 ft	kg lb					*7500 *16,100	5150 11,100	*5350 *11,550	3250 6,950	4200 8,950	2200 4,650	*2100 *4,600	1600 3,500	8.76 28.73
Ground Line	kg lb					*8750 *18,900	4850 10,350	5950 12,700	3050 6,500	4100 8,750	2100 4,450	*2300 *5,100	1600 3,500	8.61 28.24
-1.5 m -5.0 ft	kg lb			*7100 *16,300	*7100 *16,300	*9100 *19,650	4700 10,100	5800 12,450	2950 6,350	4050 8,600	2050 4,350	*2700 *6,000	1750 3,850	8.16 26.73
-3.0 m -10.0 ft	kg lb	*7800 *16,950	*7800 *16,950	*11,600 *26,100	9550 20,500	*8600 *18,600	1750 10,150	5800 12,450	2950 6,350			*3450 *7,700	2150 4,700	7.36 24.05
-4.5 m -15.0 ft	kg lb			*10,100 *21,550	9850 21,100	*7150 *15,200	4900 10,500					*4700 *10,300	3050 6,800	6.07 19.66

* Indicates that the load is limited by hydraulic lifting capacity rather than tipping load. The above loads are in compliance with hydraulic excavator lift capacity standard ISO 10567:2007. They do not exceed 87% of hydraulic lifting capacity or 75% of tipping load. Weight of all lifting accessories must be deducted from the above lifting capacities. Lifting capacities are based on the machine standing on a firm, uniform supporting surface.

319D L/319D LN Hydraulic Excavators

Reach Boom Lift Capacities



Load at
Maximum Reach



Load Radius
Over Front



Load Radius
Over Side

R2.7 STICK – 2.7 m (8'10")
BUCKET – 0.77 m³ (1.0 yd³)

UNDERCARRIAGE – Long
SHOES – 700 mm (28") triple grouser

BOOM – Reach 5.3 m (17.4 ft)
COUNTERWEIGHT – 3.6 mt (7,940 lb)

Load Point Height	Load at Maximum Reach	3.0 m (10.0 ft)		4.5 m (15.0 ft)		6.0 m (20.0 ft)		7.5 m (25.0 ft)		m ft		
		Over Front	Over Side	Over Front	Over Side	Over Front	Over Side	Over Front	Over Side	Over Front	Over Side	
7.5 m 25.0 ft	kg lb									*1750 *3,700	*1750 *3,700	6.03 19.43
6.0 m 20.0 ft	kg lb					*3700 *8,000	*3700 *8,000			*2300 *5,000	*2300 *5,000	7.09 23.09
4.5 m 15.0 ft	kg lb					*4050 *8,800	3700 7,900	*3000	2400	*2350 *5,150	2250 5,000	7.71 25.20
3.0 m 10.0 ft	kg lb			*6200 *13,300	5650 12,100	*4800 *10,450	3500 7,500	*4250 *8,850	2350 4,950	*2450 *5,350	2000 4,350	8.10 26.54
1.5 m 5.0 ft	kg lb			*8100 *17,400	5150 11,100	*5700 *12,300	3300 7,050	4250 9,150	2250 4,750	*2600 *5,700	1850 4,100	8.24 27.04
Ground Line	kg lb			*9050 *19,500	4900 10,550	6050 12,950	3150 6,700	4200 8,950	2150 4,600	*2900 *6,400	1900 4,150	8.08 26.50
-1.5 m -5.0 ft	kg lb	*7300 *15,750	*7300 *15,750	*9050 *19,550	4850 10,400	5950 12,800	3050 6,550			*3500 *7,700	2100 4,600	7.59 24.87
-3.0 m -10.0 ft	kg lb	*10550 *23,900	9900 21,200	*8300 *17,900	4900 10,550	6000 *12,900	3100 6,650			*4600 *10,200	2600 5,700	6.74 21.98
-4.5 m -15.0 ft	kg lb	*8650 *18,400	*8650 *18,400	*6250 *13,200	5100 11,000					*5000 *10,950	4000 9,050	5.27 16.99

* Indicates that the load is limited by hydraulic lifting capacity rather than tipping load. The above loads are in compliance with hydraulic excavator lift capacity standard ISO 10567:2007. They do not exceed 87% of hydraulic lifting capacity or 75% of tipping load. Weight of all lifting accessories must be deducted from the above lifting capacities. Lifting capacities are based on the machine standing on a firm, uniform supporting surface.

R3.2 STICK – 3.2 m (10'6")
BUCKET – 0.77 m³ (1.0 yd³)

UNDERCARRIAGE – Long
SHOES – 700 mm (28") triple grouser

BOOM – Reach 5.3 m (17.4 ft)
COUNTERWEIGHT – 3.6 mt (7,940 lb)

Load Point Height	Load at Maximum Reach	1.5 m (5.0 ft)		3.0 m (10.0 ft)		4.5 m (15.0 ft)		6.0 m (20.0 ft)		7.5 m (25.0 ft)		m ft		
		Over Front	Over Side	Over Front	Over Side	Over Front	Over Side	Over Front	Over Side	Over Front	Over Side	Over Front	Over Side	
7.5 m 25.0 ft	kg lb											*1750 *3,750	*1750 *3,750	6.84 22.11
6.0 m 20.0 ft	kg lb							*3150 *6,950	*3150 *6,950			*1850 *4,050	*1850 *4,050	7.78 25.37
4.5 m 15.0 ft	kg lb							*3600 *7,800	*3600 *7,800	*3250 *6,850	2450 5,200	*1900 *4,150	*1900 *4,150	8.32 27.24
3.0 m 10.0 ft	kg lb					*5450 *11,700	*5450 *11,700	*4400 *9,500	3550 7,600	*3900 *8,500	2350 5,000	*2000 *4,350	1750 3,800	8.63 28.30
1.5 m 5.0 ft	kg lb					*7500 *16,100	5250 11,300	*5350 *11,550	3300 7,100	4300 9,150	2250 4,750	*2100 *4,600	1650 3,600	8.76 28.73
Ground Line	kg lb					*8750 *18,900	4950 10,600	6050 13,000	3150 6,700	4200 8,950	2150 4,550	*2300 *5,100	1650 3,600	8.61 28.24
-1.5 m -5.0 ft	kg lb			*7100 *16,300	*7100 *16,300	*9100 *19,650	4800 10,350	5950 12,750	3050 6,500	4100 8,800	2100 4,450	*2700 *6,000	1800 3,950	8.16 26.73
-3.0 m -10.0 ft	kg lb	*7800 *16,950	*7800 *16,950	*11,600 *26,100	9750 20,850	*8600 *18,600	4850 10,350	5950 12,750	3050 6,500			*3450 *7,700	2200 4,800	7.35 24.05
-4.5 m -15.0 ft	kg lb			*10,100 *21,550	10,050 21,500	*7150 *15,200	5000 10,700					*4700 *10,300	3100 6,950	6.07 19.66

* Indicates that the load is limited by hydraulic lifting capacity rather than tipping load. The above loads are in compliance with hydraulic excavator lift capacity standard ISO 10567:2007. They do not exceed 87% of hydraulic lifting capacity or 75% of tipping load. Weight of all lifting accessories must be deducted from the above lifting capacities. Lifting capacities are based on the machine standing on a firm, uniform supporting surface.

319D L/319D LN Hydraulic Excavators

Reach Boom Lift Capacities



Load at
Maximum Reach



Load Radius
Over Front



Load Radius
Over Side

R2.7 STICK – 2.7 m (8'10")
BUCKET – 0.77 m³ (1.0 yd³)

UNDERCARRIAGE – Long
SHOES – 790 mm (31") triple grouser

BOOM – Reach 5.3 m (17.4 ft)
COUNTERWEIGHT – 3.6 mt (7,940 lb)

Load Point Height	Load at Maximum Reach	3.0 m (10.0 ft)		4.5 m (15.0 ft)		6.0 m (20.0 ft)		7.5 m (25.0 ft)		m ft		
		Over Front	Over Side	Over Front	Over Side	Over Front	Over Side	Over Front	Over Side	Over Front	Over Side	
7.5 m 25.0 ft	kg lb									*1750 *3,700	*1750 *3,700	6.03 19.43
6.0 m 20.0 ft	kg lb					*3700 *8,000	*3700 *8,000			*2350 *5,000	*2300 *5,000	7.09 23.09
4.5 m 15.0 ft	kg lb					*4050 *8,800	3750 8,000	*3000	2450	*2350 *5,150	2300 5,100	7.71 25.20
3.0 m 10.0 ft	kg lb			6200 13,300	5700 12,250	*4800 *10,450	3550 7,600	*4250 *8,850	2350 5,050	*2450 *5,350	2050 4,450	8.10 26.54
1.5 m 5.0 ft	kg lb			8100 17,400	5250 11,250	*5700 *12,300	3350 7,150	4350 9,300	2250 4,850	*2600 *5,700	1900 4,150	8.24 27.04
Ground Line	kg lb			9050 19,500	5000 10,700	6150 13,150	3200 6,800	4250 9,100	2200 4,650	*2900 *6,400	1900 4,200	8.08 26.5
-1.5 m -5.0 ft	kg lb	*7300 *15,750	*7300 *15,750	*9050 *19,550	4950 10,550	6050 13,000	3100 6,650			*3500 *7,700	2100 4,650	7.59 24.87
-3.0 m -10.0 ft	kg lb	*10,550 *23,900	10,050 21,500	*8300 *17,900	5000 10,700	*6000 *12,900	3150 6,750			*4600 *10,200	2650 5,800	6.74 21.98
-4.5 m -15.0 ft	kg lb	*8650 *18,400	*8650 *18,400	*6250 *13,200	5200 11,150					*5000 *10,950	4050 9,200	5.27 16.99

* Indicates that the load is limited by hydraulic lifting capacity rather than tipping load. The above loads are in compliance with hydraulic excavator lift capacity standard ISO 10567:2007. They do not exceed 87% of hydraulic lifting capacity or 75% of tipping load. Weight of all lifting accessories must be deducted from the above lifting capacities. Lifting capacities are based on the machine standing on a firm, uniform supporting surface.

R3.2 STICK – 3.2 m (10'6")
BUCKET – 0.77 m³ (1.0 yd³)

UNDERCARRIAGE – Long
SHOES – 790 mm (31") triple grouser

BOOM – Reach 5.3 m (17.4 ft)
COUNTERWEIGHT – 3.6 mt (7,940 lb)

Load Point Height	Load at Maximum Reach	1.5 m (5.0 ft)		3.0 m (10.0 ft)		4.5 m (15.0 ft)		6.0 m (20.0 ft)		7.5 m (25.0 ft)		m ft		
		Over Front	Over Side	Over Front	Over Side	Over Front	Over Side	Over Front	Over Side	Over Front	Over Side	Over Front	Over Side	
7.5 m 25.0 ft	kg lb											*1750 *3,750	*1750 *3,750	6.84 22.11
6.0 m 20.0 ft	kg lb							*3150 *6,950	*3150 *6,950			*1850 *4,050	*1850 *4,050	7.78 25.37
4.5 m 15.0 ft	kg lb							*3600 *7,800	*3600 *7,800	*3250 *6,850	2500 5,250	*1900 *4,150	*1900 *4,150	8.32 27.24
3.0 m 10.0 ft	kg lb					*5450 *11,700	*5450 *11,700	*4400 *9,500	3600 7,700	*3900 *8,500	2400 5,100	*2000 *4,350	1750 3,900	8.63 28.30
1.5 m 5.0 ft	kg lb					*7500 *16,100	5350 11,450	*5350 *11,550	3350 7,200	4350 9,300	2250 4,850	*2100 *4,600	1650 3,650	8.76 28.73
Ground Line	kg lb					*8750 *18,900	5000 10,750	*6100 *13,150	3200 6,800	4250 9,100	2150 4,650	*2300 *5,100	1700 3,700	8.61 28.24
-1.5 m -5.0 ft	kg lb			*7100 *16,300	*7100 *16,300	*9100 *19,650	4900 10,500	6050 12,950	3100 6,600	4200 8,950	2100 4,500	*2700 *6,000	1850 4,050	8.16 26.73
-3.0 m -10.0 ft	kg lb	*7800 *16,950	*7800 *16,950	*11,600 *26,100	9900 21,150	*8600 *18,600	4900 10,550	6050 12,950	3100 6,600			*3450 *7,700	2200 4,900	7.36 24.05
-4.5 m -15.0 ft	kg lb			*10,100 *21,550	*10,100 *21,550	*7150 *15,200	5050 10,850					*4700 *10,300	3150 7,100	6.07 19.66

* Indicates that the load is limited by hydraulic lifting capacity rather than tipping load. The above loads are in compliance with hydraulic excavator lift capacity standard ISO 10567:2007. They do not exceed 87% of hydraulic lifting capacity or 75% of tipping load. Weight of all lifting accessories must be deducted from the above lifting capacities. Lifting capacities are based on the machine standing on a firm, uniform supporting surface.

319D L/319D LN Hydraulic Excavators

Reach Boom Lift Capacities



Load at Maximum Reach



Load Radius Over Front



Load Radius Over Side

R2.7 STICK – 2.7 m (8'10")
BUCKET – 0.77 m³ (1.0 yd³)

UNDERCARRIAGE – Long Narrow
SHOES – 600 mm (24") triple grouser

BOOM – Reach 5.3 m (17.4 ft)
COUNTERWEIGHT – 3.9 mt (8,600 lb)

Load Point Height	Unit	3.0 m (10.0 ft)		4.5 m (15.0 ft)		6.0 m (20.0 ft)		7.5 m (25.0 ft)		m		ft
		Over Front	Over Side	Over Front	Over Side	Over Front	Over Side	Over Front	Over Side	Over Front	Over Side	
7.5 m 25.0 ft	kg lb									*1750 *3,700	*1750 *3,700	6.03 19.43
6.0 m 20.0 ft	kg lb					*3700 *8,000	3500 7,450			*2300 *5,000	*2300 *5,000	7.09 23.09
4.5 m 15.0 ft	kg lb					*4050 *8,800	3400 7,250	*3000	2200	*2350 *5,150	2050 4,550	7.71 25.20
3.0 m 10.0 ft	kg lb			*6200 *13,300	5150 11,050	*4800 *10,450	3200 6,850	*4250 *8,850	2100 4,500	*2450 *5,350	1800 3,950	8.10 26.54
1.5 m 5.0 ft	kg lb			*8100 *17,400	4650 10,050	*5700 *12,300	3000 6,400	4350 9,250	2000 4,300	*2600 *5,700	1700 3,650	8.24 27.04
Ground Line	kg lb			*9050 *19,500	4450 9,500	6150 13,150	2850 6,050	4250 9,100	1950 4,150	*2900 *6,400	1700 3,700	8.08 26.50
-1.5 m -5.0 ft	kg lb	*7300 *15,750	*7300 *15,750	*9050 *19,550	4400 9,400	6050 12,950	3750 5,900			*3500 *7,700	1900 4,150	7.59 24.87
-3.0 m -10.0 ft	kg lb	*10,550 *23,900	8800 18,850	*8300 *17,900	4450 9,500	*6000 *12,900	2800 6,000			*4600 *10,200	2350 5,200	6.74 21.98
-4.5 m -15.0 ft	kg lb	*8650 *18,400	*8650 *18,400	*6250 *13,200	4650 9,950					*5000 *10,950	3600 8,200	5.27 16.99

* Indicates that the load is limited by hydraulic lifting capacity rather than tipping load. The above loads are in compliance with hydraulic excavator lift capacity standard ISO 10567:2007. They do not exceed 87% of hydraulic lifting capacity or 75% of tipping load. Weight of all lifting accessories must be deducted from the above lifting capacities. Lifting capacities are based on the machine standing on a firm, uniform supporting surface.

R3.2 STICK – 3.2 m (10'6")
BUCKET – 0.77 m³ (1.0 yd³)

UNDERCARRIAGE – Long Narrow
SHOES – 600 mm (24") triple grouser

BOOM – Reach 5.3 m (17.4 ft)
COUNTERWEIGHT – 3.9 mt (8,600 lb)

Load Point Height	Unit	1.5 m (5.0 ft)		3.0 m (10.0 ft)		4.5 m (15.0 ft)		6.0 m (20.0 ft)		7.5 m (25.0 ft)		m	ft	
		Over Front	Over Side	Over Front	Over Side	Over Front	Over Side	Over Front	Over Side	Over Front	Over Side			
7.5 m 25.0 ft	kg lb											*1750 *3,750	*1750 *3,750	6.84 22.11
6.0 m 20.0 ft	kg lb							*3150 *6,950	*3150 *6,950			*1850 *4,050	*1850 *4,050	7.78 25.37
4.5 m 15.0 ft	kg lb							*3600 *7,800	3450 7,350	*3250 *6,850	2250 4,700	*1900 *4,150	1750 3,850	8.32 27.24
3.0 m 10.0 ft	kg lb					*5450 *11,700	5250 11,350	*4400 *9,500	3250 6,950	*3900 *8,500	2150 4,550	*2000 *4,350	1550 3,450	8.63 28.30
1.5 m 5.0 ft	kg lb					*7500 *16,100	4750 10,250	*5350 *11,550	3000 6,450	4350 9,300	2000 4,300	*2100 *4,600	1450 3,200	8.76 28.73
Ground Line	kg lb					*8750 *18,900	4450 9,550	*6100 *13,150	2850 6,050	4250 9,050	1950 4,100	*2300 *5,100	1500 3,250	8.61 28.24
-1.5 m -5.0 ft	kg lb			*7100 *16,300	*7100 *16,300	*9100 *19,650	4350 9,300	6000 12,900	2750 5,850	4200 8,950	1900 4,000	*2700 *6,000	1600 3,550	8.16 26.73
-3.0 m -10.0 ft	kg lb	*7800 *16,950	*7800 *16,950	*11,600 *26,100	8650 18,500	*8600 *18,600	4350 9,350	6000 12,900	2750 5,850			*3450 *7,700	1950 4,350	7.36 24.05
-4.5 m -15.0 ft	kg lb			*10,100 *21,550	8900 19,100	*7150 *15,200	4500 9,650					*4700 *10,300	2800 6,300	6.07 19.66

* Indicates that the load is limited by hydraulic lifting capacity rather than tipping load. The above loads are in compliance with hydraulic excavator lift capacity standard ISO 10567:2007. They do not exceed 87% of hydraulic lifting capacity or 75% of tipping load. Weight of all lifting accessories must be deducted from the above lifting capacities. Lifting capacities are based on the machine standing on a firm, uniform supporting surface.

319D L/319D LN Hydraulic Excavators

Reach Boom Lift Capacities



Load Point Height



Load at Maximum Reach



Load Radius Over Front



Load Radius Over Side

R2.7 STICK – 2.7 m (8'10")
BUCKET – 0.77 m³ (1.0 yd³)

UNDERCARRIAGE – Long Narrow
SHOES – 600 mm (24") triple grouser

BOOM – Reach 5.3 m (17.4 ft)
COUNTERWEIGHT – 3.6 mt (7,940 lb)

Load Point Height	Unit	3.0 m (10.0 ft)		4.5 m (15.0 ft)		6.0 m (20.0 ft)		7.5 m (25.0 ft)		m ft		
		Over Front	Over Side	Over Front	Over Side	Over Front	Over Side	Over Front	Over Side	kg	lb	
7.5 m 25.0 ft	kg lb									*1750 *3,700	*1750 *3,700	6.03 19.43
6.0 m 20.0 ft	kg lb					*3700 *8,000	*3350 *7,150			*2300 *5,000	*2300 *5,000	7.09 23.09
4.5 m 15.0 ft	kg lb					*4050 *8,800	3250 6,900	*3000	2100	*2350 *5,150	1950 4,300	7.71 25.20
3.0 m 10.0 ft	kg lb			*6200 *13,300	4900 10,600	*4800 *10,450	3050 6,500	*4250 *8,850	2000 4,250	*2450 *5,350	1700 3,700	8.10 26.54
1.5 m 5.0 ft	kg lb			*8100 *17,400	4450 9,600	*5700 *12,300	2850 6,050	4150 8,950	1900 4,050	*2600 *5,700	1600 3,450	8.24 27.04
Ground Line	kg lb			*9050 *19,500	4200 9,050	5900 12,650	2700 5,750	4100 8,750	1850 3,900	*2900 *6,400	1600 3,500	8.08 26.50
-1.5 m -5.0 ft	kg lb	*7300 *15,750	*7300 *15,750	*9050 *19,550	4150 8,950	5850 12,500	2600 5,600			*3500 *7,700	1750 3,900	7.59 24.87
-3.0 m -10.0 ft	kg lb	*10,550 *23,900	8400 18,000	*8300 *17,900	4200 9,050	5850 12,600	2650 5,650			*4600 *10,200	2200 4,900	6.74 21.98
-4.5 m -15.0 ft	kg lb	*8650 *18,400	*8650 18,400	*6250 *13,200	4400 9,500					*5000 *10,950	3450 7,800	5.27 16.99

* Indicates that the load is limited by hydraulic lifting capacity rather than tipping load. The above loads are in compliance with hydraulic excavator lift capacity standard ISO 10567:2007. They do not exceed 87% of hydraulic lifting capacity or 75% of tipping load. Weight of all lifting accessories must be deducted from the above lifting capacities. Lifting capacities are based on the machine standing on a firm, uniform supporting surface.

R3.2 STICK – 3.2 m (10'6")
BUCKET – 0.77 m³ (1.0 yd³)

UNDERCARRIAGE – Long Narrow
SHOES – 600 mm (24") triple grouser

BOOM – Reach 5.3 m (17.4 ft)
COUNTERWEIGHT – 3.6 mt (7,940 lb)

Load Point Height	Unit	1.5 m (5.0 ft)		3.0 m (10.0 ft)		4.5 m (15.0 ft)		6.0 m (20.0 ft)		7.5 m (25.0 ft)		m ft		
		Over Front	Over Side	Over Front	Over Side	Over Front	Over Side	Over Front	Over Side	Over Front	Over Side	kg	lb	
7.5 m 25.0 ft	kg lb											*1750 *3,750	*1750 *3,750	6.84 22.11
6.0 m 20.0 ft	kg lb							*3150 *6,950	*3150 *6,950			*1850 *4,050	*1850 *4,050	7.78 25.37
4.5 m 15.0 ft	kg lb							*3600 *7,800	3300 7,050	*3250 *6,850	2100 4,450	*1900 *4,150	1650 3,650	8.32 27.24
3.0 m 10.0 ft	kg lb					*5450 *11,700	5050 10,850	*4400 *9,500	3100 6,600	*3900 *8,500	2000 4,300	*2000 *4,350	1450 3,200	8.63 28.30
1.5 m 5.0 ft	kg lb					*7500 *16,100	4550 9,800	*5350 *11,550	2850 6,150	4200 8,950	1900 4,050	*2100 *4,600	1350 3,000	8.76 28.73
Ground Line	kg lb					*8750 *18,900	4250 9,100	5900 12,700	2700 5,750	4050 8,700	1800 3,850	*2300 *5,100	1400 3,000	8.61 28.25
-1.5 m -5.0 ft	kg lb			*7100 *16,300	*7100 *16,300	*9100 *19,650	4150 8,850	5800 12,450	2600 5,550	4000 8,600	1750 3,750	*2700 *6,000	1500 3,300	8.16 26.73
-3.0 m -10.0 ft	kg lb	*7800 *16,950	*7800 *16,950	*11,600 *26,100	8250 17,700	*8600 *18,600	4150 8,900	5800 12,450	2600 5,550			*3450 *7,700	1850 4,100	7.36 24.05
-4.5 m -15.0 ft	kg lb			*10,100 *21,550	8550 18,300	*7150 *15,200	4300 9,200					*4700 *10,300	2650 6,000	6.07 19.66

* Indicates that the load is limited by hydraulic lifting capacity rather than tipping load. The above loads are in compliance with hydraulic excavator lift capacity standard ISO 10567:2007. They do not exceed 87% of hydraulic lifting capacity or 75% of tipping load. Weight of all lifting accessories must be deducted from the above lifting capacities. Lifting capacities are based on the machine standing on a firm, uniform supporting surface.