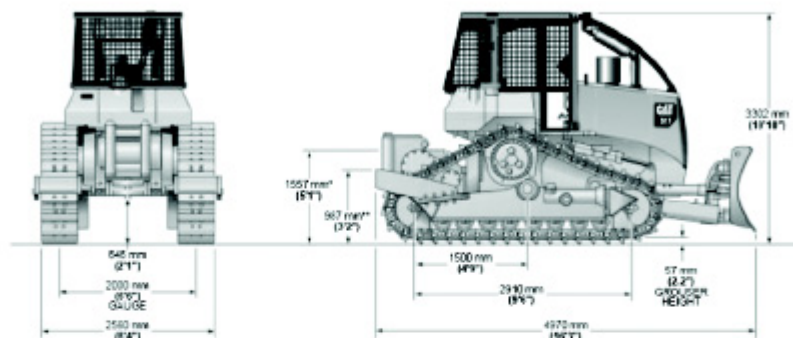


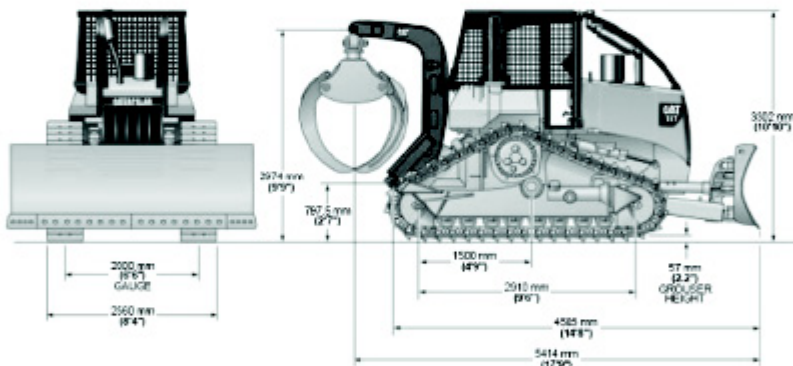
**MACHINE DIMENSIONS** (All dimensions are approximate.)

**Cable:**

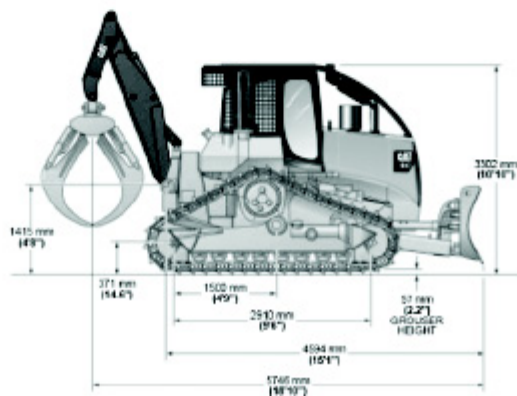


\*Top of drum.  
\*\*Top of guard.

**Fixed Grapple:**

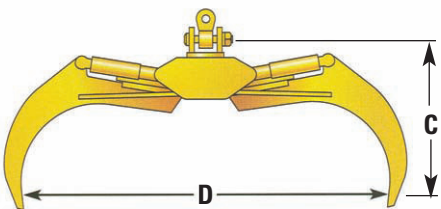
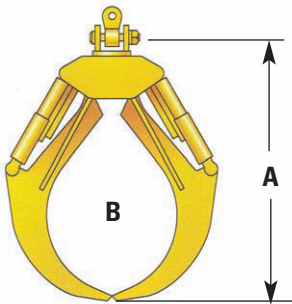


**Swing Boom:**



# Grapples

Choose from a variety of grapple configuration to meet your needs.



### Sorting Grapple

- Used for 305 mm (12 in) or larger diameter trees
- Designed to pick-up individual or several stems for quick eyeles

### Bunching Grapple

- Used for 305 mm (12 in) or smaller diameter trees
- Designed to gather bundle of stems and maximize grapple loads

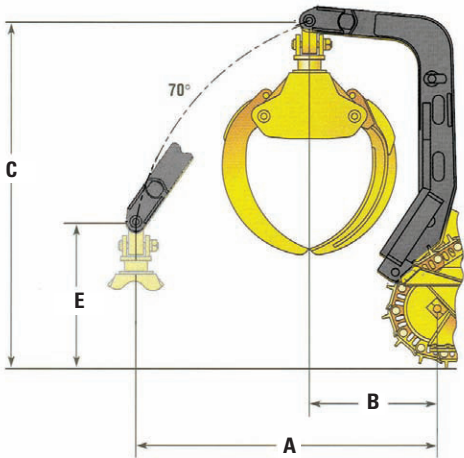
### Grapple for 517

	A	B	C	D
2.13 m / 84 in (Sorting)	1980 mm / 78 in	0.74 m2 / 8 ft2	1680 mm / 66 in	2130 mm / 84 in
2.29 m / 90 in (Bunching)	1920 mm / 75 in	0.74 m2 / 8 ft2	1640 mm / 64 in	2290 mm / 90 in

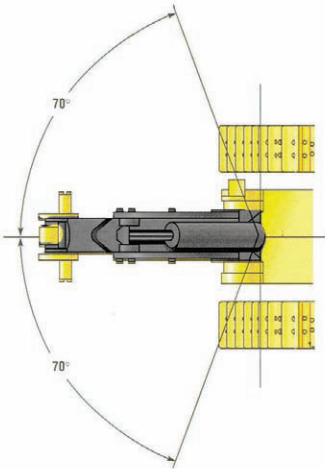
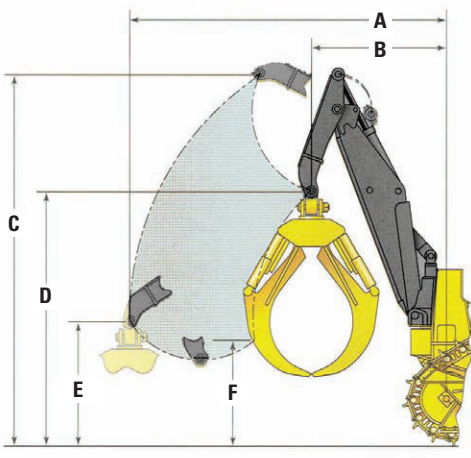
# Arch Configurations

Two arch configurations allow you to effectively match the 517 to a wide variety of skidding applications.

### Single-function arch



### Swing boom



	517	A	B	C	D	E	F
Single Function		2465 mm / 96 in	909 mm / 36 in	2974 mm / 117 in	x	1000 mm / 39 in	x
Swing Boom Arch		3601 mm / 142 in	1500 mm / 59 in	4115 mm / 162 in	2748 mm / 108.1 in	1491 mm / 59 in	1249 mm / 49.2 inISO