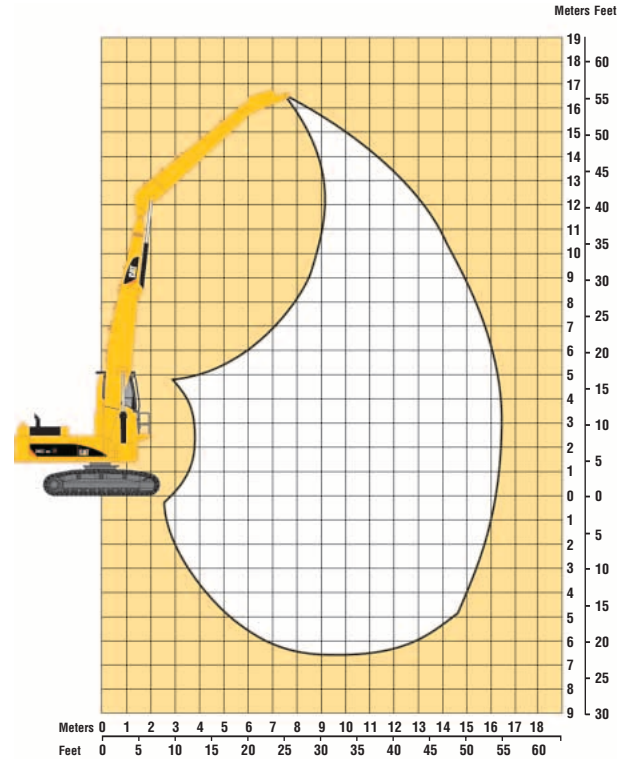


# 345C MH Material Handler

## Working Ranges

Machine equipped with 16.5 m (54'2") front linkage.

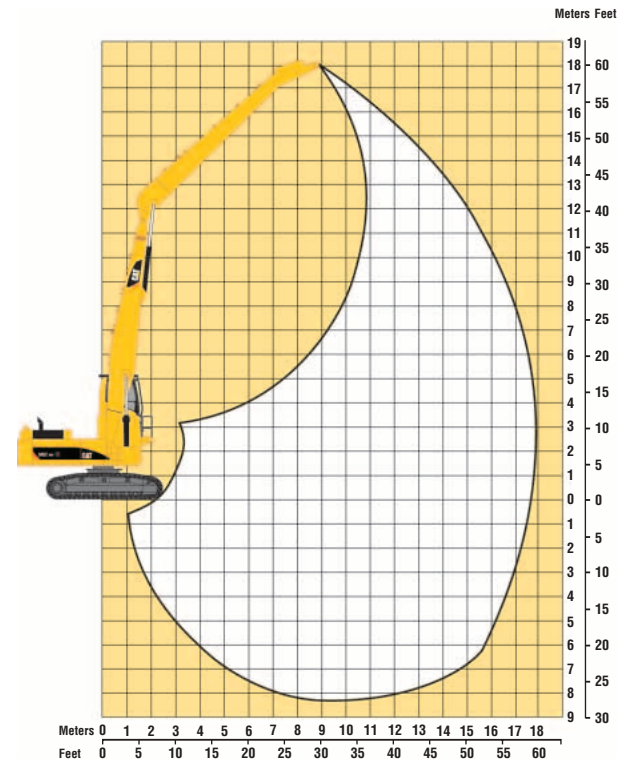
Maximum reach	16.5 m	54'2"
Maximum height	16.9 m	55'6"



## Working Ranges

Machine equipped with 18.0 m (59'1") front linkage.

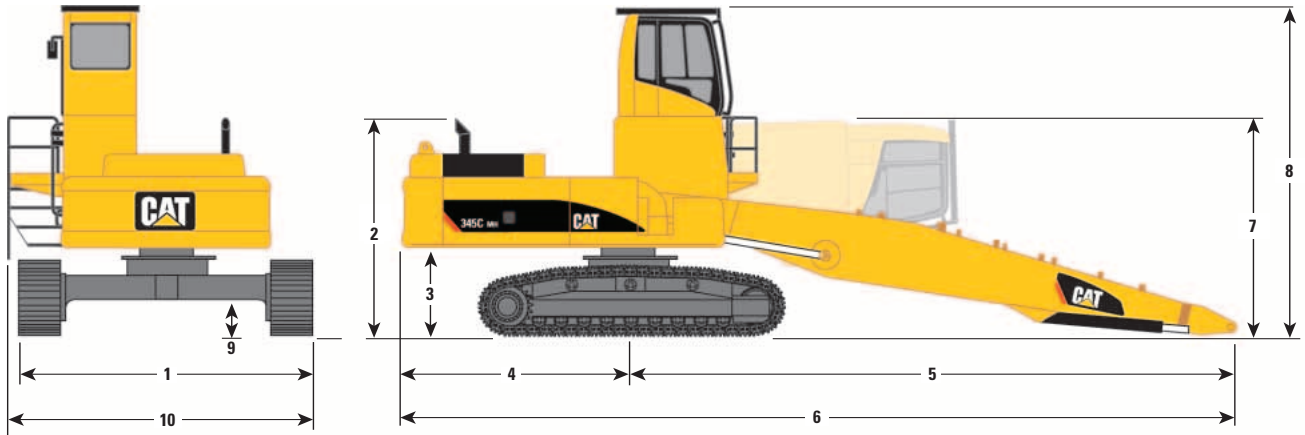
Maximum reach	18.0 m	59'1"
Maximum height	18.0 m	59'1"



# 345C MH Material Handler

## Dimensions

All dimensions are approximate.



<b>1</b> Shipping Width	3970 mm (13'0")
<b>2</b> Height to Top of Exhaust	3604 mm (11'10")
<b>3</b> Counterweight Clearance	1474 mm (4'10")
<b>4</b> Tail Swing Radius	3763 mm (12'4")
<b>5</b> Swing Center to End of Boom	10 098 mm (33'2")
<b>6</b> Rear of Carrier to End of Boom	13 861 mm (45'6")
<b>7</b> Shipping Height – cab tipped	3618 mm (11'10")
<b>8</b> Operating Height – to top of cab with FOGS	5471 mm (18'0")
<b>9</b> Ground Clearance	743 mm (2'5")
<b>10</b> Operating Width	4470 mm (14'8")

# 345C MH Material Handler

## Lift Capacities

345C MH with 750 mm Track

**BOOM – 9.9 m (32'6")**  
**STICK – 9.1 m (29'10")**

**MAX REACH – 18 m (59'1")**  
**MAX HEIGHT – 18 m (59'1")**

Lift Point Height		4.5 m/15.0 ft		6.0 m/20.0 ft		7.5 m/25.0 ft		9.0 m/30.0 ft		10.5 m/35.0 ft		12.0 m/40.0 ft		13.5 m/45.0 ft		15.0 m/50.0 ft		16.5 m/55.0 ft		18.0 m/60.0 ft		Maximum Reach				
		Over Front	Over Side	Over Front	Over Side	Over Front	Over Side	Over Front	Over Side	Over Front	Over Side	Over Front	Over Side	Over Front	Over Side	Over Front	Over Side	Over Front	Over Side	Over Front	Over Side	Over Front	Over Side	m	ft	
16.5 m	kg									*6600	*6600												*5800	*5800	11.1	
55.0 ft	lb									*14,400	*14,400												*12,700	*12,700	35.2	
15.0 m	kg									*8000	*8000	*6500	*6500										*5300	*5300	12.8	
50.0 ft	lb									*17,500	*17,500	*14,200	*14,200										*11,700	*11,700	41.2	
13.5 m	kg											*7700	*7700	*6100	*6100								*5000	*5000	14.1	
45.0 ft	lb											*17,000	*17,000	*13,300	*13,300								*11,100	*11,100	45.8	
12.0 m	kg											*8100	*8100	*7300	*7300	*5300	*5300						*4900	*4900	15.2	
40.0 ft	lb											*17,800	*17,800	*16,100	*16,100	*11,600	*11,600						*10,700	*10,700	49.5	
10.5 m	kg											*8100	*8100	*7600	*7600	*6600	*6600						*4800	*4800	16.1	
35.0 ft	lb											*17,900	*17,900	*16,600	*16,600	*14,500	*14,500						*10,500	*10,500	52.5	
9.0 m	kg									*9000	*9000	*8200	*8200	*7600	*7600	*7000	*7000	*5300	*5300				*4700	*4700	16.8	
30.0 ft	lb									*19,700	*19,700	*18,100	*18,100	*16,700	*16,700	*15,500	*15,500	*11,600	*11,600				*10,400	*10,400	54.8	
7.5 m	kg									*9200	*9200	*8400	*8400	*7700	*7700	*7100	*7100	6500	6500	5400	5400		*4700	*4700	17.3	
25.0 ft	lb									*20,300	*20,300	*18,500	*18,500	*17,000	*17,000	*15,600	*15,600	14,200	14,200	13,500	13,500		*10,400	*10,400	56.6	
6.0 m	kg									*10 700	*9600	*9600	*8600	*8600	*7800	7600	6400	6200	5400				*4800	4700	17.7	
20.0 ft	lb									*23,600	*21,100	*21,100	*19,000	*19,000	*17,200	16,700	*15,700	14,000	13,300	11,800			*10,500	10,400	57.9	
4.5 m	kg					*13 200	*13 200	*11 400	*11 400	*10 000	*10 000	*8900	*8900	*8000	7400	7200	6200	6100	5300				*4900	4500	17.9	
15.0 ft	lb					*29,100	*29,100	*25,000	*25,000	*22,100	*21,900	*19,500	*19,500	*17,500	16,200	15,800	13,700	13,100	11,700				*10,700	10,000	58.7	
3.0 m	kg	*23 400	*23 400	*17 600	*17 600	*14 200	*14 200	*12 000	*12 000	*10 300	*10 300	*9100	8600	*8100	7200	7000	6000	6000	5200	*5100	4400	*5000	4400	18		
10.0 ft	lb	*51,500	*51,500	*38,800	*38,800	*31,300	*31,300	*26,300	*26,300	*22,700	*22,700	*20,000	18,900	*17,800	15,700	15,400	13,300	12,900	11,400	*11,200	9800	*11,000	9800	59.2		
1.5 m	kg	*23 600	*23 600	*19 100	*19 100	*15 100	*15 100	*12 400	*12 400	10 100	10 100	*9200	8300	8000	6900	6800	5900	5900	5100	5100	4400	5100	4400	18		
5.0 ft	lb	*51,800	*51,800	*42,000	*42,000	*33,100	*33,100	*27,400	*27,400	*23,300	*23,300	*20,300	18,200	17,700	15,200	15,000	12,900	12,700	11,100	11,300	9600	11,300	9600	59.1		
0.0 m	kg	*8900	*8900	*19 700	*19 700	*15 500	*15 500	*12 700	12 000	*10 700	9600	*9200	8000	7800	6700	6700	5700	5800	5000				5100	4400	17.9	
0.0 ft	lb	*19,500	*19,500	*43,400	*43,400	*34,100	*34,100	*27,900	26,400	*23,600	21,200	*20,300	17,500	16,800	14,700	14,700	12,600	12,400	10,900				11,300	9600	58.7	
-1.5 m	kg	*7100	*7100	*14 200	*14 200	*15 400	14 800	*12 600	11 500	*10 600	9300	9000	7700	7600	6500	6600	5600	5700	4900				*4900	4400	17.6	
-5.0 ft	lb	*15,600	*15,600	*31,200	*31,200	*33,900	32,500	*28,700	25,300	*23,400	20,400	19,800	16,900	16,800	14,300	14,400	12,300	12,300	10,700				*10,700	9700	57.8	
-3.0 m	kg	*7000	*7000	*11 700	*11 700	*14 800	14 300	*12 200	11 100	*10 300	9000	*8800	7500	7 500	6400	*6400	5500	*5200	4800				*4600	4500	17.2	
-10.0 ft	lb	*15,400	*15,400	*25,700	*25,700	*32,500	31,400	*26,800	24,400	*22,600	19,800	*19,300	16,500	16,400	14,000	*14,000	12,100	*11,500	10,600				*10,100	10,000	56.4	
-4.5 m	kg	*7300	*7300	*11 000	*11 000	*13 600	*13 600	*11 400	10 900	*9600	8800	*8100	7400	*6900	6300	*5700	5500	*4400	*4400				*4200	*4200	16.7	
-15.0 ft	lb	*16,100	*16,100	*24,300	*24,300	*30,000	*30,000	*25,000	23,900	*21,100	19,400	*17,900	16,200	*15,100	13,800	*12,500	12,000	*9600	*9600				*9200	*9200	54.6	
-6.0 m	kg	*7800	*7800	*11 100	*11 100	*11 900	*11 900	*10 100	*10 100	*8500	*8500	*7200	*7200	*5900	*5900	*4700	*4700						*3700	*3700	16	
-20.0 ft	lb	*17,200	*17,200	*24,400	*24,400	*26,300	*26,300	*22,200	*22,200	*18,700	*18,700	*15,600	*15,600	*13,000	*13,000	*10,200	*10,200						*8100	*8100	52.2	
-7.5 m	kg			*11 200	*11 200	*9700	*9700	*8300	*8300	*7000	*7000	*5800	*5800	*4600	*4600											
-25.0 ft	lb			*24,600	*24,600	*21,300	*21,300	*18,200	*18,200	*15,400	*15,400	*12,700	*12,700	*10,000	*10,000											

\* Indicates that the load is limited by hydraulic capacity rather than tipping capacity. Rated loads do not exceed 87% of hydraulic lifting capacity or 75% of tipping capacity.

# 345C MH Material Handler

## Lift Capacities

345C MH with 750 mm Track

**BOOM** – 9.9 m (32'6")  
**STICK** – 7.4 m (24'3")

**MAX REACH** – 16.5 m (54'2")  
**MAX HEIGHT** – 16.9 m (55'6")

Lift Point Height		4.5 m/15.0 ft		6.0 m/20.0 ft		7.5 m/25.0 ft		9.0 m/30.0 ft		10.5 m/35.0 ft		12.0 m/40.0 ft		13.5 m/45.0 ft		15.0 m/50.0 ft		Maximum Reach				
		Over Front	Over Side	Over Front	Over Side	Over Front	Over Side	Over Front	Over Side	Over Front	Over Side	Over Front	Over Side	Over Front	Over Side	Over Front	Over Side	Over Front	Over Side	m	ft	
16.5 m 55.0 ft	kg lb																			*7900	*7900	8.3
15.0 m 50.0 ft	kg lb							*9400	*9400											*17,500	*17,500	25.6
13.5 m 45.0 ft	kg lb									*9300	*9300	*6800	*6800							*6600	*6600	12.1
12.0 m 40.0 ft	kg lb									*20,400	*20,400	*14,900	*14,900							*15,500	*15,500	33.4
10.5 m 35.0 ft	kg lb									*9600	*9600	*8900	*8900							*6300	*6300	13.3
9.0 m 30.0 ft	kg lb									*21,200	*21,200	*19,500	*19,500							*13,900	*13,900	43.3
7.5 m 25.0 ft	kg lb									*9700	*9700	*8900	*8900	*8000	7600					*6200	*6200	14.3
6.0 m 20.0 ft	kg lb									*21,300	*21,300	*19,500	*19,500	*17,700	16,800					*13,500	*13,500	46.6
4.5 m 15.0 ft	kg lb									*10,900	*10,900	*9800	*9800	*8900	*8900	*8100	7600	*6300	*6300	*6100	*6100	15.1
3.0 m 10.0 ft	kg lb									*24,000	*24,000	*21,600	*21,600	*19,600	*19,600	*17,900	16,700	*13,900	*13,900	*13,400	*13,400	49.2
1.5 m 5.0 ft	kg lb									*11,300	*11,300	*10,100	*10,100	*9100	*9100	*8200	7500	7200	6300	*6100	5800	15.7
0.0 m 0.0 ft	kg lb									*24,900	*24,900	*22,100	*22,100	*19,900	*19,900	*18,000	16,500	15,900	13,800	*13,400	12,800	51.2
16.5 m 55.0 ft	kg lb					*13,800	*13,800	*11,800	*11,800	*10,400	*10,400	*9,200	8900	*8300	7400	7100	6200	*6200	5500	*6200	5500	16.1
15.0 m 50.0 ft	kg lb	*24,100	*24,100	*18,200	*18,200	*14,700	*14,700	*12,300	*12,300	*10,700	10,600	*9,400	8600	8300	7200	7000	6100	6100	5300	5300	16.3	
13.5 m 45.0 ft	kg lb	*53,100	*53,100	*39,900	*39,900	*32,200	*32,200	*27,100	*27,100	*23,400	23,200	*20,600	19,000	18,200	15,800	15,500	13,400	13,500	11,600	11,600	53.6	
12.0 m 40.0 ft	kg lb	*16,800	*16,800	*19,500	*19,500	*15,400	*15,400	*12,800	12,700	*10,900	10,200	*9,500	8300	8100	7000	6900	6000	6000	5100	5100	16.5	
10.5 m 35.0 ft	kg lb	*37,000	*37,000	*42,900	*42,900	*33,900	*33,900	*28,100	27,900	*24,000	22,300	*20,800	18,400	17,800	15,400	15,200	13,100	13,200	11,300	11,300	54	
9.0 m 30.0 ft	kg lb	*6700	*6700	*20,100	*20,100	*15,800	15,700	*13,000	12,100	*11,000	9800	9400	8100	7900	6800	6800	5800	5900	5100	5100	16.5	
7.5 m 25.0 ft	kg lb	*14,500	*14,500	*44,300	*44,300	*34,800	34,500	*28,600	26,700	*24,200	21,500	20,600	17,800	17,400	15,000	14,900	12,800	13,000	11,200	11,200	54	
6.0 m 20.0 ft	kg lb	*5700	*5700	*12,600	*12,600	*15,700	15,000	*12,900	11,700	*10,900	9500	9200	7900	7800	6700	6700	5700	5700	5100	5100	16.3	
4.5 m 15.0 ft	kg lb	*12,600	*12,600	*27,700	*27,700	*34,500	33,000	*28,400	25,700	*23,900	20,800	20,100	17,300	17,100	14,700	14,700	12,600	*12,600	11,200	11,200	53.5	
3.0 m 10.0 ft	kg lb	*6100	*6100	*10,800	*10,800	*15,000	14,600	*12,400	11,300	*10,500	9200	*8900	7800	*7600	6500	*6300	5700	*5400	5200	5200	16	
1.5 m 5.0 ft	kg lb	*13,500	*13,500	*23,800	*23,800	*33,000	32,000	*27,300	24,900	*23,000	20,300	*19,600	16,900	*16,700	14,400	*14,000	12,500	*11,800	11,400	11,400	52.5	
0.0 m 0.0 ft	kg lb	*6900	*6900	*10,600	*10,600	*13,800	*13,800	*11,500	11,100	*9800	9100	*8300	7600	*6900	6500	*5600	*5600	*4900	*4900	4900	15.6	
16.5 m 55.0 ft	kg lb	*15,200	*15,200	*23,400	*23,400	*30,300	*30,300	*25,400	24,500	*21,500	19,900	*18,200	16,700	*15,200	14,200	*12,200	*12,200	*10,900	*10,900	10,900	51.1	
15.0 m 50.0 ft	kg lb			*11,100	*11,100	*12,000	*12,000	*10,200	*10,200	*8600	*8600	*7300	*7300	*5900	*5900	*13,000	*13,000	*4400	*4400	4400	15	
13.5 m 45.0 ft	kg lb			*24,400	*24,400	*26,300	*26,300	*22,400	*22,400	*19,000	*19,000	*16,000	*16,000	*13,000	*13,000			*9600	*9600	9600	49	
12.0 m 40.0 ft	kg lb					*9600	*9600	*8300	*8300	*7100	*7100	*5800	*5800									
10.5 m 35.0 ft	kg lb					*21,100	*21,100	*18,400	*18,400	*15,600	*15,600	*12,800	*12,800									

\* Indicates that the load is limited by hydraulic capacity rather than tipping capacity. Rated loads do not exceed 87% of hydraulic lifting capacity or 75% of tipping capacity.